

TO:	Dr. Cone, Superintendent of Schools, LVISD	FROM:	Catherine Blackler <i>Catherine Blackler</i> Senior Project Manager, AGCM
cc:	Belinda Raindl, LVISD		Michael Rogers, AGCM
RE:	La Vernia ISD – Bond 2023	DATE:	June 18, 2025
SUBJECT:	n/a	PR DATE:	n/a
PR COST:	\$ 256,122.00	CONTRACTOR:	Allegion / Architectural Division 8

Dear Dr. Cone,

A comprehensive study was conducted across the entire campus to evaluate the condition of the door hardware and cores. This effort also included the development of detailed floor plans with corresponding door numbers. The purpose of this proposed request is to improve campus security by replacing all existing cores and rekeying the entire facility to a dedicated, secure key system. Three options were evaluated as part of this study.

- ❖ **Option 1:** Proposes rekeying the entire campus (the Primary, Intermediate, Junior High, and High School buildings) and replacing the hardware and cores at the Support Center and Central Office. These two facilities currently have more residential-style locks, which would be upgraded to commercial-grade hardware.

The estimated cost for this option is **\$176,498.00 (furnish and install)**.

A value engineering (VE) option was presented for a credit of <\$5,616.00>. This option deletes the cost of 72 cores located in exterior panic devices. The existing covers need to be reversed to deactivate the locking function, a task to be performed by LVISD staff.

- ❖ **Option 2:** This proposal changes the classroom hardware function from an inclusion function to a storeroom function to enhance security. This change applies only to classroom doors; all other doors will retain their current hardware. Provisions are included to repair any affected hardware as needed. This change impacts hardware already purchased under the 2023 bond program currently underway, specifically for the Primary and Intermediate campuses.

The purpose of this proposed change is to enhance campus security by ensuring that classroom doors always remain locked, while access into the rooms would be controlled. Safe egress would still be maintained in accordance with life safety requirements.

To minimize waste and reallocate resources efficiently, the idea is to **repurpose the inclusion-function hardware** (originally purchased for the Primary and Intermediate schools) for use at the **Support Center and Central Office**, where it would still be appropriate. Then, **new storeroom-function hardware** would be purchased for new addition at the Primary and Intermediate campuses, ensuring consistency in hardware function across all instructional spaces. This cost is included in the estimated below.

The estimated cost for this option is **\$256,122.00 (furnish and install)**.

A Value Engineering (VE) option was also presented for a credit of <\$9,150.00>. Like the VE option in Option 1, this credit is based on removing 72 lock cores from exterior panic devices. The locking function would be disabled by reversing the existing covers, a task that LVISD staff can perform. In addition, this VE option assumes that LVISD staff will install the hardware and cores at the Support Center and Central Office.



Professional Project Management Firm

- ❖ **Option 3:** Considered the “Cadillac option.” It includes rekeying and upgrading the entire campus; however, instead of using standard storeroom-function hardware, this option proposes installing **wireless locks with card access** throughout. This would provide a higher level of security and greater flexibility for access control, aligning with more modern, technology-based security systems.

The estimated cost for this option is **\$454,081.00 (furnish and install)**.

A Value Engineering (VE) option was also presented for a credit of <\$9,150>. Like the VE option in Option 2, this credit is based on removing 72 lock cores from exterior panic devices. The locking function would be disabled by reversing the existing covers, a task that LVISD staff can perform. In addition, this VE option assumes that LVISD staff will install the hardware and cores at the Support Center and Central Office.

We are requesting approval to proceed with **Option 2 in the amount of \$ 256,122.00**. If approved, we anticipate complete campus conversion completion targeted by the end of the year 2025.

On a side note, if the new hardware for the new Primary and Intermediate school additions is delayed, we will install the currently available hardware on those doors. Once the new hardware arrives, we will swap it out at no additional cost to the district.

1. TRADE PARTNERS PRICING:

i. Architectural Division 8	Cores/Hardware	256,122.00
-----------------------------	----------------	------------

2. FUNDING SOURCE:

a. SOFT COST – LVISD: Safety & Security Allowance	<256,122.00>
---	--------------

3. PROJECTED CONTINGENCY (After PR Approval):

a. SOFT COST – LVISD: Safety & Security Allowance	3,743,878.00
---	--------------

Based on this analysis, AGCM has no objections to the cost, or the supporting documentation as submitted. If you have any questions or require further information, please let me know.

Sincerely,
AGCM, Inc.

Catherine Blackler
Senior Project Manager

Attachment: Core Proposals and Spreadsheet

/cb



					BOND BUDGET:	CAMPUS WIDE SAFETY & SECURITY				Bid Date:	n/a
					TOTAL COST FOR THIS WORK:	See options below				Bid Time:	n/a
					BV Contractor Bid:	n/a				Bldg Area (SF):	Campus Wide
					LVISD Provided:	n/a				ADDENDA:	n/a
					WRP Budget (Estimated taxes) :	n/a				DRAWINGS/SPECS:	n/a
										BUYBOARD REQUIRED:	Yes
					Savings:	n/a					
					GRAND TOTAL	LVISD OWNER CONTINGENCY			BARTLETT BOND 2023 OWNER CONTINGENY		
					PER OPTION	MATERIALS	LABOR	TOTAL	MATERIALS	LABOR	TOTAL
Option 1.0	Campus rekeying / core change (PRI, INT, JS, HS) only				\$ 176,498.00	\$ 97,651.40	\$ 60,030.00	\$ 157,681.40	\$ -	\$ -	\$ -
Option 1.1	Support Center and Central Office only							\$ 18,816.60			
Option 1a	VE Option 3: Deduct 72 core from panic devices (District to flip the device - don't need a new core)				\$ 170,882.00	\$ (5,105.45)	\$ (510.55)	\$ (5,616.00)			
Option 2	Campus rekey & Change from CLASSROOM FUNCTION to STOREROOM FUNCTION on CLASSROOMS only (includes Support Center & Central Office)				\$ 256,122.00	\$ 109,201.00	\$ 119,955.00	\$ 229,156.00	\$ -	\$ -	\$ -
Option 2a	STOREROOM FUNCTION (BOND 2023 PROGRAME - CHANGE PAID THRU the BARTLETT COCKE OWNER CONTINGENCY (included swopping at Primary and Intermediate with ne locks)					\$ -	\$ -	\$ -	\$ 26,966.00	\$ -	\$ 26,966.00
Option 2b	VE Option 2: Deduct if LVISD chooses to install 50 locks at Central Office and Support Buiding				\$ 246,972.00	\$ -	\$ -	\$ -	\$ (8,318.18)	\$ (831.82)	\$ (9,150.00)
Option 3	Campus rekey & WIRELESS LOCKS on CLASSROOMS only				\$ 454,081.00	\$ 290,461.00	\$ 98,955.00	\$ 389,416.00			
Option 3a	NDEB LOCKS (BOND 2023 PROGRAM) - CHANGE PAID THRU THE BARTLETT COCKE OWNER CONTINGENCY					\$ -	\$ -	\$ -	\$ 64,665.00	\$ -	\$ 64,665.00
Option 3a	VE Option 3: Deduct if LVISD chooses to install 50 locks at Central Office and Support Buiding				\$ 444,931.00	\$ -	\$ -	\$ -	\$ (8,318.18)	\$ (831.82)	\$ (9,150.00)
CAMPUS WIDE REKEY - HARDWARE REPLACEMENT ASSESSMENT						MATERIALS			LABOR - STILL TO BE DETERMINED		
NOTES	DESCRIPTION					MATERIAL COSTS	OH&P (10%)	TOTAL	LABOR	OH&P (10%)	TOTAL
OPTION 1 - REKEYING / CORE CHANGE OUT ONLY					-	\$ 105,880.00	\$ 10,588.00	\$ 116,468.00	\$ 54,572.73	\$ 5,457.27	\$ 60,030.00
a.	Quote 06/11/25 Valid for 90 days			09/09/25	-	\$ 88,774.00	\$ 8,877.40	\$ 97,651.40	\$ 54,572.73	\$ 5,457.27	\$ 60,030.00
b.	Schlage Restricted Permanent Cores			1,314	ea	-	-	-	-	-	-
	- Deduct 140 cores for lock conversion					-	-	-	-	-	-
	- Deduct 72 for cylinder dogging removal (this may change based on feed back from Mr. Hill)					-	-	-	-	-	-
c.	Cut keys per core			1	ea	-	-	-	-	-	-
d.	Blank key per core			1	ea	-	-	-	-	-	-
e.	Control keys			10	ea	-	-	-	-	-	-
f.	Master keys			40	ea	-	-	-	-	-	-
g.	SFIC cylinder housing			3	ea	-	-	-	-	-	-
h.	Blank cylinders (dummy cylinders)			17	ea	-	-	-	-	-	-
i.	Central office and Support Services					\$ 17,106.00	\$ 1,710.60	\$ 18,816.60	Included	Included	Included
OPTION 2 - REKEY & MECHANICAL CHANGE from CLASSROOM FUNCTION to STOREROOM FUNCTION on CLASSROOMS only					-	\$ 99,274.00	\$ 9,927.00	\$ 109,201.00	\$ 109,050.00	\$ 10,905.00	\$ 119,955.00
a.	Proposal Pricing Valid			09/10/25	-	-	-	-	-	-	-



NOTES	DESCRIPTION			MATERIAL COSTS	OH&P (10%)	TOTAL	LABOR	OH&P (10%)	TOTAL
b.	Schlage Restricted Permanent Cores (1,102 total)	1,314	ea	-	-	-	-	-	-
	- Deduct 140 cores for lock conversion	(140)	ea	-	-	-	-	-	-
	- Deduct 72 for cylinder dogging removal <i>(this may change based on feed back from Mr. Hill)</i>	(72)	ea	-	-	-	-	-	-
c.	Cut keys per core	1	ea	-	-	-	-	-	-
d.	Blank key per core	1	ea	-	-	-	-	-	-
e.	Control keys	10	ea	-	-	-	-	-	-
f.	Master keys	40	ea	-	-	-	-	-	-
g.	SFIC cylinder housing <i>(what is this 3?)</i>	3	ea	-	-	-	-	-	-
h.	Blank cylinders (dummy cylinders)	17	ea	-	-	-	-	-	-
i.	New Schlage ND Storeroom Fuction Locks for Classrooms	42	ea	-	-	-	-	-	-
j.	Schalge ND Conversion kits to turn Classroom function into Storeroom function on existing locks	140	ea	-	-	-	-	-	-
k.	Schalge Key Cam to convert 26 existing locks to Storeroom function on Classroom doors	26	ea	-	-	-	-	-	-
l.	Falcon T Series lock chasis to convert existing locks to Storeroom function on Classrooms	7	ea	-	-	-	-	-	-
m.	Spacer rings and 2-3/8" latches to use repurposed entry locks at Central Office and Support Buildings	50	ea	-	-	-	-	-	-
OPTION 2a - STOREROOM FUNCTION LOCKS (BOND 2023 PROGRAM) - CHANGE PAID THRU THE BARTLETT COCKE OWNER CONTINGENCY			-	24,515.00	\$ 2,451.00	\$ 26,966.00	\$ -	\$ -	\$ -
a.	Proposal Pricing Valid	09/10/25	-	-	-	-	-	-	-
b.	Storeroom function locks for classroom doors	72	ea	-	-	-	-	-	-
c.	Locks at Primary & Intermediate swapped out with specifed entry function locks	32	ea	-	-	-	-	-	-
	- Entry function locks to be reboxed and handed over to LVISD to be repurposed			-	-	-	-	-	-
	- Re-installation included			-	-	-	-	-	-
d.	Locks at High School and Jr High to be installed during intital installation	40	ea	-	-	-	-	-	-
	- Entry function locks will not be installed and will be turned over to LVISD	17	ea	-	-	-	-	-	-
OPTION 3 - REKEY & WIRELESS LOCKS on CLASSROOMS only			-	\$ 264,055.00	\$ 26,406.00	\$ 290,461.00	\$ 89,959.09	\$ 8,995.91	\$ 98,955.00
a.	Proposal Pricing Valid	09/10/25	-	-	-	-	-	-	-
	- Deduct 140 cores for lock conversion	Chris - confirm if this needs to be adjusted to accomm		-	-	-	-	-	-
	- Deduct 72 for cylinder dogging removal	Chris - confirm if this needs to be adjusted to accomm		-	-	-	-	-	-
b.	Cut keys per core	1	ea	-	-	-	-	-	-
c.	Blank key per core	1	ea	-	-	-	-	-	-
d.	Control keys	10	ea	-	-	-	-	-	-
e.	Master keys	40	ea	-	-	-	-	-	-
f.	SFIC cylinder housing <i>(what is this 3?)</i>	3	ea	-	-	-	-	-	-
g.	Blank cylinders (dummy cylinders)	17	ea	-	-	-	-	-	-



NOTES	DESCRIPTION			MATERIAL COSTS	OH&P (10%)	TOTAL	LABOR	OH&P (10%)	TOTAL
h.	Schlage NDEB Wireless access control locks for classrooms	238	ea	-	-	-	-	-	-
i.	Spacer rings and 2-3/8" latches to use repurposed entry locks	50	ea	-	-	-	-	-	-
OPTION 3a - NDEB LOCKS (BOND 2023 PROGRAM) - CHANGE PAID THRU THE BARTLETT COCKE OWNER CONTINGENCY			-	58,787.00	\$ 5,878.00	\$ 64,665.00	\$ -	\$ -	\$ -
a.	Proposal Pricing Valid	09/10/25	-	-	-	-	-	-	-
b.	NDEB-B-RHO 13-247 626 wireless access control locks for classroom doors	72	ea	-	-	-	-	-	-
c.	Locks at Primary & Intermediate swapped out with specifed entry function locks	32	ea	-	-	-	-	-	-
	- Entry function locks to be reboxed and handed over to LVISD to be repurposed			-	-	-	-	-	-
	- Re-installation included			-	-	-	-	-	-
d.	Locks at High School and Jr High to be installed during intital installation	40	ea	-	-	-	-	-	-
	- Entry function locks will not be installed and will be turned over to LVISD	17	ea	-	-	-	-	-	-
ONE TIME COST - Wireless Lock Replacement Parts Price List			-	-	\$ -	\$ -	\$ -	\$ -	\$ -
a.	Proposal Pricing Valid	06/30/25	-	-	-	-	-	-	-
b.	Entire NDEB-B-RHO unit (highly unlikely - may only need to replace components. Price per component below)	cost to replace per unit	\$ 850.00	-	-	-	-	-	-
b.	Battery Holder Kit (4/ea AA Batteries not included) N223-044	cost to replace per unit	\$ 32.00	-	-	-	-	-	-
c.	Motorized Chasis Assembly N223-007	cost to replace per unit	\$ 374.00	-	-	-	-	-	-
d.	Outside Escutcheon Assembly N223-007	cost to replace per unit	\$ 129.00	-	-	-	-	-	-
e.	Inside Escutcheon Assembly (includes battery holder kit) 47278740	cost to replace per unit	\$ 572.00	-	-	-	-	-	-
f.	Battery replacment (yearly) - 4 AA per door (LVISDs prefers not to use Duracel) 310 doors (Chris confirm qty)	1,240 battery replament	\$ 3,800-\$4,000/yr	-	-	-	-	-	-
MISC ITEMS OF NOTE			-			-	-		-



					BOND BUDGET:	CAMPUS WIDE SAFETY & SECURITY				Bid Date:	n/a
					TOTAL COST FOR THIS WORK:	See options below				Bid Time:	n/a
					BV Contractor Bid:	n/a				Bldg Area (SF):	Campus Wide
					LVISD Provided:	n/a				ADDENDA:	n/a
					WRP Budget (Estimated taxes) :	n/a				DRAWINGS/SPECS:	n/a
										BUYBOARD REQUIRED:	Yes
					Savings:	n/a					
					GRAND TOTAL	LVISD OWNER CONTINGENCY			BARTLETT BOND 2023 OWNER CONTINGENY		
					PER OPTION	MATERIALS	LABOR	TOTAL	MATERIALS	LABOR	TOTAL
Option 1.0	Campus rekeying / core change (PRI, INT, JS, HS) only				\$ 176,498.00	\$ 97,651.40	\$ 60,030.00	\$ 157,681.40	\$ -	\$ -	\$ -
Option 1.1	Support Center and Central Office only							\$ 18,816.60			
Option 1a	VE Option 3: Deduct 72 core from panic devices (District to flip the device - don't need a new core)				\$ 170,882.00	\$ (5,105.45)	\$ (510.55)	\$ (5,616.00)			
Option 2	Campus rekey & Change from CLASSROOM FUNCTION to STOREROOM FUNCTION on CLASSROOMS only (includes Support Center & Central Office)				\$ 256,122.00	\$ 109,201.00	\$ 119,955.00	\$ 229,156.00	\$ -	\$ -	\$ -
Option 2a	STOREROOM FUNCTION (BOND 2023 PROGRAME - CHANGE PAID THRU the BARTLETT COCKE OWNER CONTINGENCY (included swopping at Primary and Intermediate with ne locks)					\$ -	\$ -	\$ -	\$ 26,966.00	\$ -	\$ 26,966.00
Option 2b	VE Option 2: Deduct if LVISD chooses to install 50 locks at Central Office and Support Buiding				\$ 246,972.00	\$ -	\$ -	\$ -	\$ (8,318.18)	\$ (831.82)	\$ (9,150.00)
Option 3	Campus rekey & WIRELESS LOCKS on CLASSROOMS only				\$ 454,081.00	\$ 290,461.00	\$ 98,955.00	\$ 389,416.00			
Option 3a	NDEB LOCKS (BOND 2023 PROGRAM) - CHANGE PAID THRU THE BARTLETT COCKE OWNER CONTINGENCY					\$ -	\$ -	\$ -	\$ 64,665.00	\$ -	\$ 64,665.00
Option 3a	VE Option 3: Deduct if LVISD chooses to install 50 locks at Central Office and Support Buiding				\$ 444,931.00	\$ -	\$ -	\$ -	\$ (8,318.18)	\$ (831.82)	\$ (9,150.00)
CAMPUS WIDE REKEY - HARDWARE REPLACEMENT ASSESSMENT						MATERIALS			LABOR - STILL TO BE DETERMINED		
NOTES	DESCRIPTION					MATERIAL COSTS	OH&P (10%)	TOTAL	LABOR	OH&P (10%)	TOTAL
OPTION 1 - REKEYING / CORE CHANGE OUT ONLY					-	\$ 105,880.00	\$ 10,588.00	\$ 116,468.00	\$ 54,572.73	\$ 5,457.27	\$ 60,030.00
a.	Quote 06/11/25 Valid for 90 days			09/09/25	-	\$ 88,774.00	\$ 8,877.40	\$ 97,651.40	\$ 54,572.73	\$ 5,457.27	\$ 60,030.00
b.	Schlage Restricted Permanent Cores			1,314	ea	-	-	-	-	-	-
	- Deduct 140 cores for lock conversion					-	-	-	-	-	-
	- Deduct 72 for cylinder dogging removal (this may change based on feed back from Mr. Hill)					-	-	-	-	-	-
c.	Cut keys per core			1	ea	-	-	-	-	-	-
d.	Blank key per core			1	ea	-	-	-	-	-	-
e.	Control keys			10	ea	-	-	-	-	-	-
f.	Master keys			40	ea	-	-	-	-	-	-
g.	SFIC cylinder housing			3	ea	-	-	-	-	-	-
h.	Blank cylinders (dummy cylinders)			17	ea	-	-	-	-	-	-
i.	Central office and Support Services					\$ 17,106.00	\$ 1,710.60	\$ 18,816.60	Included	Included	Included
OPTION 2 - REKEY & MECHANICAL CHANGE from CLASSROOM FUNCTION to STOREROOM FUNCTION on CLASSROOMS only					-	\$ 99,274.00	\$ 9,927.00	\$ 109,201.00	\$ 109,050.00	\$ 10,905.00	\$ 119,955.00
a.	Proposal Pricing Valid			09/10/25	-	-	-	-	-	-	-



NOTES	DESCRIPTION			MATERIAL COSTS	OH&P (10%)	TOTAL	LABOR	OH&P (10%)	TOTAL
b.	Schlage Restricted Permanent Cores (1,102 total)	1,314	ea	-	-	-	-	-	-
	- Deduct 140 cores for lock conversion	(140)	ea	-	-	-	-	-	-
	- Deduct 72 for cylinder dogging removal <i>(this may change based on feed back from Mr. Hill)</i>	(72)	ea	-	-	-	-	-	-
c.	Cut keys per core	1	ea	-	-	-	-	-	-
d.	Blank key per core	1	ea	-	-	-	-	-	-
e.	Control keys	10	ea	-	-	-	-	-	-
f.	Master keys	40	ea	-	-	-	-	-	-
g.	SFIC cylinder housing <i>(what is this 3?)</i>	3	ea	-	-	-	-	-	-
h.	Blank cylinders (dummy cylinders)	17	ea	-	-	-	-	-	-
i.	New Schlage ND Storeroom Fuction Locks for Classrooms	42	ea	-	-	-	-	-	-
j.	Schalge ND Conversion kits to turn Classroom function into Storeroom function on existing locks	140	ea	-	-	-	-	-	-
k.	Schalge Key Cam to convert 26 existing locks to Storeroom function on Classroom doors	26	ea	-	-	-	-	-	-
l.	Falcon T Series lock chasis to convert existing locks to Storeroom function on Classrooms	7	ea	-	-	-	-	-	-
m.	Spacer rings and 2-3/8" latches to use repurposed entry locks at Central Office and Support Buildings	50	ea	-	-	-	-	-	-
OPTION 2a - STOREROOM FUNCTION LOCKS (BOND 2023 PROGRAM) - CHANGE PAID THRU THE BARTLETT COCKE OWNER CONTINGENCY			-	24,515.00	\$ 2,451.00	\$ 26,966.00	\$ -	\$ -	\$ -
a.	Proposal Pricing Valid	09/10/25	-	-	-	-	-	-	-
b.	Storeroom function locks for classroom doors	72	ea	-	-	-	-	-	-
c.	Locks at Primary & Intermediate swapped out with specifed entry function locks	32	ea	-	-	-	-	-	-
	- Entry function locks to be reboxed and handed over to LVISD to be repurposed			-	-	-	-	-	-
	- Re-installation included			-	-	-	-	-	-
d.	Locks at High School and Jr High to be installed during intital installation	40	ea	-	-	-	-	-	-
	- Entry function locks will not be installed and will be turned over to LVISD	17	ea	-	-	-	-	-	-
OPTION 3 - REKEY & WIRELESS LOCKS on CLASSROOMS only			-	\$ 264,055.00	\$ 26,406.00	\$ 290,461.00	\$ 89,959.09	\$ 8,995.91	\$ 98,955.00
a.	Proposal Pricing Valid	09/10/25	-	-	-	-	-	-	-
	- Deduct 140 cores for lock conversion	Chris - confirm if this needs to be adjusted to accomm		-	-	-	-	-	-
	- Deduct 72 for cylinder dogging removal	Chris - confirm if this needs to be adjusted to accomm		-	-	-	-	-	-
b.	Cut keys per core	1	ea	-	-	-	-	-	-
c.	Blank key per core	1	ea	-	-	-	-	-	-
d.	Control keys	10	ea	-	-	-	-	-	-
e.	Master keys	40	ea	-	-	-	-	-	-
f.	SFIC cylinder housing <i>(what is this 3?)</i>	3	ea	-	-	-	-	-	-
g.	Blank cylinders (dummy cylinders)	17	ea	-	-	-	-	-	-



NOTES	DESCRIPTION			MATERIAL COSTS	OH&P (10%)	TOTAL	LABOR	OH&P (10%)	TOTAL
h.	Schlage NDEB Wireless access control locks for classrooms	238	ea	-	-	-	-	-	-
i.	Spacer rings and 2-3/8" latches to use repurposed entry locks	50	ea	-	-	-	-	-	-
OPTION 3a - NDEB LOCKS (BOND 2023 PROGRAM) - CHANGE PAID THRU THE BARTLETT COCKE OWNER CONTINGENCY			-	58,787.00	\$ 5,878.00	\$ 64,665.00	\$ -	\$ -	\$ -
a.	Proposal Pricing Valid	09/10/25	-	-	-	-	-	-	-
b.	NDEB-B-RHO 13-247 626 wireless access control locks for classroom doors	72	ea	-	-	-	-	-	-
c.	Locks at Primary & Intermediate swapped out with specifed entry function locks	32	ea	-	-	-	-	-	-
	- Entry function locks to be reboxed and handed over to LVISD to be repurposed			-	-	-	-	-	-
	- Re-installation included			-	-	-	-	-	-
d.	Locks at High School and Jr High to be installed during intital installation	40	ea	-	-	-	-	-	-
	- Entry function locks will not be installed and will be turned over to LVISD	17	ea	-	-	-	-	-	-
ONE TIME COST - Wireless Lock Replacement Parts Price List			-	-	\$ -	\$ -	\$ -	\$ -	\$ -
a.	Proposal Pricing Valid	06/30/25	-	-	-	-	-	-	-
b.	Entire NDEB-B-RHO unit (highly unlikely - may only need to replace components. Price per component below)	cost to replace per unit	\$ 850.00	-	-	-	-	-	-
b.	Battery Holder Kit (4/ea AA Batteries not included) N223-044	cost to replace per unit	\$ 32.00	-	-	-	-	-	-
c.	Motorized Chasis Assembly N223-007	cost to replace per unit	\$ 374.00	-	-	-	-	-	-
d.	Outside Escutcheon Assembly N223-007	cost to replace per unit	\$ 129.00	-	-	-	-	-	-
e.	Inside Escutcheon Assembly (includes battery holder kit) 47278740	cost to replace per unit	\$ 572.00	-	-	-	-	-	-
f.	Battery replacment (yearly) - 4 AA per door (LVISDs prefers not to use Duracel) 310 doors (Chris confirm qty)	1,240 battery replament	\$ 3,800-\$4,000/yr	-	-	-	-	-	-
MISC ITEMS OF NOTE			-			-	-		-



2425 Brockton #101 San Antonio, TX 78217 Ph: (210) 826-6616 Fax: (210) 826-6900

8219 Burleson Rd. Ste 100 Austin, TX 78744 Ph: (512) 491-6088 Fax: (210) 491-6554

2810 N. Expressway 77 Ste. F Harlingen, TX 78552 Ph: (956) 440-8160 Fax: (956) 440-8260

"We do what we say we are going to do, when we say we are going to do it and for the dollar amount we said it could be done"

La Vernia ISD District Wide Re-Key and Classroom Door Function Change (06.11.25 meeting)

Scope of Work

- All pricing will be submitted to LVISD School Board in July board meeting
- LVISD will issue a purchase agreement, upon board approval, around the end of July / beginning of August
- Allegion is handling the keying meeting and key system design with LVISD, and the permanent cores / keys will be shipped directly to LVISD
- Installation to begin upon receipt of new hardware around the beginning of October 2025
- LVISD is expecting us to be done with all scope by end of May 2026
- There are complete floor plans with all door #'s identified for all buildings available in Procore and in PDF form
- There are 2 options for LVISD to select from: 1-Change all classroom doors to storeroom function with either a new lock or lock function conversion kits; 2-Change all classroom doors to wireless Schlage NDEB battery powered access lock
- Swapping out all existing SFIC cores with new Schlage R-Restricted SFIC cores is included in both options
- If swapping parts does not work on any particular lock, the district will provide a new lock to AD8 from their stock and we will turn over the other lock and parts to LVISD for stock
- Scotty Bailey with Allegion will assist and train AD8 techs in lock parts swap out scope if that option is selected
- If Wireless Lock Option is selected, Scotty Bailey with Allegion will program the wireless locks and train LVISD on how to use them
- If AD8 encounters other issues besides lock swap scope at any particular door, AD8 will notify the LVISD Maintenance Director and they will put in a service ticket to LVISD Maintenance techs to address the issues
- All lock swap work will have a 1 year installation warranty from date of completion
- LVISD has a 4 day school schedule, Monday – Thursday
- Work can be performed at any time on doors that are not classroom doors
- Classroom door scope can be done on any Friday or any school holiday
- These are the school holidays that occur on Monday – Thursday during the school year: November 24 – 27, December 22 – 31, January 1, March 9-12, May 25

Quantities for both mechanical and wireless lock options on page 2



2425 Brockton #101 San Antonio, TX 78217 Ph: (210) 826-6616 Fax: (210) 826-6900

8219 Burleson Rd. Ste 100 Austin, TX 78744 Ph: (512) 491-6088 Fax: (210) 491-6554

2810 N. Expressway 77 Ste. F Harlingen, TX 78552 Ph: (956) 440-8160 Fax: (956) 440-8260

"We do what we say we are going to do, when we say we are going to do it and for the dollar amount we said it could be done"

Option 2 Mechanical Lock Quantities:

LVISD PO Scope: 1102 cores, 42 new storeroom locks, 173 function conversion kits for existing locks, 72 flip exit rail slide cover to disable dogging, 50 install repurposed entry function locks from Bartlett Cocke scope on Central Office and Support Buildings

Bartlett Cocke Contract Scope: Primary & Intermediate uninstall 32 entry function on classroom doors and turn over to LVISD and install new storeroom function locks, HS & Jr High install 40 new storeroom function locks on classroom doors on initial install and turn entry function locks over to LVISD

Option 3 Wireless Lock Quantities:

LVISD PO Scope: 1102 cores, 238 Schlage NDEB Wireless access control locks, 72 flip exit rail slide cover to disable dogging, 50 repurposed entry function locks from Bartlett Cocke scope on Central Office and Support Buildings

Bartlett Cocke Contract Scope: Primary & Intermediate uninstall 32 entry function on classroom doors and turn over to LVISD and install new Schlage NDEB Wireless access control locks, HS & Jr High install 40 new Schlage NDEB Wireless access control locks on classroom doors on initial install and turn entry function over to LVISD

In attendance:

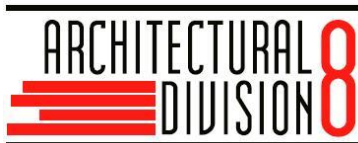
Cliff Hill, LVISD

Brandon Mills, LVISD

Catherine Blackler, AGCM

Scott Bailey, Allegion

Chris Tieman, AD8



2425 Brockton, Suite 101 San Antonio, Texas 78217

Phone: 210-826-6616 Fax: 210-826-6900

"We do what we say we are going to do, when we say we are going to do it and for the dollar amount we said it could be done"

Date:	06/16/25	Proposal No:	061125CWT-ADD
Customer:	LVISD	PAGES:	1
Project Name:	LVISD – Rekey & Mechanical Option 1		
Location:	La Vernia, Texas		

PROPOSAL

Add for 31 Locks / Cores / Parts..... \$18,817.00

Central Office and Support Services, price includes installation

Deduct 72 cores from panic devices..... <\$5,616.00>

Price includes installation

Shipping: FOB jobsite

Terms: QUOTE VOID AFTER 90 DAYS

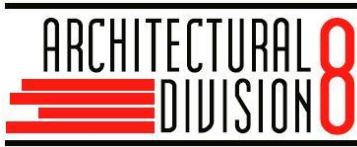
Estimate Prepared By: Chris Tiemann, AHC, CFDAI

Excludes:

Acceptance of Proposal: _____

Printed Name and Title: _____

Date of Acceptance: _____



2425 Brockton, Suite 101 San Antonio, Texas 78217
Phone: 210-826-6616 Fax: 210-826-6900

"We do what we say we are going to do, when we say we are going to do it and for the dollar amount we said it could be done"

Date:	06/16/25	Proposal No:	061125CWT1-INST
Customer:	LVISD	PAGES:	1
Project Name:	LVISD – Rekey Original Option 1		
Location:	La Vernia, Texas		

PROPOSAL

Installation Services for products listed below Option 1..... \$60,030.00

1314 Schlage Restricted Permanent Cores
One cut key per core
One key blank per core
10 Control keys and 40 Master keys
3 SFIC cylinder housings
17 Blank cylinders (dummy cylinders)

Allegion to install all permanent cores required for Bartlett Cocke scope per contract

See attached scope of work for installation qualifications

TOTAL \$60,030.00

Shipping: FOB jobsite

Terms: QUOTE VOID AFTER 90 DAYS

Estimate Prepared By: Chris Tiemann, AHC, CFDAI

Excludes: Materials, Install price only

Acceptance of Proposal: _____

Printed Name and Title: _____

Date of Acceptance: _____



2425 Brockton, Suite 101 San Antonio, Texas 78217
Phone: 210-826-6616 Fax: 210-826-6900

"We do what we say we are going to do, when we say we are going to do it and for the dollar amount we said it could be done"

Date:	06/11/25	Proposal No:	061125CWT1
Customer:	Bartlett Cocke	PAGES:	1
Project Name:	LVISD – Rekey Option 1		
Location:	La Vernia, Texas		

PROPOSAL

Rekey Option 1	\$88,774.00
1314 Schlage Restricted Permanent Cores	
One cut key per core	
One key blank per core	
10 Control keys and 40 Master keys	
3 SFIC cylinder housings	
17 Blank cylinders (dummy cylinders)	

Material Supply Only, Excludes Intallation

Keying Meeting and Key Systems Design to be done by Allegion

TOTAL COST ADD	\$88,774.00
10% MU	\$8,877.00
Total Cost + 10% MU	\$97,651.00

Shipping: FOB jobsite

Terms: QUOTE VOID AFTER 90 DAYS

Estimate Prepared By: Chris Tiemann, AHC, CFDAI

Excludes: Installation

Acceptance of Proposal: _____

Printed Name and Title: _____

Date of Acceptance: _____



2425 Brockton, Suite 101 San Antonio, Texas 78217
Phone: 210-826-6616 Fax: 210-826-6900

"We do what we say we are going to do, when we say we are going to do it and for the dollar amount we said it could be done"

Date:	06/12/25	Proposal No:	061125CWT2-INST
Customer:	LVISD	PAGES:	1
Project Name:	LVISD – Rekey & Mechanical Option 1		
Location:	La Vernia, Texas		

PROPOSAL

Installation Services for products listed below Option 1..... \$119,955.00

1102 Schlage Restricted Permanent Cores
72 exit devices to have slide out cover plate reversed to disable dogging feature
One cut key per core
One key blank per core
10 Control keys and 40 Master keys
3 SFIC cylinder housings
17 Blank cylinders (dummy cylinders)
42 New Schlage ND Storeroom Function Locks for Classrooms
140 Schlage ND Conversion kits to turn Classroom function into Storeroom function on existing locks
26 Schlage Key Cam to convert 26 existing locks to Storeroom function on Classroom doors
7 Falcon T Series lock chassis to convert existing locks to Storeroom function on Classrooms
50 Spacer rings and 2-3/8" latches to use repurposed entry locks at Central Office and Support Buildings

*****Allegation to install all permanent cores required for Bartlett Cocke scope per contract*****

See attached scope of work for installation qualifications

TOTAL \$119,955.00

VE Option 1: Deduct \$9,150.00 if LVISD chooses to install the 50 locks at Central Office and Support Buildings and flips the slide covers on the 72 exit devices to disable the dogging feature themselves

Shipping: FOB jobsite

Terms: QUOTE VOID AFTER 90 DAYS

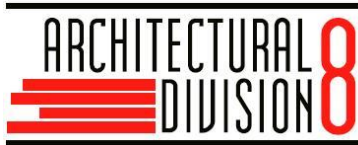
Estimate Prepared By: Chris Tiemann, AHC, CFDAI

Excludes: Materials, Install price only

Acceptance of Proposal: _____

Printed Name and Title: _____

Date of Acceptance: _____



2425 Brockton, Suite 101 San Antonio, Texas 78217
 Phone: 210-826-6616 Fax: 210-826-6900

"We do what we say we are going to do, when we say we are going to do it and for the dollar amount we said it could be done"

Date:	06/12/25	Proposal No:	061125CWT2
Customer:	LVISD	PAGES:	1
Project Name:	LVISD – Rekey & Mechanical Option 1		
Location:	La Vernia, Texas		

PROPOSAL

Rekey & Mechanical Function Change to Storeroom on Classrooms Option 1..... \$99,274.00

1102 Schlage Restricted Permanent Cores

(Deducted 140 cores for lock conversion and 72 for cylinder dogging removal)

One cut key per core

One key blank per core

10 Control keys and 40 Master keys

3 SFIC cylinder housings

17 Blank cylinders (dummy cylinders)

42 New Schlage ND Storeroom Function Locks for Classrooms

140 Schlage ND Conversion kits to turn Classroom function into Storeroom function on existing locks

26 Schlage Key Cam to convert 26 existing locks to Storeroom function on Classroom doors

7 Falcon T Series lock chasis to convert existing locks to Storeroom function on Classrooms

50 Spacer rings and 2-3/8" latches to use repurposed entry locks at Central Office and Support Buildings

Material Supply Only, Excludes Installation

Keying Meeting and Key Systems Design to be done by Allegion

TOTAL COST ADD	\$99,274.00
10% MU	\$9,927.00
Total Cost + 10% MU	\$109,201.00

Shipping: FOB jobsite

Terms: QUOTE VOID AFTER 90 DAYS

Estimate Prepared By: Chris Tiemann, AHC, CFDAI

Excludes: Installation

Acceptance of Proposal: _____

Printed Name and Title: _____

Date of Acceptance: _____



2425 Brockton, Suite 101 San Antonio, Texas 78217
Phone: 210-826-6616 Fax: 210-826-6900

"We do what we say we are going to do, when we say we are going to do it and for the dollar amount we said it could be done"

Date:	06/12/25	Proposal No:	061125CWT4-INST
Customer:	LVISD	PAGES:	1
Project Name:	LVISD – Rekey & Mechanical Option 2-(3)		
Location:	La Vernia, Texas		

PROPOSAL

Installation Services for products listed below Option 2 (3)..... \$98,955.00

1102 Schlage Restricted Permanent Cores
72 exit devices to have slide out cover plate reversed to disable dogging feature
One cut key per core
One key blank per core
10 Control keys and 40 Master keys
3 SFIC cylinder housings
17 Blank cylinders (dummy cylinders)
238 Schlage NDEB Wireless access control locks for classroom doors
50 Spacer rings and 2-3/8" latches to use repurposed entry locks at Central Office and Support Buildings

Allegion to install all permanent cores required for Bartlett Cocke scope per contract

See attached scope of work for installation qualifications

TOTAL \$98,955.00

VE Option 1: Deduct \$9,150.00 if LVISD chooses to install the 50 locks at Central Office and Support Buildings and flips the slide covers on the 72 exit devices to disable the dogging feature themselves

Shipping: FOB jobsite

Terms: QUOTE VOID AFTER 90 DAYS

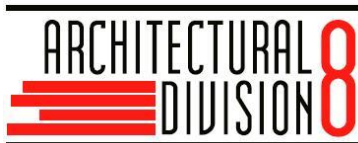
Estimate Prepared By: Chris Tiemann, AHC, CFDAI

Excludes: Materials, Install price only

Acceptance of Proposal: _____

Printed Name and Title: _____

Date of Acceptance: _____



2425 Brockton, Suite 101 San Antonio, Texas 78217

Phone: 210-826-6616 Fax: 210-826-6900

"We do what we say we are going to do, when we say we are going to do it and for the dollar amount we said it could be done"

Date:	06/12/25	Proposal No:	061125CWT4
Customer:	LVISD	PAGES:	1
Project Name:	LVISD – Rekey & Wireless Option 2		
Location:	La Vernia, Texas		

PROPOSAL

Rekey & Wireless Locks on Classrooms Option 2	\$264,055.00
1102 Schlage Restricted Permanent Cores	
(Deducted 140 cores for lock conversion and 72 for cylinder dogging removal)	
One cut key per core	
One key blank per core	
10 Control keys and 40 Master keys	SEE ADD OF \$ 64,665.00 FOR CHANGE OUT TO
3 SFIC cylinder housings	HARDWARE UNDER BOND PROGRAM -
17 Blank cylinders (dummy cylinders)	NEW CLASSROOM ADDITIONS and
238 Schlage NDEB Wireless access control locks for classrooms	NEW JH and HS CLASSROOMS
50 Spacer rings and 2-3/8" latches to use repurposed entry locks at Central Office and Support Buildings	

Material Supply Only, Excludes Intallation

Keying Meeting and Key Systems Design to be done by Allegion

TOTAL COST ADD	\$264,055.00
10% MU	\$26,406.00
Total Cost + 10% MU	\$290,461.00

Shipping: FOB jobsite

Terms: QUOTE VOID AFTER 90 DAYS

Estimate Prepared By: Chris Tiemann, AHC, CFDAI

Excludes: Installation

Acceptance of Proposal: _____

Printed Name and Title: _____

Date of Acceptance: _____



2425 Brockton, Suite 101 San Antonio, Texas 78217
Phone: 210-826-6616 Fax: 210-826-6900

"We do what we say we are going to do, when we say we are going to do it and for the dollar amount we said it could be done"

Date:	06/12/25	Proposal No:	061125CWT3
Customer:	Bartlett Cocke	PAGES:	1
Project Name:	LVISD – NDBE Locks	THIS IS RELATED TO THE BOND 2023 - UNDER BARTLETT COCKE CONTRACT	
Location:	La Vernia, Texas	THIS IS ADDITIONAL COST TO OPTION 2	

PROPOSAL

NDEB Locks..... **\$58,787.00**

72 NDEB-B-RHO 13-247 626 wireless access control locks for classroom doors

32 locks at Primary & Intermediate swapped out with spec'ed entry function locks
Entry function locks to be reboxed and handed over to LVISD to be repurposed
Re-installation included

40 locks at High School and Jr High to be installed during initial installation
Entry function locks will not be installed and will be turned over to LVISD

Programming and owner training to be done by Allegion

TOTAL COST ADD **\$58,787.00**

10% MU **\$5,878.00**

Total Cost + 10% MU **\$64,665.00**

Shipping: FOB jobsite

Terms: QUOTE VOID AFTER 90 DAYS

Estimate Prepared By: Chris Tiemann, AHC, CFDAI

Excludes: programming and owner training

Acceptance of Proposal: _____

Printed Name and Title: _____

Date of Acceptance: _____



2425 Brockton #101 San Antonio, TX 78217 Ph: (210) 826-6616 Fax: (210) 826-6900

8219 Burleson Rd. Ste 100 Austin, TX 78744 Ph: (512) 491-6088 Fax: (210) 491-6554

2810 N. Expressway 77 Ste. F Harlingen, TX 78552 Ph: (956) 440-8160 Fax: (956) 440-8260

"We do what we say we are going to do, when we say we are going to do it and for the dollar amount we said it could be done"

La Vernia ISD District Wide Re-Key and Classroom Door Function Change

Wireless Lock Replacement Parts Price List

Pricing Expires 6/30/2026

Battery Holder Kit (4/ea AA Batteries not included) N223-044.....	\$32.00
Motorized Chasis Assembly N223-007.....	\$374.00
Outside Escutcheon Assembly N223-007.....	\$129.00
Inside Escutcheon Assembly (includes battery holder kit) 47278740.....	\$572.00