



## **ALEDO ISD BOARD MEETING TEMPLATE**

**MEETING DATE:** May 15, 2017

**AGENDA ITEM:** Parking Lot Lights at Daniel Ninth Grade Campus Construction Area

**PRESENTER:** Earl Husfeld

**ALIGNS TO BOARD GOAL(S):** Financial/Facilities – The District shall exhibit excellence in financial and facility planning, management, and stewardship.

**BACKGROUND INFORMATION:**

- The Don R. Daniel Ninth Grade Campus (Ninth Grade Campus) was completed and opened for students and staff in August 2010.

**ADMINISTRATIVE CONSIDERATIONS:**

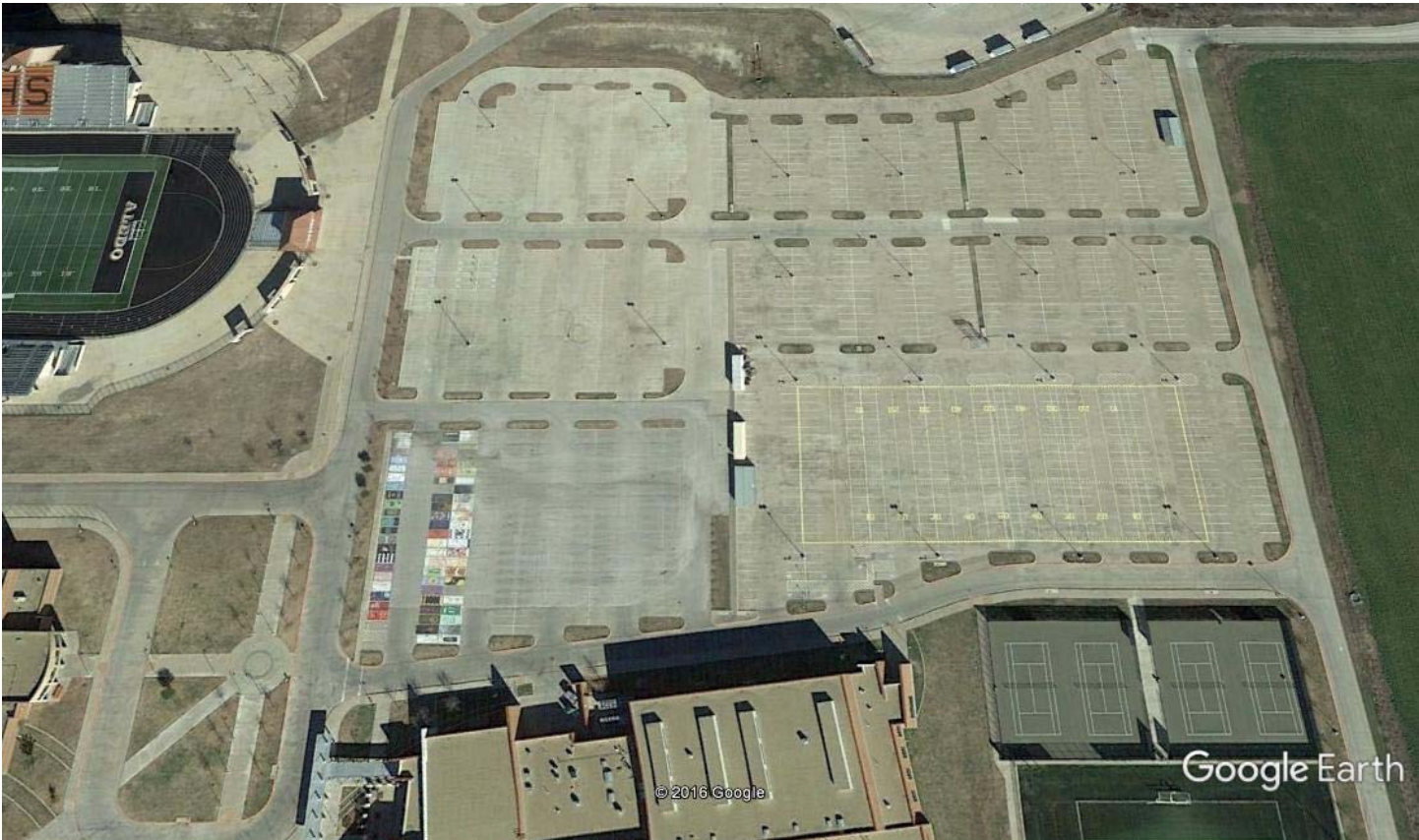
- When construction of the Ninth Grade Campus was completed in 2010, an apparent oversight was the installation of light poles in the construction staging area of the parking lot.
- On the following Google Earth picture, you can see the lack of light poles in the lower left section of the High School/Ninth Grade Campus parking lot. You will also note the coloration of this area is different, as this area has an asphalt base rather than the concrete you see in the remainder of the parking lot.
- To remedy the lack of lighting in this area, we are recommending the installation of four (4) new poles with two (2) 350 watt energy efficient LED light fixtures on each pole. Additionally, on the existing six (6) light poles, we are recommending replacing twelve (12) existing 1000 watt metal halide light fixtures with the same type 350 watt LED light fixtures.
- These actions will make all lighting in front of the stadium and parking lot the same and also save energy. We will be using 7,000 watts instead of 20,000 watts to light the parking lots. We can also use existing lighting circuits instead of having to pull in new conductors.
- At the June board meeting, District staff will present for your consideration proposals/quotes for completion of this project as described to you this evening.

**FISCAL NOTE:**

The projected cost is approximately \$75,000.00. Since the Ninth Grade Campus was built with 2008 bond funds, it is recommended these funds also be used for this project.

**ADMINISTRATIVE RECOMMENDATION:**

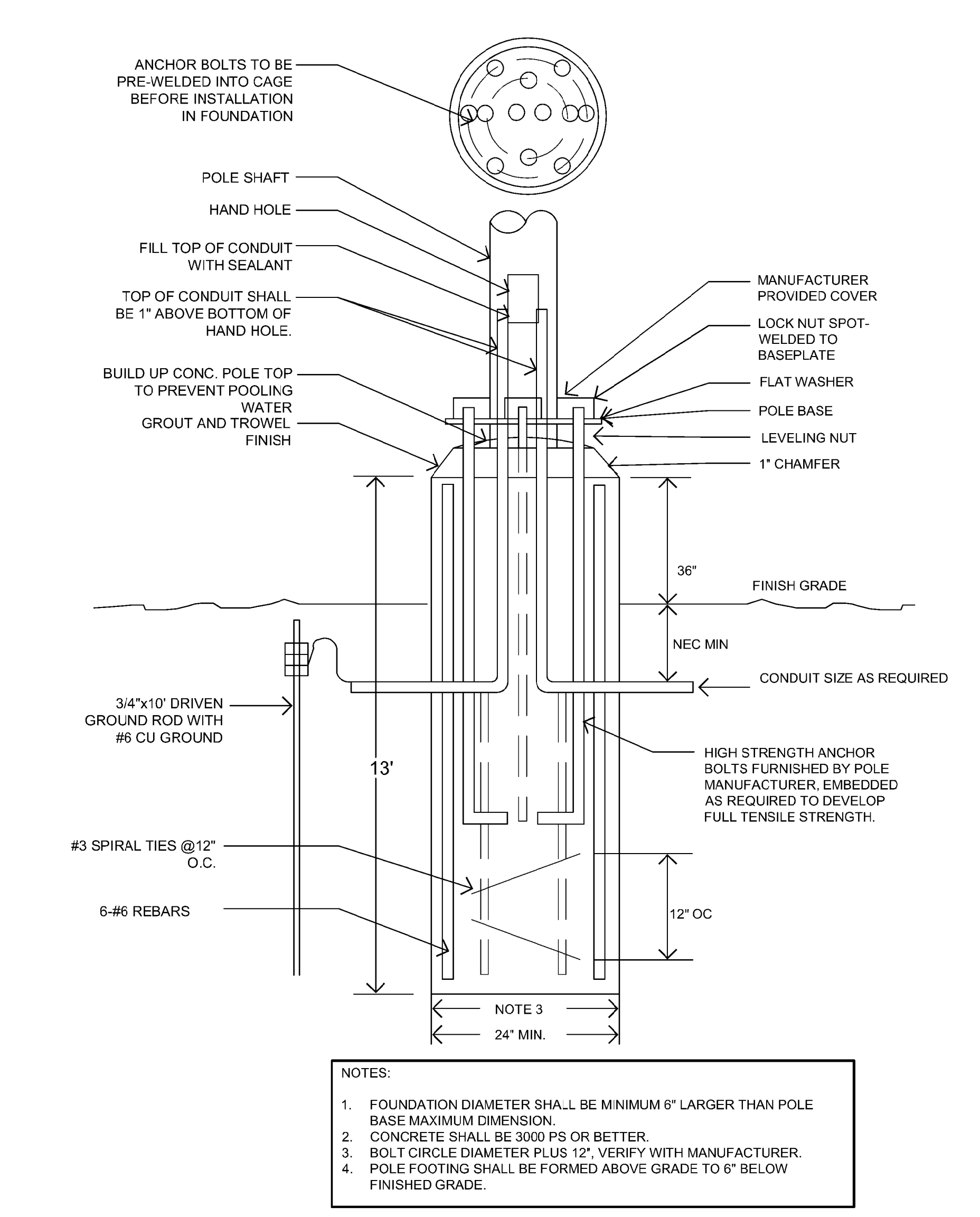
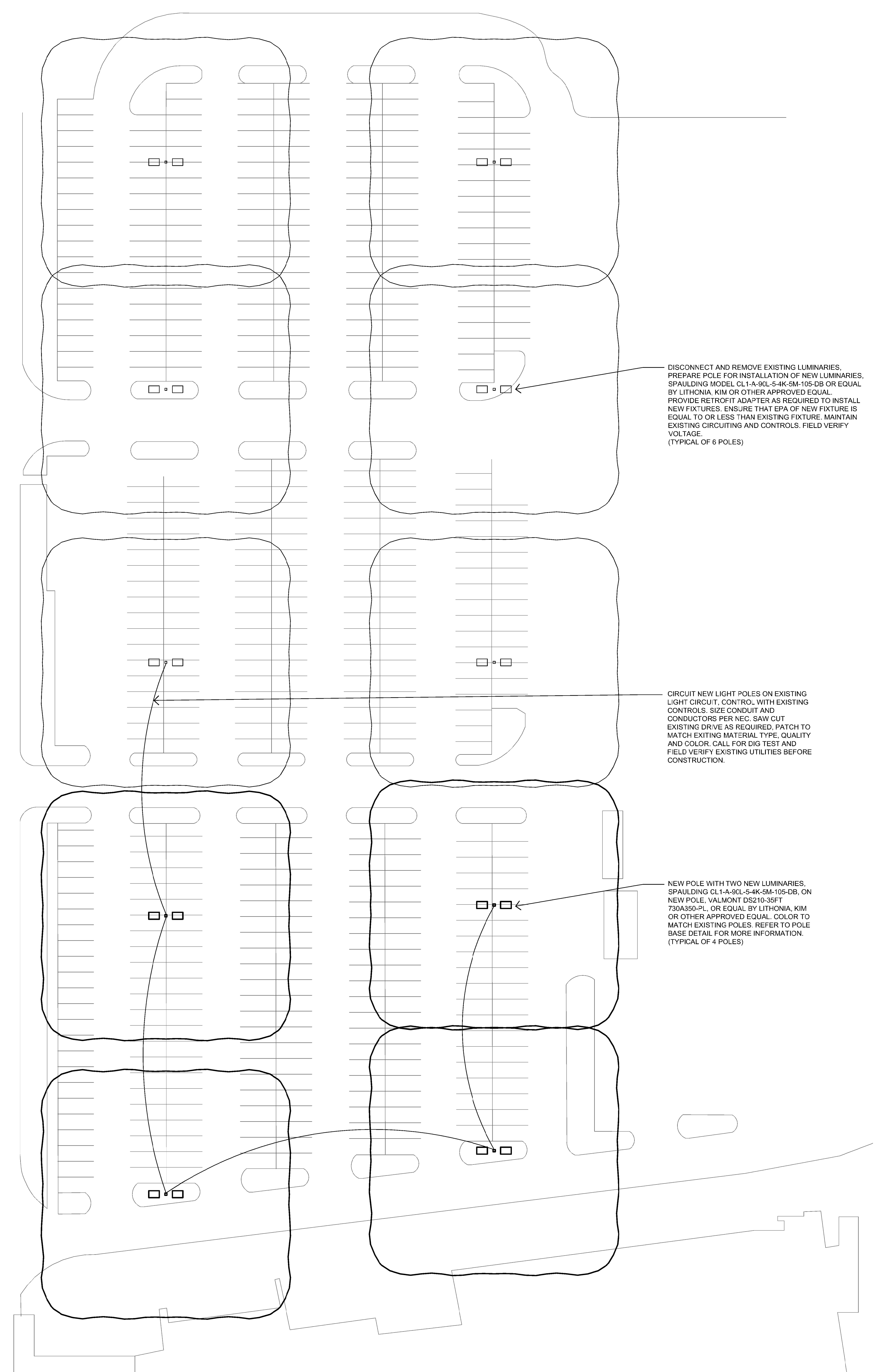
None – Informational Report



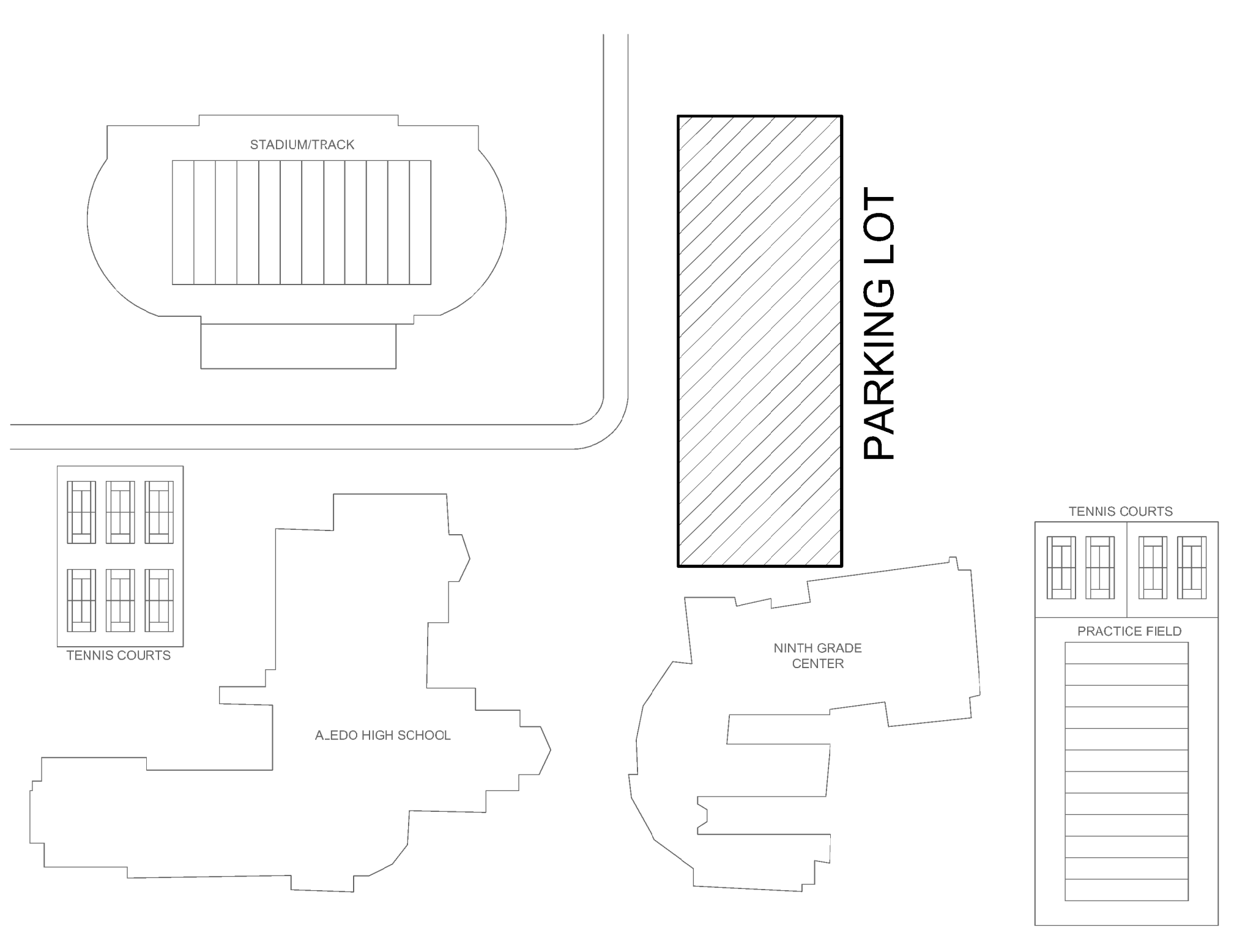
Google Earth



USER: P:\M\ACAD\ENTER\NAC2\ FILE NAME: S:\ALEDO\NINTH GRADE CENTER\17-1017 PARKING LOT LIGHTING\DESIGNED BY DWG TIME: 09 MAY 2017 4:18PM



**C5 AREA LIGHTING POLE DETAIL**  
SCALE: N.T.S.



**A5 KEY PLAN**  
SCALE: N.T.S.

**A2 PARKING LOT LIGHTING PLAN**  
SCALE: 1" = 30'-0"

**IEG** IMAGE ENGINEERING GROUP, LTD.  
1301 SCULPANA BLVD  
BLDG. 11 SUITE 1420  
WESTLAKE, TX 76262  
O 817.410.2858 | C 817.917.5180  
TEXAS REGISTERED ENGINEERING FIRM F-5923

STATE OF TEXAS  
Professional Seal  
58433  
Professional Engineer  
Civil  
ALEXANDER M. WATSON

REVISIONS:

17-1017	05.09.17	MC	IEG	AS NOTED
---------	----------	----	-----	----------

PROJECT NUMBER: 17-1017  
DRAWING DATE: 05.09.17  
DRAWN BY: MC  
CHECKED BY: IEG  
SCALE: AS NOTED  
ACAD FILE: © 2010 IEG, Ltd.

**ALEDO ISD  
NINTH GRADE CENTER  
PARKING LOT LIGHTING**

**A2 PARKING LOT LIGHTING PLAN**

**E2.01**