

# MCKINNEY ISD

## 2024-2025

Every Student, Every Day!

Special Populations



*The McKinney ISD Special Populations Department believes that all individuals are born with inherent value and that all individuals need to feel safe and secure in their learning environment. Further, we believe that all individuals deserve an environment that is conducive to mental, physical and spiritual growth. We also believe that education is a shared responsibility and that personal relationships, especially with parents and adult students are vital to learning.*



# UNDERSTANDING SPECIAL EDUCATION ELIGIBILITY

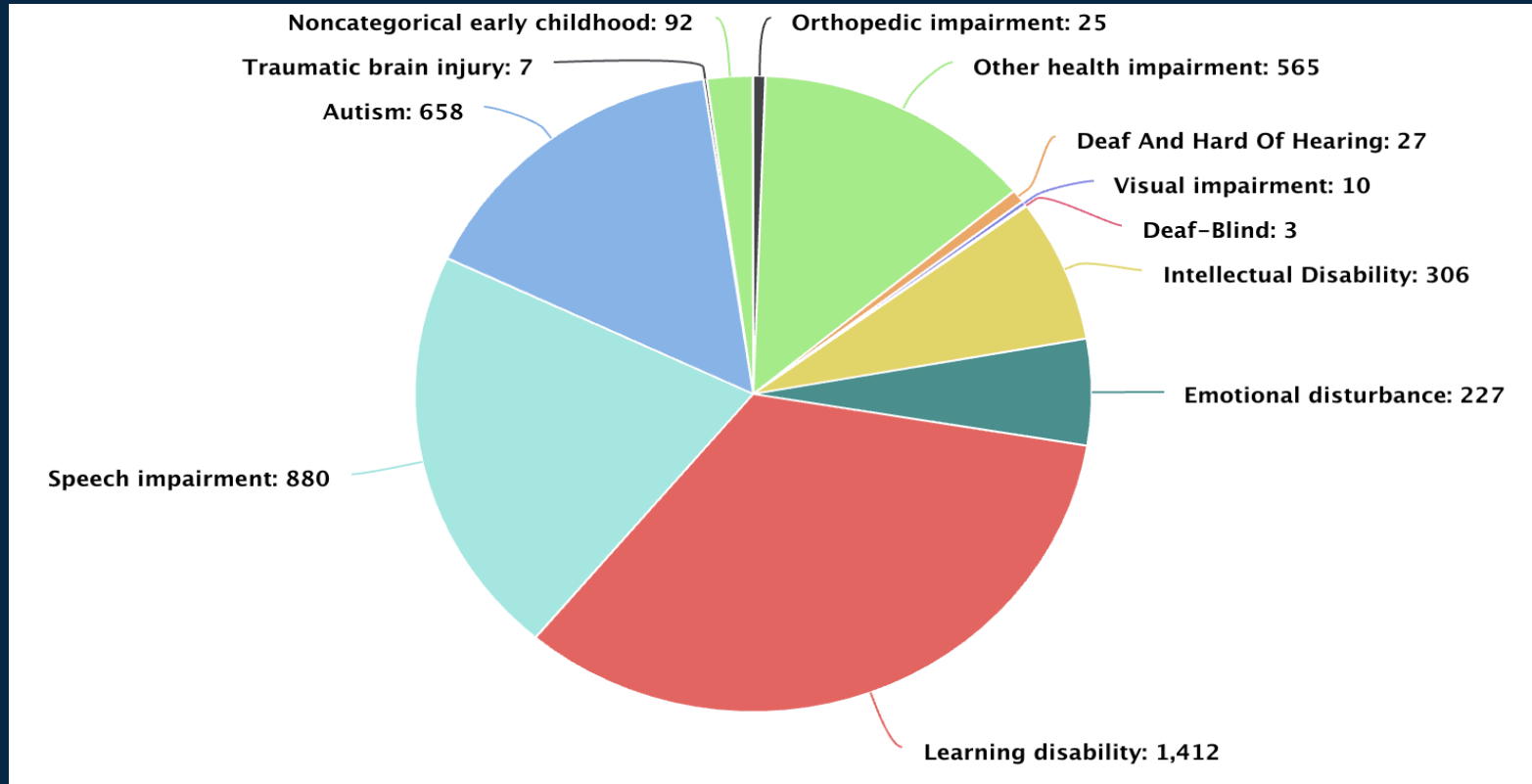


**THE TEXAS LEGAL FRAMEWORK**  
for the Child-Centered Special Education Process

Eligibility for special education and related services is determined through a **two-part requirement** designed to ensure that students receive the appropriate support.

1. **First**, a student must be identified as having a disability.
2. **Second**, due to that disability, the student must require special education and related services in order to make meaningful progress in the general education curriculum.

# MCKINNEY STUDENTS SERVED IN SPECIAL EDUCATION



The following graph shows the number of students by primary eligibility category from PEIMS data on October 31, 2024.

# DISABILITY CATEGORIES AND ELIGIBILITY IN TEXAS

In Texas, children between the ages of 3 and 21 may qualify for special education services under a range of disability categories as defined by state and federal guidelines.

Additionally, children who are Deaf or Hard of Hearing (DHH), Deaf-Blind (DB), or have a Visual Impairment (VI) may be eligible to begin receiving services from their Local Education Agency (LEA) at birth, due to the early and significant impact these disabilities can have on development.



# DEVELOPMENTAL DELAY



# WHAT IS DEVELOPMENTAL DELAY ?

Developmental Delay (DD) is a new special education disability in Texas that is now recognized by TEA.

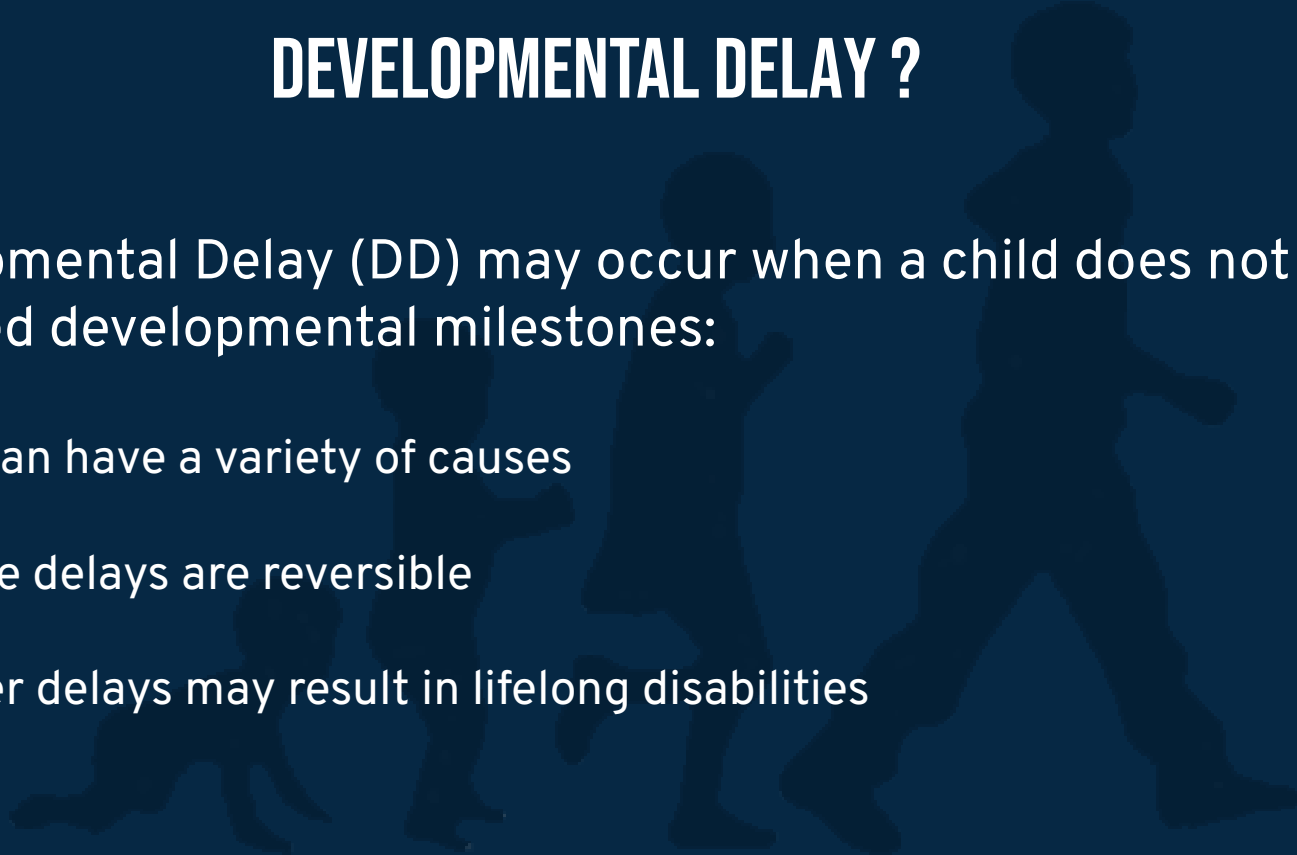
A student with DD is between the ages of 3-9, demonstrates a need for special education, and shows evidence of, but does not clearly confirm, the presence of a suspected disability(ies) due to the child's young age.



# WHAT IS DEVELOPMENTAL DELAY ?

Developmental Delay (DD) may occur when a child does not reach expected developmental milestones:

- DD can have a variety of causes
- Some delays are reversible
- Other delays may result in lifelong disabilities





# WHAT IS DEVELOPMENTAL DELAY ?

The following areas of development can be considered by the ARDC in the identification of DD:

- **Physical Development**
- **Cognitive Development**
- **Communication Development**
- **Social or Emotional Development**
- **Adaptive Development**



# A CLEAR LOOK AT DEVELOPMENTAL DELAY

**Not a substitute for another disability**

**Distinct from Non-Categorical Early Childhood (NCEC)**



According to the Texas Education Agency, beginning in the 2025-2026 school year, identifications for Non-Categorical Early Childhood (NCEC) will no longer be made.

# KEY DIFFERENCES: NCEC AND DD

## Non-Categorical Early Childhood

- NCEC goes up to age 6
- NCEC requires meeting criteria for a disability

## DEVELOPMENTAL DELAY

- DD goes up to age 9
- DD rules out meeting criteria for another disability



# TEA RESOURCES

## TEA Quick Guide for Identifying and Determining Eligibility for Special Education Services

This guide provides a clear overview of how to identify and determine eligibility for special education services for children with a developmental delay (DD). It includes:


- **FAQs** that offer helpful tips and best practices for identifying DD.
- **Recommendations** for teachers, special education staff, administrators, and other professionals.

This guide serves as a valuable resource for those involved in supporting children with developmental delays.

### Developmental Delay Quick Guide and Frequently Asked Questions

#### INTRODUCTION

This quick guide outlines the criteria for identifying and determining eligibility for special education and related services for children with a developmental delay (DD). The frequently asked questions (FAQs) provide recommendations and best practices for identifying DD. The quick guide is a resource for teachers, special education personnel, administrators, and other professionals.




#### ELIGIBILITY DEFINITION


Developmental delay is an eligibility category in the Individuals with Disabilities Education Act (IDEA) that may be used for certain children in a specific age group who are experiencing developmental delays, as determined and defined under state law. ([34 Code of Federal Regulations \(CFR\), §300.8\(b\)](#))

In Texas, DD ([19 Texas Administrative Code \(TAC\) 89.1040\(c\)\(13\)](#)) is one possible eligibility category for children beginning at age three and continuing through age nine.



##### Developmental Delay Criteria

- Between the ages of 3 through 9
- Evaluated by a [multidisciplinary team \(MDT\)](#) for at least one [disability category](#) (autism, deaf-blindness, deaf or hard of hearing, emotional disability, intellectual disability, multiple disabilities, orthopedic impairment, other health impairment, specific learning disability, speech impairment, traumatic brain injury, or visual impairment) and
- Evaluation data indicates a need for special education and related services and shows evidence of, but does not clearly confirm, the presence of the suspected disability or disabilities due to the child's young age.

 **NOTE:** As its definition suggests, the disability criteria for DD is not the first consideration for the MDT. A child would be referred for evaluation based on a suspicion that the child has one or more of the other IDEA-eligible disabilities, and then the MDT would conduct a review of existing evaluation data (REED) to determine how best to proceed with the evaluation.

 **NOTE:** The eligibility category of [noncategorical early childhood \(NCEC\)](#) may be used until the 2025-2026 school year. Any eligible child who begins the 2025-2026 school year already identified as NCEC may maintain this eligibility category, if determined appropriate by the child's ARD committee, until the required re-evaluation before the age of six.

Copyright © 2024, Texas Education Agency. All Rights Reserved.

Page 1

# TEA RESOURCES

## Special Education Resources for Parents and Families:

**SPEDTex**



**Partners  
Resource  
Network**



### Additional Special Education Resources:

**The Texas Legal Framework**



**TEA Special Education Page**



### Special Education Resources for Parents and Families:

**SPEDTex**



**Partners  
Resource  
Network**



### Department of Special Education:



**TEA Special Education  
Website**



**Sped@tea.texas.gov**



**512-463-9414**

**EVERY STUDENT,  
EVERY DAY!**

