

# ENROLLMENT GRAPHS & TABLES

10/23/2020

**RED WING**

**256**

**Method**

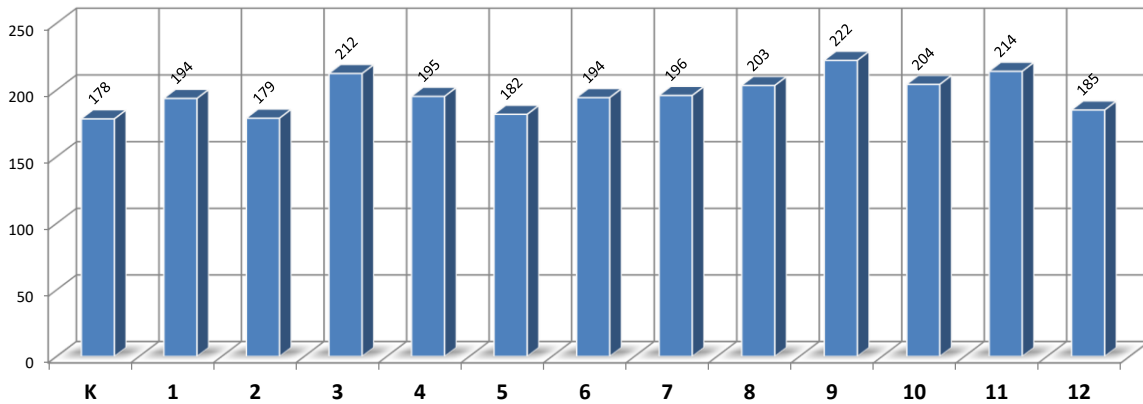
The selected History for Tables & Graphs was: **END OF YEAR A.D.M.**

with **MERGED**

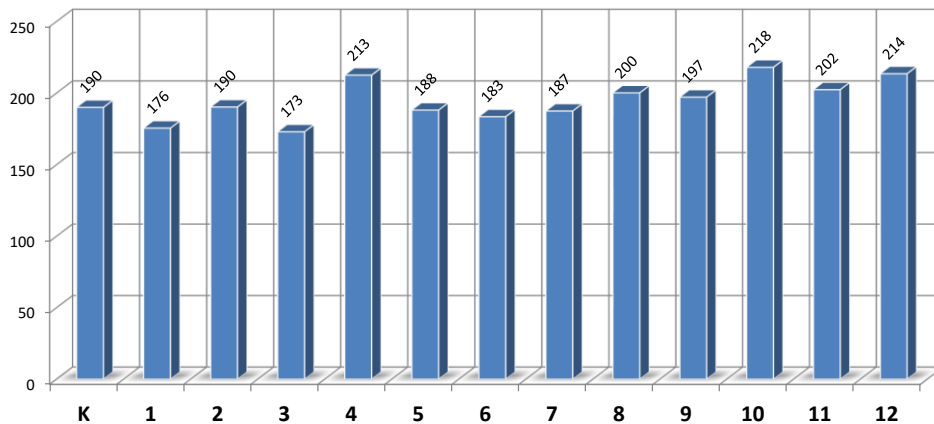
**(8)**

|               | Enrollment History - END-OF-YEAR ADM DATA |         |         |         |         |         |         | Enrollment Projections - END-OF-YEAR ADM DATA |         |         |         |         |
|---------------|---|---------|---------|---------|---------|---------|---------|---|---------|---------|---------|---------|
|               | 2014-15                                   | 2015-16 | 2016-17 | 2017-18 | 2018-19 | 2019-20 | 2020-21 | 2021-22                                       | 2022-23 | 2023-24 | 2024-25 | 2025-26 |
| EC            | 38.1                                      | 37.5    | 42.6    | 49.9    | 49.7    | 46.0    | 44.1    | 43.3  | 43.3    | 43.3    | 47.0    | 47.0    |
| VPK           | 0.0                                       | 0.0     | 0.0     | 0.0     | 0.0     | 0.0     | 0.0     | 0.0   | 0.0     | 0.0     | 0.0     | 0.0     |
| K             | 197.3                                     | 180.3   | 190.0   | 221.4   | 179.9   | 202.0   | 178.4   | 190.0   | 190.0   | 190.0   | 190.0   | 190.0   |
| 1             | 202.5                                     | 201.1   | 179.2   | 191.0   | 226.3   | 186.7   | 193.7   | 175.5   | 187.4   | 187.4   | 187.4   | 187.4   |
| 2             | 205.4                                     | 208.3   | 208.0   | 187.7   | 196.6   | 222.1   | 178.9   | 190.3   | 172.9   | 184.6   | 184.6   | 184.6   |
| 3             | 226.1                                     | 203.2   | 204.2   | 202.5   | 190.1   | 194.3   | 212.3   | 173.0   | 184.5   | 167.3   | 178.9   | 178.9   |
| 4             | 208.1                                     | 230.9   | 201.5   | 202.9   | 195.5   | 194.2   | 195.2   | 212.5   | 173.0   | 184.4   | 167.3   | 178.9   |
| 5             | 217.3                                     | 218.4   | 231.3   | 201.9   | 205.9   | 192.4   | 181.7   | 188.1   | 205.6   | 166.7   | 178.0   | 161.2   |
| 6             | 199.5                                     | 225.5   | 208.6   | 235.2   | 207.1   | 204.3   | 194.3   | 183.5   | 190.0   | 207.5   | 168.5   | 179.9   |
| 7             | 207.5                                     | 199.0   | 214.3   | 206.3   | 235.0   | 196.9   | 195.9   | 187.5   | 177.1   | 183.6   | 200.9   | 162.3   |
| 8             | 207.2                                     | 210.1   | 194.0   | 212.6   | 212.6   | 234.7   | 203.4   | 200.2   | 191.5   | 181.0   | 187.5   | 205.0   |
| 9             | 217.9                                     | 210.4   | 209.2   | 201.4   | 216.7   | 208.3   | 222.2   | 197.2   | 194.7   | 186.1   | 175.8   | 182.3   |
| 10            | 186.5                                     | 217.5   | 213.9   | 205.9   | 194.3   | 213.6   | 204.2   | 218.0   | 193.2   | 190.7   | 182.2   | 172.0   |
| 11            | 202.7                                     | 184.0   | 212.4   | 200.1   | 203.9   | 193.1   | 214.0   | 202.4   | 215.7   | 191.0   | 188.5   | 180.0   |
| 12            | 194.2                                     | 206.0   | 194.2   | 220.8   | 210.8   | 218.0   | 185.0   | 213.5   | 202.4   | 215.7   | 191.1   | 188.6   |
| K-12          | 2,672.2                                   | 2,694.5 | 2,660.7 | 2,689.7 | 2,674.6 | 2,660.7 | 2,559.0 | 2,531.7                                       | 2,477.9 | 2,436.1 | 2,380.7 | 2,351.1 |
| Pre K-12      | 2,710.3                                   | 2,732.1 | 2,703.3 | 2,739.7 | 2,724.3 | 2,706.7 | 2,603.2 | 2,575.0                                       | 2,521.2 | 2,479.4 | 2,427.8 | 2,398.1 |
| % Change K-12 |   | 0.84%   | -1.26%  | 1.09%   | -0.56%  | -0.52%  | -3.82%  | -1.07%  | -2.12%  | -1.69%  | -2.27%  | -1.25%  |

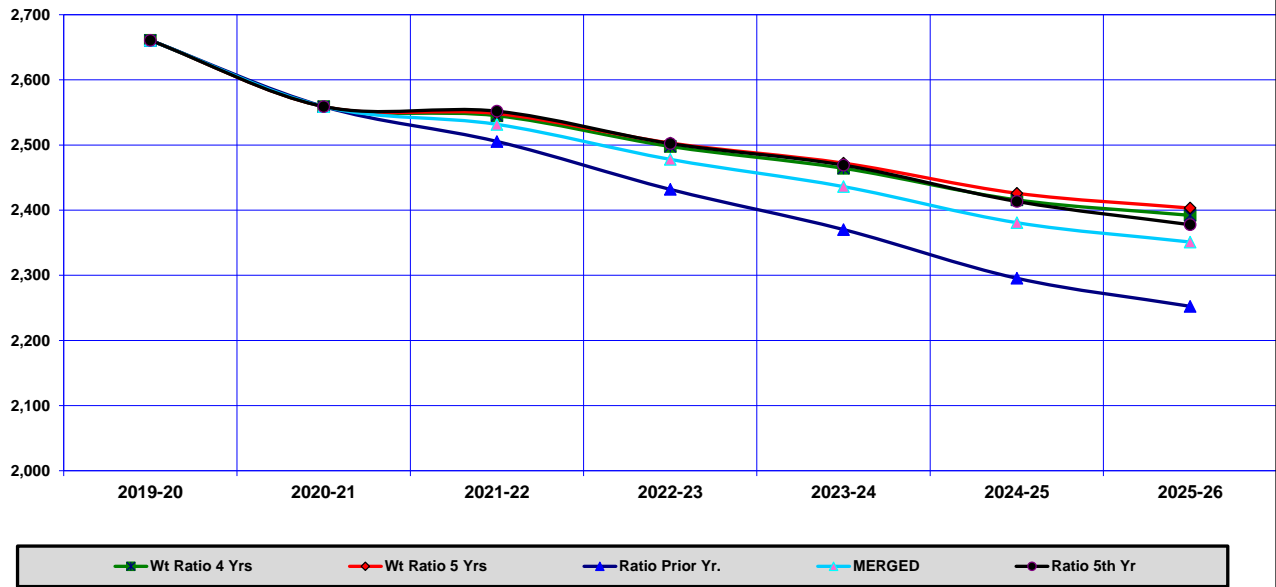
**Enrollment by Grade for Current Year 2020-21**



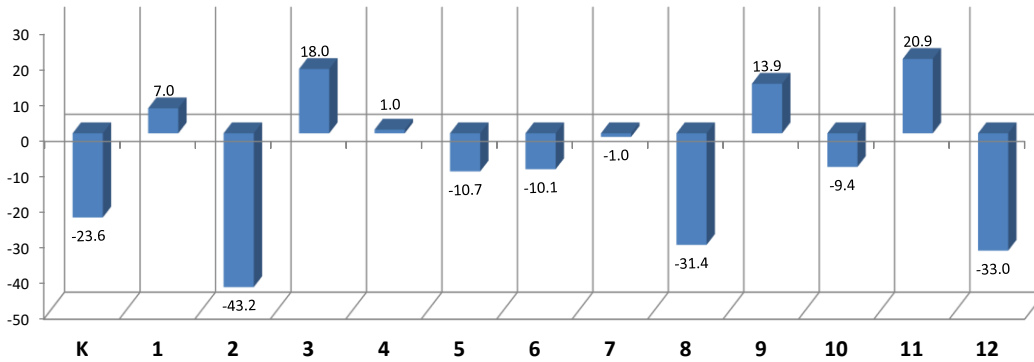
**Enrollment by Grade for 1st Projection Year 2021-22**



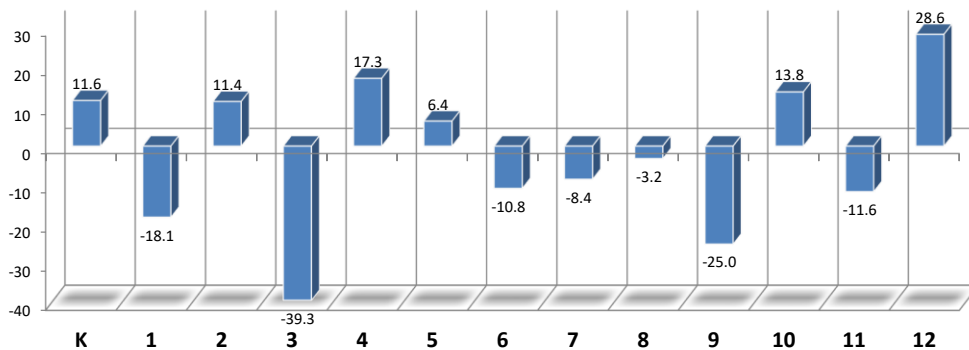
Enrollment Graph of Projections Selected on the DATA Worksheet.



Enrollment Change by Grade for the Current Year 2020-21



Enrollment Change by Grade for the 1st Projection Year 2021-22



**ENPRO is the Enrollment Projection System of SchoolFinances.Com**

**Projecting Enrollment from Prior Enrollments is a Computational Process**

To understand the components programmed into this system the user must understand Cohort Survival, Weighted Cohort Survival, and the Numerical Survival or Change Methodology

The Projection used in this result is for RED WING 256  
 The methodology used for this report is **MERGED**

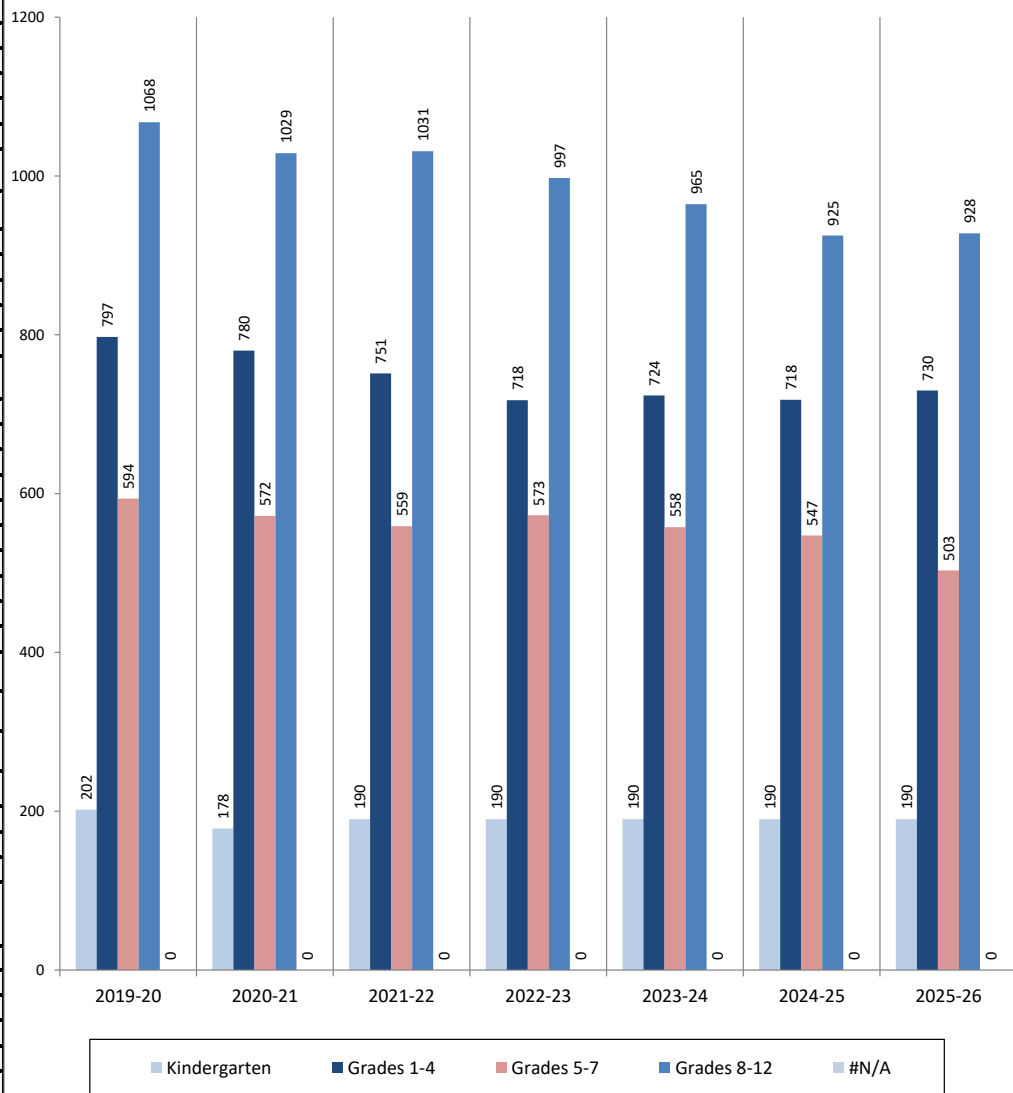
The projection for K-12 anticipates an enrollment change of -27.4 From 2020-21 to 2021-22 (1) yr.  
 The projection for K-12 anticipates an enrollment change of -208.0 From 2020-21 to 2025-26 (5) yrs.

Enrollment Projections by District Grade Groupings present these changes by grouping.

**Grade Groupings**

- 1 Kindergarten
- Grades K-1
- Grades K-2
- Grades K-3
- Grades 1-2
- Grades 1-3
- 2 Grades 1-4
- Grades 1-5
- Grades 1-6
- Grades 1-7
- Grades 1-8
- Grades 2-3
- Grades 2-4
- Grades 2-5
- Grades 2-6
- Grades 3-4
- Grades 1-3
- Grades 3-6
- Grades 3-7
- Grades 4-5
- Grades 4-6
- Grades 4-7
- Grades 4-8
- Grades 5-6
- 3 Grades 5-7
- Grades 5-8
- Grades 6-7
- Grades 6-8
- Grades 6-9
- Grades 7-8
- Grades 7-9
- Grades 7-12
- Grades 8-9
- Grades 8-10
- 4 Grades 8-12
- Grades 9-10
- Grades 9-12
- Grades 10-12
- Grades 11-12
- Grade 12

**Current and Projected Enrollment by Grade Groupings**



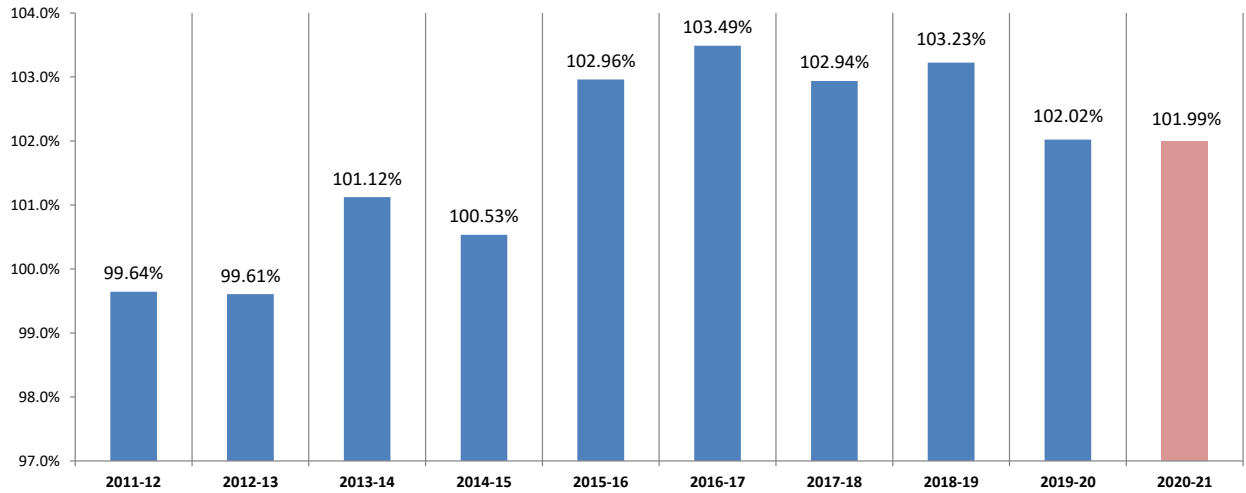
|                   | Grade Group  | Prior Yr.      | Current Yr.    | Projection Years |                |                |                |                |
|-------------------|--------------|----------------|----------------|------------------|----------------|----------------|----------------|----------------|
|                   |              | 2019-20        | 2020-21        | 2021-22          | 2022-23        | 2023-24        | 2024-25        | 2025-26        |
| 1                 | Kindergarten | 202.0          | 178.4          | 190.0            | 190.0          | 190.0          | 190.0          | 190.0          |
| 2                 | Grades 1-4   | 797.3          | 780.1          | 751.3            | 717.7          | 723.8          | 718.2          | 729.8          |
| 3                 | Grades 5-7   | 593.7          | 571.9          | 559.1            | 572.7          | 557.8          | 547.4          | 503.4          |
| 4                 | Grades 8-12  | 1,067.7        | 1,028.7        | 1,031.3          | 997.5          | 964.5          | 925.2          | 927.9          |
| 5                 | #N/A         | 0.0            | 0.0            | 0.0              | 0.0            | 0.0            | 0.0            | 0.0            |
| <b>Total K-12</b> |              | <b>2,660.7</b> | <b>2,559.0</b> | <b>2,531.7</b>   | <b>2,477.9</b> | <b>2,436.1</b> | <b>2,380.7</b> | <b>2,351.1</b> |

Data is taken from ENHIST DATA to Compute Change in Enrollment During the Year and Percent

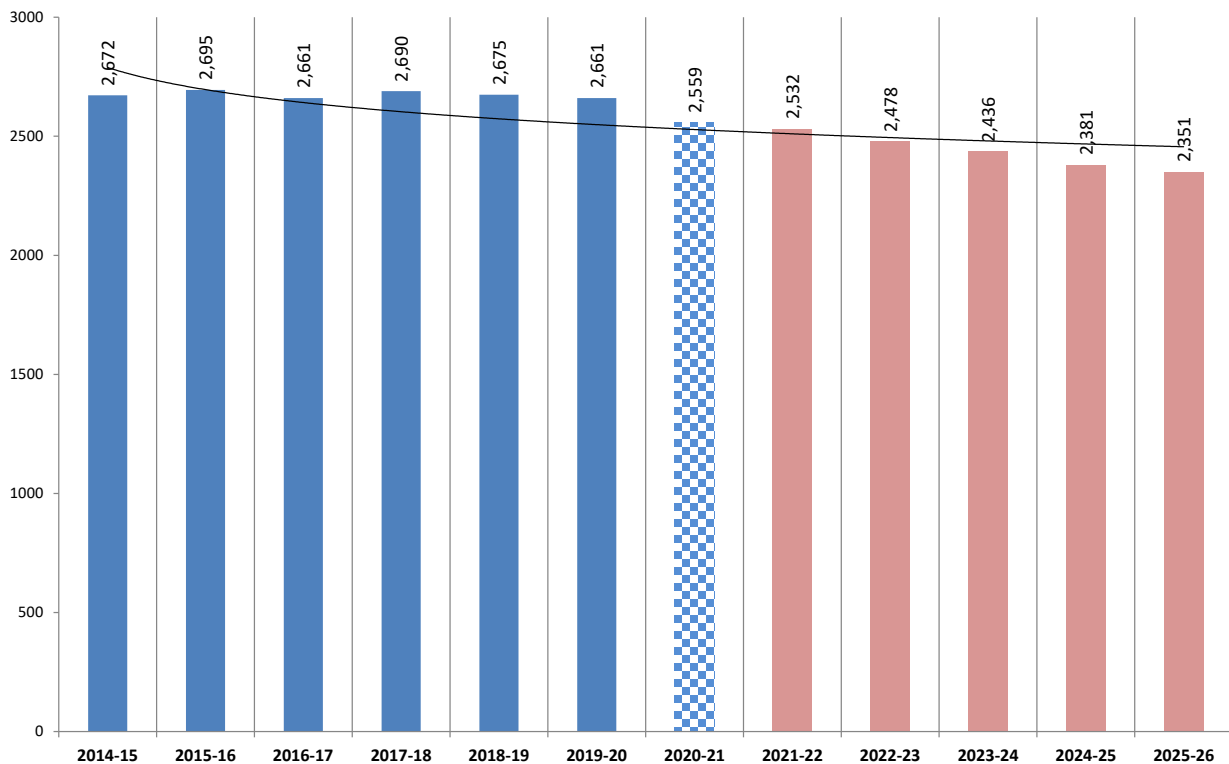
This percentage may be used in the FPM for estimating Change if Fall Enrollment is used for Projections

|                     | 2011-12  | 2012-13  | 2013-14  | 2014-15  | 2015-16  | 2016-17  | 2017-18  | 2018-19  | 2019-20  | 2020-21  |
|---------------------|----------|----------|----------|----------|----------|----------|----------|----------|----------|----------|
| Fall Data K-12      | 2,822    | 2,777    | 2,679    | 2,658    | 2,617    | 2,571    | 2,613    | 2,591    | 2,608    | 2,509    |
| EOY ADM K-12        | 2,811.92 | 2,766.06 | 2,709.04 | 2,672.18 | 2,694.53 | 2,660.68 | 2,689.73 | 2,674.57 | 2,660.70 | 2,559.04 |
| % Fall to End-of-Yr | 99.64%   | 99.61%   | 101.12%  | 100.53%  | 102.96%  | 103.49%  | 102.94%  | 103.23%  | 102.02%  | 101.99%  |

Percent of End-of-Year Adjusted ADM to Fall Enrollment



K-12 ENROLLMENT HISTORY & PROJECTED TOTAL ENROLLMENT



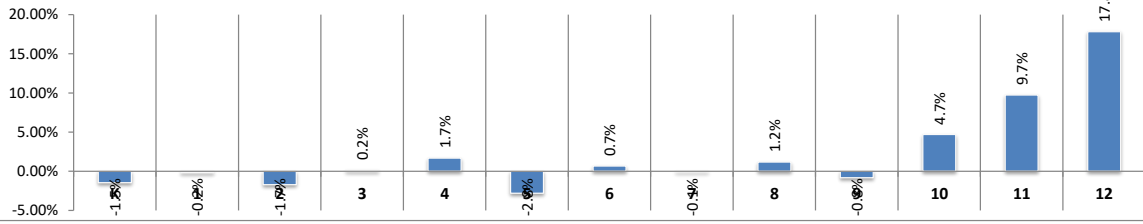
# Enrollment History Graphs

These graphs are drawn from ENHIST and would not include Enrollment Adjustments

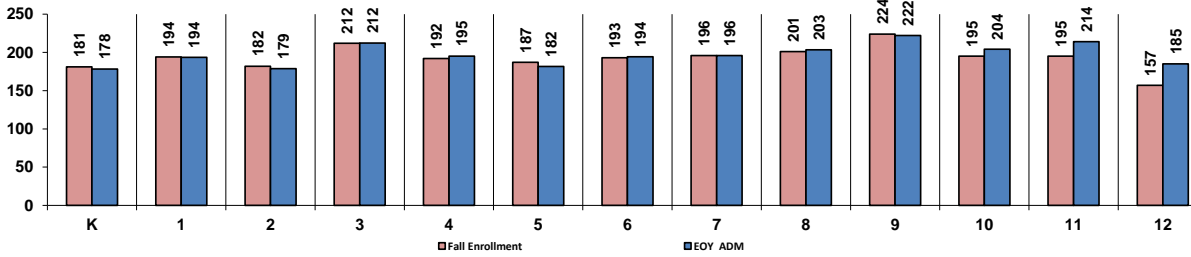
**RED WING**

**256**

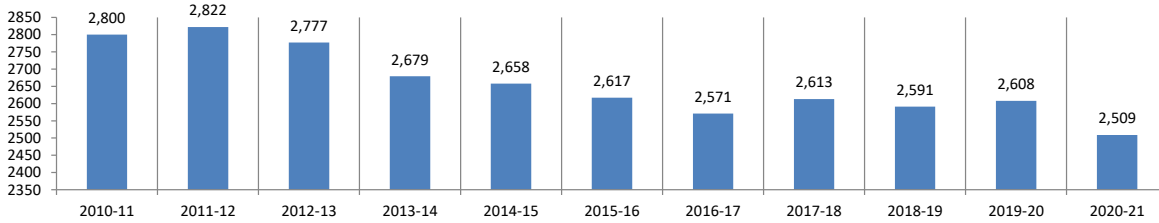
**2020-21 % Change in Fall Enrollment /Est. EOY Adjusted ADM by Grade**



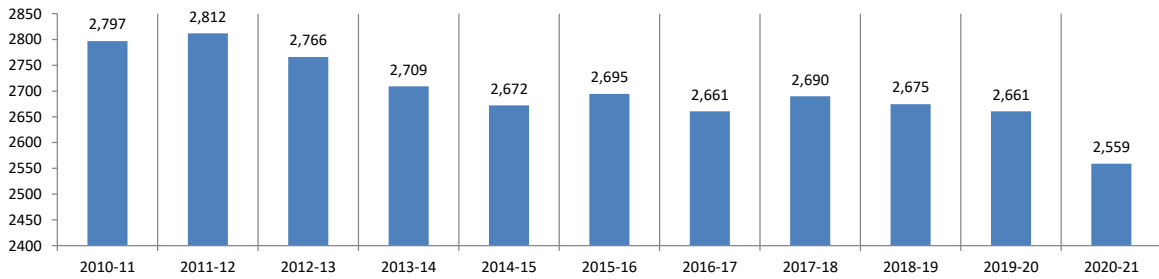
**Fall Enrollment And End-of-Year ADM by Grade for 2020-21**



**Total K-12 Fall Seat Count from the Gender Ethnicity by Grade by District File of the MDE**



**Total K-12 Adjusted Average Daily Membership K-12 by Year**



**Fall Seat Count and EOY ADM for 2010-11 through 2020-21**

