

April 2015

Derby Public Schools

Performance Dashboard

Derby High School

Martin Pascal, Principal

“People without information cannot act. People with information cannot help but act.”

Ken Blanchard

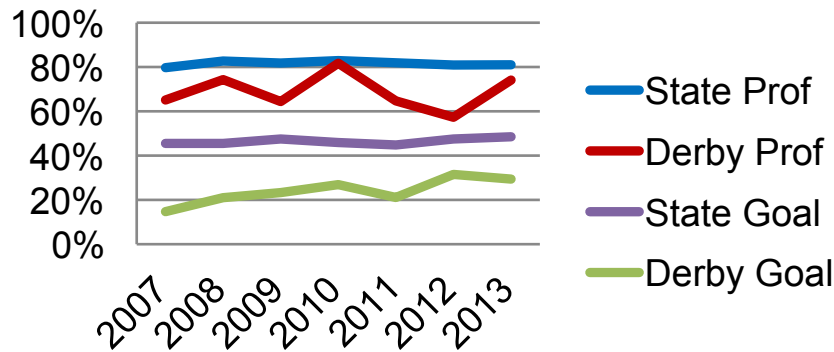


Annual Data

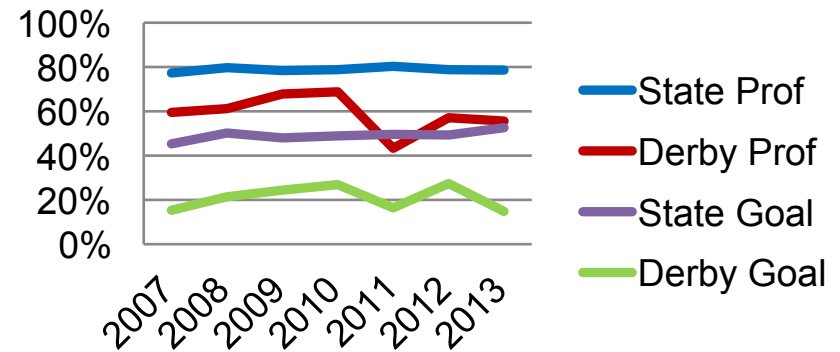
Connecticut Academic Performance Test (CAPT) Performance

Percent of 10th Graders Scoring Proficient/Goal (successive cohort compared to Connecticut average):

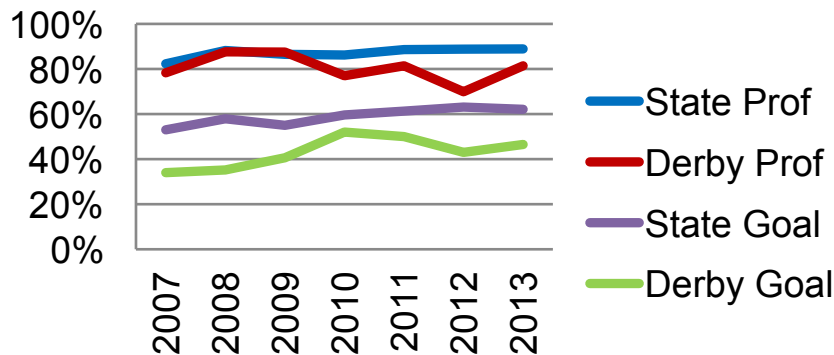
Reading



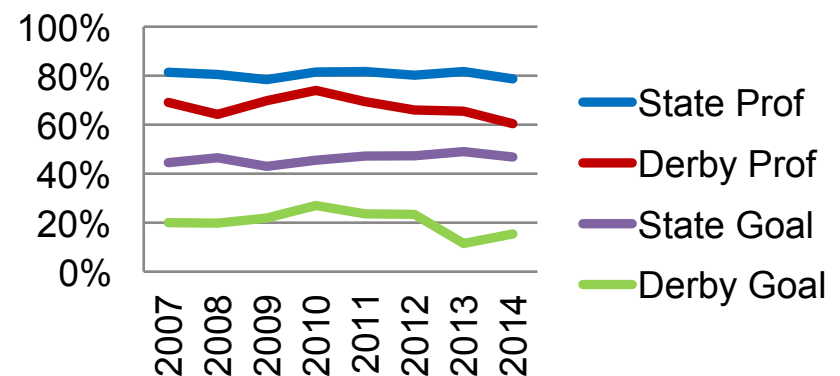
Mathematics



Writing



Science



Promotion:

Percent of students promoted

| | 9 | 10 | 11 |
|-------------------|-----|-----|-----|
| June, 2014 | 93% | 91% | 97% |
| June, 2013 | 88% | 86% | 97% |
| June, 2012 | 89% | 98% | 98% |
| June, 2011 | 86% | 84% | 94% |
| June, 2010 | 74% | 93% | 97% |
| June, 2009 | 76% | 87% | 90% |

Dropout:

| <u>Year</u> | <u>Annual Dropout Rate</u> |
|-------------|----------------------------|
| 2013 | 3.6% |
| 2012 | 4.5% |
| 2011 | 7.2% |
| 2010 | 4.2% |

State Four-Year Adjusted Cohort Graduation Rates:

Adjusted Cohort are those students who started high school in the ninth grade for the first time and graduate in four years along with any students who enter on grade level at any point during the four year period. Student who transfer out are not included. Any student who discontinues schooling, leaves for a GED or ACD program, or tells the school they are transferring to another school, but never registers with that school are considered a Cohort Dropout, and would be included in the Non-Graduates Other column.

| <u>Year</u> | <u>Graduates 4-Year Rate</u> | <u>Non-Graduates Still Enrolled</u> | <u>Non-Graduates Other</u> |
|-------------|----------------------------------|---|--------------------------------|
| 2014 | 81.4% | 9.8% | 8.8% |
| 2013 | 68.6% | 17.4% | 14.0% |
| 2012 | 77.5% | 7.8% | 14.7% |
| 2011 | 71.3% | 12.3% | 16.4% |
| 2010 | 73.2% | 11.6% | 15.2% |

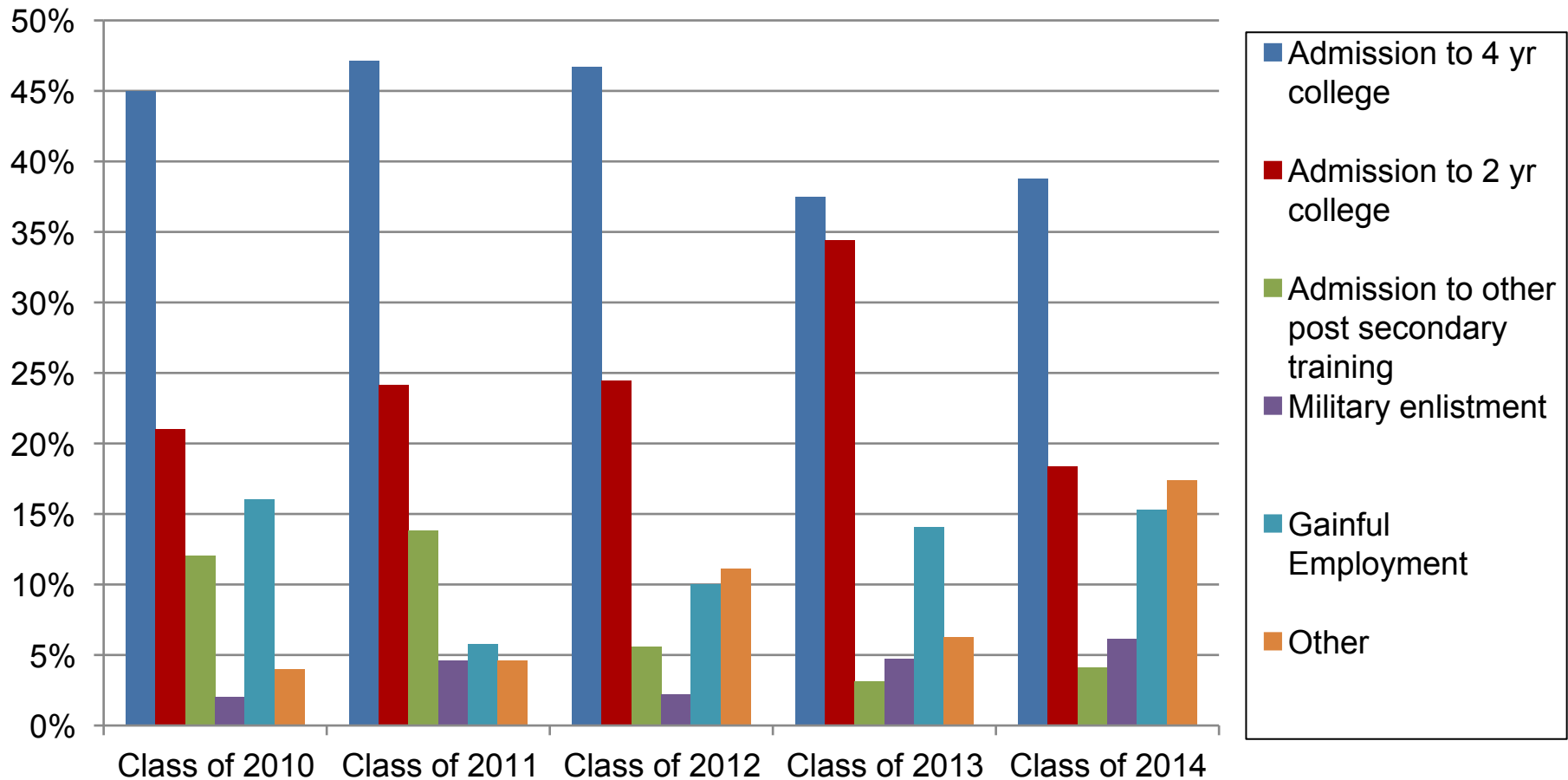
State Five-Year Adjusted Cohort Graduation Rates:

The methodology for this rate is the same as above but with a longer time period. This rate offers some students extra time to remain enrolled in school and graduate with a regular high school diploma.

| <u>Year</u> | <u>Graduates 5-Year Rate</u> | <u>Non-Graduates Still Enrolled</u> | <u>Non-Graduates Other</u> |
|-------------|----------------------------------|---|--------------------------------|
| 2012 | 81.6% | 0.9% | 17.4% |

Post High School Plans

Percent of graduates

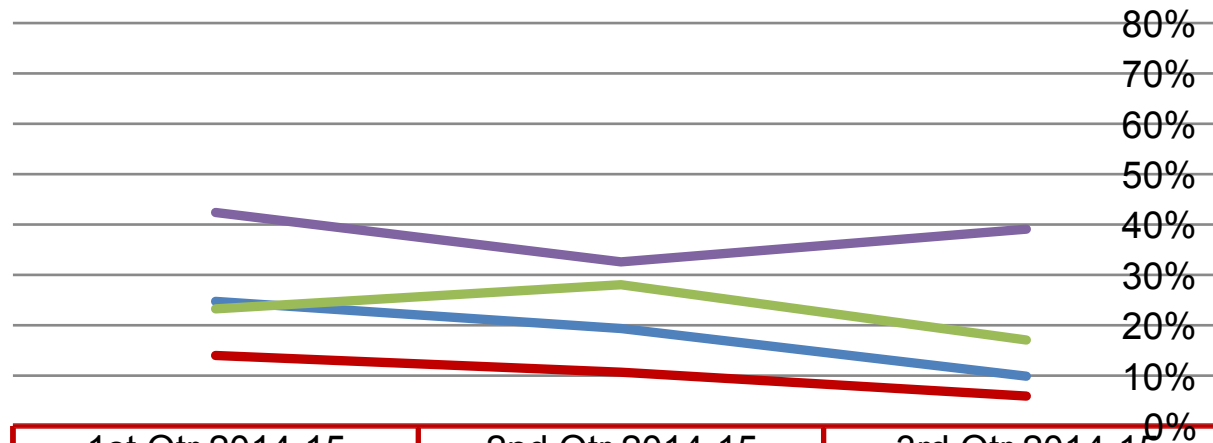


Information is updated in the fall following graduation

Quarterly Data

High Grades

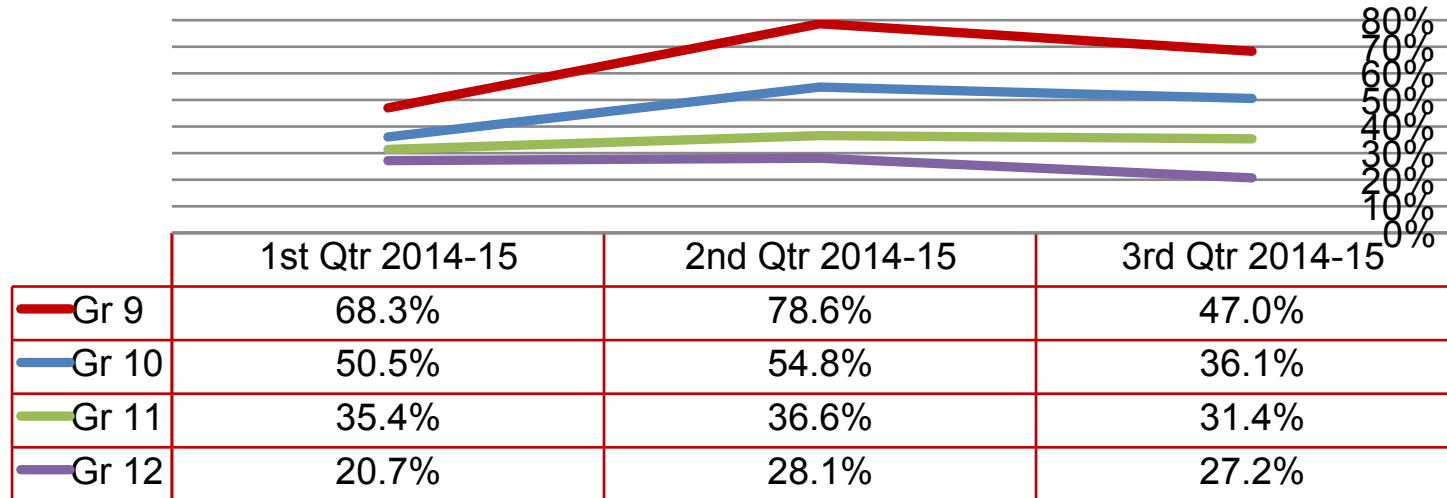
Percent of students earning 80% or above in all courses regardless of academic level:



| | 1st Qtr 2014-15 | 2nd Qtr 2014-15 | 3rd Qtr 2014-15 |
|-------|-----------------|-----------------|-----------------|
| Gr 9 | 5.9% | 10.7% | 14.0% |
| Gr 10 | 9.9% | 19.4% | 24.7% |
| Gr 11 | 17.1% | 28.0% | 23.3% |
| Gr 12 | 39.1% | 32.6% | 42.4% |

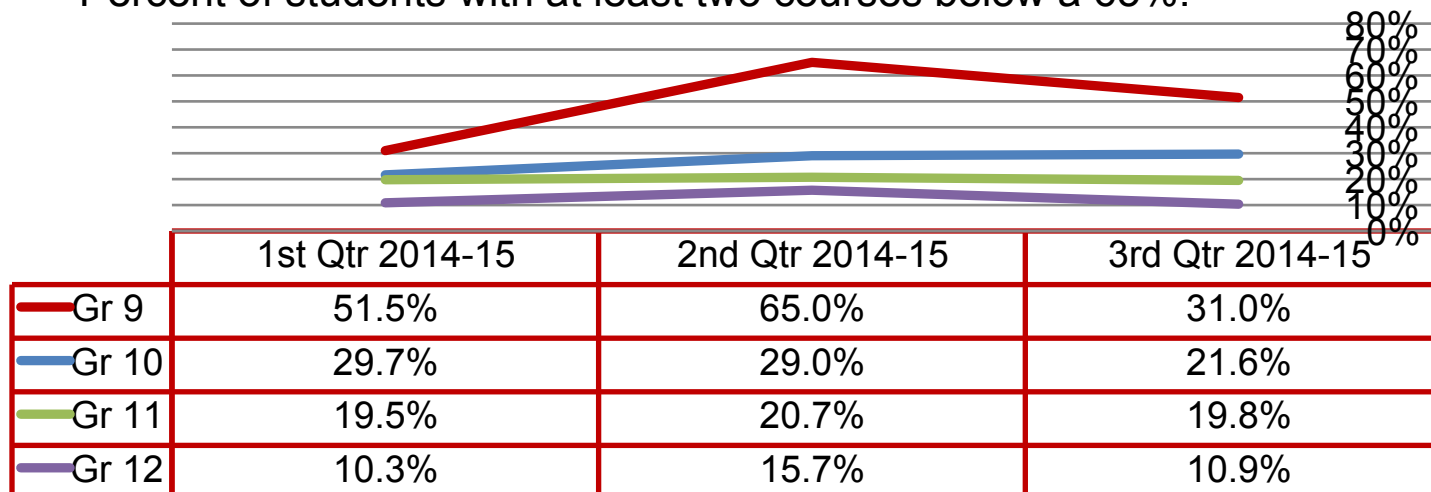
Failing Grades

Percent of students with at least one course below a 65%:



Failing Grades

Percent of students with at least two courses below a 65%:



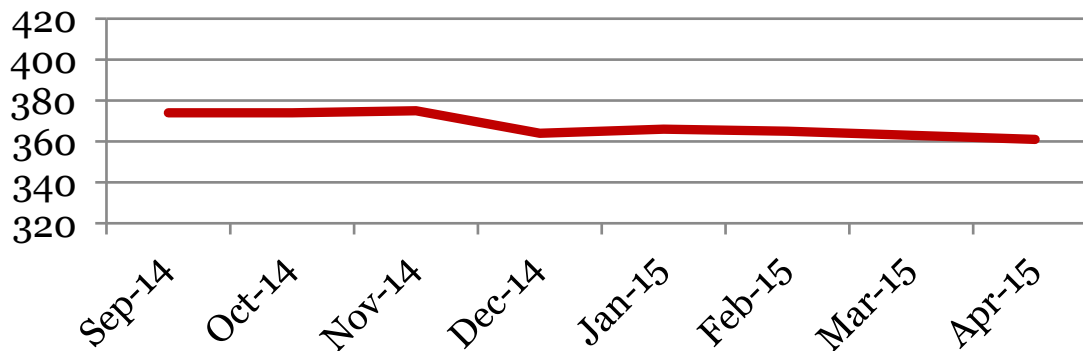
Monthly Data

Derby High School

Enrollment – 1st of the month

| | 9 | 10 | 11 | 12 | Total |
|---------------|-----|----|----|-----|------------|
| Apr-15 | 101 | 91 | 82 | 87 | 361 |
| Mar-15 | 102 | 91 | 83 | 87 | 363 |
| Feb-15 | 102 | 93 | 83 | 87 | 365 |
| Jan-15 | 100 | 92 | 84 | 90 | 366 |
| Dec-14 | 99 | 92 | 83 | 90 | 364 |
| Nov-14 | 100 | 97 | 86 | 92 | 375 |
| Oct-14 | 98 | 97 | 87 | 92 | 374 |
| Sep-14 | 97 | 99 | 85 | 93 | 374 |
| Apr-14 | 101 | 99 | 85 | 102 | 387 |

Total School Enrollment

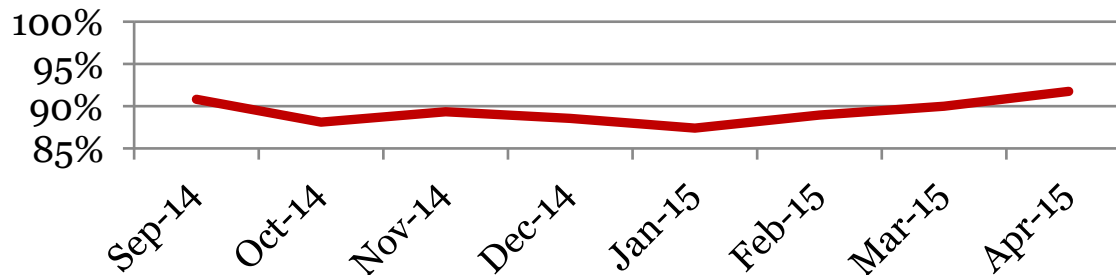


Attendance – Students

Average daily percent present:

| | 9 | 10 | 11 | 12 | Total |
|---------------|----------|-----------|-----------|-----------|--------------|
| Apr-15 | 90 | 93 | 91 | 93 | 92 |
| Mar-15 | 89 | 92 | 90 | 90 | 90 |
| Feb-15 | 88 | 91 | 87 | 90 | 89 |
| Jan-15 | 89 | 89 | 84 | 87 | 87 |
| Dec-14 | 89 | 90 | 87 | 87 | 89 |
| Nov-14 | 92 | 91 | 85 | 89 | 89 |
| Oct-14 | 90 | 87 | 84 | 90 | 88 |
| Sep-14 | 91 | 91 | 89 | 91 | 91 |
| Apr-14 | 91 | 87 | 89 | 89 | 89 |

Total Student Attendance



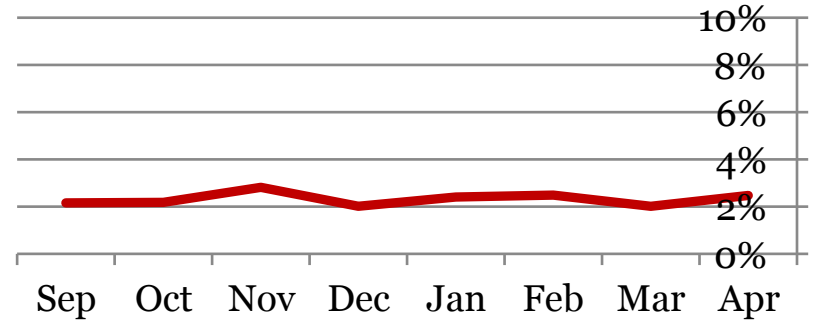
Tardies

Average daily percent tardy:

Derby High School

| | 9 | 10 | 11 | 12 | Total |
|--------|---|----|----|----|-------|
| Apr-15 | 2 | 2 | 3 | 2 | 2 |
| Mar-15 | 2 | 2 | 2 | 2 | 2 |
| Feb-15 | 2 | 2 | 3 | 3 | 2 |
| Jan-15 | 2 | 3 | 3 | 2 | 2 |
| Dec-14 | 1 | 2 | 2 | 2 | 2 |
| Nov-14 | 3 | 3 | 2 | 3 | 3 |
| Oct-14 | 2 | 2 | 3 | 2 | 2 |
| Sep-14 | 1 | 2 | 3 | 2 | 2 |
| Apr-14 | 2 | 2 | 2 | 3 | 2 |

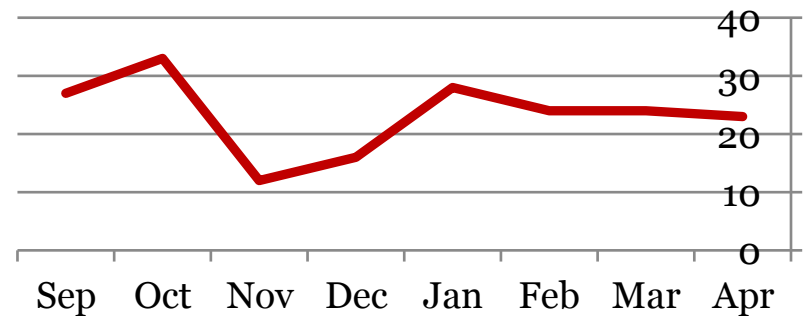
Total Student Tardies



Number of students tardy 5 or more days:

| | 9 | 10 | 11 | 12 | Total |
|--------|---|----|----|----|-------|
| Apr-15 | 4 | 10 | 6 | 3 | 23 |
| Mar-15 | 9 | 8 | 3 | 4 | 24 |
| Feb-15 | 6 | 8 | 4 | 6 | 24 |
| Jan-15 | 6 | 8 | 10 | 4 | 28 |
| Dec-14 | 3 | 5 | 5 | 3 | 16 |
| Nov-14 | 2 | 4 | 3 | 3 | 12 |
| Oct-14 | 4 | 11 | 6 | 12 | 33 |
| Sep-14 | 2 | 11 | 8 | 6 | 27 |
| Apr-14 | 1 | 4 | 5 | 6 | 16 |

Students over Threshold

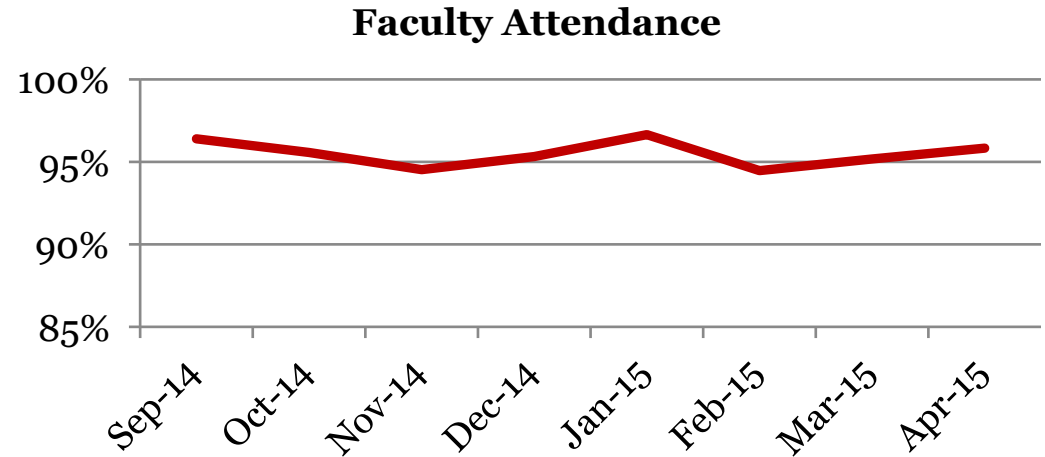


Attendance – Faculty

Average daily percent present:

Derby High School

| | Total |
|---------------|--------------|
| Apr-15 | 96 |
| Mar-15 | 95 |
| Feb-15 | 94 |
| Jan-15 | 97 |
| Dec-14 | 95 |
| Nov-14 | 95 |
| Oct-14 | 96 |
| Sep-14 | 96 |
| Apr-14 | 94 |



**This indicator reflects certified staff and does not include absences created by class trips, professional development, workman's comp and FMLA. However % may be reduced due to long term illness beyond FMLA.*

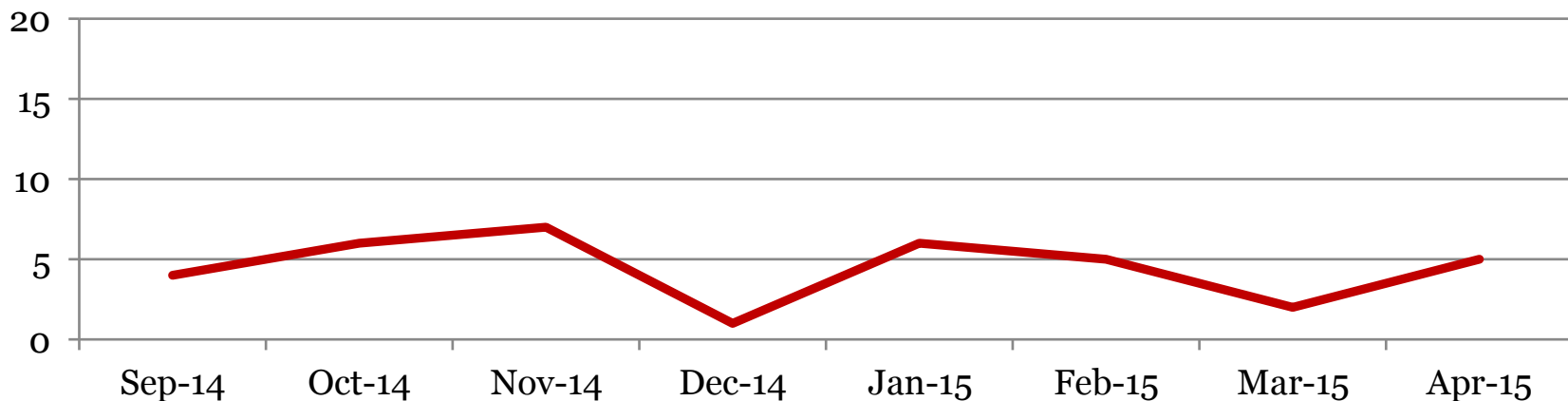
Suspensions – Out of School

Derby High School

Number of student suspensions (total days of suspension):

| | 9 | | 10 | | 11 | | 12 | | Total | |
|---------------|----------|------|-----------|------|-----------|------|-----------|------|--------------|-------------|
| Apr-15 | 1 | (5) | 0 | (0) | 1 | (2) | 3 | (23) | 5 | (30) |
| Mar-15 | 0 | (0) | 0 | (0) | 0 | (0) | 2 | (5) | 2 | (5) |
| Feb-15 | 2 | (20) | 0 | (0) | 3 | (13) | 0 | (0) | 5 | (33) |
| Jan-15 | 2 | (14) | 1 | (10) | 3 | (23) | 0 | (0) | 6 | (47) |
| Dec-14 | 1 | (10) | 0 | (0) | 0 | (0) | 0 | (0) | 1 | (10) |
| Nov-14 | 0 | (0) | 3 | (10) | 2 | (8) | 2 | (10) | 7 | (28) |
| Oct-14 | 3 | (17) | 3 | (15) | 0 | (0) | 0 | (0) | 6 | (32) |
| Sep-14 | 0 | (0) | 1 | (7) | 3 | (3) | 0 | (0) | 4 | (10) |
| Apr-14 | 1 | (3) | 1 | (5) | 0 | (0) | 3 | (6) | 5 | (14) |

Total Out of School Suspensions

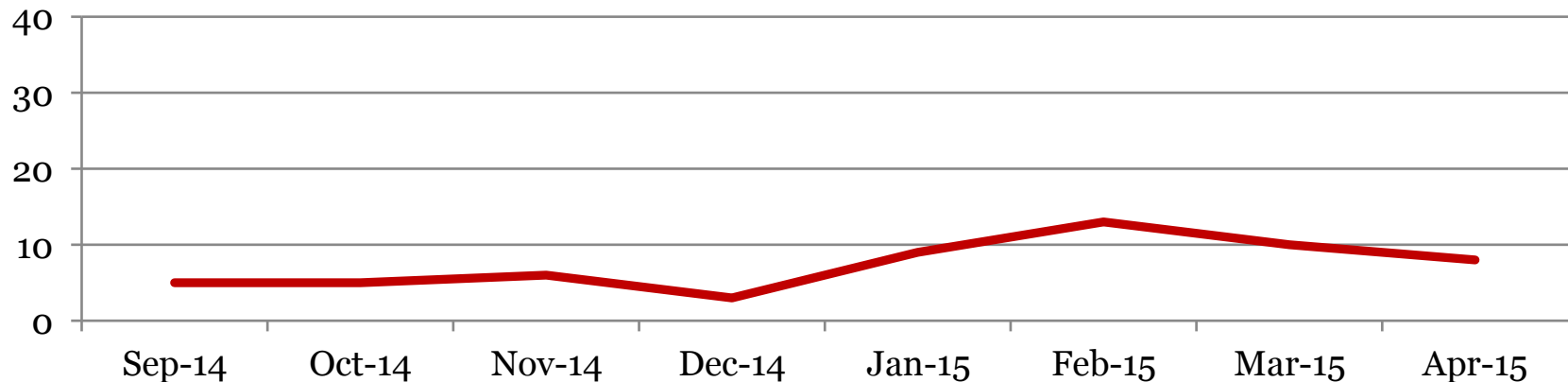


Suspensions – In School

Number of student suspensions (total days of suspension):

| | 9 | | 10 | | 11 | | 12 | | Total | |
|---------------|----------|-----|-----------|-----|-----------|-----|-----------|-----|--------------|-------------|
| Apr-15 | 3 | (4) | 1 | (1) | 1 | (1) | 3 | (4) | 8 | (10) |
| Mar-15 | 5 | (5) | 3 | (3) | 0 | (0) | 2 | (2) | 10 | (10) |
| Feb-15 | 7 | (7) | 2 | (2) | 3 | (4) | 1 | (1) | 13 | (14) |
| Jan-15 | 2 | (2) | 1 | (1) | 4 | (6) | 2 | (3) | 9 | (12) |
| Dec-14 | 0 | (0) | 0 | (0) | 3 | (3) | 0 | (0) | 3 | (3) |
| Nov-14 | 2 | (2) | 1 | (1) | 1 | (1) | 2 | (2) | 6 | (6) |
| Oct-14 | 1 | (1) | 1 | (1) | 1 | (2) | 2 | (3) | 5 | (7) |
| Sep-14 | 0 | (0) | 0 | (0) | 4 | (6) | 1 | (2) | 5 | (8) |
| Apr-14 | 1 | (1) | 3 | (4) | 0 | (0) | 1 | (1) | 5 | (6) |

Total In School Suspensions



Newly Enrolled Students

| | 9 | 10 | 11 | 12 | Total |
|------------------|----------|-----------|-----------|-----------|--------------|
| Apr-15 | 1 | 0 | 0 | 0 | 1 |
| Mar-15 | 1 | 2 | 0 | 0 | 3 |
| Feb-15 | 2 | 0 | 0 | 0 | 2 |
| Jan-15 | 3 | 2 | 1 | 0 | 6 |
| Dec-14 | 1 | 1 | 0 | 0 | 2 |
| Nov-14 | 0 | 0 | 0 | 0 | 0 |
| Oct-14 | 2 | 0 | 1 | 0 | 3 |
| Sep-14 | 4 | 2 | 3 | 0 | 9 |
| Summer-14 | 7 | 6 | 3 | 1 | 17 |
| Apr-14 | 0 | 0 | 0 | 0 | 0 |

Departing Students

Students who have left the school during the month for any reason:

| | 9 | 10 | 11 | 12 | Total |
|------------------|----------|-----------|-----------|-----------|--------------|
| Apr-15 | 0 | 0 | 0 | 0 | 0 |
| Mar-15 | 2 | 2 | 1 | 0 | 5 |
| Feb-15 | 2 | 2 | 0 | 0 | 4 |
| Jan-15 | 1 | 1 | 2 | 1 | 5 |
| Dec-14 | 0 | 0 | 0 | 0 | 0 |
| Nov-14 | 1 | 1 | 2 | 2 | 6 |
| Oct-14 | 1 | 0 | 2 | 0 | 3 |
| Sep-14 | 3 | 2 | 1 | 0 | 6 |
| Summer-14 | 10 | 7 | 4 | 1 | 22 |
| Apr-14 | 0 | 0 | 0 | 0 | 0 |

Dropouts

Student who discontinue schooling, leave for a GED program/Job Corp, or are disenrolled by grade level.

| | 9 | 10 | 11 | 12 | Total |
|------------------|----------|-----------|-----------|-----------|--------------|
| Apr-15 | 0 | 0 | 0 | 0 | 0 |
| Mar-15 | 0 | 1 | 0 | 0 | 1 |
| Feb-15 | 0 | 1 | 0 | 0 | 1 |
| Jan-15 | 0 | 0 | 2 | 0 | 2 |
| Dec-14 | 0 | 0 | 0 | 0 | 0 |
| Nov-14 | 0 | 0 | 2 | 1 | 3 |
| Oct-14 | 0 | 0 | 0 | 0 | 0 |
| Sep-14 | 0 | 0 | 0 | 0 | 0 |
| Summer-14 | 0 | 0 | 0 | 1 | 1 |
| Totals | 0 | 2 | 4 | 2 | 8 |

Projected Cohort Rate Percentage:

| | <u>Class of 2018</u> | | | <u>Class of 2017</u> | | | <u>Class of 2016</u> | | | <u>Class of 2015</u> | | |
|---------------|----------------------|--------|------|----------------------|--------|------|----------------------|--------|------|----------------------|--------|------|
| | Grad | Retain | Drop | Grad | Retain | Drop | Grad | Retain | Drop | Grad | Retain | Drop |
| Apr-15 | 100 | 0 | 0 | 87.64 | 12.36 | 0 | 83.91 | 12.64 | 3.45 | 80.61 | 11.22 | 8.16 |
| Mar-15 | 100 | 0 | 0 | 87.64 | 12.36 | 0 | 83.91 | 12.64 | 3.45 | 80.61 | 11.22 | 8.16 |
| Feb-15 | 100 | 0 | 0 | 86.67 | 13.33 | 0 | 83.91 | 12.64 | 3.45 | 80.61 | 11.22 | 8.16 |
| Jan-15 | 100 | 0 | 0 | 86.67 | 13.33 | 0 | 82.95 | 14.77 | 2.27 | 80.20 | 12.87 | 6.93 |
| Dec-14 | 100 | 0 | 0 | 85.56 | 14.44 | 0 | 83.72 | 15.12 | 1.16 | 80.20 | 13.86 | 5.94 |
| Nov-14 | 100 | 0 | 0 | 85.39 | 14.61 | 0 | 80.00 | 18.89 | 1.11 | 79.61 | 14.56 | 5.83 |
| Oct-14 | 100 | 0 | 0 | 85.39 | 14.61 | 0 | 79.12 | 19.78 | 1.10 | 79.81 | 15.38 | 4.81 |
| Sep-14 | 100 | 0 | 0 | 87.5 | 12.50 | 0 | 79.12 | 19.78 | 1.10 | 79.81 | 15.38 | 4.81 |

Projected rates can be affected by several factors including but not limited to student transfers, mid-year grade level changes or updated exit codes.