

Judson Independent School District

School Consolidation

Saturday, February 21, 2026
Judson ISD Special Board Meeting

Overview

- Board Action - 3 Elementary Schools
- Growth and Planning Recommendations
- Campuses Reviewed for Consolidation
 - Ed Franz Leadership Academy
 - Miller's Point Elementary School
 - Park Village Blended Learning Academy
 - Rolling Meadows Elementary School
 - Spring Meadows College Preparatory /
Spring Meadows Elementary School
- Data Review and Considerations
- Superintendent Recommendation



Current Enrollment

Campus	Max Capacity	Enrollment	ESL/Bilingual	SOC	OOD	Living in Zone	Total Utilization	Utilization by Zone
Rolling Meadows Elementary	968	397	0	72	38	287	41.01%	29.65%
Ed Franz Leadership Academy	704	329	0	78	29	222	46.73%	31.53%
Park Village Blended Learning Academy	990	340	0	46	20	274	34.34%	27.68%
Miller's Point Elementary	902	486	0	38	33	415	53.88%	46.01%
Spring Meadows College Preparatory / Spring Meadows Elementary	924	579	99	70	10	400	62.66%	43.29%

Future Enrollment

Campus	2026	2027	2028	2029	2030	5 Year Variance
Rolling Meadows Elementary	397	384	377	395	396	-1
Ed Franz Leadership Academy	329	313	309	300	280	-49
Park Village Blended Learning Academy	340	337	313	298	281	-59
Millers Point Elementary	486	461	429	403	399	-87
Spring Meadows College Preparatory / Spring Meadows Elementary	579	533	511	492	491	-88

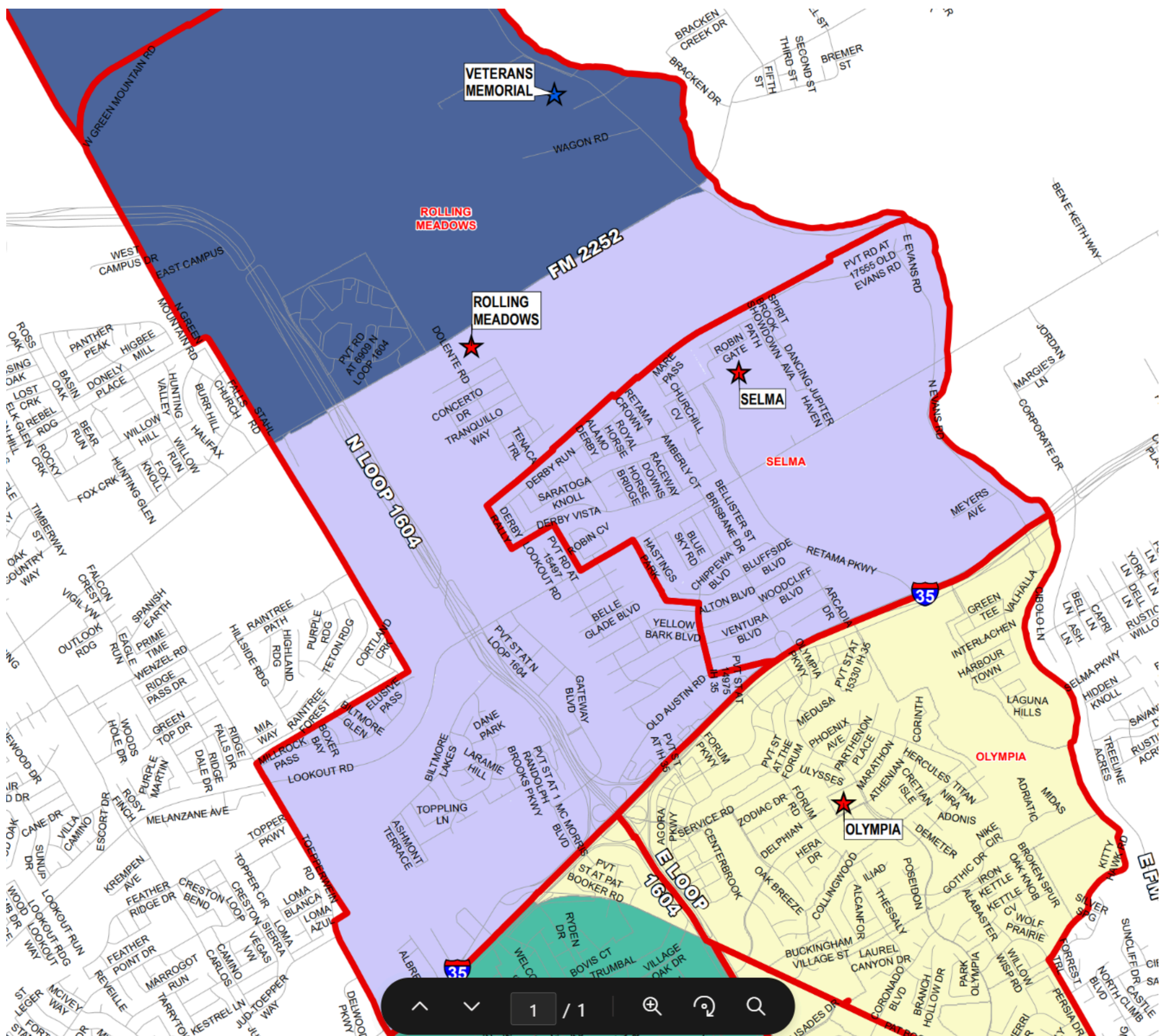
Travel and Distance

Campuses	Bus Riders	% walkers or car riders	Distance to Feeder School - 1	Distance to Feeder School - 2	Distance to Feeder School - 3
Rolling Meadows Elementary	102	74%	4 miles	5 miles	6 miles
Ed Franz Leadership Academy	36	89%	0.9 miles	1.9 Miles	5 miles
Park Village Blended Learning Academy	71	79%	0.7 Miles	2.1 Miles	2 miles
Millers Point Elementary	189	61%	2 miles	3 miles	5 miles
Spring Meadows College Preparatory / Spring Meadows Elementary	110	81%	2 miles	3 miles	5 miles

Campus Capacities Post Consolidation

Rolling Meadows Elementary

Receiving Campus	Campus Capacity	Current Enrollment	Current Utilization	Projected Enrollment Post Consolidation	Projected Utilization Post Consolidation	2029 Campus Utilization without Consolidation
Selma Elementary	924	471	50.97%	767	83.01%	51.40%



VETERANS MEMORIAL

ROLLING MEADOWS

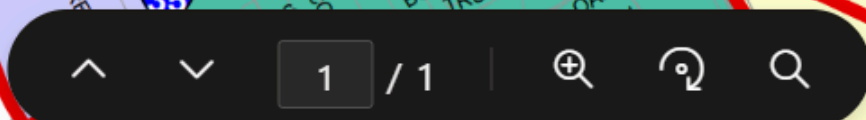
ROLLING MEADOWS

SELMA

SELMA

OLYMPIA

OLYMPIA



Data Considerations - Facilities

Rolling Meadows Elementary

Facility

- Built 2009
- No Renovations - Planned 2022 Bond
- 5% Repairs estimated - Future Bond Projects
- Commercial Location, Limited Growth

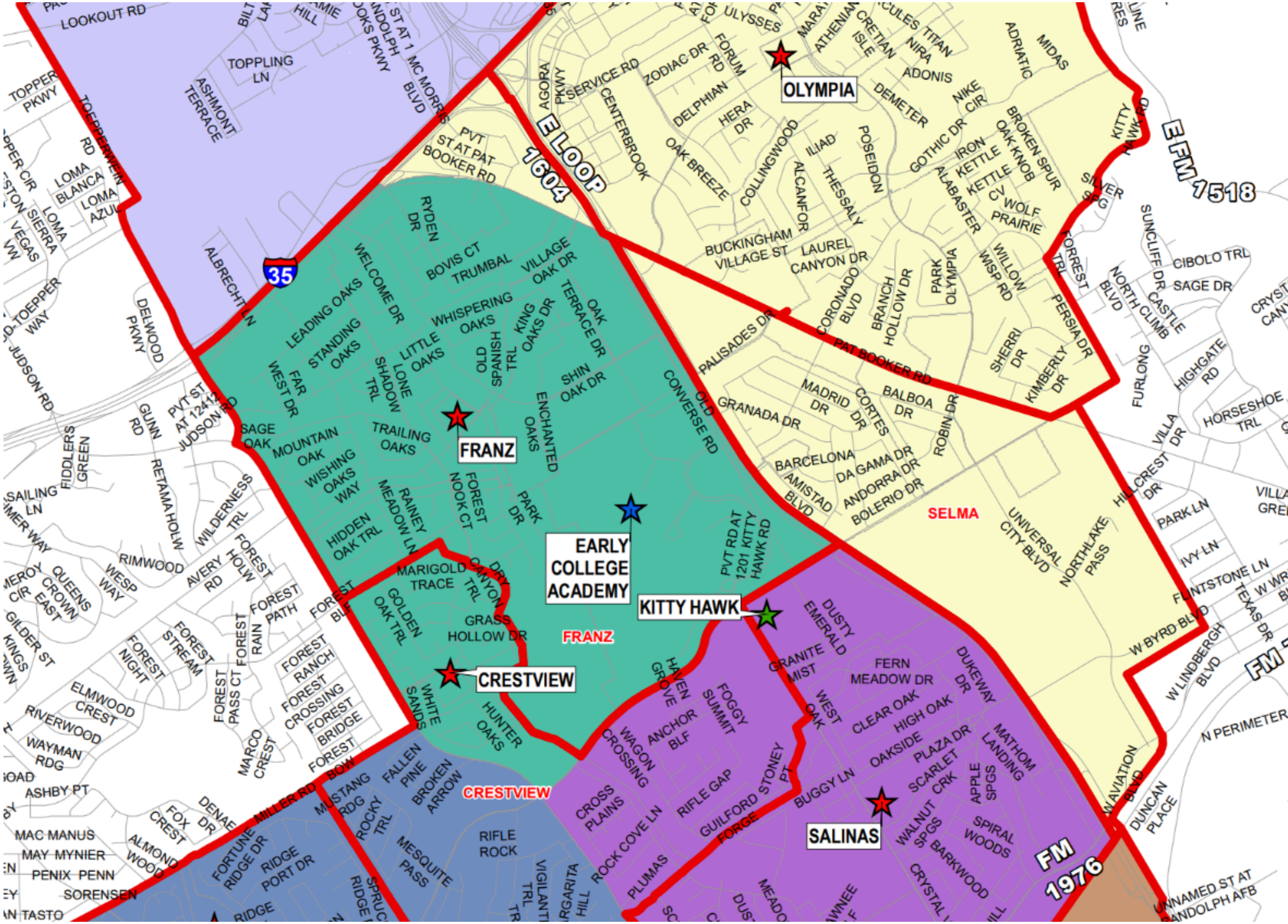
Facility Cost

- Annual Utility Cost - \$166,000
- Cost per enrolled - \$418.14
- Cost per Zoned - \$578.40
- MEP and Civil - \$1,907,274 - Priority 1



Campus Capacities Post Consolidation Ed Franz Leadership Academy

Receiving Campus	Campus Capacity	Current Enrollment	Current Utilization	Projected Enrollment Post Consolidation	Projected Utilization Post Consolidation	2029 Campus Utilization without Consolidation
The Fine Arts Academy at Olympia	792	435	54.92%	519	65.53%	46.59%
Crestview Elementary	880	535	60.80%	620	70.45%	45.68%



OLYMPIA

FRANZ

EARLY COLLEGE ACADEMY

KITTY HAWK

CRESTVIEW

SALINAS



E LOOP 1604

FM 17518

FM 1976

SELMA

FM 17518

FM 1976

UNNAMED ST AT RANDOLPH AFB

Data Considerations - Facilities

Ed Franz Leadership Academy



Facility

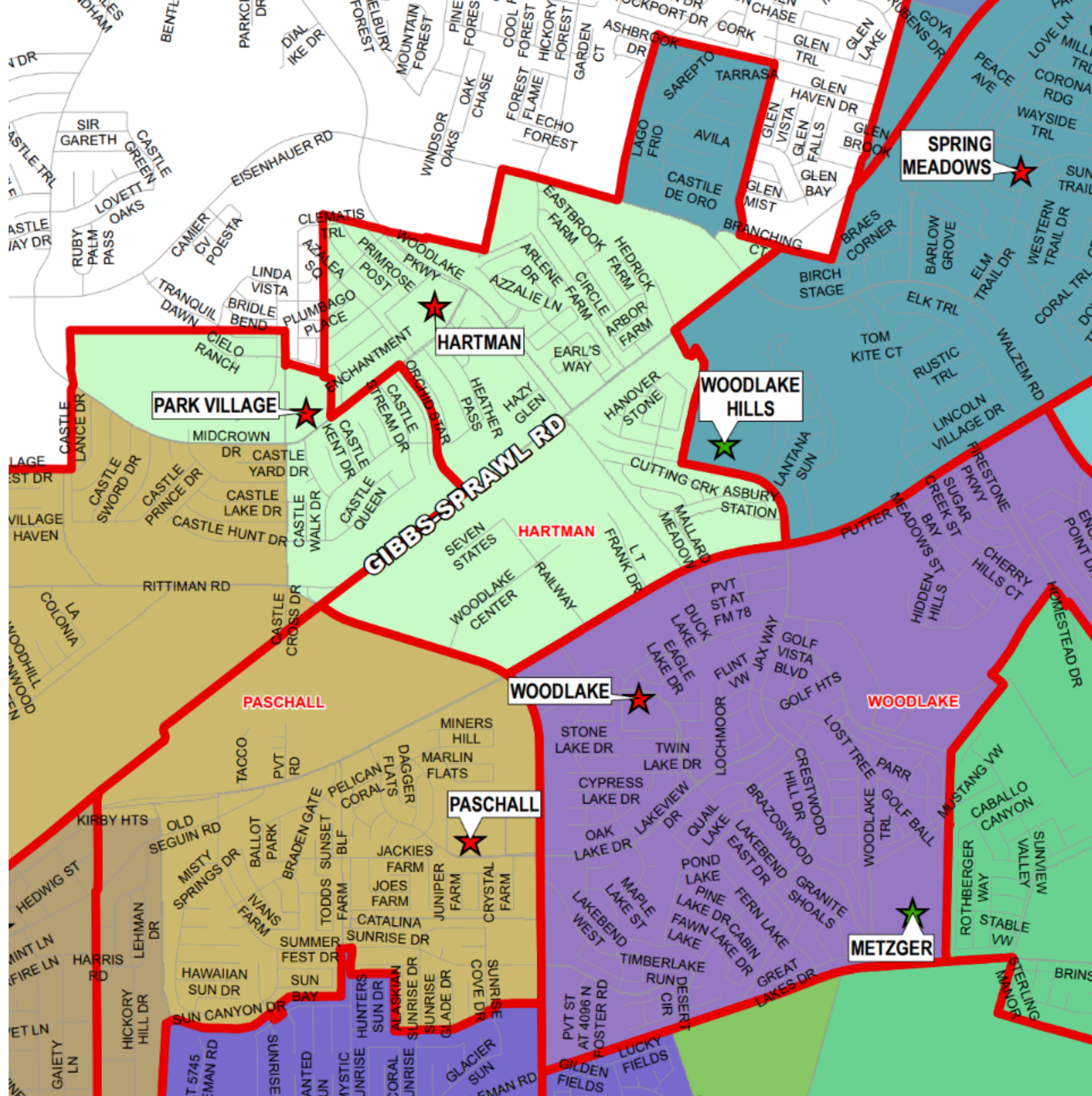
- Built 1969
- Renovations 2008/2022
- 30% Repairs Estimated - Future Bond Projects
- Residential, Enrollment

Facility Cost

- Annual Utility Cost - \$99,000
- Cost per enrolled - \$300.91
- Cost per Zoned - \$445.95
- MEP, Architect, Civil - \$8,889,750 - Priority 1

Campus Capacities Post Consolidation Park Village Blended Learning Academy

Receiving Campus	Campus Capacity	Current Enrollment	Current Utilization	Projected Enrollment Post Consolidation	Projected Utilization Post Consolidation	2029 Campus Utilization without Consolidation
Hartman Elementary	1012	606	59.88%	744	73.52%	49.60%
Paschall Elementary	1144	659	57.60%	728	63.64%	47.29%



Data Considerations - Facilities

Park Village Blended Learning Academy

Facility

- Built 1978, Rebuilt 1999
- Renovations 2022
- 27% Repairs Estimated - Future Bond Projects
- Residential, Enrollment, Proximity to MHE

Facility Cost

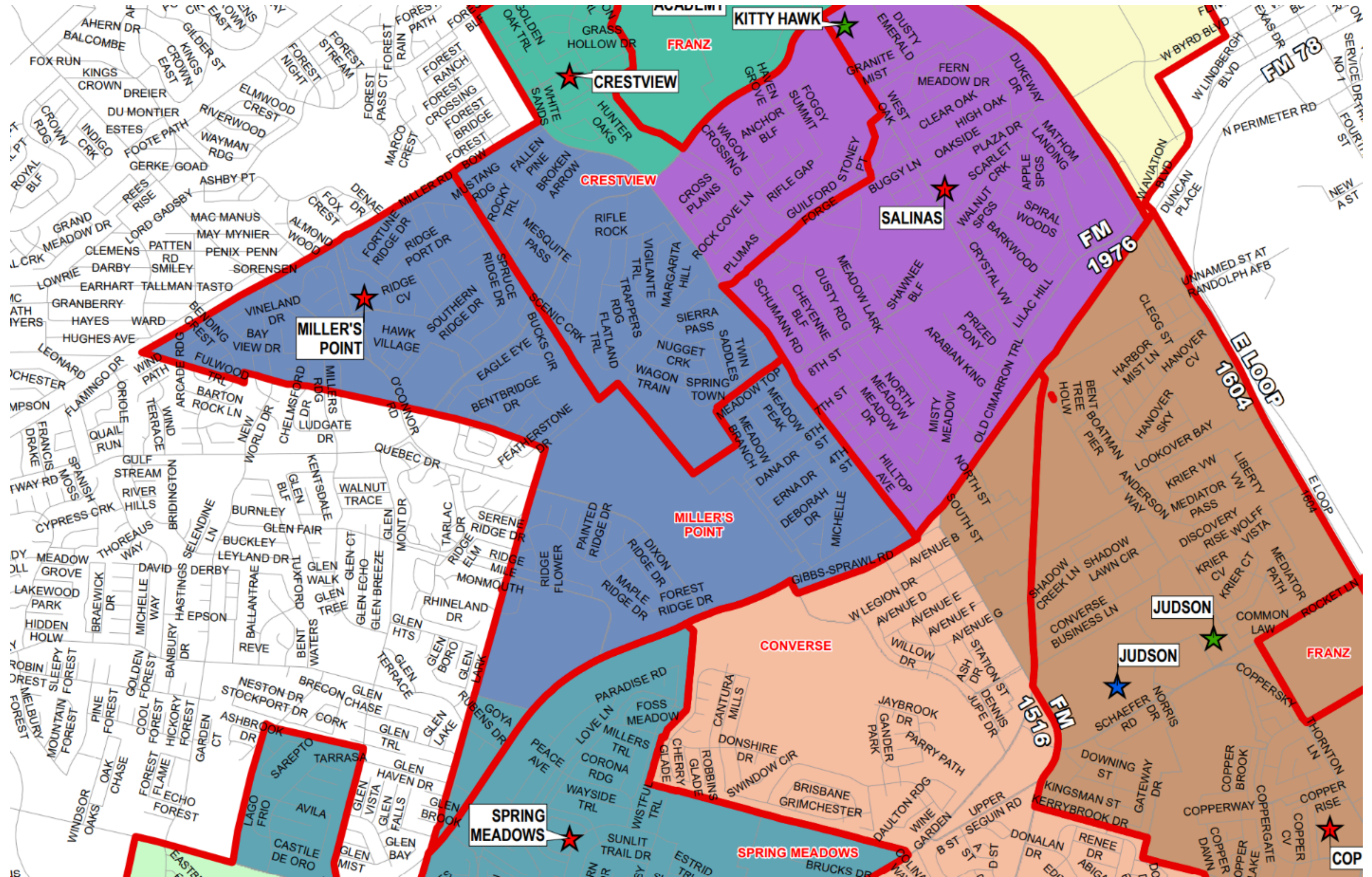
- Annual Utility Cost - \$117,000
- Cost per enrolled - \$344.12
- Cost per Zoned - \$427.01
- MEP and Civil - \$7,667,632 - Priority 1



Campus Capacities Post Consolidation

Miller's Point Elementary

Receiving Campus	Campus Capacity	Current Enrollment	Current Utilization	Projected Enrollment Post Consolidation	Projected Utilization Post Consolidation	2029 Campus Utilization without Consolidation
Crestview Elementary	880	535	60.80%	751	85.34%	45.68%
Salinas Elementary	880	587	66.70%	768	87.27%	47.27%



KITTY HAWK

FRANZ

CRESTVIEW

CRESTVIEW

SALINAS

FM 1976

MILLER'S POINT

MILLER'S POINT

CONVERSE

SPRING MEADOWS

SPRING MEADOWS

JUDSON

JUDSON

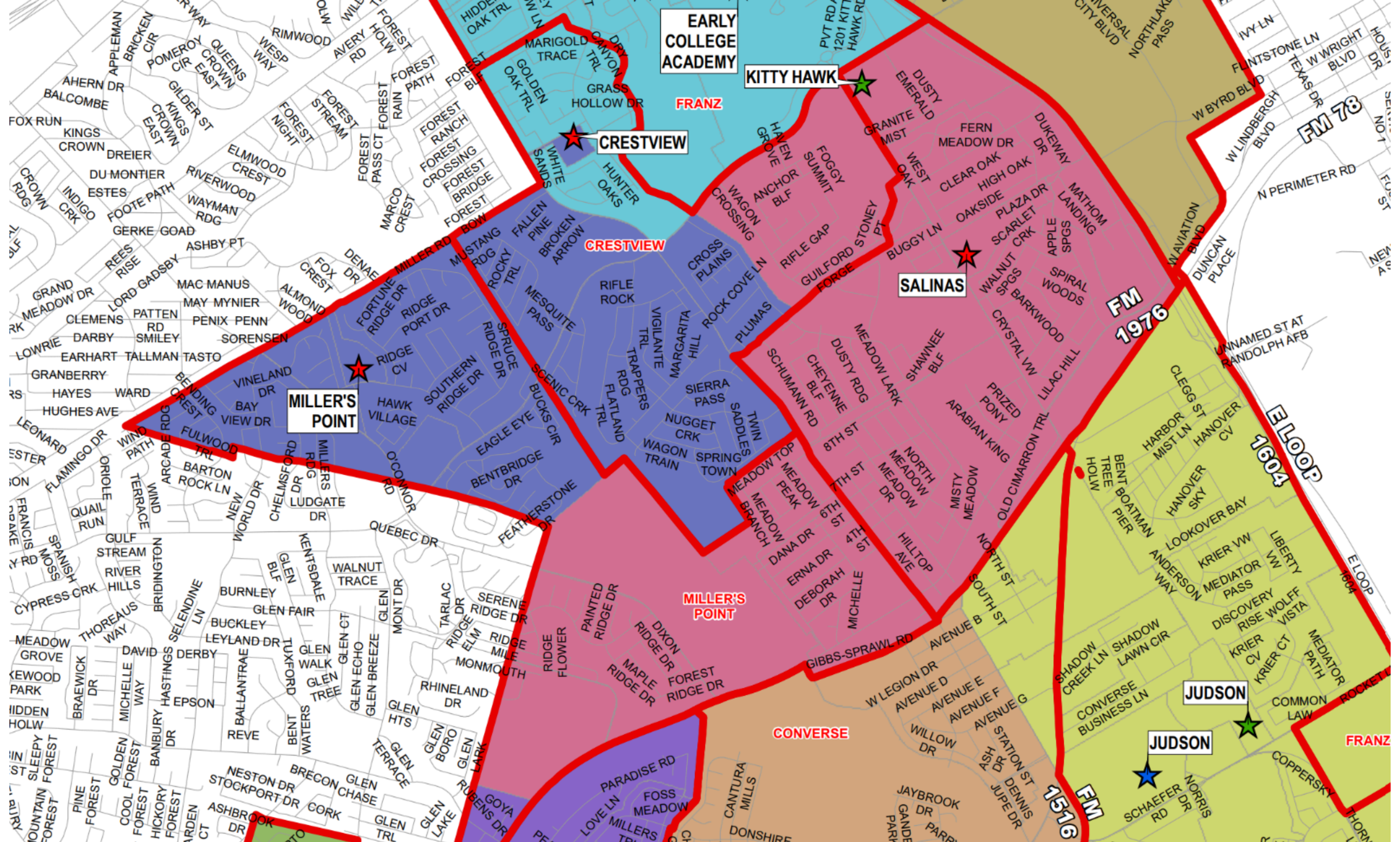
FRANZ

COP

FM 78

E LOOP 1604

FM 1516



EARLY COLLEGE ACADEMY

KITTY HAWK

CRESTVIEW

CRESTVIEW

MILLER'S POINT

MILLER'S POINT

SALINAS

FM 1976

E LOOP 1604

JUDSON

JUDSON

CONVERSE

FM 1516

FM 78

FRANZ

Data Considerations - Facilities

Miller's Point Elementary

Facility

- Built 1987
- Renovations 1991, 2009, 2010, 2024
- 13% Repairs Estimated - Future Bond Projects
- Campus Location

Facility Cost

- Annual Utility Cost - \$148,000
- Cost per enrolled - \$304.53
- Cost per Zoned - \$356.63
- MEP, Architect, & Civil - \$2,448,000 - Priority 1

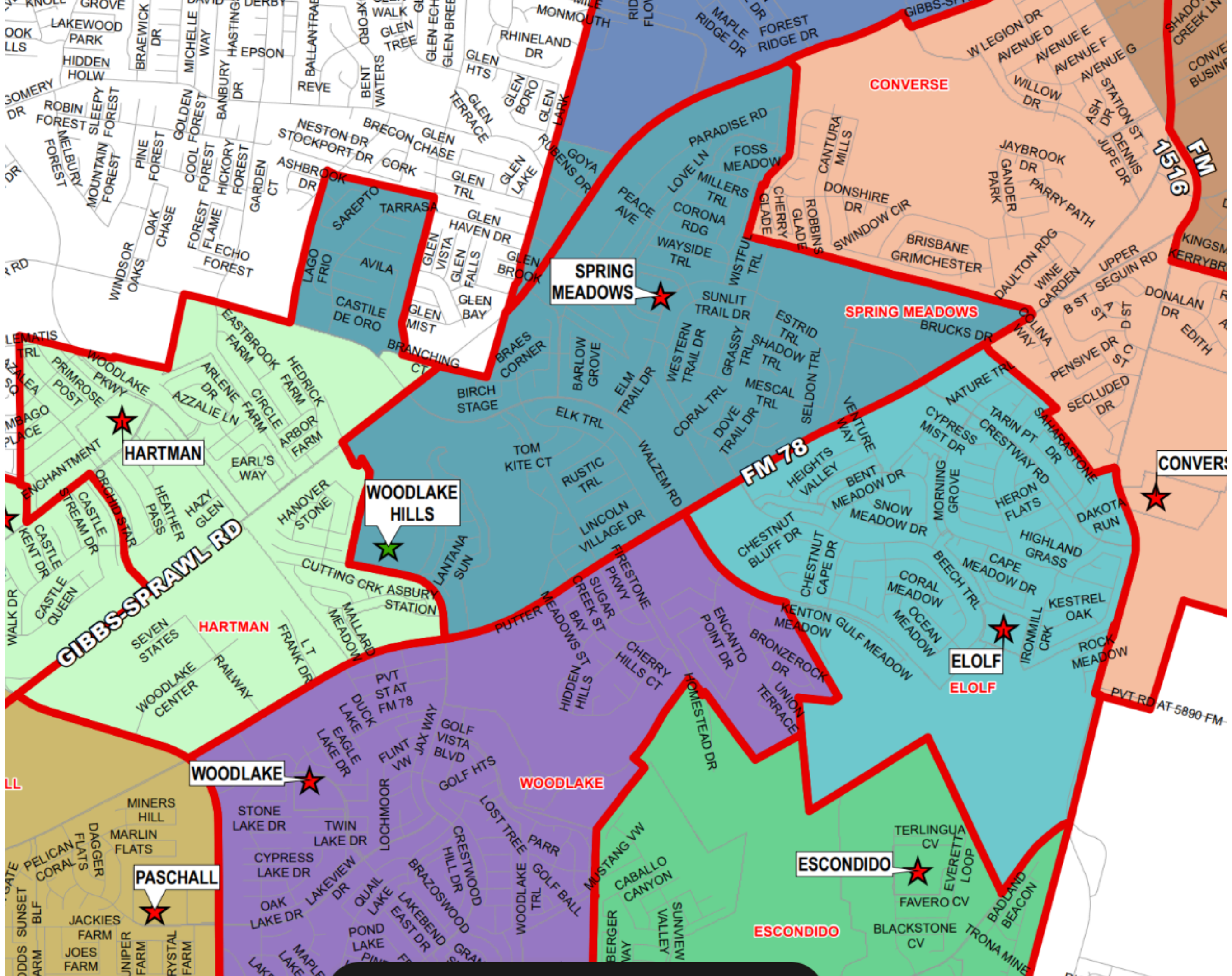


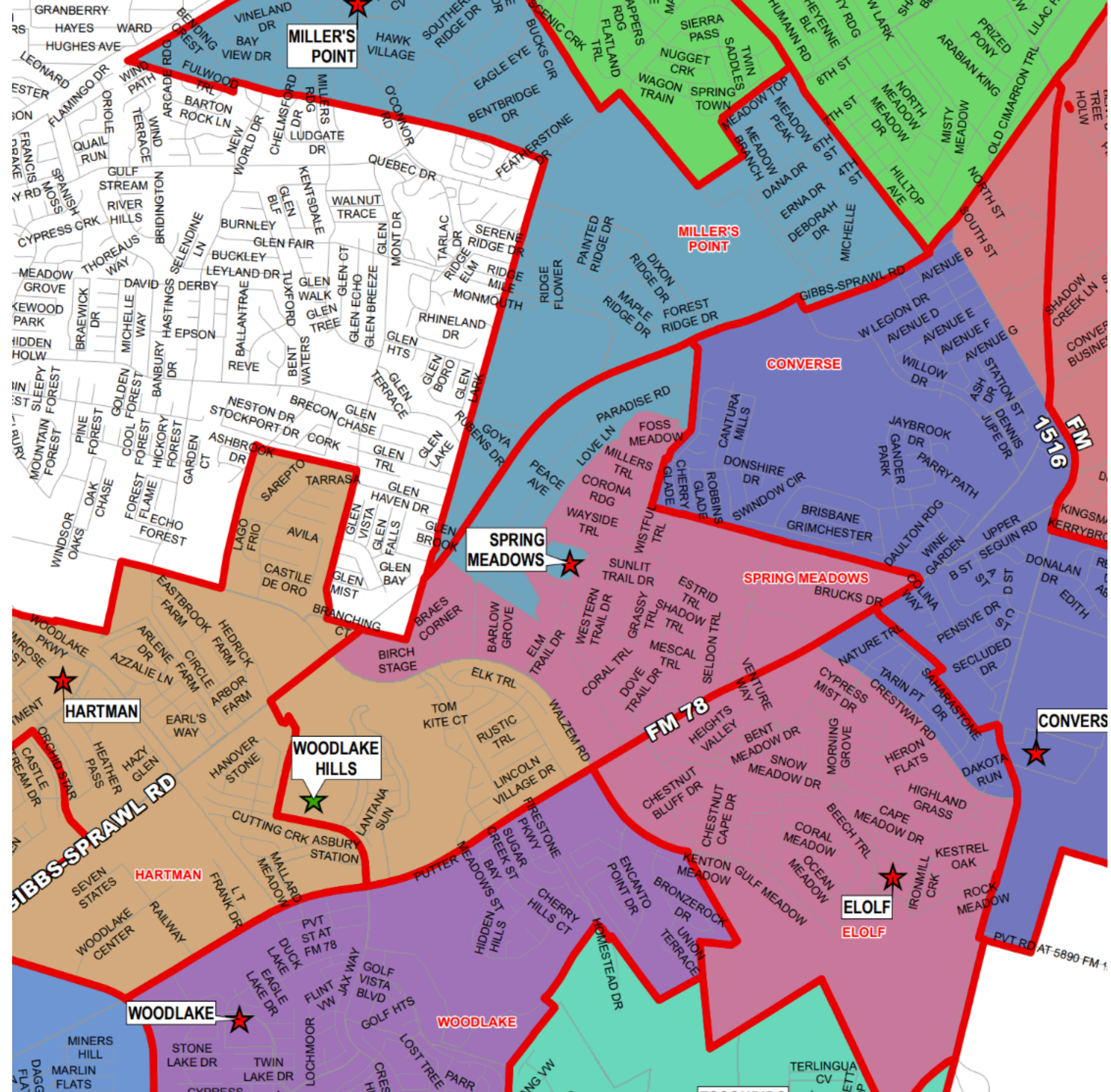
Campus Capacities Post Consolidation

Spring Meadows College Preparatory

Spring Meadows Elementary

Receiving Campus	Campus Capacity	Current Enrollment	Current Utilization	Projected Enrollment Post Consolidation	Projected Utilization Post Consolidation	2029 Campus Utilization without Consolidation
Elolf Steam Academy	880	651	73.98%	848	96.36%	68.64%
Miller's Point Elementary	902	486	53.88%	755	83.70%	44.24%
Hartman Elementary	1012	606	59.88%	870	85.97%	49.60%





MILLER'S POINT

MILLER'S POINT

CONVERSE

SPRING MEADOWS

SPRING MEADOWS

HARTMAN

WOODLAKE HILLS

FM 78

CONVERSE

WOODLAKE

WOODLAKE

ELOLF

GIBBS-SPRAWL RD

PVT RD AT 5890 FM 1

Data Considerations - Facilities

Spring Meadows College Preparatory/Spring Meadows Elementary



Facility

- Built 1984
- Renovations 2020, 2022
- 38% Repairs Estimated - Future Bond Projects
- Enrollment, Programs, Location

Facility Cost

- Annual Utility Cost - \$137,000
- Cost per enrolled - \$236.61
- Cost per Zoned - \$342.50
- MEP, Architect, & Civil - \$11,406,000 - Priority 1

Student Distribution

Capacity Analysis

	Current Utilization	Miller's Point	Rolling Meadows	Spring Meadows
Candlewood	50%	59%	59%	59%
Converse	72%	65%	65%	71%
Copperfield	71%	80%	80%	80%
Crestview	61%	85%	71%	68%
Fraz	47%	0	0	0
Elof	74%	74%	74%	96%
Escondido	67%	73%	73%	73%
Hartman	60%	82%	74%	86%
Hopkins	62%	68%	68%	68%
Masters	98%	79%	79%	79%
Millers Point	54%	0	70%	84%
Olympia	55%	55%	66%	55%
Park Village	34%	0	0	0
Paschall	58%	55%	64%	64%
Rolling Meadows	41%	82%	0	46%
Salinas	67%	87%	76%	94%
Selma	51%	51%	83%	48%
Spring Meadows	63%	65%	72%	0
Woodlake	60%	67%	60%	60%
Wortham Oaks	82%	82%	84%	82%

Campus Academic Programs



Essential Academics

Special Education program offered at all sites. Students in the program will transfer to the consolidation campus.



Early Childhood Special Education Co-Teach

Offered at three of the five sites being considered for consolidation. PK3 and PK4 programming with Gen Ed and Special Education students combined.



Early Childhood Special Education

Offered at three of the five sites being considered for consolidation. PK3 and PK4 programming for Special Education students.



Special Considerations

- BAC Units
- Boysville
- Elementary DAEP
- Bilingual Programs
- Innovation Sites - Awarded Grants
- Local Innovations

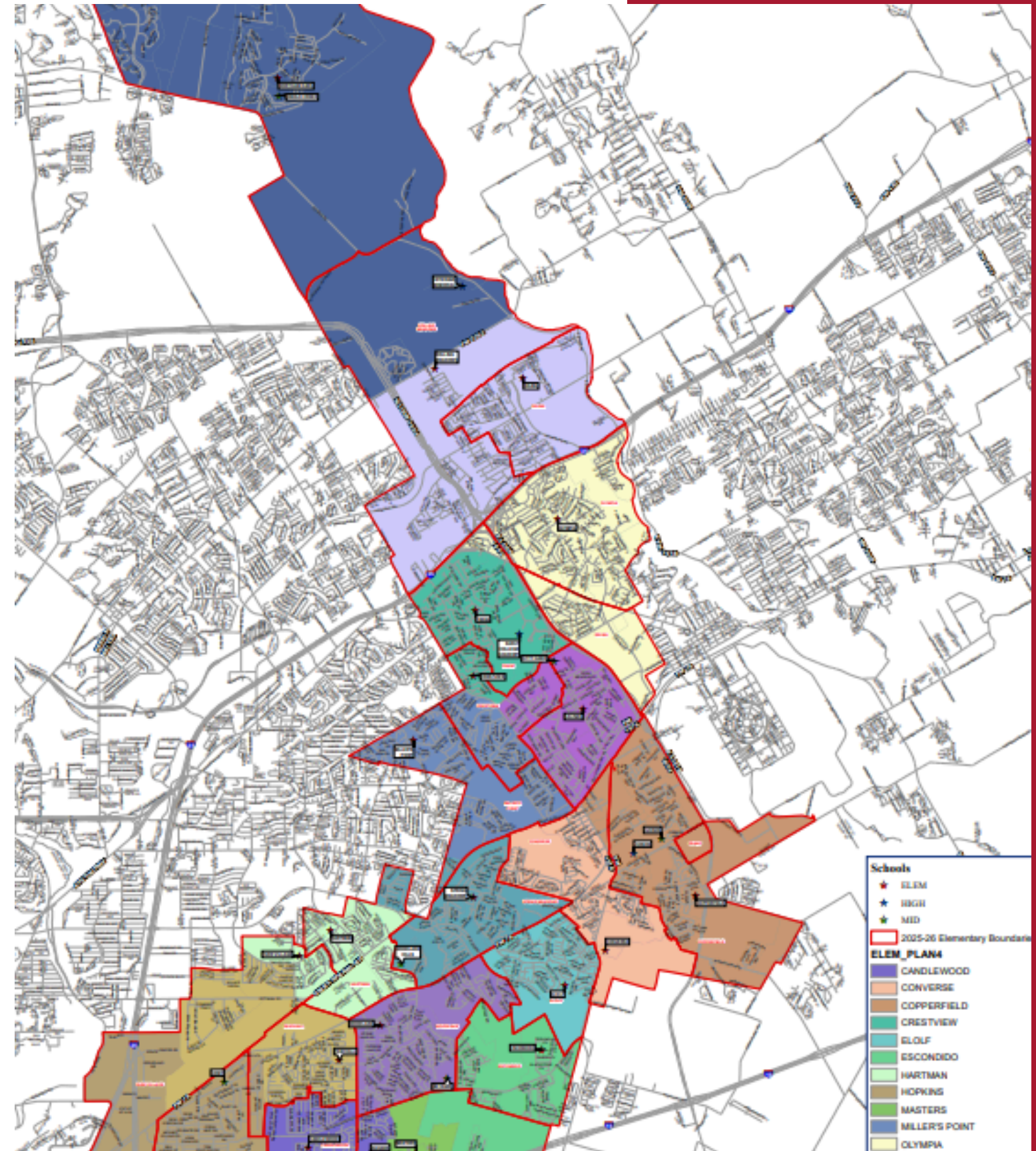


SUPERINTENDENT'S RECOMMENDATION

Superintendent Recommendation

School Consolidations

- Ed Franz Leadership Academy
- Park Village Blended Learning Academy
- Rolling Meadows Elementary

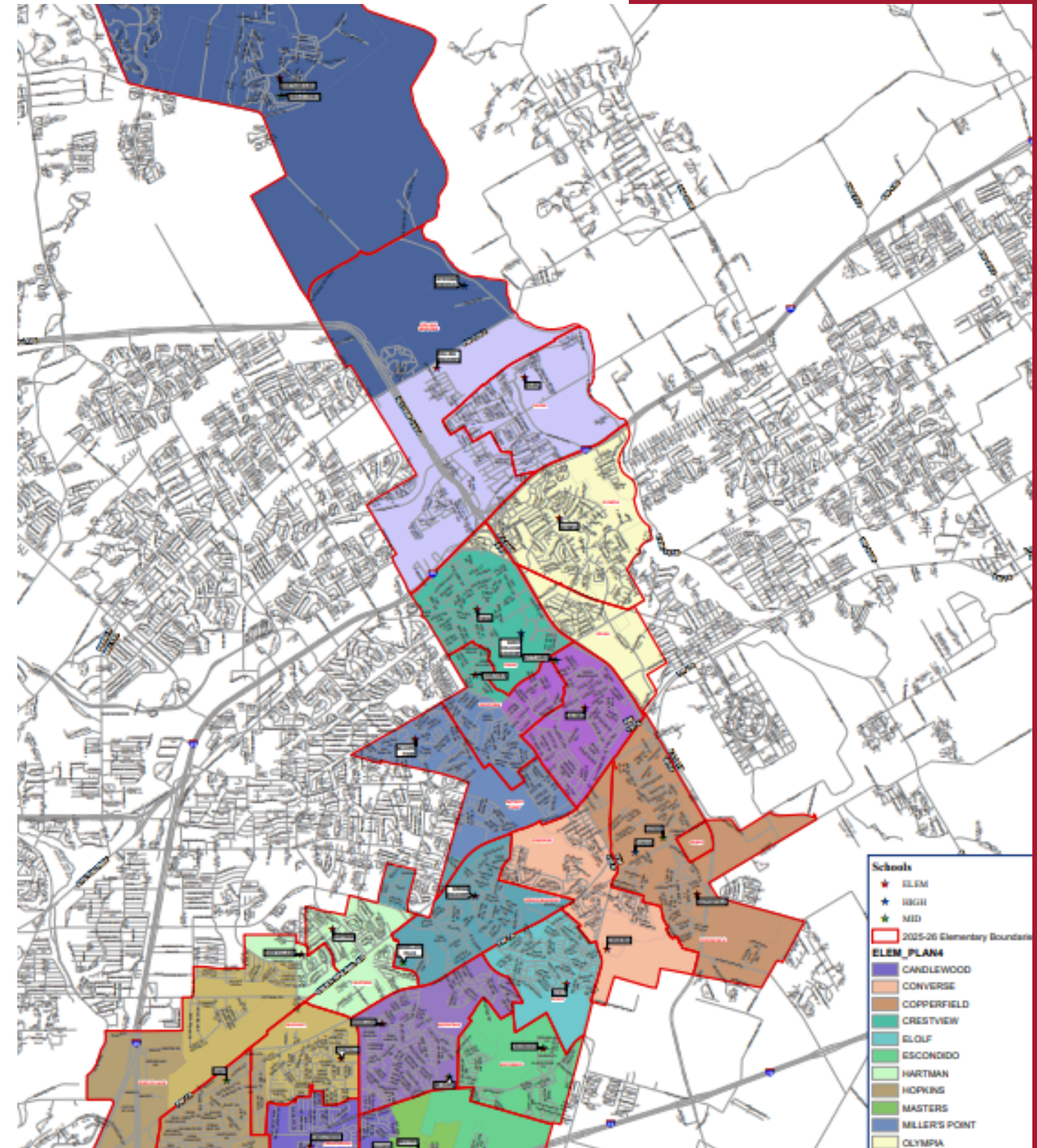


Superintendent Recommendation

Rationale

Rationale:

- District-wide distribution of students
 - All elementary campuses under 85% utilization
 - MS distribution alignment
 - Future capacities
- School proximity for transition
- Growth
- Enrollment Projections
- Future Repurposing



JUDSON ISD Park Village, Franz, Rolling Meadows Offline

SCHOOL	EE PK	KG	1	2	3	4	5	EE-5	CAPACITY	UTILIZATION
CANDLEWOOD	39	75	80	81	87	84	71	517	880	58.8%
CONVERSE	71	69	75	86	82	84	87	554	858	64.6%
COPPERFIELD	65	103	105	104	106	116	102	701	880	79.7%
CRESTVIEW	66	72	100	99	94	95	94	620	880	70.5%
ELOLF	60	91	91	92	91	115	112	652	880	74.1%
ESCONDIDO	74	93	107	118	98	117	114	721	990	72.8%
HARTMAN	74	102	100	94	128	118	128	744	1,012	73.5%
HOPKINS	79	97	133	107	112	122	100	750	1,100	68.2%
MASTERS	63	73	73	88	100	75	87	559	704	79.4%
MILLER'S POINT	41	86	85	96	97	114	109	628	902	69.6%
OLYMPIA	40	70	83	87	70	83	86	519	792	65.5%
PASCHALL	76	93	116	101	102	125	115	728	1,144	63.6%
SALINAS	52	86	101	94	117	111	105	666	880	75.7%
SELMA	75	90	109	128	123	123	119	767	924	83.0%
SPRING MEADOWS	56	92	93	97	114	102	108	662	924	71.6%
WOODLAKE	55	78	83	86	98	93	88	581	968	60.0%
WORTHAM OAKS	48	109	127	123	119	109	101	736	880	83.6%
TOTAL	1,034	1,479	1,661	1,681	1,738	1,786	1,726	11,105	15,598	71.2%

Student Distribution

Elementary Capacities

JUDSON ISD

Scenario 4 Judson Middle Offline

SCHOOL	5	6	7	8	5TH-7TH	6TH-8TH	CAPACITY	UTILIZATION
Cibolo Creek	400	330	242	223	972	795	1152	84%
Kirby	286	273	245	257	804	775	1320	61%
Kitty Hawk	316	473	435	442	1224	1350	1776	69%
Metzger	289	245	292	243	826	780	1224	67%
Woodlake Hills College Preparatory	435	336	340	378	1111	1054	1488	75%
TOTAL	1726	1657	1554	1543	4937	4754	6960	71%

Student Distribution

Middle School Capacities

Park Village, Franz, Rolling Meadows Offline

SCHOOL	EE PK	KG	1	2	3	4	5	EE-5	CAPACITY	UTILIZATION
CANDLEWOOD	39	75	80	81	87	84	71	517	880	58.8%
CONVERSE	71	69	75	86	82	84	87	554	858	64.6%
COPPERFIELD	65	103	105	104	106	116	102	701	880	79.7%
CRESTVIEW	66	72	100	99	94	95	94	620	880	70.5%
ELOLF	60	91	91	92	91	115	112	652	880	74.1%
ESCONDIDO	74	93	107	118	98	117	114	721	990	72.8%
HARTMAN	74	102	100	94	128	118	128	744	1,012	73.5%
HOPKINS	79	97	133	107	112	122	100	750	1,100	68.2%
MASTERS	63	73	73	88	100	75	87	559	704	79.4%
MILLER'S POINT	41	86	85	96	97	114	109	628	902	69.6%
OLYMPIA	40	70	83	87	70	83	86	519	792	65.5%
PASCHALL	76	93	116	101	102	125	115	728	1,144	63.6%
SALINAS	52	86	101	94	117	111	105	666	880	75.7%
SELMA	75	90	109	128	123	123	119	767	924	83.0%
SPRING MEADOWS	56	92	93	97	114	102	108	662	924	71.6%
WOODLAKE	55	78	83	86	98	93	88	581	968	60.0%
WORTHAM OAKS	48	109	127	123	119	109	101	736	880	83.6%
TOTAL	1,034	1,479	1,661	1,681	1,738	1,786	1,726	11,105	15,598	71.2%



Judson Independent School District

Next Steps



Faculty and Staff

- Meet with Campus Staff
- Establish academic program reassignments and relocation
- Communicate the employee transition process.
- Publish closure timeline



Students & Families

- Finalize boundaries
- School tours
- Bus Routes
- Registration and Enrollment
- School of Choice

Judson Independent School District

Next Steps



District Operations

- District Transition Team
- Campus Transition Team
- Enrollment
- Moving Operations and Logistics



Future Plans

- Growth and Planning
- Community Input
- District Review
- Timeline for Facility Use

Judson Independent School District

Thank You