

# Enrollment Report

Lori Volz, Director of Finance & Operations

November 12, 2024

# Tonight's Topics

1. Overview of current enrollment
2. Owatonna Online Tuition Students
3. Average Class Sizes
4. Elementary Building Capacity Rates
5. Economic Indicator Percentage
6. New Open Enrollment
7. Non-Public Enrollment
8. Estimated Year End Average Daily Membership (ADM)
9. Future Enrollment Projections

# Actual Enrollment Summary as of Nov 5, 2024

	EC	K	1	2	3	4	5	6	7	8	9	10	11	12	Total
Lincoln		64	80	80	101	90	90								505
McKinley		79	58	96	88	70	101								492
Washington		62	74	76	80	97	73								462
Wilson		75	69	80	78	70	86								458
Montessori					7	4	4								15
OMS								347	327	342					1016
OHS											367	366	376	354	1463
ALC											3	14	20	38	75
Online		1	1	1	2	3	3	10	6	19	30	53	74	62	265
VPK	80														80
ECSE	194														194
<b>Total</b>	<b>274</b>	<b>281</b>	<b>282</b>	<b>333</b>	<b>356</b>	<b>334</b>	<b>357</b>	<b>357</b>	<b>333</b>	<b>361</b>	<b>400</b>	<b>433</b>	<b>470</b>	<b>454</b>	<b>5025</b>

# Owatonna Online by Tuition Agreements

BEGINNING OF MONTH	EC	K	Gr. 1	Gr. 2	Gr. 3	Gr. 4	Gr. 5	Gr. 6	Gr. 7	Gr. 8	Gr. 9	Gr. 10	Gr. 11	Gr. 12	TOTALS
OO - Moorhead	0	0	0	0	0	0	0	0	0	0	7	2	7	7	23
OO - Northfield	0	0	0	1	0	0	1	3	2	4	3	13	14	9	50
OO- East Grand Forks	0	0	0	0	0	0	0	1	0	0	1	1	1	0	4
Total	0	0	0	1	0	0	1	4	2	4	11	16	22	16	77

# Elementary Enrollment and Average Class Sizes as of November 5, 2024

	K		1		2		3		4		5		TOTAL
	Total #	Av. Size	Total #	Av. Size	Total #	Av. Size	Total #	Av. Size	Total #	Av. Size	Total #	Av. Size	
<b>Lincoln</b>	64	21.33	80	20.00	80	20.00	101	25.25	90	22.50	90	22.50	505
<b>McKinley</b>	79	19.75	58	19.33	96	24.00	88	22.00	70	23.33	101	25.25	492
<b>Washington</b>	62	20.67	74	18.50	76	25.33	80	20.00	97	24.25	73	24.33	462
<b>Wilson</b>	75	18.75	69	23.00	80	20.00	78	19.50	70	23.33	86	28.67	458
<b>School Board Average Class Size Targets</b>		<p>* Beginning with 2-21-12 enrollment report, partial enrollments for grades K-5 were removed from enrollment data.</p> <p>*Owatonna Online totals include Moorhead &amp; Northfield tuition students</p> <p>* Red highlighted cells indicate sections that exceed the School Board Average class size targets by 3+.</p>											
<b>Grade</b>	<b>Total Average Class Size</b>												
K	19.00												
1	20.00												
2	23.00												
3	23.00		Elementary	Ave	Class	Size	22.03						
4	28.00												
5	28.00												

# Elementary Capacity

	Elementary School Capacity					
	November 4, 2024					
	Lincoln	McKinley	Washington	Wilson	Total	
Enrollment Total:	505	507	462	458	1932	
School Capacity	580	625	530	555	2290	
% Capacity	87.07%	81.12%	87.17%	82.52%	84.37%	
% District	26.14%	26.24%	23.91%	23.71%	100.00%	
1. Including Montessori						
2. Does not include space currently used for art, music and learning center						

# 24-25 OMS Class Size Summary

## Owatonna Middle School Class Size Summary Report 2024-2025

Department	Enrollment	Total Sections	Average Class size	Smallest Class Size	Largest Class Size
English	1049	46	22.8	2	33
Math	1037	38	27.2	19	33
Science	1348	52	25.9	10	34
Social Studies	1104	40	27.6	13	33
PE	1548	55	28.1	10	38
Music	942	26	36.2	12	63
FACS	686	28	24.5	19	32
Health	640	23	27.8	20	34
Art	1005	43	23.3	13	29
AVID	51	2	25.5	24	27
Foreign Language	778	32	24.3	11	33
Total OMS Average Class Size	10188	385	26.5		
Average Class Size w/o Music	9246	359	25.8		

# 24-25 OHS Class Size Summary

## Owatonna High School Class Size Summary Report 2024-2025

Department	Enrollment	Total Sections	Average Class size	Smallest Class Size	Largest Class Size
Agriculture	394	15	26.2	19	32
Art	995	39	25.5	1	35
Business	953	31	30.7	3	37
FACS	799	31	25.8	13	34
Health	673	27	24.9	10	35
Language Arts	2048	82	24.9	6	35
Math	1600	71	22.5	6	35
Music	622	13	47.8	1	117
Options	150	12	12.5	9	16
Physical Education	914	32	28.5	10	39
Science	1404	57	24.6	1	33
Social Studies	2175	78	27.8	3	38
Technology Education	534	23	23.2	1	29
Foreign Language	576	24	24.0	4	34
<b>Total OHS Class Size</b>	<b>13837</b>	<b>535</b>	<b>25.9</b>		
<b>Class Size w/o Music</b>	<b>13215</b>	<b>522</b>	<b>25.3</b>		



# Economic Indicator Comparison Report

School Name	2023/24					2024/25				
	Enrolled Oct 1				%	Enrolled Oct 1				%
	PK-12	Reduced	+Free	=Total		PK-12	Reduced	+Free	=Total	
150 OWATONNA SENIOR HIGH	1494	89	442	531	35.5	1468	77	392	469	31.9
151 Owatonna Middle School	1015	81	382	463	45.6	1015	67	363	430	42.4
602 ESY	0	0	0	0	0.0	0	0	0	0	0.0
605 OWATONNA SUMMER SCHOOL 9-12	0	0	0	0	0.0	0	0	0	0	0.0
610 OWATONNA ALC 9-12	90	4	60	64	71.1	70	11	45	56	80.0
611 OWATONNA EXTENDED DAY K-8	0	0	0	0	0.0	0	0	0	0	0.0
612 Owatonna Summer School K-5	0	0	0	0	0.0	0	0	0	0	0.0
613 Owatonna Summer School 6-8	0	0	0	0	0.0	0	0	0	0	0.0
614 Owatonna Night School	0	0	0	0	0.0	0	0	0	0	0.0
801 OEC ELC	.	.	.	.	.	106	9	48	57	53.8
802 Roosevelt ELC	.	.	.	.	.	30	2	14	16	53.3
901 LINCOLN ELEMENTARY	609	36	183	219	36.0	505	31	151	182	36.0
902 MCKINLEY ELEMENTARY	483	20	197	217	44.9	510	32	212	244	47.8
903 OWATONNA ECSE	107	13	55	68	63.6	87	9	46	55	63.2
904 WASHINGTON ELEMENTARY	484	50	164	214	44.2	467	40	143	183	39.2
905 WILSON ELEMENTARY	538	49	313	362	67.3	454	38	224	262	57.7
909 Owatonna Online K-6	58	3	46	49	84.5	14	1	8	9	64.3
910 Owatonna Online 9-12	66	8	26	34	51.5	136	6	60	66	48.5
911 Owatonna Online 7-8	29	4	13	17	58.6	22	5	10	15	68.2
912 Out of State Care and Treatment	.	.	.	.	.	0	0	0	0	0.0

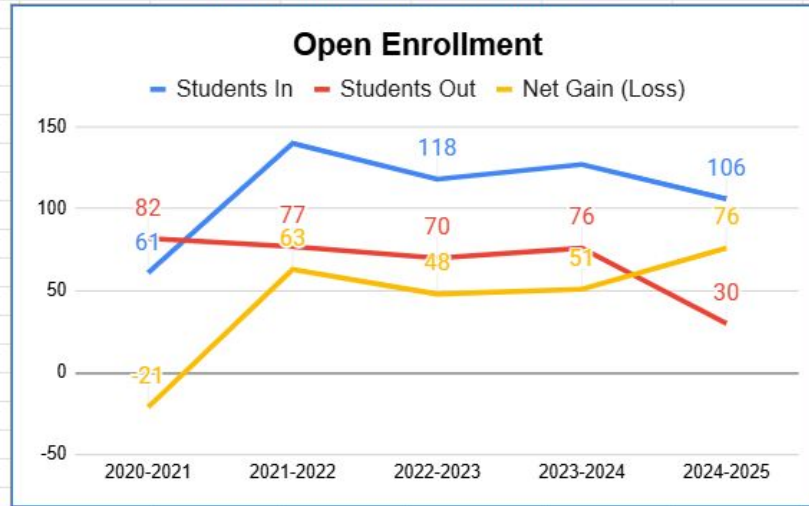
TOTAL 4973 357 1881 2238 45.0 4884 328 1716 2044 41.9

# Open Enrollment

## Open Enrollment Trends - New Open Enrollments Each Year

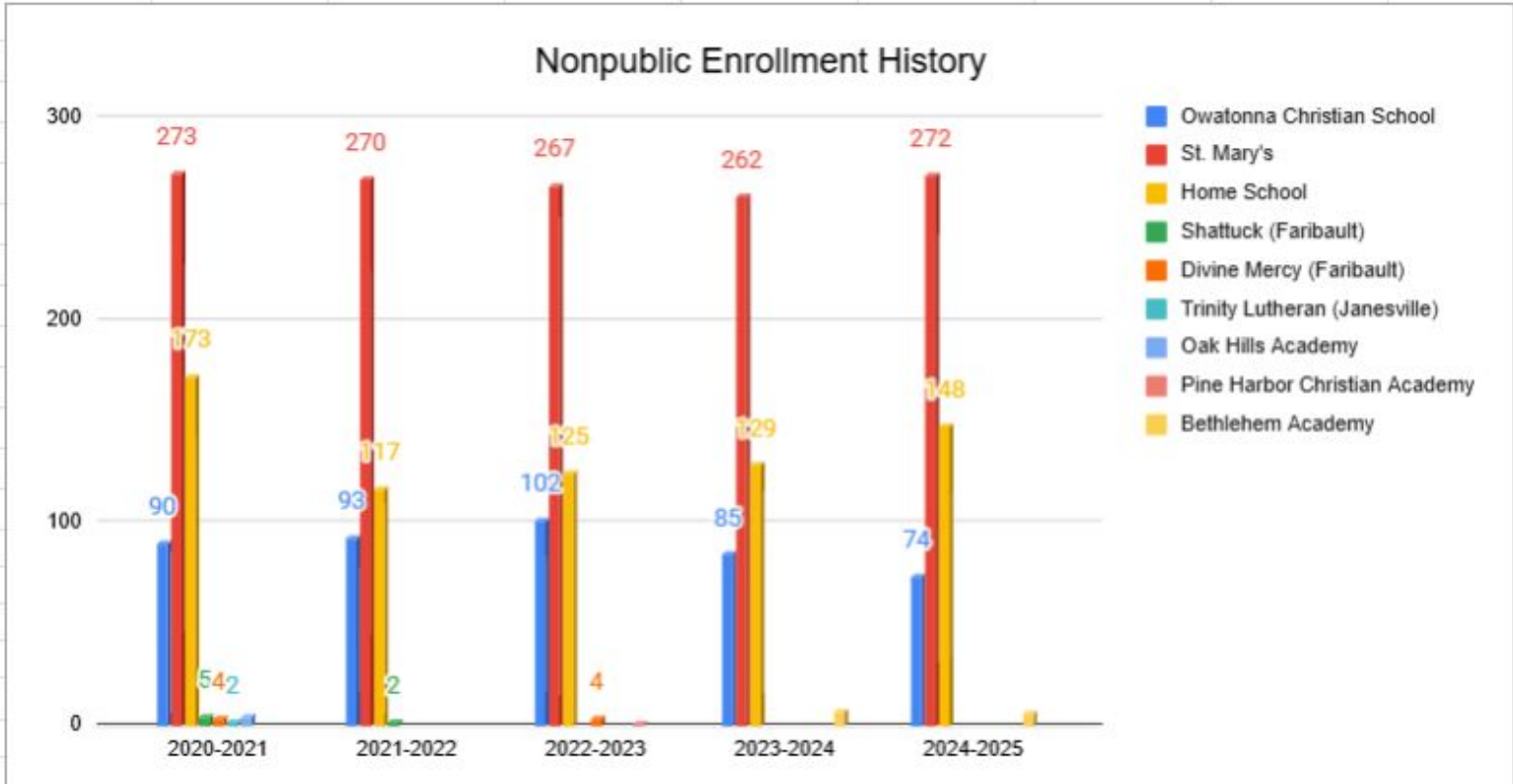
24-25 data is as of 11/4/2024

Previous year data is as of the end of that school year.



	2020-2021	2021-2022	2022-2023	2023-2024	2024-2025
Students In	61	140	118	127	106
Students Out	82	77	70	76	30
Net Gain (Loss)	-21	63	48	51	76

# Nonpublic Enrollment



# ENROLLMENT GRAPHS & TABLES

11/6/2024

OWATONNA

761

Method

The selected History for Tables & Graphs was: *END OF YEAR A.D.M.*

with *Wt Ratio 2 Yrs*

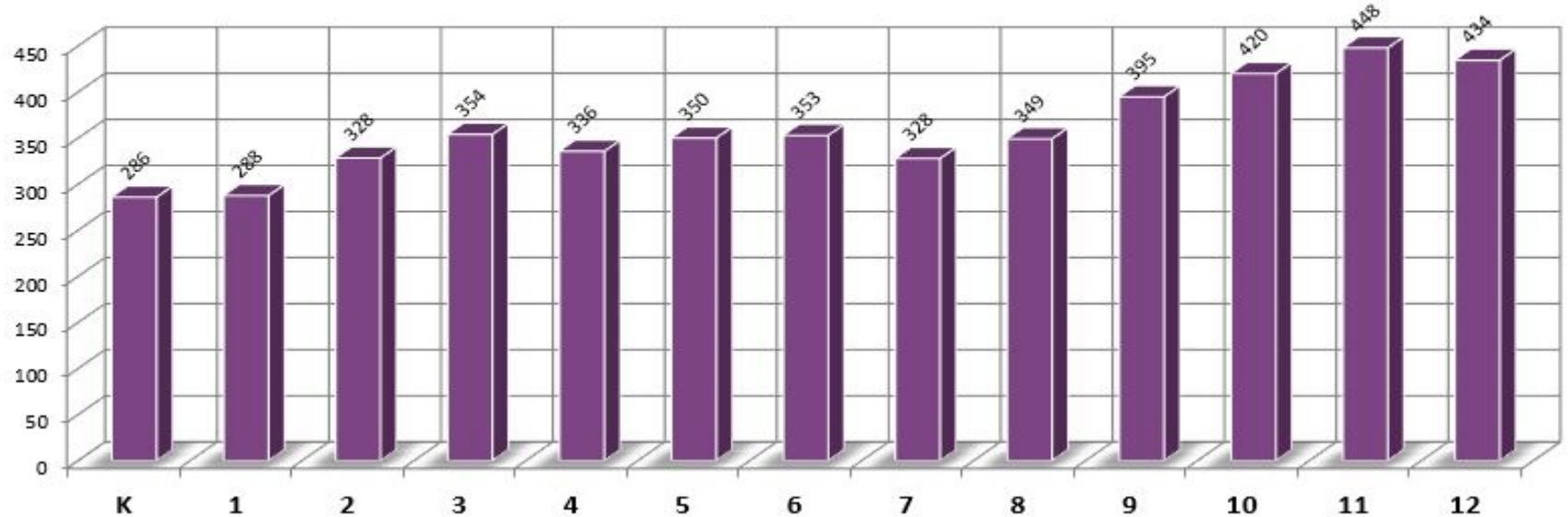
(2)

	Enrollment History - END-OF-YEAR ADM DATA							Enrollment Projections - END-OF-YEAR ADM DATA				
	2018-19	2019-20	2020-21	2021-22	2022-23	2023-24	2024-25	2025-26	2026-27	2027-28	2028-29	2029-30
EC	80.8	75.6	73.5	78.2	84.1	89.6	80.5	78.9	86.3	84.9	78.4	78.6
VPK	32.8	21.7	20.3	25.5	24.5	32.4	33.2	33.2	33.2	33.2	33.2	33.2
K	362.9	376.7	328.1	349.5	323.1	279.8	285.8	280.3	306.5	301.6	278.4	278.9
1	326.5	353.5	365.6	344.8	345.3	337.1	287.5	295.1	289.5	316.5	311.5	287.6
2	362.4	317.8	340.1	370.9	341.1	367.1	328.2	288.5	296.2	290.5	317.6	312.6
3	333.8	358.6	315.7	357.1	370.4	338.2	353.9	319.4	280.8	288.2	282.7	309.1
4	382.7	327.9	335.5	327.6	352.8	365.8	335.6	350.7	316.5	278.2	285.6	280.1
5	396.7	368.9	329.1	351.9	331.7	358.8	349.9	327.8	342.5	309.1	271.7	278.9
6	385.9	384.9	359.0	318.7	362.2	333.9	352.8	346.8	324.9	339.5	306.4	269.3
7	369.8	372.1	367.8	350.0	327.2	367.3	327.8	350.2	344.2	322.5	336.9	304.1
8	349.6	364.2	368.4	375.6	352.6	338.3	349.1	320.7	342.6	336.7	315.5	329.6
9	437.2	383.9	407.2	419.6	415.1	406.8	394.6	405.7	372.7	398.1	391.3	366.6
10	396.2	428.0	367.3	403.8	421.1	419.9	419.9	404.6	416.0	382.1	408.2	401.2
11	343.0	397.8	421.5	358.6	399.8	435.8	447.8	443.4	427.2	439.2	403.5	431.0
12	383.1	351.3	416.6	447.8	375.0	395.9	434.3	445.3	440.9	424.8	436.8	401.3
K-12	4,829.6	4,785.7	4,721.7	4,775.9	4,717.4	4,744.7	4,667.2	4,578.4	4,500.2	4,427.0	4,346.0	4,250.2
Pre K-12	4,943.2	4,883.0	4,815.5	4,879.6	4,826.0	4,866.7	4,780.9	4,690.5	4,619.8	4,545.2	4,457.6	4,362.0
% Change K-12		-0.91%	-1.34%	1.15%	-1.22%	0.58%	-1.63%	-1.90%	-1.71%	-1.63%	-1.83%	-2.20%

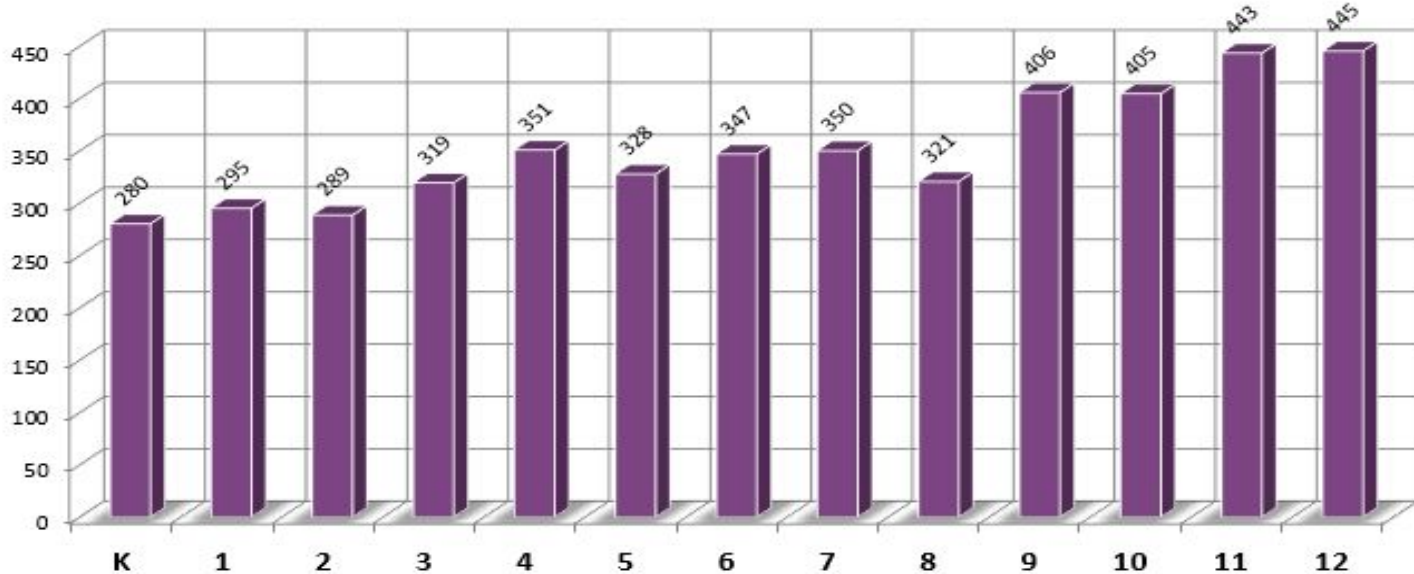
## Enrollment by Grade for Current Year 2024-25

# Estimated Year End Average Daily Membership (ADM)

## Enrollment by Grade for Current Year 2024-25

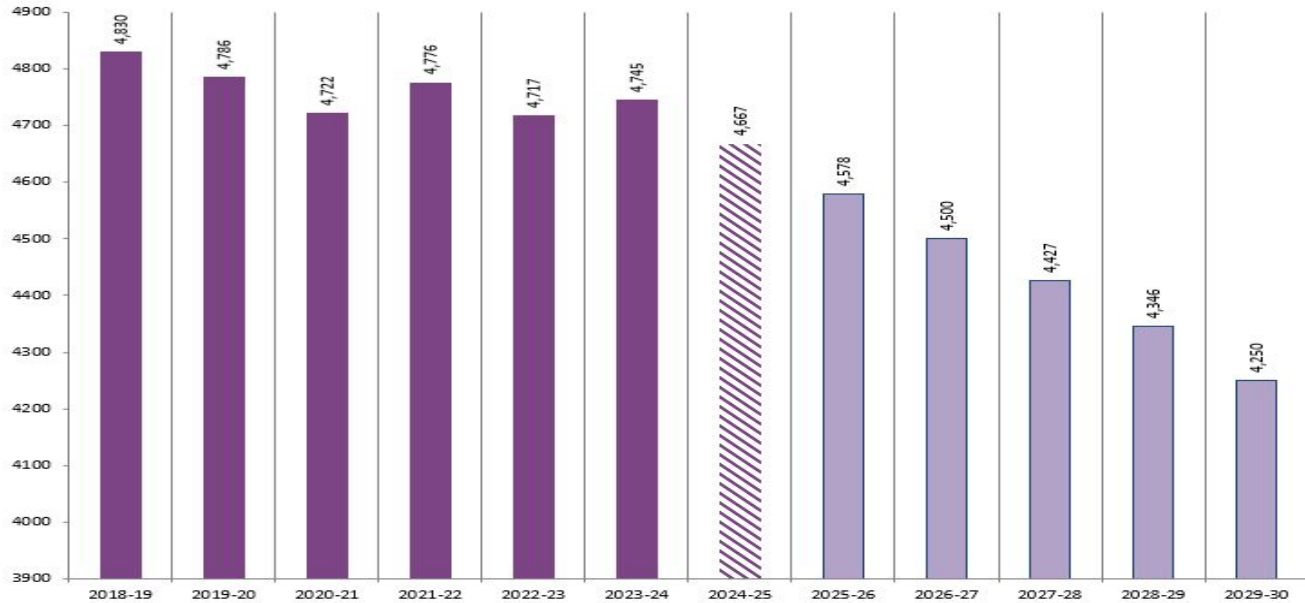


# Estimated Year End Average Daily Membership (ADM) Enrollment by Grade for 1st Projection Year 2025-26



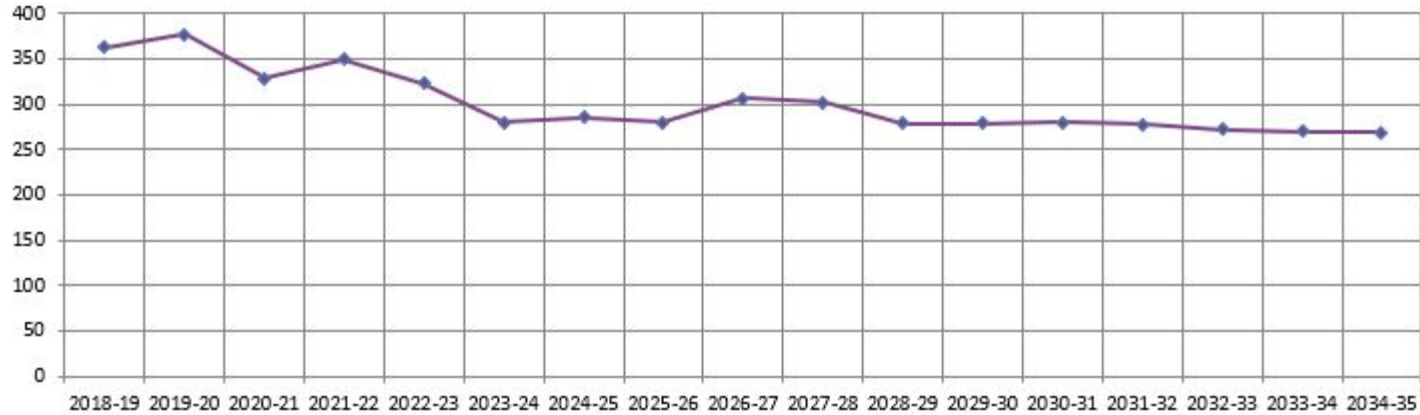
# K-12 Enrollment History and Projected ADM

**K-12 ENROLLMENT HISTORY & PROJECTED TOTAL ENROLLMENT**



# Kindergarten historical enrollment and future projection

Kindergarten Enrollment Anticipated in Projection





# Average Daily Membership Grade Migration Forecast

A review of the data in the table below will provide information about the enrollment migration by Grade in prior years and the migration that is anticipated in the projection years.

	Enrollment History							Enrollment Projections					
	2018-19	2019-20	2020-21	2021-22	2022-23	2023-24	2024-25	2025-26	2026-27	2027-28	2028-29	2029-30	2030-31
12 - K		(6.3)	(23.2)	(67.1)	(124.7)	(95.2)	(110.1)	(154.0)	(138.9)	(139.3)	(146.4)	(157.9)	(121.0)
1		(9.4)	(11.2)	16.8	(4.2)	14.0	7.7	9.4	9.2	10.1	9.9	9.1	9.2
2		(8.7)	(13.4)	5.3	(3.7)	21.8	(8.9)	1.0	1.0	1.0	1.1	1.1	1.0
3		(3.8)	(2.1)	17.1	(0.4)	(2.9)	(13.2)	(8.8)	(7.7)	(7.9)	(7.8)	(8.5)	(8.4)
4		(5.9)	(23.1)	12.0	(4.3)	(4.7)	(2.5)	(3.2)	(2.9)	(2.6)	(2.6)	(2.6)	(2.8)
5		(13.8)	1.2	16.4	4.1	6.0	(15.9)	(7.8)	(8.2)	(7.4)	(6.5)	(6.7)	(6.5)
6		(11.8)	(9.9)	(10.4)	10.3	2.2	(6.0)	(3.1)	(2.9)	(3.0)	(2.7)	(2.4)	(2.5)
7		(13.8)	(17.1)	(9.0)	8.5	5.1	(6.1)	(2.6)	(2.6)	(2.4)	(2.5)	(2.3)	(2.0)
8		(5.6)	(3.7)	7.8	2.6	11.2	(18.2)	(7.1)	(7.6)	(7.4)	(7.0)	(7.3)	(6.6)
9		34.4	43.0	51.3	39.5	54.2	56.2	56.6	52.0	55.5	54.6	51.1	53.4
10		(9.2)	(16.6)	(3.5)	1.5	4.8	13.1	10.0	10.3	9.5	10.1	9.9	9.3
11		1.7	(6.6)	(8.7)	(4.0)	14.7	27.9	23.5	22.6	23.3	21.4	22.8	22.4
12		8.3	18.7	26.3	16.4	(3.9)	(1.5)	(2.5)	(2.5)	(2.4)	(2.4)	(2.2)	(2.4)
<b>Total Migration</b>		(37.6)	(40.8)	121.3	66.2	122.5	32.7	65.2	60.7	66.1	65.4	62.1	64.1
<b>Total Enrollment Change by Year</b>		(43.9)	(64.0)	54.3	(58.5)	27.2	(77.5)	(88.8)	(78.2)	(73.2)	(81.0)	(95.8)	(56.9)
	2019-20	2020-21	2021-22	2022-23	2023-24	2024-25	2025-26	2026-27	2027-28	2028-29	2029-30	2030-31	

Questions?