



ROSEVILLE AREA SCHOOLS

2023-24 Program Participation Report

February 26, 2025



District Goals & Key Strategies

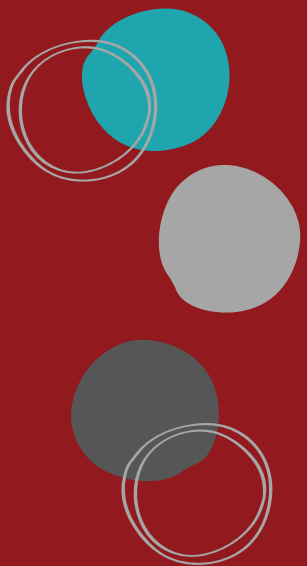
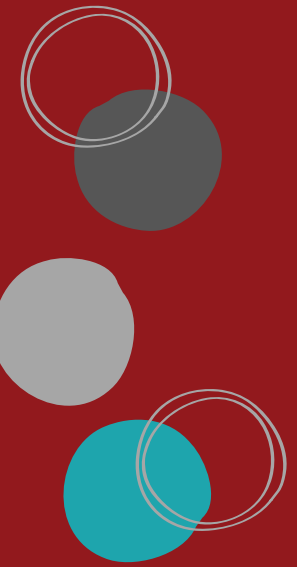


District Goal #1

Our graduates are prepared to achieve their goals and aspirations.

Strategies

- **Deliver a challenging, joyful, and safe learning environment**
- **Deliver innovative, effective practices and systems**

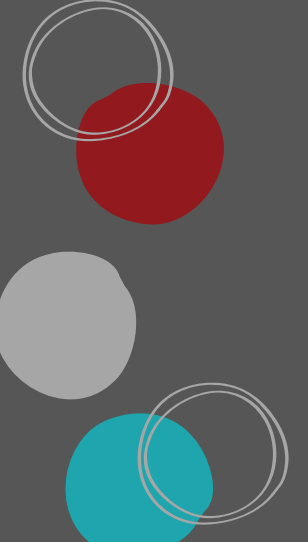




District Goal #2

Our learners contribute to an equitable, caring society.

Strategies

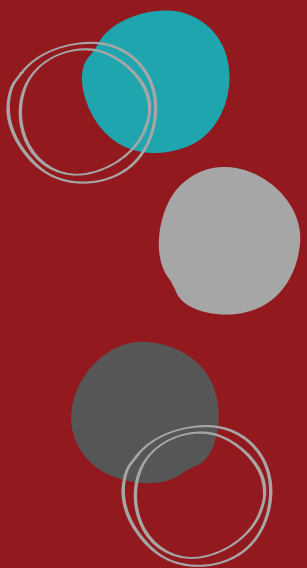
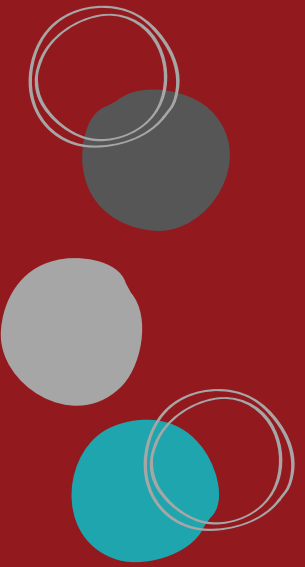
- Cultivate student engagement and joy in learning
 - **Amplify student leadership and voice in decision making**
 - **Support learner resiliency (student social and emotional learning and mental health)**
- 

District Goal #3

**We are a culturally responsive,
inclusive, anti-racist district.**

Strategies

- **Build a culture of belonging where all feel welcome, included, and safe**

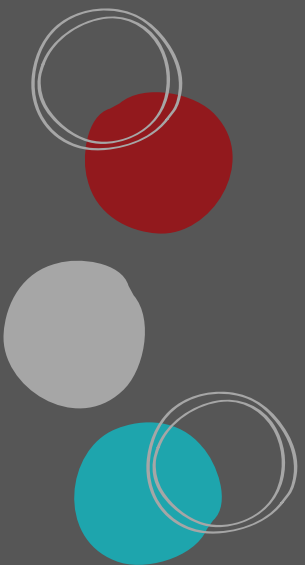
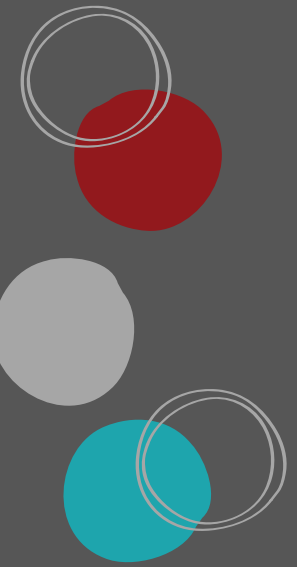


District Goal #4

The community is united behind meeting student needs.

Strategies

- Build a culture of belonging

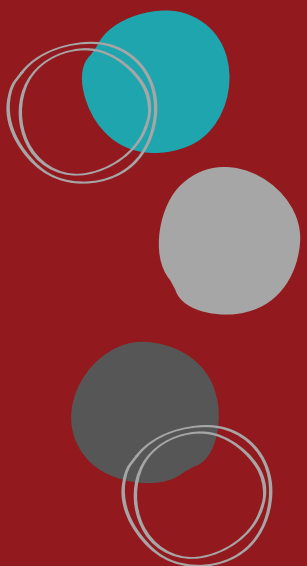
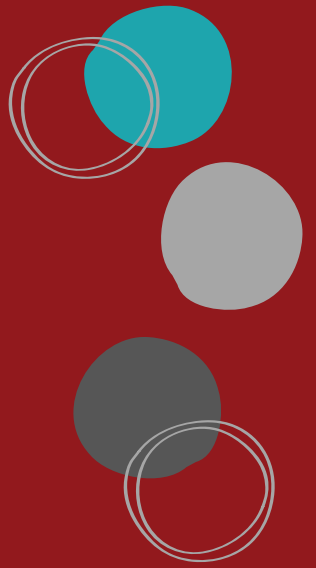


District Goal #5

We are financially secure

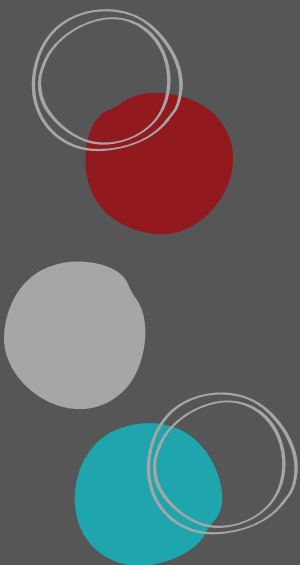
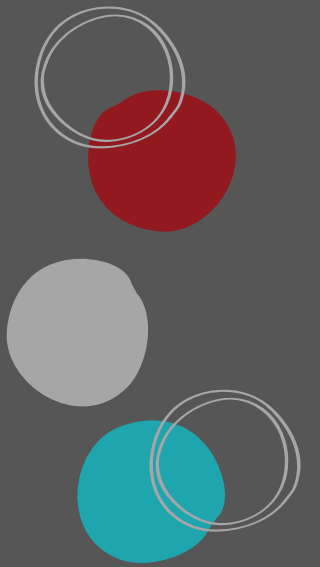
Strategies

- Cultivate and maintain community trust



Information about the Program Participation Report

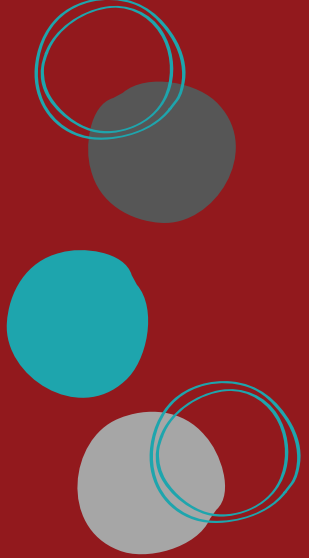
- This report is provided for our school board and educational stakeholders as an update on areas of the strategic plan
- The information and data in this report is used by school district staff to review trends and take responsibility to interrupt our systems that create inequities
- Staff use the information and data in this report to better serve our students and change the educational experience for our students who are furthest from justice



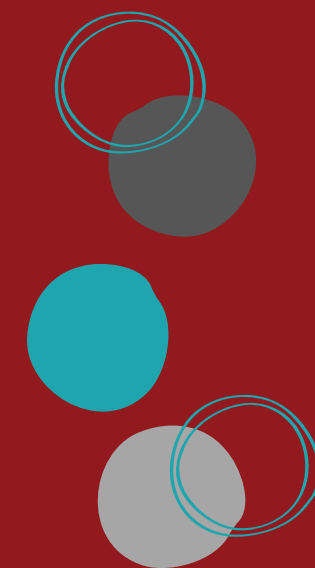


Report Sections:

- **Advanced Academics and Talent Development**
 - **Activities and Athletics**
 - **Special Education**
- 



Advanced Academics and Talent Development





Advanced Academics and Talent Development (AATD)

Identified grades 3-12

Informally Identified K&1





Advanced Academics and Talent Development (AATD)

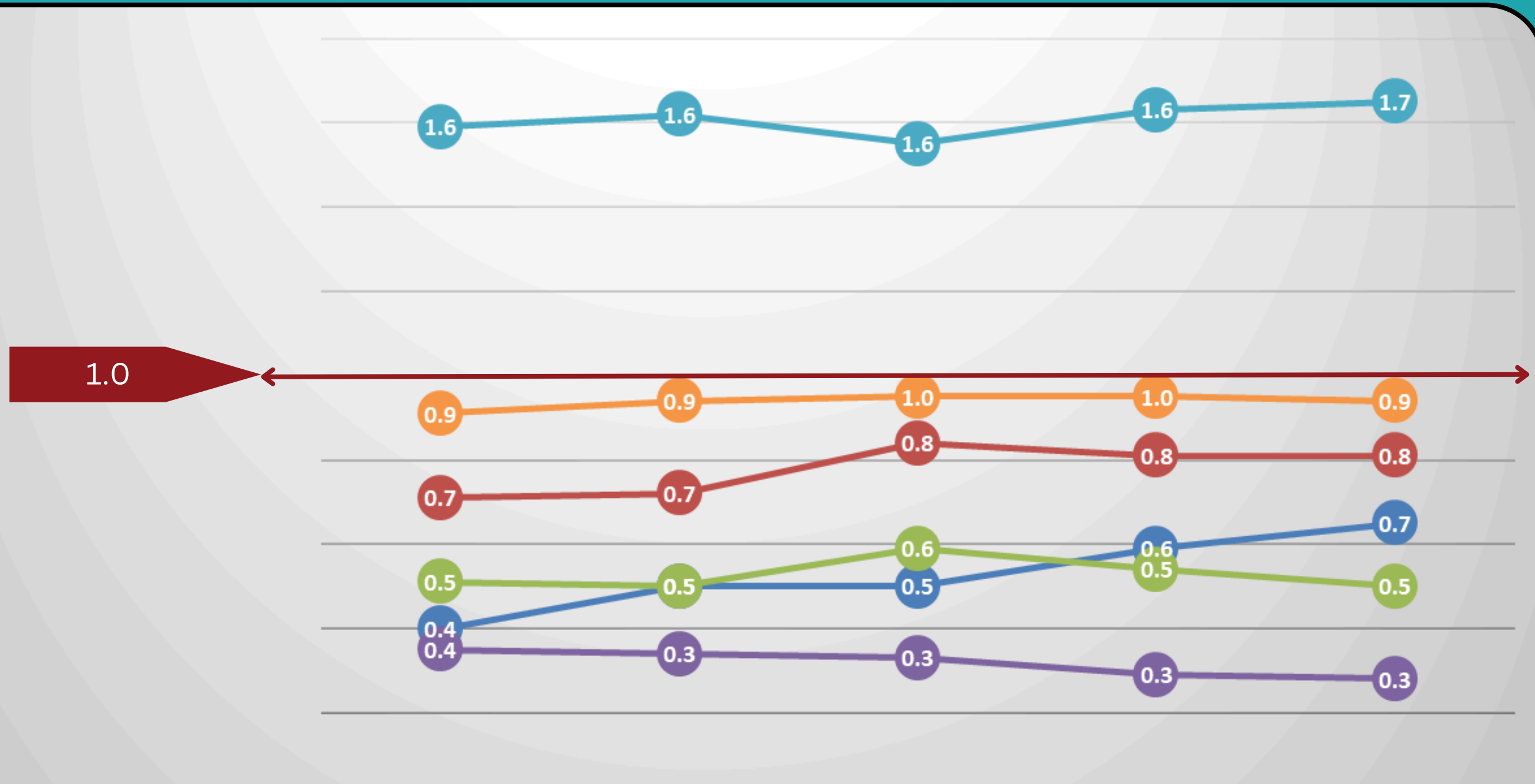
Identification through universal screening in K-4

**Identified students require advanced academic programming
beyond what is offered at grade level**

Enrichment, Acceleration

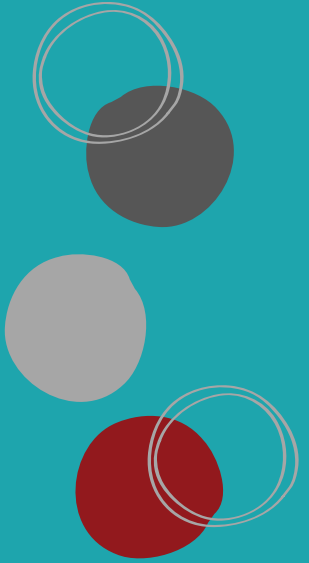
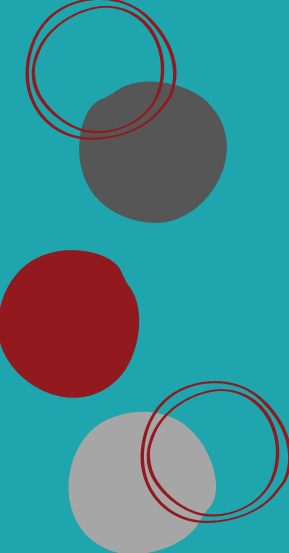
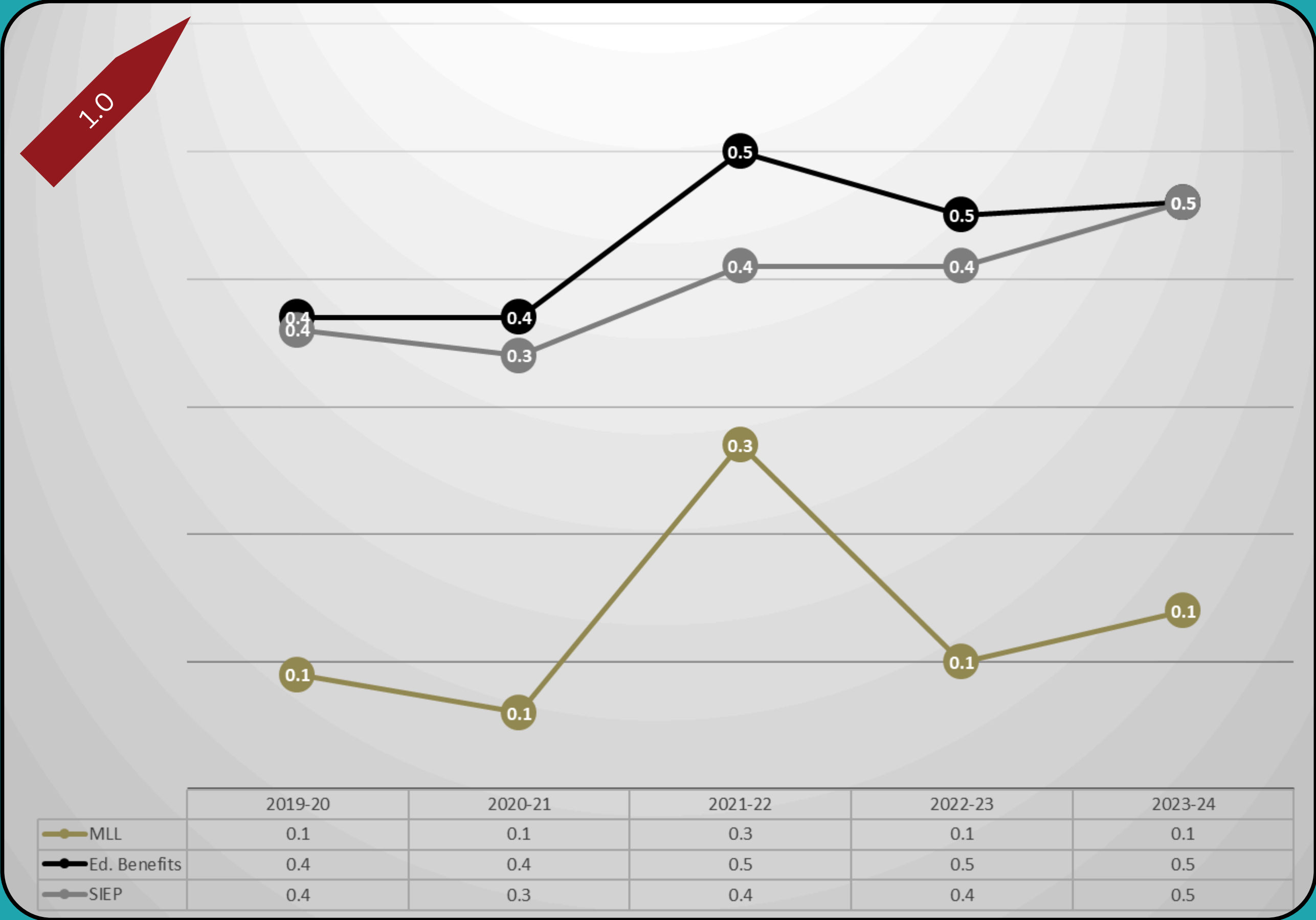


AATD Trends by Race/Ethnicity

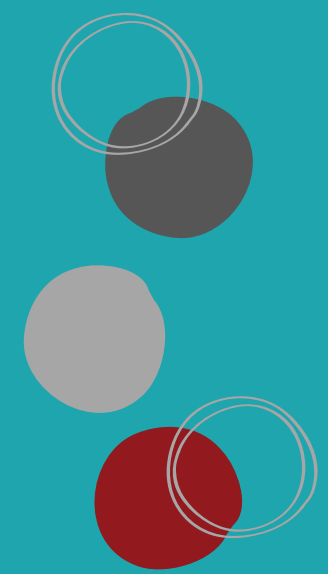
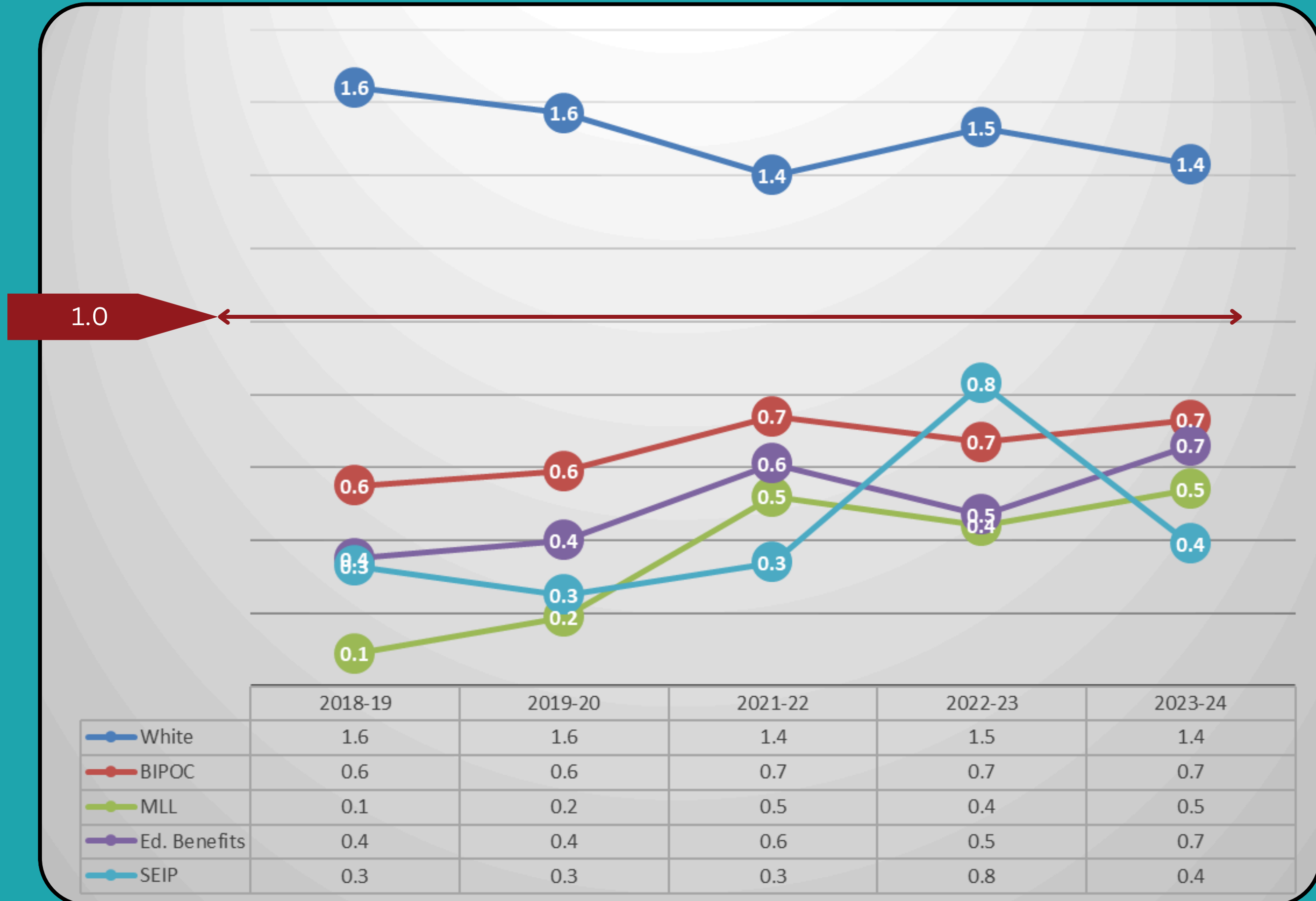


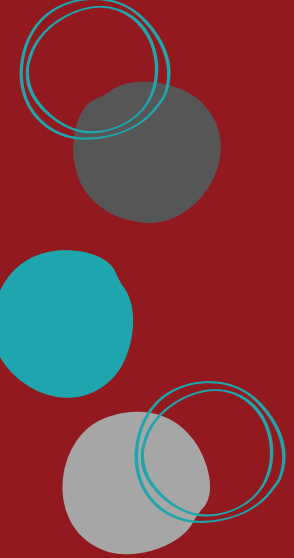
	2019-20	2020-21	2021-22	2022-23	2023-24
American Indian	0.4	0.5	0.5	0.6	0.7
Asian	0.7	0.7	0.8	0.8	0.8
Hispanic	0.5	0.5	0.6	0.5	0.5
Black	0.4	0.3	0.3	0.3	0.3
White	1.6	1.6	1.6	1.6	1.7
Multiracial	0.9	0.9	1.0	1.0	0.9

AATD by Student Groups

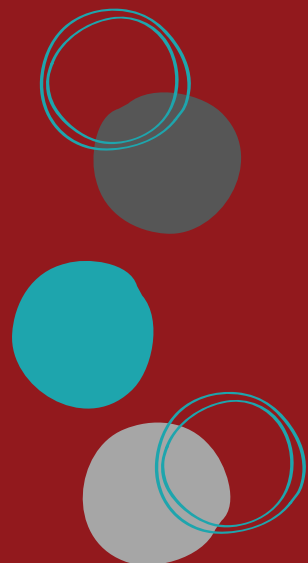


AATD Initial Identification by Student Groups





Activities and Athletics



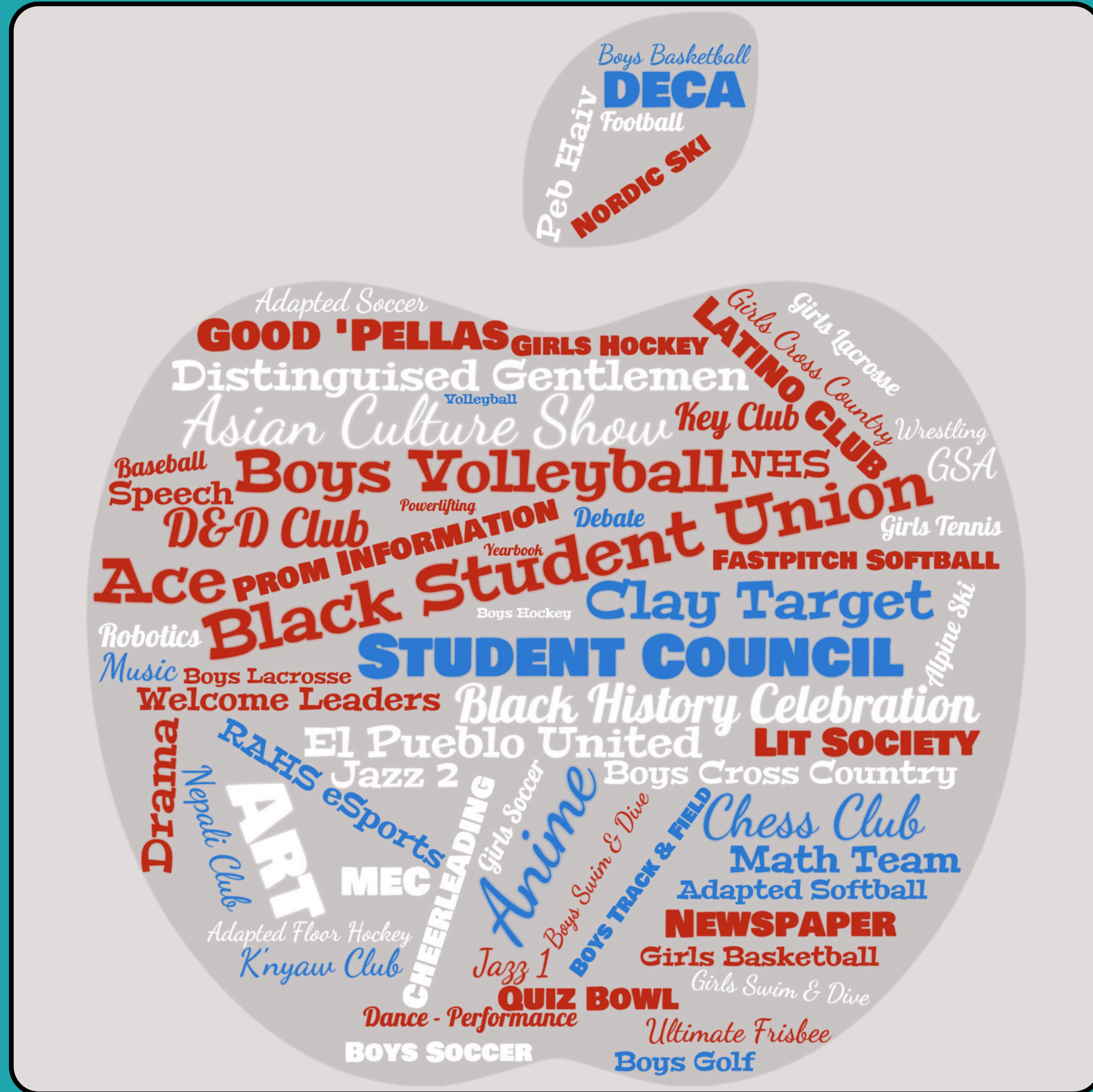


Secondary Activities

5 Activities Categories:

- Academic Groups
 - Athletics
 - Clubs
 - Fine Arts
 - Community Education Courses
- 

Secondary Activities



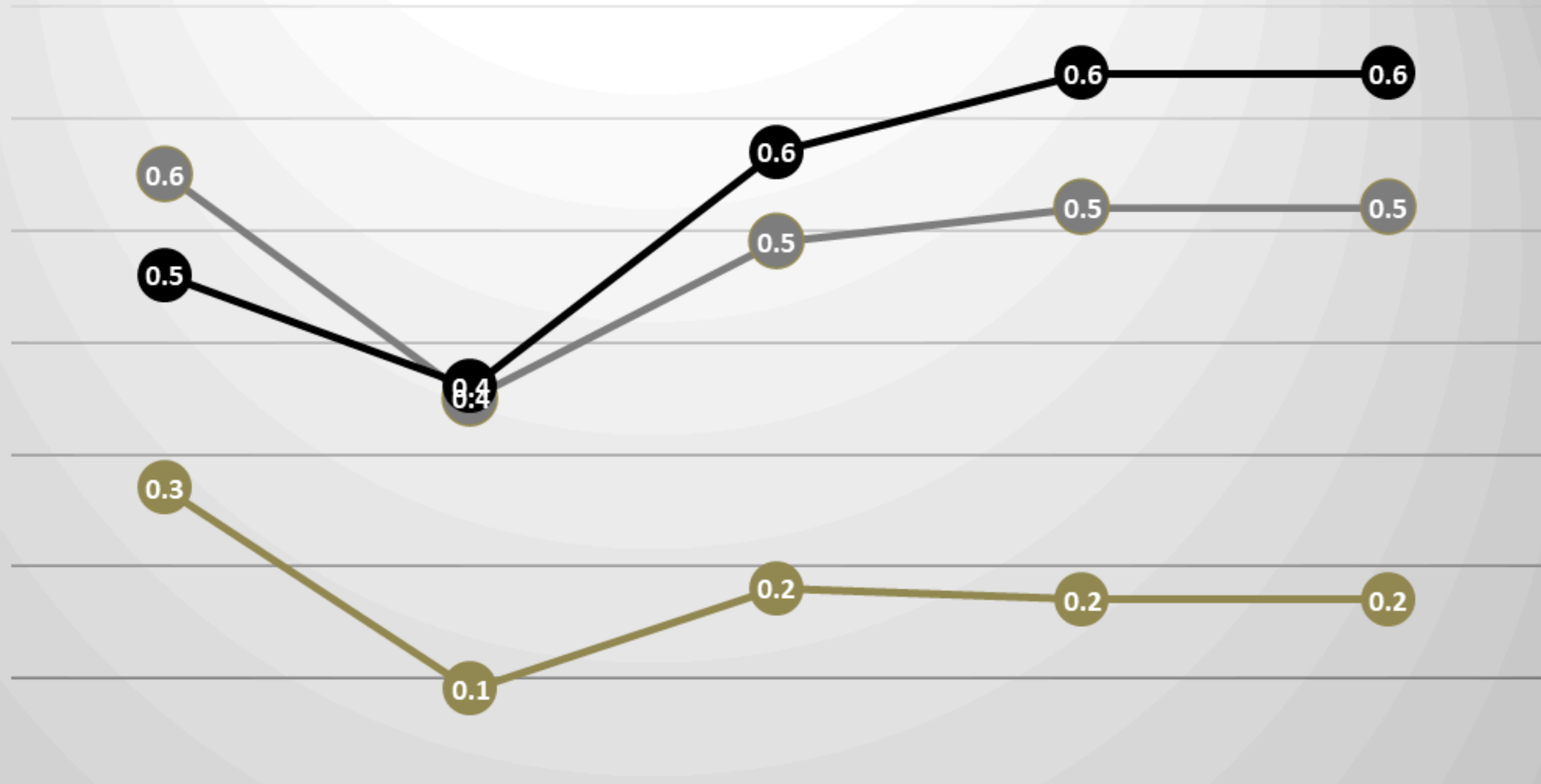
Activities Trend by Race/Ethnicity



	2019-20*	2020-21*	2021-22	2022-23	2023-24
American Indian	0.3	0.5	0.2	1.3	1.3
Asian	0.7	0.6	0.6	0.7	0.7
Hispanic	0.4	0.4	0.5	0.4	0.4
Black	0.7	0.4	0.6	0.5	0.5
White	1.4	1.7	1.5	1.6	1.6
Multiracial	1.3	0.8	1.0	0.9	0.9

Activities Trend by Student Groups

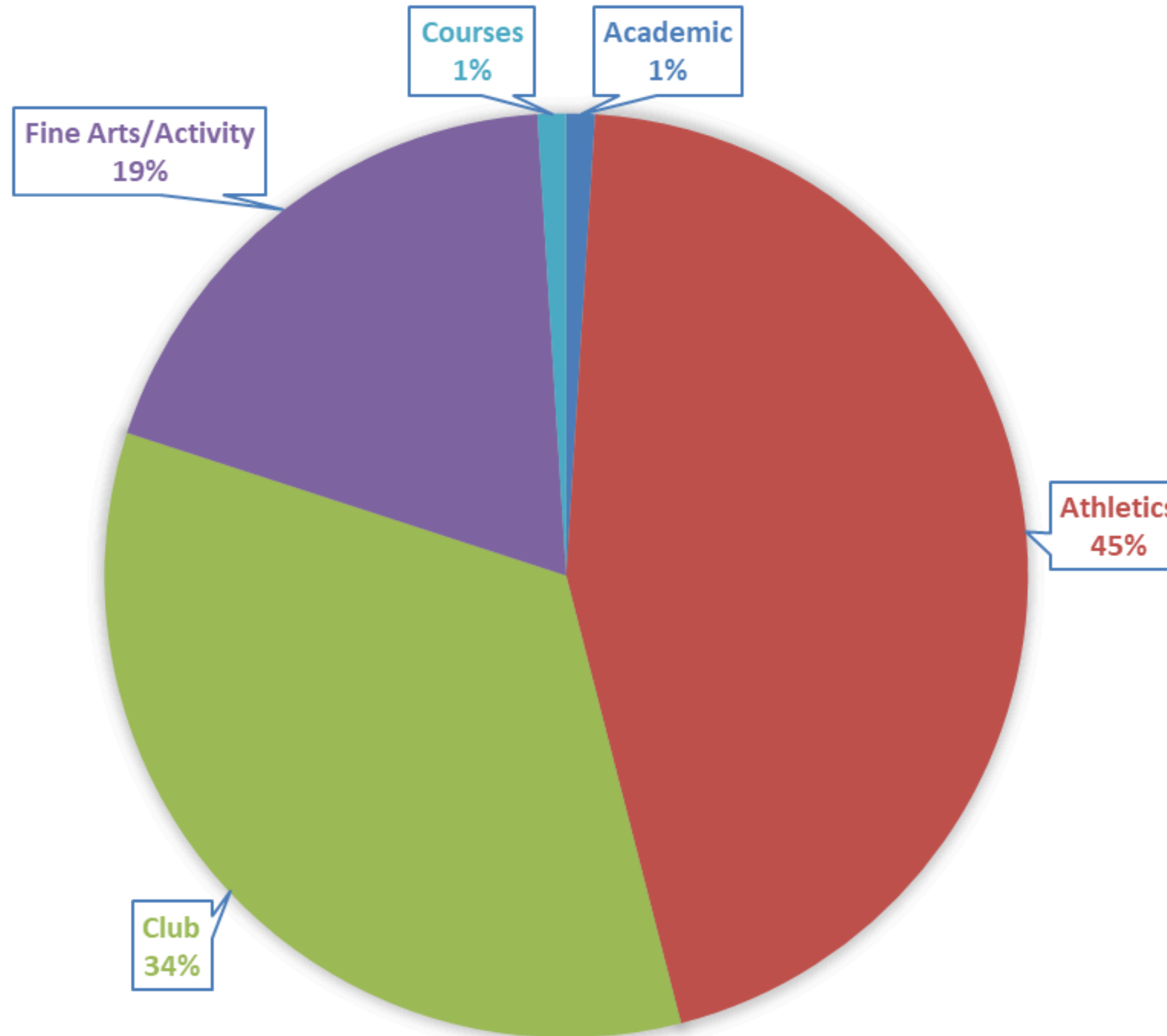
1.0



	2019-20*	2020-21*	2021-22	2022-23	2023-24
MLL	0.3	0.1	0.2	0.2	0.2
Ed. Benefits	0.6	0.4	0.5	0.5	0.5
SIEP	0.5	0.4	0.6	0.6	0.6

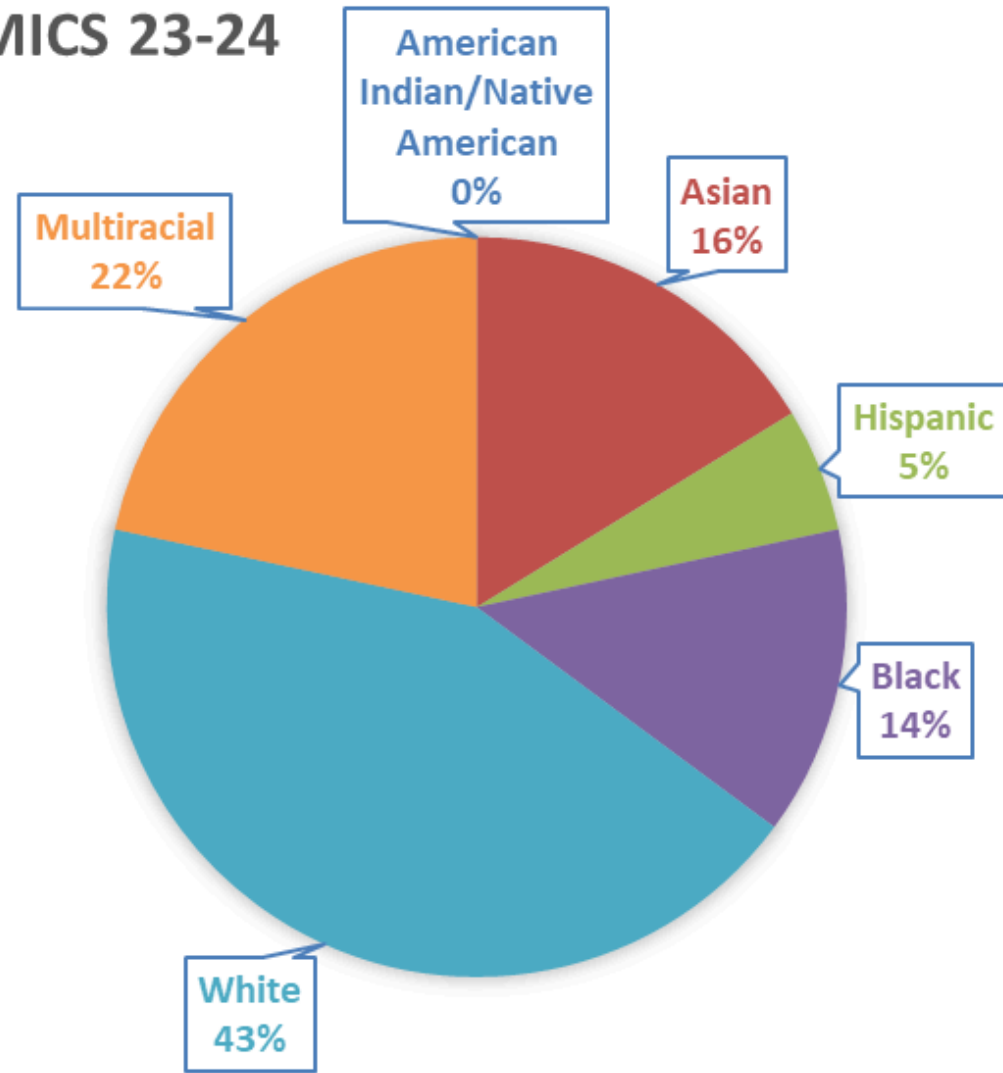
Secondary Activities

SECONDARY ACTIVITIES CATEGORY SUMMARY

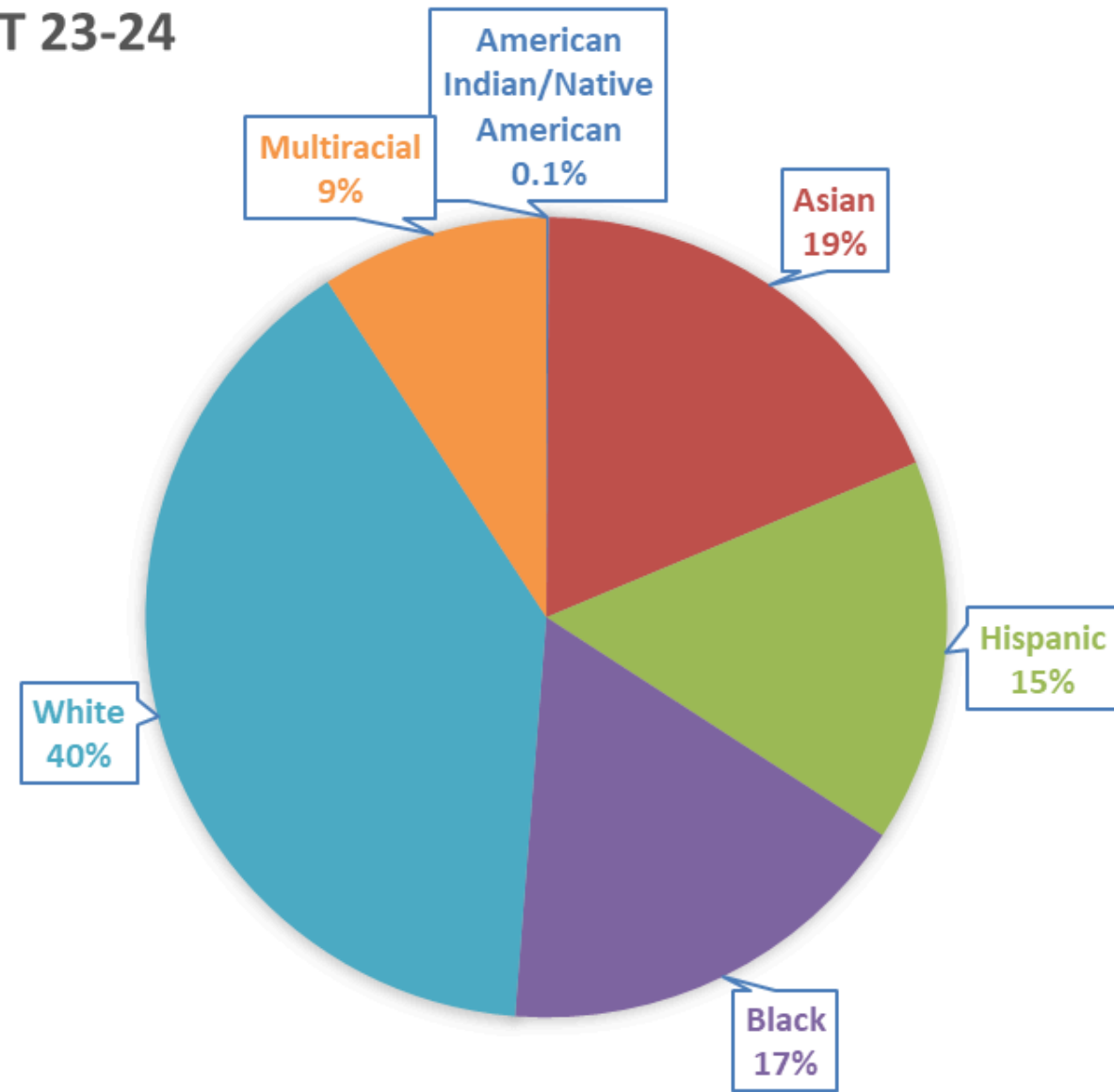


Activities: Academics

ACADEMICS 23-24

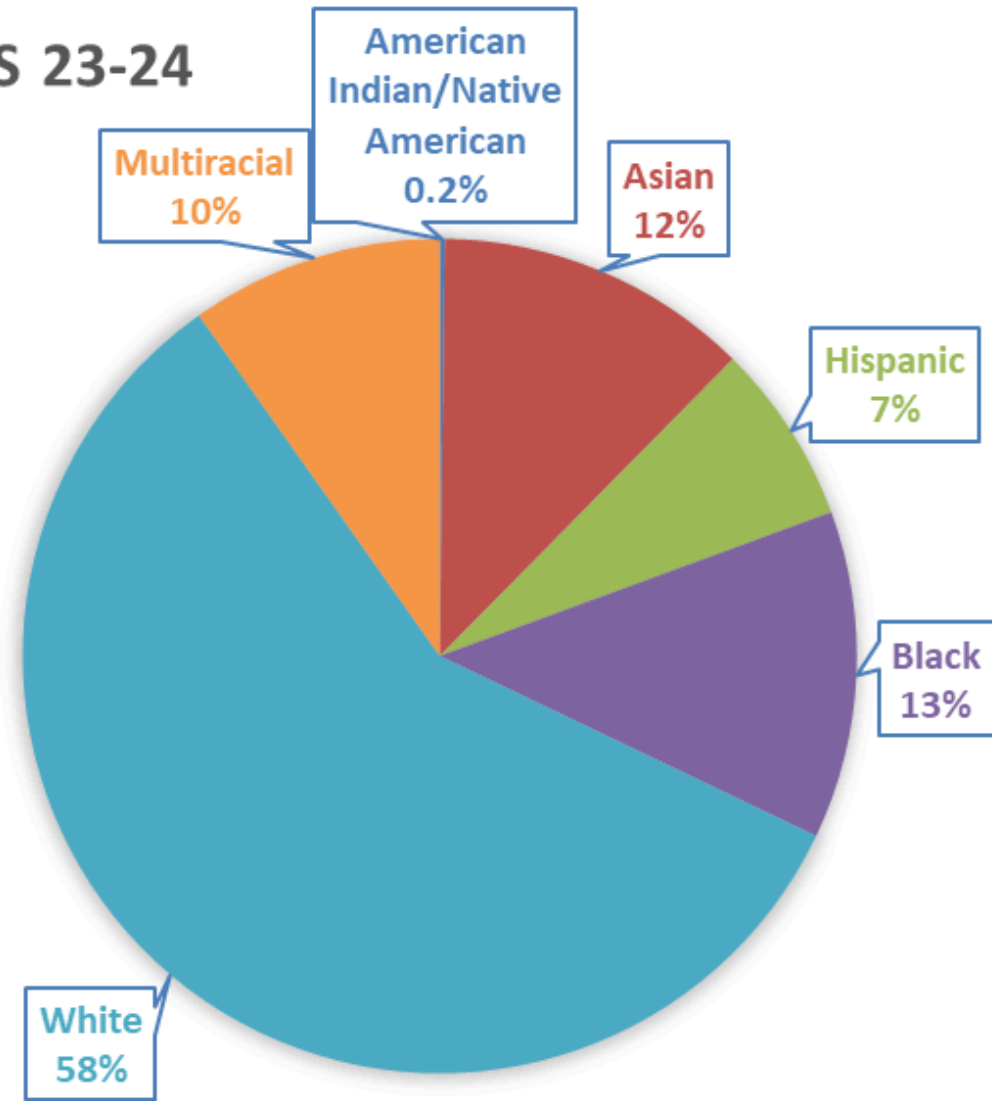


DISTRICT 23-24

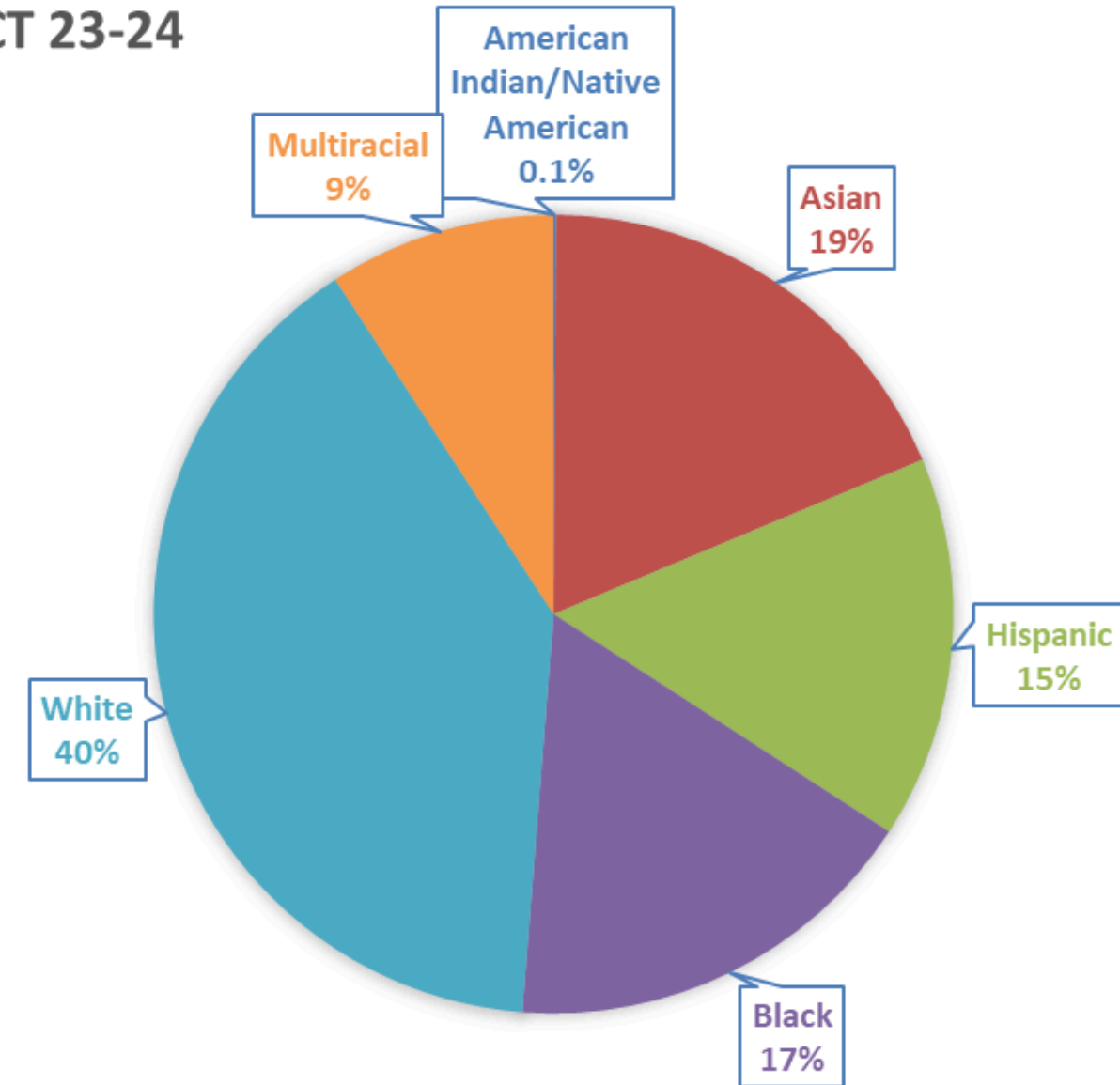


Activities: Athletics

ATHLETICS 23-24

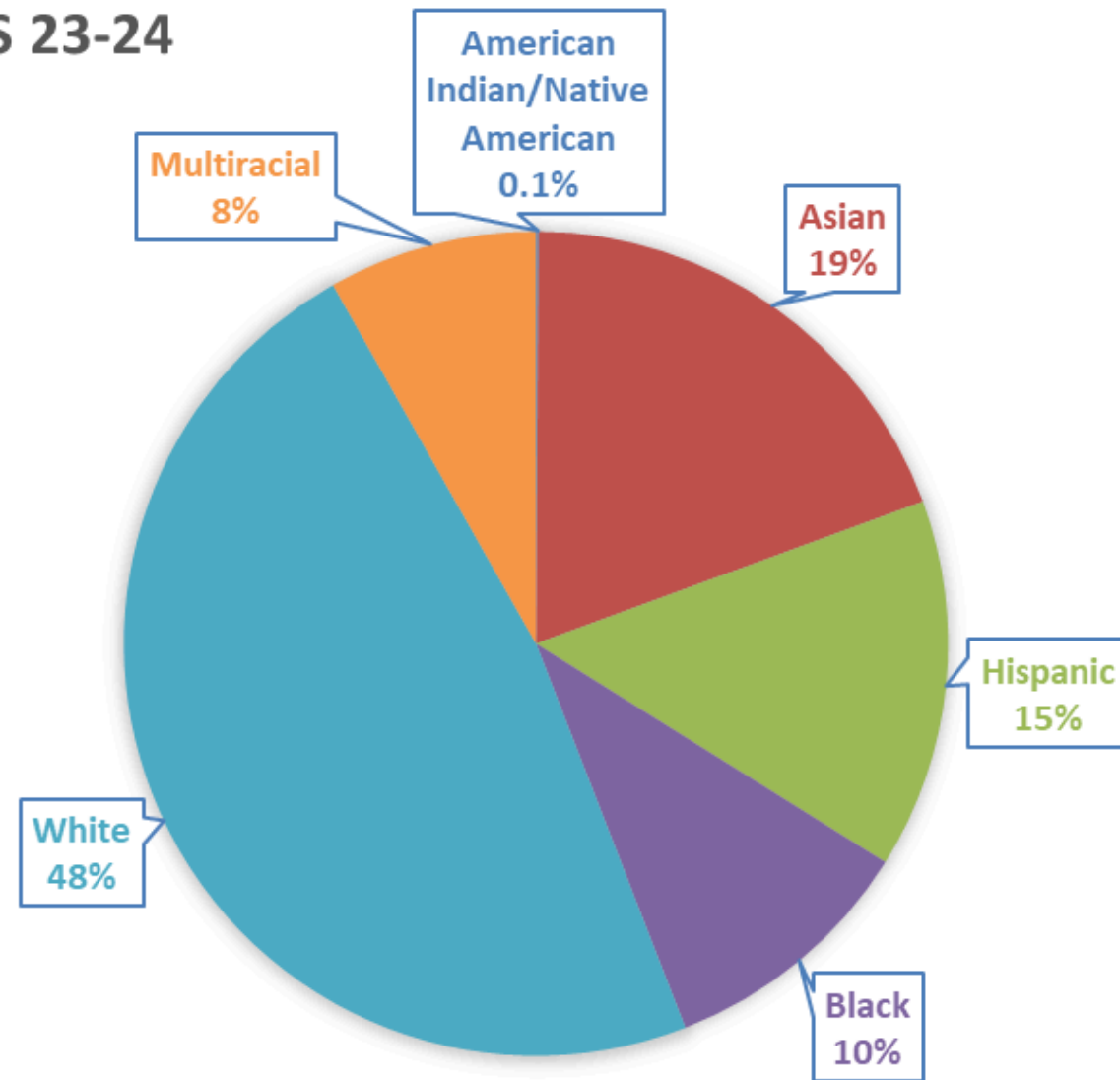


DISTRICT 23-24

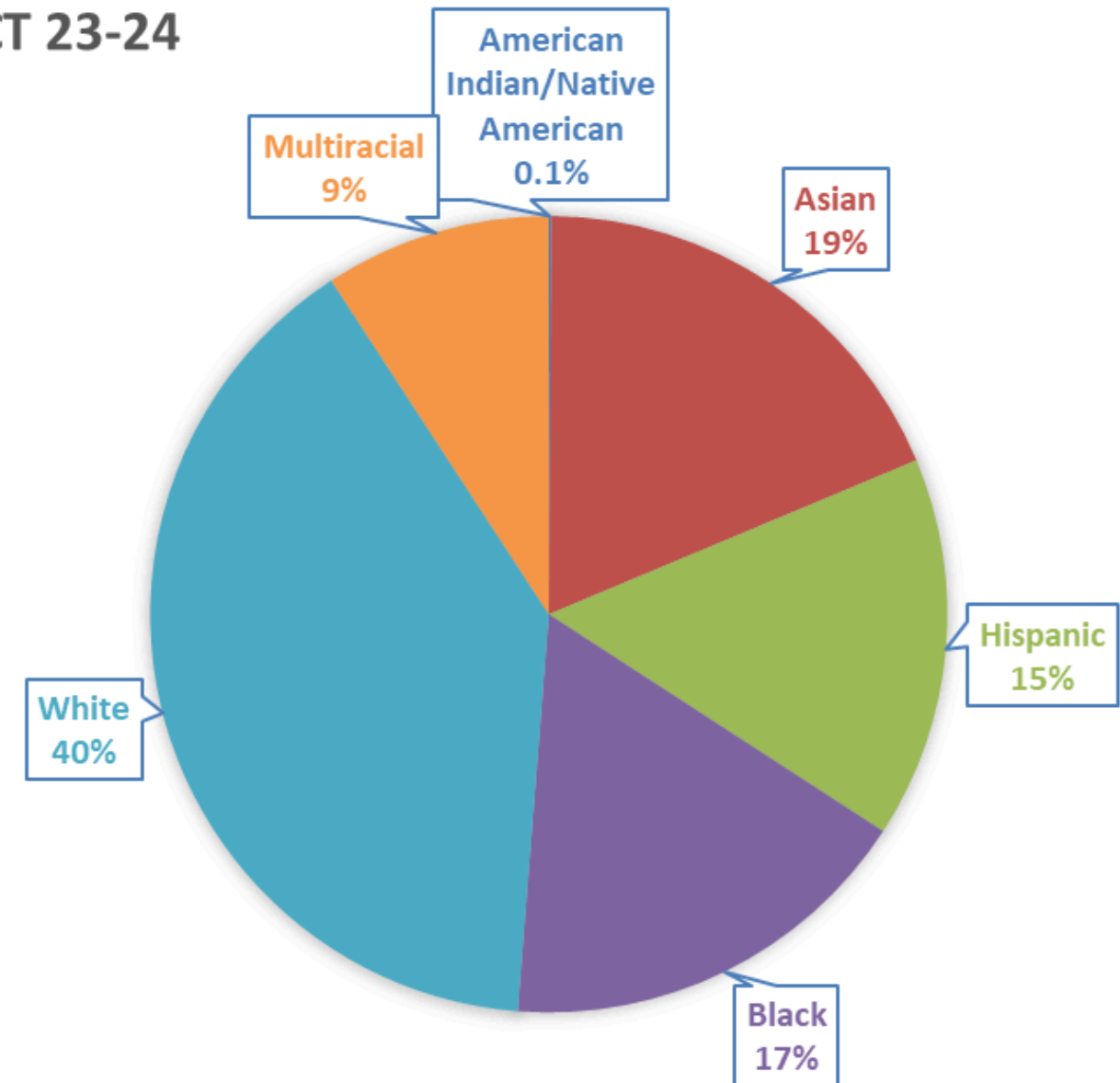


Activities: Clubs

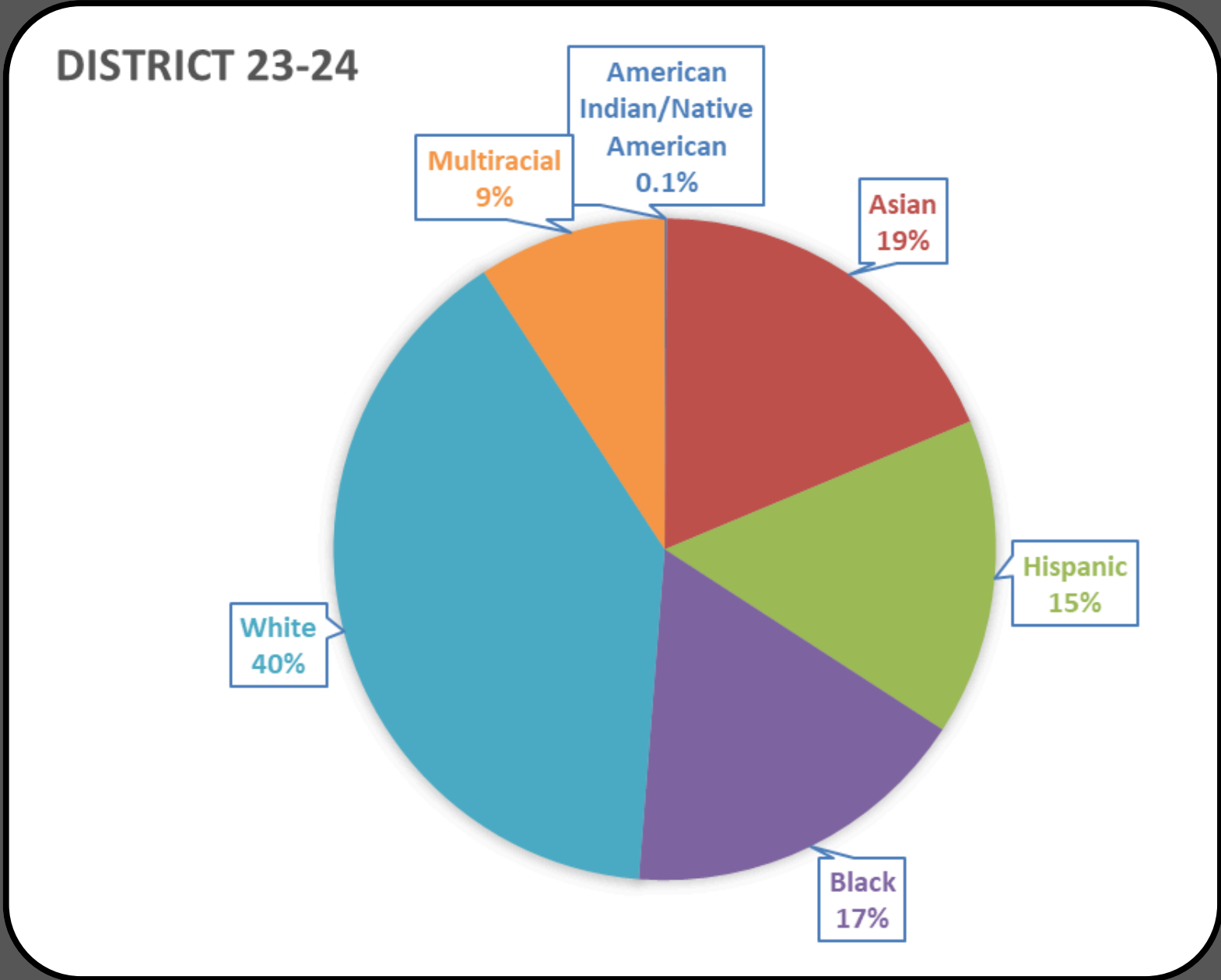
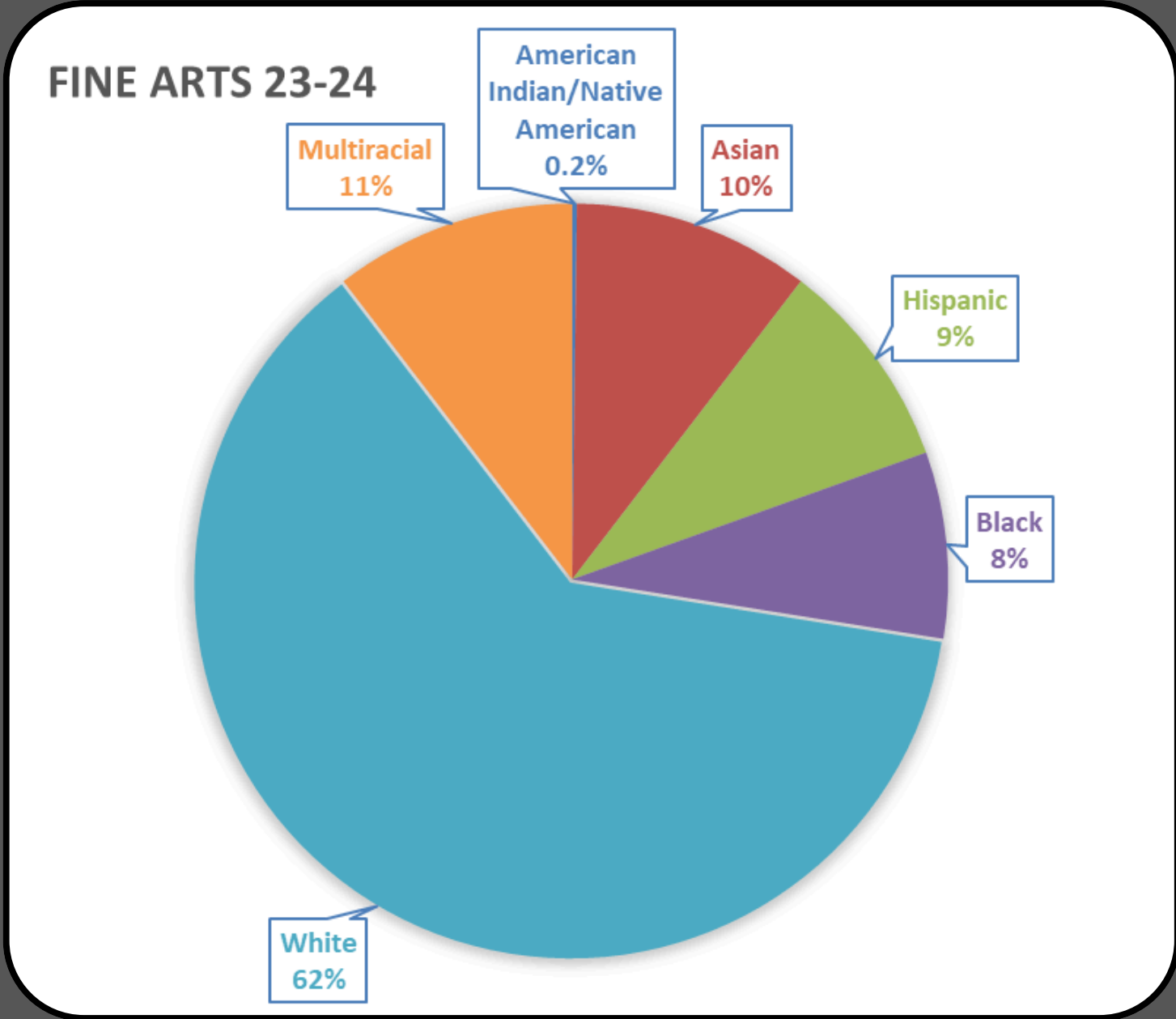
CLUBS 23-24

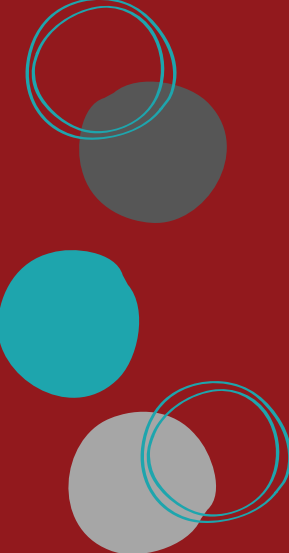


DISTRICT 23-24

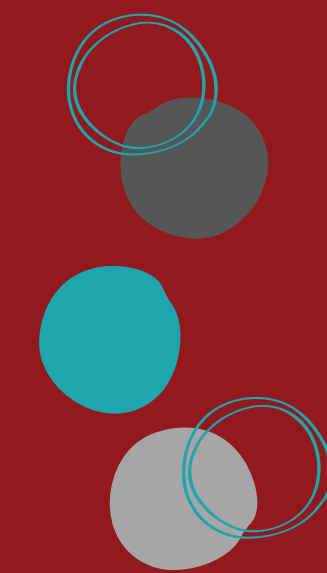


Activities: Fine Arts





Special Education





Initial Referrals

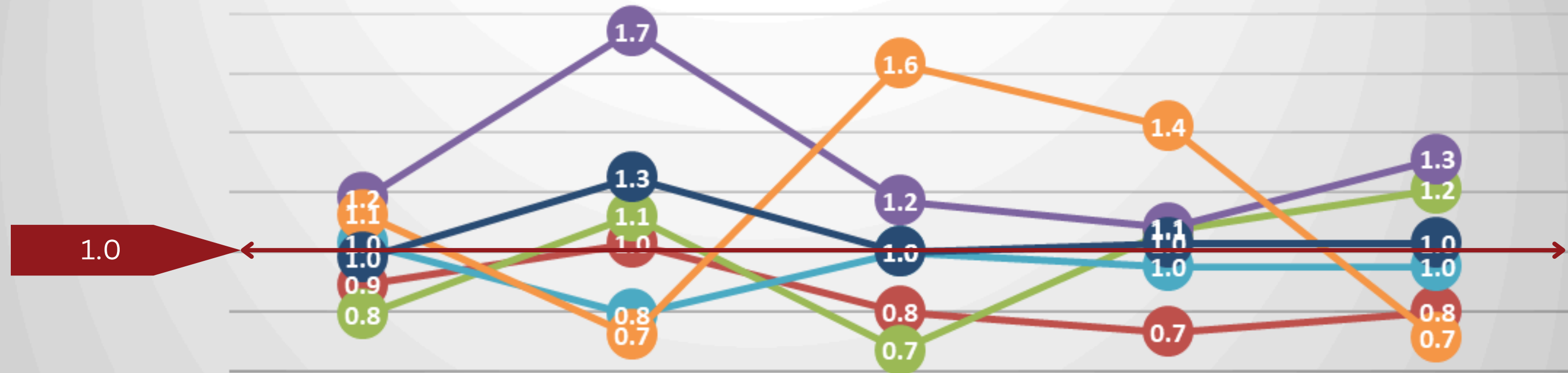
Met criteria to be evaluated for special education

- **May or may not qualify**

Data is monitored for over/under representation



Special Education Referrals Trend by Race/Ethnicity



	2019-20	2020-21	2021-22	2022-23	2023-24
American Indian					
Asian	0.9	1.0	0.8	0.7	0.8
Hispanic	0.8	1.1	0.7	1.1	1.2
Black	1.2	1.7	1.2	1.1	1.3
White	1.0	0.8	1.0	1.0	1.0
Multiracial	1.1	0.7	1.6	1.4	0.7
BIPOC	1.0	1.3	1.0	1.0	1.0



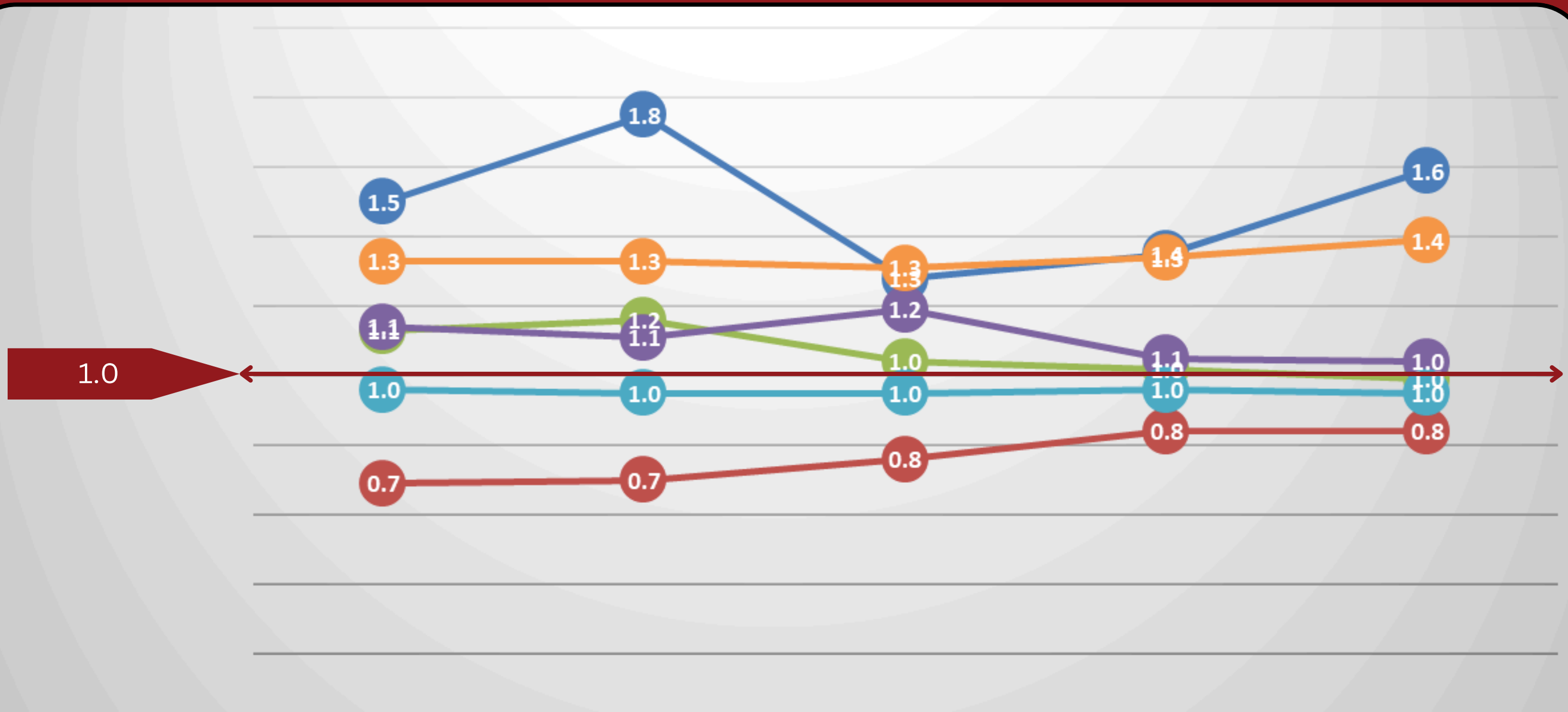
Students Served in Special Education

Students receiving special education instruction or services

Differ from referral slides as students have been referred, qualified for and currently served

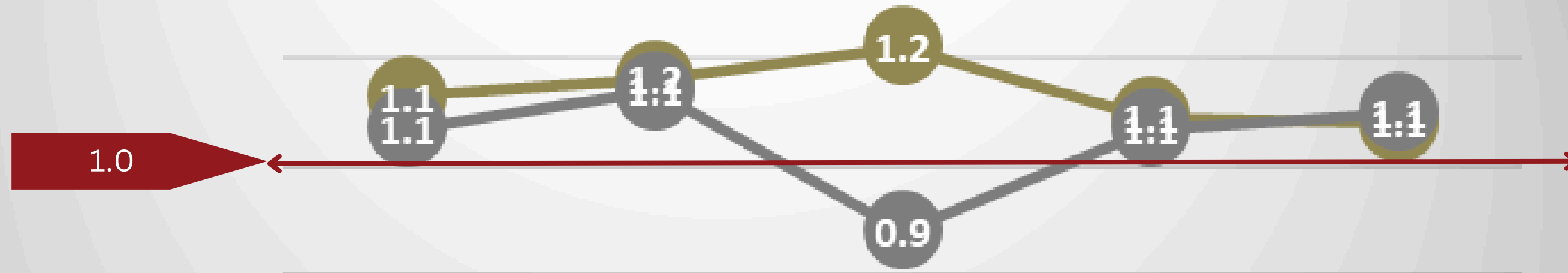


Special Education Trend by Race/Ethnicity



	2019-20	2020-21	2021-22	2022-23	2023-24
American Indian	1.5	1.8	1.3	1.4	1.6
Asian	0.7	0.7	0.8	0.8	0.8
Hispanic	1.1	1.2	1.0	1.0	1.0
Black	1.1	1.1	1.2	1.1	1.0
White	1.0	1.0	1.0	1.0	1.0
Multiracial	1.3	1.3	1.3	1.3	1.4

Special Education Trend by Student Groups



	2019-20	2020-21	2021-22	2022-23	2023-24
—●— MLL	1.1	1.2	1.2	1.1	1.1
—●— Ed. Benefits	1.1	1.1	0.9	1.1	1.1

District Response

- **AATD identification improvements**
- **AATD participation vs identification**
- **Comprehensive Needs Assessment for programs and activities**
- **Including more information from 7/8 activities:**
 - **Unity Center participation**
 - **More student affinity groups**
- **Data review and update for activities**
- **Student Assistance Teams process alignment (MTSS)**

Questions and Discussion

