

February 8, 2023

Mr. Phillip Francis  
Asst. Superintendent of District Services  
Livonia Public Schools  
15125 Farmington Road  
Livonia, MI 48154

RE: 2021 Bond Program  
LMC Furniture Purchase Recommendation  
Cleveland ES / Rosedale ES / Riley UES / Frost MS / Franklin HS

Dear Mr. Francis:

This letter transmits an update from Plante Moran Cresa (PMC) as it relates to the assignment to assist and advise Livonia Public Schools (LPS) in its purchase of furniture for the Project listed above. This update represents the mutual efforts of PMC, French Associates, and LPS administration and staff (the Team).

Coinciding with ongoing design efforts to renovate and reimagine LMC spaces as part of the 2021 Bond Program, the Team has conducted multiple meetings and site visits over the course of the past few months focused on the selection of furniture to best serve each space. Following a previous recommendation for the purchase of bookcases for these locations, the Team continued meetings with LPS staff to finalize design, select finishes and review samples for the remaining furniture at the 2023 sites.

The Team recommends awarding **NBS Commercial Interiors** to supply and install LMC furniture in an amount not-to-exceed **\$926,000.00** as further detailed below and within French's recommendation documents dated February 1, 2023.

Cleveland Elementary:	\$111,453.61
Rosedale Elementary:	\$113,840.24
Riley Upper Elementary:	\$144,221.87
Frost Middle:	\$171,844.88
Franklin High:	\$340,554.25
<hr/>	
NBS Quotation:	\$881,914.85
Contingency (5%):	\$44,085.15
<hr/>	
<b>Award Recommendation (NTE):</b>	<b>\$926,000.00</b>

For the Vendor, the pricing for this work will be detailed in a Purchase Order Agreement, pending final review and approval of terms by district legal counsel.

The Team is available at the Board's convenience to answer any questions regarding this recommendation. Please direct all questions through me via email at [brian.weber@plantemoran.com](mailto:brian.weber@plantemoran.com).

Sincerely,

PLANTE MORAN CRESA



Brian Weber  
Vice President

Enclosures:    French Associates Recommendation Letter  
                  Vendor Proposals  
                  Product Information & Layout



architects planners interiors

236 Mill Street  
Rochester, MI  
48307

February 1<sup>st</sup>, 2023

Phillip Francis  
Asst. Superintendent of District Services  
Livonia Public Schools

**Subject: 2021 Bond Program – 2023 Renovations  
Media Center Furniture Balance**

Dear Mr. Francis,

French Associates has been consulting with NBS Commercial Interiors in the development and programming of furniture for the 2021 Bond Program projects. Throughout the design process, NBS has aided in product selections, availability, and lead times.

On January 25<sup>th</sup>, 2023 French Associates received furniture quotes from NBS Commercial Interiors for the balance of furniture remaining for Cleveland Elementary, Rosedale Elementary, Frost Middle School, Riley Upper Elementary and Franklin High School.

Enclosed are the furniture quotes that utilize the E&I, Omnia, TIPS and NCPA consortium group pricing. The totals for these projects are as follows:

Cleveland Elementary: \$111,453.61  
Rosedale Elementary: \$113,840.24  
Riley Upper Elementary: \$144,221.87  
Frost Middle School: \$171,844.88  
Franklin High School: \$340,554.25

**French Associates is recommending award to NBS Commercial Interiors for the procurement and installation of furniture in the Media Centers at all schools listed above in the total amount of \$881,914.85.**

Please contact me if you have any questions.

Sincerely,

Jessica Walter  
Interior Designer

DATE: \_\_\_\_\_  
APPROVED BY: \_\_\_\_\_  
DATE: \_\_\_\_\_

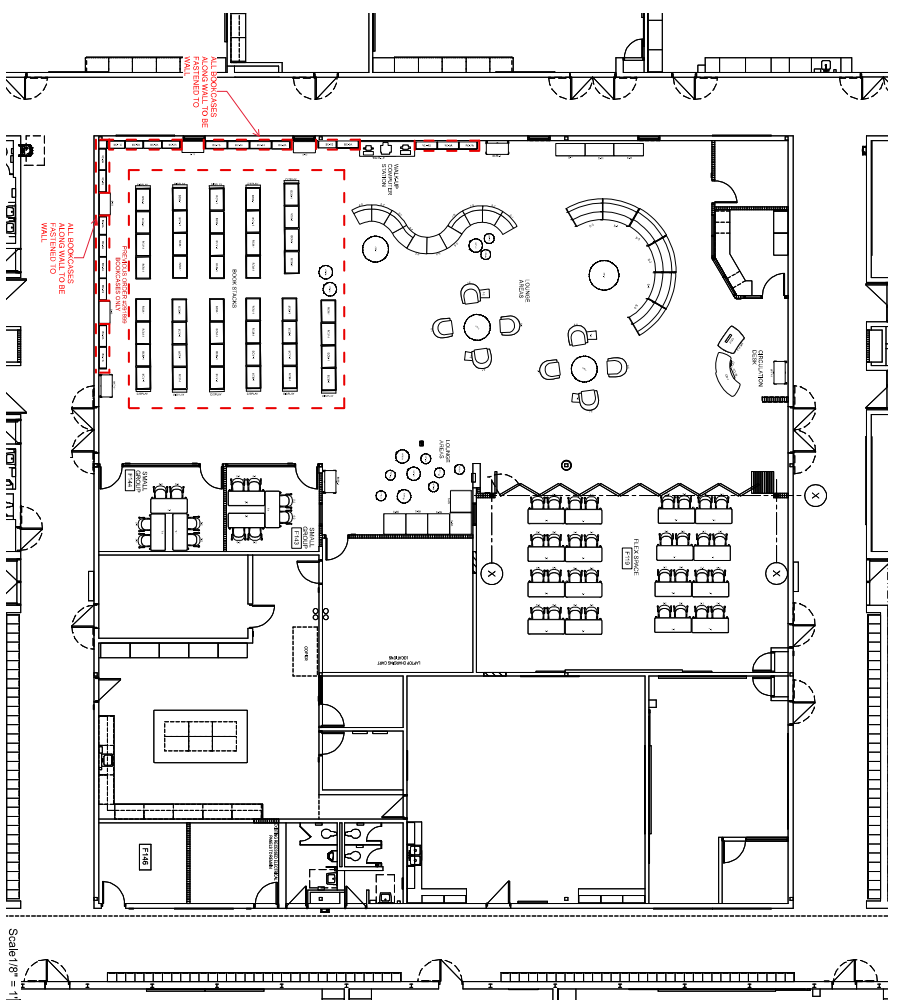
APPROVED  APPROVED AS NOTED  
07/29/22 PROGRESS  
08/09/22 BUDGET LABOR  
10/27/22 REVISIONS  
12/16/22 AUDIT  
1/27/23 REVISED AUDIT

OWNER: **Livonia Public Schools**  
PROJECT: **RILEY UPPER EL. - MEDIA CENTER RENOVATION**  
1555 RIVERVIEW PARK RD.,  
LIVONIA, MI

PROJECT LEADER: 221118  
DESIGNER: GIBBERN, TIBB  
ACCOUNT MANAGER: M. SINGH  
DESIGNER: S. WAZIRI  
PROJECT MANAGER: M. GIBBERN  
DRAWING NO:

**COMPONENT PLAN**

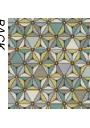
DRAWING NUMBER: **ID-3.1**



Scale: 1/8" = 1'



(S-1) JENNY ROUND



BACK



SEAT

PERSONAL TABLE



(S-3,4,5,6) ERG BRIGHTON STEPS



(S-4) STEPS/SIDES



(S-9) STEPS/SIDES (S-9) SIDES ONLY



(OTT-1&2) NATIONAL WHIMS V/ LAM TOP



(OTT-1) BASE



(OTT-2) BASE



(OTT-3&4) NATIONAL WHIMS V



(OTT-3&4A) LAM TOP



(OTT-3&4B) (OTT-3&4C)



(7-1) SMITH SYSTEM - ELEMENTAL



LAM TOP



LEGS-PLATINUM



(S-2) AND BXB'S CHAIR



BACK-STEERING



SEAT-PLATINUM LEGS-PLATINUM



(CD-1) NOMAD DESK



LAM TOP



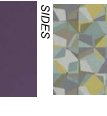
VERTICAL LAM



(BKTK-1) BOOK



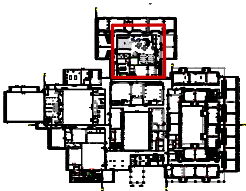
(S-11) MEDIA TECH NEST



SIDES



SEAT VERTICAL LAM



KEY PLAN

**REVISIONS**  
**REVISED AUDIT Q#357573**

**PROJECT:** Livonia Public Schools  
**PROJECT:** FRANKLIN HS - RENOVATION

**CLIENT:** Livonia Public Schools  
**PROJECT MANAGER:** M. BISHOP  
**DESIGNER:** M. BISHOP  
**PROJECT MANAGER:** M. BISHOP

**DATE:** 08/20/24

**REVISIONS:**

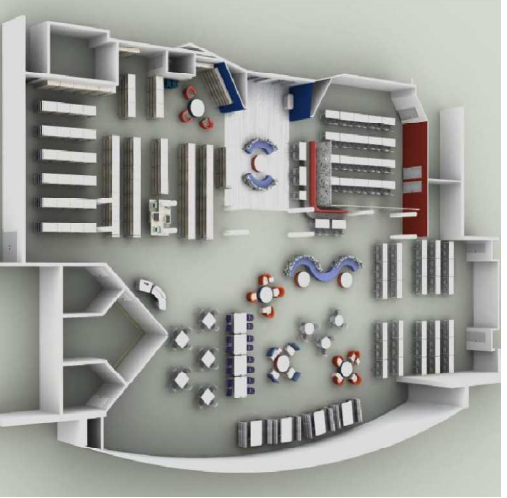
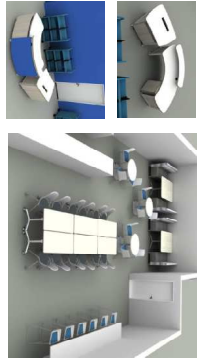
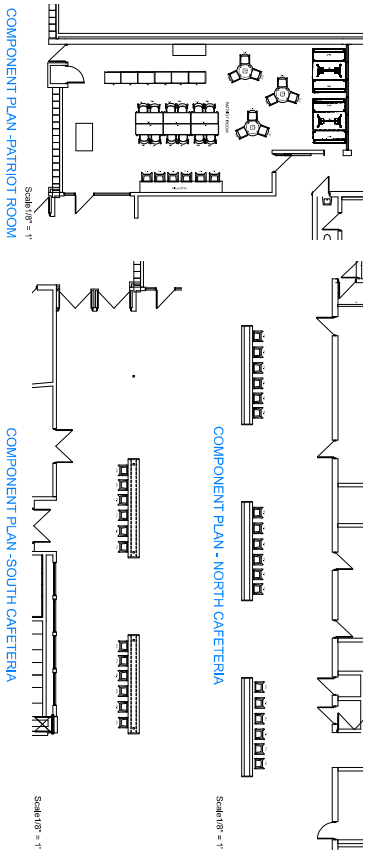
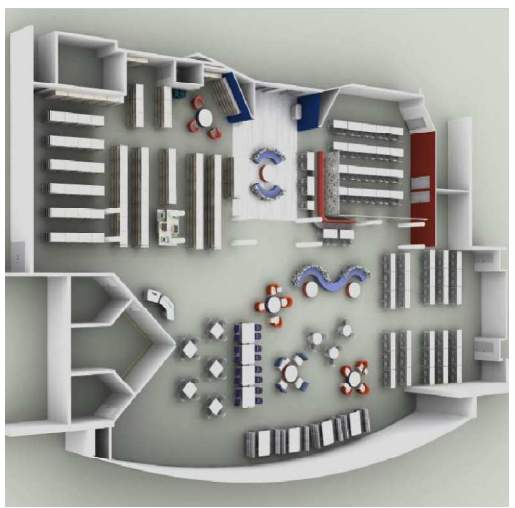
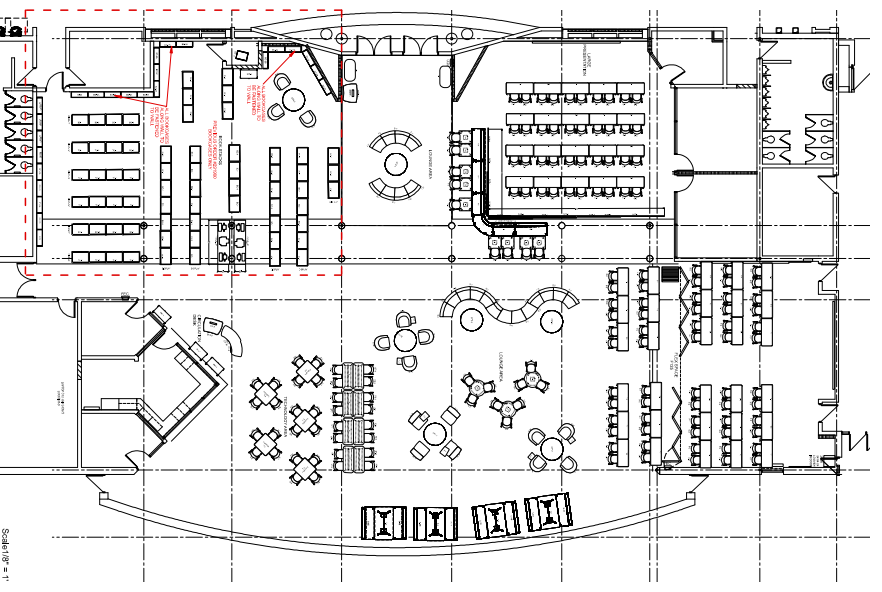
NO.	DATE	DESCRIPTION
1	08/20/24	ISSUED FOR RFP
2	09/05/24	ISSUED FOR BID
3	09/10/24	REVISIONS
4	09/15/24	REVISIONS
5	09/20/24	REVISIONS
6	09/25/24	REVISIONS
7	10/05/24	REVISIONS
8	10/15/24	REVISIONS
9	10/25/24	REVISIONS
10	11/05/24	REVISIONS
11	11/15/24	REVISIONS
12	11/25/24	REVISIONS
13	12/05/24	REVISIONS
14	12/15/24	REVISIONS
15	12/25/24	REVISIONS

**KEY:**  ASSEMBLY  CONTRACTOR ORIENTED

**TO/ISSUE:** A401

**DATE:** 08/20/24

**PROJECT MANAGER:** M. BISHOP



- (F-2) ELBROOK ROUND  
TOPS: ASH WENGÉ  
BASE: PLATINUM METALLIC
- (F-3) ELEMENTAL FINEST  
TOPS: CLASSIC LAMIN EDGE CHERRY WENGÉ  
BASE: PLATINUM
- (F-5) FLEX WORK TABLE  
TOPS: ASH WENGÉ  
BASE: PLATINUM METALLIC
- (S-10) MONTANA CHAIR  
SEAT: STINSON MOCASIN SHEL  
BACK: WHITE OAK
- (S-12) SCOOP STOOL  
SEAT: STINSON MOCASIN SHEL  
SMELL: WHITE
- (S-1A) JENNY ROUND  
BACK: STINSON AVALI PEPPIA
- (S-1N) JENNY NO ARMS  
SEAT: STINSON MOCASIN SHEL
- (S-4A) PRINCE  
S-4A BACK: CROSS BRICK  
S-4A SEAT: CROSS BRICK  
S-4A BASE: EXCLUSION STONE
- (S-4B) PRINCE LOUNGE  
S-4B BACK: CROSS BRICK  
S-4B SEAT: CROSS BRICK  
S-4B BASE: EXCLUSION STONE
- (S-7.1.8) ERS RAVEN  
BACK: STINSON POCOSW MARWALA
- (S-7.1.8) ERS RAVEN  
SEAT: STINSON CORE 2.0 BLUBERRY
- (S-7.1.8) ERS RAVEN  
TOPS: WHITE NERBA
- (S-7.1.8) ERS RAVEN  
OTTOMAN: BASE STINSON MOCASIN SHEL
- (S-7.1.8) ERS RAVEN  
OTTOMAN: BASE STINSON AVALI PEPPIA
- (S-4) VICARIE COMMON BENCH  
ATT: ATWC
- (C-2.1.2.3) CINC DISK  
TOPS: VERTICAL-GRAINED OAK

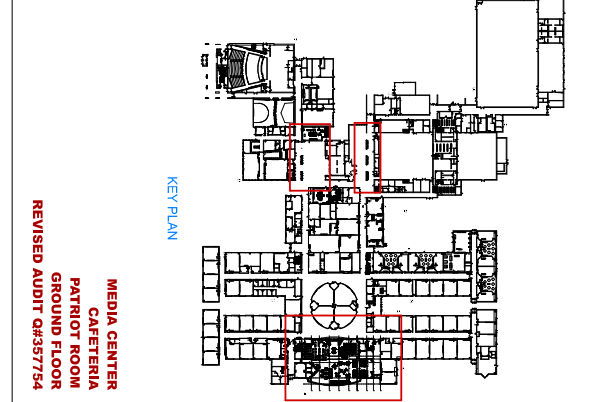
- (F-3) ELBROOK ROUND  
TOPS: ASH WENGÉ  
BASE: PLATINUM METALLIC
- (F-5) FLEX WORK TABLE  
TOPS: ASH WENGÉ  
BASE: PLATINUM METALLIC
- (S-10) MONTANA CHAIR  
SEAT: STINSON MOCASIN SHEL  
BACK: WHITE OAK
- (S-12) SCOOP STOOL  
SEAT: STINSON MOCASIN SHEL  
SMELL: WHITE
- (S-1A) JENNY ROUND  
BACK: STINSON AVALI PEPPIA
- (S-1N) JENNY NO ARMS  
SEAT: STINSON MOCASIN SHEL
- (S-4A) PRINCE  
S-4A BACK: CROSS BRICK  
S-4A SEAT: CROSS BRICK  
S-4A BASE: EXCLUSION STONE
- (S-4B) PRINCE LOUNGE  
S-4B BACK: CROSS BRICK  
S-4B SEAT: CROSS BRICK  
S-4B BASE: EXCLUSION STONE
- (S-7.1.8) ERS RAVEN  
BACK: STINSON POCOSW MARWALA
- (S-7.1.8) ERS RAVEN  
SEAT: STINSON CORE 2.0 BLUBERRY
- (S-7.1.8) ERS RAVEN  
TOPS: WHITE NERBA
- (S-7.1.8) ERS RAVEN  
OTTOMAN: BASE STINSON MOCASIN SHEL
- (S-7.1.8) ERS RAVEN  
OTTOMAN: BASE STINSON AVALI PEPPIA
- (S-4) VICARIE COMMON BENCH  
ATT: ATWC
- (C-2.1.2.3) CINC DISK  
TOPS: VERTICAL-GRAINED OAK

- (F-2) ELBROOK ROUND  
TOPS: ASH WENGÉ  
BASE: PLATINUM METALLIC
- (F-3) ELEMENTAL FINEST  
TOPS: CLASSIC LAMIN EDGE CHERRY WENGÉ  
BASE: PLATINUM
- (F-5) FLEX WORK TABLE  
TOPS: ASH WENGÉ  
BASE: PLATINUM METALLIC
- (S-10) MONTANA CHAIR  
SEAT: STINSON MOCASIN SHEL  
BACK: WHITE OAK
- (S-12) SCOOP STOOL  
SEAT: STINSON MOCASIN SHEL  
SMELL: WHITE
- (S-1A) JENNY ROUND  
BACK: STINSON AVALI PEPPIA
- (S-1N) JENNY NO ARMS  
SEAT: STINSON MOCASIN SHEL
- (S-4A) PRINCE  
S-4A BACK: CROSS BRICK  
S-4A SEAT: CROSS BRICK  
S-4A BASE: EXCLUSION STONE
- (S-4B) PRINCE LOUNGE  
S-4B BACK: CROSS BRICK  
S-4B SEAT: CROSS BRICK  
S-4B BASE: EXCLUSION STONE
- (S-7.1.8) ERS RAVEN  
BACK: STINSON POCOSW MARWALA
- (S-7.1.8) ERS RAVEN  
SEAT: STINSON CORE 2.0 BLUBERRY
- (S-7.1.8) ERS RAVEN  
TOPS: WHITE NERBA
- (S-7.1.8) ERS RAVEN  
OTTOMAN: BASE STINSON MOCASIN SHEL
- (S-7.1.8) ERS RAVEN  
OTTOMAN: BASE STINSON AVALI PEPPIA
- (S-4) VICARIE COMMON BENCH  
ATT: ATWC
- (C-2.1.2.3) CINC DISK  
TOPS: VERTICAL-GRAINED OAK

- (F-2) ELBROOK ROUND  
TOPS: ASH WENGÉ  
BASE: PLATINUM METALLIC
- (F-3) ELEMENTAL FINEST  
TOPS: CLASSIC LAMIN EDGE CHERRY WENGÉ  
BASE: PLATINUM
- (F-5) FLEX WORK TABLE  
TOPS: ASH WENGÉ  
BASE: PLATINUM METALLIC
- (S-10) MONTANA CHAIR  
SEAT: STINSON MOCASIN SHEL  
BACK: WHITE OAK
- (S-12) SCOOP STOOL  
SEAT: STINSON MOCASIN SHEL  
SMELL: WHITE
- (S-1A) JENNY ROUND  
BACK: STINSON AVALI PEPPIA
- (S-1N) JENNY NO ARMS  
SEAT: STINSON MOCASIN SHEL
- (S-4A) PRINCE  
S-4A BACK: CROSS BRICK  
S-4A SEAT: CROSS BRICK  
S-4A BASE: EXCLUSION STONE
- (S-4B) PRINCE LOUNGE  
S-4B BACK: CROSS BRICK  
S-4B SEAT: CROSS BRICK  
S-4B BASE: EXCLUSION STONE
- (S-7.1.8) ERS RAVEN  
BACK: STINSON POCOSW MARWALA
- (S-7.1.8) ERS RAVEN  
SEAT: STINSON CORE 2.0 BLUBERRY
- (S-7.1.8) ERS RAVEN  
TOPS: WHITE NERBA
- (S-7.1.8) ERS RAVEN  
OTTOMAN: BASE STINSON MOCASIN SHEL
- (S-7.1.8) ERS RAVEN  
OTTOMAN: BASE STINSON AVALI PEPPIA
- (S-4) VICARIE COMMON BENCH  
ATT: ATWC
- (C-2.1.2.3) CINC DISK  
TOPS: VERTICAL-GRAINED OAK

- (F-2) ELBROOK ROUND  
TOPS: ASH WENGÉ  
BASE: PLATINUM METALLIC
- (F-3) ELEMENTAL FINEST  
TOPS: CLASSIC LAMIN EDGE CHERRY WENGÉ  
BASE: PLATINUM
- (F-5) FLEX WORK TABLE  
TOPS: ASH WENGÉ  
BASE: PLATINUM METALLIC
- (S-10) MONTANA CHAIR  
SEAT: STINSON MOCASIN SHEL  
BACK: WHITE OAK
- (S-12) SCOOP STOOL  
SEAT: STINSON MOCASIN SHEL  
SMELL: WHITE
- (S-1A) JENNY ROUND  
BACK: STINSON AVALI PEPPIA
- (S-1N) JENNY NO ARMS  
SEAT: STINSON MOCASIN SHEL
- (S-4A) PRINCE  
S-4A BACK: CROSS BRICK  
S-4A SEAT: CROSS BRICK  
S-4A BASE: EXCLUSION STONE
- (S-4B) PRINCE LOUNGE  
S-4B BACK: CROSS BRICK  
S-4B SEAT: CROSS BRICK  
S-4B BASE: EXCLUSION STONE
- (S-7.1.8) ERS RAVEN  
BACK: STINSON POCOSW MARWALA
- (S-7.1.8) ERS RAVEN  
SEAT: STINSON CORE 2.0 BLUBERRY
- (S-7.1.8) ERS RAVEN  
TOPS: WHITE NERBA
- (S-7.1.8) ERS RAVEN  
OTTOMAN: BASE STINSON MOCASIN SHEL
- (S-7.1.8) ERS RAVEN  
OTTOMAN: BASE STINSON AVALI PEPPIA
- (S-4) VICARIE COMMON BENCH  
ATT: ATWC
- (C-2.1.2.3) CINC DISK  
TOPS: VERTICAL-GRAINED OAK

- (F-2) ELBROOK ROUND  
TOPS: ASH WENGÉ  
BASE: PLATINUM METALLIC
- (F-3) ELEMENTAL FINEST  
TOPS: CLASSIC LAMIN EDGE CHERRY WENGÉ  
BASE: PLATINUM
- (F-5) FLEX WORK TABLE  
TOPS: ASH WENGÉ  
BASE: PLATINUM METALLIC
- (S-10) MONTANA CHAIR  
SEAT: STINSON MOCASIN SHEL  
BACK: WHITE OAK
- (S-12) SCOOP STOOL  
SEAT: STINSON MOCASIN SHEL  
SMELL: WHITE
- (S-1A) JENNY ROUND  
BACK: STINSON AVALI PEPPIA
- (S-1N) JENNY NO ARMS  
SEAT: STINSON MOCASIN SHEL
- (S-4A) PRINCE  
S-4A BACK: CROSS BRICK  
S-4A SEAT: CROSS BRICK  
S-4A BASE: EXCLUSION STONE
- (S-4B) PRINCE LOUNGE  
S-4B BACK: CROSS BRICK  
S-4B SEAT: CROSS BRICK  
S-4B BASE: EXCLUSION STONE
- (S-7.1.8) ERS RAVEN  
BACK: STINSON POCOSW MARWALA
- (S-7.1.8) ERS RAVEN  
SEAT: STINSON CORE 2.0 BLUBERRY
- (S-7.1.8) ERS RAVEN  
TOPS: WHITE NERBA
- (S-7.1.8) ERS RAVEN  
OTTOMAN: BASE STINSON MOCASIN SHEL
- (S-7.1.8) ERS RAVEN  
OTTOMAN: BASE STINSON AVALI PEPPIA
- (S-4) VICARIE COMMON BENCH  
ATT: ATWC
- (C-2.1.2.3) CINC DISK  
TOPS: VERTICAL-GRAINED OAK



DATE: \_\_\_\_\_  
APPROVED BY: \_\_\_\_\_  
DATE: \_\_\_\_\_

<input type="checkbox"/> APPROVED	<input type="checkbox"/> APPROVED AS NOTED
07/29/22	PROGRESS
08/09/22	BUDGET LABOR
10/27/22	REVISIONS
12/18/22	AUDIT
01/24/23	REVISED AUDIT

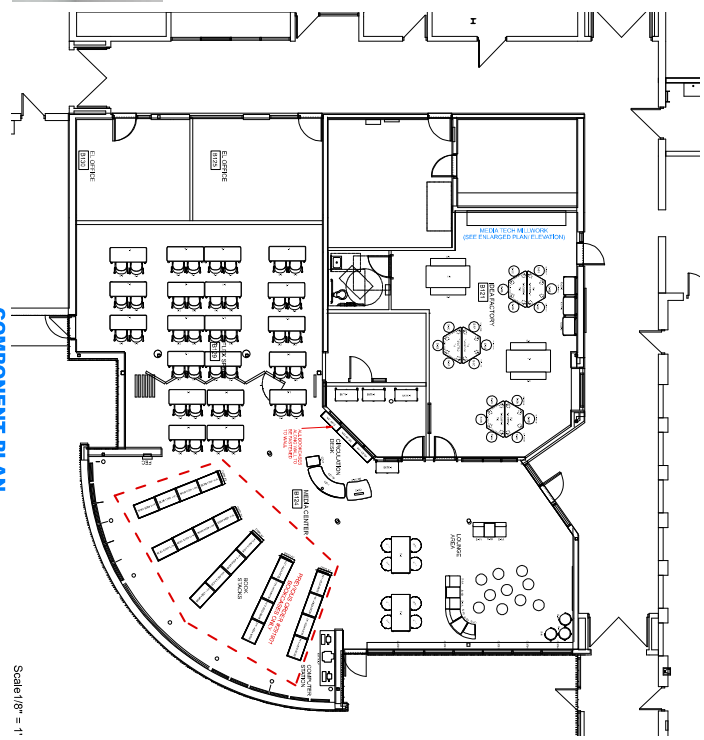
OWNER:  
**LIVONIA PUBLIC SCHOOLS**

PROJECT:  
**ROSEDALE EL - MEDIA CENTER RENOVATION**

SPEC NAME AND/OR TYPICAL SYMBOL, ALL

PROJECT FOLDER	221118
DESIGNER	NBS
ACCOUNT MANAGER	M. BONDAN
DRAWING	S. WAZZANI
PROJECT MANAGER	M. GARDEN

COMPONENT NUMBER:  
**ID-3.1**



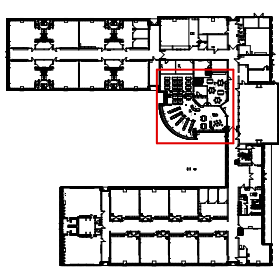
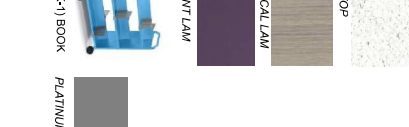
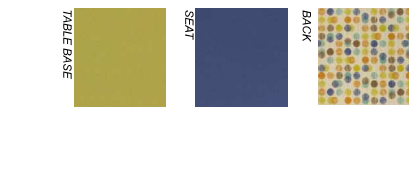
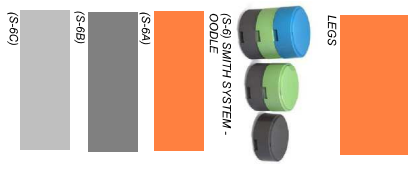
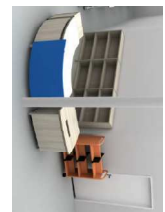
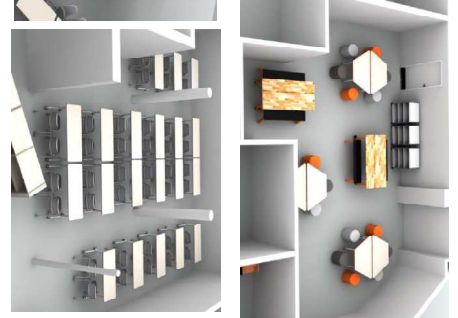
**COMPONENT PLAN**

Scale: 1/8" = 1'



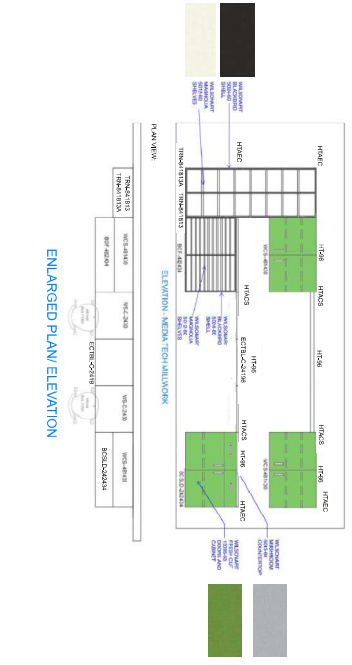
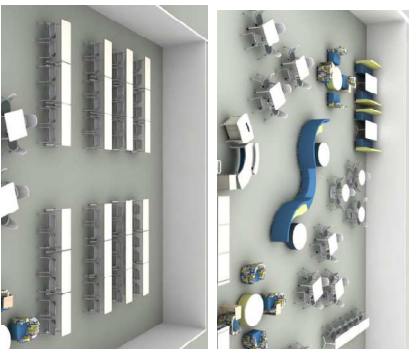
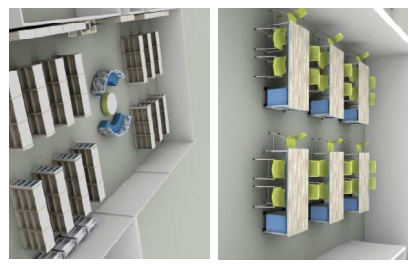
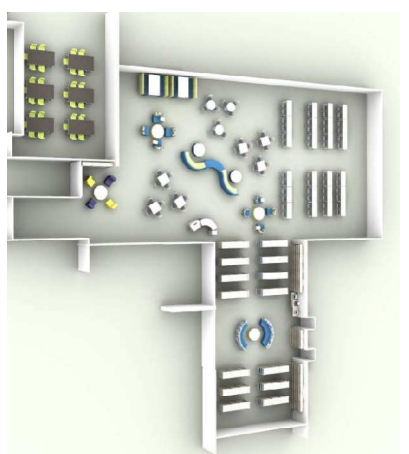
**ENLARGED PLAN/ ELEVATION**

Scale: 1:118

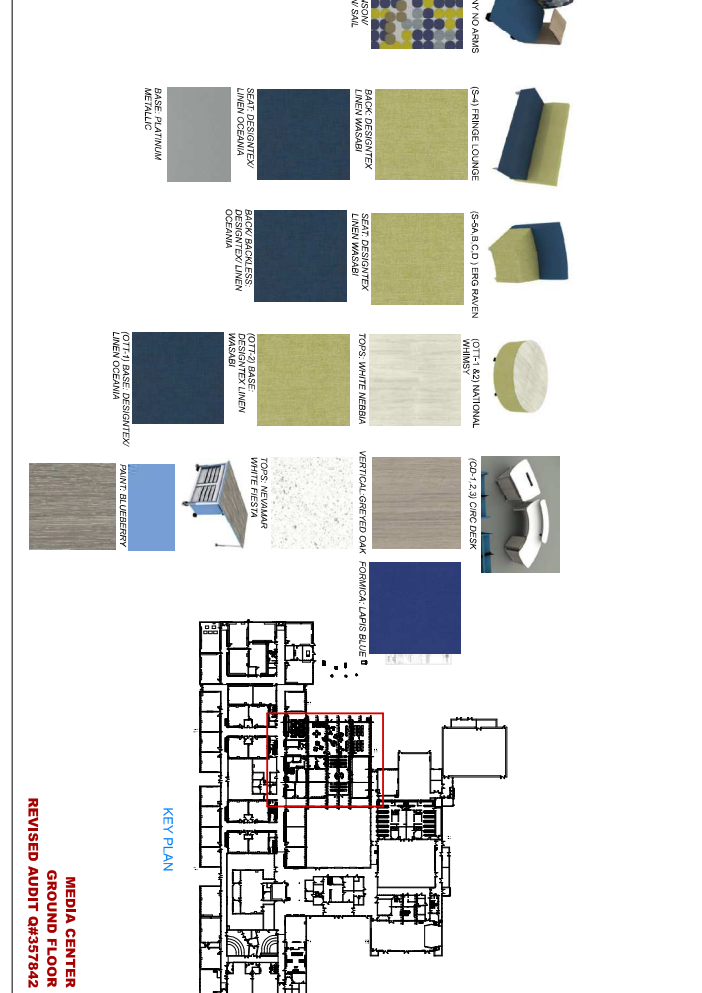


**KEY PLAN**

**MEDIA CENTER B124  
GROUND FLOOR  
QUOTE #357813**



- (T-2) ELIMROCK ROUND  
TOPS: ASH WENGÉ  
BASE: PLATINUM METALLIC
- (T-4) ELEMENTAL SQUARE  
TOPS: ELEMANTAL FLIPMIST  
LINES: EDGE CHAMFERING  
BASE: PLATINUM LESS PLATINUM
- (T-3) NATIONAL FOOTINGS  
TOPS: WHITE WENSA  
BASE: PLATINUM METALLIC
- (ST-1) LUMIN STOOL  
SHELL: APPLE  
LEGS: PLATINUM
- (S-3) A & B POUFOIRE - ROCK ROLLER  
DESIGNTEX LITTLE DOT SWAPRUSE
- (S-7) A1 JERRY ROUND  
BACK: STINSON AVANT PAPERKA
- (S-18) JERRY NO ARMS  
SEAT: STINSON MOCCASIN SAIL
- (S-1) FRINGE LOUNGE  
BACK: DESIGNTEX LEMN WASKRI  
SEAT: DESIGNTEX LEMN OCEANIA
- (S-4) B C D 1 ERG BAKEN WHISKEY  
SEAT: DESIGNTEX LEMN WASKRI  
BACK: DESIGNTEX LEMN OCEANIA
- (O-T-1) K21 NATIONAL WHISKEY  
TOPS: WHITE WENSA
- (O-T-2) GIVE DESK  
TOPS: WHITE WENSA  
VERTICAL: GREYED OAK  
FORMICA: LENS BLUE



**MEDIA CENTER GROUND FLOOR**  
REVISED AUDIT Q#357842

**PROJECT INFORMATION**

PROJECT NAME	LIVONIA PUBLIC SCHOOLS
PROJECT NUMBER	10000000000000000000
CLIENT NAME	MR. BROWN
CLIENT ADDRESS	10000000000000000000
PROJECT MANAGER	MR. BROWN

**COMPONENT PLAN**

**ID-3.1**

APPROVED	APPROVED AS NOTED
07/29/22	PROGRESS
08/09/22	BUDGET LABOR
10/27/22	REVISIONS
12/17/22	AUDIT
1/24/23	REVISED AUDIT
APPROVED BY:	DATE:

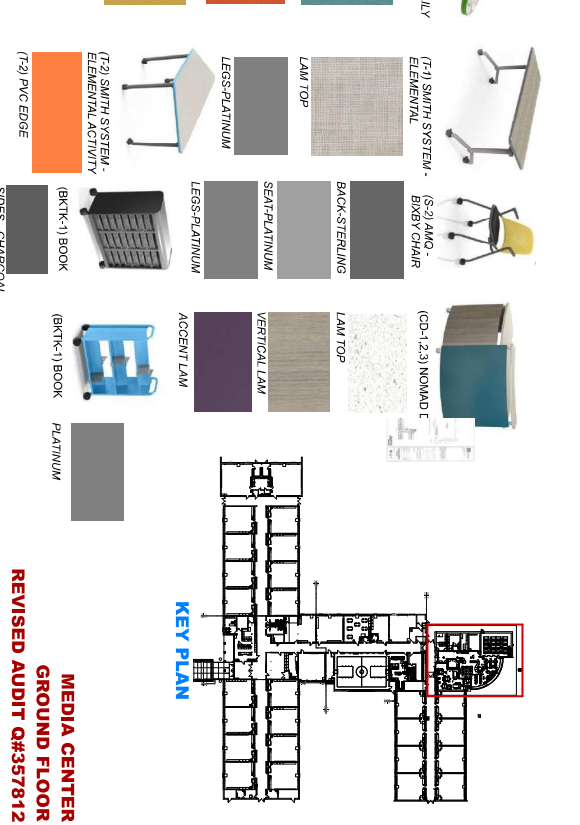
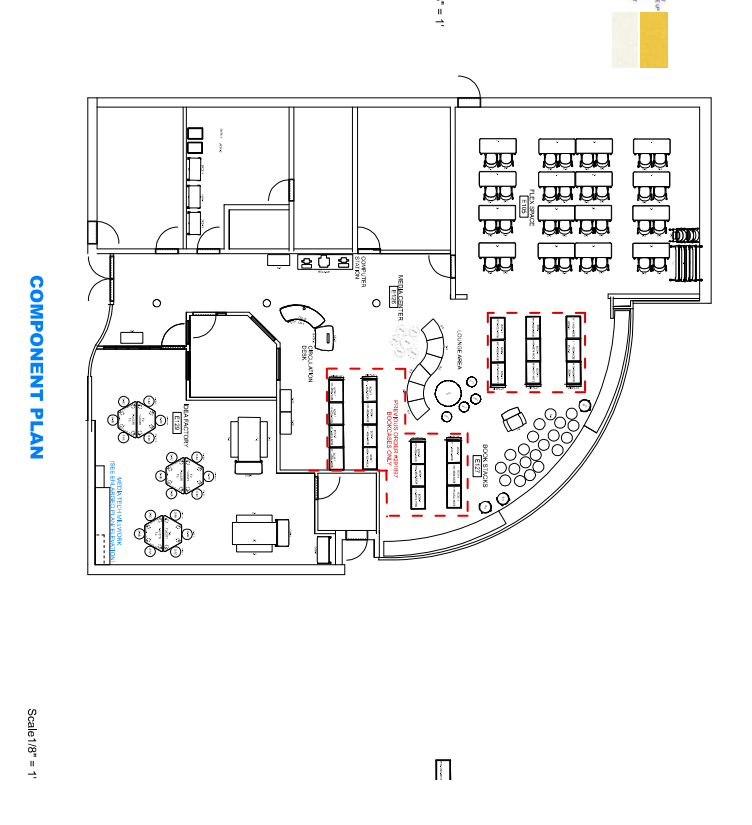
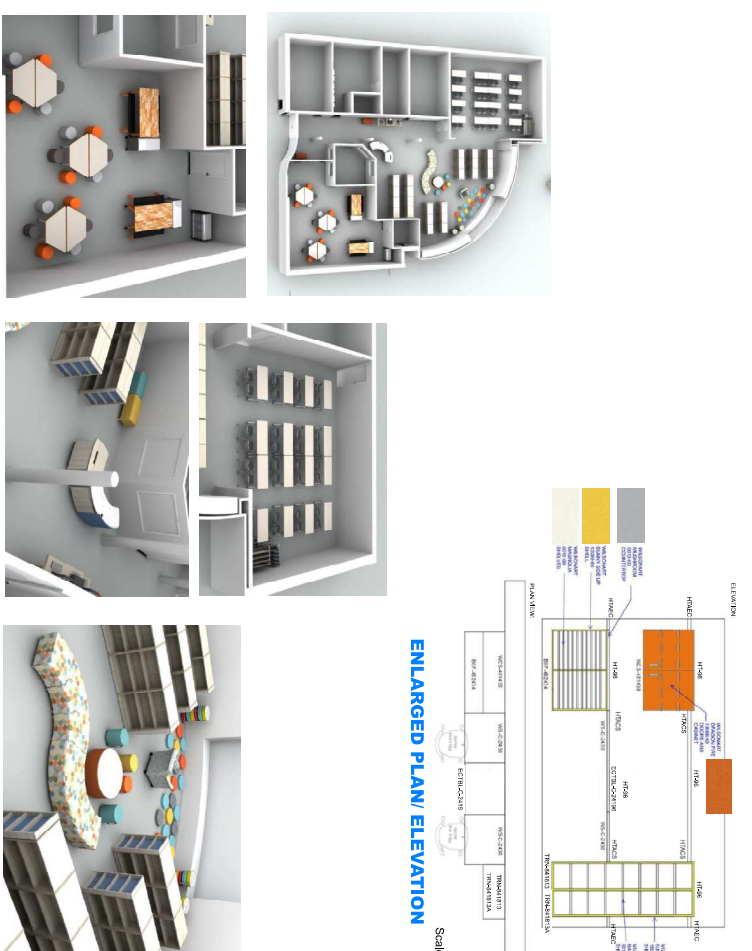
OWNER:	Livonia Public Schools
PROJECT:	CLEVELAND EL - MEDIA CENTER RENOVATION
PROJECT ADDRESS:	2505 BELMONT PARKWAY, SUITE 4000, COLUMBUS, OHIO 43260
PROJECT NUMBER:	ID-3.1
PROJECT FOLDER:	221118
DESIGNER:	NBS
ACCOUNT MANAGER:	M. BONDAN
DESIGNER:	S. WAZZANI
PROJECT MANAGER:	M. GREEN
DATE:	

**COMPONENT PLAN**

**REVISIONS:**

**REVISION NUMBER:**

# ID-3.1







2595 Bellingham • Troy, MI 48083 • 248.823.5400 • 248.823.5401 Fax  
 2211 Old Earhart Rd. Ste.190 • Ann Arbor, MI 48105 • 248.823.5400 • 248.823.5401 Fax  
 3201 Pine Tree Rd. Ste. A • Lansing, MI 48911 • 517.886.0072 • 248.823.5401 Fax  
 5160 Alliance Dr. • Bay City, MI 48706 • 989.895.8574 • 989.895.8545 Fax  
 4 North St. Clair St. • Toledo, OH 43604 • 419.662.2040 • 248.823.5401 Fax

**Quotation 357842**

**Quote Date 01/27/23**

**Customer Order**

**Project 221131**

**Customer L00002**

**Terms NET 10 DAYS**

**Expiration Date**

**Account Representative MONIQUE DUGAN**

**yourNBS.com**

**Remit Payments to: NBS, 6973 Reliable Parkway, Chicago, IL 60686**

**Quote To**

Livonia Public Schools  
 15125 FARMINGTON RD  
 LIVONIA, MI, 48154-5413

**Ship To**

Harry Lau  
 Frost Middle School  
 14041 STARK RD  
 MEDIA CENTER  
 LIVONIA, MI, 48154-5409

**Phone +1 (313) 523-9156**

**Phone +1 (734) 744-2537**

**Cell +1 (734) 812-8597**

hlau@livoniapublicschools.org

**Sales Location Troy**

**PO REQUIRED TO PLACE ORDER**

**E&I, OMNIA, TIPS & NCPA CONTRACTS HAVE BEEN APPLIED TO THIS QUOTE**

**PRICING IS VALID FOR 30 DAYS**

**LEAD TIME: 14-16 WEEKS FROM RECEIPT OF PO**

**STRAIGHT TIME NON UNION LABOR HAS BEEN QUOTED**

**ALL PRODUCT TO INSTALL AT THE SAME TIME**

**PRICING DOES NOT INCLUDE THE REMOVAL OR MOVING OF EXISTING PRODUCT**

**IF REQUIRED STORAGE FEES AND OVERTIME DIFFERENTIAL FEES WILL BE INVOICED AS NEEDED**

**30 DAYS OF FREE STORAGE HAS BEEN INCLUDED IN OUR PRICING**

Description	Quantity	Unit Price	Extended Price
<b>CIRC DESK</b>			
1 <b>SMLBR21001</b> - Booktruck, Six Sloping Shelf, 18"D x 36"W x 43"H <b>Cart Finish:</b> Smith System Paint PLT - PLATINUM SMITH SYST <b>Tag For</b> CIRC DESK BKTK-1	4	407.40	1,629.60
2 <b>ND-75DL-MOB</b> - Nomad Mobile Desk WITH transaction top (LEFT) 24"D x 75"W Mobile 29"H worksurface, with grommet 35"H Transaction top, 3mm PVC Edge: Silver Grey	1	3,823.20	3,823.20

TITLE OF PRODUCT TRANSFERS UPON RECEIPT BY CUSTOMER.

ACCEPTED BY \_\_\_\_\_ TITLE \_\_\_\_\_ DATE \_\_\_\_\_

Description	Quantity	Unit Price	Extended Price
<p>2 (5) locking casters.            HPL Accent Panel A: Wilsonart Lapis Blue D417-60            HPL End Panels B &amp; C: Formica Greyed Oak 5791-60            HPL Worksurface D &amp; T-Top: Nevamar White Fiesta MW550-SD            E: Powder Coat: Dove Grey 304            MEDIA TECH  <b>Tag For</b> CIRCULATION DESK            CD-1</p>			
<p>3 <b>MCD-1817 - STEEL CENTER DRAWER</b>            18"W X 17"D X 2"H            FINISH:BLACK            MEDIA TECH  <b>Tag For</b> CIRC DESK            CD-1B</p>	1	192.60	192.60
<p>4 <b>WMPS661220-W-LL-P2A - Mobile Pedestal, 2 Box, 1 File Drawers</b>            14-13/26"W x 20-3/4"D X 27"H            HPL: Formica Greyed Oak 5791-60            PVC: Dove Grey 304            LOCK FINISH: Nickel            PULL: P2 Nickel            MEDIA TECH  <b>Tag For</b> CIRCULATION DESK            CD-3</p>	1	509.85	509.85
<p>5 <b>ND-40BR-MOB - Nomad Book Return</b>            30"Dx40"Wx29"H, Mobile HPL/3mm PVC top w/ radiused corners,            book return slot in top, Curved face, steel end frames w/ floating HPL            panel, 4 locking casters. For use w/ MCD-DBTL1824-24            Depressible Book Truck (sold separately)            A: HPL Front: Formica Greyed Oak 5791-PG            C: HPL End Panel: Formica Greyed Oak 5791-PG            D: HPL Work Surface: Nevamar White Fiesta MW550-SD            D: PVC Work Surface: Silver Gray C600244            E: Powder Coat: Dove Grey 304            MEDIA TECH  <b>Tag For</b> CIRCULATION DESK            CD-2</p>	1	1,759.05	1,759.05
<p>6 <b>MCD-DBTL-1824-24 - Depressible Platform Book Truck,</b>            18"Dx24.25"Wx24"H HPL construction with 3mm PVC            edge banding, spring-loaded platform lift mechanism.            HPL: Formica Greyed Oak 5791-PG            PVC Edge: Silver Grey C600244            MEDIA TECH  <b>Tag For</b> CIRCULATION DESK            BKT-2</p>	1	1,327.50	1,327.50
<b>Sub Total</b>			9,241.80
<b>Total</b>			9,241.80

TITLE OF PRODUCT TRANSFERS UPON RECEIPT BY CUSTOMER.

ACCEPTED BY \_\_\_\_\_ TITLE \_\_\_\_\_ DATE \_\_\_\_\_

Description	Quantity	Unit Price	Extended Price
<b>COMPUTER STATION</b>			
<b>7 WUW2081-SP-ADA - Walk-up Wall Hung ADA Computer Workstation</b> 81"W x 20"D x 13"+H  Consisting of: Center storage module at 27"W x 13"H+ with 2-locking doors, flanked by a 27"W surface extending off the bottom right side of cabinet & another at the top left side. Full height (13"+) panel at the right end for ADA compliance. 2-Wire management grommets in the surface to coordinate with a series of wire management access holes/channels across the back of the station to conceal all wires. Wall hung using a hidden mount on the back of the cabinet along with hidden cleats behind the left and right surface extensions. Workstation has a 7/8" border on all sides with a recessed reveal detail.  Inset Reveal & Doors: Wilsonart Magnolia 5012-60 Exterior Shell: Pionite Blueberry Hill SB040-SD Edge: White Pulls: Rod Style - Brushed Nickel Finishes as noted or equal, based on location PRIMEWAY Tag For WALK-UP COMP STATION WALK-UP	1	3,682.67	3,682.67
<b>Sub Total</b>			3,682.67
<b>Total</b>			<b>3,682.67</b>
<b>BOOK STACKS</b>			
<b>8 DISP-4724 - Media Technologies Display End Panel, 3 opening,</b> 24"Wx3-1/2"Dx47-1/2"H **to mount on H11-4824 Double Sided Bookcases. HPL/3mm PVC construction HPL: Formica Greyed Oak 5791-PG Interior Back Panel: Pionite Blueberry Hill SB040-SD PVC: Silver Grey C600244 MEDIA TECH Tag For BOOK STACKS DISPLAY	14	706.05	9,884.70
<b>Sub Total</b>			9,884.70
<b>Total</b>			<b>9,884.70</b>
<b>FLEX SPACE D102</b>			
<b>9 BXYARMLESS - AMQ Bixby Chair Armless</b>	48	166.52	7,992.96

TITLE OF PRODUCT TRANSFERS UPON RECEIPT BY CUSTOMER.

ACCEPTED BY \_\_\_\_\_ TITLE \_\_\_\_\_ DATE \_\_\_\_\_

Description	Quantity	Unit Price	Extended Price
<b>9 Cushion:</b> No Cushion <b>Frame Finish:</b> Paint PC03 - Platinum <b>Seat Shell Finish:</b> Plastic PL02 - Sterling Dark <b>Back Shell Finish:</b> Plastic PL03 - Platinum <b>Castors or Glides:</b> Soft Castors <b>Accessories:</b> No Accessory <b>Storage Tray:</b> No Storage Tray AMQ SOLUTI <b>Tag For</b> FLEX SPACE S-2			
<b>10 SMEMTNL2460</b> - Elemental; Table-Nest and fold, With casters, 24D x 60W Worksurface Finish: Smith System Laminate 494360 - CLASSIC LINEN HIGH GLOSS Edge Type: 1 1/4in Top w 3/8in Bmp TMld Edge Finish: Smith System T-Mold CHP - CHAMPAGNE T MOLD Leg Finish: Smith System Paint PLT - Platinum Height: EJ - Adjustable Height SMITH SYST <b>Tag For</b> FLEX SPACE T-1	24	667.20	16,012.80
<b>Sub Total</b>			24,005.76
<b>Total</b>			<b>24,005.76</b>
<b>IDEA FACTORY</b>			
<b>11 SMPLN25740</b> - Planner Activity Table-48"D x 90"W <b>Worksurface Finish:</b> SMITH SYSTEM LAMINATE 798360 - BOARDWALK OAK LAMINATE <b>Edge Type:</b> 1 1/4in Top w 3/8in Bmpr TMld <b>Edge Finish:</b> SMITH SYSTEM T-MOLD BLU - BLUEBERRY T MOLD <b>Leg Finish:</b> SMITH SYSTEM PAINT PLT - PLATINUM SMITH SYST <b>Tag For</b> IDEA FACTORY T-7	6	764.40	4,586.40
<b>12 1011FT1.PSS9</b> - Lumin, 24" Counter Stool, Plastic Seat & Back, Armless <b>Frame Information:</b> <b>FC2:</b> Silver Frame <b>Plastic Shell Color Selection:</b> <b>SC24:</b> Apple	30	228.00	6,840.00

TITLE OF PRODUCT TRANSFERS UPON RECEIPT BY CUSTOMER.

ACCEPTED BY \_\_\_\_\_ TITLE \_\_\_\_\_ DATE \_\_\_\_\_

Description	Quantity	Unit Price	Extended Price
12 ~: No Selection <b>Glide Option Selection:</b> GL1: Standard Multi-Surface Glide <b>Packaging Options:</b> AB: Fully Assembled in a Bag EXEMPLIS Tag For IDEA FACTORY ST-1			
13 <b>SMSCA10006020</b> - Cascade Mega-Case-Open, 6-3" & 2-6" EW totes, casters <b>Edge Panel Configuration:</b> P- Pltnm Body w/Solid End Pnls <b>End Panel Finish:</b> Smith System Paint BL - BLUEBERRY SMITH SYST Tag For IDEA FACTORY CAB-1	6	951.00	5,706.00
14 <b>SMINC17577</b> - Interchange; 3 inch dual wheel casters-Pack of 4, Locking, Colorful <b>Caster Finish:</b> Smith System Plastic PLATINUM - Platinum SMITH SYST Tag For IDEA FACTORY CAB-1/CSTR	6	76.80	460.80
<b>Sub Total</b>			17,593.20
<b>Total</b>			17,593.20
<b>LOUNGE AREA 1</b>			
15 <b>ETRND</b> - Elbrook Round Table <b>Size Option:</b> Modular <b>Height:</b> Seated <b>Diameter:</b> 36.00000 <b>Top Surface Finish:</b> Woodgrain HPL 2HAW - ASH WENGE (HPL) <b>Edge Finish:</b> Plastic - PG1 6703 - ASH WENGE <b>Base Finish:</b> Smooth Metallic 4799 - PLATINUM METALLIC <b>Wheel Option:</b> With Wheels STEELCASE Tag For LOUNGE AREA 1 T-2	3	823.33	2,469.99
16 <b>83N4272SRTL</b> - FOOTINGS,42DX72W,SOFT RECTANGULAR TOP, HPL <b>RIM PROFILE:</b>	2	879.96	1,759.92

TITLE OF PRODUCT TRANSFERS UPON RECEIPT BY CUSTOMER.

ACCEPTED BY \_\_\_\_\_ TITLE \_\_\_\_\_ DATE \_\_\_\_\_

Description	Quantity	Unit Price	Extended Price
<b>16 VG1009: SOFTENED,WHITE NEBBIA</b> <b>GROMMET:</b> <b>X: NO GROMMET</b> <b>LAMINATE GROUP:</b> <b>GAL2: GALLERY LAMINATE-GRADE 2</b> <b>G1009: WHITE NEBBIA</b> KIMBALL OF <b>Tag For</b> LOUNGE AREA 1 T-3			
<b>17 CBV285228YBKP - FOOTINGS,28DX52WX28H,Y BASE KIT</b> <b>COLUMN PAINT COLOR:</b> <b>501: PLATINUM METALLIC</b> <b>FOOT PAINT COLOR:</b> <b>501: PLATINUM METALLIC</b> KIMBALL OF <b>Tag For</b> LOUNGE AREA 1 T-3B	2	540.50	1,081.00
<b>18 SMEMTEL3636 - Elemental; Table-Square, 36D x 36W</b> Worksurface Finish: Smith System Laminate 494360 - CLASSIC LINEN HIGH GLOSS Edge Type: 1 1/4in Top w 3/8in Bmp TMld Edge Finish: Smith System T-Mold CHP - CHAMPAGNE T MOLD Leg Finish: Smith System Paint PLT - Platinum Height: EC - Fixed Height for Caster SMITH SYST <b>Tag For</b> LOUNGE AREA 1 T-4	6	243.60	1,461.60
<b>19 SMINC17576 - Interchange; 3 inch dual wheel casters-Pack of 4, Locking</b> SMITH SYST <b>Tag For</b> LOUNGE AREA 1 T-4/CSTR	6	61.20	367.20
<b>20 TS4TWP - Campfire; Table-Personal</b> <b>TOP OPT: *OPT:TOP SELECTION</b> <b>HPL TOP: HPL TOP</b> <b>TOP-SURF: TOP SURFACE</b> <b>OLL01: *TOP-SURF:OLL01 PRICE GROUP 1</b> <b>2900: MISC LAMINATE</b> STEELCASE CORPORATION Laminate: 2HWA -GREY KINGSWOOD STEELCASE	4	362.48	1,449.92

TITLE OF PRODUCT TRANSFERS UPON RECEIPT BY CUSTOMER.

ACCEPTED BY \_\_\_\_\_ TITLE \_\_\_\_\_ DATE \_\_\_\_\_

Description	Quantity	Unit Price	Extended Price
<b>20</b> <b>Tag For</b> LOUNGE AREA 1 T-5			
<b>21</b> <b>911500568SR</b> - High Pressure Laminate-61x97, .028" Thick <b>TOP-SURF:</b> 2HWA GREY KINGSWOOD (HPL) STEELCASE	1	212.67	212.67
<b>22</b> <b>TS31413M</b> - Jenny; Chair-Round, Low, Multiple fabric <b>INR BACK:</b> 59DH GRADED IN PR. GRP. 8 MOMENTUM TEXTILES Purchaser: VENDOR Pattern: SILICA COMPASS Color: FRESH -09170423 Direction: VERTICAL <b>OUT BACK:</b> 59DH GRADED IN PR. GRP. 8 MOMENTUM TEXTILES Purchaser: VENDOR Pattern: SILICA COMPASS Color: FRESH -09170423 Direction: VERTICAL <b>SEAT:</b> 59DH GRADED IN PR. GRP. 8 ARC-COM FABRICS INC Purchaser: VENDOR Pattern: MAJORCA Color: INDIGO -62964 Direction: HORIZONTAL STEELCASE <b>Tag For</b> LOUNGE AREA 1 S-1A	4	1,310.08	5,240.32
<b>23</b> <b>TS31401CM</b> - Jenny; Chair-No arms, Multiple fabric, Casters <b>INR BACK:</b> 59DH GRADED IN PR. GRP. 8 MOMENTUM TEXTILES Purchaser: VENDOR Pattern: SILICA COMPASS Color: FRESH -09170423 Direction: VERTICAL <b>OUT BACK:</b> 59DH GRADED IN PR. GRP. 8 MOMENTUM TEXTILES Purchaser: VENDOR Pattern: SILICA COMPASS Color: FRESH -09170423 Direction: VERTICAL <b>SEAT:</b> 59DH GRADED IN PR. GRP. 8 ARC-COM FABRICS INC Purchaser: VENDOR Pattern: MAJORCA Color: INDIGO -62964	2	1,024.88	2,049.76

TITLE OF PRODUCT TRANSFERS UPON RECEIPT BY CUSTOMER.

Description	Quantity	Unit Price	Extended Price
23      Direction: HORIZONTAL STEELCASE Tag For      LOUNGE AREA 1 S-1B			
24 <b>TS31401CM</b> - Jenny; Chair-No arms, Multiple fabric, Casters INR BACK: 5999 MISC FABRIC MOMENTUM TEXTILES Purchaser: VENDOR Pattern: SILICA COMPASS Color: FRESH -09170423 Direction: VERTICAL OUT BACK: 5999 MISC FABRIC MOMENTUM TEXTILES Purchaser: VENDOR Pattern: SILICA COMPASS Color: FRESH -09170423 Direction: VERTICAL SEAT: 5744 BLUEBERRY STEELCASE Tag For      LOUNGE AREA 1 S-1B	2	896.54	1,793.08
25 <b>BXBYARMLESS</b> - AMQ Bixby Chair Armless Cushion: No Cushion Frame Finish: Paint PC03 - Platinum Seat Shell Finish: Plastic PL02 - Sterling Dark Back Shell Finish: Plastic PL03 - Platinum Castors or Glides: Soft Castors Accessories: No Accessory Storage Tray: No Storage Tray AMQ SOLUTI Tag For      LOUNGE AREA 1 S-2	33	166.52	5,495.16
26 <b>N93M3MX</b> - FRINGE,MID BACK,3 SEAT,ARMLESS,CONTRAST BACK UPHOLSTERY GRADE: DTE: DESIGNTEX GRADE E 3921_501: LINNEN WASSABI LUMBAR UPHOLSTERY GRADE: DTE: DESIGNTEX GRADE E 3921_501: LINNEN WASSABI EXTREME BACK UPH GRADE:	4	2,621.08	10,484.32

TITLE OF PRODUCT TRANSFERS UPON RECEIPT BY CUSTOMER.

ACCEPTED BY \_\_\_\_\_ TITLE \_\_\_\_\_ DATE \_\_\_\_\_



Description	Quantity	Unit Price	Extended Price
<p>26 DTE: DESIGNTEX GRADE E                      3921_501: LINNEN WASSABI  <b>SEAT UPHOLSTERY GRADE:</b>                      DTE: DESIGNTEX GRADE E                      3921_406: LINNEN OCEANIA  <b>FRONT SEAT GROMMET:</b>                      X: NO FRONT SEAT GROMMET  <b>LEG MATERIAL/FINISH:</b>                      501: METAL LEG,PLATINUM METALLIC  <b>GLIDE:</b>                      STD: STANDARD GLIDE                      KIMBALL OF                      Tag For LOUNGE AREA 1                      S-4</p>			
<p>27 <b>N66RD48CL - WHIMSY,48DIA ROUND,MOBILE,LAMINATE TOP</b>  <b>LAMINATE:</b>  <b>G1009: WHITE NEBBIA</b>  <b>UPHOLSTERY GRADE:</b>                      DTE: DESIGNTEX GRADE E                      3921_406: LINNEN OCEANIA                      KIMBALL OF                      Tag For LOUNGE AREA 1                      OTT-1</p>	2	1,087.80	2,175.60
<p>28 <b>N66RD48CL - WHIMSY,48DIA ROUND,MOBILE,LAMINATE TOP</b>  <b>LAMINATE:</b>  <b>G1009: WHITE NEBBIA</b>  <b>UPHOLSTERY GRADE:</b>                      DTE: DESIGNTEX GRADE E                      3921_501: LINNEN WASSABI                      KIMBALL OF                      Tag For LOUNGE AREA 1                      OTT-2</p>	2	1,087.80	2,175.60
<p>29 <b>8308/2FO/GD1 - RAVEN INSIDE 30 CURCE MODULAR UNIT</b>                      SEAT HEIGHT: 18"                      BACK HEIGHT: 33"                      UPHOLSTERY BACK: CF STINSON POLYGON MARIANA POL20                      BACK FABRIC DIRECTION: RAILROAD OR OFF THE BOLT - TBD                      UPHOLSTERY SEAT: CF STINSON CORE 2.0 BLUEBERRY                      CRE261</p>	7	1,355.83	9,490.81

TITLE OF PRODUCT TRANSFERS UPON RECEIPT BY CUSTOMER.

ACCEPTED BY \_\_\_\_\_ TITLE \_\_\_\_\_ DATE \_\_\_\_\_

yourNBS.com

Remit Payments to: NBS, 6973 Reliable Parkway, Chicago, IL 60686

Description	Quantity	Unit Price	Extended Price
<b>29</b> LEGS: ALUMINUM +/NON GANGING UNIT ERG INTERN Tag For LOUNGE AREA 1 S-5A			
<b>30</b> <b>8314/2FO/GD1</b> - RAVEN OUTSIDE 30 CURCE MODULAR UNIT SEAT HEIGHT: 18" BACK HEIGHT: 33" UPHOLSTERY BACK: CF STINSON POLYGON MARIANA POL20 BACK FABRIC DIRECTION: RAILROAD OR OFF THE BOLT - TBD UPHOLSTERY SEAT: CF STINSON CORE 2.0 BLUEBERRY CRE261 LEGS: ALUMINUM +/NON GANGING UNIT ERG INTERN Tag For LOUNGE AREA 1 S-5B	1	1,459.71	1,459.71
<b>31</b> <b>8334/2FO/GD1</b> - RAVEN BACKLESS 30 CURCE MODULAR UNIT SEAT HEIGHT: 18" SEAT DEPTH: 27" UPHOLSTERY: CF STINSON CORE 2.0 BLUEBERRY CRE261 LEGS: ALUMINUM +/NON GANGING UNIT ERG INTERN Tag For LOUNGE AREA 1 S-5C	3	1,087.80	3,263.40
<b>Sub Total</b>			52,430.06
<b>Total</b>			<b>52,430.06</b>
<b>LOUNGE AREA 2</b>			
<b>32</b> <b>N66RD48CL</b> - WHIMSY,48DIA ROUND,MOBILE,LAMINATE TOP LAMINATE: <b>G1009</b> : WHITE NEBBIA UPHOLSTERY GRADE: <b>DTE</b> : DESIGNTEX GRADE E <b>3921_501</b> : LINNEN WASSABI KIMBALL OF Tag For LOUNGE AREA 2 OTT-2	1	1,087.80	1,087.80
<b>33</b> <b>F119-22X31X35-Z</b> - Rock'n Roller XL 22"L x 31"W x 35"H Fabric Seat Finish GR1 Grade-5 Little Dot Chartruse	2	1,016.17	2,032.34

TITLE OF PRODUCT TRANSFERS UPON RECEIPT BY CUSTOMER.

ACCEPTED BY \_\_\_\_\_ TITLE \_\_\_\_\_ DATE \_\_\_\_\_

yourNBS.com

Remit Payments to: NBS, 6973 Reliable Parkway, Chicago, IL 60686

Description	Quantity	Unit Price	Extended Price
<b>33</b> Embroidery Option ~ No Embroidery CAL 133 Option FOMCORE <b>Tag For</b> LOUNGE AREA 2 S-3A			
<b>34</b> <b>F119-22X31X35-Z</b> - Rock'n Roller XL 22"L x 31"W x 35"H Fabric Seat Finish GR1 Grade-5 Little Dot Sapphire Embroidery Option ~ No Embroidery CAL 133 Option FOMCORE <b>Tag For</b> LOUNGE AREA 2 S-3B	2	1,016.17	2,032.34
<b>Sub Total</b>			5,152.48
<b>Total</b>			5,152.48
<b>LOUNGE AREA 3</b>			
<b>35</b> <b>N66RD48CL</b> - WHIMSY,48DIA ROUND,MOBILE,LAMINATE TOP <b>LAMINATE:</b> <b>G1009:</b> WHITE NEBBIA <b>UPHOLSTERY GRADE:</b> <b>DTE:</b> DESIGNTEX GRADE E <b>3921_501:</b> LINNEN WASSABI KIMBALL OF <b>Tag For</b> LOUNGE AREA 3 OTT-2	1	1,087.80	1,087.80
<b>36</b> <b>8308/2FO/GD1</b> - RAVEN INSIDE 30 CURGE MODULAR UNIT SEAT HEIGHT: 18" BACK HEIGHT: 33" UPHOLSTERY BACK: CF STINSON POLYGON MARIANA POL20 BACK FABRIC DIRECTION: RAILROAD OR OFF THE BOLT - TBD UPHOLSTERY SEAT: CF STINSON CORE 2.0 BLUEBERRY CRE261 LEGS: ALUMINUM +/NON GANGING UNIT ERG INTERN <b>Tag For</b> LOUNGE AREA 3 S-5D	8	1,355.83	10,846.64

TITLE OF PRODUCT TRANSFERS UPON RECEIPT BY CUSTOMER.

ACCEPTED BY \_\_\_\_\_ TITLE \_\_\_\_\_ DATE \_\_\_\_\_



2595 Bellingham • Troy, MI 48083 • 248.823.5400 • 248.823.5401 Fax  
 2211 Old Earhart Rd. Ste.190 • Ann Arbor, MI 48105 • 248.823.5400 • 248.823.5401 Fax  
 3201 Pine Tree Rd. Ste. A • Lansing, MI 48911 • 517.886.0072 • 248.823.5401 Fax  
 5160 Alliance Dr. • Bay City, MI 48706 • 989.895.8574 • 989.895.8545 Fax  
 4 North St. Clair St. • Toledo, OH 43604 • 419.662.2040 • 248.823.5401 Fax

**Quotation 357842**  
 Page 12 / 15 (cont'd)

yourNBS.com

Remit Payments to: NBS, 6973 Reliable Parkway, Chicago, IL 60686

Description	Quantity	Unit Price	Extended Price
<b>Sub Total</b>			11,934.44
<b>Total</b>			11,934.44
<b>MEDIA TECH MILLWORK</b>			
<b>37 TRN-SB-841813-L - TRANSITION 84X18X13 STARTER UNIT</b> FLOOR TO TOP OF UNIT HEIGHT 78"H X 20"W X 13"D INCLUDES 3-FIXED AND 4-TAB CAM ADJUSTABLE SHELVES HPL END PANELS/BASE/TOP: WA BLACKBIRD 5024-60 PVC END PANELS/BASE/TOP: BLACK C600001 HPL ADJ SHELVES: WA MAGNOLIA 5012-60 PVC ADJ SHELVES: GENERIC WHITE C100033 MEDIA TECH <b>Tag For</b> MEDIA TECH MILLWORK TRN-841813	1	497.25	497.25
<b>38 TRN-SB-841813A-L - TRANSITION 84X18X13 ADDER UNIT</b> FLOOR TO TOP OF UNIT HEIGHT 78"H X 19"W X 13"D INCLUDES 3-FIXED AND 4-TAB CAM ADJUSTABLE SHELVES HPL END PANELS/BASE/TOP: WA BLACKBIRD 5024-60 PVC END PANELS/BASE/TOP: BLACK C600001 HPL ADJ SHELVES: WA MAGNOLIA 5012-60 PVC ADJ SHELVES: GENERIC WHITE C100033 MEDIA TECH <b>Tag For</b> MEDIA TECH MILLWORK TRN-841813A	1	389.70	389.70
<b>39 WCS-481430-LL-HPA - ELEMENTS CUPBOARD STORAGE WALL</b> UNIT 48"W X 14"D X 30"H WITH 2-ADJUSTABLE SHELVES, 2-DOORS WITH HINGE HPL: WA FRESH CUT 13065-60 PVC: FRESH CUT C700189 HINGE: H3 PULL: TBD LOCK: KEY ALIKE MEDIA TECH <b>Tag For</b> MEDIA TECH MILLWORK WCS-481430	2	745.65	1,491.30
<b>40 BOF-482434-L-CT - OPEN FOLIO UNIT WITH CONTINUOUS TOP</b> 48"W X 24"D X 34"H 22-FIXED SHELVES HPL CASE: WA BLACKBIRD 5024-60 PVC CASE: BLACK C600001 HPL FOLIO SHELVES: WA MAGNOLIA 5012-60 MEDIA TECH <b>Tag For</b> MEDIA TECH MILLWORK BOF-482434	1	759.60	759.60
<b>41 BCCB4D2-482434-LL-HP - CUPBOARD BASE UNIT</b> 48"W X 24"D X 34"H	1	1,196.55	1,196.55

TITLE OF PRODUCT TRANSFERS UPON RECEIPT BY CUSTOMER.

ACCEPTED BY \_\_\_\_\_ TITLE \_\_\_\_\_ DATE \_\_\_\_\_

Description	Quantity	Unit Price	Extended Price
<b>41</b> 4-CUBICLE AND 2-DRAWER STORAGE 2-ADJUSTABLE SHELVES, 2-DOORS WITH HINGE HPL: WA FRESH CUT 13065-60 PVC: FRESH CUT C700189 HINGE: H3 PULL: TBD LOCK: KEY ALIKE MEDIA TECH <b>Tag For</b> MEDIA TECH MILLWORK BCSLD-242434			
<b>42</b> <b>ECTBL-C-24196</b> - CONTINUOUS TOP ECT WITH 4" BACK SPLASH 196"W X 24"D X 1.25"H +/ECTBL-C-24186 TO BE 186"L HPL: WA MUSHROOM 5013-60 PVC: TBD (FOG C600257 RECOMMENDED) MEDIA TECH <b>Tag For</b> MEDIA TECH MILLWORK ECTBL-C-24196	1	537.30	537.30
<b>43</b> <b>WSCSA48-C-T</b> - 48" WIDE VST ASSEMBLY WITH 2-SUPPORT ARMS +/MODIFIED FOR USE WITH 34"H OVERALL WORKSURFACE TFL: CANADIAN GRAY PVC: SILVER GRAY C600244 POWDER COAT: 809 SILVER MEDIA TECH <b>Tag For</b> MEDIA TECH MILLWORK WS-C-2430	1	277.65	277.65
<b>44</b> <b>HT-96</b> - HORIZONTAL MOUNTING TRACK 96" WITH PRE-PUNCHED MOUNT HOULES ON 16" CENTERS. INCLUDES CONCEALMENT MATERIAL. FINISH: ANODIZED ALUMINUM WALL TYPE: CMU MEDIA TECH <b>Tag For</b> MEDIA TECH MILLWORK HT-96	5	78.75	393.75
<b>45</b> <b>HTAEC</b> - HORIZONTAL MOUNTING TRACK END CAP WITH MOUNTING SCREWS FINISH: BLACK MEDIA TECH <b>Tag For</b> MEDIA TECH MILLWORK HTAEC	4	7.20	28.80
<b>46</b> <b>HTACS</b> - HORIZONTAL MOUNTING TRACK CONNECTOR SPLICE PLATE FINISH: ALUMINUM MEDIA TECH	4	3.15	12.60

TITLE OF PRODUCT TRANSFERS UPON RECEIPT BY CUSTOMER.

ACCEPTED BY \_\_\_\_\_ TITLE \_\_\_\_\_ DATE \_\_\_\_\_

Description	Quantity	Unit Price	Extended Price
46 Tag For MEDIA TECH MILLWORK HTACS			
47 <b>UPCHARGE</b> - UPCHARGE FOR PREMIUM LAMINATE FORMICA GREYED OAK 5791-PG MEDIA TECH	1	349.92	349.92
<b>Sub Total</b>			5,934.42
<b>Total</b>			<b>5,934.42</b>
49 <b>LOT</b> - LAMINTE UPCHARGE 494360 - CLASSIC LINEN HIGH GLOSS SMITH SYST	1	448.35	448.35
50 <b>LOT</b> - PROJECT MANAGEMENT FEES 32 HOURS X \$85 NBS TROY	1	2,720.00	2,720.00
51 <b>LOT</b> - NON UNION STRAIGHT TIME LABOR TO RECEIVE AND DELIVER NEW PRODUCT TO THE JOB SITE  ALL WORK TO BE DONE AT ONE TIME ROSE MOVIN	1	2,383.00	2,383.00
52 <b>LOT</b> - NON UNION STRAIGHT TIME LABOR TO INSTALL NEW PRODUCT PER PRINT  ALL WORK TO BE DONE AT ONE TIME  PRICING DOES NOT INCLUDE THE REMOVAL OF EXISTING PRODUCT  CLEAR AND READY SPACE INCLUDES DEBRIS REMOAVL ROSE MOVIN	1	10,954.00	10,954.00
53 <b>LOT</b> - NON UNION LABOR OVERTIME DIFFERENTIAL  WILL BE INVOICED IF REQUIRED ROSE MOVIN	1	3,952.00	3,952.00
54 <b>MONTHLY</b> - MONTHLY STORAGE FEES TO HOLD FURNITURE AT WAREHOUSE.  WILL BE INVOICED MONTHLY FOR THE MONTHS USED - NOT TO EXCEED FIGURE ROSE MOVIN	4	1,235.00	4,940.00

**Quotation Totals**

<b>Sub Total</b>	165,256.88
MEDIA TECH FREIGHT	1,363.00

TITLE OF PRODUCT TRANSFERS UPON RECEIPT BY CUSTOMER.

ACCEPTED BY \_\_\_\_\_ TITLE \_\_\_\_\_ DATE \_\_\_\_\_



2595 Bellingham • Troy, MI 48083 • 248.823.5400 • 248.823.5401 Fax  
 2211 Old Earhart Rd. Ste.190 • Ann Arbor, MI 48105 • 248.823.5400 • 248.823.5401 Fax  
 3201 Pine Tree Rd. Ste. A • Lansing, MI 48911 • 517.886.0072 • 248.823.5401 Fax  
 5160 Alliance Dr. • Bay City, MI 48706 • 989.895.8574 • 989.895.8545 Fax  
 4 North St. Clair St. • Toledo, OH 43604 • 419.662.2040 • 248.823.5401 Fax

**Quotation 357842**  
 Page 15 / 15 (cont'd)

**yourNBS.com**      **Remit Payments to:** NBS, 6973 Reliable Parkway, Chicago, IL 60686

SMITH SYST FREIGHT	4,093.00
FOMCORE FREIGHT	607.00
STEELCASE COM FABRIC LINE 24	525.00
<b>Grand Total</b>	<b>171,844.88</b>

**End of Quotation**

TITLE OF PRODUCT TRANSFERS UPON RECEIPT BY CUSTOMER.

ACCEPTED BY \_\_\_\_\_ TITLE \_\_\_\_\_ DATE \_\_\_\_\_



2595 Bellingham • Troy, MI 48083 • 248.823.5400 • 248.823.5401 Fax  
 2211 Old Earhart Rd. Ste.190 • Ann Arbor, MI 48105 • 248.823.5400 • 248.823.5401 Fax  
 3201 Pine Tree Rd. Ste. A • Lansing, MI 48911 • 517.886.0072 • 248.823.5401 Fax  
 5160 Alliance Dr. • Bay City, MI 48706 • 989.895.8574 • 989.895.8545 Fax  
 4 North St. Clair St. • Toledo, OH 43604 • 419.662.2040 • 248.823.5401 Fax

**Quotation 357813**

**Quote Date** 01/27/23

**Customer Order**

**Project** 221129

**Customer** L00002

**Terms** NET 10 DAYS

**Expiration Date**

**Account Representative** MONIQUE DUGAN

**yourNBS.com**

**Remit Payments to:** NBS, 6973 Reliable Parkway, Chicago, IL 60686

**Quote To**

Livonia Public Schools  
 15125 FARMINGTON RD  
 LIVONIA, MI, 48154-5413

**Ship To**

Harry Lau  
 Rosedale Elementary School  
 36651 ANN ARBOR TRL  
 MEDIA CENTER  
 LIVONIA, MI, 48150-3421

**Phone** +1 (313) 523-9156

**Phone** +1 (734) 744-2537

**Cell** +1 (734) 812-8597

hlau@livoniapublicschools.org

**Sales Location** Troy

**PO REQUIRED TO PLACE ORDER**

**E&I, OMNIA, TIPS & NCPA CONTRACTS HAVE BEEN APPLIED TO THIS QUOTE**

**PRICING IS VALID FOR 30 DAYS**

**LEAD TIME: 14-16 WEEKS FROM RECEIPT OF PO**

**STRAIGHT TIME NON UNION LABOR HAS BEEN QUOTED**

**ALL PRODUCT TO INSTALL AT THE SAME TIME**

**PRICING DOES NOT INCLUDE THE REMOVAL OR MOVING OF EXISTING PRODUCT**

**IF REQUIRED STORAGE FEES AND OVERTIME DIFFERENTIAL FEES WILL BE INVOICED AS NEEDED**

**30 DAYS OF FREE STORAGE HAS BEEN INCLUDED IN OUR PRICING**

**Description**

**Quantity**

**Unit Price**

**Extended Price**

**BOOK STACKS**

Description	Quantity	Unit Price	Extended Price
<b>1 DISP-4724 - Media Technologies Display End Panel, 3 opening, 24"Wx3-1/2"Dx47-1/2"H</b> **to mount on H11-4824 Double Sided Bookcases. HPL/3mm PVC construction HPL: Formica Greyed Oak 5791-PG Interior Back Panel: Wilsonart Tangerine 4915-60 PVC: Silver Grey C600244 MEDIA TECH <b>Tag For</b> BOOK STACKS DISPLAY	5	706.05	3,530.25

TITLE OF PRODUCT TRANSFERS UPON RECEIPT BY CUSTOMER.

ACCEPTED BY \_\_\_\_\_ TITLE \_\_\_\_\_ DATE \_\_\_\_\_



Description	Quantity	Unit Price	Extended Price
<b>Sub Total</b>			3,530.25
<b>Total</b>			<b>3,530.25</b>

**WALK UP STATION**

<b>2</b>	<b>WUW2081-SP-ADA - Walk-up Wall Hung ADA Computer Workstation</b> 81"W x 20"D x 13"+H	1	3,682.67	3,682.67
----------	---	---	----------	----------

Consisting of:  
 Center storage module at 27"W x 13"H+ with 2-locking doors, flanked by a 27"W surface extending off the bottom right side of cabinet & another at the top left side. Full height (13"+) panel at the left end for ADA compliance.  
 2-Wire management grommets in the surface to coordinate with a series of wire management access holes/channels across the back of the station to conceal all wires.  
 Wall hung using a hidden mount on the back of the cabinet along with hidden cleats behind the left and right surface extensions.  
 Workstation has a 7/8" border on all sides with a recessed reveal detail.

Inset Reveal & Doors: Wilsonart Magnolia 5012-60  
 Exterior Shell: Wilsonart Lapis Blue D417K-18  
 Edge: White  
 Pulls: Rod Style - Brushed Nickel  
 Finishes as noted or equal, based on location  
 PRIMEWAY

**Tag For** WALK-UP COMP STATION  
 WALK-UP

<b>Sub Total</b>				3,682.67
<b>Total</b>				<b>3,682.67</b>

**CIRC DESK**

<b>3</b>	<b>SMLBR21004 - Booktruck, Six Sloping Shelf with Six Book Supports,</b> 18"D x 36"W x 43"H <b>Cart Finish:</b> Smith System Paint CL - CLEMENTINE <b>Divider Finish:</b> Smith System Plastic BLACK - BLACK SMITH SYST <b>Tag For</b> CIRC DESK BKTK-1	4	447.60	1,790.40
----------	---	---	--------	----------

<b>4</b>	<b>H11-4112 - Benchmark Shelving</b> 37"W x 12"D x 48"H Sgl Face Starter TFL back, HPL panel, PVC construction, HPL shelves, HPL: Formica Grayed Oak 5791-PG	1	471.15	471.15
----------	--	---	--------	--------

TITLE OF PRODUCT TRANSFERS UPON RECEIPT BY CUSTOMER.

ACCEPTED BY \_\_\_\_\_ TITLE \_\_\_\_\_ DATE \_\_\_\_\_

yourNBS.com

Remit Payments to: NBS, 6973 Reliable Parkway, Chicago, IL 60686

Description	Quantity	Unit Price	Extended Price
<b>4</b> PVC: Silver Gray C600244 TFL Back: Greyed Oak 5791 MEDIA TECH <b>Tag For</b> CIRCULATION DESK H11-4812A			
<b>5</b> <b>H11-4812A</b> - Benchmark Shelving 37"W x 12"D x 48"H Sgl Face Adder TFL back, HPL panel, PVC construction, HPL shelves, HPL: Formica Grayed Oak 5791-PG PVC: Silver Gray C600244 TFL Back: Greyed Oak 5791 MEDIA TECH <b>Tag For</b> CIRCULATION DESK H11-4812A	2	391.95	783.90
<b>6</b> <b>ND-75DX-MOB</b> - Nomad Desk WITHOUT transaction counter 75"W X 24"D, 29"H Worksurface, with grommet HPL Worksurface D: Nevamar White Fiesta MW550-SD HPL Panel B & C: Premium Color: Formica Grayed Oak 5791-PG PVC Edge: Silver Grey C600244 Accent Panel A: Wilsonart Lapis Blue D417-60 Powdercoat: 809 Silver MEDIA TECH <b>Tag For</b> CIRC DESK CD-1	1	3,636.45	3,636.45
<b>7</b> <b>MCD-1817</b> - Steel Pencil Drawer 18"W x 17"D X 2"H Finish: Black MEDIA TECH <b>Tag For</b> CIRCULATION DESK CD-1B	1	192.60	192.60
<b>8</b> <b>ND-40BR-MOB</b> - Nomad Mobile Book Return 34"W x 29"H HPL Worksurface: WA Classic Linen 4943-38 HPL Panel B,C: Premium Color: Formica Grayed Oak 5791-PG PVC Edge: Silver Grey C600244 Powdercoat: 809 Silver MEDIA TECH <b>Tag For</b> CIRC DESK CD-2	1	1,759.05	1,759.05
<b>9</b> <b>MDS-DBTL-1824-24</b> - Nomad Depressible Book Truck 32/39" H HPL Panel: Premium Color: Formica Grayed Oak 5791-PG	1	1,327.50	1,327.50

TITLE OF PRODUCT TRANSFERS UPON RECEIPT BY CUSTOMER.

ACCEPTED BY \_\_\_\_\_ TITLE \_\_\_\_\_ DATE \_\_\_\_\_

yourNBS.com

Remit Payments to: NBS, 6973 Reliable Parkway, Chicago, IL 60686

Description	Quantity	Unit Price	Extended Price
<b>9</b> PVC Edge: Silver Grey C600244 Powdercoat: 809 Silver MEDIA TECH <b>Tag For</b> CIRC DESK BKTK-2			
<b>10</b> <b>WMPS661220-W-LP2A</b> - Nomad Mobile Pedestal 2 Box 14-13/16"W" x 20-3/4"D x 27"H HPL Premium Color: Formica Grayed Oak 5791-PG PVC Edge: Silver Grey C600244 Pull Type: P2 Arch Pull Pull Finish: Nickel Lock Type: Lock Alike MEDIA TECH <b>Tag For</b> CIRC DESK CD-3	1	509.85	509.85
<b>Sub Total</b>			10,470.90
<b>Total</b>			<b>10,470.90</b>
<b>FLEX SPACE B129</b>			
<b>11</b> <b>BXBYARMLESS</b> - AMQ Bixby Chair Armless <b>Cushion:</b> No Cushion <b>Frame Finish:</b> Paint PC03 - Platinum <b>Seat Shell Finish:</b> Plastic PL02 - Sterling Dark <b>Back Shell Finish:</b> Plastic PL03 - Platinum <b>Castors or Glides:</b> Soft Castors <b>Accessories:</b> No Accessory <b>Storage Tray:</b> No Storage Tray AMQ SOLUTI <b>Tag For</b> FLEX SPACE B129 S-2	40	166.52	6,660.80
<b>12</b> <b>SMEMTNL2460</b> - Elemental; Table-Nest and fold, With casters, 24D x 60W Worksurface Finish: Smith System Laminate 494360 - CLASSIC LINEN HIGH GLOSS Edge Type: 1 1/4in Top w 3/8in Bmp TMld Edge Finish: Smith System T-Mold CHP - CHAMPAGNE T MOLD Leg Finish: Smith System Paint PLT - Platinum Height: EJ - Adjustable Height SMITH SYST <b>Tag For</b> FLEX SPACE B129 T-1	20	667.20	13,344.00

TITLE OF PRODUCT TRANSFERS UPON RECEIPT BY CUSTOMER.

ACCEPTED BY \_\_\_\_\_ TITLE \_\_\_\_\_ DATE \_\_\_\_\_

Description	Quantity	Unit Price	Extended Price
<b>Sub Total</b>			20,004.80
<b>Total</b>			<b>20,004.80</b>

LOUNGE AREA 1

<b>13</b>	<b>FK007-CONVOCART-Z-SE - Convo Lily Set (10 Convo Lily pads and cart)</b> <b>Select Fabric Seat Finish:</b> <b>GR2: Grade-2</b> <b>DOD: Doodle</b> <b>GR1: Grade-1</b> <b>STX-8838: Imperial</b> <b>GR1: Grade-1</b> <b>STX-8823: Carbon</b> <b>GR1: Grade-1</b> <b>STX-8802: Lagoon</b> <b>GR1: Grade-1</b> <b>STX-8833: Crème De Menthe</b> <b>GR1: Grade-1</b> <b>STX-8842: Limoncello</b> FOMCORE <b>Tag For</b> LOUNGE AREA 1 S-4	3	4,404.40	13,213.20
<b>14</b>	<b>N66RD22C - WHIMSY,22DIA ROUND,MOBILE</b> <b>UPHOLSTERY GRADE:</b> <b>MOMK: MOMENTUM GRADE K</b> <b>09191642: SILICA STRIDE ROYAL</b> <b>LEATHER PULL:</b> <b>EB: EBONY LEATHER</b> KIMBALL OF <b>Tag For</b> LOUNGE AREA 1 OTT-1	8	703.80	5,630.40
<b>15</b>	<b>KRB-C3060L-29-4C - Media Technologies Kirby Mobile Table</b> 30"x60"x29"H HPL Worksurface, HPL Panels, 3mm PVC Edges, Panel-mount locking casters. HPL Top/Exterior End Panels: Formica 8824-58 White drops HPL Interior of Base: Wilsonart Lapis Blue D417-60 PVC: Silver Grey C600244 Powder Coat: Silver 809 MEDIA TECH	2	667.80	1,335.60

TITLE OF PRODUCT TRANSFERS UPON RECEIPT BY CUSTOMER.

ACCEPTED BY \_\_\_\_\_ TITLE \_\_\_\_\_ DATE \_\_\_\_\_

Description	Quantity	Unit Price	Extended Price
15 Tag For LOUNGE AREA T-4			
16 <b>NAC1872CUSH</b> - ACCESSORIES,18DX72W,CUSHION <b>UPHOLSTERY GRADE:</b> 6: GRADE 6 <b>3628:</b> ESSENCE MIDNIGHT METALLIC KIMBALL OF Tag For LOUNGE AREA 1 CUSH	5	547.40	2,737.00
17 <b>7380/F20/FGD</b> - BRIGHT JR 18"W SINGLE SEAT MODULAR UNIT SEAT HEIGHT: 15" BACK HEIGHT: 28" A-BACK: MOMENTUM BAUBLE MADRAS 09489544 FABRIC BACK DIRECTION: RAILROAD OR OFF THE BOLT - TBD B-SEAT: CF STINSON CORE 2.0 REGAL BLUE CRE274 C-SIDES: CF STINSON CORE 2.0 REGAL BLUE CRE274 D-BACK: MOMENTUM BAUBLE MADRAS 09489544 FABRIC BACK DIRECTION: RAILROAD OR OFF THE BOLT - TBD +/NON GANGING UNIT ERG INTERN Tag For LOUNGE AREA 1 S-1A	4	1,149.05	4,596.20
18 <b>7382-T/FGD</b> - BRIGHTON JR 18X24 UPH MODULAR TABLE WITH LAMINATE TOP TABLE HEIGHT: 14" LAMINATE: STD/TBD EDGE DETAIL: GR 6F .75" FLAT MULTIPLY EDGE STAIN: STD/TBD C-SIDES: CF STINSON STRIDE GERN ST157 +/NON GANGING UNIT ERG INTERN Tag For LOUNGE AREA 1 S-1B	2	1,196.58	2,393.16
19 <b>7383/2FO/FGD</b> - BRIGHT JR 30 DEGREE MODULAR UNIT SEAT HEIGHT: 15" BACK HEIGHT: 28" A-BACK: MOMENTUM BAUBLE MADRAS 09489544 FABRIC BACK DIRECTION: RAILROAD OR OFF THE BOLT - TBD B-SEAT: CF STINSON CORE 2.0 REGAL BLUE CRE274 C-SIDES: CF STINSON CORE 2.0 REGAL BLUE CRE274 D-BACK: MOMENTUM BAUBLE MADRAS 09489544 FABRIC BACK DIRECTION: RAILROAD OR OFF THE BOLT - TBD +/NON GANGING UNIT ERG INTERN Tag For LOUNGE AREA 1 S-1C	2	1,400.91	2,801.82

TITLE OF PRODUCT TRANSFERS UPON RECEIPT BY CUSTOMER.

ACCEPTED BY \_\_\_\_\_ TITLE \_\_\_\_\_ DATE \_\_\_\_\_

Description	Quantity	Unit Price	Extended Price
<b>20</b> <b>7385-T/FGD - BRIGHTON JR 18X24 UPH MODULAR TABLE WITH LAMINATE TOP</b> TABLE HEIGHT: 14" LAMINATE: STD/TBD EDGE DETAIL: GR 6F .75" FLAT MULTIPLY EDGE STAIN: STD/TBD C-SIDES: CF STINSON STRIDE GERN ST157 +/NON GANGING UNIT ERG INTERN <b>Tag For</b> LOUNGE AREA 1 S-1D	1	1,429.33	1,429.33
<b>Sub Total</b>			34,136.71
<b>Total</b>			<b>34,136.71</b>
<b>IDEA FACTORY</b>			
<b>21</b> <b>TRN-SB-841813-L - TRANSITION 84X18X13 STARTER UNIT</b> FLOOR TO TOP OF UNIT HEIGHT 78"H X 20"W X 13"D INCLUDES 3-FIXED AND 4-TAB CAM ADJUSTABLE SHELVES HPL END PANELS/TOP/BASE: WA CATALINA 13092-60 PVC END PANELS/TOP/BASE: CATALINA C500195 HPL ADJ SHELVES: WA MAGNOLIA 5012-60 PVC ADJ SHELVES:GENERIC WHITE C100033 MEDIA TECH <b>Tag For</b> IDEA FACTORY TRN-841813	1	497.25	497.25
<b>22</b> <b>TRN-SB-841813A-L - TRANSITION 84X18X13 ADDER UNIT</b> FLOOR TO TOP OF UNIT HEIGHT 78"H X 19"W X 13"D INCLUDES 3-FIXED AND 4-TAB CAM ADJUSTABLE SHELVES HPL END PANELS/TOP/BASE: WA CATALINA 13092-60 PVC END PANELS/TOP/BASE: CATALINA C500195 HPL ADJ SHELVES: WA MAGNOLIA 5012-60 PVC ADJ SHELVES: GENERIC WHITE C100033 MEDIA TECH <b>Tag For</b> IDEA FACTORY TRN-841813A	1	389.70	389.70
<b>23</b> <b>WCS-481430-LL-HPA - ELEMENTS CUPBOARD STORAGE WALL</b> UNIT 48"W X 14"D X 30"H WITH 2-ADJUSTABLE SHELVES, 2-DOORS WITH HINGE HPL: WA DRAGON FIR 13088-60 PVC: DRAGON FIRE C300346 HINGE: H3 PULL: TBD LOCK: KEY ALIKE MEDIA TECH <b>Tag For</b> MEDIA TECH MILLWORK WCS-481430	1	745.65	745.65

TITLE OF PRODUCT TRANSFERS UPON RECEIPT BY CUSTOMER.

ACCEPTED BY \_\_\_\_\_ TITLE \_\_\_\_\_ DATE \_\_\_\_\_

Description	Quantity	Unit Price	Extended Price
<b>24 BOF-482434-L-CT - OPEN FOLIO UNIT WITH CONTINUOUS TOP</b> 48"W X 24"D X 34"H HPL CASE: WA CATALINA 13092-60 PVC CASE: CATALINA C500195 HPL FOLIO SHELVES: WA MAGNOLIA 5012-60 MEDIA TECH <b>Tag For</b> MEDIA TECH MILLWORK BOF-482434	1	759.60	759.60
<b>25 ECTBL-C-24138 - CONTINUOUS TOP ECT WITH 4" BACK SPLASH</b> 138"W X 24"D X 1.25"H HPL: WA MUSHROOM 5013-60 PVC: TBD (FOG C600257 RECOMMENDED) MEDIA TECH <b>Tag For</b> MEDIA TECH MILLWORK BCSLD-242434	1	440.10	440.10
<b>26 WSCSA48-C-T - 48" WIDE VST ASSEMBLY WITH 2-SUPPORT ARMS</b> MODIFIED FOR USE WITH 34"H OVERALL WORKSURFACE TFL: CANADIAN GRAY PVC: SILVER GRAY C600244 POWDER COAT: 809 SILVER MEDIA TECH <b>Tag For</b> MEDIA TECH MILLWORK WS-C-2430	1	277.65	277.65
<b>27 HT-96 - HORIZONTAL MOUNTING TRACK 96" WITH PRE-PUNCHED MOUNT HOULES ON 16" CENTERS. INCLUDES CONCEALMENT MATERIAL.</b> FINISH: ANODIZED ALUMINUM WALL TYPE: CMU MEDIA TECH <b>Tag For</b> MEDIA TECH MILLWORK HT-96	5	78.75	393.75
<b>28 HTAEC - HORIZONTAL MOUNTING TRACK END CAP WITH MOUNTING SCREWS</b> FINISH: BLACK MEDIA TECH <b>Tag For</b> MEDIA TECH MILLWORK HTAEC	4	7.20	28.80
<b>29 HTACS - HORIZONTAL MOUNTING TRACK CONNECTOR SPLICE PLATE</b> FINISH: ALUMINUM MEDIA TECH <b>Tag For</b> MEDIA TECH MILLWORK HTACS	4	3.15	12.60
<b>30 UPCHARGE - UPCHARGE FOR PREMIUM LAMINATE FORMICA GREYED OAK 5791-PG</b>	1	245.83	245.83

TITLE OF PRODUCT TRANSFERS UPON RECEIPT BY CUSTOMER.

ACCEPTED BY \_\_\_\_\_ TITLE \_\_\_\_\_ DATE \_\_\_\_\_

Description	Quantity	Unit Price	Extended Price
30 MEDIA TECH			
32 <b>SMEMTEL60TR</b> - Elemental; Table-Trapezoid, 30D x 60W Worksurface Finish: Smith System Laminate 494360 - CLASSIC LINEN HIGH GLOSS Edge Type: D-1 1/4in Top w 4mm TMld Edge Finish: Smith System T-Mold ORG - ORANGE T MOLD Leg Finish: Smith System Paint PLT - Platinum Height: EA - Adjustable Height SMITH SYST Tag For IDEA FACTORY B121 T-2	6	337.80	2,026.80
33 <b>SMCSC511000000</b> - Cascade Mid-Cabinet-Open, shelves, casters Edge Panel Configuration: P- Pltnm Body w/Solid End Pnls End Panel Finish: Smith System Paint CHL - CHARCOAL SMITH SYST Tag For IDEA FACTORY B121 43/29-S	3	621.00	1,863.00
34 <b>SMINC17577</b> - Interchange; 3 inch dual wheel casters-Pack of 4, Locking, Colorful Caster Finish: Smith System Plastic PLATINUM - Platinum SMITH SYST Tag For IDEA FACTORY B121 T-2/CSTR-2	6	76.80	460.80
35 <b>SMOODLE31</b> - Oodle; Stool-Stack of 3, With 1 movement disc Oodle Finish: Smith System Plastic CHARCOAL - Charcoal SMITH SYST Tag For IDEA FACTORY B121 S-6B	6	157.20	943.20
36 <b>SMOODLE31</b> - Oodle; Stool-Stack of 3, With 1 movement disc Oodle Finish: Smith System Plastic ORANGE - Orange SMITH SYST Tag For IDEA FACTORY B121 S-6A	6	157.20	943.20
37 <b>SMOODLE31</b> - Oodle; Stool-Stack of 3, With 1 movement disc Oodle Finish: Smith System Plastic PLATINUM - Platinum SMITH SYST Tag For IDEA FACTORY B121 S-6C	6	157.20	943.20
38 <b>SMPLN25212BUTCHER</b> - Planner; Studio-Butcher table, Fixed height, With casters, 36D x 72W x 29H Leg Finish: SMITH SYSTEM PAINT OR - ORANGE	2	1,371.00	2,742.00

TITLE OF PRODUCT TRANSFERS UPON RECEIPT BY CUSTOMER.

ACCEPTED BY \_\_\_\_\_ TITLE \_\_\_\_\_ DATE \_\_\_\_\_



Description	Quantity	Unit Price	Extended Price
38 SMITH SYST Tag For IDEA FACTORY B121 T-3			
39 <b>SMPLN25271BUTCHER</b> - Planner; Studio-Single bench, Butcher block, For 72W table, 12D x 58W Leg Finish: SMITH SYSTEM PAINT OR - ORANGE SMITH SYST Tag For IDEA FACTORY B121 S-5	4	729.60	2,918.40
<b>Sub Total</b>			16,631.53
<b>Total</b>			<b>16,631.53</b>
40 <b>LOT - LAMINATE UPCHARGE</b> 494360 CLASSIC LINEN HIGH GLOSS SMITH SYST	1	419.38	419.38
41 <b>LOT - PROJECT MANAGEMENT FEES</b> 32 HOURS X \$85 NBS TROY	1	2,720.00	2,720.00
42 <b>LOT - NON UNION STRAIGHT TIME LABOR TO RECEIVE AND DELIVER NEW PRODUCT TO THE JOB SITE</b>  ALL WORK TO BE DONE AT ONE TIME ROSE MOVIN	1	1,591.00	1,591.00
43 <b>LOT - NON UNION STRAIGHT TIME LABOR TO INSTALL NEW PRODUCT PER PRINT</b>  ALL WORK TO BE DONE AT ONE TIME  PRICING DOES NOT INCLUDE THE REMOVAL OF EXISTING PRODUCT  CLEAR AND READY SPACE INCLUDES DEBRIS REMOAVL ROSE MOVIN	1	8,451.00	8,451.00
44 <b>LOT - NON UNION LABOR OVERTIME DIFFERENTIAL</b>  WILL BE INVOICED IF REQUIRED ROSE MOVIN	1	2,912.00	2,912.00
45 <b>MONTHLY - MONTHLY STORAGE FEES TO HOLD FURNITURE AT WAREHOUSE.</b>  WILL BE INVOICED MONTHLY FOR THE MONTHS USED - NOT TO EXCEED FIGURE ROSE MOVIN	4	911.00	3,644.00

TITLE OF PRODUCT TRANSFERS UPON RECEIPT BY CUSTOMER.

ACCEPTED BY \_\_\_\_\_ TITLE \_\_\_\_\_ DATE \_\_\_\_\_



2595 Bellingham • Troy, MI 48083 • 248.823.5400 • 248.823.5401 Fax  
 2211 Old Earhart Rd. Ste.190 • Ann Arbor, MI 48105 • 248.823.5400 • 248.823.5401 Fax  
 3201 Pine Tree Rd. Ste. A • Lansing, MI 48911 • 517.886.0072 • 248.823.5401 Fax  
 5160 Alliance Dr. • Bay City, MI 48706 • 989.895.8574 • 989.895.8545 Fax  
 4 North St. Clair St. • Toledo, OH 43604 • 419.662.2040 • 248.823.5401 Fax

**Quotation 357813**  
 Page 11 / 11 (cont'd)

**yourNBS.com**      **Remit Payments to:** NBS, 6973 Reliable Parkway, Chicago, IL 60686

Description	Quantity	Unit Price	Extended Price
<b>Quotation Totals</b>			
<b>Sub Total</b>			108,194.24
FOMCORE FREIGHT			744.00
SMITH SYST FREIGHT			3,789.00
MEDIA TECH FREIGHT			1,113.00
<b>Grand Total</b>			<b>113,840.24</b>

**End of Quotation**

TITLE OF PRODUCT TRANSFERS UPON RECEIPT BY CUSTOMER.

ACCEPTED BY \_\_\_\_\_ TITLE \_\_\_\_\_ DATE \_\_\_\_\_



2595 Bellingham • Troy, MI 48083 • 248.823.5400 • 248.823.5401 Fax  
 2211 Old Earhart Rd. Ste.190 • Ann Arbor, MI 48105 • 248.823.5400 • 248.823.5401 Fax  
 3201 Pine Tree Rd. Ste. A • Lansing, MI 48911 • 517.886.0072 • 248.823.5401 Fax  
 5160 Alliance Dr. • Bay City, MI 48706 • 989.895.8574 • 989.895.8545 Fax  
 4 North St. Clair St. • Toledo, OH 43604 • 419.662.2040 • 248.823.5401 Fax

**Quotation 357754**

**Quote Date** 01/31/23

**Project** 221078

**Customer** L00002

**Terms** NET 10 DAYS

**Account Representative** MONIQUE DUGAN

**yourNBS.com**

**Remit Payments to:** NBS, 6973 Reliable Parkway, Chicago, IL 60686

**Quote To**

Livonia Public Schools  
 15125 FARMINGTON RD  
 LIVONIA, MI, 48154-5413

**Ship To**

PHILLIP FRANCIS  
 Franklin High School  
 31000 JOY RD  
 MEDIA CENTER  
 LIVONIA, MI, 48150-3916

**Phone** +1 (313) 523-9156

**Phone** +1 (734) 744-2554

pfrancis@livoniapublicschools.org

**Sales Location** Troy

**PO REQUIRED TO PLACE ORDER**

**E&I, OMNIA, PEPPM, TIPS & NCPA CONTRACTS HAVE BEEN APPLIED TO THIS QUOTE**

**PRICING IS VALID FOR 30 DAYS**

**LEAD TIME: 14-16 WEEKS FROM RECEIPT OF PO**

**STRAIGHT TIME NON UNION LABOR HAS BEEN QUOTED**

**ALL PRODUCT TO INSTALL AT THE SAME TIME**

**PRICING DOES NOT INCLUDE THE REMOVAL OR MOVING OF EXISTING PRODUCT**

**IF REQUIRED STORAGE FEES AND OVERTIME DIFFERENTIAL FEES WILL BE INVOICED AS NEEDED**

**30 DAYS OF FREE STORAGE HAS BEEN INCLUDED IN OUR PRICING**

Description	Quantity	Unit Price	Extended Price
<b>CIRCULATION DESK</b>			
1 <b>SMLBR21004</b> - Booktruck, Six Sloping Shelf with Six Book Supports, 18"D x 36"W x 43"H <b>Cart Finish:</b> Smith System Paint NV - NAVY <b>Divider Finish:</b> Smith System Plastic BLACK - BLACK SMITH SYST <b>Tag For</b> CIRCULATION DESK BKT-1	4	447.60	1,790.40
2 <b>ND-75DL-MOB</b> - Nomad Mobile Desk WITH transaction top (LEFT) 24"Dx75"Wx35"H Mobile 29"H worksurface with grommet, Transaction top 35"H,	1	3,823.20	3,823.20

TITLE OF PRODUCT TRANSFERS UPON RECEIPT BY CUSTOMER.

ACCEPTED BY \_\_\_\_\_ TITLE \_\_\_\_\_ DATE \_\_\_\_\_

Description	Quantity	Unit Price	Extended Price
<p><b>2</b>      3mm PVC Edge: Silver Grey                      (5) locking casters.                      ACCENT PANEL A: HPL Front: Wilsonart Lapis Blue D417-60                      PANEL B &amp; C: HPL Formica Greyed Oak 5791-60                      Worksurface D: HPL &amp; T-Top: Nevamar White Fiesta MW550-SD                      Powder Coat: Dove Grey 304                      MEDIA TECH  <b>Tag For</b>      CIRCULATION DESK                                        CD-1</p>			
<p><b>3</b>      <b>MCD-1817 - STEEL CENTER DRAWER</b>                      18"W X 17"D X 2"H                      FINISH: BLACK                      MEDIA TECH  <b>Tag For</b>      CIRCULATION DESK                                        CD-1B</p>	1	192.60	192.60
<p><b>4</b>      <b>WMPS661220-W-LL-P2A - Mobile Pedestal, 2 Box, 1 File Drawers</b>                      14-13/16"W x 20-3/4"D x 27"H                      HPL: Formica Greyed Oak 5791-60                      PVC: Silver Gray C600244                      Pulls: P2 Nickel                      LOCK FINISH: Nickel                      MEDIA TECH  <b>Tag For</b>      CIRCULATION DESK                                        CD-3</p>	1	509.85	509.85
<p><b>5</b>      <b>ND-40BR-MOB - Nomad Book Return</b>                      30"Dx40"Wx29"H, Mobile HPL/3mm PVC top w/ radiused corners,                      book return slot in top, Curved face, steel end frames w/ floating HPL                      panel, 4 locking casters. For use w/ MCD-DBTL1824-24                      Depressible Book Truck (sold separately)                      A: HPL Front: Formica Greyed Oak 5791-PG                      C: HPL End Panel: Formica Greyed Oak 5791-PG                      D: HPL Work Surface: Nevamar White Fiesta MW550-SD                      D: PVC Work Surface: Silver Gray C600244                      E: Powder Coat: Dove Grey 304                      MEDIA TECH  <b>Tag For</b>      CIRCULATION DESK                                        CD-2</p>	1	1,759.05	1,759.05
<p><b>6</b>      <b>MCD-DBTL-1824-24 - Depressible Platform Book Truck,</b>                      18"Dx24.25"Wx24"H HPL construction with 3mm PVC                      edge banding, spring-loaded platform lift mechanism.                      HPL: Formica Greyed Oak 5791-PG                      PVC Edge: Silver Grey C600244                      MEDIA TECH  <b>Tag For</b>      CIRCULATION DESK                                        BKT-2</p>	2	1,327.50	2,655.00

TITLE OF PRODUCT TRANSFERS UPON RECEIPT BY CUSTOMER.

ACCEPTED BY \_\_\_\_\_ TITLE \_\_\_\_\_ DATE \_\_\_\_\_

yourNBS.com

Remit Payments to: NBS, 6973 Reliable Parkway, Chicago, IL 60686

Description	Quantity	Unit Price	Extended Price
<b>Sub Total</b>			10,730.10
<b>Total</b>			<b>10,730.10</b>

FLEX SPACE F125

<b>7</b>	<b>SMEMENTNL2460</b> - Elemental; Table-Nest and fold, With casters, 24D x 60W Worksurface Finish: Smith System Laminate 494360 - CLASSIC LINEN LAMINATE HIGH GLOSS Edge type: 1 1/4in Top w 3/8in Bmp TMld Edge Finish: Smith System T-Mold CHP - CHAMPAGNE T MOLD Leg Finish: Smith System Paint PLT - Platinum Height: EJ - Adjustable Height SMITH SYST <b>Tag For</b> FLEX SPACE F125 T-1	30	667.80	20,034.00
----------	--	----	--------	-----------

<b>8</b>	<b>BXBYARMLESS</b> - AMQ Bixby Chair Armless <b>Cushion:</b> No Cushion <b>Frame Finish:</b> Paint PC03 - Platinum <b>Seat Shell Finish:</b> Plastic PL02 - Sterling Dark <b>Back Shell Finish:</b> Plastic PL03 - Platinum <b>Castors or Glides:</b> Soft Castors <b>Accessories:</b> No Accessory <b>Storage Tray:</b> No Storage Tray AMQ SOLUTI <b>Tag For</b> FLEX SPACE F125 S-2	60	166.52	9,991.20
----------	--	----	--------	----------

<b>Sub Total</b>			30,025.20
<b>Total</b>			<b>30,025.20</b>

LARGE PRESENTATION

<b>9</b>	<b>SMEMENTNL2460</b> - Elemental; Table-Nest and fold, With casters, 24D x 60W Worksurface Finish: Smith System Laminate 494360 - CLASSIC LINEN LAMINATE HIGH GLOSS Edge Type: 1 1/4in Top w 3/8in Bmp TMld Edge Finish: Smith System T-Mold CHP - CHAMPAGNE T MOLD Leg Finish: Smith System Paint PLT - Platinum Height: EJ - Adjustable Height SMITH SYST <b>Tag For</b> LARGE PRESENTATION T-1	20	667.80	13,356.00
----------	---	----	--------	-----------

<b>10</b>	<b>BXBYARMLESS</b> - AMQ Bixby Chair Armless	40	166.52	6,660.80
-----------	--	----	--------	----------

TITLE OF PRODUCT TRANSFERS UPON RECEIPT BY CUSTOMER.

ACCEPTED BY \_\_\_\_\_ TITLE \_\_\_\_\_ DATE \_\_\_\_\_

Description	Quantity	Unit Price	Extended Price
<b>10 Cushion:</b> No Cushion <b>Frame Finish:</b> Paint PC03 - Platinum <b>Seat Shell Finish:</b> Plastic PL02 - Sterling Dark <b>Back Shell Finish:</b> Plastic PL03 - Platinum <b>Castors or Glides:</b> Soft Castors <b>Accessories:</b> No Accessory <b>Storage Tray:</b> No Storage Tray AMQ SOLUTI <b>Tag For</b> LARGE PRESENTATION S-2			
<b>Sub Total</b>			20,016.80
<b>Total</b>			<b>20,016.80</b>

LOUNGE AREAS

<b>11 ETRND - Elbrook Round Table</b> <b>Size Option:</b> Modular <b>Height:</b> Seated <b>Diameter:</b> 36.00000 <b>Top Surface Finish:</b> Woodgrain HPL 2HAW - ASH WENGE (HPL) <b>Edge Finish:</b> Plastic - PG1 6703 - ASH WENGE <b>Base Finish:</b> Smooth Metallic 4799 - PLATINUM METALLIC <b>Wheel Option:</b> With Wheels STEELCASE <b>Tag For</b> LOUNGE AREAS T-2	3	787.74	2,363.22
<b>12 ETSQU - Elbrook Square Table</b> <b>Size Option:</b> Modular <b>Height:</b> Seated <b>Width:</b> 28.00000 <b>Depth:</b> 28.00000 <b>Top Surface Finish:</b> Woodgrain HPL 2HAW - ASH WENGE (HPL) <b>Edge Finish:</b> Plastic - PG1 6703 - ASH WENGE <b>Base Finish:</b> Smooth Metallic 4799 - PLATINUM METALLIC <b>Wheel Option:</b> With Wheels STEELCASE <b>Tag For</b> LOUNGE AREAS T-3	9	749.07	6,741.63

TITLE OF PRODUCT TRANSFERS UPON RECEIPT BY CUSTOMER.

ACCEPTED BY \_\_\_\_\_ TITLE \_\_\_\_\_ DATE \_\_\_\_\_

Description	Quantity	Unit Price	Extended Price
<b>13 83N4272SRTL - FOOTINGS,42DX72W,SOFT RECTANGULAR TOP, HPL</b> <b>RIM PROFILE:</b> <b>VG1009: SOFTENED,WHITE NEBBIA</b> <b>GROMMET:</b> <b>X: NO GROMMET</b> <b>LAMINATE GROUP:</b> <b>GAL2: GALLERY LAMINATE-GRADE 2</b> <b>G1009: WHITE NEBBIA</b> KIMBALL OF <b>Tag For</b> LOUNGE AREAS T-6	4	879.96	3,519.84
<b>14 CBV285228YBKP - FOOTINGS,28DX52WX28H,Y BASE KIT</b> <b>COLUMN PAINT COLOR:</b> <b>501: PLATINUM METALLIC</b> <b>FOOT PAINT COLOR:</b> <b>501: PLATINUM METALLIC</b> KIMBALL OF <b>Tag For</b> LOUNGE AREAS T-6B	4	540.50	2,162.00
<b>15 TS4TWP - Campfire; Table-Personal</b> <b>TOP OPT: *OPT:TOP SELECTION</b> <b>HPL TOP: HPL TOP</b> <b>TOP-SURF: TOP SURFACE</b> <b>LAMINATE: *TOP-SURF:LAMINATE FINISHES</b> <b>2HAT: ACACIA (HPL)</b> STEELCASE <b>Tag For</b> LOUNGE AREAS T-7	6	294.98	1,769.88
<b>16 TS31401CM - Jenny; Chair-No arms, Multiple fabric, Casters</b> <b>INR BACK: 59DD GRADED IN PR. GRP. 4</b> CF STINSON INC - Acct 140021 Purchaser: VENDOR Pattern: MOCCASIN 2.0 Color: SAIL -MOC255 Direction: HORIZONTAL <b>OUT BACK: 59DD GRADED IN PR. GRP. 4</b> CF STINSON INC - Acct 140021 Purchaser: VENDOR Pattern: MOCCASIN 2.0	4	912.46	3,649.84

TITLE OF PRODUCT TRANSFERS UPON RECEIPT BY CUSTOMER.

yourNBS.com

Remit Payments to: NBS, 6973 Reliable Parkway, Chicago, IL 60686

Description	Quantity	Unit Price	Extended Price
<p>16      Color: SAIL -MOC255            Direction: HORIZONTAL  <b>SEAT: 59DH GRADED IN PR. GRP. 8</b>            ARC-COM FABRICS INC            Purchaser: VENDOR            Pattern: SKYE            Color: COCOA #17 -63346            Direction: VERTICAL            STEELCASE  <b>Tag For</b>      LOUNGE AREAS                             S-1A</p>			
<p>17      <b>TS31413M</b> - Jenny; Chair-Round, Low, Multiple fabric  <b>INR BACK: 59DE GRADED IN PR. GRP. 5</b>            CF STINSON INC - Acct 140021            Purchaser: VENDOR            Pattern: AVANT -AV            Color: PAPRIKA -AV115            Direction: HORIZONTAL  <b>OUT BACK: 59DE GRADED IN PR. GRP. 5</b>            CF STINSON INC - Acct 140021            Purchaser: VENDOR            Pattern: AVANT -AV            Color: PAPRIKA -AV115            Direction: HORIZONTAL  <b>SEAT: 59DH GRADED IN PR. GRP. 8</b>            ARC-COM FABRICS INC            Purchaser: VENDOR            Pattern: SKYE            Color: COCOA #17 -63346            Direction: VERTICAL            STEELCASE  <b>Tag For</b>      LOUNGE AREAS                             S-1B</p>	11	1,167.45	12,841.95
<p>18      <b>BXBYARMLESS</b> - AMQ Bixby Chair Armless  <b>Cushion:</b> No Cushion  <b>Frame Finish:</b> Paint PC03 - Platinum  <b>Seat Shell Finish:</b> Plastic PL02 - Sterling Dark  <b>Back Shell Finish:</b> Plastic PL03 - Platinum  <b>Castors or Glides:</b> Soft Castors  <b>Accessories:</b> No Accessory  <b>Storage Tray:</b> No Storage Tray            AMQ SOLUTI  <b>Tag For</b>      LOUNGE AREAS                             S-2</p>	18	166.52	2,997.36

TITLE OF PRODUCT TRANSFERS UPON RECEIPT BY CUSTOMER.

ACCEPTED BY \_\_\_\_\_ TITLE \_\_\_\_\_ DATE \_\_\_\_\_



Description	Quantity	Unit Price	Extended Price
<p>19 <b>N93M2OMX - FRINGE,MID BACK,2 SEAT,CLEAN-OUT, ARMLESS,CONTRAST</b>  <b>BACK UPHOLSTERY GRADE:</b>  <b>CFSD:</b> CF STINSON GRADE D  <b>CRS_53:</b> CRISS CROSS BRICK  <b>LUMBAR UPHOLSTERY GRADE:</b>  <b>CFSD:</b> CF STINSON GRADE D  <b>CRS_53:</b> CRISS CROSS BRICK  <b>EXTREME BACK UPH GRADE:</b>  <b>CFSD:</b> CF STINSON GRADE D  <b>CRS_53:</b> CRISS CROSS BRICK  <b>SEAT UPHOLSTERY GRADE:</b>  <b>COM:</b> CUSTOMER'S OWN MATERIAL  <b>SPECIAL:</b> SEAT UPHOLSTERY PATTERN COLOR  <b>FRONT SEAT GROMMET:</b>  <b>X:</b> NO FRONT SEAT GROMMET  <b>LEG MATERIAL/FINISH:</b>  <b>501:</b> METAL LEG,PLATINUM METALLIC  <b>GLIDE:</b>  <b>STD:</b> STANDARD GLIDE                      KIMBALL OF  <b>Tag For</b> LOUNGE AREAS                      S-3</p>	2	1,804.12	3,608.24
<p>20 <b>N93M3OMX - FRINGE,MID BACK,3 SEAT,CLEAN-OUT, ARMLESS,CONTRAST</b>  <b>BACK UPHOLSTERY GRADE:</b>  <b>CFSD:</b> CF STINSON GRADE D  <b>CRS_53:</b> CRISS CROSS BRICK  <b>LUMBAR UPHOLSTERY GRADE:</b>  <b>CFSD:</b> CF STINSON GRADE D  <b>CRS_53:</b> CRISS CROSS BRICK  <b>EXTREME BACK UPH GRADE:</b>  <b>CFSD:</b> CF STINSON GRADE D  <b>CRS_53:</b> CRISS CROSS BRICK  <b>SEAT UPHOLSTERY GRADE:</b>  <b>COM:</b> CUSTOMER'S OWN MATERIAL  <b>SPECIAL:</b> SEAT UPHOLSTERY PATTERN COLOR</p>	3	2,446.28	7,338.84

TITLE OF PRODUCT TRANSFERS UPON RECEIPT BY CUSTOMER.

ACCEPTED BY \_\_\_\_\_ TITLE \_\_\_\_\_ DATE \_\_\_\_\_

Description	Quantity	Unit Price	Extended Price
<p>20 <b>FRONT SEAT GROMMET:</b>                      X: NO FRONT SEAT GROMMET  <b>LEG MATERIAL/FINISH:</b>                      501: METAL LEG,PLATINUM METALLIC  <b>GLIDE:</b>                      STD: STANDARD GLIDE                      KIMBALL OF                      Tag For LOUNGE AREAS                      S-4A</p>			
<p>21 <b>N93M3OMX - FRINGE,MID BACK,3 SEAT,CLEAN-OUT, ARMLESS,CONTRAST</b>  <b>BACK UPHOLSTERY GRADE:</b>                      COM: CUSTOMER'S OWN MATERIAL                      SPECIAL: BACK UPHOLSTERY PATTERN COLOR  <b>LUMBAR UPHOLSTERY GRADE:</b>                      COM: CUSTOMER'S OWN MATERIAL                      SPECIAL: LUMBAR UPHOLSTERY PATTERN COLO  <b>EXTREME BACK UPH GRADE:</b>                      COM: CUSTOMER'S OWN MATERIAL                      SPECIAL: EXTREME BACK UPH PATTERN COLOR  <b>SEAT UPHOLSTERY GRADE:</b>                      COM: CUSTOMER'S OWN MATERIAL                      SPECIAL: SEAT UPHOLSTERY PATTERN COLOR  <b>FRONT SEAT GROMMET:</b>                      X: NO FRONT SEAT GROMMET  <b>LEG MATERIAL/FINISH:</b>                      501: METAL LEG,PLATINUM METALLIC  <b>GLIDE:</b>                      C10: SOFT GLIDE                      KIMBALL OF                      Tag For LOUNGE AREAS                      S-4B</p>	8	2,164.76	17,318.08
<p>22 <b>N93MOUR9X - FRINGE,MID BACK,OUTSIDE ROUND 90 DEGREE, CONTRAST</b>  <b>BACK UPHOLSTERY GRADE:</b>                      CFSD: CF STINSON GRADE D                      CRS_53: CRISS CROSS BRICK  <b>LUMBAR UPHOLSTERY GRADE:</b></p>	1	2,064.94	2,064.94

TITLE OF PRODUCT TRANSFERS UPON RECEIPT BY CUSTOMER.

Description	Quantity	Unit Price	Extended Price
22 <b>CFSD: CF STINSON GRADE D</b> <b>CRS_53: CRISS CROSS BRICK</b> <b>EXTREME BACK UPH GRADE:</b> <b>CFSD: CF STINSON GRADE D</b> <b>CRS_53: CRISS CROSS BRICK</b> <b>SEAT UPHOLSTERY GRADE:</b> <b>COM: CUSTOMER'S OWN MATERIAL</b> <b>SPECIAL: SEAT UPHOLSTERY PATTERN COLOR</b> <b>LEG MATERIAL/FINISH:</b> <b>501: METAL LEG,PLATINUM METALLIC</b> <b>GLIDE:</b> <b>STD: STANDARD GLIDE</b> KIMBALL OF <b>Tag For</b> LOUNGE AREAS S-5			
23 <b>N93GB2 - FRINGE,GANGING CONNECTOR BRACKET, SET OF 2</b> KIMBALL OF <b>Tag For</b> LOUNGE AREAS GB	5	45.54	227.70
24 <b>VCBCO120HP - Common-BENCH,RECT,47.24x23.62 H26.97</b> <b>Upholstery Finish: ATL60141 - Atlantic 60141</b> <b>Glides Option: Plastic</b> <b>Fire Retardant: CAL TB117-2013</b> <b>SKU: CO120HP-2</b> STEELCASE <b>Tag For</b> LOUNGE AREAS S-6	2	2,176.13	4,352.26
25 <b>8308/2FO - RAVEN 30 DEGREE INSIDE CURVE MODULAR UNIT</b> SEAT HT. 18" BACK HT. 33" LEGS POWDERCOAT: BRUSHED ALUMINUM BACK: CF STINSON POLYGON MARIANA POL20 FABRIC DIRECTION: RAILROAD OR OFF THE BOLT TBD SEAT: CF STINSON CORE 2.0 BLUEBERRY CRE261 FABRIC DIRECTION: RAILROAD OR OFF THE BOLT TBD +/-NON-GANGING UNIT ERG INTERN <b>Tag For</b> LOUNGE AREAS S-7	17	1,355.83	23,049.11
26 <b>8314/2FO - RAVEN 30 DEGREE OUTSIDE CURVE MODULAR UNIT</b> SEAT HT. 18" TITLE OF PRODUCT TRANSFERS UPON RECEIPT BY CUSTOMER.	1	1,459.71	1,459.71

Description	Quantity	Unit Price	Extended Price
<p>26 BACK HT. 33"                      LEGS POWDERCOAT: BRUSHED ALUMINUM                      BACK: CF STINSON POLYGON MARIANA POL20                      FABRIC DIRECTION: RAILROAD OR OFF THE BOLT TBD                      SEAT: CF STINSON CORE 2.0 BLUEBERRY CRE261                      FABRIC DIRECTION: RAILROAD OR OFF THE BOLT TBD                      +/NON-GANGING UNIT                      ERG INTERN                      Tag For LOUNGE AREAS                      S-8</p>			
<p>27 8334 - RAVEN 30 DEGREE BACKLESS CURVED MODULAR UNIT                      SEAT HT. 18"                      SEAT DEPTH 27"                      LEGS POWDERCOAT: BRUSHED ALUMINUM                      SEAT/SIDES: CF STINSON CORE 2.0 BLUEBERRY CRE261                      FABRIC DIRECTION: RAILROAD OR OFF THE BOLT TBD                      +/NON-GANGING UNIT                      ERG INTERN                      Tag For LOUNGE AREAS                      S-9</p>	3	1,087.80	3,263.40
<p>28 GD2 - FLAT GANGING DEVICE                      ERG INTERN</p>	20	52.43	1,048.60
<p>29 N66RD48CL - WHIMSY,48DIA ROUND,MOBILE,LAMINATE TOP                      LAMINATE:                      G1009: WHITE NEBBIA                      UPHOLSTERY GRADE:                      CFSB: CF STINSON GRADE B                      AVA_115: AVANT PAPRIKA                      KIMBALL OF                      Tag For LOUNGE AREAS                      OTT-1</p>	4	1,012.36	4,049.44
<p>30 N66RD48CL - WHIMSY,48DIA ROUND,MOBILE,LAMINATE TOP                      LAMINATE:                      G1009: WHITE NEBBIA                      UPHOLSTERY GRADE:                      CFSB: CF STINSON GRADE B                      MOC_55: MOCCASIN SAIL                      KIMBALL OF                      Tag For LOUNGE AREAS                      OTT-2</p>	3	1,012.36	3,037.08

TITLE OF PRODUCT TRANSFERS UPON RECEIPT BY CUSTOMER.

ACCEPTED BY \_\_\_\_\_ TITLE \_\_\_\_\_ DATE \_\_\_\_\_

yourNBS.com

Remit Payments to: NBS, 6973 Reliable Parkway, Chicago, IL 60686

Description	Quantity	Unit Price	Extended Price
<b>Sub Total</b>			106,863.12
<b>Total</b>			<b>106,863.12</b>

**PATRIOT ROOM**

<b>31</b>	<b>SMEMTNL2460</b> - Elemental; Table-Nest and fold, With casters, 24D x 60W Worksurface Finish: Smith System Laminate 494360 - CLASSIC LINEN LAMINATE HIGH GLOSS Edge Type: 1 1/4in Top w 3/8in Bmp TMId Edge Finish: Smith System T-Mold CHP - CHAMPAGNE T MOLD Leg Finish: Smith System Paint PLT - Platinum Height: EJ - Adjustable Height SMITH SYST <b>Tag For</b> PATRIOT ROOM T-1	6	667.80	4,006.80
<b>32</b>	<b>SAP361586-1/P</b> - CABINET CRB2400 36"W X 42"H X 22"D CUSTOMIZED TO HAVE STAINLESS STEEL TOP WITH SAFETY J, TOP SPLIT DRAWERS OVER DOUBLE DOORS, 1-ADJUSTABLE SHELF, CASTERS, LOCKING, FINISHED ON BOTH ENDS HPL: LOVE LETTERS EDGE: PEPPERDUST WB MANUF <b>Tag For</b> PATRIOT ROOM T-8	5	2,518.00	12,590.00
<b>33</b>	<b>COUNTER</b> - COUNTER/STORAGE AREA FOR PATRIOT ROOM WB MANUF <b>Tag For</b> PATRIOT ROOM	1	4,000.00	4,000.00
<b>34</b>	<b>ETRND</b> - Elbrook Round Table <b>Size Option:</b> Modular <b>Height:</b> Seated <b>Diameter:</b> 36.00000 <b>Top Surface Finish:</b> Woodgrain HPL 2HAW - ASH WENGE (HPL) <b>Edge Finish:</b> Plastic - PG1 6703 - ASH WENGE <b>Base Finish:</b> Smooth Metallic 4799 - PLATINUM METALLIC <b>Wheel Option:</b> With Wheels STEELCASE <b>Tag For</b> PATRIOT ROOM T-2	3	787.74	2,363.22
<b>35</b>	<b>83N4272SRTL</b> - FOOTINGS,42DX72W,SOFT RECTANGULAR TOP, HPL	2	879.96	1,759.92

TITLE OF PRODUCT TRANSFERS UPON RECEIPT BY CUSTOMER.

ACCEPTED BY \_\_\_\_\_ TITLE \_\_\_\_\_ DATE \_\_\_\_\_

Description	Quantity	Unit Price	Extended Price
<p>35 <b>RIM PROFILE:</b>  <b>VG1009:</b> SOFTENED,WHITE NEBBIA  <b>GROMMET:</b>  <b>X:</b> NO GROMMET  <b>LAMINATE GROUP:</b>  <b>GAL2:</b> GALLERY LAMINATE-GRADE 2  <b>G1009:</b> WHITE NEBBIA                      KIMBALL OF  <b>Tag For</b> PATRIOT ROOM                      T-6</p>			
<p>36 <b>CBV285228YBKP - FOOTINGS,28DX52WX28H,Y BASE KIT</b>  <b>COLUMN PAINT COLOR:</b>  <b>501:</b> PLATINUM METALLIC  <b>FOOT PAINT COLOR:</b>  <b>501:</b> PLATINUM METALLIC                      KIMBALL OF  <b>Tag For</b> PATRIOT ROOM                      T-6B</p>	2	540.50	1,081.00
<p>37 <b>BXBYARMLESS - AMQ Bixby Chair Armless</b>  <b>Cushion:</b> No Cushion  <b>Frame Finish:</b> Paint PC03 - Platinum  <b>Seat Shell Finish:</b> Plastic PL02 - Sterling Dark  <b>Back Shell Finish:</b> Plastic PL03 - Platinum  <b>Castors or Glides:</b> Soft Castors  <b>Accessories:</b> No Accessory  <b>Storage Tray:</b> No Storage Tray                      AMQ SOLUTI  <b>Tag For</b> PATRIOT ROOM                      S-2</p>	12	166.52	1,998.24
<p>38 <b>N93M3OMX - FRINGE,MID BACK,3 SEAT,CLEAN-OUT, ARMLESS,CONTRAST</b>  <b>BACK UPHOLSTERY GRADE:</b>  <b>COM:</b> CUSTOMER'S OWN MATERIAL  <b>SPECIAL:</b> BACK UPHOLSTERY PATTERN COLOR  <b>LUMBAR UPHOLSTERY GRADE:</b>  <b>COM:</b> CUSTOMER'S OWN MATERIAL  <b>SPECIAL:</b> LUMBAR UPHOLSTERY PATTERN COLO  <b>EXTREME BACK UPH GRADE:</b></p>	4	2,164.76	8,659.04

TITLE OF PRODUCT TRANSFERS UPON RECEIPT BY CUSTOMER.



2595 Bellingham • Troy, MI 48083 • 248.823.5400 • 248.823.5401 Fax  
 2211 Old Earhart Rd. Ste.190 • Ann Arbor, MI 48105 • 248.823.5400 • 248.823.5401 Fax  
 3201 Pine Tree Rd. Ste. A • Lansing, MI 48911 • 517.886.0072 • 248.823.5401 Fax  
 5160 Alliance Dr. • Bay City, MI 48706 • 989.895.8574 • 989.895.8545 Fax  
 4 North St. Clair St. • Toledo, OH 43604 • 419.662.2040 • 248.823.5401 Fax

**Quotation 357754**  
 Page 13 / 19 (cont'd)

yourNBS.com

Remit Payments to: NBS, 6973 Reliable Parkway, Chicago, IL 60686

Description	Quantity	Unit Price	Extended Price
<b>38</b> <b>COM:</b> CUSTOMER'S OWN MATERIAL <b>SPECIAL:</b> EXTREME BACK UPH PATTERN COLOR <b>SEAT UPHOLSTERY GRADE:</b> <b>COM:</b> CUSTOMER'S OWN MATERIAL <b>SPECIAL:</b> SEAT UPHOLSTERY PATTERN COLOR <b>FRONT SEAT GROMMET:</b> <b>X:</b> NO FRONT SEAT GROMMET <b>LEG MATERIAL/FINISH:</b> <b>501:</b> METAL LEG,PLATINUM METALLIC <b>GLIDE:</b> <b>C10:</b> SOFT GLIDE KIMBALL OF <b>Tag For</b> PATRIOT ROOM S-4B			
<b>39</b> <b>COSFZCH - Montara650; Chair</b> <b>Upholstery Version:</b> Upholstered Seat Wood Back <b>Seat Finish:</b> Stand In 5744 - BLUEBERRY <b>Shell Finish:</b> Rift Cut/Low Sheen VP05 - WHITE OAK <b>Base Finish:</b> Smooth Paint 4141 - PLATINUM MATTE <b>Base Type:</b> Sled <b>Fabric Backer:</b> Backer Not Required COALESS <b>Tag For</b> PATRIOT ROOM S-10	9	497.50	4,477.50
<b>40</b> <b>TS30702 - Scoop; Stool, Upholstered seat pad</b> <b>LEGS:</b> 4799 PLATINUM METALLIC <b>PLASTIC:</b> 6618 WHITE <b>UPHLSTRY:</b> 5999 MISC FABRIC CF STINSON INC - Acct 140021 Purchaser: VENDOR Pattern: VECTOR -VEC Color: BLUE -17 Direction: VERTICAL STEELCASE <b>Tag For</b> PATRIOT ROOM ST-2	6	295.84	1,775.04
<b>Sub Total</b>			42,710.76
<b>Total</b>			<b>42,710.76</b>

TITLE OF PRODUCT TRANSFERS UPON RECEIPT BY CUSTOMER.

ACCEPTED BY \_\_\_\_\_ TITLE \_\_\_\_\_ DATE \_\_\_\_\_

Description	Quantity	Unit Price	Extended Price
<b>TECHNOLOGY AREA</b>			
<b>41 SMEMTEL3636</b> - Elemental; Table-Square, 36D x 36W Worksurface Finish: Smith System Laminate 494360 - CLASSIC LINEN LAMINATE HIGH GLOSS Edge Type: 1 1/4in Top w 3/8in Bmp TMld Edge Finish: Smith System T-Mold CHP - CHAMPAGNE T MOLD Leg Finish: Smith System Paint PLT - Platinum Height: EC - Fixed Height for Caster SMITH SYST <b>Tag For</b> TECHNOLOGY AREA T-4	5	243.60	1,218.00
<b>42 SMINC17576</b> - Interchange; 3 inch dual wheel casters-Pack of 4, Locking SMITH SYST <b>Tag For</b> TECHNOLOGY AREA T-4/CSTR	5	61.20	306.00
<b>43 FLXWTH</b> - Flex; Work table-Rectangle, Standing height <b>Depth:</b> 23.00000 <b>Width:</b> 58.00000 <b>Top Surface Finish:</b> Woodgrain HPL 2HAW - ASH WENGE (HPL) <b>Edge Finish:</b> Plastic - PG1 6703 - ASH WENGE <b>Frame Finish:</b> Smooth Metallic 4799 - PLATINUM METALLIC <b>Peg Finish:</b> Smooth Metallic 4799 - PLATINUM METALLIC <b>Footrest Finish:</b> Smooth Metallic 4799 - PLATINUM METALLIC <b>Wheels or Glides Finish:</b> Plastic - PG1 6527 - MERLE <b>Cable Catch:</b> No Cable Catch <b>Mobility:</b> Mobile - 2 Glides and 2 Wheels <b>Core Options:</b> Standard Core STEELCASE <b>Tag For</b> TECHNOLOGY AREA T-5	8	1,058.06	8,464.48
<b>44 BXBYARMLESS</b> - AMQ Bixby Chair Armless <b>Cushion:</b> No Cushion <b>Frame Finish:</b> Paint PC03 - Platinum <b>Seat Shell Finish:</b> Plastic PL02 - Sterling Dark <b>Back Shell Finish:</b> Plastic PL03 - Platinum <b>Castors or Glides:</b> Soft Castors <b>Accessories:</b> No Accessory <b>Storage Tray:</b> No Storage Tray	20	166.52	3,330.40

TITLE OF PRODUCT TRANSFERS UPON RECEIPT BY CUSTOMER.



Description	Quantity	Unit Price	Extended Price
44 AMQ SOLUTI Tag For TECHNOLOGY AREA S-2			
45 <b>1011FT1.PSS2</b> - Lumin, 30" Bar Stool, Plastic Seat & Back, Armless <b>Frame Information:</b> FC2: Silver Frame <b>Plastic Shell Color Selection:</b> SC5: Navy ~: No Selection <b>Glide Option Selection:</b> GL1: Standard Multi-Surface Glide <b>Packaging Options:</b> AB: Fully Assembled in a Bag EXEMPLIS Tag For TECHNOLOGY AREA ST-1	16	228.00	3,648.00
<b>Sub Total</b>			16,966.88
<b>Total</b>			<b>16,966.88</b>

**BOOK STACKS**

46 <b>DWUW2081-SP-ADA</b> - Double Walk Up Free Standing ADA Compliant Computer Workstation 96"W x 20"D x 36+"H  Consisting of: Center storage module at 32"W x 13"H+ with 2 locking doors with a 32"W surface extending off the bottom RH/LH side (one of each) of cabinet & another off the top on the opposite side  2-Wire management grommets in the surface to coordinate with a series of wire management access holes/channels across the back of the station to conceal all wires.  Filler section 16+"D included between the 2-units along the back edge and at each end to fill space around the 2-columns. Workstations & filler section have recessed reveal detail as needed. Inset Reveal & Doors: Wilsonart Magnolia 5012-60 Exterior Shell: Wilsonart Island D498 PVC Edge: White Pulls: Rod Style Brushed Nickel Finishes as noted or equal, based on location +/-Field measure required to verify site dimensions/conditions and create template	1	12,413.33	12,413.33
--	---	-----------	-----------

TITLE OF PRODUCT TRANSFERS UPON RECEIPT BY CUSTOMER.

Description	Quantity	Unit Price	Extended Price
46 PRIMEWAY <b>Tag For</b> BOOK STACKS WALK-UP			
47 <b>CUSTOM</b> - Primeway Mobile Book Return Cart 31" x 24" x 24" high Cart is on 4 industrial casters, is a box with an open top, closed on sides and bottom, fixed rod style pull on the face and depressible shelf on the inside, that lowers as books build up on the shelf. Shelf has white foam pad on top to ease impact of books. Front 2 casters, on pull side have a brake if needed. Laminate: Formica Greyed Oak 5791-PG Edge: Primeway standard vinyl Pulls: 4" Elliptical Wire Pulls in Matte Nickel PRIMEWAY <b>Tag For</b> BOOK STACKS BKRTN	1	1,643.87	1,643.87
48 <b>CUSTOM</b> - Primeway Book Return Cart Storage Cabinet 33" x 25" x 36" high Top is inset, on both side and back panels of cabinet. (Gallery Style) False panel on face of cabinet with a slot for inserting books. Closed storage area below the top that houses the mobile book return cart with double doors that will open to allow the cart to roll out. Laminate: Formica Greyed Oak 5791-PG Edge: Primeway standard vinyl Pulls: 4" Elliptical Wire Pulls in Matte Nickel PRIMEWAY <b>Tag For</b> BOOK STACKS BKTK-3	1	1,292.13	1,292.13
49 <b>DISP-4724</b> - Media Technologies Display End Panel, 3 opening, 24"Wx3-1/2"Dx47-1/2"H **to mount on H11-4824 Double Sided Bookcases. HPL/3mm PVC construction HPL: Formica Greyed Oak 5791-PG Interior Back Panel: Wilsonart Lapis Blue D417-60 PVC: Silver Grey C600244 MEDIA TECH <b>Tag For</b> BOOK STACKS DISPLAY	11	706.05	7,766.55
<b>Sub Total</b>			23,115.88
<b>Total</b>			<b>23,115.88</b>
<b>ACOUSTICAL SCREENS</b>			
50 <b>ZTRPAT1018</b> - ZINTRA WAMIKA PATTERN 48" X 108" X 1/2" TOP COLOR- GREIGE DIMS W X H->48"W X 108"H ZINTRA PANEL ORIENTATION->PORTRAIT	11	892.86	9,821.46

TITLE OF PRODUCT TRANSFERS UPON RECEIPT BY CUSTOMER.

ACCEPTED BY \_\_\_\_\_ TITLE \_\_\_\_\_ DATE \_\_\_\_\_

yourNBS.com

Remit Payments to: NBS, 6973 Reliable Parkway, Chicago, IL 60686

Description	Quantity	Unit Price	Extended Price
50 M D C WALL Tag For ACOUSTICAL SCREENS SCR-1			
51 ZTRHDW1021 - 8' DOUBLE RAIL TRACK ZINTRA ALUMINUM SYSTEM M D C WALL Tag For ACOUSTICAL SCREENS SCR-1	13	142.86	1,857.18
52 ZTRHDW1022 - ZINTRA PANEL FIXING HARDWARE FOR SLIDING TRACK SYSTEM M D C WALL Tag For ACOUSTICAL SCREENS SCR-1	11	285.71	3,142.81
53 ZINTRAWSD - ZINTRA WORKSHOP DRAWING DIMS W X H->(8)48"W X 108"H BASE COLOR->TBD TOP COLOR->N/A DESIGN->MONSOON PATTERN M D C WALL Tag For ACOUSTICAL SCREENS	3	279.00	837.00
<b>Sub Total</b>			15,658.45
<b>Total</b>			15,658.45

**NORTH CAFETERIA**

54 TS30702 - Scoop; Stool, Upholstered seat pad LEGS: 4799 PLATINUM METALLIC PLASTIC: 6618 WHITE UPHLLSTRY: 5999 MISC FABRIC CF STINSON INC - Acct 140021 Purchaser: VENDOR Pattern: VECTOR -VEC Color: BLUE -17 Direction: VERTICAL STEELCASE Tag For NORTH CAFETERIA ST-2	18	295.84	5,325.12
<b>Sub Total</b>			5,325.12
<b>Total</b>			5,325.12

**SOUTH CAFETERIA  
ST-2**

55 TS30702 - Scoop; Stool, Upholstered seat pad	12	295.84	3,550.08
---	----	--------	----------

TITLE OF PRODUCT TRANSFERS UPON RECEIPT BY CUSTOMER.

ACCEPTED BY \_\_\_\_\_ TITLE \_\_\_\_\_ DATE \_\_\_\_\_

yourNBS.com

Remit Payments to: NBS, 6973 Reliable Parkway, Chicago, IL 60686

Description	Quantity	Unit Price	Extended Price
<b>55</b> <b>LEGS:</b> 4799 PLATINUM METALLIC <b>PLASTIC:</b> 6618 WHITE <b>UPHOLSTRY:</b> 5999 MISC FABRIC CF STINSON INC - Acct 140021 Purchaser: VENDOR Pattern: VECTOR -VEC Color: BLUE -17 Direction: VERTICAL STEELCASE <b>Tag For</b> SOUTH CAFETERIA ST-2			
<b>Sub Total</b>			3,550.08
<b>Total</b>			<b>3,550.08</b>
<b>56</b> <b>UPCHARGE - UPCHARGE FOR PREMIUM LAMINATE</b> FORMICA GREYED OAK 5791-PG MEDIA TECH	1	334.12	334.12
<b>58</b> <b>LOT - LAMINATE UPCHARGE</b> CLASSIC LINEN HIGH GLOSS SMITH SYST	1	936.35	936.35
<b>59</b> <b>LOT - PROJECT MANAGEMENT FEES</b> 32 HOURS X \$85 NBS TROY	1	2,720.00	2,720.00
<b>60</b> <b>LOT - NON UNION STRAIGHT TIME LABOR TO RECEIVE AND</b> DELIVER NEW PRODUCT TO THE JOB SITE  ALL WORK TO BE DONE AT ONE TIME ROSE MOVIN	1	3,318.00	3,318.00
<b>61</b> <b>LOT - NON UNION STRAIGHT TIME LABOR TO INSTALL NEW</b> PRODUCT PER PRINT  ALL WORK TO BE DONE AT ONE TIME  PRICING DOES NOT INCLUDE THE REMOVAL OF EXISTING PRODUCT  CLEAR AND READY SPACE INCLUDES DEBRIS REMOAVL ROSE MOVIN	1	17,719.00	17,719.00
<b>62</b> <b>LOT - NON UNION LABOR</b> OVERTIME DIFFERENTIAL  WILL BE INVOICED IF REQUIRED ROSE MOVIN	1	6,448.00	6,448.00

TITLE OF PRODUCT TRANSFERS UPON RECEIPT BY CUSTOMER.

ACCEPTED BY \_\_\_\_\_ TITLE \_\_\_\_\_ DATE \_\_\_\_\_



2595 Bellingham • Troy, MI 48083 • 248.823.5400 • 248.823.5401 Fax  
 2211 Old Earhart Rd. Ste.190 • Ann Arbor, MI 48105 • 248.823.5400 • 248.823.5401 Fax  
 3201 Pine Tree Rd. Ste. A • Lansing, MI 48911 • 517.886.0072 • 248.823.5401 Fax  
 5160 Alliance Dr. • Bay City, MI 48706 • 989.895.8574 • 989.895.8545 Fax  
 4 North St. Clair St. • Toledo, OH 43604 • 419.662.2040 • 248.823.5401 Fax

**Quotation 357754**  
 Page 19 / 19 (cont'd)

yourNBS.com

Remit Payments to: NBS, 6973 Reliable Parkway, Chicago, IL 60686

Description	Quantity	Unit Price	Extended Price
63 MONTHLY - MONTHLY STORAGE FEES TO HOLD FURNITURE AT WAREHOUSE.  WILL BE INVOICED MONTHLY FOR THE MONTHS USED - NOT TO EXCEED FIGURE ROSE MOVIN	4	1,950.00	7,800.00

Quotation Totals	
<b>Sub Total</b>	314,237.86
MEDIA TECH FREIGHT	1,049.00
M D C WALL FREIGHT	1,402.00
SMITH SYST FREIGHT	5,509.00
STEELCASE COM FABRIC LINE 40	90.00
STEELCASE COM FABRIC LINE 54	248.00
STEELCASE COM FABRIC LINE 55	169.00
WB MANUF FREIGHT	1,500.00
<b>Grand Total</b>	<b>324,204.86</b>

End of Quotation

TITLE OF PRODUCT TRANSFERS UPON RECEIPT BY CUSTOMER.

ACCEPTED BY \_\_\_\_\_ TITLE \_\_\_\_\_ DATE \_\_\_\_\_



2595 Bellingham • Troy, MI 48083 • 248.823.5400 • 248.823.5401 Fax  
 2211 Old Earhart Rd. Ste.190 • Ann Arbor, MI 48105 • 248.823.5400 • 248.823.5401 Fax  
 3201 Pine Tree Rd. Ste. A • Lansing, MI 48911 • 517.886.0072 • 248.823.5401 Fax  
 5160 Alliance Dr. • Bay City, MI 48706 • 989.895.8574 • 989.895.8545 Fax  
 4 North St. Clair St. • Toledo, OH 43604 • 419.662.2040 • 248.823.5401 Fax

**Quotation 357573**

**Quote Date** 01/30/23

**Customer Order**

**Project** 221128

**Customer** L00002

**Terms** NET 10 DAYS

**Expiration Date**

**Account Representative** MONIQUE DUGAN

**yourNBS.com**      **Remit Payments to:** NBS, 6973 Reliable Parkway, Chicago, IL 60686

**Quote To**

Livonia Public Schools  
 15125 FARMINGTON RD  
 LIVONIA, MI, 48154-5413

**Ship To**

PHILLIP FRANCIS  
 Riley Upper Elementary School  
 15555 HENRY RUFF ST  
 MEDIA CENTER  
 LIVONIA, MI, 48154-3240

**Phone** +1 (313) 523-9156

**Phone** +1 (734) 744-2554

pfrancis@livoniapublicschools.org

**Sales Location** Troy

**PO REQUIRED TO PLACE ORDER**

**E&I, OMNIA, TIPS & NCPA CONTRACTS HAVE BEEN APPLIED TO THIS QUOTE**

**PRICING IS VALID FOR 30 DAYS**

**LEAD TIME: 14-16 WEEKS FROM RECEIPT OF PO**

**STRAIGHT TIME NON UNION LABOR HAS BEEN QUOTED**

**ALL PRODUCT TO INSTALL AT THE SAME TIME**

**PRICING DOES NOT INCLUDE THE REMOVAL OR MOVING OF EXISTING PRODUCT**

**IF REQUIRED STORAGE FEES AND OVERTIME DIFFERENTIAL FEES WILL BE INVOICED AS NEEDED**

**30 DAYS OF FREE STORAGE HAS BEEN INCLUDED IN OUR PRICING**

Description	Quantity	Unit Price	Extended Price
-------------	----------	------------	----------------

**BOOK STACKS**

1	<b>N66RD22C - WHIMSY,22DIA ROUND,MOBILE</b> <b>UPHOLSTERY GRADE:</b> <b>ARCD: ARCCOM GRADE D</b> <b>SPCT_69710: SPECTRUM LIME</b> <b>LEATHER PULL:</b> <b>X: NO LEATHER PULL</b> <b>KIMBALL OF</b> <b>Tag For</b> <b>BOOK STACKS</b> <b>OTT-3B</b>	1	498.64	498.64
---	--	---	--------	--------

TITLE OF PRODUCT TRANSFERS UPON RECEIPT BY CUSTOMER.

ACCEPTED BY \_\_\_\_\_ TITLE \_\_\_\_\_ DATE \_\_\_\_\_

Description	Quantity	Unit Price	Extended Price
<b>2 N66RD22C - WHIMSY,22DIA ROUND,MOBILE</b> <b>UPHOLSTERY GRADE:</b> <b>CFSB: CF STINSON GRADE B</b> <b>AVA_149: AVANT DARK PURPLE</b> <b>LEATHER PULL:</b> <b>X: NO LEATHER PULL</b> KIMBALL OF <b>Tag For</b> BOOK STACKS OTT-3A	1	463.68	463.68
<b>3 SMLBR21004 - Booktruck, Six Sloping Shelf with Six Book Supports,</b> 18"D x 36"W x 43"H <b>Cart Finish:</b> Smith System Paint PR - PURPLE <b>Divider Finish:</b> Smith System Plastic BLACK - BLACK SMITH SYST <b>Tag For</b> BOOK STACKS BKTK-1	4	447.60	1,790.40
<b>4 DISP-4724 - Media Technologies Display End Panel, 3 opening,</b> 24"Wx3-1/2"Dx47-1/2"H **to mount on H11-4824 Double Sided Bookcases. HPL/3mm PVC construction HPL: Formica Greyed Oak 5791-PG Interior Back Panel: Wilsonart Eggplant 4913 PVC: Silver Grey C600244 MEDIA TECH <b>Tag For</b> BOOK STACKS DISPLAY	11	706.05	7,766.55
<b>5 TS34403 - Alight; Ottoman-Bench</b> <b>UPHOLSTRY:</b> 5999 MISC FABRIC CF STINSON INC - Acct 140021 Purchaser: VENDOR Pattern: ORIGAMI -OGI Color: PINWHEEL -34 Direction: VERTICAL <b>LEG OPT:</b> *OPT:LEG OPTIONS <b>ALUMINUM:</b> STD:ALUMINUM LEGS STEELCASE <b>Tag For</b> BOOK STACKS S-10	4	471.04	1,884.16

**Sub Total** 12,403.43

**Total** 12,403.43

FLEX SPACE F119

TITLE OF PRODUCT TRANSFERS UPON RECEIPT BY CUSTOMER.

ACCEPTED BY \_\_\_\_\_ TITLE \_\_\_\_\_ DATE \_\_\_\_\_

Description	Quantity	Unit Price	Extended Price
<b>6 BXBYARMLESS - AMQ Bixby Chair Armless</b> <b>Cushion:</b> No Cushion <b>Frame Finish:</b> Paint PC03 - Platinum <b>Seat Shell Finish:</b> Plastic PL02 - Sterling Dark <b>Back Shell Finish:</b> Plastic PL03 - Platinum <b>Castors or Glides:</b> Soft Castors <b>Accessories:</b> No Accessory <b>Storage Tray:</b> No Storage Tray AMQ SOLUTI <b>Tag For</b> FLEX SPACE F119 S-2	32	166.52	5,328.64
<b>7 SMEMTNL2460 - Elemental; Table-Nest and fold, With casters, 24D x 60W</b> Worksurface Finish: Smith System Laminate 494360 - CLASSIC LINEN HIGH GLOSS Edge Type: 1 1/4in Top w 3/8in Bmp TMld Edge Finish: Smith System T-Mold CHP - CHAMPAGNE T MOLD Leg Finish: Smith System Paint PLT - Platinum Height: EJ - Adjustable Height SMITH SYST <b>Tag For</b> FLEX SPACE F119 T-1	16	667.80	10,684.80
<b>Sub Total</b>			16,013.44
<b>Total</b>			<b>16,013.44</b>
<b>LOUNGE AREA 1</b>			
<b>8 7372/FR - BRIGHTON 30 DEGREE CURVED 3-STEP UNIT</b> STEP 1 HT: 14" STEP 2 HT: 24" STEP 3 HT: 30" OVERALL WIDTH: 62" D-BACK: CF STINSON AVANT DARK PURPLE AV149 FABRIC DIRECTION: RAILROAD OR OFF THE BOLT TBD A-STEPS: CF STINSON AVANT DARK PURPLE AV149 FABRIC DIRECTION: RAILROAD OR OFF THE BOLT TBD C-SIDES: CF STINSON AVANT DARK PURPLE AV149 FABRIC DIRECTION: RAILROAD OR OFF THE BOLT TBD ERG INTERN <b>Tag For</b> LOUNGE AREA 1 S-5	2	2,433.34	4,866.68
<b>9 7372/FR - BRIGHTON 30 DEGREE CURVED 3-STEP UNIT</b> STEP 1 HT: 14" STEP 2 HT: 24" STEP 3 HT: 30"	2	2,520.07	5,040.14

TITLE OF PRODUCT TRANSFERS UPON RECEIPT BY CUSTOMER.

ACCEPTED BY \_\_\_\_\_ TITLE \_\_\_\_\_ DATE \_\_\_\_\_



Description	Quantity	Unit Price	Extended Price
<p>9 OVERALL WIDTH: 62"                      D-BACK: ARCCOM SPECTRUM MOONSTONE #26 AC-69715                      FABRIC DIRECTION: RAILROAD OR OFF THE BOLT TBD                      A-STEPS: ARCCOM SPECTRUM MOONSTONE #26 AC-69715                      FABRIC DIRECTION: RAILROAD OR OFF THE BOLT TBD                      C-SIDES: ARCCOM SPECTRUM MOONSTONE #26 AC-69715                      FABRIC DIRECTION: RAILROAD OR OFF THE BOLT TBD                      ERG INTERN                      Tag For LOUNGE AREA 1                      S-3</p>			
<p>10 7372/FR - BRIGHTON 30 DEGREE CURVED 3-STEP UNIT                      STEP 1 HT: 14"                      STEP 2 HT: 24"                      STEP 3 HT: 30"                      OVERALL WIDTH: 62"                      D-BACK: ARCCOM SPECTRUM AC LIME #21 AC-69710                      FABRIC DIRECTION: RAILROAD OR OFF THE BOLT TBD                      A-STEPS: ARCCOM SPECTRUM AC LIME #21 AC-69710                      FABRIC DIRECTION: RAILROAD OR OFF THE BOLT TBD                      C-SIDES: ARCCOM SPECTRUM AC LIME #21 AC-69710                      FABRIC DIRECTION: RAILROAD OR OFF THE BOLT TBD                      ERG INTERN                      Tag For LOUNGE AREA 1                      S-4</p>	2	2,520.07	5,040.14
<p>11 N66RD16C - WHIMSY,16DIA ROUND,MOBILE                      UPHOLSTERY GRADE:                      ARCD: ARCCOM GRADE D                      SPCT_69710: SPECTRUM LIME                      LEATHER PULL:                      X: NO LEATHER PULL                      KIMBALL OF                      Tag For LOUNGE AREA 1                      OTT-4B</p>	3	421.36	1,264.08
<p>12 N66RD16C - WHIMSY,16DIA ROUND,MOBILE                      UPHOLSTERY GRADE:                      ARCD: ARCCOM GRADE D                      SPCT_69715: SPECTRUM MOONSTONE                      LEATHER PULL:                      X: NO LEATHER PULL                      KIMBALL OF                      Tag For LOUNGE AREA 1                      OTT-4C</p>	3	421.36	1,264.08
<p>13 N66RD16C - WHIMSY,16DIA ROUND,MOBILE</p>	2	392.38	784.76

TITLE OF PRODUCT TRANSFERS UPON RECEIPT BY CUSTOMER.

ACCEPTED BY \_\_\_\_\_ TITLE \_\_\_\_\_ DATE \_\_\_\_\_

Description	Quantity	Unit Price	Extended Price
<b>13 UPHOLSTERY GRADE:</b> <b>CFSB:</b> CF STINSON GRADE B <b>AVA_149:</b> AVANT DARK PURPLE <b>LEATHER PULL:</b> <b>X:</b> NO LEATHER PULL KIMBALL OF <b>Tag For</b> LOUNGE AREA 1 OTT-4A			
<b>14 N66RD22C - WHIMSY,22DIA ROUND,MOBILE</b> <b>UPHOLSTERY GRADE:</b> <b>ARCD:</b> ARCCOM GRADE D <b>SPCT_69710:</b> SPECTRUM LIME <b>LEATHER PULL:</b> <b>X:</b> NO LEATHER PULL KIMBALL OF <b>Tag For</b> LOUNGE AREA 1 OTT-3B	1	498.64	498.64
<b>15 N66RD22C - WHIMSY,22DIA ROUND,MOBILE</b> <b>UPHOLSTERY GRADE:</b> <b>ARCD:</b> ARCCOM GRADE D <b>SPCT_69715:</b> SPECTRUM MOONSTONE <b>LEATHER PULL:</b> <b>X:</b> NO LEATHER PULL KIMBALL OF <b>Tag For</b> LOUNGE AREA 1 OTT-3C	1	498.64	498.64
<b>16 N66RD22C - WHIMSY,22DIA ROUND,MOBILE</b> <b>UPHOLSTERY GRADE:</b> <b>CFSB:</b> CF STINSON GRADE B <b>AVA_149:</b> AVANT DARK PURPLE <b>LEATHER PULL:</b> <b>X:</b> NO LEATHER PULL KIMBALL OF <b>Tag For</b> LOUNGE AREA 1 OTT-3A	2	463.68	927.36
<b>17 N66RD42CL - WHIMSY,42DIA ROUND,MOBILE,LAMINATE TOP</b> <b>LAMINATE:</b> <b>PT:</b> PORTICO	3	865.26	2,595.78

TITLE OF PRODUCT TRANSFERS UPON RECEIPT BY CUSTOMER.

ACCEPTED BY \_\_\_\_\_ TITLE \_\_\_\_\_ DATE \_\_\_\_\_

Description	Quantity	Unit Price	Extended Price
<p>17 <b>UPHOLSTERY GRADE:</b>  <b>CFSB:</b> CF STINSON GRADE B  <b>AVA_149:</b> AVANT DARK PURPLE                      KIMBALL OF  <b>Tag For</b> LOUNGE AREA 1                      OTT-1</p>			
<p>18 <b>N66RD48CL - WHIMSY,48DIA ROUND,MOBILE,LAMINATE TOP</b>  <b>LAMINATE:</b>  <b>PT:</b> PORTICO  <b>UPHOLSTERY GRADE:</b>                      7: GRADE 7  <b>70705:</b> SILICA ETCH MINK                      KIMBALL OF  <b>Tag For</b> LOUNGE AREA 1                      OTT-2</p>	1	1,059.84	1,059.84
<p>19 <b>TS31413M - Jenny; Chair-Round, Low, Multiple fabric</b>  <b>INR BACK:</b> 5999 MISC FABRIC                      CF STINSON INC - Acct 140021                      Purchaser: VENDOR                      Pattern: SILICONE-UPTOWN                      Color: TIDAL -SUP352                      Direction: VERTICAL  <b>OUT BACK:</b> 5999 MISC FABRIC                      CF STINSON INC - Acct 140021                      Purchaser: VENDOR                      Pattern: SILICONE-UPTOWN                      Color: TIDAL -SUP352                      Direction: VERTICAL  <b>SEAT:</b> 5999 MISC FABRIC                      CF STINSON INC - Acct 140021                      Purchaser: VENDOR                      Pattern: AVANT -AV                      Color: DARK PURPLE -AV149                      Direction: VERTICAL                      STEELCASE  <b>Tag For</b> LOUNGE AREA 1                      S-1</p>	8	1,109.52	8,876.16
<p>20 <b>TS4TWP - Campfire; Table-Personal</b>  <b>TOP OPT:</b> *OPT:TOP SELECTION  <b>HPL TOP:</b> HPL TOP  <b>TOP-SURF:</b> TOP SURFACE  <b>OLL01:</b> *TOP-SURF:OLL01 PRICE GROUP 1</p>	4	362.48	1,449.92

TITLE OF PRODUCT TRANSFERS UPON RECEIPT BY CUSTOMER.

Description	Quantity	Unit Price	Extended Price
<b>20</b> <b>2900: MISC LAMINATE</b> STEELCASE CORPORATION Laminate: 2HWA -GREY KINGSWOOD STEELCASE <b>Tag For</b> LOUNGE AREA 1 T-2			
<b>21</b> <b>911500568SR - High Pressure Laminate-61x97, .028" Thick</b> <b>TOP-SURF: 2HWA GREY KINGSWOOD (HPL)</b> STEELCASE	1	212.67	212.67
<b>22</b> <b>7374/2FO/FR - BRIGHTON 30 DEGREE CURVED 3-STEP UNIT</b> STEP 1 HT: 14" STEP 2 HT: 24" STEP 3 HT: 30" OVERALL WIDTH: 62" D-BACK: ARCCOM SPECTRUM MOONSTONE #26 AC-69715 FABRIC DIRECTION: RAILROAD OR OFF THE BOLT TBD A-STEPS: ARCCOM STREAMLINE CARIBBEAN #5 AC-62074 FABRIC DIRECTION: RAILROAD OR OFF THE BOLT TBD C-SIDES: ARCCOM SPECTRUM MOONSTONE #26 AC-69715 FABRIC DIRECTION: RAILROAD OR OFF THE BOLT TBD ERG INTERN <b>Tag For</b> LOUNGE AREA 1 S-6A	1	3,251.64	3,251.64
<b>23</b> <b>7395/2FO/FR - BRIGHTON 36"W 3-STEP UNIT</b> STEP 1 HT: 14" STEP 2 HT: 24" STEP 3 HT: 30" OVERALL WIDTH: 36" D-BACK: ARCCOM SPECTRUM MOONSTONE #26 AC-69715 FABRIC DIRECTION: RAILROAD OR OFF THE BOLT TBD A-STEPS: ARCCOM STREAMLINE CARIBBEAN #5 AC-62074 FABRIC DIRECTION: RAILROAD OR OFF THE BOLT TBD C-SIDES: ARCCOM SPECTRUM MOONSTONE #26 AC-69715 FABRIC DIRECTION: RAILROAD OR OFF THE BOLT TBD ERG INTERN <b>Tag For</b> LOUNGE AREA 1 S-6B	4	2,176.09	8,704.36
<b>24</b> <b>8308/2FO/FR - RAVEN 30 DEGREE INSIDE CURVE MODULAR UNIT</b> SEAT HT: 18" BACK HT: 33" LEGS: BRUSHED ALUMINUM BACK: CF STINSON EFFERVESCENCE 2.0 NEW WAVE EFF10 FABRIC DIRECTION: RAILROAD OR OFF THE BOLT TBD SEAT: CF STINSON CORE 2.0 GRAY CRE214 FABRIC DIRECTION: RAILROAD OR OFF THE BOLT TBD ERG INTERN	7	1,355.83	9,490.81

TITLE OF PRODUCT TRANSFERS UPON RECEIPT BY CUSTOMER.

ACCEPTED BY \_\_\_\_\_ TITLE \_\_\_\_\_ DATE \_\_\_\_\_

Description	Quantity	Unit Price	Extended Price
24 <b>Tag For</b> LOUNGE AREA 1 S-7			
25 <b>8314/2FO/FR - RAVEN 30 DEGREE OUTSIDE CURVE MODULAR UNIT</b> SEAT HT: 18" BACK HT: 33" LEGS: BRUSHED ALUMINUM BACK: CF STINSON EFFERVESCENCE 2.0 NEW WAVE EFF10 FABRIC DIRECTION: RAILROAD OR OFF THE BOLT TBD SEAT: CF STINSON CORE 2.0 GRAY CRE214 FABRIC DIRECTION: RAILROAD OR OFF THE BOLT TBD ERG INTERN <b>Tag For</b> LOUNGE AREA 1 S-8	1	1,263.71	1,263.71
26 <b>8334/FR - RAVEN 30 DEGREE BACKLESS CURVE MODULAR UNIT</b> SEAT HT: 18" SEAT DEPTH: 27" LEGS: BRUSHED ALUMINUM SEAT/SIDES: CF STINSON AVANT DARK PURPLE AV149 FABRIC DIRECTION: RAILROAD OR OFF THE BOLT TBD ERG INTERN <b>Tag For</b> LOUNGE AREA 1 S-9	3	1,152.48	3,457.44
27 <b>NST-C2048L-72-G7 - NEST CLOSED BACK UNIT</b> 48" X 20" X 72" HPL PANELS: GREYED OAK 5791-PG SEAT: GRADE 5 - MOMENTUM PATTERN: TRIBECA COLOR: JAM SIDES: GRADE 7 - CF STINSON PATTERN: ORIGAMI COLOR: PINWHEEL +/TO BE MODIFIED TO BE 48"W MEDIA TECH <b>Tag For</b> LOUNGE AREA 1 S-11	3	3,856.95	11,570.85
<b>Sub Total</b>			72,117.70
<b>Total</b>			72,117.70

SMALL GROUP F143

28 <b>BXBYARMLESS - AMQ Bixby Chair Armless</b> Cushion: No Cushion Frame Finish: Paint PC03 - Platinum Seat Shell Finish: Plastic PL02 - Sterling Dark Back Shell Finish: Plastic PL03 - Platinum	6	166.52	999.12
--	---	--------	--------

TITLE OF PRODUCT TRANSFERS UPON RECEIPT BY CUSTOMER.

yourNBS.com

Remit Payments to: NBS, 6973 Reliable Parkway, Chicago, IL 60686

Description	Quantity	Unit Price	Extended Price
<b>28 Castors or Glides:</b> Soft Castors <b>Accessories:</b> No Accessory <b>Storage Tray:</b> No Storage Tray AMQ SOLUTI <b>Tag For</b> SMALL GROUP F143 S-2			
<b>29 SMENTNL2460 -</b> Elemental; Table-Nest and fold, With casters, 24D x 60W Worksurface Finish: Smith System Laminate 494360 - CLASSIC LINEN HIGH GLOSS LAMINATE Edge Type: 1 1/4in Top w 3/8in Bmp TMld Edge Finish: Smith System T-Mold CHP - CHAMPAGNE T MOLD Leg Finish: Smith System Paint PLT - Platinum Height: EJ - Adjustable Height SMITH SYST <b>Tag For</b> SMALL GROUP F143 T-1	3	667.20	2,001.60
<b>Sub Total</b>			3,000.72
<b>Total</b>			3,000.72
<b>SMALL GROUP F144</b>			
<b>30 BXBYARMLESS -</b> AMQ Bixby Chair Armless <b>Cushion:</b> No Cushion <b>Frame Finish:</b> Paint PC03 - Platinum <b>Seat Shell Finish:</b> Plastic PL02 - Sterling Dark <b>Back Shell Finish:</b> Plastic PL03 - Platinum <b>Castors or Glides:</b> Soft Castors <b>Accessories:</b> No Accessory <b>Storage Tray:</b> No Storage Tray AMQ SOLUTI <b>Tag For</b> SMALL GROUP F144 S-2	6	166.52	999.12
<b>31 SMENTNL2460 -</b> Elemental; Table-Nest and fold, With casters, 24D x 60W Worksurface Finish: Smith System Laminate 494360 - CLASSIC LINEN HIGH GLOSS LAMINATE Edge Type: 1 1/4in Top w 3/8in Bmp TMld Edge Finish: Smith System T-Mold CHP - CHAMPAGNE T MOLD Leg Finish: Smith System Paint PLT - Platinum Height: EJ - Adjustable Height SMITH SYST <b>Tag For</b> SMALL GROUP F144 T-1	3	667.20	2,001.60

TITLE OF PRODUCT TRANSFERS UPON RECEIPT BY CUSTOMER.

ACCEPTED BY \_\_\_\_\_ TITLE \_\_\_\_\_ DATE \_\_\_\_\_

yourNBS.com

Remit Payments to: NBS, 6973 Reliable Parkway, Chicago, IL 60686

Description	Quantity	Unit Price	Extended Price
<b>Sub Total</b>			3,000.72
<b>Total</b>			<b>3,000.72</b>
<b>CIRC DESK</b>			
<b>32 ND-75DL-MOB - Nomad Desk WITH Transaction Top (LEFT)</b> 24"D X 75"W, 29"H Worksurface,With grommet 35"H Transaction Ledge HPL Worksurface D: Custom Color: Nevamar White Fiesta MW550-SD HPL Panel B & C: Premium Color: Grayed Oak 5791-PG PVC Edge: Silver Grey C600244 Accent Panel A: Wilsonart Eggplant4913-60 Powdercoat: 809 Silver MEDIA TECH <b>Tag For</b> CIRC DESK CD-1	1	3,823.20	3,823.20
<b>33 MCD-1817 - Steel Pencil Drawer</b> 18"W x 17"D X 2"H Finish: Black MEDIA TECH <b>Tag For</b> CIRCULATION DESK CD-1B	1	192.60	192.60
<b>34 ND-40BR-MOB - Nomad Mobile Book Return</b> 34"W x 29"H HPL Worksurface: WA Classic Linen 4943-38 HPL Panel B,C: Premium Color: Formica Grayed Oak 5791-PG PVC Edge: Silver Grey C600244 Powdercoat: 809 Silver MEDIA TECH <b>Tag For</b> CIRC DESK CD-2	1	1,759.05	1,759.05
<b>35 MDS-DBTL-1824-24 - Nomad Depressible Book Truck</b> 32/39" H HPL Panel: Premium Color: Formica Grayed Oak 5791-PG PVC Edge: Silver Grey C600244 Powdercoat: 809 Silver MEDIA TECH <b>Tag For</b> CIRC DESK BKTK-2	1	1,327.50	1,327.50
<b>36 WMPS661220-W-LL-P2A - Nomad Mobile Pedestal 2 Box</b> 15"W x 20"H HPL Premium	1	509.85	509.85

TITLE OF PRODUCT TRANSFERS UPON RECEIPT BY CUSTOMER.

ACCEPTED BY \_\_\_\_\_ TITLE \_\_\_\_\_ DATE \_\_\_\_\_

Description	Quantity	Unit Price	Extended Price
<b>36</b> Color: Formica Grayed Oak 5791-PG PVC Edge: Silver Grey C600244 Pull Type: P2 Arch Pull Pull Finish: Nickel Lock Type: Lock Alike MEDIA TECH <b>Tag For</b> CIRC DESK CD-3			
<b>Sub Total</b>			7,612.20
<b>Total</b>			7,612.20
WALK-UP COMPUTER STATION WALK-UP COUNTER			
<b>37</b> <b>WUW2081-SP-ADA</b> - Walk-up Wall Hung ADA Computer Workstation 81"W x 20"D x 13"+H  Consisting of: Center storage module at 27"W x 13"H+ with 2-locking doors, flanked by a 27"W surface extending off the bottom right side of cabinet & another at the top left side. Full height (13"+) panel at the right end for ADA compliance. 2-Wire management grommets in the surface to coordinate with a series of wire management access holes/channels across the back of the station to conceal all wires. Wall hung using a hidden mount on the back of the cabinet along with hidden cleats behind the left and right surface extensions. Workstation has a 7/8" border on all sides with a recessed reveal detail.  Inset Reveal & Doors: Wilsonart Magnolia 5012-60 Exterior Shell: Wilsonart Concord Grape 13098-60 Edge: White Pulls: Rod Style - Brushed Nickel Finishes as noted or equal, based on location PRIMEWAY <b>Tag For</b> WALK-UP COMP STATION WALK-UP	1	3,682.67	3,682.67
<b>Sub Total</b>			3,682.67
<b>Total</b>			3,682.67
<b>38</b> <b>UPCHARGE</b> - UPCHARGE FOR PREMIUM LAMINATE FORMICA GREYED OAK 5791-PG MEDIA TECH	1	538.99	538.99
<b>40</b> <b>LOT</b> - LAMINATE UPCHARGE 494360 - CLASSIC LINEN HIGH GLOSS SMITH SYST	1	375.00	375.00

TITLE OF PRODUCT TRANSFERS UPON RECEIPT BY CUSTOMER.

ACCEPTED BY \_\_\_\_\_ TITLE \_\_\_\_\_ DATE \_\_\_\_\_



yourNBS.com

Remit Payments to: NBS, 6973 Reliable Parkway, Chicago, IL 60686

Description	Quantity	Unit Price	Extended Price
<b>41 LOT - PROJECT MANAGEMENT FEES</b> 32 HOURS X \$85 NBS TROY	1	2,720.00	2,720.00
<b>42 LOT - NON UNION STRAIGHT TIME LABOR TO RECEIVE AND DELIVER NEW PRODUCT TO THE JOB SITE</b>  ALL WORK TO BE DONE AT ONE TIME ROSE MOVIN	1	1,788.00	1,788.00
<b>43 LOT - NON UNION STRAIGHT TIME LABOR TO INSTALL NEW PRODUCT PER PRINT</b>  ALL WORK TO BE DONE AT ONE TIME  PRICING DOES NOT INCLUDE THE REMOVAL OF EXISTING PRODUCT  CLEAR AND READY SPACE INCLUDES DEBRIS REMOAVL ROSE MOVIN	1	6,940.00	6,940.00
<b>44 LOT - NON UNION LABOR OVERTIME DIFFERENTIAL</b>  WILL BE INVOICED IF REQUIRED ROSE MOVIN	1	2,496.00	2,496.00
<b>45 MONTHLY - MONTHLY STORAGE FEES TO HOLD FURNITURE AT WAREHOUSE.</b>  WILL BE INVOICED MONTHLY FOR THE MONTHS USED - NOT TO EXCEED FIGURE ROSE MOVIN	4	780.00	3,120.00

**Quotation Totals**

<b>Sub Total</b>	135,808.87
MEDIA TECH FREIGHT	1,375.00
SMITH SYST FREIGHT	2,231.00
STEELCASE COM FABRIC LINE 5	886.00
STEELCASE COM FABRIC LINE 19	430.00
STEELCASE COM FABRIC LINE 19	3,491.00
<b>Grand Total</b>	<b>144,221.87</b>

End of Quotation

TITLE OF PRODUCT TRANSFERS UPON RECEIPT BY CUSTOMER.

ACCEPTED BY \_\_\_\_\_ TITLE \_\_\_\_\_ DATE \_\_\_\_\_



2595 Bellingham • Troy, MI 48083 • 248.823.5400 • 248.823.5401 Fax  
 2211 Old Earhart Rd. Ste.190 • Ann Arbor, MI 48105 • 248.823.5400 • 248.823.5401 Fax  
 3201 Pine Tree Rd. Ste. A • Lansing, MI 48911 • 517.886.0072 • 248.823.5401 Fax  
 5160 Alliance Dr. • Bay City, MI 48706 • 989.895.8574 • 989.895.8545 Fax  
 4 North St. Clair St. • Toledo, OH 43604 • 419.662.2040 • 248.823.5401 Fax

**Quotation 357812**

**Quote Date** 01/27/23

**Customer Order**

**Project** 221130

**Customer** L00002

**Terms** NET 10 DAYS

**Expiration Date**

**Account Representative** MONIQUE DUGAN

[yourNBS.com](http://yourNBS.com)

**Remit Payments to:** NBS, 6973 Reliable Parkway, Chicago, IL 60686

**Quote To**

Livonia Public Schools  
 15125 FARMINGTON RD  
 LIVONIA, MI, 48154-5413

**Ship To**

PHILLIP FRANCIS  
 Cleveland Elementary School  
 28030 CATHEDRAL ST  
 MEDIA CENTER  
 LIVONIA, MI, 48150-4107

**Phone** +1 (313) 523-9156

**Phone** +1 (734) 744-2554

[pfrancis@livoniapublicschools.org](mailto:pfrancis@livoniapublicschools.org)

**Sales Location** Troy

**PO REQUIRED TO PLACE ORDER**

**E&I, OMNIA, TIPS & NCPA CONTRACTS HAVE BEEN APPLIED TO THIS QUOTE**

**PRICING IS VALID FOR 30 DAYS**

**LEAD TIME: 14-16 WEEKS FROM RECEIPT OF PO**

**STRAIGHT TIME NON UNION LABOR HAS BEEN QUOTED**

**ALL PRODUCT TO INSTALL AT THE SAME TIME**

**PRICING DOES NOT INCLUDE THE REMOVAL OR MOVING OF EXISTING PRODUCT**

**IF REQUIRED STORAGE FEES AND OVERTIME DIFFERENTIAL FEES WILL BE INVOICED AS NEEDED**

**30 DAYS OF FREE STORAGE HAS BEEN INCLUDED IN OUR PRICING**

Description	Quantity	Unit Price	Extended Price
<b>BOOK STACKS E127</b>			
<b>1 TS31402CM - Jenny; Chair, 2 arms, Multiple fabric, Casters</b> <b>ARMS: 5999 MISC FABRIC</b> DESIGNTEX INC Purchaser: VENDOR Pattern: BEGUILLED BY THE WILD -3043 Color: SILVER DORY -802 Direction: VERTICAL <b>INR BACK: 59DF GRADED IN PR. GRP. 6</b> DESIGNTEX INC Purchaser: VENDOR Pattern: BEGUILLED BY THE WILD -3043 Color: SILVER DORY -802 <small>TITLE OF PRODUCT TRANSFERS UPON RECEIPT BY CUSTOMER.</small>	1	1,059.38	1,059.38

ACCEPTED BY \_\_\_\_\_ TITLE \_\_\_\_\_ DATE \_\_\_\_\_

Description	Quantity	Unit Price	Extended Price
<p>1      Direction: VERTICAL  <b>OUT BACK: 59DF GRADED IN PR. GRP. 6</b>            DESIGNTEX INC            Purchaser: VENDOR            Pattern: BEGUILLED BY THE WILD -3043            Color: SILVER DORY -802            Direction: VERTICAL  <b>SEAT: 59DD GRADED IN PR. GRP. 4</b>            DESIGNTEX INC            Purchaser: VENDOR            Pattern: ALPHABET -3877            Color: IRON -802            Direction: HORIZONTAL            STEELCASE  <b>Tag For</b>      BOOK STACKS E127                             S-1</p>			
<p>2      <b>FK007-CONVOCART-Z-SE</b> - Convo Lily Set (10 Convo Lily pads and cart)  <b>Select Fabric Seat Finish:</b>  <b>GR2:</b> Grade-2  <b>DOD:</b> Doodle  <b>GR1:</b> Grade-1  <b>STX-8838:</b> Imperial  <b>GR1:</b> Grade-1  <b>STX-8823:</b> Carbon  <b>GR1:</b> Grade-1  <b>STX-8802:</b> Lagoon  <b>GR1:</b> Grade-1  <b>STX-8833:</b> Crème De Menthe  <b>GR1:</b> Grade-1  <b>STX-8842:</b> Limoncello            FOMCORE  <b>Tag For</b>      BOOK STACKS E127                             S-5</p>	3	4,228.00	12,684.00
<p>3      <b>DISP-4724</b> - Media Technologies Display End Panel, 3 opening, 24"Wx3-1/2"Dx47-1/2"H            **to mount on H11-4824 Double Sided Bookcases. HPL/3mm PVC construction            HPL: Formica Greyed Oak 5791-PG            Interior Back Panel: Wilsonart Brittany Blue D321-60            PVC: Silver Grey C600244            MEDIA TECH</p>	7	706.05	4,942.35

TITLE OF PRODUCT TRANSFERS UPON RECEIPT BY CUSTOMER.

ACCEPTED BY \_\_\_\_\_ TITLE \_\_\_\_\_ DATE \_\_\_\_\_

yourNBS.com

Remit Payments to: NBS, 6973 Reliable Parkway, Chicago, IL 60686

Description	Quantity	Unit Price	Extended Price
<b>3 Tag For</b> BOOK STACKS DISPLAY			
<b>Sub Total</b>			18,685.73
<b>Total</b>			<b>18,685.73</b>
<b>CIRC DESK</b>			
<b>4 SMLBR21004 - Booktruck, Six Sloping Shelf with Six Book Supports,</b> 18"D x 36"W x 43"H <b>Cart Finish:</b> Smith System Paint PLT - PLATINUM <b>Divider Finish:</b> Smith System Plastic BLACK - BLACK SMITH SYST <b>Tag For</b> CIRC DESK BKTK-1	3	447.60	1,342.80
<b>5 ND-75DX-MOB - Nomad Desk WITHOUT transaction top</b> 24"D X 75"W, 29"H Worksurface, With grommet HPL Worksurface D: Custom Color: Nevamar White Fiesta MW550-SD HPL Panel B & C: Premium Color: Formica Grayed Oak 5791-PG PVC Edge: Silver Grey C600244 Accent Panel A: Wilsonart Brittany Blue D321-60 Powdercoat: 809 Silver MEDIA TECH <b>Tag For</b> CIRC DESK CD-1	1	3,636.45	3,636.45
<b>6 MCD-1817 - Steel Pencil Drawer</b> 18"W x 17"D X 2"H Finish: Black MEDIA TECH <b>Tag For</b> CIRCULATION DESK CD-1B	1	192.60	192.60
<b>7 ND-40BR-MOB - Nomad Mobile Book Return</b> 34"W x 29"H HPL Worksurface: Gen Laminate Color: WA Classic Linen 4943-38 HPL Panel B,C: Premium Color: Formica Grayed Oak 5791-PG PVC Edge: Silver Grey C600244 Powdercoat: 809 Silver MEDIA TECH <b>Tag For</b> CIRC DESK CD-2	1	1,759.05	1,759.05
<b>8 MDS-DBTL-1824-24 - Nomad Depressible Book Truck</b> 32/39" H	3	1,327.50	3,982.50

TITLE OF PRODUCT TRANSFERS UPON RECEIPT BY CUSTOMER.

ACCEPTED BY \_\_\_\_\_ TITLE \_\_\_\_\_ DATE \_\_\_\_\_

Description	Quantity	Unit Price	Extended Price
<b>8</b> HPL Panel: Premium Color: Formica Grayed Oak 5791-PG PVC Edge: Silver Grey C600244 Powdercoat: 809 Silver MEDIA TECH <b>Tag For</b> CIRC DESK BKTK-2			
<b>9</b> <b>WMPS661220-W-LL-P2A</b> - Nomad Mobile Pedestal 2 Box 15"W x 20"H HPL Premium Color: Formica Grayed Oak 5791-PG PVC Edge: Silver Grey C600244 Pull Type: P2 Arch Pull Pull Finish: Nickel Lock Type: Lock Alike MEDIA TECH <b>Tag For</b> CIRC DESK CD-3	1	509.85	509.85

**Sub Total** 11,423.25

**Total** 11,423.25

**WALK-UP COMPUTER STATION**

<b>10</b> <b>WUW2081-SP-ADA</b> - Walk-up Wall Hung ADA Computer Workstation 81"W x 20"D x 13+"H	1	3,682.67	3,682.67
--	---	----------	----------

Consisting of:  
 Center storage module at 27"W x 13"H+ with 2-locking doors,  
 flanked by a 27"W surface extending off the bottom  
 right side of cabinet & another at the top left side. Full height (13"+)  
 panel at the right end for ADA compliance.  
 2-Wire management grommets in the surface to coordinate with a  
 series of wire management access holes/channels across the back  
 of the station to conceal all wires.  
 Wall hung using a hidden mount on the back of the cabinet along  
 with hidden cleats behind the left and right surface extensions.  
 Workstation has a 7/8" border on  
 all sides with a recessed reveal detail.

Inset Reveal & Doors: Wilsonart Magnolia 5012-60  
 Exterior Shell: Wilsonart Island 0498K-18  
 Edge: White  
 Pulls: Rod Style - Brushed Nickel  
 Finishes as noted or equal, based on location  
 PRIMEWAY

**Tag For** WALK-UP COMP STATION  
 WALK-UP

TITLE OF PRODUCT TRANSFERS UPON RECEIPT BY CUSTOMER.

ACCEPTED BY \_\_\_\_\_ TITLE \_\_\_\_\_ DATE \_\_\_\_\_

Description	Quantity	Unit Price	Extended Price
<b>Sub Total</b>			3,682.67
<b>Total</b>			<b>3,682.67</b>
<b>FLEX SPACE E105</b>			
<b>11</b> <b>SMEMTNL2460</b> - Elemental; Table-Nest and fold, With casters, 24D x 60W Worksurface Finish: Smith System Laminate 494360 - CLASSIC LINEN HIGH GLOSS Edge Type: 1 1/4in Top w 3/8in Bmp TMld Edge Finish: Smith System T-Mold CHP - CHAMPAGNE T MOLD Leg Finish: Smith System Paint PLT - Platinum Height: EJ - Adjustable Height SMITH SYST <b>Tag For</b> FLEX SPACE E105 T-1	20	667.20	13,344.00
<b>12</b> <b>BXBYARMLESS</b> - AMQ Bixby Chair Armless <b>Cushion:</b> No Cushion <b>Frame Finish:</b> Paint PC03 - Platinum <b>Seat Shell Finish:</b> Plastic PL02 - Sterling Dark <b>Back Shell Finish:</b> Plastic PL03 - Platinum <b>Castors or Glides:</b> Soft Castors <b>Accessories:</b> No Accessory <b>Storage Tray:</b> No Storage Tray AMQ SOLUTI <b>Tag For</b> FLEX SPACE E105 S-2	40	166.52	6,660.80
<b>Sub Total</b>			20,004.80
<b>Total</b>			<b>20,004.80</b>
<b>IDEA FACTORY E129</b>			
<b>13</b> <b>SMEMTEL60TR</b> - Elemental; Table-Trapezoid, 30D x 60W Worksurface Finish: Smith System Laminate 494360 - CLASSIC LINEN HIGH GLOSS Edge Type: D-1 1/4in Top w 4mm TMld Edge Finish: Smith System T-Mold ORG - ORANGE T MOLD Leg Finish: Smith System Paint PLT - Platinum Height: EA - Adjustable Height SMITH SYST <b>Tag For</b> IDEA FACTORY E129 T-2	6	337.80	2,026.80
<b>14</b> <b>SMINC17577</b> - Interchange; 3 inch dual wheel casters-Pack of 4, Locking, Colorful	6	76.80	460.80

TITLE OF PRODUCT TRANSFERS UPON RECEIPT BY CUSTOMER.

ACCEPTED BY \_\_\_\_\_ TITLE \_\_\_\_\_ DATE \_\_\_\_\_

Description	Quantity	Unit Price	Extended Price
<b>14 Caster Finish:</b> Smith System Plastic PLATINUM - Platinum SMITH SYST <b>Tag For</b> IDEA FACTORY E129 T-2/CSTR			
<b>15 SMPLN25212BUTCHER</b> - Planner; Studio-Butcher table, Fixed height, With casters, 36D x 72W x 29H <b>Leg Finish:</b> SMITH SYSTEM PAINT OR - ORANGE SMITH SYST <b>Tag For</b> IDEA FACTORY E129 T-3	2	1,371.00	2,742.00
<b>16 SMCSC310015000</b> - Cascade Mega-Case-Open, 15-3" SW totes, casters <b>Edge Panel Configuration:</b> P- Pltnm Body w/Solid End Pnl <b>End Panel Finish:</b> Smith System Paint CHL - CHARCOAL SMITH SYST <b>Tag For</b> IDEA FACTORY E129 CAB-1	3	945.00	2,835.00
<b>17 SMPLN25271BUTCHER</b> - Planner; Studio-Single bench, Butcher block, For 72W table, 12D x 58W <b>Leg Finish:</b> SMITH SYSTEM PAINT OR - ORANGE SMITH SYST <b>Tag For</b> IDEA FACTORY E129 S-4	4	729.60	2,918.40
<b>18 SMOODLE31</b> - Oodle; Stool-Stack of 3, With 1 movement disc <b>Oodle Finish:</b> Smith System Plastic CHARCOAL - Charcoal SMITH SYST <b>Tag For</b> IDEA FACTORY E129 S-6B	6	157.20	943.20
<b>19 SMOODLE31</b> - Oodle; Stool-Stack of 3, With 1 movement disc <b>Oodle Finish:</b> Smith System Plastic PLATINUM - Platinum SMITH SYST <b>Tag For</b> IDEA FACTORY E129 S-6C	6	157.20	943.20
<b>20 SMOODLE31</b> - Oodle; Stool-Stack of 3, With 1 movement disc <b>Oodle Finish:</b> Smith System Plastic ORANGE - Orange SMITH SYST <b>Tag For</b> IDEA FACTORY E129 S-6A	6	157.20	943.20
<b>Sub Total</b>			13,812.60
<b>Total</b>			<b>13,812.60</b>

TITLE OF PRODUCT TRANSFERS UPON RECEIPT BY CUSTOMER.

ACCEPTED BY \_\_\_\_\_ TITLE \_\_\_\_\_ DATE \_\_\_\_\_

yourNBS.com

Remit Payments to: NBS, 6973 Reliable Parkway, Chicago, IL 60686

Description	Quantity	Unit Price	Extended Price
<b>LOUNGE AREA</b>			
<b>21 N66RD42CL - WHIMSY,42DIA ROUND,MOBILE,LAMINATE TOP</b> <b>LAMINATE:</b> <b>G1009: WHITE NEBBIA</b> <b>UPHOLSTERY GRADE:</b> <b>MOMD: MOMENTUM GRADE D</b> <b>09165968: NIFTY ADOBE</b> KIMBALL OF <b>Tag For</b> LOUNGE AREA OTT-1	1	960.24	960.24
<b>22 N66RD22C - WHIMSY,22DIA ROUND,MOBILE</b> <b>UPHOLSTERY GRADE:</b> <b>DTC: DESIGNTEX GRADE C</b> <b>3877_401: ALPHABET MEDITERRANEAN</b> <b>LEATHER PULL:</b> <b>EB: EBONY LEATHER</b> KIMBALL OF <b>Tag For</b> LOUNGE AREA OTT-5	1	527.62	527.62
<b>23 N66RD16C - WHIMSY,16DIA ROUND,MOBILE</b> <b>UPHOLSTERY GRADE:</b> <b>DTC: DESIGNTEX GRADE C</b> <b>3877_401: ALPHABET MEDITERRANEAN</b> <b>LEATHER PULL:</b> <b>EB: EBONY LEATHER</b> KIMBALL OF <b>Tag For</b> BOOK STACKS E127 OTT-2	2	453.56	907.12
<b>24 N66RD16C - WHIMSY,16DIA ROUND,MOBILE</b> <b>UPHOLSTERY GRADE:</b> <b>DTC: DESIGNTEX GRADE C</b> <b>3877_202: ALPHABET LIMONCELLO</b> <b>LEATHER PULL:</b> <b>EB: EBONY LEATHER</b> KIMBALL OF <b>Tag For</b> BOOK STACKS E127 OTT-3	3	453.56	1,360.68

TITLE OF PRODUCT TRANSFERS UPON RECEIPT BY CUSTOMER.

ACCEPTED BY \_\_\_\_\_ TITLE \_\_\_\_\_ DATE \_\_\_\_\_



Description	Quantity	Unit Price	Extended Price
<b>25 N66RD16C - WHIMSY,16DIA ROUND,MOBILE</b> <b>UPHOLSTERY GRADE:</b> DTC: DESIGNTEX GRADE C 3877_703: ALPHABET HABANERO <b>LEATHER PULL:</b> EB: EBONY LEATHER KIMBALL OF Tag For BOOK STACKS E127 OTT-4	4	453.56	1,814.24
<b>26 8334/GD1 - RAVEN MODULAR CURVED BACKLESS UNIT</b> SEAT DEPTH: 27" SEAT HEIGHT: 18" LEGS POWDERCOAT: BRUSHED ALUMINUM SEAT: CF STINSON PING PONG MAI TAI PNG10 FABRIC DIRECTION: RAILROAD OR OFF THE BOLT - TBD +/NON GAGING UNIT ERG INTERN Tag For LOUNGE AREA S-3	6	1,408.75	8,452.50
<b>27 TS34403 - Alight; Ottoman-Bench</b> <b>UPHLSTRY: 59DF GRADED IN PR. GRP. 6</b> MOMENTUM TEXTILES Purchaser: VENDOR Pattern: NIFTY Color: ADOBE -09165968 Direction: HORIZONTAL <b>LEG OPT: *OPT:LEG OPTIONS</b> <b>ALUMINUM: STD:ALUMINUM LEGS</b> STEELCASE Tag For LOUNGE AREA S-7	2	510.60	1,021.20
<b>28 TS34403 - Alight; Ottoman-Bench</b> <b>UPHLSTRY: 59DD GRADED IN PR. GRP. 4</b> DESIGNTEX INC Purchaser: VENDOR Pattern: ALPHABET -3877 Color: MEDITERRANEAN -401 Direction: HORIZONTAL STEELCASE Tag For LOUNGE AREA S-7B	1	488.06	488.06
<b>29 TS34403 - Alight; Ottoman-Bench</b> <b>UPHLSTRY: 59DD GRADED IN PR. GRP. 4</b>	1	488.06	488.06

TITLE OF PRODUCT TRANSFERS UPON RECEIPT BY CUSTOMER.

Description	Quantity	Unit Price	Extended Price
<b>29</b> DESIGNTEX INC Purchaser: VENDOR Pattern: ALPHABET -3877 Color: LIMONCELLO -202 Direction: HORIZONTAL STEELCASE <b>Tag For</b> LOUNGE AREA S-7C			
<b>Sub Total</b>			16,019.72
<b>Total</b>			<b>16,019.72</b>
<b>MEDIA TECH MILLWORK</b>			
<b>30</b> <b>TRN-SB-841813-L</b> - TRANSITION 84X18X13 STARTER UNIT FLOOR TO TOP OF UNIT HEIGHT 78"H X 20"W X 13"D INCLUDES 3-FIXED AND 4-TAB CAM ADJUSTABLE SHELVES HPL End Panels, Top, Bottom: WA Sunnyside Up 13089-60 PVC End Panels, Top, Bottom: Sunny Side Up C200812 HPL Adj Shelves: WA Magnolia 5012-60  PVC Adj Shelves: Generic White C100033 MEDIA TECH	1	497.25	497.25
<b>31</b> <b>TRN-SB-841813A-L</b> - TRANSITION 84X18X13 ADDER UNIT FLOOR TO TOP OF UNIT HEIGHT 78"H X 19"W X 13"D INCLUDES 3-FIXED AND 4-TAB CAM ADJUSTABLE SHELVES HPL End Panels, Top, Bottom: WA Sunnyside Up 13089-60 PVC End Panels, Top, Bottom: Sunny Side Up C200812 HPL Adj Shelves: WA Magnolia 5012-60 PVC Adj Shelves: Generic White C100033 MEDIA TECH	1	389.70	389.70
<b>32</b> <b>WCS-481430-LL-HPA</b> - ELEMENTS CUPBOARD STORAGE WALL UNIT 48"W X 14"D X 30"H WITH 2-ADJUSTABLE SHELVES, 2-DOORS WITH HINGE HPL: WA Dragon Fire 13088-60 PVC: Dragon Fire C300346 Hinge: H3  HINGE: H3 RIGHT OR LEFT FACING PULL: TBD LOCK: KEY ALIKE MEDIA TECH <b>Tag For</b> MEDIA TECH MILLWORK WCS-481430	1	745.65	745.65
<b>33</b> <b>BOF-482434-L-CT</b> - OPEN FOLIO UNIT WITH CONTINUOUS TOP 48"W X 24"D X 34"H 22-FIXED SHELVES HPL Case: WA Sunnyside Up 13089-60 PVC Case: Sunny Side Up C200812 HPL Folio Shelves: WA Magnolia 5012-60	1	759.60	759.60

TITLE OF PRODUCT TRANSFERS UPON RECEIPT BY CUSTOMER.

ACCEPTED BY \_\_\_\_\_ TITLE \_\_\_\_\_ DATE \_\_\_\_\_

Description	Quantity	Unit Price	Extended Price
<b>33</b> MEDIA TECH <b>Tag For</b> MEDIA TECH MILLWORK BOF-482434			
<b>34</b> <b>ECTBL-C-24138</b> - CONTINUOUS TOP ECT WITH 4" BACK SPLASH 138"W X 24"D X 1.25"H HPL: WA Mushroom 5013-60 PVC: TBD MEDIA TECH <b>Tag For</b> MEDIA TECH MILLWORK BCSLD-242434	1	440.10	440.10
<b>35</b> <b>WCSA48-C-T</b> - 48" WIDE VST ASSEMBLY WITH 2-SUPPORT ARMS MODIFIED FOR USE WITH 34"H OVERALL WORKSURFACE TFL: Canadian Gray  PVC: Silver Gray C600244  Powder Coat: 809 Silver MEDIA TECH <b>Tag For</b> MEDIA TECH MILLWORK WS-C-2430	1	277.65	277.65
<b>36</b> <b>HT-96</b> - HORIZONTAL MOUNTING TRACK 96" WITH PRE-PUNCHED MOUNT HOULES ON 16" CENTERS. INCLUDES CONCEALMENT MATERIAL. FINISH: ANODIZED ALUMINUM WALL TYPE: CMU/GYPSUM MEDIA TECH <b>Tag For</b> MEDIA TECH MILLWORK HT-96	5	78.75	393.75
<b>37</b> <b>HTAEC</b> - HORIZONTAL MOUNTING TRACK END CAP WITH MOUNTING SCREWS FINISH: BLACK MEDIA TECH <b>Tag For</b> MEDIA TECH MILLWORK HTAEC	4	7.20	28.80
<b>38</b> <b>HTACS</b> - HORIZONTAL MOUNTING TRACK CONNECTOR SPLICE PLATE FINISH: ALUMINUM MEDIA TECH <b>Tag For</b> MEDIA TECH MILLWORK HTAEC	4	3.15	12.60
<b>39</b> <b>UPCHARGE</b> - UPCHARGE FOR PREMIUM LAMINATE FORMICA GREYED OAK 5791-PG MEDIA TECH	1	247.36	247.36

TITLE OF PRODUCT TRANSFERS UPON RECEIPT BY CUSTOMER.

ACCEPTED BY \_\_\_\_\_ TITLE \_\_\_\_\_ DATE \_\_\_\_\_



2595 Bellingham • Troy, MI 48083 • 248.823.5400 • 248.823.5401 Fax  
 2211 Old Earhart Rd. Ste.190 • Ann Arbor, MI 48105 • 248.823.5400 • 248.823.5401 Fax  
 3201 Pine Tree Rd. Ste. A • Lansing, MI 48911 • 517.886.0072 • 248.823.5401 Fax  
 5160 Alliance Dr. • Bay City, MI 48706 • 989.895.8574 • 989.895.8545 Fax  
 4 North St. Clair St. • Toledo, OH 43604 • 419.662.2040 • 248.823.5401 Fax

**Quotation 357812**  
 Page 11 / 12 (cont'd)

yourNBS.com

Remit Payments to: NBS, 6973 Reliable Parkway, Chicago, IL 60686

Description	Quantity	Unit Price	Extended Price
<b>Sub Total</b>			3,792.46
<b>Total</b>			<b>3,792.46</b>
41 LOT - LAMINATE UPCHARGE 494360 - CLASSIC LINEN HIGH GLOSS SMITH SYST	1	419.38	419.38
42 LOT - PROJECT MANAGEMENT FEES 32 HOURS X \$85 NBS TROY	1	2,720.00	2,720.00
43 LOT - NON UNION STRAIGHT TIME LABOR TO RECEIVE AND DELIVER NEW PRODUCT TO THE JOB SITE  ALL WORK TO BE DONE AT ONE TIME ROSE MOVIN	1	1,873.00	1,873.00
44 LOT - NON UNION STRAIGHT TIME LABOR TO INSTALL NEW PRODUCT PER PRINT  ALL WORK TO BE DONE AT ONE TIME  PRICING DOES NOT INCLUDE THE REMOVAL OF EXISTING PRODUCT  CLEAR AND READY SPACE INCLUDES DEBRIS REMOAVL ROSE MOVIN	1	7,218.00	7,218.00
45 LOT - NON UNION LABOR OVERTIME DIFFERENTIAL  WILL BE INVOICED IF REQUIRED ROSE MOVIN	1	2,704.00	2,704.00
46 MONTHLY - MONTHLY STORAGE FEES TO HOLD FURNITURE AT WAREHOUSE.  WILL BE INVOICED MONTHLY FOR THE MONTHS USED - NOT TO EXCEED FIGURE ROSE MOVIN	4	846.00	3,384.00

**Quotation Totals**

<b>Sub Total</b>	105,739.61
FOMCORE FREIGHT	714.00
SMITH SYST FREIGHT	3,860.00
MEDIA TECH FREIGHT	988.00
STEELCASE COM FABRIC LINE 1	152.00
<b>Grand Total</b>	<b>111,453.61</b>

TITLE OF PRODUCT TRANSFERS UPON RECEIPT BY CUSTOMER.

ACCEPTED BY \_\_\_\_\_ TITLE \_\_\_\_\_ DATE \_\_\_\_\_



2595 Bellingham • Troy, MI 48083 • **248.823.5400** • 248.823.5401 Fax  
 2211 Old Earhart Rd. Ste.190 • Ann Arbor, MI 48105 • **248.823.5400** • 248.823.5401 Fax  
 3201 Pine Tree Rd. Ste. A • Lansing, MI 48911 • **517.886.0072** • 248.823.5401 Fax  
 5160 Alliance Dr. • Bay City, MI 48706 • **989.895.8574** • 989.895.8545 Fax  
 4 North St. Clair St. • Toledo, OH 43604 • **419.662.2040** • 248.823.5401 Fax

**Quotation 357812**  
**Page 12 / 12 (cont'd)**

[yourNBS.com](http://yourNBS.com)

Remit Payments to: NBS, 6973 Reliable Parkway, Chicago, IL 60686

**End of Quotation**

TITLE OF PRODUCT TRANSFERS UPON RECEIPT BY CUSTOMER.

ACCEPTED BY \_\_\_\_\_ TITLE \_\_\_\_\_ DATE \_\_\_\_\_



2595 Bellingham • Troy, MI 48083 • 248.823.5400 • 248.823.5401 Fax  
 2211 Old Earhart Rd. Ste.190 • Ann Arbor, MI 48105 • 248.823.5400 • 248.823.5401 Fax  
 3201 Pine Tree Rd. Ste. A • Lansing, MI 48911 • 517.886.0072 • 248.823.5401 Fax  
 5160 Alliance Dr. • Bay City, MI 48706 • 989.895.8574 • 989.895.8545 Fax  
 4 North St. Clair St. • Toledo, OH 43604 • 419.662.2040 • 248.823.5401 Fax

**Quotation 352959**

**Quote Date** 01/30/23  
**Project** 221078  
**Customer** L00002  
**Terms** NET 10 DAYS  
**Account Representative** FERNANDO SANJUAN

**yourNBS.com**      **Remit Payments to:** NBS, 6973 Reliable Parkway, Chicago, IL 60686

**Quote To**

Accounts Payable  
 Livonia Public Schools  
 15125 FARMINGTON RD  
 LIVONIA, MI, 48154-5413

**Ship To**

PHILLIP FRANCIS  
 Benjamin Franklin High School  
 31000 Joy Rd  
 Media Center/Thread Product  
 Livonia, MI, 48150

**Phone** 3135239156  
**Fax** 7344214870

**Phone** +1 (734) 744-2554

[pfrancis@livoniapublicschools.org](mailto:pfrancis@livoniapublicschools.org)

**Sales Location** Troy

**E&I CONTRACT PRICING HAS BEEN APPLIED**

**PRICING IS VALID FOR 30 DAYS**

**REVISION 1-30-23: Surcharge Omitted**

Description	Quantity	Unit Price	Extended Price
<b>CLARIFICATIONS - CLARIFICATIONS</b> Assumes Tying Into Existing Circuit/Jbox at Infeed Location Excludes the Removal of Existing Carpet Tile All Work to be Done During Normal Business Hours (Mon – Fri 7:00am-3:30pm) All Work to be Performed by Non-Union Labor All Work to be Performed by Licensed Electrician Excludes Pulling Electrical Permit Assumes Work to be Done in (1) Phase Excludes Correcting Existing Code Violation (if any) Current Manufacturing Lead Time is Approx. 6-8 Weeks Area of Work to be Free/Clear of Furniture and Obstructions Approved Shop Drawings Required Prior to Order Entry	1	N/C	N/C

TITLE OF PRODUCT TRANSFERS UPON RECEIPT BY CUSTOMER.

ACCEPTED BY \_\_\_\_\_ TITLE \_\_\_\_\_ DATE \_\_\_\_\_

yourNBS.com

Remit Payments to: NBS, 6973 Reliable Parkway, Chicago, IL 60686

Description	Quantity	Unit Price	Extended Price
<b>Furnish &amp; Install (2) Runs of Steelcase Thread</b> (1) 84" Powertrack Infeed – Dual Circuit Wall Infeed (1) 24" Powertrack Infeed – Single Circuit Floor Box Infeed (1) 36" Powertrack Infeed (1) 84" Powertrack Infeed (2) 120" Powertrack Infeed (3) 96" Powertrack Infeed (2) 144" Powertrack Infeed (1) Blank Connector (3) 1-Door Connectors (9) 2-Door Connectors (5) Power Hubs – Low Profile Plug (2) Power Hubs – 3 Prong Plug (16) Plug Adapters See drawing dated 12/15/22 (THREAD)	1	16,349.39	16,349.39
<b>Quotation Totals</b>			
Sub Total			<b>16,349.39</b>
Grand Total			<b>16,349.39</b>

End of Quotation

TITLE OF PRODUCT TRANSFERS UPON RECEIPT BY CUSTOMER.

ACCEPTED BY \_\_\_\_\_ TITLE \_\_\_\_\_ DATE \_\_\_\_\_