



NORTHEAST METRO
Intermediate School District

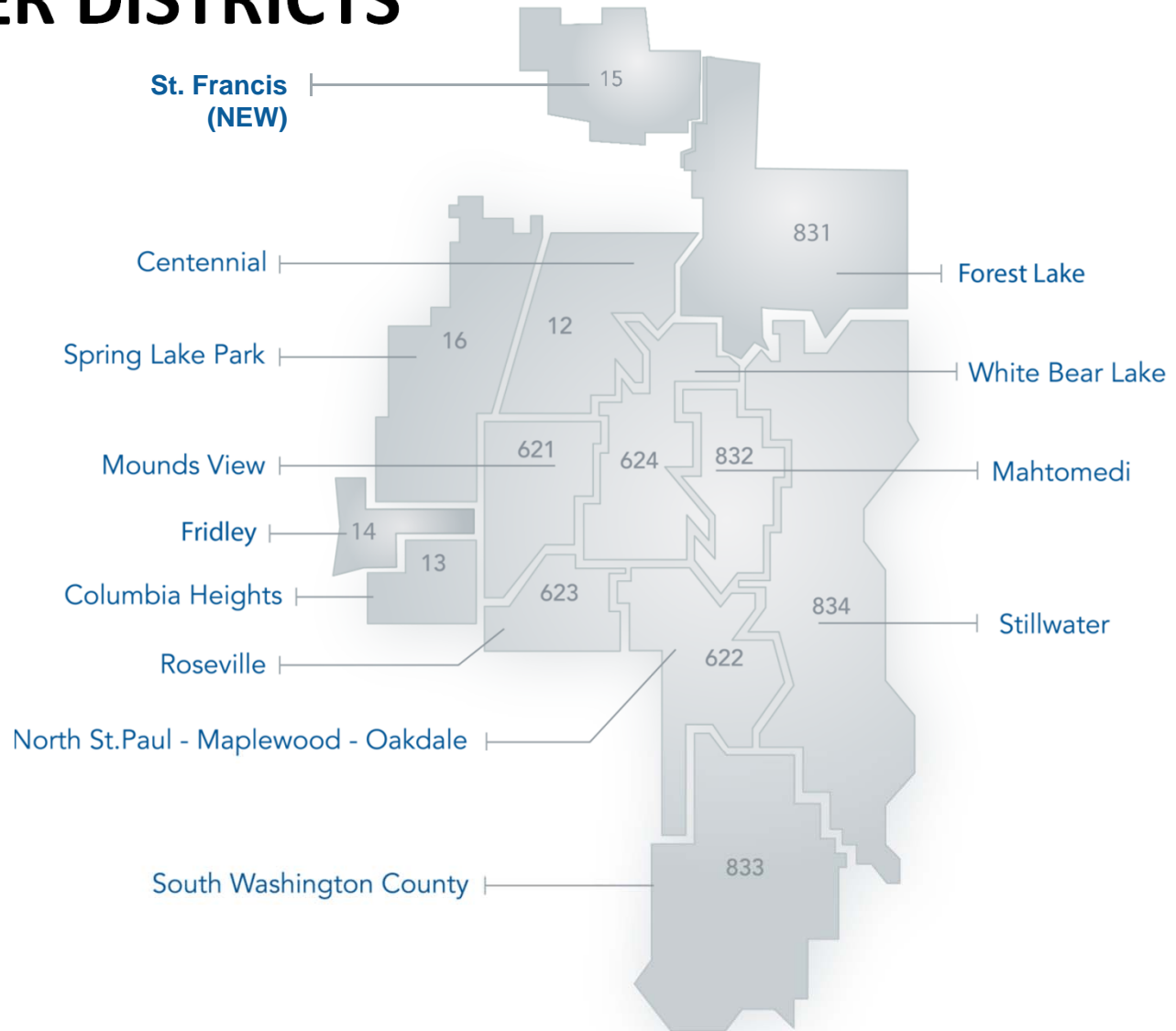
| 916

partners in education

FOREST LAKE SCHOOL BOARD

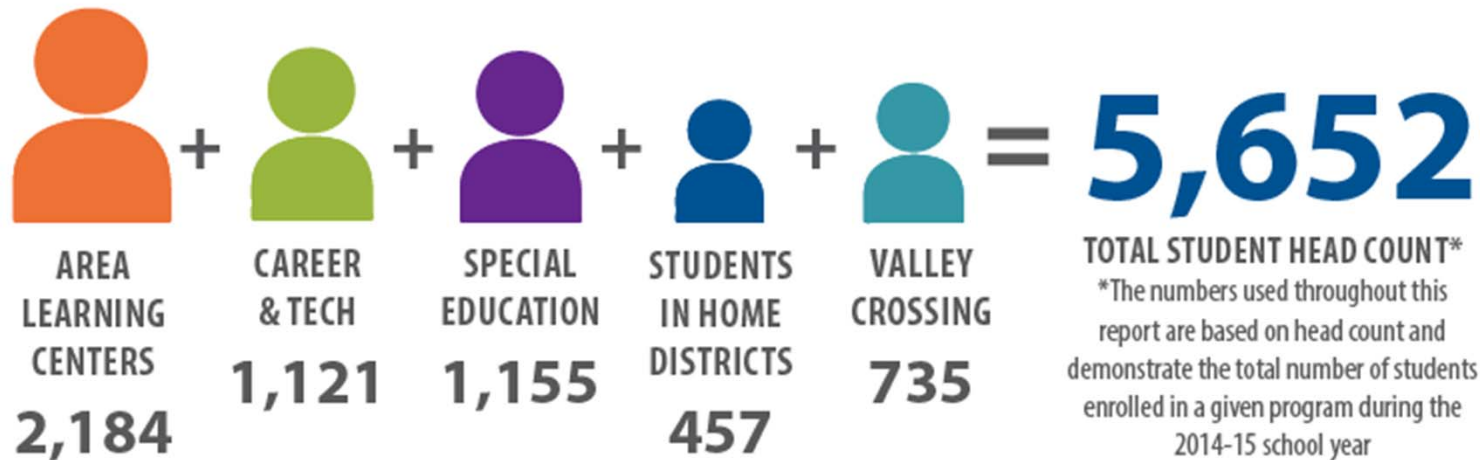
February 2016

MEMBER DISTRICTS



BY THE NUMBERS

STUDENTS



STAFF



89%

OF STAFF PROVIDE DIRECT STUDENT SUPPORT

Northeast Metro 916 employs a high staff to student ratio in some programs, with a large number of teachers and education assistants, as well as other licensed positions such as social workers, licensed school nurses, and more.

SPECIAL EDUCATION ENROLLMENT FOR FOREST LAKE

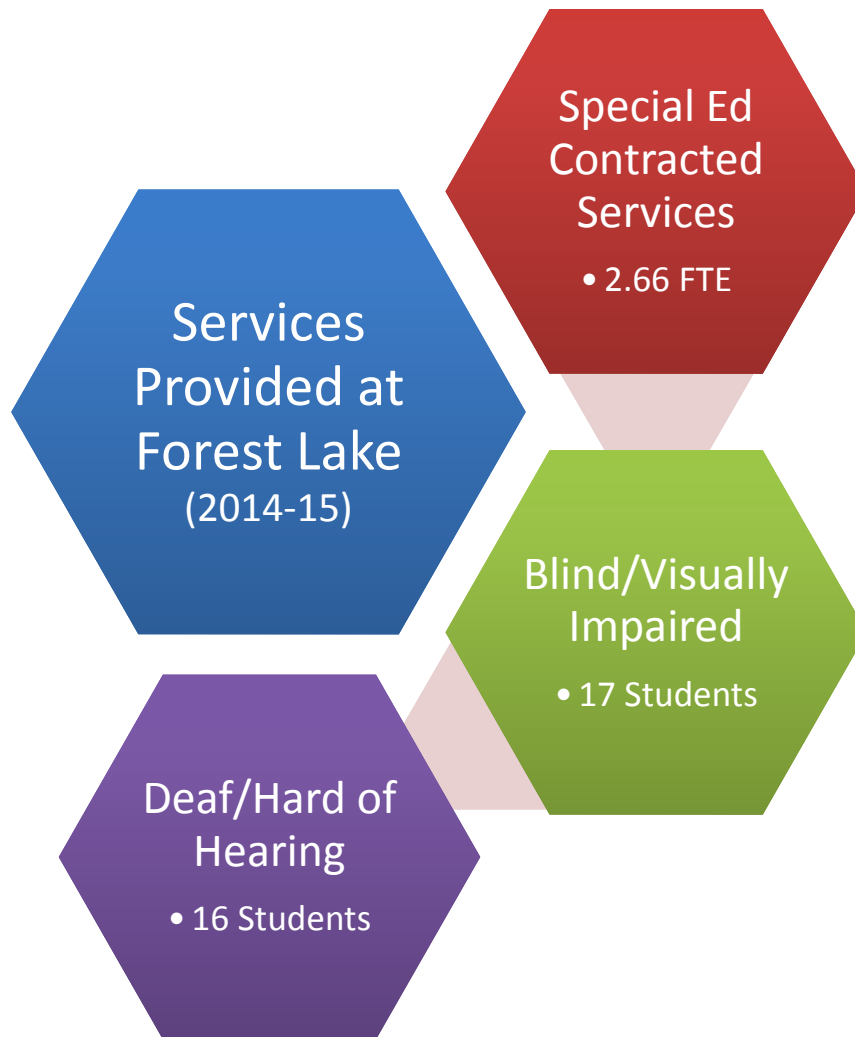
Program	5-year Total	5-year Average	2015-16 <i>As of 1/29/16</i>
Auditory/Oral	2	0.4	0
Assessment Center	1	0.2	0
Bellaire Education Center	10	2	0
Capitol View ALP	17	3.4	5
Capitol View CAP	19	3.8	7
Karner Blue*	26	5.2	9
Project Return	6	1.2	0
South Campus	9	1.8	2
WELS-North	3	.6	3
WELS-South	4	.8	0
TOTAL	97	19.4	26

*Includes former elementary sites prior to opening Karner Blue

2014-15 TRANSITIONS FROM SPECIAL EDUCATION TO HOME DISTRICT

Program	Total
ALP John Glenn/VCCS	6
Bellaire Education Center	11
Capitol View ALP	5
Capitol View CAP	1
Karner Blue	13
South Campus	1
WELS-North	0
WELS-South	0
TOTAL	37

SERVICES



FACILITIES PLAN UPDATE



**Karner Blue
Education Center**
(Blaine)
Fall 2014



**Pankalo
Education Center**
(Lake Elmo)
Fall 2017



**Capitol View
Center**
(Little Canada)
Fall 2018



KARNER BLUE SUCCESS STORIES

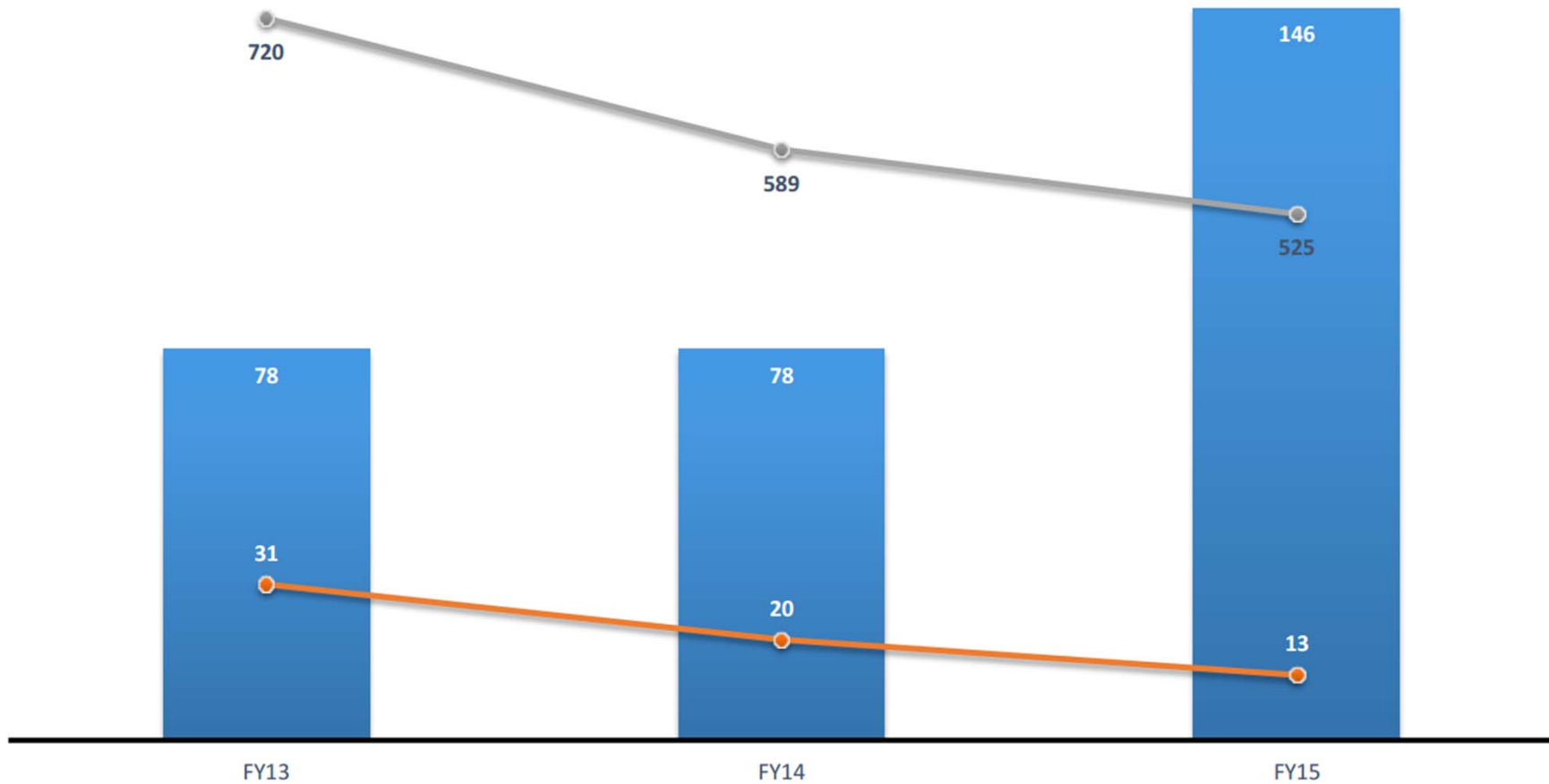
- Parents report that their children like, and want to come to school first time ever
- Students are transitioning back to their home schools faster
- Staff have more time to dedicate to teaching and are discussing instructional strategies versus problem solving behavioral issues
- Locked exits are a significant safety improvement for students and staff



STUDENT AND STAFF SAFETY

Elementary programs data trends

Students Served Total Medical Injuries Total Restrictive Procedures



PANKALO EDUCATION CENTER UPDATE

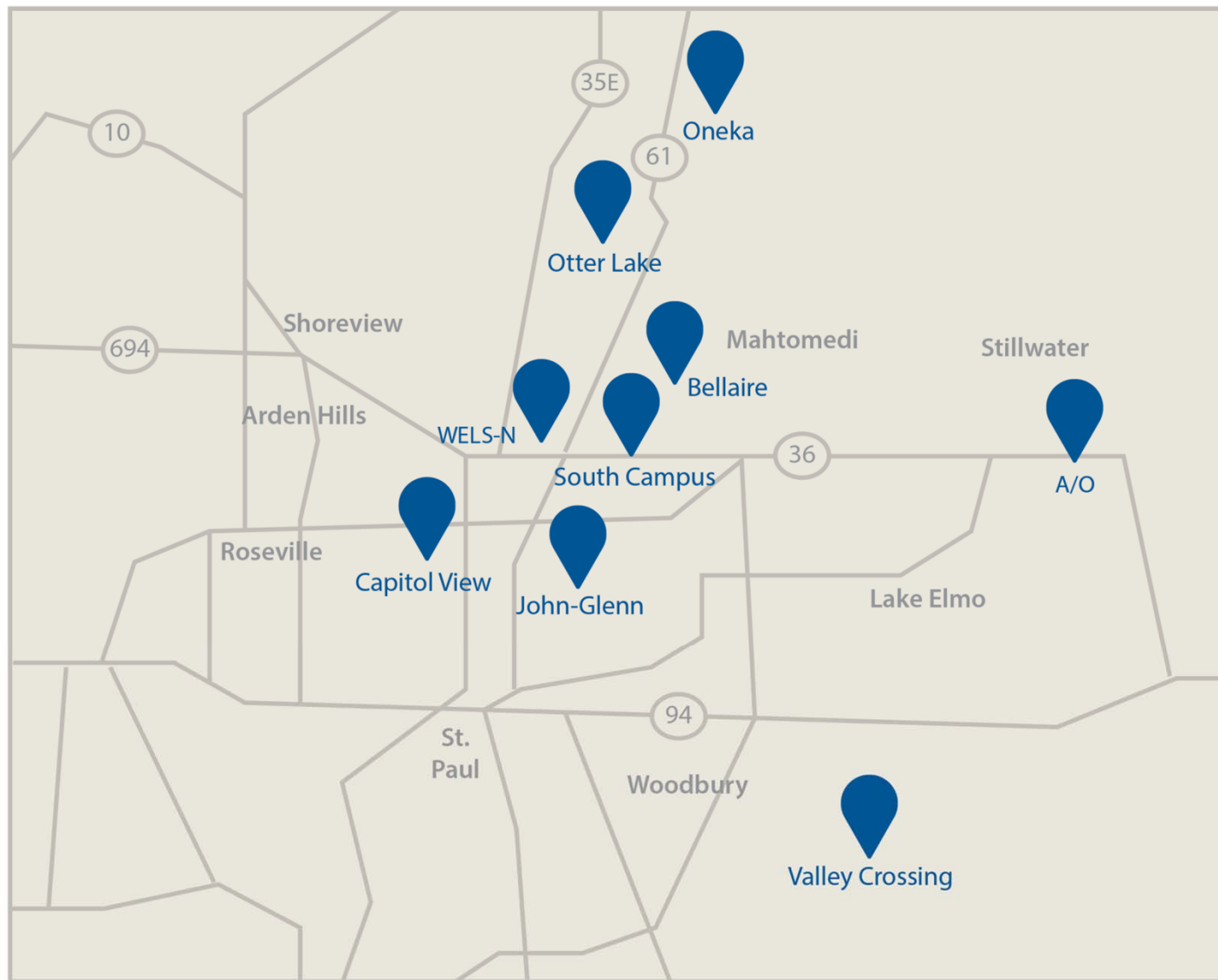
- Greek for “complete beauty”
- Creative Arts theme
- Design Improvements:
 - Natural light will be visible in all classrooms as well as the common areas
 - The seclusion rooms will be designed with softer walls and colors to provide a more calming environment
 - The small windows in the classrooms at elementary student height (pictured above) have been popular. In the new design, these windows will be deeper and include a bench



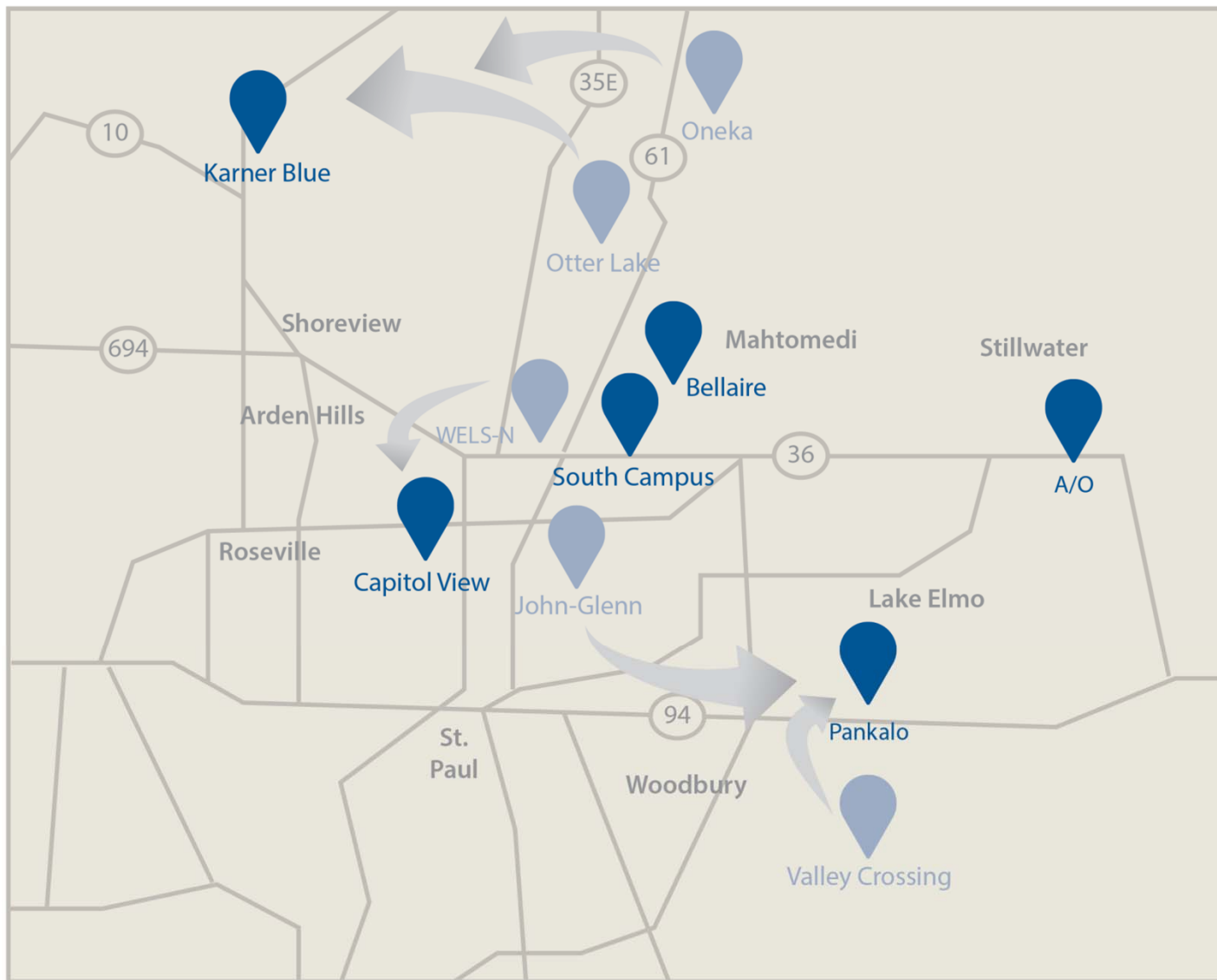
CAPITOL VIEW CENTER UPDATE

- Building will house multiple level IV special education programs, East View Area Learning Center, conference center and offices
 - Design development occurring now. Highlights include:
 - Natural lighting to all classroom spaces; LED lighting for sensory needs
 - Acoustic improvements to minimize disruption and escalation of student behaviors
 - Individual breakout areas available for all programs throughout the building
 - Unique entry points for different student populations
 - Improved specialty teaching areas for art, science and daily living skills
 - Over two acres of outdoor space to program for our students
 - Member district transportation leaders input and review on site layout and traffic flow for getting students to and from the building
-

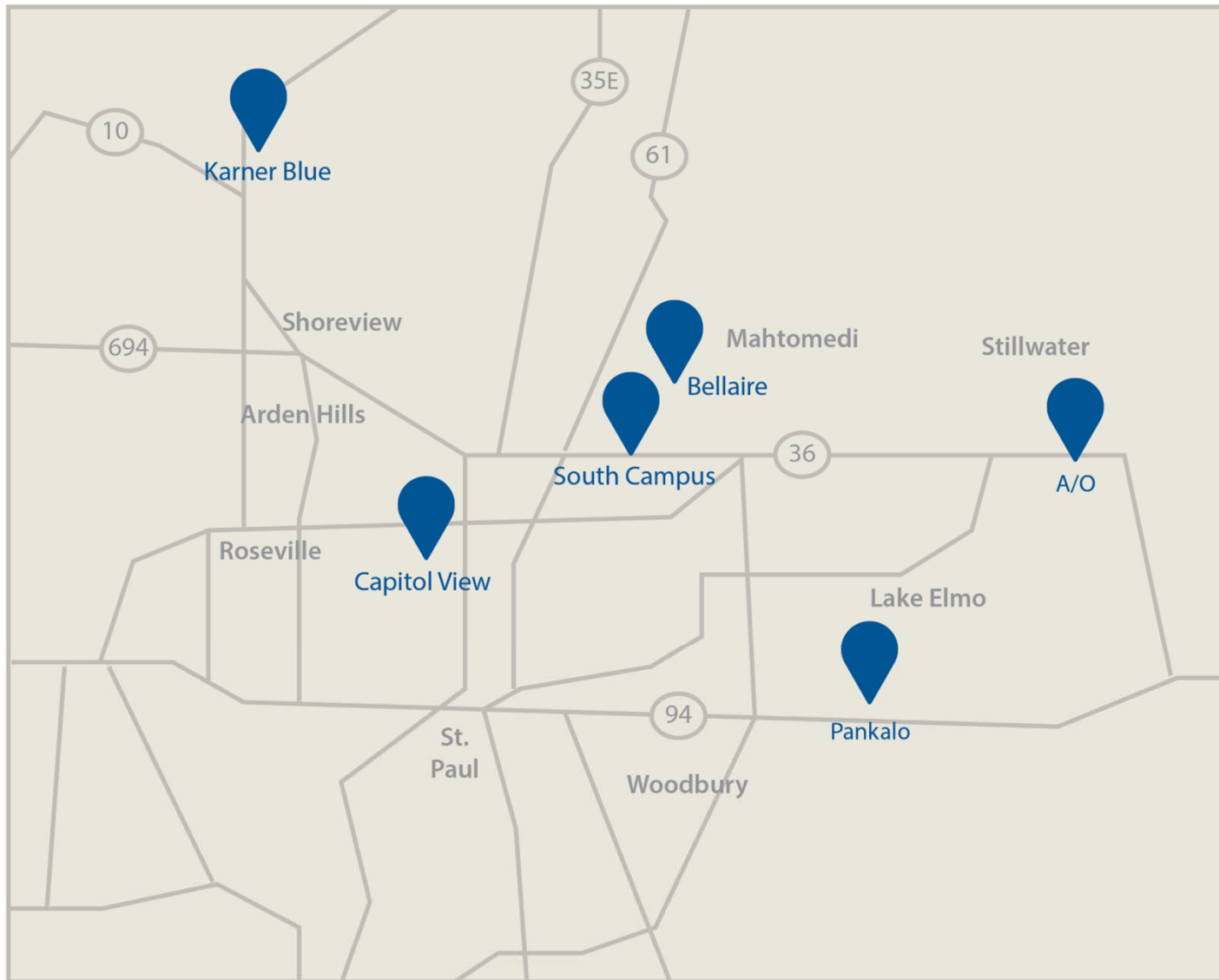
SPECIAL ED FACILITIES: BEFORE



SPECIAL ED FACILITIES: TRANSITION



SPECIAL ED FACILITIES: FUTURE

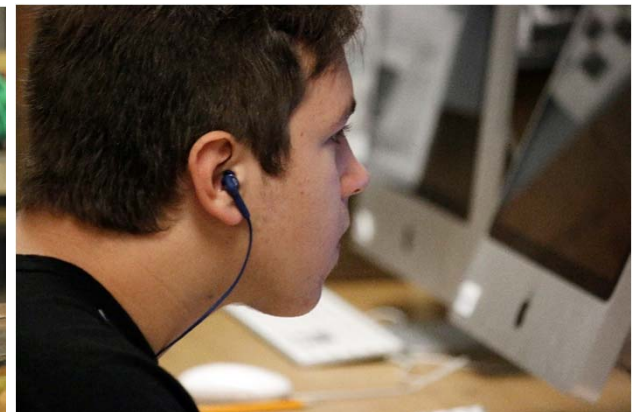


CAREER & TECH CENTER FOR FOREST LAKE

6

Potential Articulated &
Century College
Credits Earned

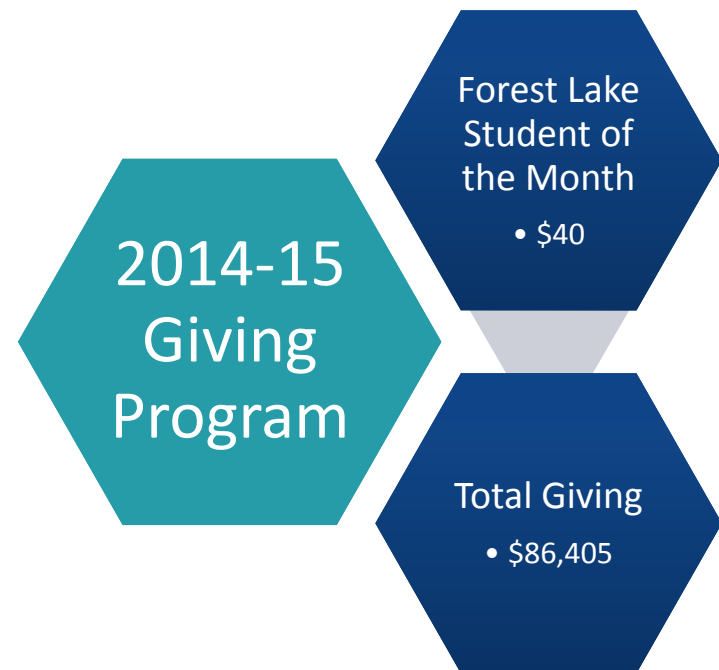
1	0	0	0	0	0	0	0	2	0	2	0	0	0	0	0	0
ANIMAL SCIENCE	AUTO DISMANTLING	AUTOMOTIVE TECHNOLOGY	COMPUTERS/GAME DESIGN	CONSTRUCTION OCCUPATIONS	COSMETOLOGY I	COSMETOLOGY II	DENTAL OCCUPATIONS	DESIGN & DIGITAL MEDIA	DIESEL TRUCKS/ENGINES	EDUCATION/HUMAN SERVICES	EMERGENCY MEDICAL TECH	EEE MARKETING	LAW ENFORCEMENT	MAINTENANCE/ENVIRONMENT	MEDICAL CAREERS	PAES (JOB SKILLS LAB)



916 EDUCATION FOUNDATION



- The majority of revenue comes from three major fundraisers:
 - Membership Campaign
 - Gala
 - Golf Tournament
- During the 2015-16 membership campaign, 270 of our employees became members for a total of \$40,005



THANK YOU!

Northeast Metro 916 Intermediate School District
2540 County Road F East, White Bear Lake, MN
55110
651-415-5100 / www.nemetro.k12.mn.us



Connie Hayes

Superintendent

651-415-5656

connie.hayes@nemetro.k12.mn.us