



Denton
Independent
School
District

Quarterly Report 3Q19



TEMPLETON
DEMOGRAPHICS

hanleywood | metrostudy

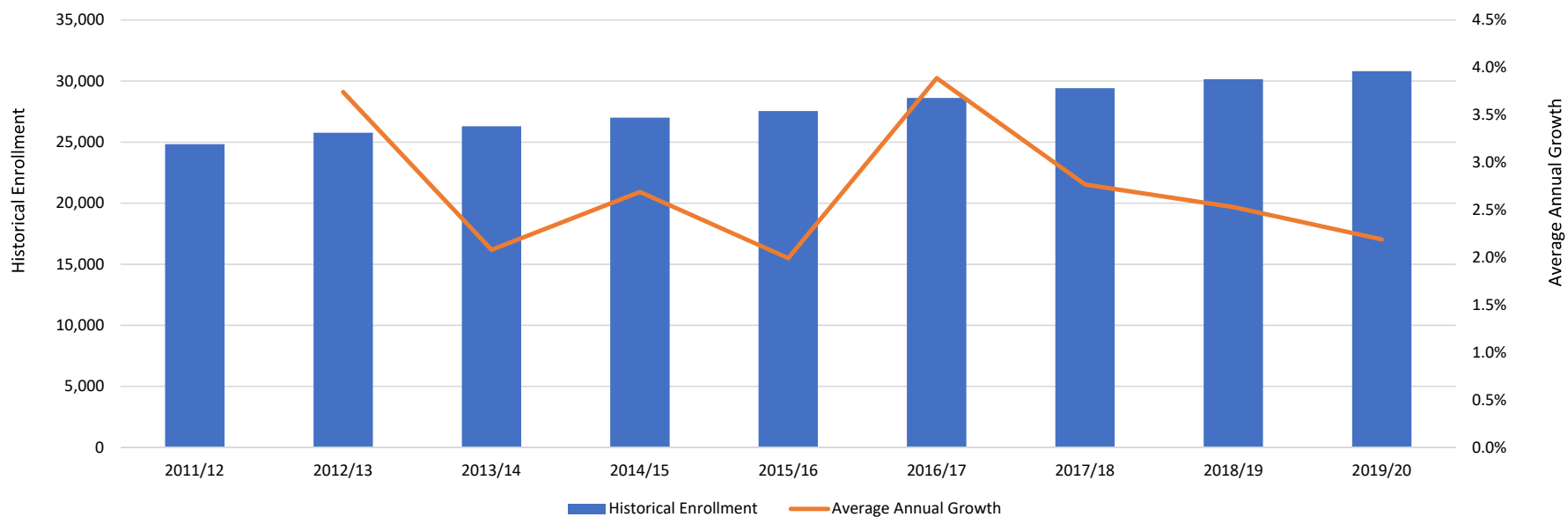


Enrollment History

Year (Oct.)	EE	PK	K	1st	2nd	3rd	4th	5th	6th	7th	8th	9th	10th	11th	12th	Total	Growth	% Growth
2015/16	114	1,029	1,954	2,143	2,088	2,190	2,152	2,115	2,154	2,128	2,094	2,091	1,985	1,756	1,566	27,559		
2016/17	114	1,016	2,066	2,044	2,194	2,181	2,231	2,219	2,160	2,202	2,175	2,293	2,084	1,967	1,685	28,631	1,072	3.9%
2017/18	98	1,048	2,081	2,100	2,119	2,230	2,251	2,300	2,264	2,232	2,205	2,346	2,245	2,018	1,887	29,424	793	2.8%
2018/19	78	1,082	2,177	2,117	2,182	2,136	2,274	2,303	2,335	2,328	2,312	2,371	2,313	2,173	1,988	30,169	745	2.5%
2019/20	62	1,111	2,146	2,252	2,129	2,212	2,169	2,322	2,332	2,410	2,407	2,547	2,402	2,216	2,113	30,830	661	2.2%

*Yellow Box = largest grade per year
Green Box = second largest grade per year

Denton ISD Historical Enrollment





Annual Enrollment Change

Year (Oct.)	EE	PK	K	1st	2nd	3rd	4th	5th	6th	7th	8th	9th	10th	11th	12th	Total	Growth	% Growth
2015/16	114	1,029	1,954	2,143	2,088	2,190	2,152	2,115	2,154	2,128	2,094	2,091	1,985	1,756	1,566	27,559		
2016/17	114	1,016	2,066	2,044	2,194	2,181	2,231	2,219	2,160	2,202	2,175	2,293	2,084	1,967	1,685	28,631	1,072	3.9%
2017/18	98	1,048	2,081	2,100	2,119	2,230	2,251	2,300	2,264	2,232	2,205	2,346	2,245	2,018	1,887	29,424	793	2.8%
2018/19	78	1,082	2,177	2,117	2,182	2,136	2,274	2,303	2,335	2,328	2,312	2,371	2,313	2,173	1,988	30,169	745	2.5%
2019/20	62	1,111	2,146	2,252	2,129	2,212	2,169	2,322	2,332	2,410	2,407	2,547	2,402	2,216	2,113	30,830	661	2.2%

*Yellow Box = largest grade per year
Green Box = second largest grade per year

Projection	78	1,088	2,184	2,232	2,193	2,249	2,200	2,346	2,332	2,398	2,402	2,482	2,351	2,231	2,148	30,914	Diff	-0.3%
Difference	-16	23	-38	20	-64	-37	-31	-24	0	12	5	65	51	-15	-35	-84		

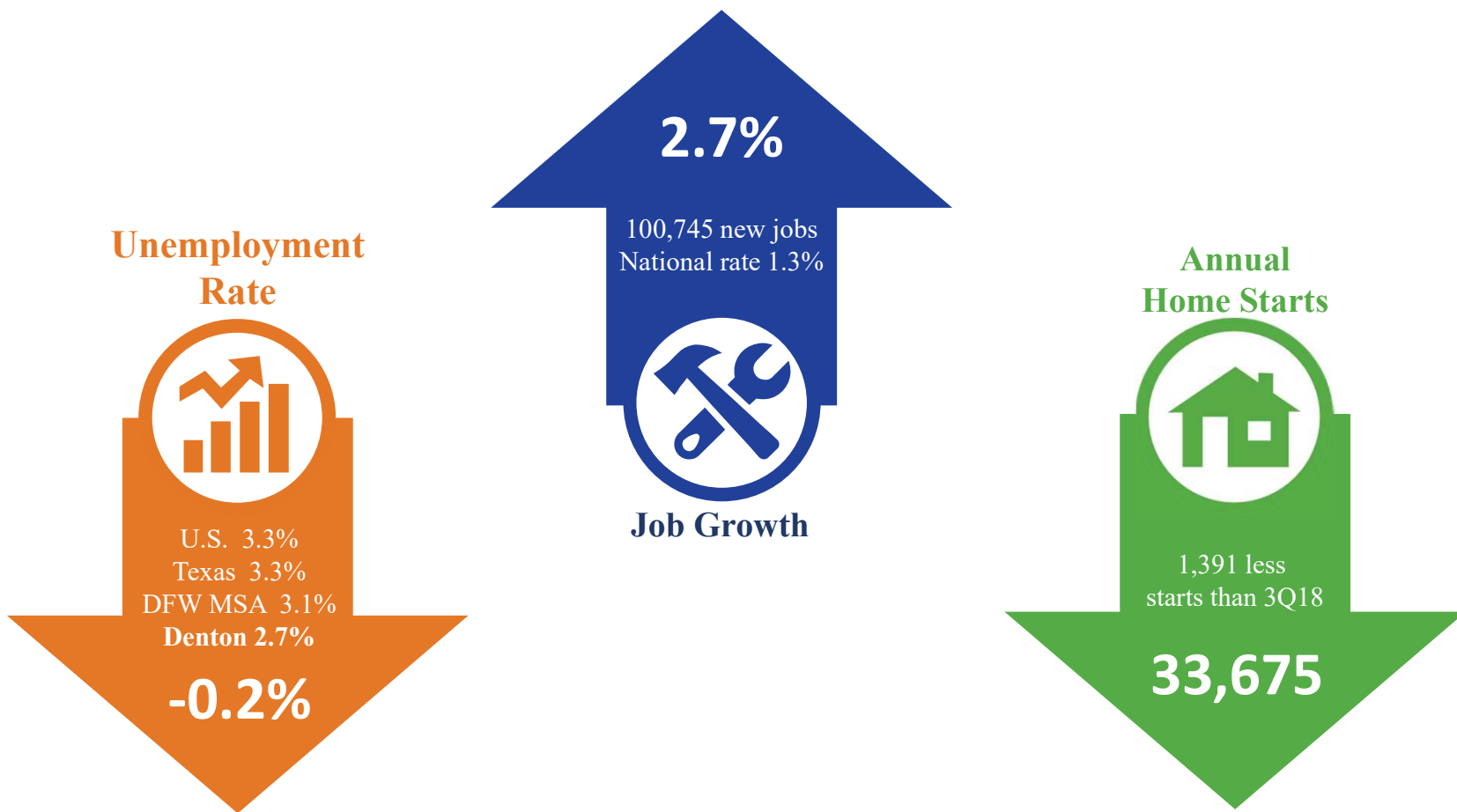
Year	EE	PK	KG	1st	2nd	3rd	4th	5th	6th	7th	8th	9th	10th	11th	12th	Elem	Mid	High
3-year AVG	0.817	1.030	1.013	1.023	1.027	1.013	1.022	1.025	1.016	1.031	1.024	1.085	0.993	0.965	0.972	1.021	1.024	1.004
2016/17	1.000	0.987	1.057	1.046	1.024	1.045	1.019	1.031	1.021	1.022	1.022	1.095	0.997	0.991	0.960	1.037	1.022	1.011
2017/18	0.860	1.031	1.007	1.016	1.037	1.016	1.032	1.031	1.020	1.033	1.001	1.079	0.979	0.968	0.959	1.023	1.018	0.996
2018/19	0.796	1.032	1.046	1.017	1.039	1.008	1.020	1.023	1.015	1.028	1.036	1.075	0.986	0.968	0.985	1.026	1.026	1.004
2019/20	0.795	1.027	0.986	1.034	1.006	1.014	1.015	1.021	1.013	1.032	1.034	1.102	1.013	0.958	0.972	1.013	1.026	1.011

- Denton ISD added 660 students this fall for an annual growth rate of 2.2%
- Actual enrollment fell within 85 students of projected enrollment
- The district had historically low cohorts in KG, 2nd, 4th and 5th grades resulting in lower than average elementary cohort
- DISD had historically high cohorts in 9th and 10th grades





Economic Conditions – DFW Area (October 2019)

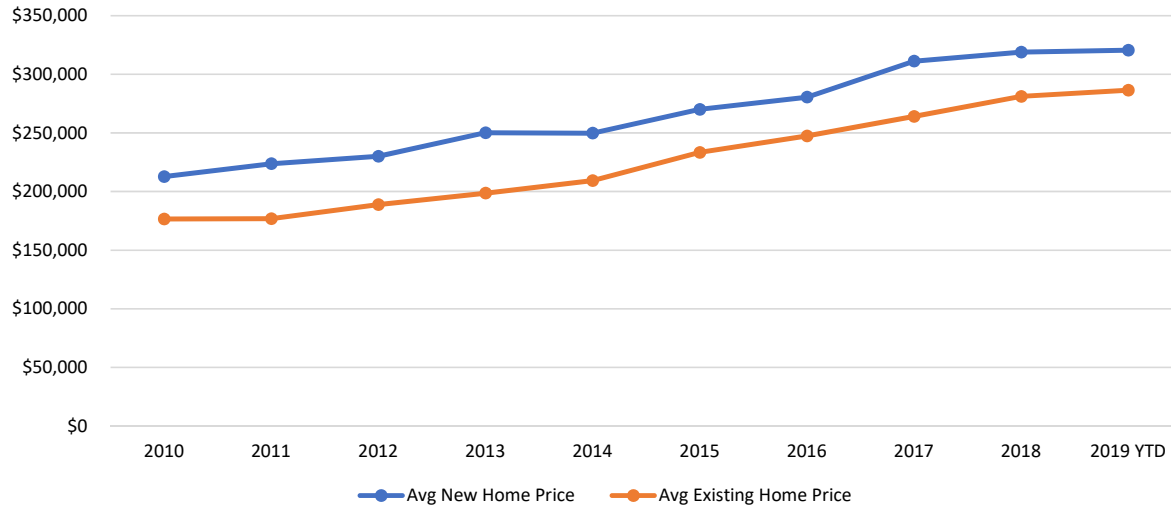




Denton ISD Housing Market

Average New vs. Existing Home Sale Price, 2010 – Oct 2019

Average District New vs Existing Home Sale Price, 2010 – Oct 2019



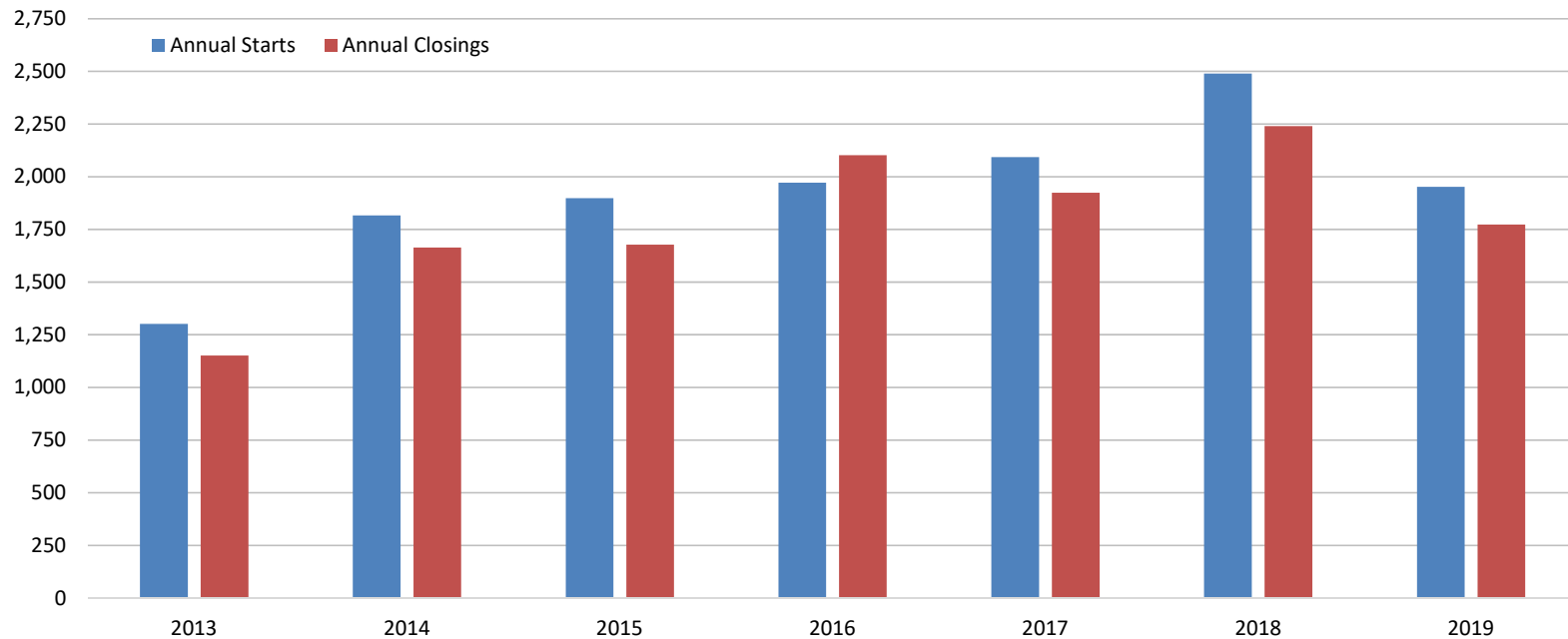
	Avg New Home Price	Avg Existing Home Price
2010	\$212,786	\$176,616
2011	\$223,697	\$176,861
2012	\$230,162	\$188,829
2013	\$250,144	\$198,542
2014	\$249,733	\$209,295
2015	\$270,065	\$233,333
2016	\$280,461	\$247,495
2017	\$311,187	\$264,084
2018	\$318,982	\$281,136
2019 YTD	\$320,624	\$286,424

- Since 2010, the average new home price in Denton ISD has increased by \$107,838, or 51%
- The average existing home price within the district has increased by 62%, or roughly \$109,808 since 2010





Denton ISD New Housing Activity



Starts	2013	2014	2015	2016	2017	2018	2019
1Q	191	434	335	532	447	555	572
2Q	426	466	451	480	536	801	638
3Q	357	457	607	543	608	563	742
4Q	328	459	505	417	502	571	
Total	1,302	1,816	1,898	1,972	2,093	2,490	1,952

Closings	2013	2014	2015	2016	2017	2018	2019
1Q	248	315	340	461	436	561	495
2Q	272	383	474	556	450	563	583
3Q	327	531	450	544	559	561	695
4Q	305	435	413	541	479	555	
Total	1,152	1,664	1,677	2,102	1,924	2,240	1,773

- Denton ISD started more than 742 homes in 3Q19, the most starts in the past ten years
- The district closed approx. 1,770 homes so far in 2019, putting them on pace to close more than 2,300 homes by the end of the year



DFW New Home Ranking Report

ISD Ranked by Annual Closings – 3Q19

Rank	District Name	Annual Starts	Annual Closings	VDL	Futures
1	Prosper ISD	2,361	2,771	4,216	21,262
2	Denton ISD**	2,478	2,329	5,066	34,586
3	Frisco ISD	2,093	2,153	4,133	4,470
4	Northwest ISD	1,972	1,793	3,413	20,429
5	Eagle Mt.-Saginaw ISD	1,750	1,647	1,914	17,736
6	Dallas ISD	1,667	1,517	1,973	5,655
7	Little Elm ISD	1,067	1,334	1,188	2,181
8	Lewisville ISD	1,151	1,255	1,908	3,124
9	Forney ISD	1,260	1,103	2,253	27,579
10	Crowley ISD	1,010	968	1,247	16,829
11	Mansfield ISD	929	967	1,181	7,288
12	Rockwall ISD	827	847	2,494	9,367
13	Royse City ISD	742	783	1,372	12,958
14	Wylie ISD	613	776	765	3,881
15	McKinney ISD	816	771	2,081	9,063
16	Princeton ISD	545	692	1,025	7,984
17	Melissa ISD	629	673	752	5,455
18	Fort Worth ISD	726	667	1,337	5,474
19	Allen ISD	554	663	1,139	1,023
20	Midlothian ISD	591	643	1,292	19,171

* Based on additional Templeton Demographics housing research

**Includes Age-Restricted subdivisions

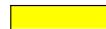






District Housing Overview by Elementary Zone

Elementary	Annual Starts	Quarter Starts	Annual Closings	Quarter Closings	Under Construction	Inventory	Vacant Dev. Lots	Futures
ADKINS	57	11	72	17	23	37	61	84
ALEXANDER	8	3	30	8	4	5	27	477
BELL	80	26	100	21	30	46	159	170
BLANTON	83	26	72	17	30	56	144	0
BORMAN	0	0	0	0	0	0	0	15,860
CROSS OAKS	0	0	0	0	0	0	142	297
EP RAYZOR	6	1	7	2	1	2	2	0
EVERS	180	68	55	44	128	136	260	1,199
GINNINGS	56	24	73	23	55	28	158	625
HAWK	19	10	12	0	1	3	1	109
HODGE	6	0	16	1	4	6	27	768
HOUSTON	69	3	137	34	3	9	0	60
MCNAIR	0	0	0	0	0	0	0	0
N RAYZOR	0	0	0	0	1	1	6	150
NELSON	0	0	3	0	0	0	0	0
PALOMA CREEK	34	9	28	8	12	24	166	0
PECAN CREEK	105	24	120	40	38	46	100	481
PROVIDENCE	194	48	196	42	70	130	892	2,466
RIVERA	0	0	0	0	0	0	0	400
RYAN	222	55	203	35	59	78	71	565
SAVANNAH	138	44	141	42	53	102	170	270
STEPHENS	66	21	50	16	30	42	138	98
UNION PARK	864	305	754	244	312	532	1,875	4,660
WILSON	94	17	91	33	27	41	147	1,300
GRAND TOTAL*	2,281	695	2,160	627	881	1,324	4,546	30,039

*Does NOT include Age-Restricted subdivisions

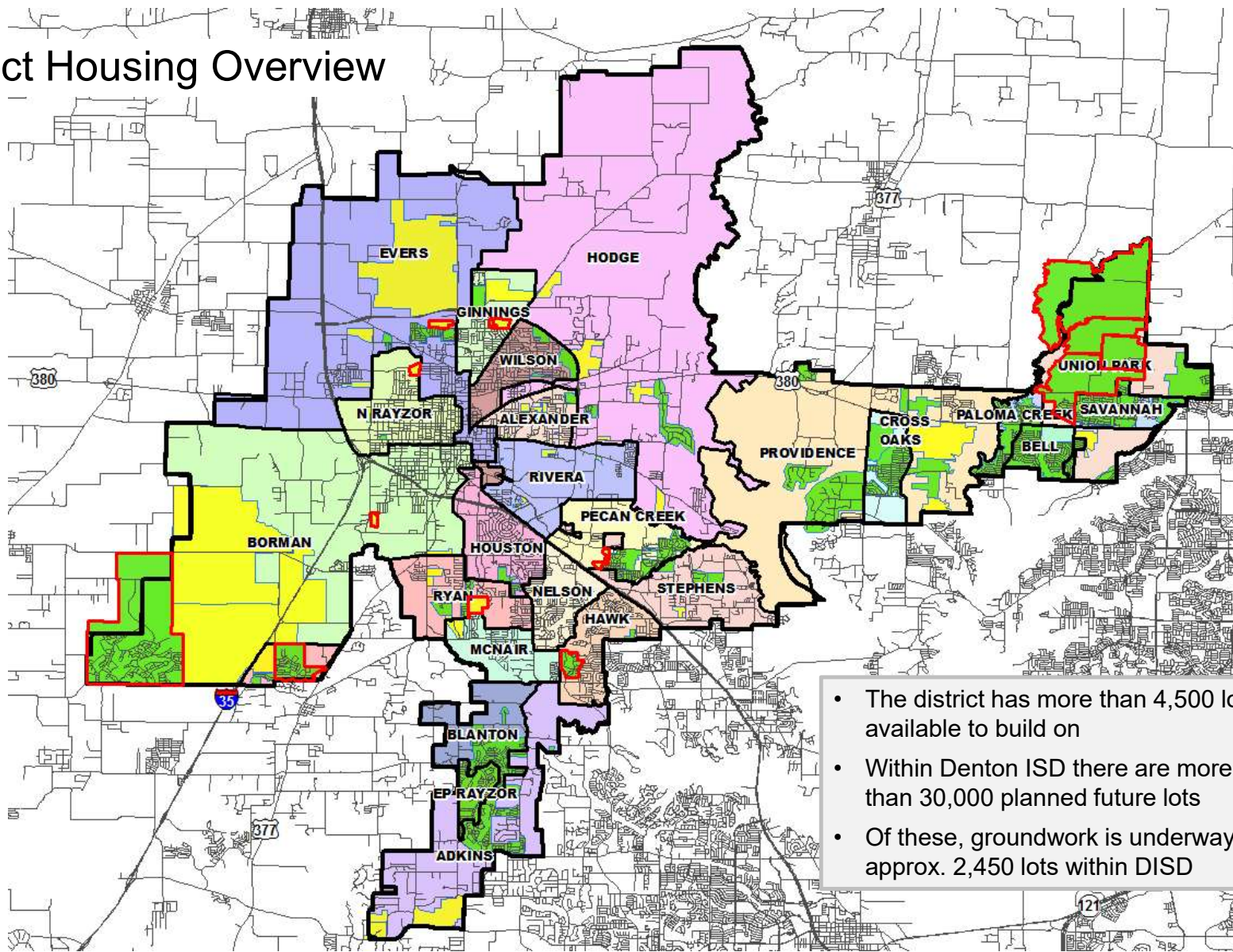
 Highest activity in the category

 Second highest activity in the category

 Third highest activity in the category



District Housing Overview



Subdivisions
ACTIVE
FUTURE
Groundwork Underway

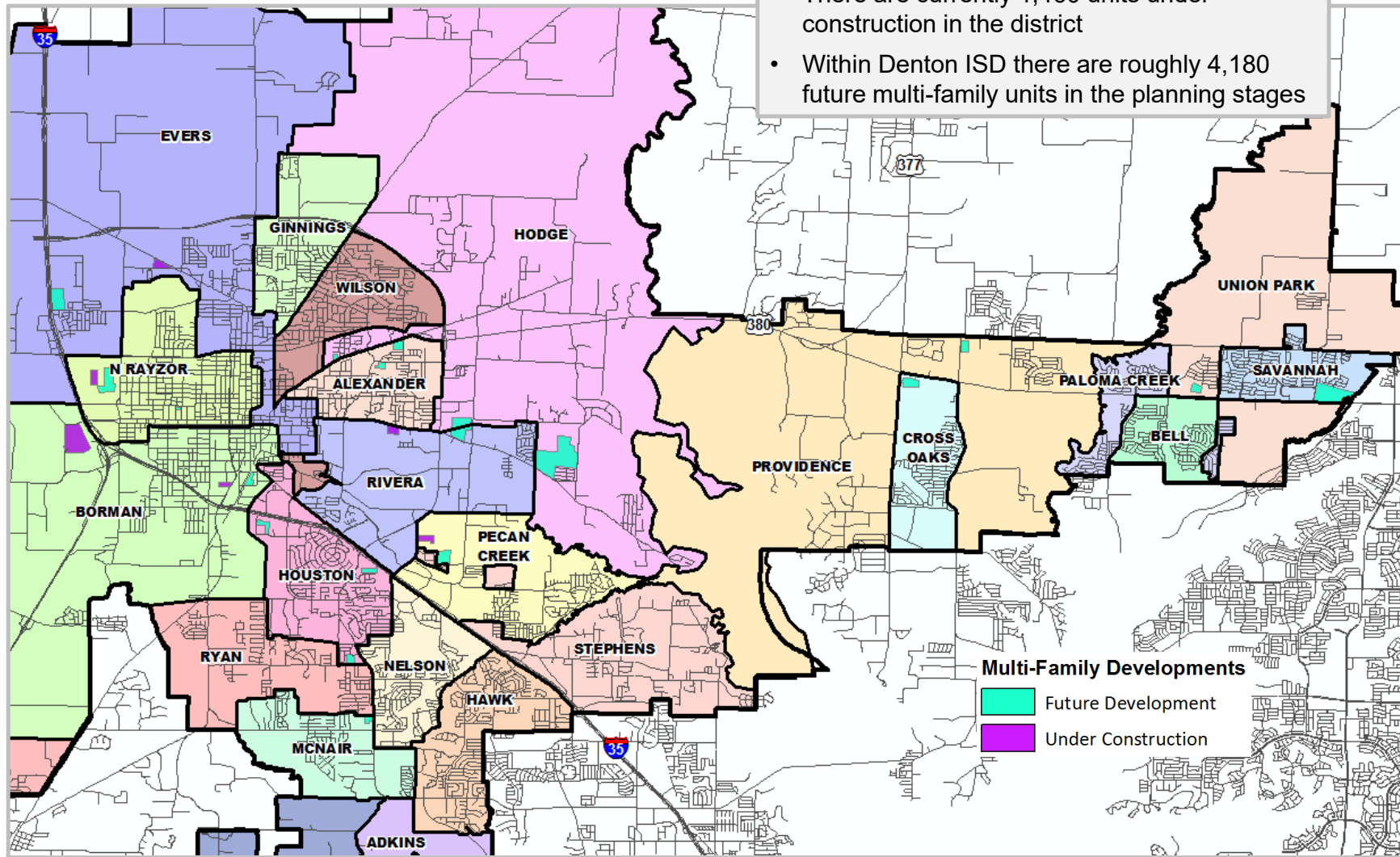
- The district has more than 4,500 lots available to build on
- Within Denton ISD there are more than 30,000 planned future lots
- Of these, groundwork is underway on approx. 2,450 lots within DISD





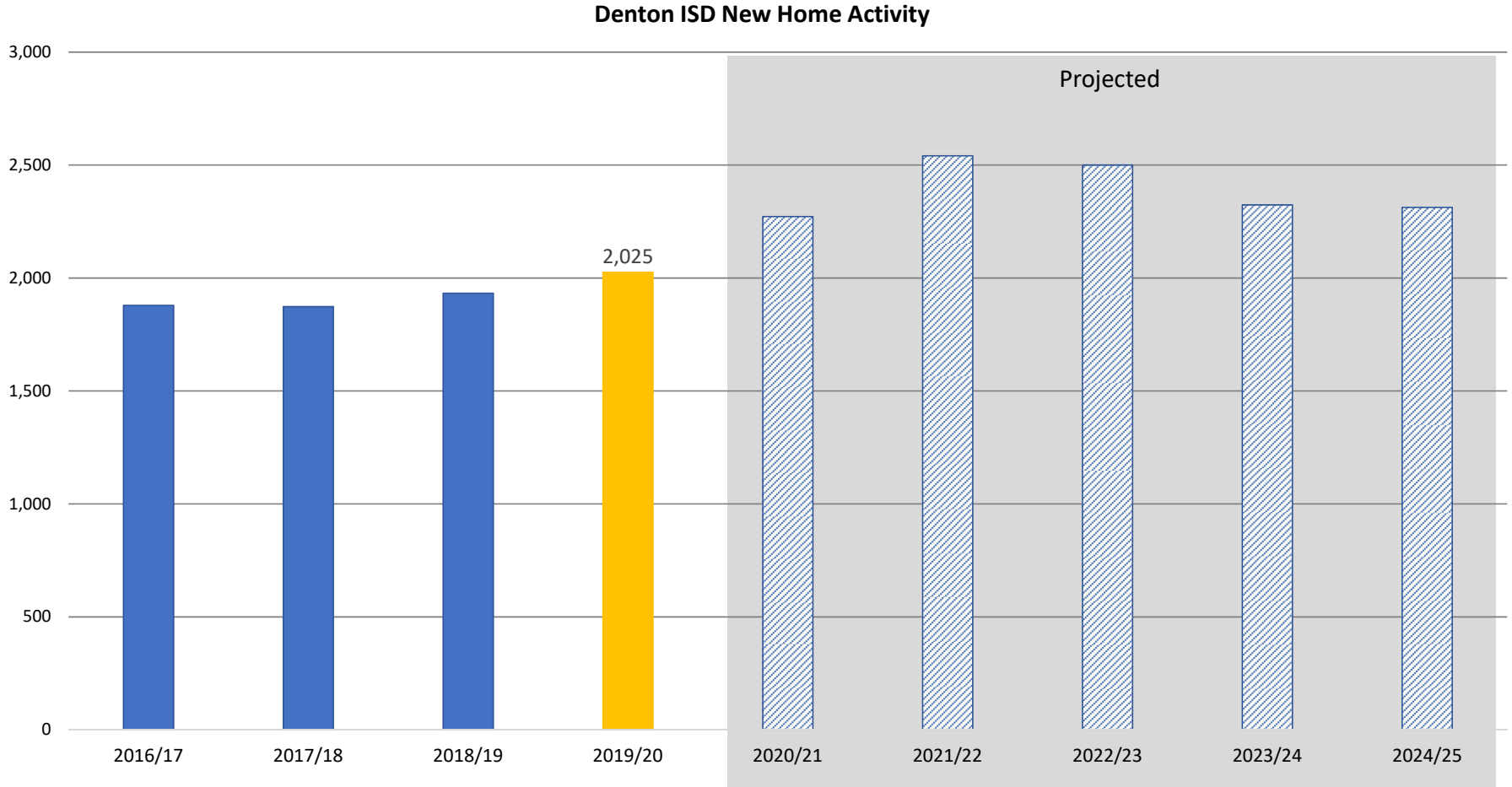
Multi-Family Housing Overview

- There are currently 1,460 units under construction in the district
- Within Denton ISD there are roughly 4,180 future multi-family units in the planning stages





Forecasted Denton ISD New Home Activity

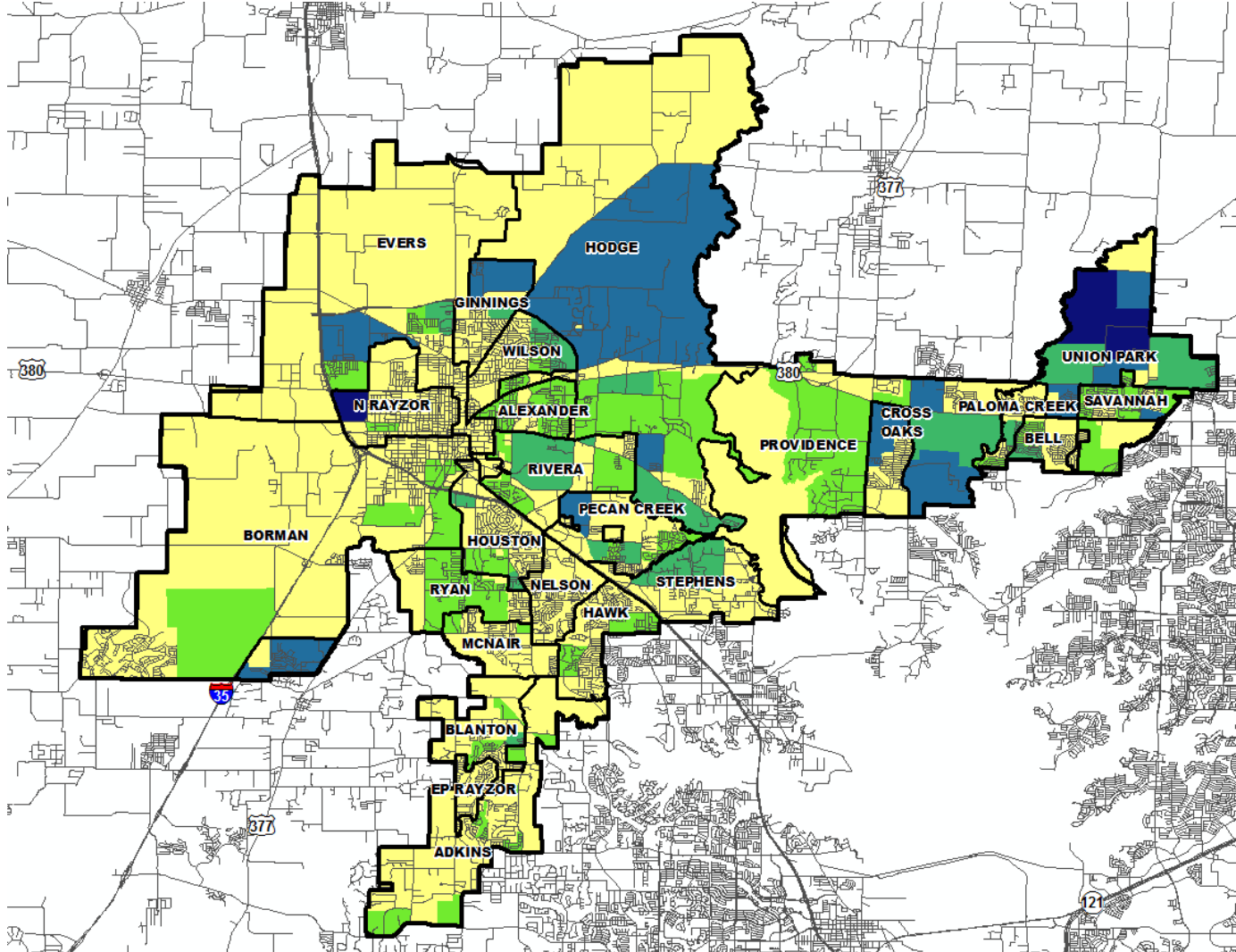


Denton ISD is forecasted to close roughly 2,250 – 2,500 new homes annually for the next 3-5 years

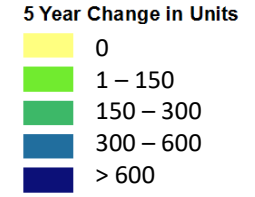




5 Year Change in Residential Units by Planning Area

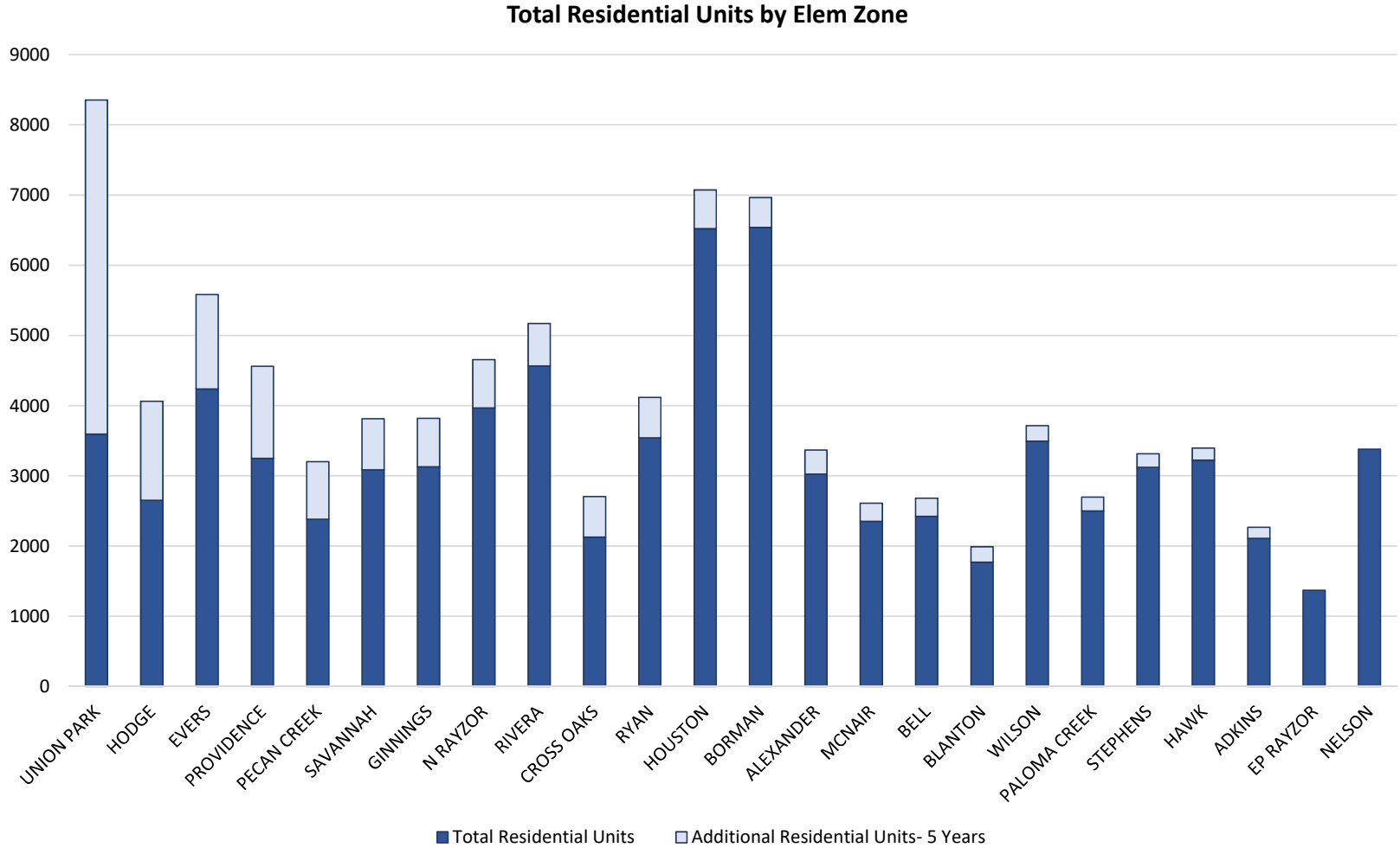


Elementary Zone	Total Change in Residential Units 2019/20- 2024/25
UNION PARK	4,759
HODGE	1,411
EVERS	1,347
PROVIDENCE	1,313
PECAN CREEK	821
SAVANNAH	728
GINNINGS	692
N RAYZOR	689
RIVERA	605
CROSS OAKS	578
RYAN	576
HOUSTON	555
BORMAN	428
ALEXANDER	344
MCNAIR	260
BELL	259
BLANTON	222
WILSON	220
PALOMA CREEK	198
STEPHENS	193
HAWK	173
ADKINS	159
EP RAYZOR	0
NELSON	0
TOTAL	16,530





Total Residential Units by Elementary Zone, 2019/20 – 2024/25





District Yields

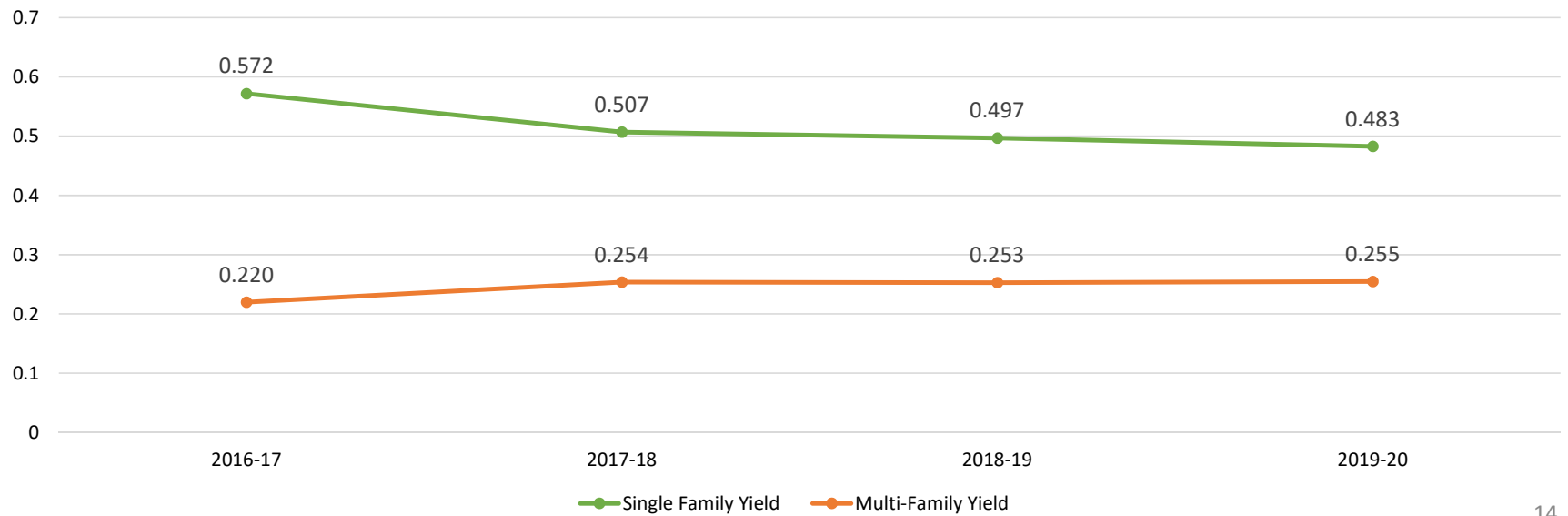


Single Family Yield
0.483



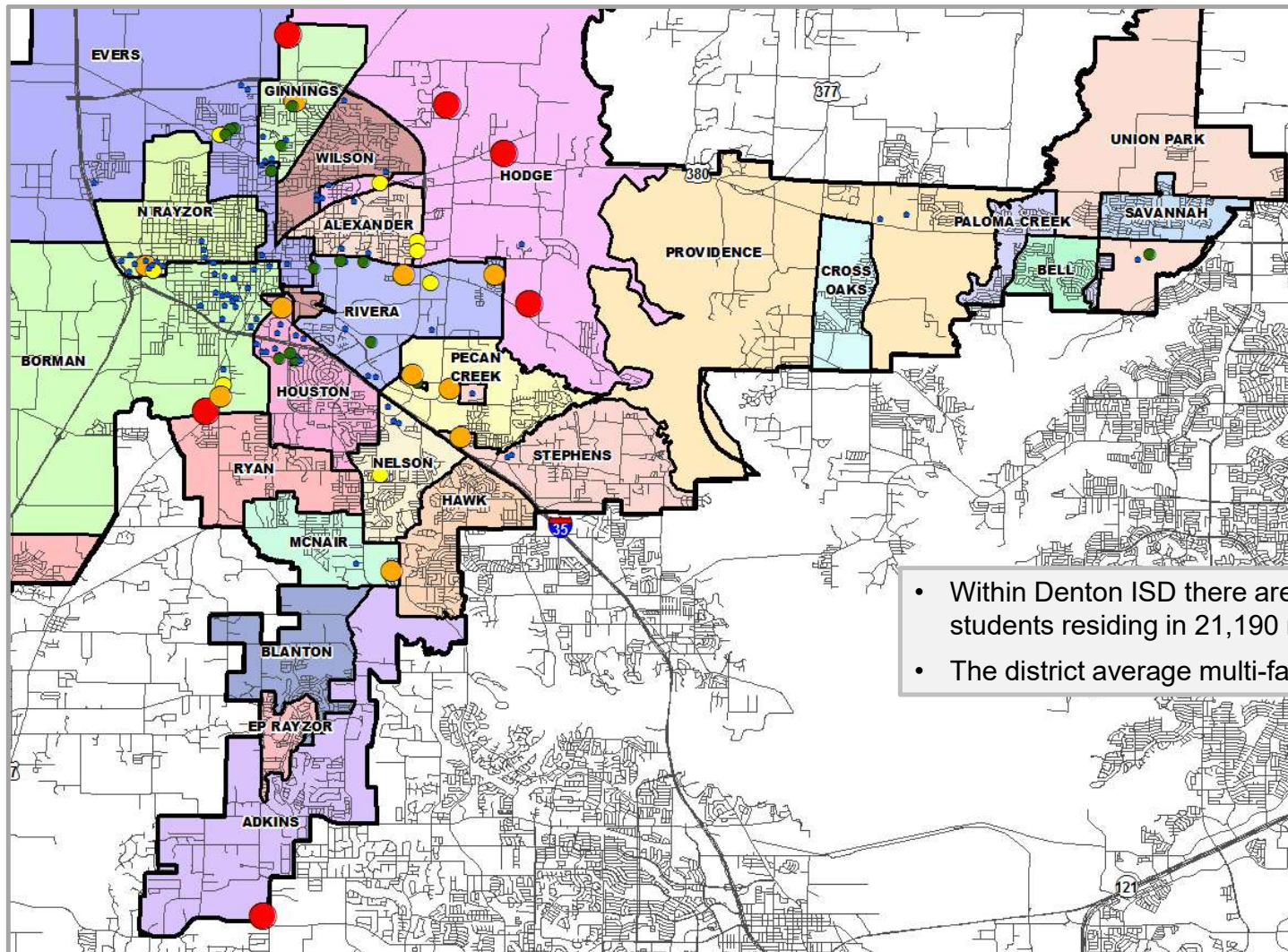
Multi-Family Yield
0.255

Denton ISD Yields, 2016/17 - 2019/20





District Yields



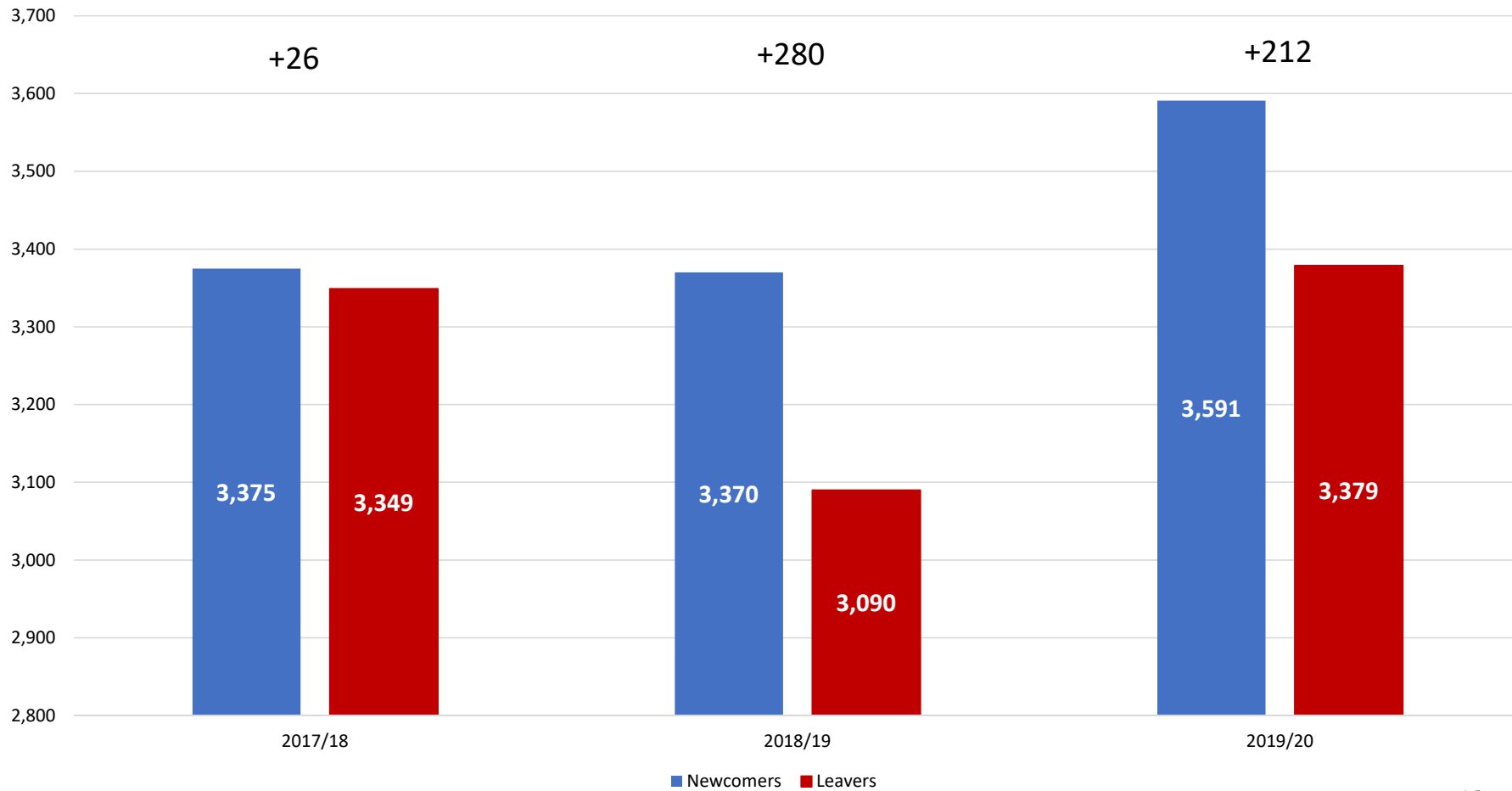
- Within Denton ISD there are currently 5,415 students residing in 21,190 multi-family units
- The district average multi-family yield is 0.255





Newcomer and Leaver Analysis

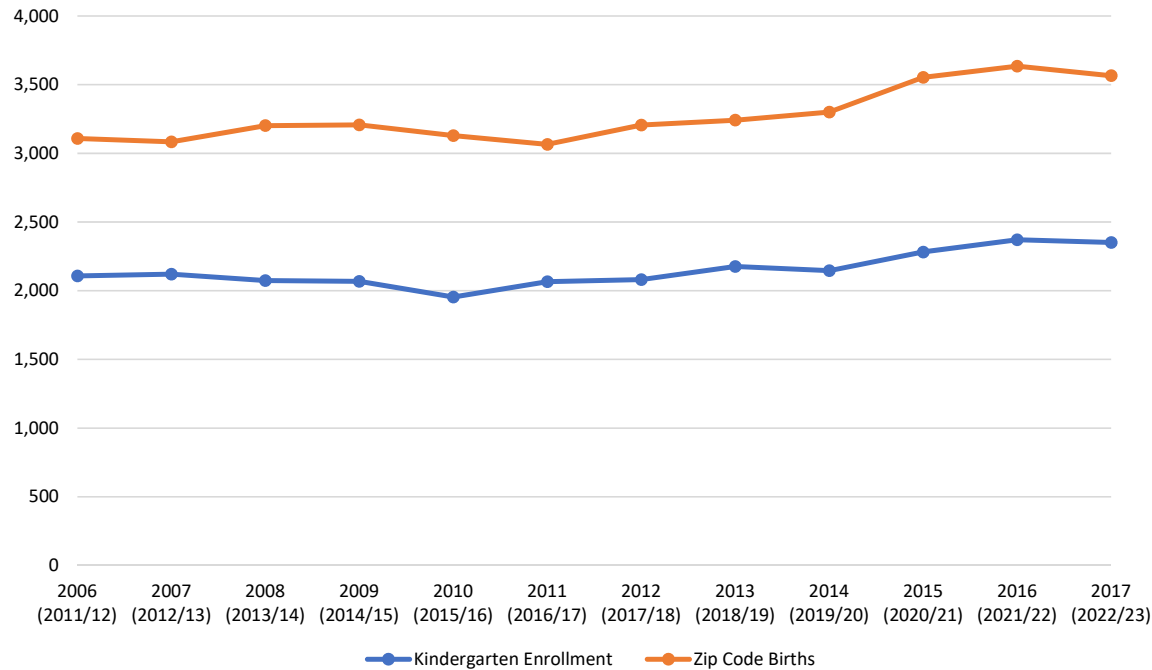
Denton ISD Newcomers and Leavers





Birth Rate Analysis

Denton ISD KG Enrollment vs. District Births



	Kindergarten Enrollment	District Births	Ratio
2006 (2011/12)	2,108	3,109	0.678
2007 (2012/13)	2,121	3,084	0.688
2008 (2013/14)	2,074	3,202	0.648
2009 (2014/15)	2,068	3,208	0.645
2010 (2015/16)	1,954	3,130	0.624
2011 (2016/17)	2,066	3,066	0.674
2012 (2017/18)	2,081	3,207	0.649
2013 (2018/19)	2,177	3,242	0.671
2014 (2019/20)	2,146	3,301	0.650
2015 (2020/21)	2,282	3,554	0.642
2016 (2021/22)	2,371	3,635	0.652
2017 (2022/23)	2,351	3,566	0.659





Ten Year Forecast by Grade Level

Year (Oct.)	EE	PK	K	1st	2nd	3rd	4th	5th	6th	7th	8th	9th	10th	11th	12th	Total	Total Growth	% Growth
2015/16	114	1,029	1,954	2,143	2,088	2,190	2,152	2,115	2,154	2,128	2,094	2,091	1,985	1,756	1,566	27,559		
2016/17	114	1,016	2,066	2,044	2,194	2,181	2,231	2,219	2,160	2,202	2,175	2,293	2,084	1,967	1,685	28,631	1,072	3.9%
2017/18	98	1,048	2,081	2,100	2,119	2,230	2,251	2,300	2,264	2,232	2,205	2,346	2,245	2,018	1,887	29,424	793	2.8%
2018/19	78	1,082	2,177	2,117	2,182	2,136	2,274	2,303	2,335	2,328	2,312	2,371	2,313	2,173	1,988	30,169	745	2.5%
2019/20	62	1,111	2,146	2,252	2,129	2,212	2,169	2,322	2,332	2,410	2,407	2,547	2,402	2,216	2,113	30,830	661	2.2%
2020/21	62	1,111	2,282	2,200	2,300	2,162	2,273	2,215	2,364	2,404	2,491	2,617	2,541	2,300	2,168	31,490	660	2.1%
2021/22	62	1,111	2,371	2,332	2,269	2,346	2,229	2,341	2,258	2,437	2,477	2,717	2,612	2,430	2,251	32,243	753	2.4%
2022/23	62	1,111	2,351	2,431	2,410	2,300	2,417	2,298	2,385	2,327	2,522	2,708	2,710	2,504	2,385	32,921	678	2.1%
2023/24	62	1,111	2,451	2,399	2,510	2,459	2,376	2,499	2,346	2,462	2,400	2,738	2,691	2,600	2,452	33,556	635	1.9%
2024/25	62	1,111	2,523	2,506	2,469	2,573	2,537	2,453	2,542	2,422	2,549	2,600	2,725	2,577	2,544	34,193	637	1.9%
2025/26	62	1,111	2,594	2,565	2,564	2,533	2,643	2,612	2,503	2,621	2,506	2,767	2,591	2,615	2,525	34,812	619	1.8%
2026/27	62	1,111	2,619	2,656	2,646	2,631	2,601	2,721	2,660	2,583	2,702	2,725	2,759	2,484	2,560	35,520	708	2.0%
2027/28	62	1,111	2,684	2,681	2,703	2,700	2,721	2,665	2,773	2,742	2,668	2,924	2,722	2,646	2,433	36,235	715	2.0%
2028/29	62	1,111	2,651	2,752	2,778	2,782	2,793	2,808	2,711	2,852	2,825	2,895	2,918	2,611	2,592	37,141	906	2.5%
2029/30	62	1,111	2,654	2,706	2,834	2,844	2,884	2,879	2,860	2,789	2,942	3,064	2,903	2,798	2,555	37,885	744	2.0%

Yellow box = largest grade per year
 Green box = second largest grade per year





High School Zone Overview

Braswell HS Zone

1,379 annual starts
 1,264 annual closings
 3,616 VDL
 8,184 futures

Denton HS Zone

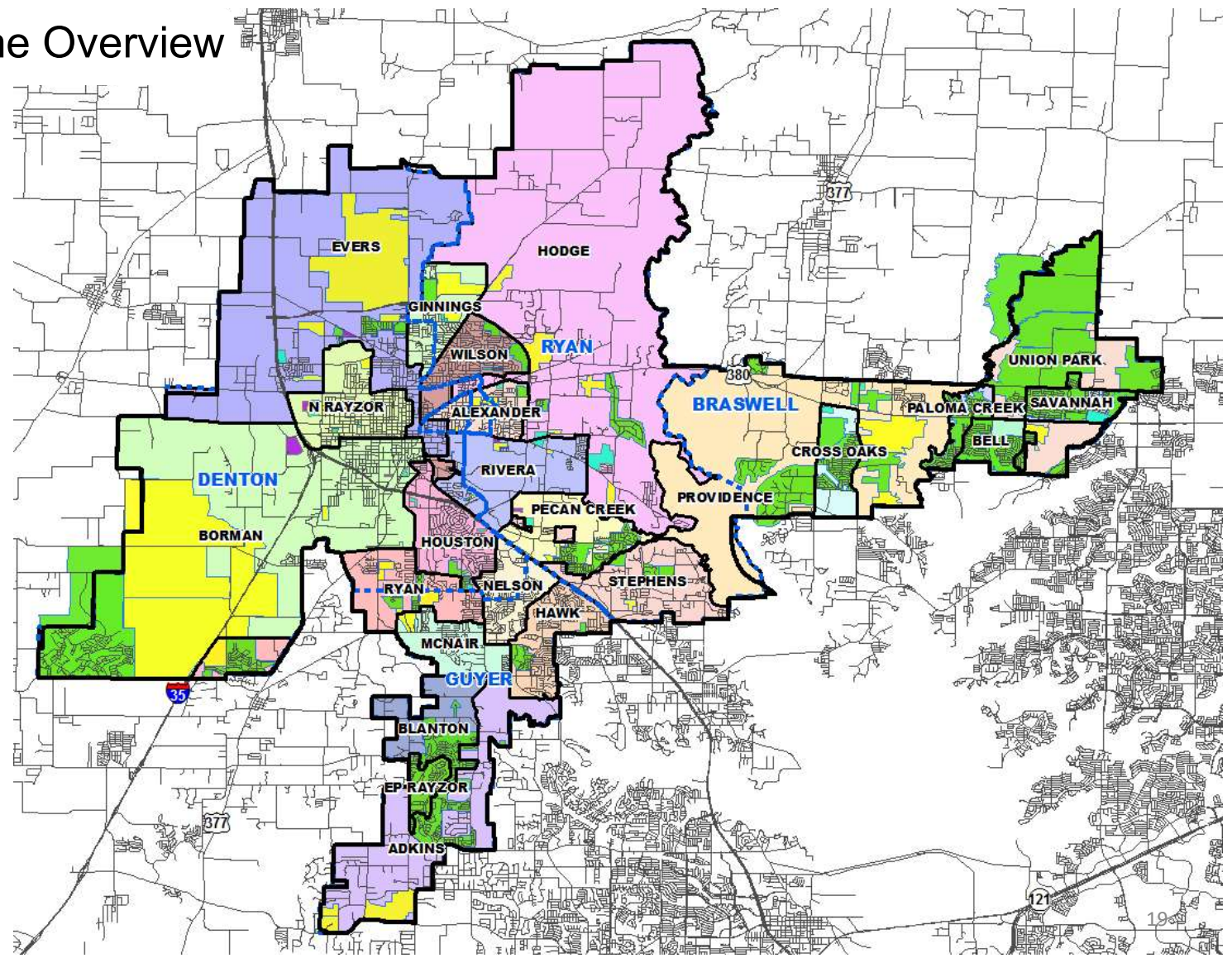
464 annual starts
 392 annual closings
 639 VDL
 22,298 futures

Guyer HS Zone

308 annual starts
 302 annual closings
 241 VDL
 348 futures

Ryan HS Zone

327 annual starts
 371 annual closings
 570 VDL
 3,756 futures





Ten Year Forecast by Braswell Feeder

Campus	Capacity	ENROLLMENT PROJECTIONS											
		2018/19	Fall 2019/20	2020/21	2021/22	2022/23	2023/24	2024/25	2025/26	2026/27	2027/28	2028/29	2029/30
Bell Elementary School	740	817	678	661	696	708	720	728	714	711	716	723	719
Cross Oaks Elementary School	740	708	673	689	712	738	757	780	785	797	788	775	769
Paloma Creek Elementary School	740	807	676	698	709	705	704	709	704	695	699	706	705
Providence Elementary School	740	447	555	576	631	685	732	797	850	903	939	991	1,027
Savannah Elementary School	740	731	704	695	700	697	690	695	704	702	715	728	733
Union Park Elementary School	740	0	464	677	896	1,103	1,283	1,450	1,597	1,748	1,874	2,047	2,176
ELEMENTARY TOTALS	4,440	3,510	3,750	3,996	4,344	4,636	4,886	5,159	5,354	5,556	5,731	5,970	6,129
Elementary Absolute Change		191	240	246	348	292	250	273	195	202	175	239	159
Elementary Percent Change		5.75%	6.84%	6.56%	8.71%	6.72%	5.39%	5.59%	3.78%	3.77%	3.15%	4.17%	2.66%
Navo Middle School	1,181	985	991	1,037	1,044	1,073	1,094	1,180	1,255	1,350	1,414	1,421	1,445
Rodriguez Middle School	1,323	825	899	1,015	1,040	1,105	1,168	1,235	1,335	1,423	1,554	1,595	1,652
MIDDLE SCHOOL TOTALS	2,504	1,810	1,890	2,052	2,084	2,178	2,262	2,415	2,590	2,773	2,968	3,016	3,097
Middle School Absolute Change		212	80	162	32	94	84	153	175	183	195	48	81
Middle School Percent Change		13.27%	4.42%	8.57%	1.56%	4.51%	3.86%	6.76%	7.25%	7.07%	7.03%	1.62%	2.69%
Braswell High School	2,398	2,007	2,341	2,517	2,813	3,005	3,144	3,263	3,351	3,492	3,621	3,896	4,145
HIGH SCHOOL TOTALS	2,398	2,007	2,341	2,517	2,813	3,005	3,144	3,263	3,351	3,492	3,621	3,896	4,145
High School Absolute Change		251	334	176	296	192	139	119	88	141	129	275	249
High School Percent Change		14.29%	16.64%	7.52%	11.76%	6.83%	4.63%	3.78%	2.70%	4.21%	3.69%	7.59%	6.39%
Braswell Feeder TOTALS	9,342	7,327	7,981	8,565	9,241	9,819	10,292	10,837	11,295	11,821	12,320	12,882	13,371
Braswell Feeder Absolute Change		654	654	584	676	578	473	545	458	526	499	562	489
Braswell Feeder Percent Change		9.8%	8.9%	7.3%	7.9%	6.3%	4.8%	5.3%	4.2%	4.7%	4.2%	4.6%	3.8%

Yellow box = over capacity





Ten Year Forecast by Ryan Feeder

Campus	Capacity	Fall		ENROLLMENT PROJECTIONS									
		2018/19	2019/20	2020/21	2021/22	2022/23	2023/24	2024/25	2025/26	2026/27	2027/28	2028/29	2029/30
Alexander Elementary School	740	580	595	597	626	621	649	656	663	665	663	655	656
Ginnings Elementary School	740	570	557	568	587	612	645	683	717	740	749	759	756
Hodge Elementary School	740	637	689	717	773	856	947	1,000	1,049	1,071	1,077	1,101	1,094
Olive Stephens Elementary School	740	410	386	365	367	379	406	424	441	445	446	453	451
Pecan Creek Elementary School	740	673	676	666	689	666	666	629	629	632	633	635	636
Rivera Elementary School	740	630	569	540	535	532	527	530	552	575	584	596	611
Wilson Elementary School	740	624	617	606	608	596	576	570	567	575	580	582	591
ELEMENTARY TOTALS	5,180	4,124	4,089	4,059	4,185	4,262	4,416	4,492	4,618	4,703	4,732	4,781	4,795
Elementary Absolute Change		-24	-35	-30	126	77	154	76	126	85	29	49	14
Elementary Percent Change		-0.58%	-0.85%	-0.73%	3.10%	1.84%	3.61%	1.72%	2.80%	1.84%	0.62%	1.04%	0.29%
Strickland Middle School	1,334	909	940	944	937	950	964	1,024	1,068	1,105	1,154	1,189	1,236
Bette Myers Middle School	1,323	858	907	922	872	842	808	830	808	816	813	843	858
MIDDLE SCHOOL TOTALS	2,657	1,767	1,847	1,866	1,809	1,792	1,772	1,854	1,876	1,921	1,967	2,032	2,094
Middle School Absolute Change		113	80	19	-57	-17	-20	82	22	45	46	65	62
Middle School Percent Change		6.83%	4.53%	1.03%	-3.05%	-0.94%	-1.12%	4.63%	1.19%	2.40%	2.39%	3.30%	3.05%
Ryan High School	2,340	2,068	2,155	2,269	2,365	2,439	2,519	2,468	2,428	2,425	2,448	2,491	2,548
HIGH SCHOOL TOTALS	2,340	2,068	2,155	2,269	2,365	2,439	2,519	2,468	2,428	2,425	2,448	2,491	2,548
High School Absolute Change		20	87	114	96	74	80	-51	-40	-3	23	43	57
High School Percent Change		0.98%	4.21%	5.29%	4.23%	3.13%	3.28%	-2.02%	-1.62%	-0.12%	0.95%	1.76%	2.29%
Ryan Feeder TOTALS	10,177	7,959	8,091	8,194	8,359	8,493	8,707	8,814	8,922	9,049	9,147	9,304	9,437
Ryan Feeder Absolute Change		109	132	103	165	134	214	107	108	127	98	157	133
Ryan Feeder Percent Change		1.4%	1.7%	1.3%	2.0%	1.6%	2.5%	1.2%	1.2%	1.4%	1.1%	1.7%	1.4%

Green box = within 5% of capacity
 Yellow box = over capacity





Ten Year Forecast by John Guyer Feeder

Campus	Capacity	2018/19	Fall	ENROLLMENT PROJECTIONS									
			2019/20	2020/21	2021/22	2022/23	2023/24	2024/25	2025/26	2026/27	2027/28	2028/29	2029/30
Alexander Elementary School	740	580	595	597	626	621	649	656	663	665	663	655	656
Adkins Elementary School	740	412	471	490	501	498	499	514	504	493	483	477	471
Blanton Elementary School	740	490	474	490	491	506	508	514	518	513	512	514	507
Borman Elementary School	740	439	436	446	447	444	450	462	491	528	562	598	639
E P Rayzor Elementary School	740	385	357	335	326	328	322	314	324	327	327	334	334
Evers Park Elementary School	740	590	589	600	609	636	668	688	735	764	798	824	844
Hodge Elementary School	740	637	689	717	773	856	947	1,000	1,049	1,071	1,077	1,101	1,094
Nelson Elementary School	740	660	597	589	571	548	567	545	559	558	563	569	570
McNair Elementary School	740	551	564	523	517	474	469	474	493	523	535	549	557
Hawk Elementary School	740	649	672	653	659	647	669	660	653	655	655	661	660
Newton Rayzor Elementary School	740	644	664	656	647	646	648	643	643	639	644	652	652
Ryan Elementary School	740	643	545	582	592	590	607	614	626	619	609	624	624
Wilson Elementary School	740	624	617	606	608	596	576	570	567	575	580	582	591
ELEMENTARY TOTALS	9,620	7,304	7,270	7,284	7,367	7,390	7,579	7,654	7,825	7,930	8,008	8,140	8,199
Elementary Absolute Change		35	-34	14	83	23	189	75	171	105	78	132	59
Elementary Percent Change		0.48%	-0.47%	0.19%	1.14%	0.31%	2.56%	0.99%	2.23%	1.34%	0.98%	1.65%	0.72%
Calhoun Middle School	1,268	736	723	703	702	730	721	766	758	794	789	830	850
Crownover Middle School	1,181	957	914	902	840	872	802	836	786	820	791	800	813
Harpool Middle School	1,181	913	931	899	886	839	812	789	787	792	820	822	825
MIDDLE SCHOOL TOTALS	3,630	2,606	2,568	2,504	2,428	2,441	2,335	2,391	2,331	2,406	2,400	2,452	2,488
Middle School Absolute Change		-40	-38	-64	-76	13	-106	56	-60	75	-6	52	36
Middle School Percent Change		-1.51%	-1.46%	-2.49%	-3.04%	0.54%	-4.34%	2.40%	-2.51%	3.22%	-0.25%	2.17%	1.47%
John Guyer High School	3,200	2,589	2,621	2,643	2,656	2,579	2,560	2,464	2,421	2,345	2,314	2,288	2,261
HIGH SCHOOL TOTALS	3,200	2,589	2,621	2,643	2,656	2,579	2,560	2,464	2,421	2,345	2,314	2,288	2,261
High School Absolute Change		65	32	22	13	-77	-19	-96	-43	-76	-31	-26	-27
High School Percent Change		2.58%	1.24%	0.84%	0.49%	-2.90%	-0.74%	-3.75%	-1.75%	-3.14%	-1.32%	-1.12%	-1.18%
John Guyer Feeder TOTALS	16,450	12,499	12,459	12,431	12,451	12,410	12,474	12,509	12,577	12,681	12,722	12,880	12,948
John Guyer Feeder Absolute Change		60	-40	-28	20	-41	64	35	68	104	41	158	68
John Guyer Feeder Percent Change		0.5%	-0.3%	-0.2%	0.2%	-0.3%	0.5%	0.3%	0.5%	0.8%	0.3%	1.2%	0.5%

Yellow box = over capacity





Ten Year Forecast by Denton Feeder

Campus	Capacity	2018/19	Fall	ENROLLMENT PROJECTIONS									
			2019/20	2020/21	2021/22	2022/23	2023/24	2024/25	2025/26	2026/27	2027/28	2028/29	2029/30
Alexander Elementary School	740	580	595	597	626	621	649	656	663	665	663	655	656
Borman Elementary School	740	439	436	446	447	444	450	462	491	528	562	598	639
Evers Park Elementary School	740	590	589	600	609	636	668	688	735	764	798	824	844
Ginnings Elementary School	740	570	557	568	587	612	645	683	717	740	749	759	756
Hodge Elementary School	740	637	689	717	773	856	947	1,000	1,049	1,071	1,077	1,101	1,094
Sam Houston Elementary School	740	582	595	586	572	565	558	555	566	569	576	584	592
Nelson Elementary School	740	660	597	589	571	548	567	545	559	558	563	569	570
Newton Rayzor Elementary School	740	644	664	656	647	646	648	643	643	639	644	652	652
Rivera Elementary School	740	630	569	540	535	532	527	530	552	575	584	596	611
Ryan Elementary School	740	643	545	582	592	590	607	614	626	619	609	624	624
Wilson Elementary School	740	624	617	606	608	596	576	570	567	575	580	582	591
ELEMENTARY TOTALS	8,140	6,599	6,453	6,487	6,567	6,646	6,842	6,946	7,168	7,303	7,405	7,544	7,629
Elementary Absolute Change		44	-146	34	80	79	196	104	222	135	102	139	85
Elementary Percent Change		0.67%	-2.21%	0.53%	1.23%	1.20%	2.95%	1.52%	3.20%	1.88%	1.40%	1.88%	1.13%
Calhoun Middle School	1,268	736	723	703	702	730	721	766	758	794	789	830	850
McMath Middle School	1,181	769	824	817	831	803	819	833	813	825	828	868	892
Strickland Middle School	1,334	909	940	944	937	950	964	1,024	1,068	1,105	1,154	1,189	1,236
MIDDLE SCHOOL TOTALS	3,783	2,414	2,487	2,464	2,470	2,483	2,504	2,623	2,639	2,724	2,771	2,887	2,978
Middle School Absolute Change		23	73	-23	6	13	21	119	16	85	47	116	91
Middle School Percent Change		0.96%	3.02%	-0.92%	0.24%	0.53%	0.85%	4.75%	0.61%	3.22%	1.73%	4.19%	3.15%
Denton High School	2,460	2,005	2,023	2,059	2,038	2,146	2,120	2,113	2,160	2,128	2,204	2,203	2,228
HIGH SCHOOL TOTALS	2,460	2,005	2,023	2,059	2,038	2,146	2,120	2,113	2,160	2,128	2,204	2,203	2,228
High School Absolute Change		-25	18	36	-21	108	-26	-7	47	-32	76	-1	25
High School Percent Change		-1.23%	0.90%	1.78%	-1.02%	5.30%	-1.21%	-0.33%	2.22%	-1.48%	3.57%	-0.05%	1.13%
Denton Feeder TOTALS	14,383	11,018	10,963	11,010	11,075	11,275	11,466	11,682	11,967	12,155	12,380	12,634	12,835
Denton Feeder Absolute Change		42	-55	47	65	200	191	216	285	188	225	254	201
Denton Feeder Percent Change		0.4%	-0.5%	0.4%	0.6%	1.8%	1.7%	1.9%	2.4%	1.6%	1.9%	2.1%	1.6%

Yellow box = over capacity





Ten Year Forecast by Alternate Schools

Campus	Capacity	Fall		ENROLLMENT PROJECTIONS									
		2018/19	2019/20	2020/21	2021/22	2022/23	2023/24	2024/25	2025/26	2026/27	2027/28	2028/29	2029/30
Denton J J A E P		3	2	2	2	2	2	2	2	2	2	2	2
Juvenile Detention CTR		77	50	50	50	50	50	50	50	50	50	50	50
Lester Davis School		45	43	43	43	43	43	43	43	43	43	43	43
ALTERNATIVE SCHOOL TOTALS		125	95	95	95	95	95	95	95	95	95	95	95
DISTRICT TOTALS	39,610	30,169	30,830	31,490	32,243	32,921	33,556	34,193	34,812	35,520	36,235	37,141	37,885
District Absolute Change		745	661	660	753	678	635	637	619	708	715	906	744
District Percent Change		2.5%	2.2%	2.1%	2.4%	2.1%	1.9%	1.9%	1.8%	2.0%	2.0%	2.5%	2.0%

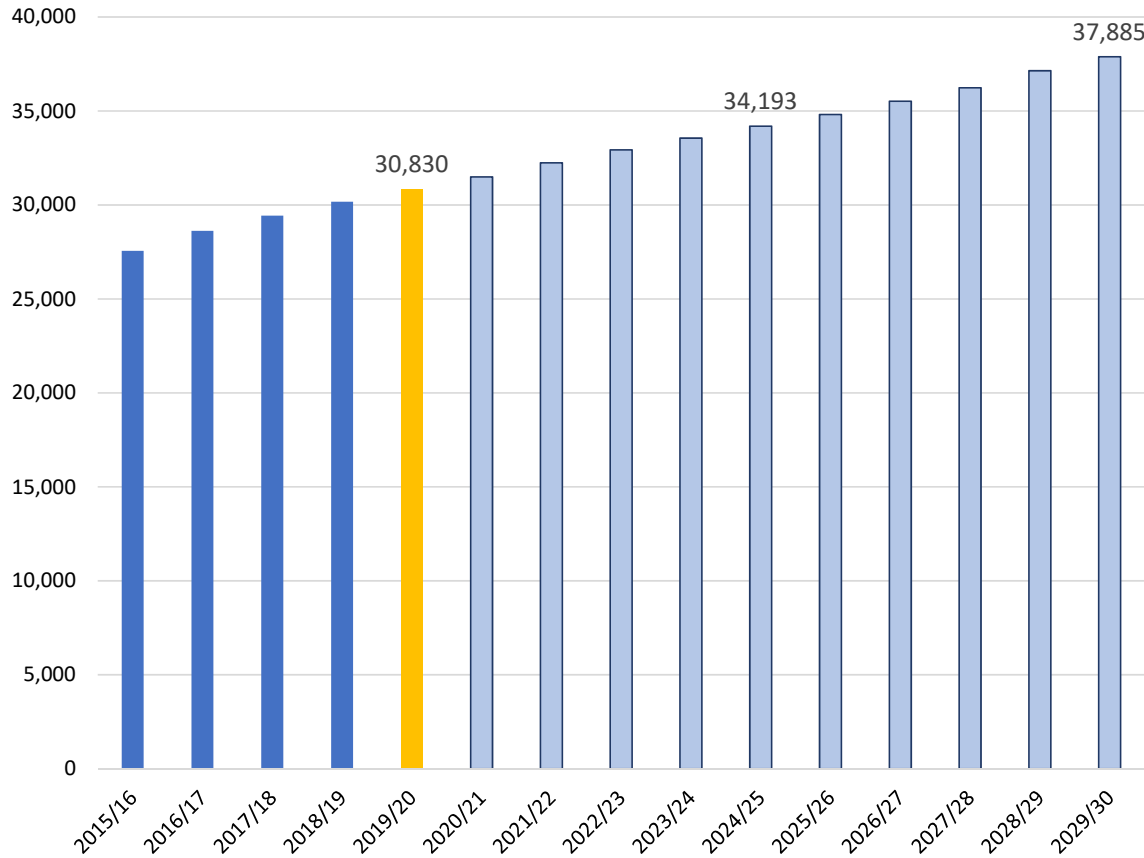
Yellow box = over capacity



Key Takeaways



Projected Enrollment



- Denton ISD will continue to experience enrollment growth due to a strong housing market and collegiate network
- Union Park Elementary zones could see more than 4,000 additional residential units in the next 5 years
- DISD saw a 220 student increase in newcomers in 2019-2020
- The district is forecasted to add 2,250 to 2,500 single family homes a year for the next 5 years
- Denton ISD is expected to enroll nearly 34,200 students by 2024-25 and more than 37,800 students by 2029-30