

2025 Legislative Updates

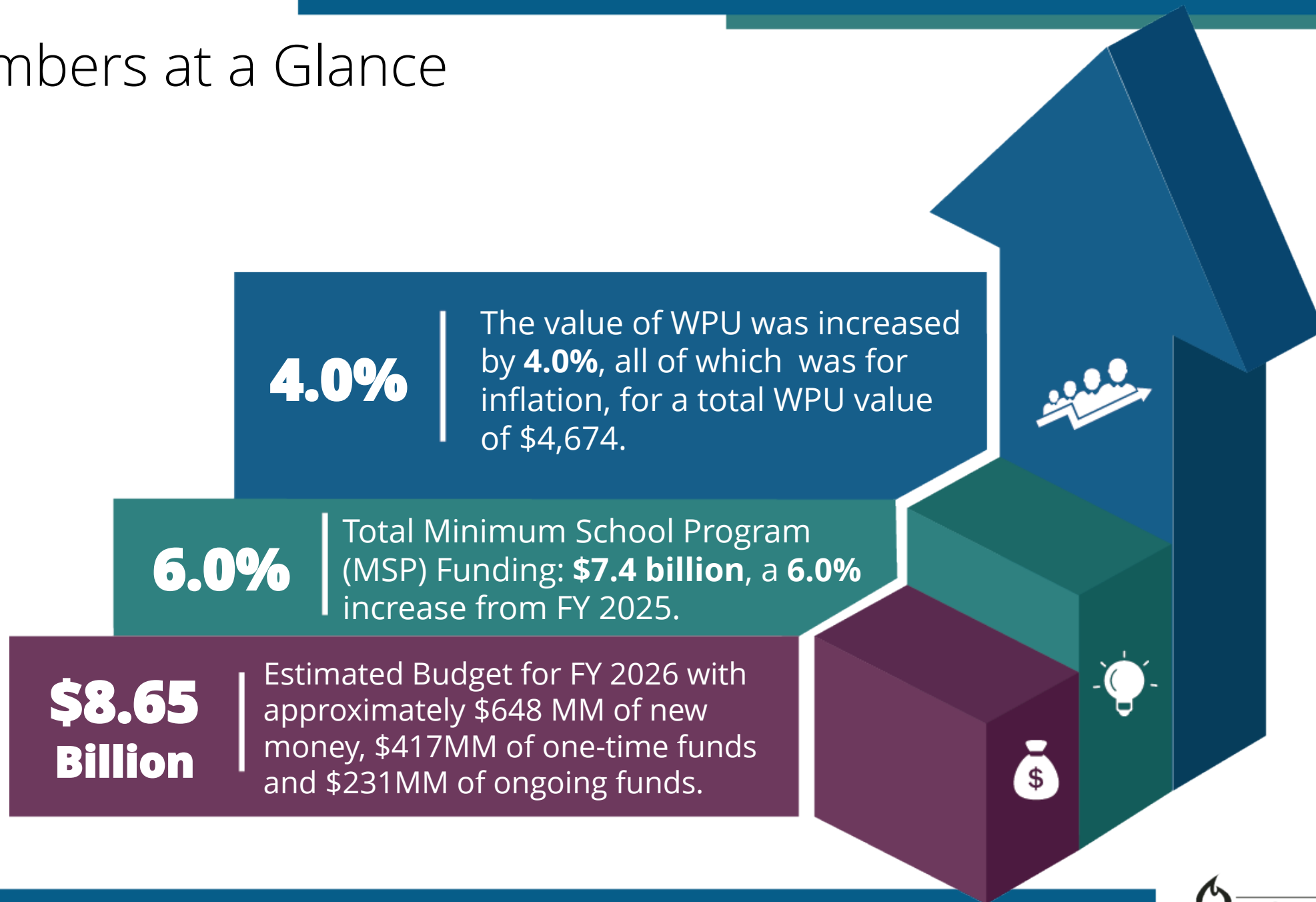
Utah State Board of Education | Legislative Session Updates
As of March 24, 2025



**Utah State
Board of
Education**



Numbers at a Glance



Notable Education Stabilization Funding Distribution



\$16.4 Million

NESS/Small Schools
On-Going



\$25 Million

School Safety Needs Support Grant
One-Time



\$65 Million

Catalyst Center Grants
One-Time



\$77 Million

Teacher Professional Hours
One-Time

Notable Funding

Educator Support

Educator Support
Professional Stipends
\$4.8 Million
One-Time

Educator Salary
Adjustment
\$10,350
One-Time

Stipends for Future
Educators
\$12.4 Million
One-Time

Rural Student Support

Rural Schools Athletic
Facilities Grant
\$4.39 Million
One-Time

Necessarily Existent Small
Schools Increase
\$16.3 Million
Ongoing

Small School Capital
Projections
\$12.5 Million
One-Time

Notable Funding

Technology

Writing Instruction and AI
Plagiarism Solution

\$900,000

One-Time

K-12 Computer Science
Initiative

\$2 Million

One-Time

Additional Funding

Grow Your Own Teacher &
Counselor Program

7.3 Million

One-Time

Utah Fits All
Program

\$40 Million

Ongoing

Food Security
Amendments

\$2.5 Million

One-Time

Student Information
Systems

\$10 Million

One-Time



Minimum School Program

A. Basic School Program			
Program	FY25 Appropriation	FY26 Appropriation	Growth
Kindergarten	\$168,900,646	\$194,453,900	15%
Grades 1-12	\$2,732,253,300	\$2,825,895,900	3%
Foreign Exchange Students	\$1,627,500	\$2,009,700	23%
Necessarily Existent Small Schools	\$48,910,500	\$67,151,800	37%
Enrollment Growth Contingency	\$19,101,000	\$19,101,000	0%
Mid and Final Year Distribution Balance	\$45,000,000	\$50,000,000	N/A
Professional Staff	\$258,211,900	0	-100%
Total Basic School Program	\$3,274,004,846	\$3,158,612,300	-4%

Minimum School Program

B. Restricted School Program			
Program	FY25 Appropriation	FY26 Appropriation	Growth
Special Education - Regular - Add-on	\$455,467,000	\$467,687,300	3%
Special Education - Regular - Self-Contained	\$52,076,600	\$54,643,800	5%
Special Education - Pre-School	\$50,809,200	\$52,227,300	3%
Special Education - Extended Year	\$2,053,800	\$2,112,600	3%
Special Education - Impact Aid	\$9,257,600	\$6,074,400	-34%
Extended Year for Special Educators	\$4,085,200	\$4,248,900	4%
Students At-Risk - Add-on	\$129,845,500	\$130,501,400	1%
CTE Add-on	\$130,716,900	\$130,155,200	0%
Class Size Reduction	\$190,352,500	\$195,658,500	3%
Total Basic School Program	\$1,024,664,300	\$1,043,309,400	2%

Minimum School Program

C. Voted and Board Local Levy Programs

Program	FY25 Appropriation	FY26 Appropriation	Growth
Board Local Levy	\$473,923,900	\$511,057,100	8%
Voted Local Levy	\$731,045,500	\$761,947,600	4%
Total Voted and Board	\$1,204,969,400	\$1,273,004,700	6%

Minimum School Program

MSP Basic School Programs Changes:

- \$178.6 million Ongoing Increase: **WPU value \$4,674**
- \$100.1 million Ongoing Enrollment Growth
- \$16,322,300 ongoing increase to implement the provisions of HB396 Small School District Scale of Operations Formula.
- \$269,269,300 ongoing program reduction for reallocation: Professional Staff
- \$4,208,200 ongoing program reduction: Career & Technical Education District Add-On (CTE Student Organization and Career Awareness)
- \$3,441,700 ongoing program reduction: Special Education Impact Aid

Minimum School Program

MSP Related to Basic School Programs

Changes to this section include the following:

- \$7,327,000 one-time to continue Grow your Own Teacher and Counselor Pipeline program.
- \$269,269,200 ongoing reallocation from Professional Staff to Flexible Allocation.
- \$(4,205,000) ongoing reduction from Flexible Allocation.
- \$(3,935,000) ongoing reduction for reallocation: Grants for Professional Learning.
- \$3,600,000 one-time increase to Charter School Funding Base Program.
- \$(1,500,000) ongoing reduction for reallocation from Digital Teaching and Learning.
- \$600,000 one-time funding to implement the provisions of SB099 Excellence in Education and Leadership Supplement Amendments.
- \$(2,000,000) ongoing reduction for relocation from Student Health and Counseling program.

Education Bills by the Numbers



238

Bills Introduced

136

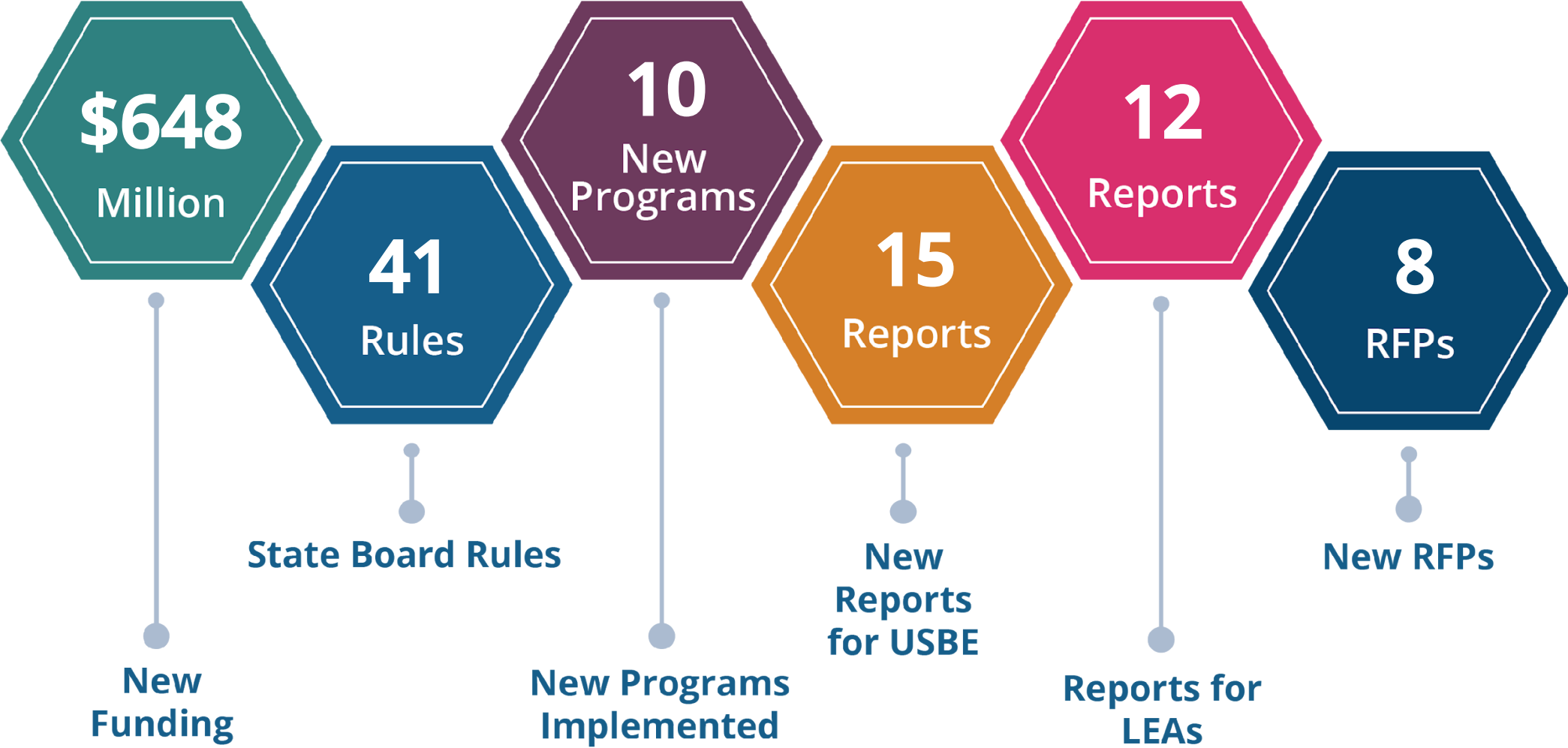
Bills Passed

57%

Bill Passage
Rate

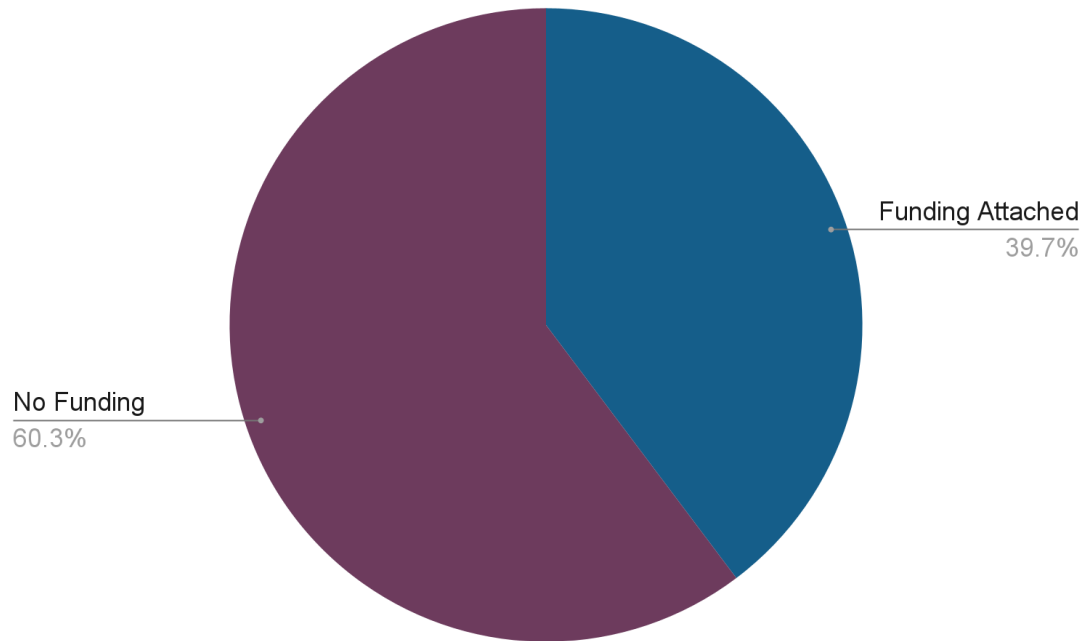
80 Total bills featured in
the Bill Book

2025 Numbers at a Glance



Numbers at a Glance

New or Amended LEA Requirements



New or Amended USBE Requirements

