



District 1 Metro Update



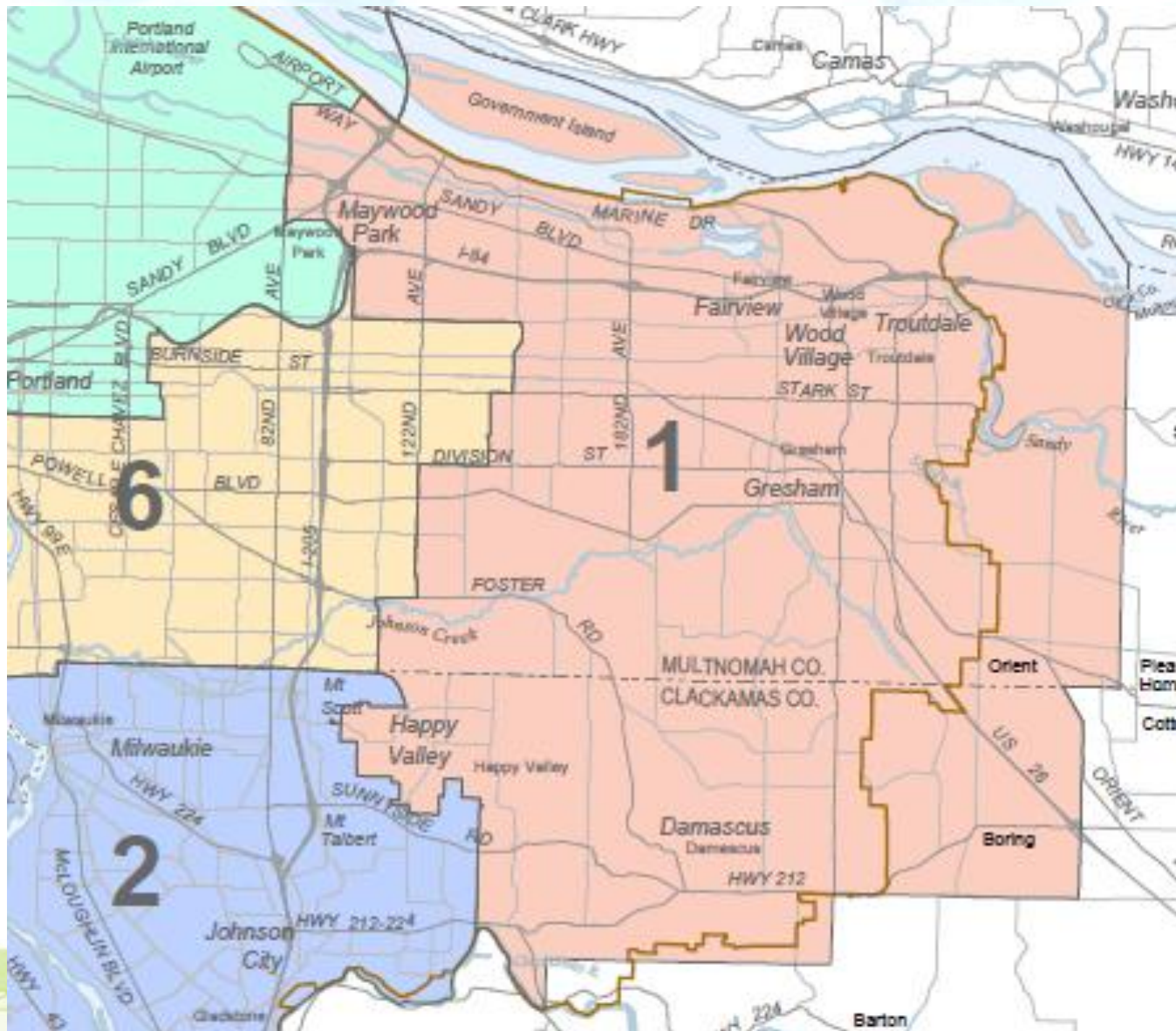
Parkrose School District

June 27, 2011

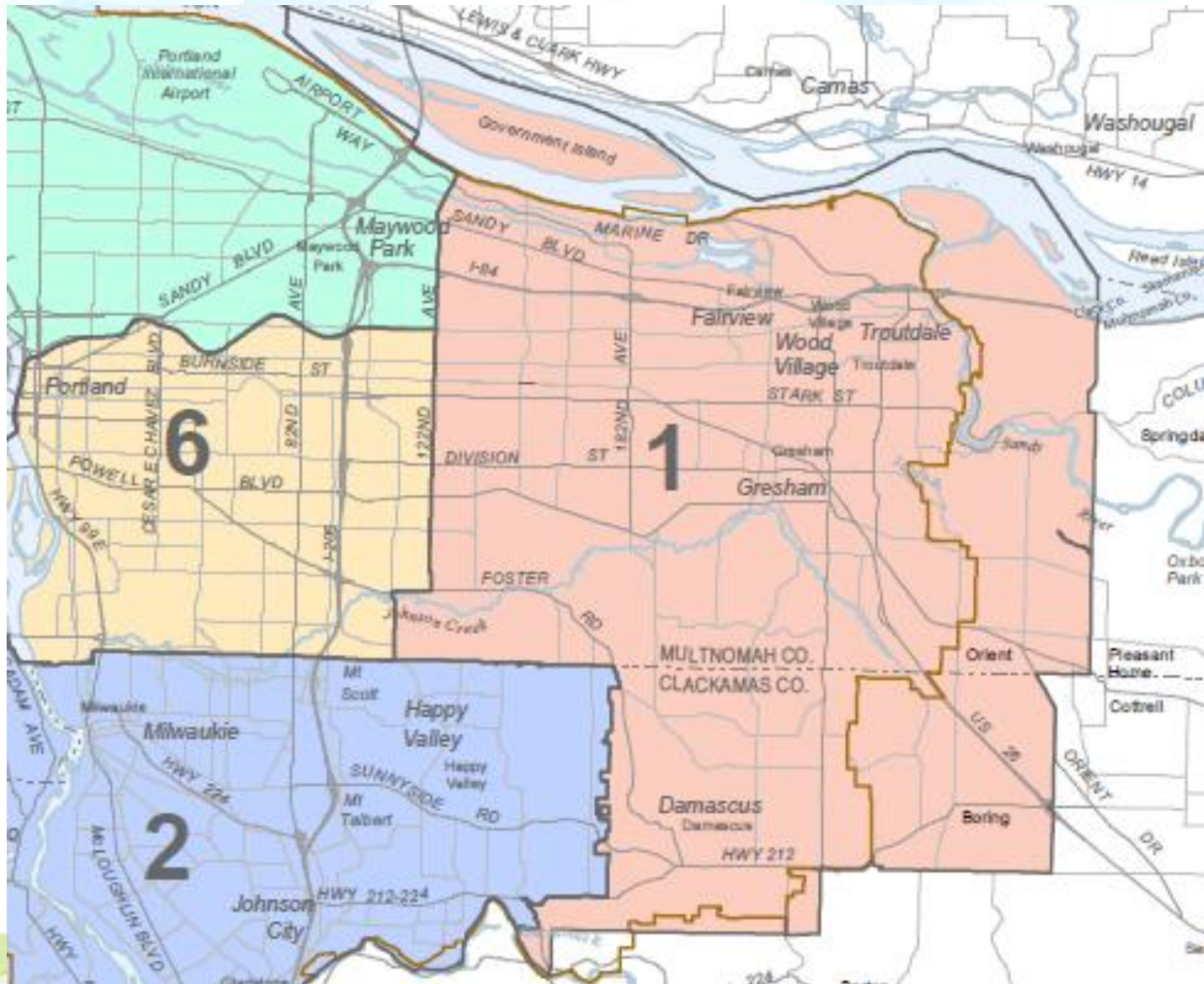


Councilor Shirley Craddick

Current District 1



New District 1



My goals as your Metro Councilor



- Work with local leaders to address needs of District 1 communities at regional table



- Work with businesses to create more economic opportunities in eastern part of the region



- Develop a set of common goals

Metro updates

- Barbara Roberts appointed as Councilor for District 6
- Michael Jordan departed to become state's COO
- Dan Cooper is acting Metro COO
- Redistricting process completed; new map takes effect January 2013

Rex Burkholder
District 5



Kathryn Harrington
District 4



Barbara Roberts
District 6



Shirley Craddick
District 1



Carl Hosticka
District 3



Carlotta Collette
District 2



Tom Hughes
Council President



Metro Responsibilities

- Land use and transportation planning
- Visitor Venues
 - Oregon Zoo
 - Portland Center for Performing Arts
 - Oregon Convention Center
 - Exposition Center
- Cemeteries
- Natural Areas
- Solid waste planning
- Metro Council projects



Oregon Zoo update

- Master plan will be completed by September ; Oregon Zoo bond advisory group overseeing process
- “Conservation Discovery Zone” being constructed with bond funds; will be central campus for all of Metro’s conservation education activities



Glendoveer Update

- Master plan updates underway
- Council will recommend investment strategy in July
- Goals include increasing efficiency, sustainability, and profit for the operation



2011 Metro Council Projects



- Urban and Rural Reserves and Growth Management decision
- Community Investment Strategy
 - Intertwine
 - Corridor development: SW Corridor and East Metro Connections
 - Downtowns and Main street development
 - Climate Smart Communities
 - Community Investment Initiative
 - Large lot industrial inventory

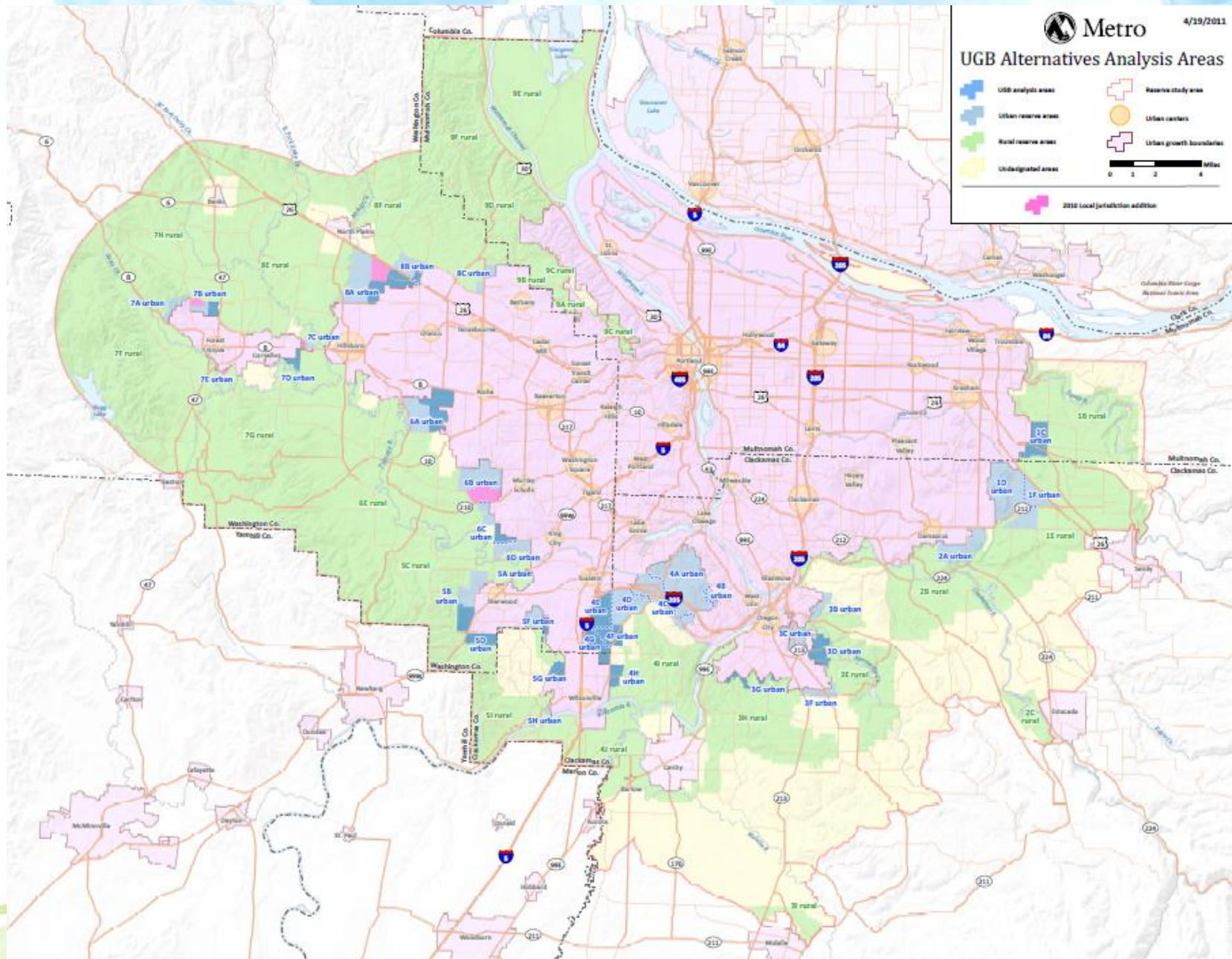
Reserves: what's next

- Metro Council adopted ordinance establishing urban and rural reserves map for Washington County on April 21
- LCDC to review revised map in August
- Possible UGB decision by end of year



www.oregonmetro.gov/reserves

Growth Management Decision



Community investment strategy

An integrated set of policies and investments supporting a long-term regional strategy to make the most of public resources, provide good jobs, protect forest a farm land, and help the region meet its desired outcomes and be a great place to live.

Initiatives that are part of the Community Investment Strategy:

- Intertwine
- Large-lot industrial land inventory
- Downtowns and Main street development
- Climate Smart Communities
- Corridor development: SW Corridor and East Metro Connections
- Community Investment Initiative



Climate smart communities

- House Bill 2001 mandated Metro to plan for reductions in transportation-related carbon emissions
- Climate Smart Communities program will study scenarios that meet stage targets and meet local and regional aspirations



Community Investment Initiative

- Public-private partnership of leaders
- “Think tank” charged with looking at strategies for economic growth
- Will present recommendations to Metro Council on how to target investments and stimulate economic growth



East Metro Connections

- Goal: develop strategies to ensure regional transportation investments support community and economic development, also mobility and land use goals
- Steering committee met April 22, next meeting is July 27
- Panels of experts will be convened this summer; topics will include school operations (safe routes to schools, transit options, etc.)



The Intertwine



- Network of parks, trails and natural areas in the Portland-Vancouver area
- Focus areas, or “Petals”:
 - **Land acquisition**
 - **Active transportation**
 - **Developing the regional parks system**
 - **Conservation education**
 - **Conservation**



Intertwine: Conservation Education



- Metro staff are working to serve needs of teachers in the region while integrating nature into curriculum

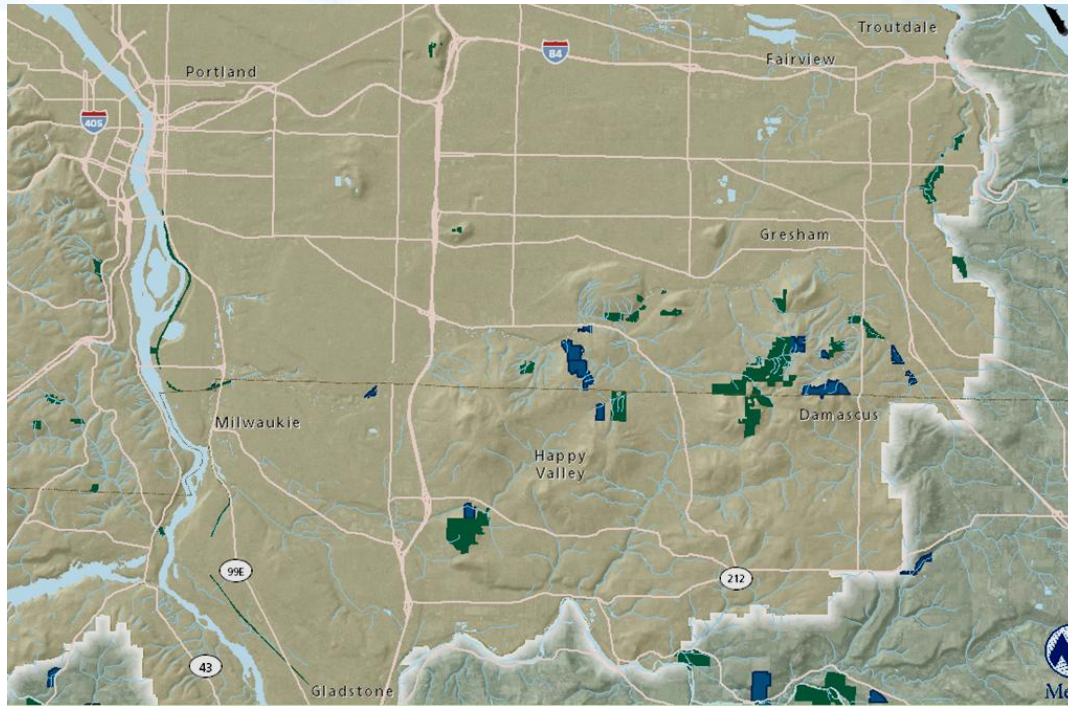


- Survey underway of teachers looking to integrate conservation education into curriculum



- Schools are invited to contact Metro to learn more about conservation education programming

Intertwine: Natural areas acquisitions



- 4,560 acres purchased east of the Willamette River
- Assets purchased in or near the Parkrose School district include
 - 20 acres on Wilkes Creek
 - Rocky Butte natural area
 - Land along Columbia slough

Other ways Metro connects with schools:

Waste Reduction Education Programming



- Elementary schools have received puppet shows and presentations on composting, natural gardening, and recycling



- Middle and high schools have had waste reduction-themed classroom presentations and assemblies



- Metro staff have worked with a Parkrose chemistry teacher to present on sustainability topics

Other ways Metro connects with schools:

Waste Reduction Education at Outdoor School

- Metro supports Outdoor School by providing funds for waste reduction education
- Reimbursement of \$57/student for one day of ODS
- Funds come from Metro solid waste surcharge; must be spent on waste reduction education



Other ways Metro connects with schools: Synergies Project



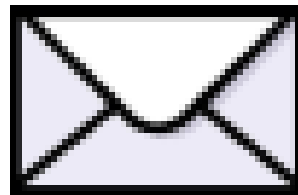
- Project goal: research how, when, where, and why people access science, technology, engineering, and math (STEM) education resources
- Use research to create a more synergistic, effective system for providing STEM education
- Engage 1,000 residents of Parkrose neighborhood in longitudinal study



PORTLAND-VANCOUVER AREA ONLINE PANEL

- Real-time demographic data at www.optinpanel.org
- Goal is to get 10,000 participants by fall, reflecting demographics of the region
- Two or three surveys per month
- Cash prizes awarded each month
- **Ask friends and neighbors to Opt In!**

Connect with Metro



www.oregonmetro.gov/connect

Your questions...

Shirley Craddick
Metro Councilor, District 1
600 NE Grand Avenue
Portland, OR 97232

503-797-1547
shirley.craddick@oregonmetro.gov

www.oregonmetro.gov/craddick