

Monthly ADA Comparison for 2010-2011, 2011-2012, and 2012-2013

School	Month 1								
	2010-2011			2011-2012			2012-2013		
	ENR.	ADA	ADA %	ENR.	ADA	ADA %	ENR.	ADA	ADA %
Carver	181	175.26	96.83%	300	296.30	98.76%	308	300.96	97.71%
Church	269	257.97	95.89%	NA	NA	NA	NA	NA	NA
Joyner	400	390.30	97.57%	394	385.69	97.88%	420	403.67	96.12%
Lawhon	446	434.64	97.45%	558	545.57	97.77%	545	534.10	98.01%
Lawndale	505	494.67	97.95%	463	451.07	97.42%	430	419.37	97.53%
Milam	540	525.01	97.22%	614	596.64	97.17%	602	584.54	97.10%
Parkway	460	450.33	97.90%	496	477.54	96.27%	483	464.92	96.26%
Pierce St.	444	432.14	97.32%	417	405.53	97.25%	401	387.16	96.55%
Rankin	433	425.43	98.25%	419	404.71	96.58%	394	383.80	97.42%
Thomas St.	430	420.12	97.70%	456	442.20	96.97%	430	415.09	96.53%
Tupelo Middle School	1084	1050.75	96.93%	1038	1012.21	97.51%	1127	1105.62	98.10%
Tupelo High School	2125	2023.14	95.21%	2142	2036.12	95.06%	2095	1954.57	93.30%
District Totals	7317	7079.76	96.76%	7297	7053.58	96.66%	7235	6953.80	96.11%

School	Month 2								
	2010-2011			2011-2012			2012-2013		
	ENR.	ADA	ADA %	ENR.	ADA	ADA %	ENR.	ADA	ADA %
Carver	178	172.10	96.69%	307	291.75	95.03%	311	299.45	96.29%
Church	265	259.60	97.96%	NA	NA	NA	NA	NA	NA
Joyner	400	386.45	96.61%	396	382.05	96.48%	421	406.29	96.51%
Lawhon	448	429.20	95.80%	559	540.85	96.75%	544	528.00	97.06%
Lawndale	502	486.90	96.99%	467	450.20	96.40%	432	418.61	96.91%
Milam	542	520.75	96.08%	620	597.65	96.40%	600	584.40	97.40%
Parkway	460	446.65	97.10%	486	471.15	96.94%	482	469.00	97.30%
Pierce St.	444	429.80	96.80%	410	400.55	97.70%	402	389.61	96.92%
Rankin	437	421.25	96.40%	418	407.85	97.57%	398	388.26	97.56%
Thomas St.	426	414.50	97.30%	459	442.85	96.48%	429	414.43	96.61%
Tupelo Middle School	1082	1040.00	96.12%	1038	1001.05	96.44%	1134	1081.03	95.33%
Tupelo High School	2130	2010.35	94.38%	2137	2007.15	93.92%	2092	1944.38	92.94%
District Totals	7314	7017.55	95.95%	7297	6993.10	95.84%	7245	6923.46	95.56%

School	Month 3								
	2010-2011			2011-2012			2012-2013		
	ENR.	ADA	ADA %	ENR.	ADA	ADA %	ENR.	ADA	ADA %
Carver	183	174.34	95.27%	302	291.71	96.59%	314	301.63	96.07%
Church	255	250.22	98.13%	NA	NA	NA	NA	NA	NA
Joyner	404	388.83	96.24%	400	384.34	96.09%	415	406.69	98.00%
Lawhon	445	431.22	96.91%	557	536.45	96.31%	548	529.56	96.64%
Lawndale	500	485.81	97.16%	472	454.98	96.40%	426	417.41	97.98%
Milam	542	519.63	95.88%	614	591.23	96.29%	600	585.22	97.54%
Parkway	457	441.76	96.67%	480	465.16	96.91%	477	462.35	96.93%
Pierce St.	441	428.55	97.19%	411	393.39	95.72%	398	385.10	96.76%
Rankin	436	419.91	96.32%	422	408.64	96.84%	399	388.12	97.27%
Thomas St.	420	406.71	96.83%	456	441.68	96.87%	431	417.18	96.79%
Tupelo Middle School	1080	1029.81	95.35%	1035	990.17	95.67%	1131	1085.12	95.94%
Tupelo High School	2125	1990.62	93.68%	2121	1977.64	93.24%	2079	1911.73	91.95%
District Totals	7288	6967.41	95.60%	7270	6935.39	95.40%	7218	6890.11	95.46%

Monthly ADA Comparison for 2010-2011, 2011-2012, and 2012-2013

School	Month 4								
	2010-2011			2011-2012			2012-2013		
	ENR.	ADA	ADA %	ENR.	ADA	ADA %	ENR.	ADA	ADA %
Carver	180	174.68	97.04%	303	291.25	96.12%	311	295.25	94.93%
Church	253	240.34	94.99%	NA	NA	NA	NA	NA	NA
Joyner	404	382.53	94.68%	398	385.18	96.78%	411	387.16	94.20%
Lawhon	440	425.76	96.76%	558	537.50	96.33%	546	521.14	95.45%
Lawndale	502	485.35	96.68%	471	453.82	96.36%	426	410.23	96.30%
Milam	545	512.51	94.04%	614	586.25	95.48%	596	567.46	95.21%
Parkway	455	433.10	95.18%	466	460.74	98.87%	474	457.46	96.51%
Pierce St.	439	421.18	95.94%	412	399.25	96.91%	391	380.09	97.21%
Rankin	436	415.52	95.30%	422	405.42	96.07%	395	382.76	96.90%
Thomas St.	418	393.76	94.20%	455	430.83	94.69%	426	405.67	95.23%
Tupelo Middle School	1080	1019.76	94.42%	1036	979.77	94.57%	1128	1072.85	95.11%
Tupelo High School	2102	1986.32	94.50%	2099	2003.27	95.44%	2031	1911.30	94.11%
District Totals	7254	6890.81	94.99%	7234	6933.28	95.84%	7135	6791.37	95.18%

School	Month 5								
	2010-2011			2011-2012			2012-2013		
	ENR.	ADA	ADA %	ENR.	ADA	ADA %	ENR.	ADA	ADA %
Carver	181	165.82	91.61%	299	285.70	95.55%	315	301.73	95.79%
Church	256	241.58	94.36%	NA	NA	NA	NA	NA	NA
Joyner	402	379.86	94.48%	396	380.65	96.12%	416	391.36	94.08%
Lawhon	444	419.34	94.44%	560	539.60	96.36%	553	522.64	94.51%
Lawndale	500	472.42	94.48%	462	450.85	97.59%	426	406.25	95.37%
Milam	542	509.45	93.99%	617	592.70	96.06%	603	571.04	94.70%
Parkway	462	423.58	91.68%	469	447.25	95.36%	474	447.73	94.46%
Pierce St.	441	420.19	95.28%	409	394.65	96.49%	387	370.68	95.78%
Rankin	433	409.60	94.59%	421	404.85	96.16%	405	380.81	94.02%
Thomas St.	434	406.67	93.69%	454	431.90	95.13%	416	400.05	96.17%
Tupelo Middle School	1080	1007.15	93.25%	1029	976.30	94.88%	1113	1051.62	94.49%
Tupelo High School	2101	1954.18	93.01%	2074	1933.95	93.25%	2022	1836.87	90.85%
District Totals	7276	6809.84	93.59%	7190	6838.40	95.11%	7130	6680.78	93.70%

School	Month 6								
	2010-2011			2011-2012			2012-2013		
	ENR.	ADA	ADA %	ENR.	ADA	ADA %	ENR.	ADA	ADA %
Carver	181	171.57	94.79%	305	289.35	94.87%	310	297.74	96.04%
Church	261	244.10	93.53%	NA	NA	NA	NA	NA	NA
Joyner	403	381.49	94.66%	395	380.15	96.24%	411	387.73	94.34%
Lawhon	445	422.17	94.87%	559	538.60	96.35%	557	526.62	94.55%
Lawndale	504	479.47	95.13%	459	445.05	96.96%	434	409.70	94.40%
Milam	545	515.84	94.65%	618	590.60	95.57%	603	570.64	94.63%
Parkway	469	436.46	93.06%	462	446.65	96.68%	473	450.07	95.16%
Pierce St.	441	422.37	95.78%	411	394.55	96.00%	392	366.97	93.61%
Rankin	434	412.90	95.14%	421	404.70	96.13%	407	390.86	96.03%
Thomas St.	437	410.76	94.00%	453	433.60	95.72%	425	397.37	93.50%
Tupelo Middle School	1078	1014.83	94.14%	1023	973.25	95.14%	1113	1052.10	94.53%
Tupelo High School	2095	1933.42	92.29%	2066	1919.10	92.89%	2008	1830.68	91.17%
District Totals	7293	6845.38	93.86%	7172	6815.60	95.03%	7133	6680.48	93.66%

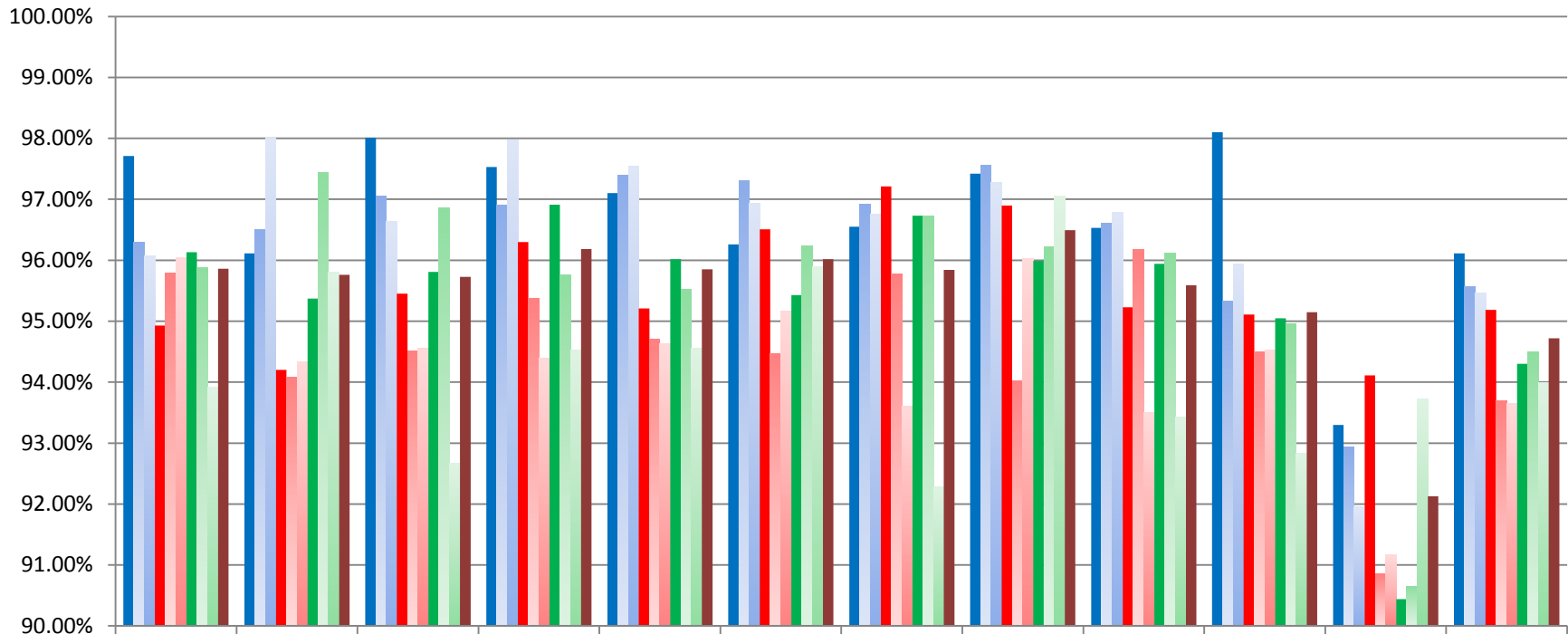
Monthly ADA Comparison for 2010-2011, 2011-2012, and 2012-2013

School	Month 7								
	2010-2011			2011-2012			2012-2013		
	ENR.	ADA	ADA %	ENR.	ADA	ADA %	ENR.	ADA	ADA %
Carver	184	174.47	94.84%	305	293.99	96.39%	308	296.07	96.13%
Church	260	252.26	97.03%	NA	NA	NA	NA	NA	NA
Joyner	405	389.09	96.08%	397	381.60	96.01%	412	392.93	95.37%
Lawhon	438	428.24	97.77%	557	538.24	96.63%	550	526.92	95.81%
Lawndale	500	483.39	96.68%	451	437.29	96.96%	432	418.65	96.91%
Milam	546	522.97	95.79%	619	594.82	96.09%	603	579.02	96.02%
Parkway	466	446.38	95.79%	467	446.20	95.55%	476	454.28	95.43%
Pierce St.	444	424.70	95.56%	415	399.28	96.22%	392	379.20	96.73%
Rankin	433	417.70	96.47%	421	406.52	96.56%	409	392.60	95.99%
Thomas St.	433	417.66	96.46%	455	435.30	95.67%	422	404.86	95.94%
Tupelo Middle School	1080	1035.48	95.88%	1031	983.59	95.40%	1110	1055.08	95.05%
Tupelo High School	2092	1942.67	92.86%	2055	1920.16	93.44%	2000	1808.86	90.44%
District Totals	7281	6935.01	95.25%	7173	6836.99	95.32%	7114	6708.47	94.30%

School	Month 8								
	2010-2011			2011-2012			2012-2013		
	ENR.	ADA	ADA %	ENR.	ADA	ADA %	ENR.	ADA	ADA %
Carver	184	176.05	95.68%	304	292.01	96.05%	311	298.19	95.88%
Church	258	249.10	96.55%	NA	NA	NA	NA	NA	NA
Joyner	401	388.65	96.92%	397	382.34	96.31%	407	396.56	97.44%
Lawhon	438	423.05	96.59%	553	534.73	96.70%	551	533.69	96.86%
Lawndale	500	480.80	96.16%	450	434.36	96.53%	434	415.61	95.76%
Milam	543	520.35	95.83%	619	591.68	95.59%	602	575.04	95.52%
Parkway	462	441.95	95.66%	466	446.62	95.84%	477	458.98	96.23%
Pierce St.	445	424.30	95.35%	414	396.94	95.88%	387	374.31	96.73%
Rankin	431	413.70	95.99%	421	406.48	96.55%	407	391.61	96.22%
Thomas St.	430	411.65	95.73%	453	435.66	96.18%	424	407.53	96.11%
Tupelo Middle School	1076	1026.60	95.41%	1031	981.01	95.15%	1110	1054.09	94.96%
Tupelo High School	2087	1929.15	92.44%	2050	1885.89	91.99%	1992	1805.64	90.65%
District Totals	7255	6885.35	94.90%	7158	6787.72	94.83%	7102	6711.25	94.50%

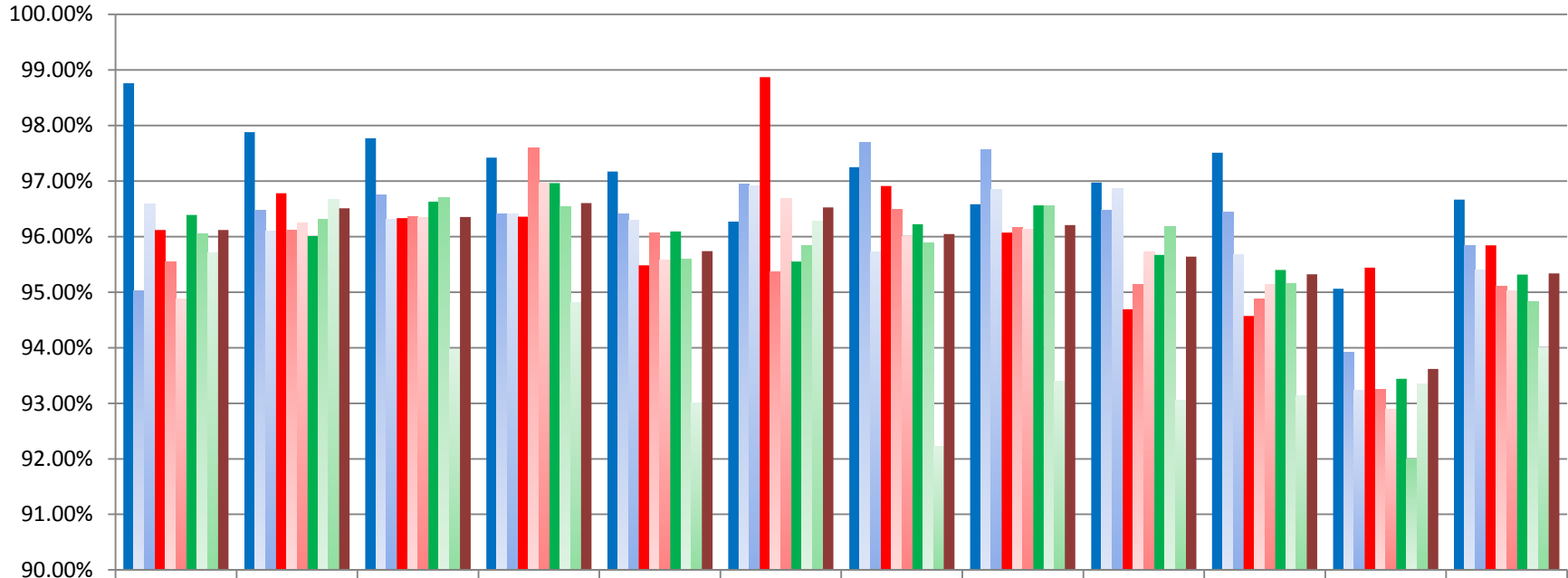
School	Month 9								
	2010-2011			2011-2012			2012-2013		
	ENR.	ADA	ADA %	ENR.	ADA	ADA %	ENR.	ADA	ADA %
Carver	184	172.88	93.96%	300	287.16	95.71%	308	289.27	93.91%
Church	256	234.81	91.73%	NA	NA	NA	NA	NA	NA
Joyner	401	383.81	95.72%	397	383.79	96.67%	406	388.98	95.80%
Lawhon	438	410.45	93.71%	544	511.22	93.97%	550	509.75	92.67%
Lawndale	501	464.27	92.67%	447	423.80	94.81%	430	406.47	94.52%
Milam	541	488.68	90.33%	613	570.08	93.00%	595	562.64	94.56%
Parkway	463	442.89	95.65%	466	448.65	96.28%	473	453.60	95.89%
Pierce St.	448	409.23	91.35%	414	381.80	92.22%	386	356.23	92.28%
Rankin	432	414.89	96.04%	418	402.94	93.39%	404	392.09	97.05%
Thomas St.	426	397.29	93.26%	455	423.39	93.05%	424	396.15	93.43%
Tupelo Middle School	1075	875.85	81.48%	1030	959.21	93.13%	1109	1029.53	92.83%
Tupelo High School	2072	1967.77	94.97%	2048	1911.66	93.34%	1963	1840.07	93.73%
District Totals	7237	6662.82	92.07%	7132	6703.70	93.99%	7048	6624.78	94.00%

Month 1 - Month 9 ADA Comparison for School Year 2012-2013



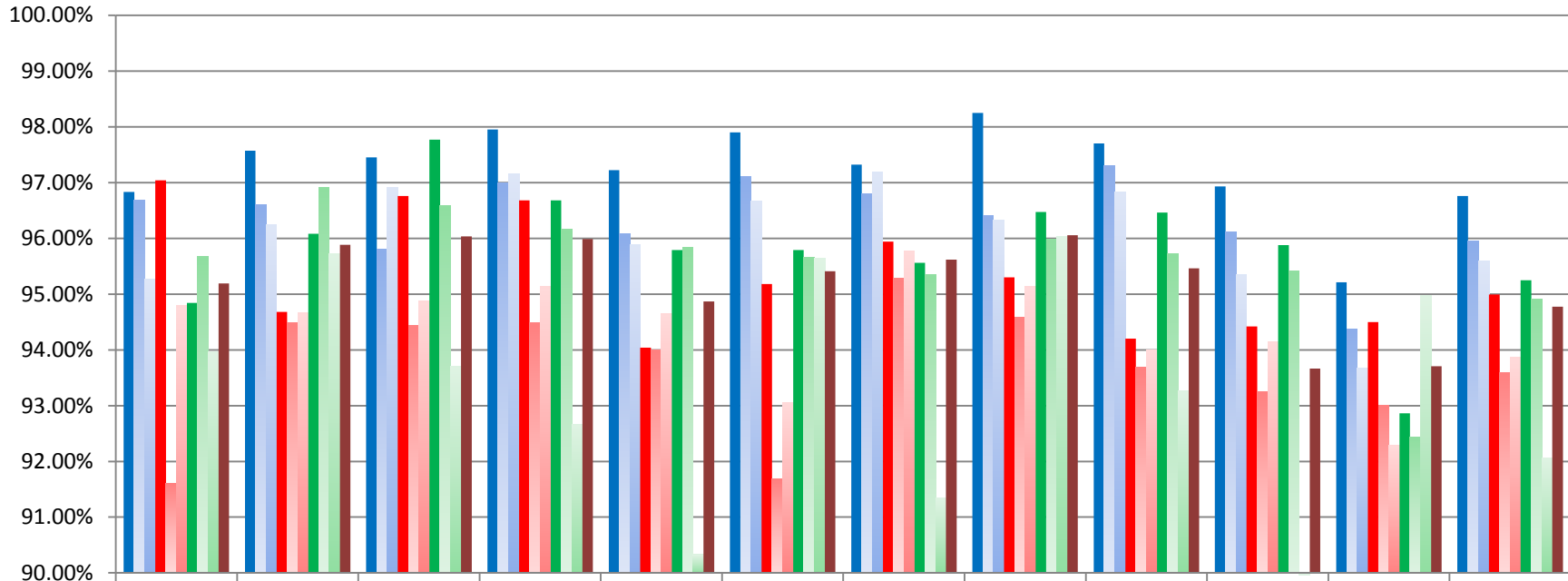
	Carver	Joyner	Lawhon	Lawndale	Milam	Parkway	Pierce St.	Rankin	Thomas St.	Tupelo Middle School	Tupelo High School	District Totals
■ M1 12-13	97.71%	96.12%	98.01%	97.53%	97.10%	96.26%	96.55%	97.42%	96.53%	98.10%	93.30%	96.11%
■ M2 12-13	96.29%	96.51%	97.06%	96.91%	97.40%	97.30%	96.92%	97.56%	96.61%	95.33%	92.94%	95.56%
■ M3 12-13	96.07%	98.00%	96.64%	97.98%	97.54%	96.93%	96.76%	97.27%	96.79%	95.94%	91.95%	95.46%
■ M4 12-13	94.93%	94.20%	95.45%	96.30%	95.21%	96.51%	97.21%	96.90%	95.23%	95.11%	94.11%	95.18%
■ M5 12-13	95.79%	94.08%	94.51%	95.37%	94.70%	94.46%	95.78%	94.02%	96.17%	94.49%	90.85%	93.70%
■ M6 12-13	96.04%	94.34%	94.55%	94.40%	94.63%	95.16%	93.61%	96.03%	93.50%	94.53%	91.17%	93.66%
■ M7 12-13	96.13%	95.37%	95.81%	96.91%	96.02%	95.43%	96.73%	95.99%	95.94%	95.05%	90.44%	94.30%
■ M8 12-13	95.88%	97.44%	96.86%	95.76%	95.52%	96.23%	96.73%	96.22%	96.11%	94.96%	90.65%	94.50%
■ M9 12-13	93.91%	95.80%	92.67%	94.52%	94.56%	95.89%	92.28%	97.05%	93.43%	92.83%	93.73%	94.00%
■ Overall	95.86%	95.76%	95.73%	96.19%	95.85%	96.02%	95.84%	96.50%	95.59%	95.15%	92.13%	94.72%

Historical Review of Month 1 - Month 9 ADA Comparison for School Year 2011-2012



	Carver	Joyner	Lawhon	Lawndale	Milam	Parkway	Pierce St.	Rankin	Thomas St.	Tupelo Middle School	Tupelo High School	District Totals
■ M1 11-12	98.76%	97.88%	97.77%	97.42%	97.17%	96.27%	97.25%	96.58%	96.97%	97.51%	95.06%	96.66%
■ M2 11-12	95.03%	96.48%	96.75%	96.40%	96.40%	96.94%	97.70%	97.57%	96.48%	96.44%	93.92%	95.84%
■ M3 11-12	96.59%	96.09%	96.31%	96.40%	96.29%	96.91%	95.72%	96.84%	96.87%	95.67%	93.24%	95.40%
■ M4 11-12	96.12%	96.78%	96.33%	96.36%	95.48%	98.87%	96.91%	96.07%	94.69%	94.57%	95.44%	95.84%
■ M5 11-12	95.55%	96.12%	96.36%	97.59%	96.06%	95.36%	96.49%	96.16%	95.13%	94.88%	93.25%	95.11%
■ M6 11-12	94.87%	96.24%	96.35%	96.96%	95.57%	96.68%	96.00%	96.13%	95.72%	95.14%	92.89%	95.03%
■ M7 11-12	96.39%	96.01%	96.63%	96.96%	96.09%	95.55%	96.22%	96.56%	95.67%	95.40%	93.44%	95.32%
■ M8 11-12	96.05%	96.31%	96.70%	96.53%	95.59%	95.84%	95.88%	96.55%	96.18%	95.15%	91.99%	94.83%
■ M9 11-12	95.71%	96.67%	93.97%	94.81%	93.00%	96.28%	92.22%	93.39%	93.05%	93.13%	93.34%	93.99%
■ Overall	96.12%	96.51%	96.35%	96.60%	95.74%	96.52%	96.04%	96.21%	95.64%	95.32%	93.62%	95.34%

Historical Review of Month 1 - Month 9 ADA Comparison for School Year 2010-2011



	Carver	Joyner	Lawhon	Lawndale	Milam	Parkway	Pierce St.	Rankin	Thomas St.	Tupelo Middle School	Tupelo High School	District Totals
■ M1 10-11	96.83%	97.57%	97.45%	97.95%	97.22%	97.90%	97.32%	98.25%	97.70%	96.93%	95.21%	96.76%
■ M2 10-11	96.69%	96.61%	95.80%	96.99%	96.08%	97.10%	96.80%	96.40%	97.30%	96.12%	94.38%	95.95%
■ M3 10-11	95.27%	96.24%	96.91%	97.16%	95.88%	96.67%	97.19%	96.32%	96.83%	95.35%	93.68%	95.60%
■ M4 10-11	97.04%	94.68%	96.76%	96.68%	94.04%	95.18%	95.94%	95.30%	94.20%	94.42%	94.50%	94.99%
■ M5 10-11	91.61%	94.48%	94.44%	94.48%	93.99%	91.68%	95.28%	94.59%	93.69%	93.25%	93.01%	93.59%
■ M6 10-11	94.79%	94.66%	94.87%	95.13%	94.65%	93.06%	95.78%	95.14%	94.00%	94.14%	92.29%	93.86%
■ M7 10-11	94.84%	96.08%	97.77%	96.68%	95.79%	95.79%	95.56%	96.47%	96.46%	95.88%	92.86%	95.25%
■ M8 10-11	95.68%	96.92%	96.59%	96.16%	95.83%	95.66%	95.35%	95.99%	95.73%	95.41%	92.44%	94.90%
■ M9 10-11	93.96%	95.72%	93.71%	92.67%	90.33%	95.65%	91.35%	96.04%	93.26%	81.48%	94.97%	92.07%
■ Overall	95.19%	95.88%	96.03%	95.99%	94.87%	95.41%	95.62%	96.06%	95.46%	93.66%	93.70%	94.77%