

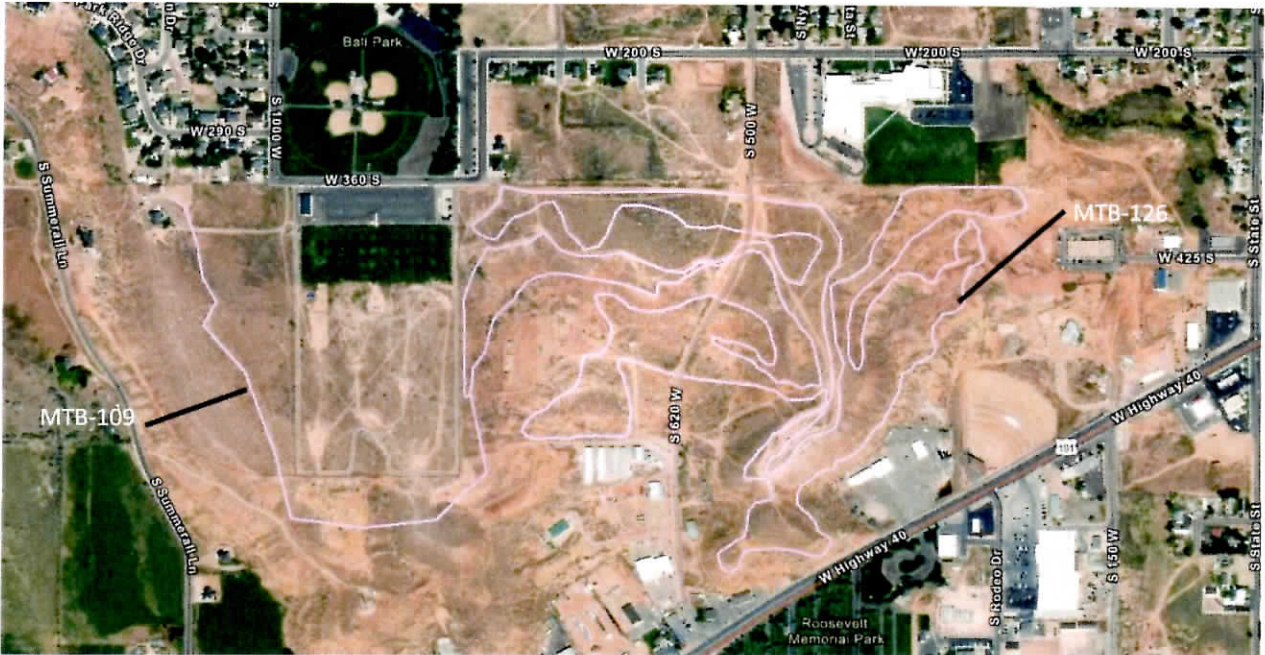
ROOSEVELT MOUNTAIN BIKE RACETRACK TRAIL

MASTERPLAN PROJECT NUMBERS: MTB-126 AND MTB-109

PROJECT DETAILS:

Utah High School Mountain Biking teams started in 2012 and have since experienced over 1,000% growth according to the Utah High School Cycling League. The closest mountain biking racetrack for use by the students of Roosevelt High School is located north of Jensen, Utah, 40 miles from the Duchesne County border. Currently junior high and high school students in Duchesne County that are interested in competing must join the Uintah High School team in Vernal. The proposed project (MTB-126) would construct a Mountain Bike Track to help form a local team and provide Duchesne County students a closer location to practice and compete. The racetrack would also encourage mountain bikers traveling through the area to stop and visit, therefore, having positive economic impact on the area. The mountain bike racetrack would complement the existing pump track at Constitution Park and promote healthy and active recreation in Roosevelt City. The track could also be utilized by the junior high and high school cross country track teams.

Most of the track would be on top of a plateau south of Roosevelt Junior High and next to Constitution Park. Some of the trail can drop down into a small valley surrounded by red sandstone cliffs. Currently there are several user-created trails that are being used by local mountain bikers. The proposed project includes a network of trails and interconnecting paths to bring diversity for the riders. MTB-109 would provide a connection between the MTB-126 trail system and the west, allowing users to access the MTB-126 trail system in another fashion.



Proposed Trail Route