



Leman Middle School

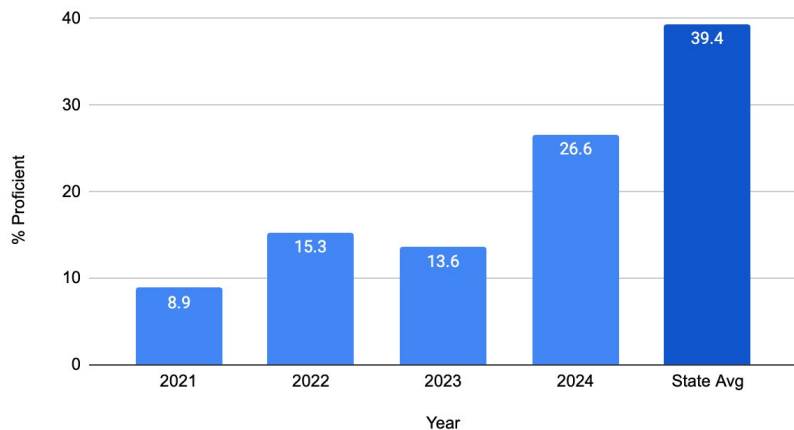
Programming Update

Maggie Lay, Principal
March 20, 2025

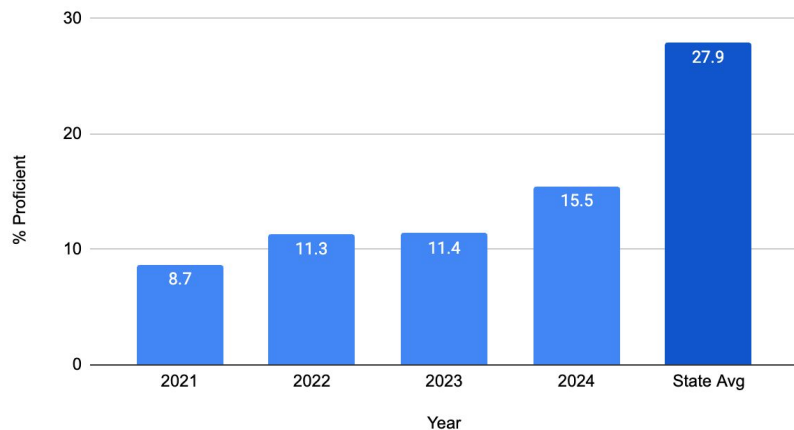
Our students are getting High School Ready!

Building IAR Proficiency Over Time

IAR Reading Proficiency Growth Over Time



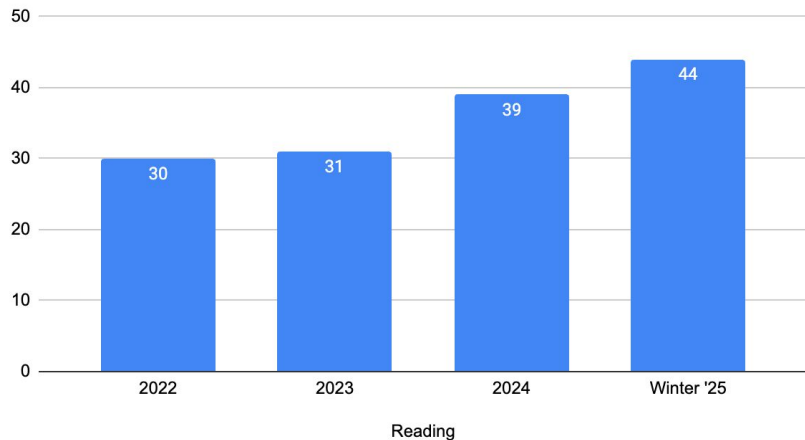
IAR Math Proficiency Growth Over Time



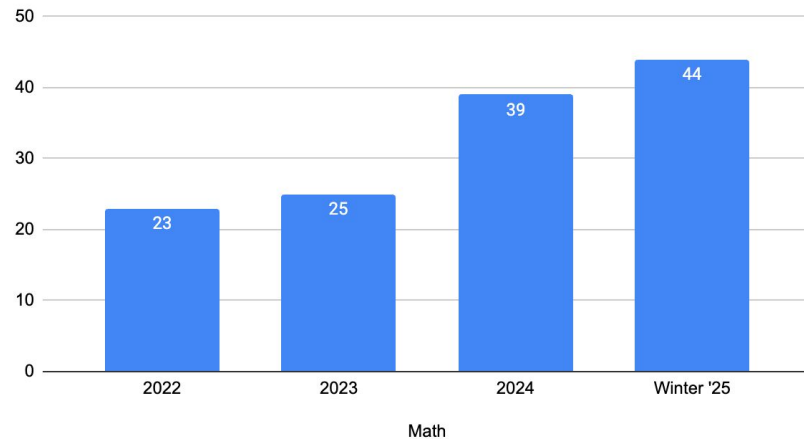
Our students are getting High School Ready!

8th Grade Spring Map Data Over Time

8th Grade MAP Reading Proficiency

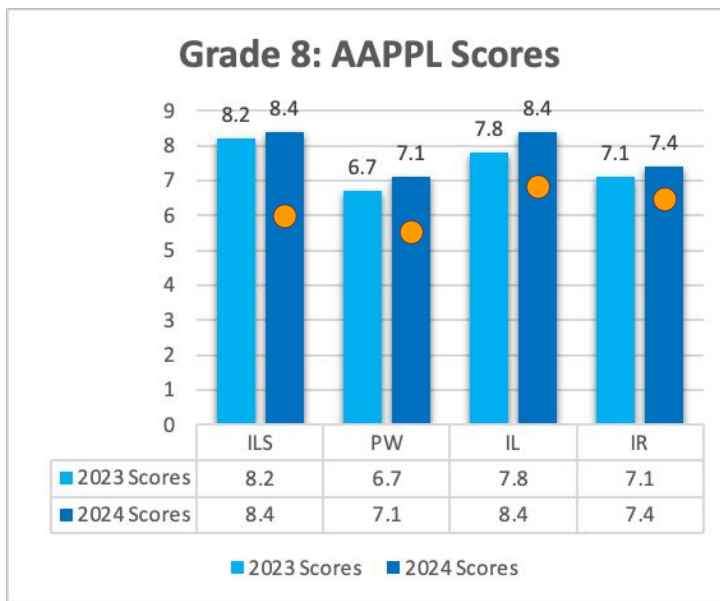


8th Grade MAP Math Proficiency



Our students are getting High School Ready!

8th Grade AAPPL Test Scores



KEY

ILS - Interpretive Listening and Speaking

PW - Presentational Writing

IL - Interpretive Listening

IR - Interpretive Reading

Our students are getting High School Ready!

Anecdotally, we have received positive feedback from the high school about the LMS class of 2024.

Our current students are focused on their futures.

Academic Changes Over Time

Over the past several years, we have implemented several changes to our academic programming to promote high school readiness:

- Assessment rigor
- Embedded IAR practice
- Goal setting & explaining relevance of assessments
- Homework policy
- At Risk communication with embedded supports
- Purposeful use of Chromebook
- Homework Help Center



Academic Changes Over Time

- We have implemented AVID school-wide
- AVID instructional strategies focus on WICOR:
 - Writing, Inquiry, Collaboration, Organization, and Reading
- These high-leverage strategies help improve achievement and prepare students for life beyond high school
- Students are consistently seeing WICOR strategies across all content areas

Academic Changes Over Time

1. Our literacy block is structured to ensure fidelity across classrooms and provide time for differentiation
 - Teachers are trained to use IXL and UFLI as interventions
 - Teachers participate in Data Days for Literacy
2. We utilize an ELA fidelity checklist and walkthroughs to provide teacher feedback
3. Assessments that mirror IAR
4. Implemented IXL and included IAR and MAP practice plans
5. Ongoing, differentiated professional development based on student data
6. 1:1 MAP CGI meetings with ELA teachers

Changes in Enrollment

- As predicted, the enrollment in District 33 has dropped over the past several years because households are staying put.
- Seven years ago, Leman Middle School served 1450 students. Next year, we are projected to have approximately 950 students.



Exploratory Enrollment Changes

Exploratory remains an area where we see patterns for enrollment that are difficult to staff correctly.

- Band and Orchestra are experiencing tremendous growth
- Advanced Spanish maintains high levels of enrollment
- Other classes are averaging 12-15 students
- We have enough Exploratory staff to accommodate many more children than we now have in our building

Exploratory Enrollment Changes

Course	22-23	23-24	24-25	Course	22-23	23-24	24-25
6th Grade SEL	125	59	24	8th Grade Civics	127	30	21
6th Grade Civics	105	27	30	8th Grade AVID	109	81	80
7th Grade Civics	129	18	29	8th Pathway 1	159	110	186
7th Grade AVID	97	70	98	8th Pathway 2	172	106	X
7th Pathway 1	196	127	185	Spanish	62	60	40
7th Pathway 2	114	93	X	Latinos in Action	92	88	79

LMS Special Programming

Using our currently allocated staff, we are able to offer:

- Science and Social Studies Enrichment
- “Push-in” differentiation teachers for Newcomers
- Robust Exploratory offerings



Staffing for Enrollment Changes

We remain committed to being fiscally responsible in our staffing.

- **LMS reduced our staff by 7 positions last summer through natural attrition (retirements, staff moving on)**
- **We are on track to reduce several more positions this year also through natural attrition**
- **Our class sizes remain comfortable**

Shifting Building Usage

Classroom Space - we have plenty!

- With our enrollment reduction, we are moving toward a two-team model
- With more efficiency in staffing, we now have some rooms that are only used for a couple of periods per day



Behavior Changes Over Time

We have taken several steps to support positive behaviors in our building

- Behavior coaching for non-tenured staff
- Hallway monitors in all areas
- Clear systems for tiered intervention
- Tight cell phone policy
- Perfect Pass for on-time to class and school
- 3-2-1 Support Network for students



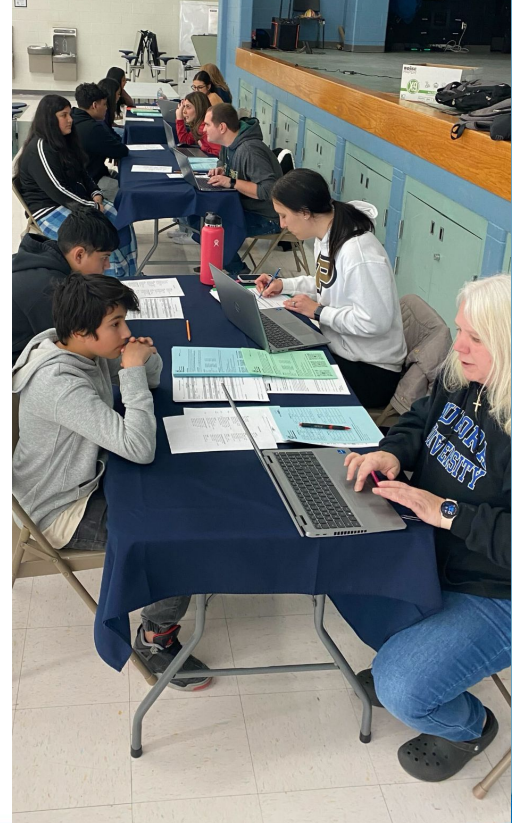
Heavy emphasis on transitions

8th to 9th

- Further enhancement of our current practices continues
- D94 has been a strong collaborative partner with us

5th to 6th

- We will capture data from incoming 5th graders in October of next year regarding the transition
- We continue our work with elementary administrators to create more “middle school ready” expectations for learning



Next Steps

- Literacy pilot
- Seek input from students, parents and community on LMS Exploratory Options
- Consider our use of the space in our building
- Further reduce our staffing where we are able
- Work with elementary schools to further enhance the 5th to 6th grade transition

Final Thoughts



Our students, families, and staff are rock-stars!

There are many ups and downs in a middle school, but we are extremely proud of the transformation that we are undergoing at LMS!