

No. _____



UNITED INDEPENDENT SCHOOL DISTRICT AGENDA ACTION ITEM

TOPIC PROPOSED BOUNDARY CHANGE FOR 2008-2009 FOR MALAKOFF
AND BORCHERS ELEMENTARY

SUBMITTED BY: MIKE GARZA **OF:** DIRECTOR OF SUPPORT SERVICES

APPROVED FOR TRANSMITTAL TO SCHOOL BOARD: _____

DATE ASSIGNED FOR BOARD CONSIDERATION: JUNE 18, 2008

RECOMMENDATION: It is recommended that the Board of Trustees approve the boundary change for School Year 2008-2009 as presented for Malakoff Elementary and Charles Borchers Elementary.

RATIONALE: The proposed boundary will help alleviate Malakoff Elementary and allow growth for Charles Borchers Elementary in the future. No current students will be affected by these changes.

BUDGETARY INFORMATION

N/A

BOARD POLICY REFERENCE AND COMPLIANCE

N/A

NEW PROPOSED SCHOOL ATTENDANCE ZONES FOR
2008-2009

Charles Borchers Elementary

The boundary begins at the intersection of Del Mar and Bob Bullock Loop; the boundary includes everything to East of Bob Bullock Loop and North of Del Mar ending at San Isidro East Subdivision. The boundary continues South of Bob Bullock onto Anejo moving South within the San Isidro Los Agaves Subdivision. The boundary continues South on Havana, than moves South on Casimir, & Southwest of Stonefield around Woodridge Heights Unit I & II. The boundary moves west to International, then continues south on International Blvd. moving east then south onto Orange Blossom including everything to east of these areas. The boundary continues south then east including the Deer Ridge Subdivision and the Shiloh Crossing Subdivision.

Malakoff Elementary

The Malakoff boundary begins at the intersection of San Dario; East to International to include all of Tiara, Ruidoso, & San Isidro Subdivisions; North of Denmark Ln, and also West of Casimir & Anejo. Moving North on Anejo towards Bob Bullock, Continuing west on Bob Bullock then north onto the San Isidro Ranch-East Point Center.

New Streets from the San Isidro Northeast Subdivision
to be included within the Borchers Elementary
Boundary

(Streets)

JUAN ESCUTIA BLVD.

UNITED AVE.

BUCKY HOUDMAN DR.

GUANAJUATO DR.

COAHULLA LP.

SONORA DR.

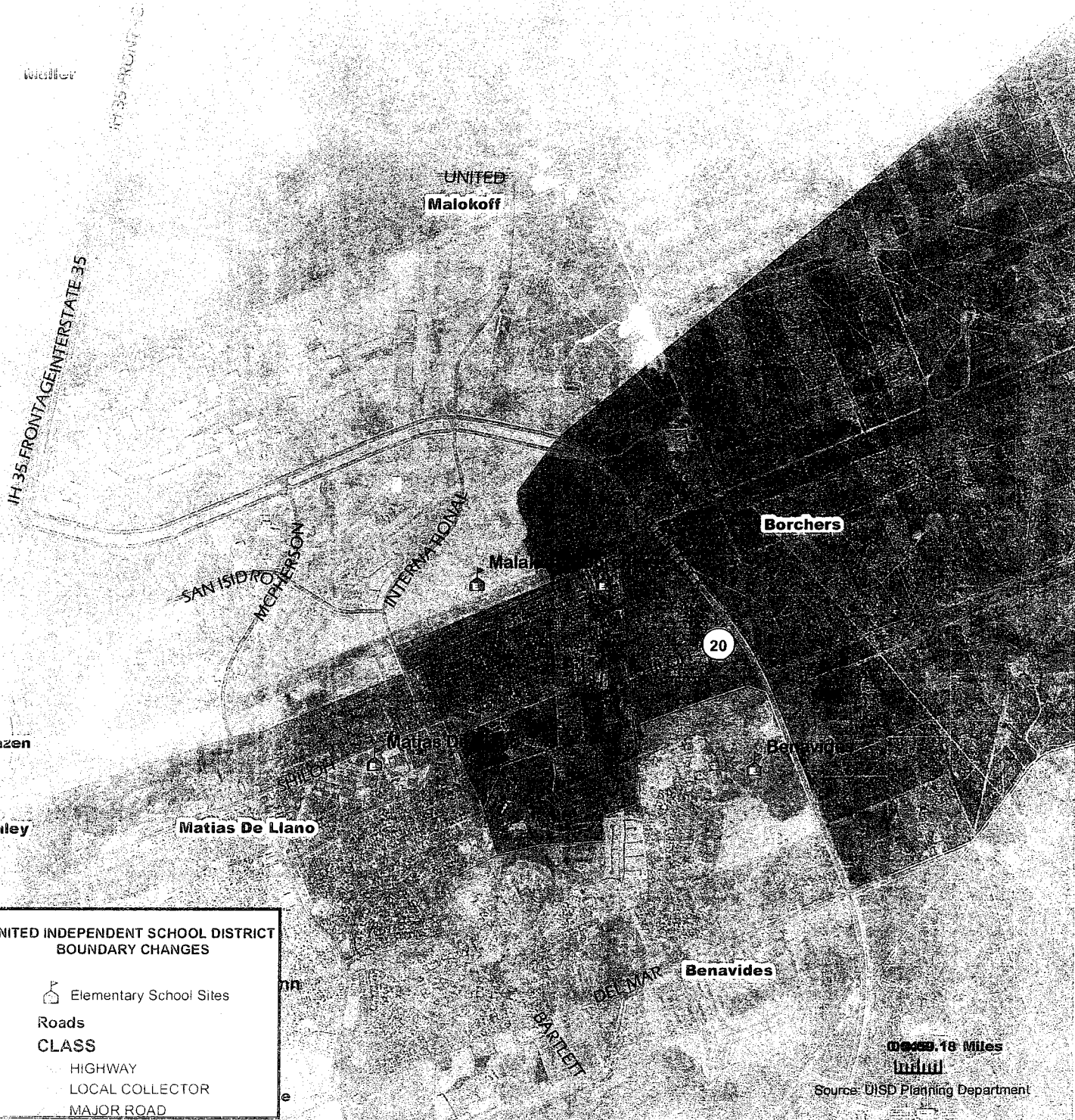
NUUEVO LEON DR.

VERACRUZ DR.

VERACRUZ DR.

SIMON BOLIVAR BLVD

INTERNATIONAL (North of
the 10800 BLK)



Weller

IH 35 FRONTAGE

IH 35 FRONTAGE INTERSTATE 35

UNITED
Malokoff

Borchers

SAN ISIDRO
MCPHERSON

INTERNATIONAL

20

Kazen

inley

Matias De Llano

Benavides

DEL MAR

BARRETT

**UNITED INDEPENDENT SCHOOL DISTRICT
BOUNDARY CHANGES**

Elementary School Sites

Roads

CLASS

HIGHWAY

LOCAL COLLECTOR

MAJOR ROAD


0 0.5 1.0 Miles



Source: DISD Planning Department



**UNITED INDEPENDENT SCHOOL DISTRICT
BOUNDARY CHANGES**

 Elementary School Sites

Roads


CLASS

HIGHWAY

LOCAL COLLECTOR

MAJOR ROAD

0 0.18 Miles



Source: UISD Planning Department