



Wireless Connectivity in San Elizario ISD

TASB - Diamond Program Overview

TASB is working with Diamond Communications to bring best-in-class wireless services and connectivity solutions to its Independent School Districts ("ISDs")

- Diamond has full-service wireless infrastructure capabilities and will work in close collaboration with each ISD to meet critical objectives:
 - Health and safety considerations
 - Educational opportunities
- Diamond to market school properties to wireless carriers
- Provide ISDs with connectivity solution opportunities
- Reduce safety concerns by improving connectivity for school resource officers, emergency services, and educators
- Keep students and parents connected more reliably
- Provide ISDs with a no-cost option to improve wireless connectivity in and around school properties
- Potential to create a long-term revenue stream for ISDs

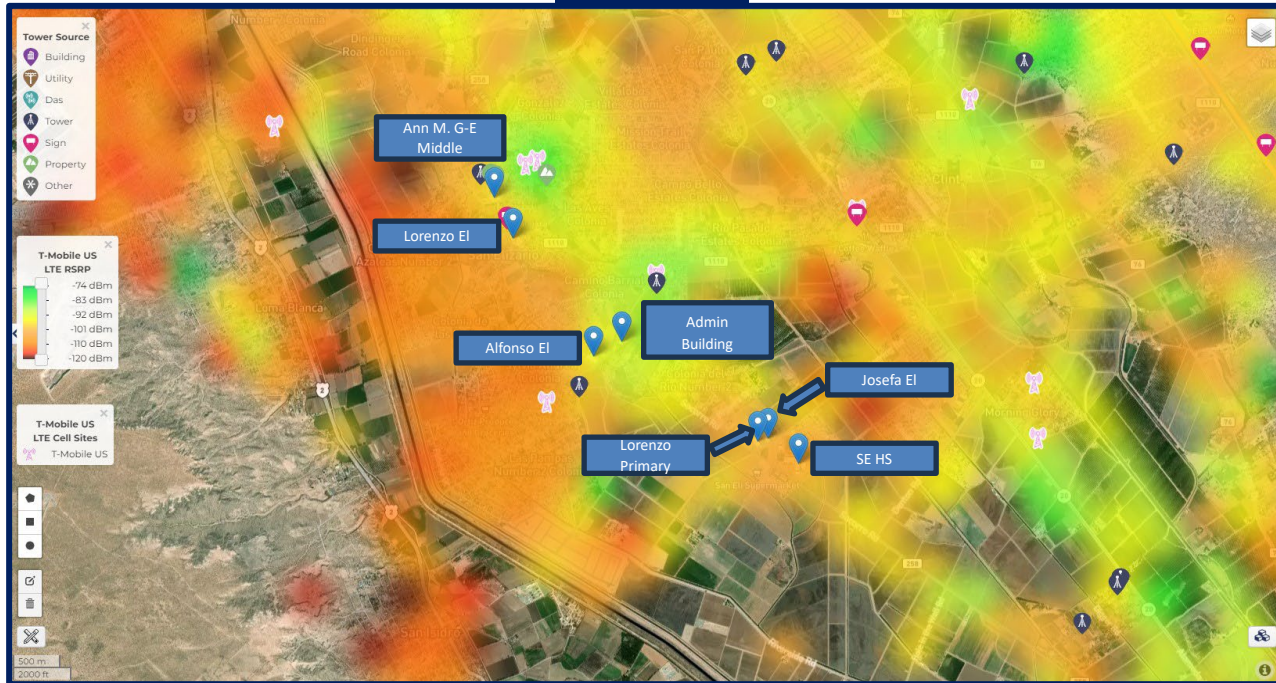
ISD Coverage Breakdown (500m RSRP Average)

	T-Mobile	Verizon	AT&T
San Elizario High School	-105 dBm	-99 dBm	-110 dBm
Ann M. Garcia-Enriquez Middle School	-98 dBm	-93 dBm	-115 dBm
Lorenzo G. Alarcon Elementary School	-101 dBm	-104 dBm	-116 dBm
Alfonso Borrego Sr. Elementary School	-96 dBm	-82 dBm	-112 dBm
Josefa L. Sambrano Elementary School	-105 dBm	-99 dBm	-111 dBm
Lorenzo G. Loya Primary School	-105 dBm	-99 dBm	-112 dBm
San Elizario ISD Admin Building	-93 dBm	-82 dBm	-109 dBm

Less than -100 dBm is considered unreliable coverage

Overall Coverage – T-Mobile

T-Mobile

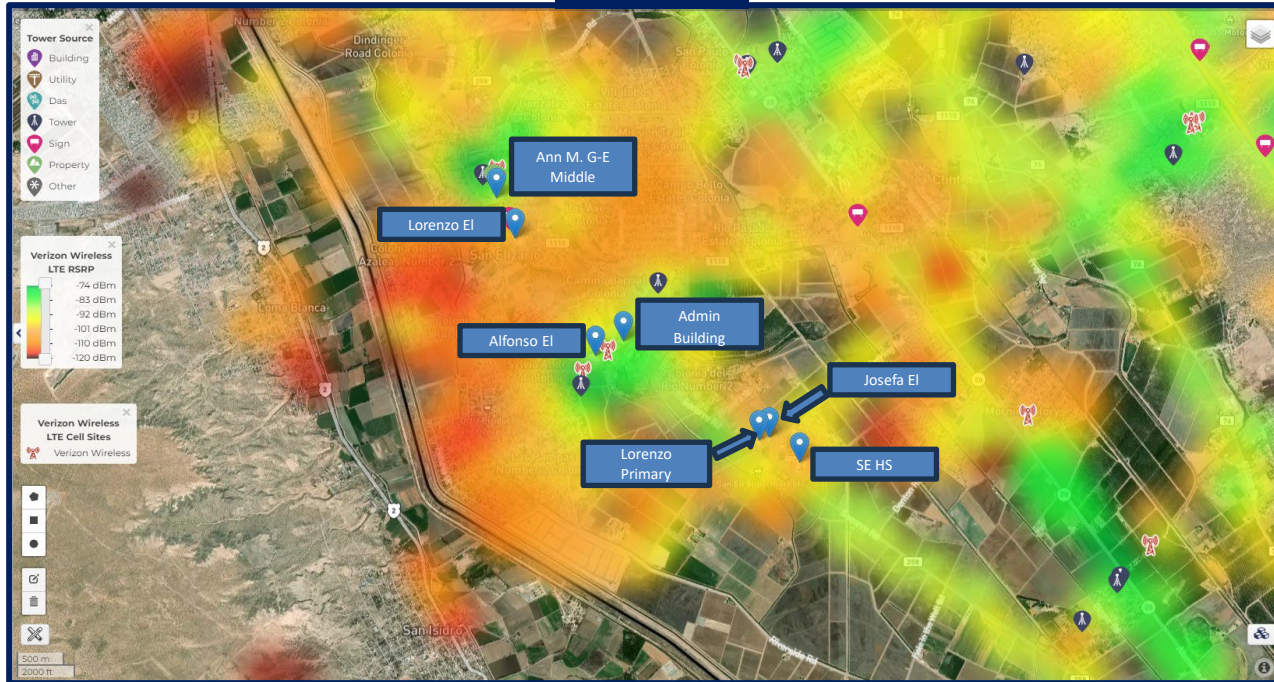


- Green and yellow areas signify reliable coverage
- Red and orange areas signify unreliable coverage

Based on crowd-sourced data provided by Ookla from January 2023 – December 2023.

Overall Coverage – Verizon

Verizon

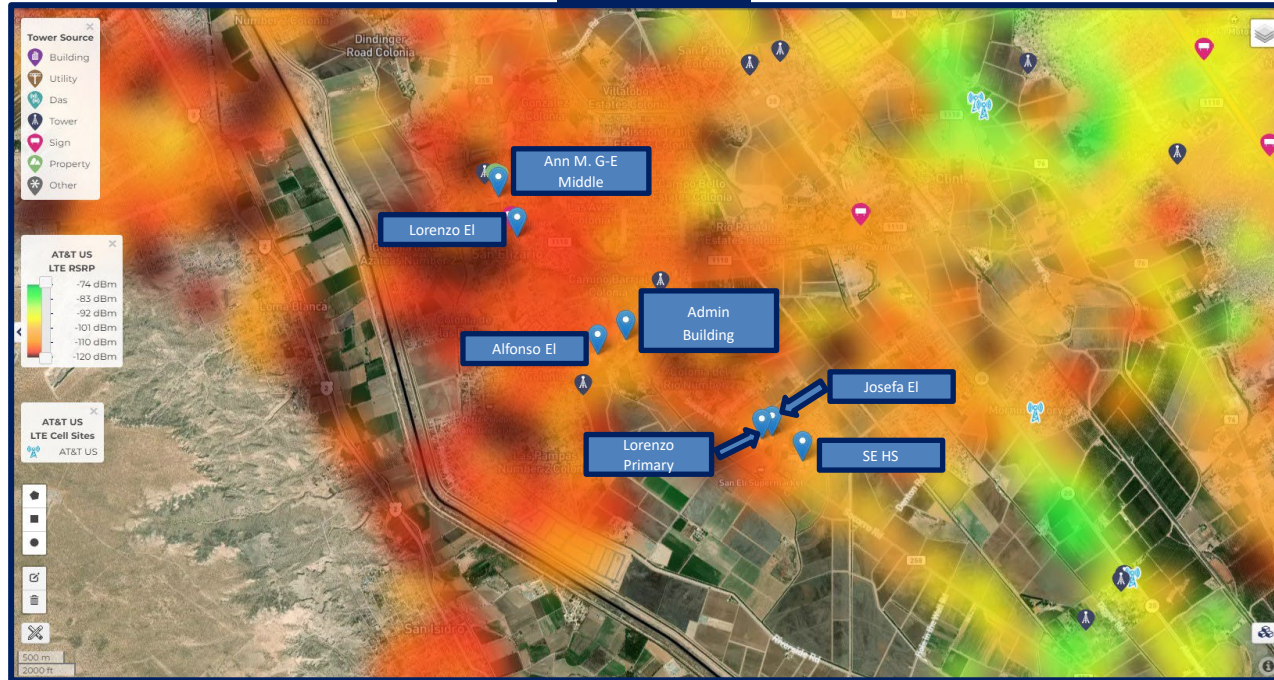


- Green and yellow areas signify reliable coverage
- Red and orange areas signify unreliable coverage

Based on crowd-sourced data provided by Ookla from January 2023 – December 2023.

Overall Coverage - AT&T

AT&T



- Green and yellow areas signify reliable coverage
- Red and orange areas signify unreliable coverage

Based on crowd-sourced data provided by Ookla from January 2023 - December 2023.

About Diamond

Diamond is a U.S. leader in the development and management of wireless communications infrastructure

- Founded in 2006 by tower industry executives
- National presence with offices in 18 states
- Significant presence and experience in Texas
- Key executives have 15 - 25 years of wireless industry experience
- Over 4,000 tenanted sites (owned and managed)
- Approximately 400,000 sites currently under management
- Proven track record of successful management programs
- Highly-experienced team with operational, engineering, legal and financial expertise
- Experience deploying emergency communications networks on our sites
- Unique capabilities for indoor and outdoor connectivity solutions



Diamond is management-controlled with additional financing provided by both individual and institutional sources, including Goldman Sachs (NYSE: GE), John Hancock and the Ontario Teachers' Pension Plan Board

Turnkey Management Services



All services will be performed in close collaboration with the ISD using established processes.

Build To Suit Capabilities

Experience and Consistency

- Diamond has developed sites for wireless carriers and government entities for over 20 years
- Diamond works with the community and landowners to design towers that solve coverage deficiencies and meet aesthetic requirements
- Experience overcoming obstacles from site acquisition to zoning to permitting to construction
- Through our marketing capabilities, Diamond's nationwide relationships with U.S. wireless carriers, federal, state and local agencies and municipalities will drive revenue on newly built towers

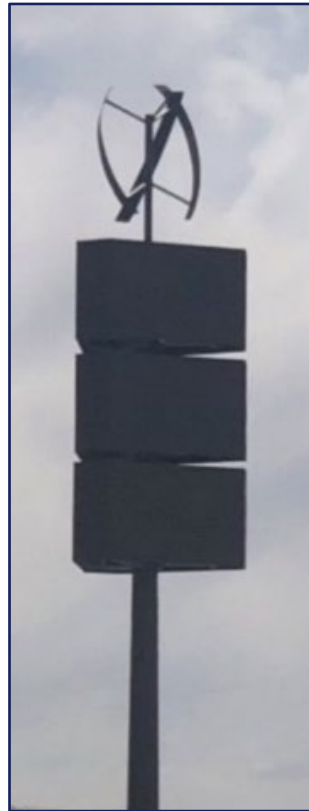
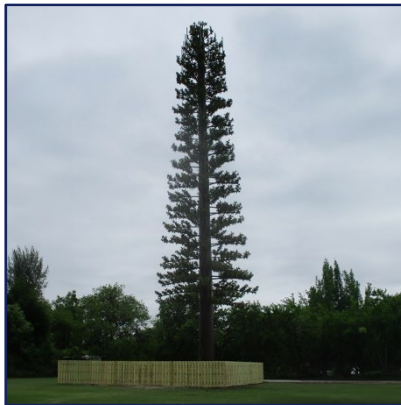
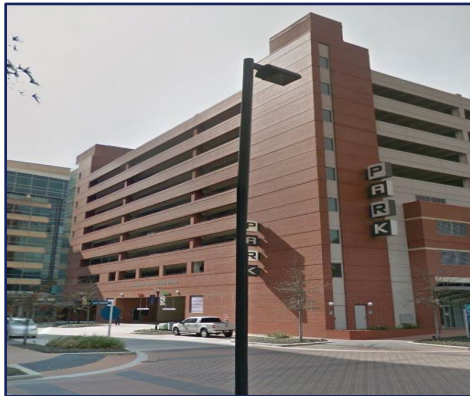
Customer Service

- Diamond values long-term relationships
- Utilize a dedicated team and senior management focus to meet our partners' timelines

Communication

- Provide frequent project updates
- Provide access to our project management program
- Work collaboratively with your teams and other contractors involved in the project

Tower Examples



Next Steps

1. Physical review of the ISD properties
2. Discuss and understand the objectives and goals of the ISD
3. Initial development of a solutions plan