

Believe. Belong. Become.



Student Academic Achievement Presentation

Tiffany Bone, Ed.D.
Assistant Superintendent



Mission

Equip all students with the skills to be productive members of society.

Values

We will always put student needs first.

We believe relationships matter.

We expect accountability.

We operate with transparency.

We prioritize student and staff safety.

Vision

We are a destination district built on relationships, collaboration, and a culture of excellence.

Goals

- Students will master grade-level reading targets by the beginning of third grade. For their remaining school career, they will achieve reading targets at/or above grade level.
- Students will perform at/or above grade level in math.
- Schools and administrative buildings will be safe, welcoming environments where authentic, productive relationships are valued.
- Our system guarantees relevant classes for every secondary student and maximizes student choice.

Assessment/Standards Revisions

PARCC
1 Year

ACT Aspire
7 Years

2022-
2023

Spring
3rd-10th Gr.
Fall
K-2 Screener

New ATLAS
Assessment

Spring
K-2
Summative

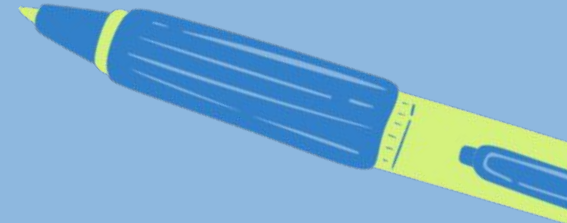
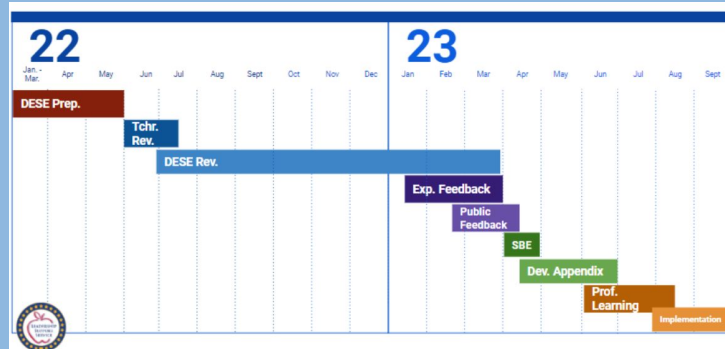
2015

2016

ELA & Math
Standards

2024

2025



ACT ASPIRE

SAMPLE QUESTION

A store is having a sale on 3 different items. Each sign below shows the original price of an item and how to calculate the discount for that item.

Click and drag the signs below to place them in order from least amount of **discount** to greatest amount of **discount**.

Original Price:
\$25.00

Take 10% off,
and then take
\$1.00 off that
amount.

Original Price:
\$24.00

Take 10% off,
and then take
10% off that
amount.

Original Price:
\$30.00

Take \$1.50 off,
and then take
10% off that
amount.

Least

Greatest



TEST TIME



6th READING & 8th MATH

8th READING & Algebra I

5th READING & MATH

SCIENCE - 5th & 8th

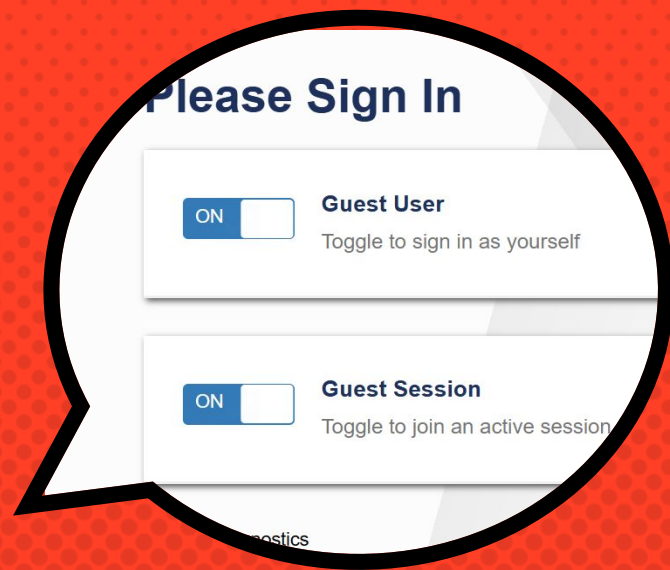


DIRECTIONS

- Pair Up
- Each pair will be assigned questions: ELA & math, or science
- Record your answers on a piece of scratch paper

ATLAS

All students have access to Practice/Training tests for all grade levels and subjects.

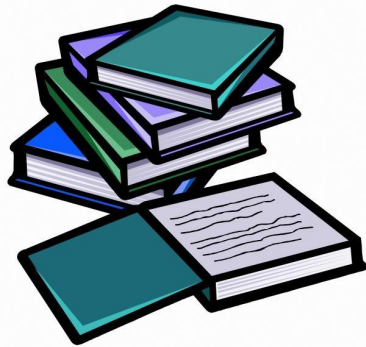


[9th ELA Sample](#)

[7th Math Sample](#)

FSPS AND STATE COMPARISONS

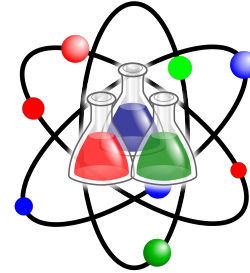
ELA



MATH



SCIENCE



STRATEGIC DISTRICTWIDE ACTIONS



Coaching Cycles

Teachers at EVERY school participate in coaching cycles that focus on teacher practices to accelerate student learning.



Assessments

Students are assessed multiple times throughout the year using the same format/level of rigor as the summative assessment...practice the way you play.



Teaching & Learning Snapshot Tool

Building and district leaders use the Snapshot Tool to observe teaching and learning and provide explicit feedback to teachers.



Collaborations

Same grade/subject area collaborations for teachers to analyse student work:

- Content, Context, Cognitive Demand
- Exemplar Lessons for all math/literacy Essential Standards

FSPS ATLAS Distribution

BASELINE ATLAS Distribution - % of all students performing at each level

	ELA (Grades 3-10)	Math (Grades 3-8, Algebra 1 & Geometry)	Science (Grades 3-8 & Biology)
LEVEL 4	10%	10%	11%
LEVEL 3	22%	19%	21%
LEVEL 2	39%	31%	37%
LEVEL 1	29%	40%	32%

NOTE

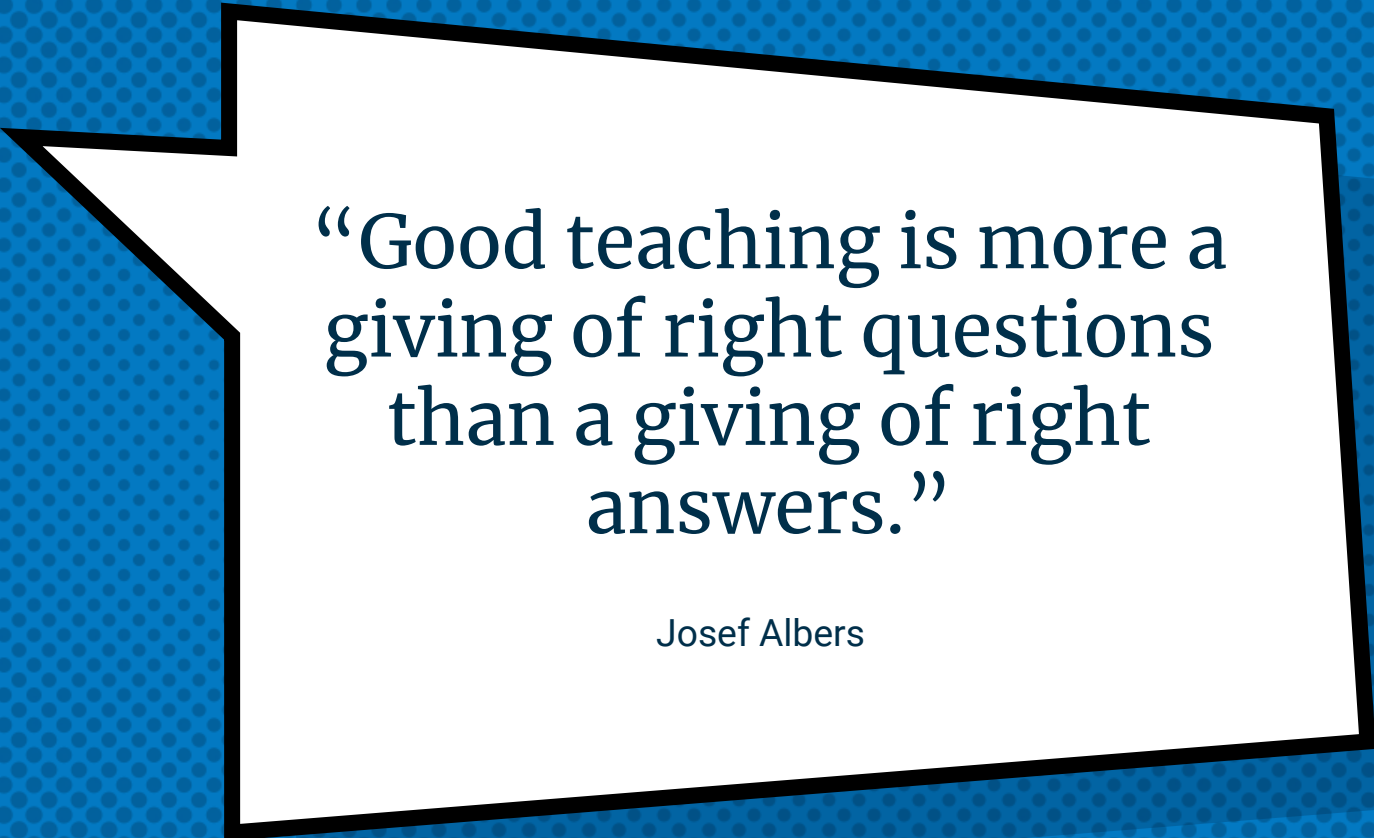
The 2024 ATLAS results provide a new baseline for Arkansas student performance and should **not** be compared to prior year outcomes on different assessments.

Discuss with Your Team



Do you see a high number of students in level 2 than level 3? If so...

- Review teaching practices to promote higher rigor in classroom instruction.
- Teachers may be teaching the standards but may not be teaching to the depth required.



“Good teaching is more a giving of right questions than a giving of right answers.”

Josef Albers