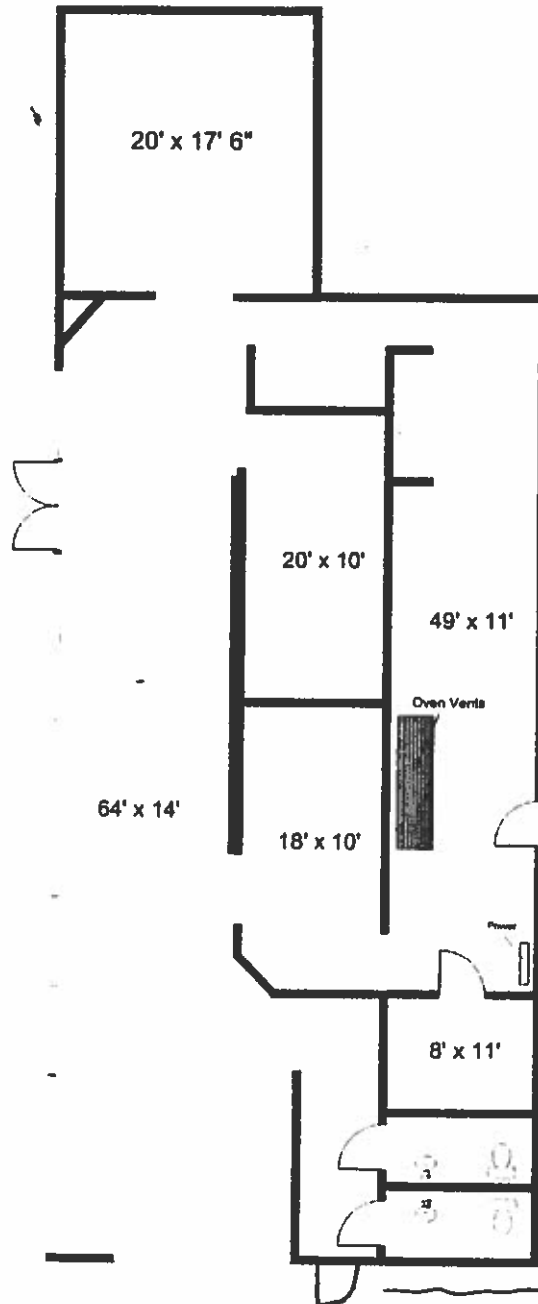


709 E. Pecan
Celina, TX
Approx 2,625 Sq Ft. (Not to Scale)

(Note: Interior dimensions are approximate and intended for space planning purposes only)



MANAGED BY:
The Dryden Company

For Information Call:
SUZANNA DRYDEN JENSEN
(972) 934-2233 x 225

*New Emergency
Exit*