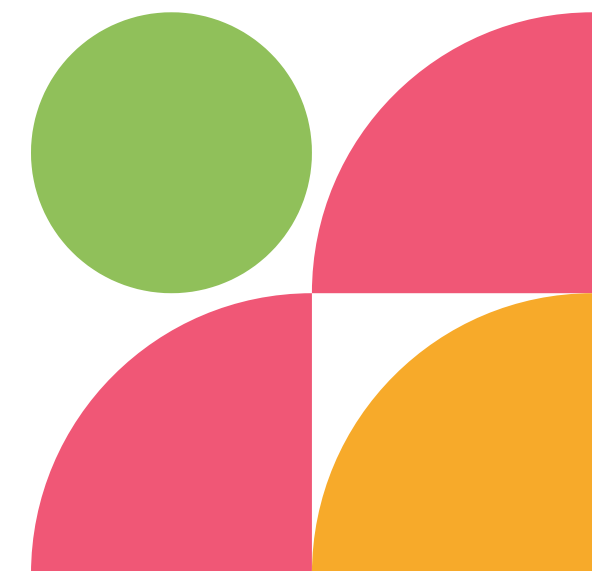
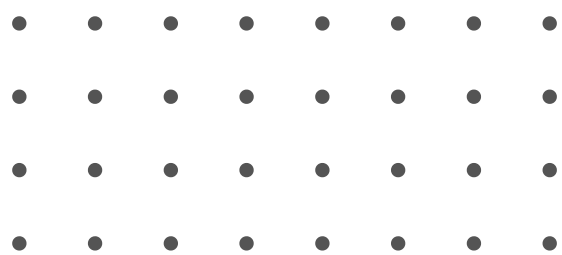


# PROFILE OF A GRADUATE

Harlem School District 122





• • • • •  
• • • • •  
• • • • •  
• • • • •

# HARLEM MISSION

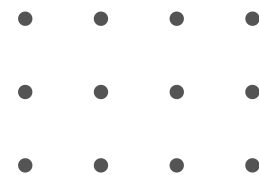
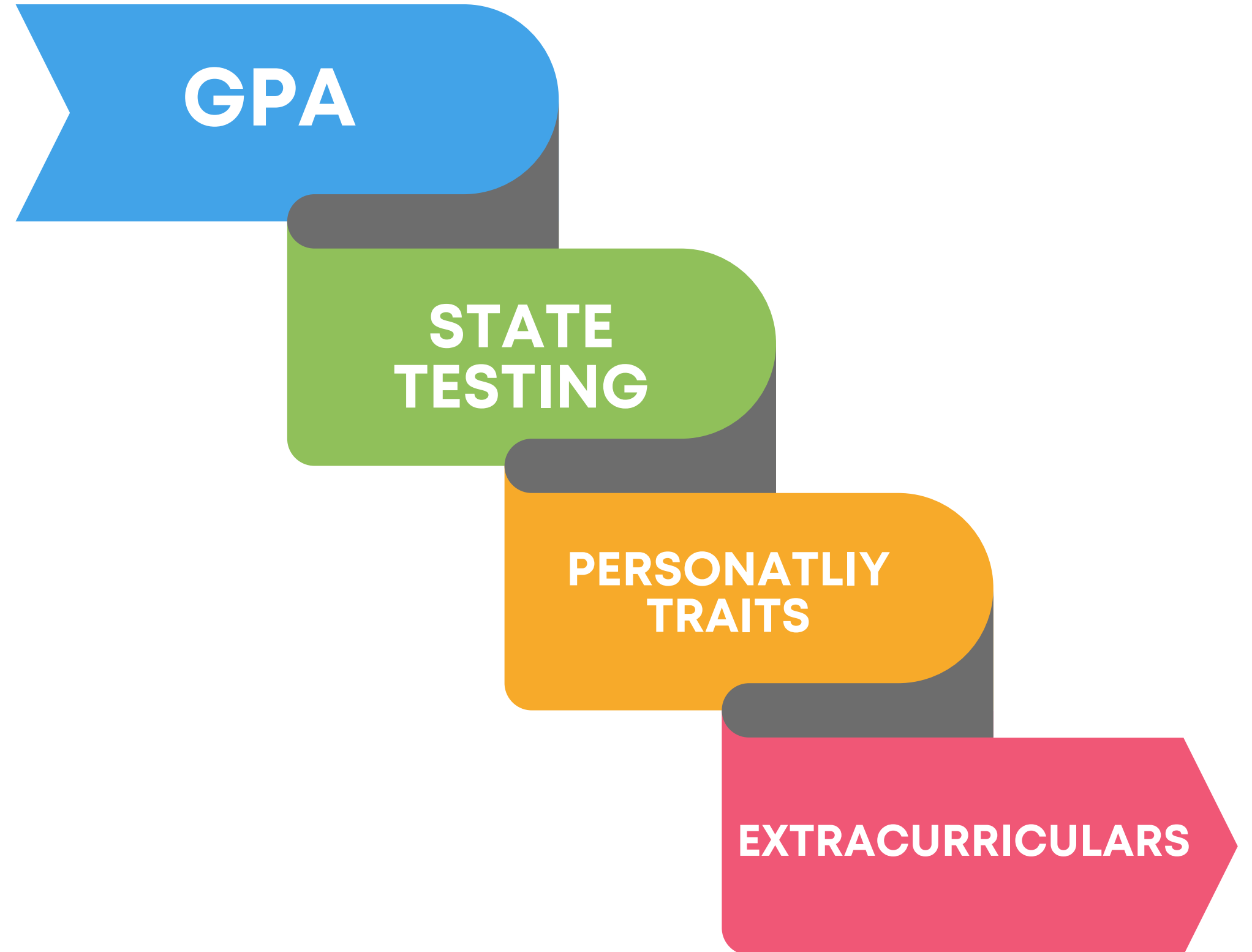
The Mission of the Harlem School District, as a vital part of the community, is to help diverse learners realize their unlimited potential by providing an educational program dedicated to academic excellence and **the development of strong character** in a safe and respectful learning environment.





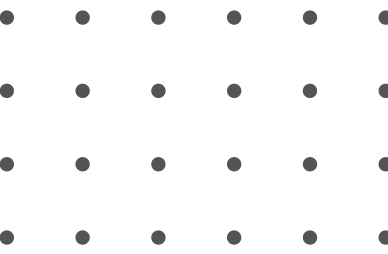
# US News, Clayboarn, 2022

Points of interest  
that colleges and  
universities are  
taking into  
consideration  
include:





# COLLEGE BOARD: TOP CHARACTER QUALITIES COLLEGES WANT



Leadership



01

04



Sense of Social  
Responsibility

Willingness to take  
risks.



02

05



Commitment to Service

Initiative

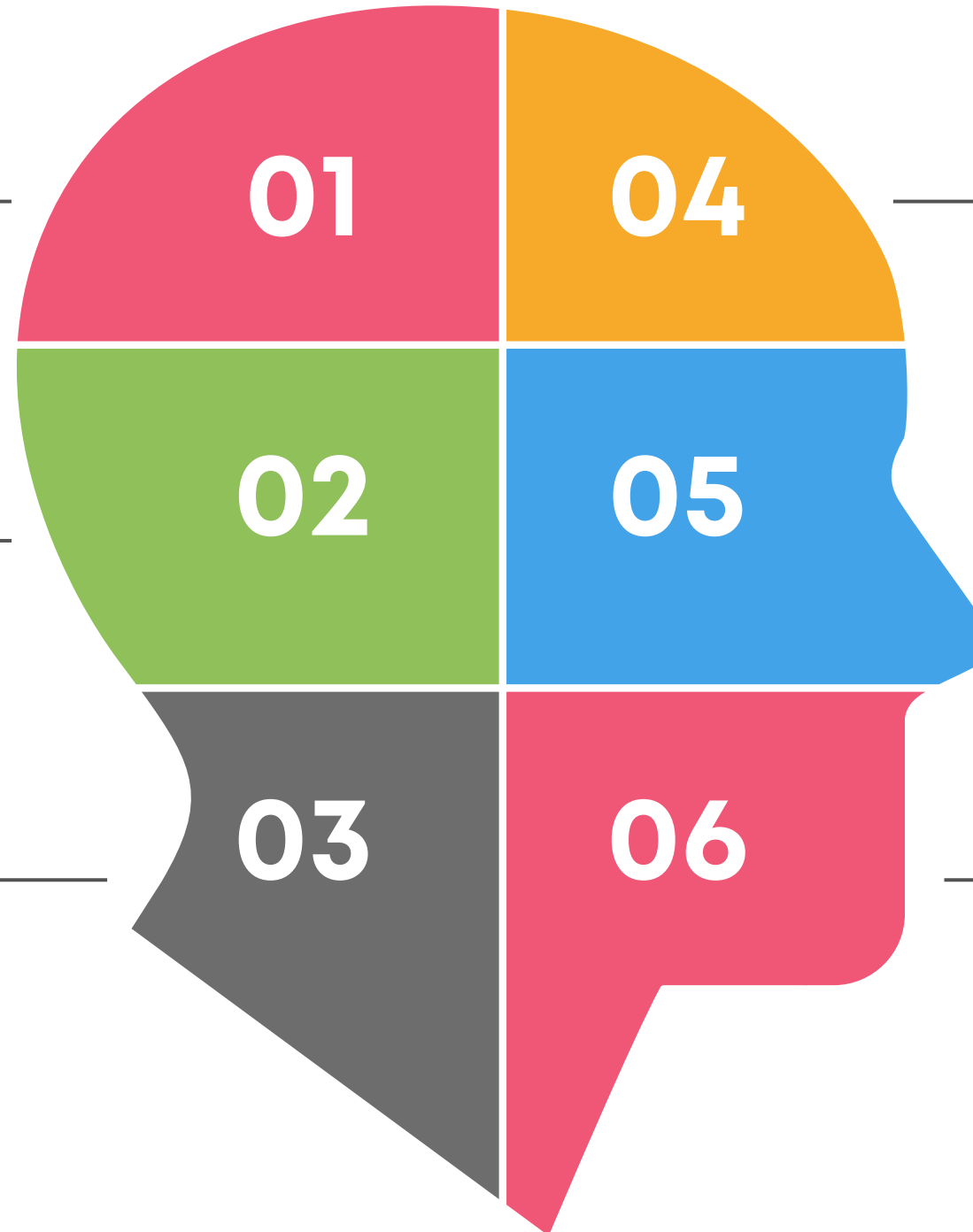


03

06



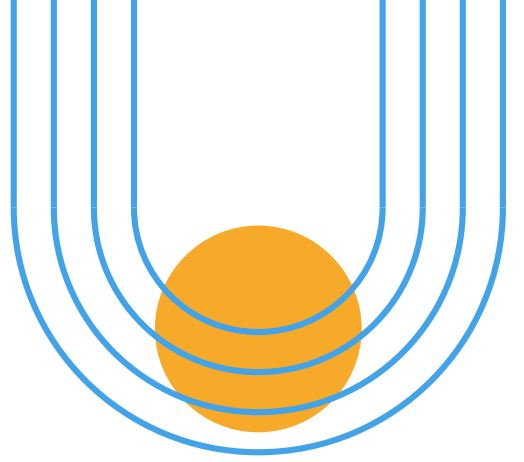
Special talents or  
abilities



## Cross-Sector Essential Employability Skills

- Teamwork & Conflict Resolution
- Communication
- Problem Solving
- Decision Making
- Critical Thinking
- Adaptability & Flexibility
- Initiative & Self Drive
- Reliability & Accountability
- Cultural Competence
- Planning & Organizing
- Principles of Entrepreneurship
- Innovation & Invention
- Growth Mindset

# FUTURE-ORIENTED STATE MANDATES



PaCE Framework

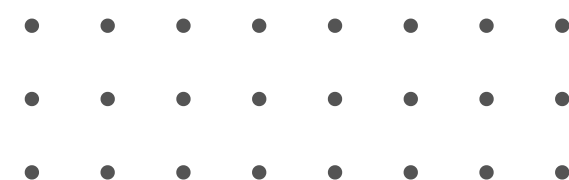


Graduation  
Requirements. Also  
known as Academic  
Readiness

College and Career  
Readiness Indicators



College and Career  
Pathway  
Endorsements



# PROFILE OF A GRADUATE

- Combines multiple requirements set by Illinois
- Establishes focused categories to help students develop key characteristics that will help them reach their unlimited potential.
- Identifies what others can expect from those who graduate from Harlem.
- Puts the students at the center of setting their own goals.
- Provides a framework about how to develop in each category.
- Provides common language amongst all stakeholders.

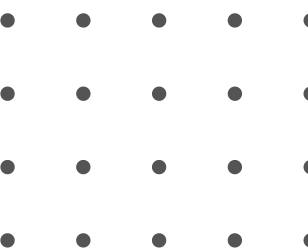
Worked with NIU Edsystems to develop categories

Research process and partnerships

Get feedback through all stakeholders via survey.

Use committee of stakeholders to review data.

Create graphic representation



# COMMITTEE OF STAKEHOLDERS

## Students:

- Layla Burns
- Melina Coletta
- Amelia Ledford
- Jaylah Listenbee
- Corbyn Phillips
- Asiah Pierce
- Brilliance Tarver

## Parents:

- Melissa Burns
- Scott Heidemann
- Jennifer Shelby

## Educators:

- Sarah Anderson
- Nikole Behling
- Jason Blume
- Jeremy Bois
- Jeff Cismesia
- Michelle Erb
- Jeanine Ferger
- Melissa Hagerman
- Margaret Sholl

## Business Partners:

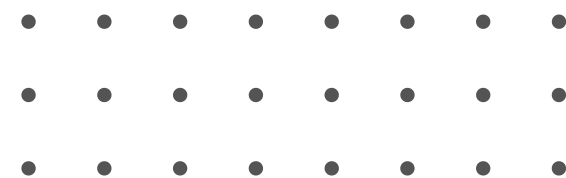
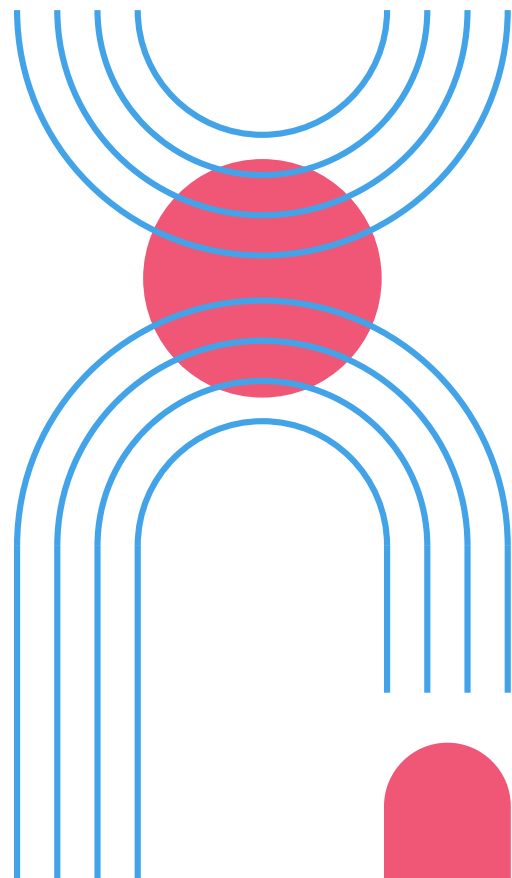
- Renee Austin
- Sarah Boreen
- Makayla Janeway
- Darlyne Keller

## Alumni:

- Jeff Jacobson
- Lexi Riley

## Other Community Partners:

- Tabatha Dougherty
- Cindi Tobin
- Rockford University





# FROM THE STAKEHOLDERS



Watch on  YouTube

# PROFILE OF A GRADUATE



## HARLEM HIGH SCHOOL



### Embrace Diversity

A student who actively seeks out and values different perspectives, backgrounds, and experiences and demonstrates empathy, mutual respect, and a commitment to inclusivity.

- Conflict Resolution
- Empathy
- Cultural Competence
- Integrity
- Respect for Others
- Open-mindedness
- Curiosity



### Innovative

A student who thinks creatively and actively seeks solutions through imaginative approaches.

- Critical Thinking
- Creativity
- Initiative
- Open-mindedness
- Ambitious
- Confidence
- Growth Mindset



### Collaborator

A student who actively works with others, respects diverse perspectives, contributes effectively to the group, and strives to achieve common goals.

- Communication
- Teamwork
- Flexible
- Accountability
- Open Mindedness
- Reliability
- Respect for Others
- Attentive



### Lifelong Learner

A student who continuously learns and adapts throughout their life, actively seeks new knowledge and skills beyond formal education, and demonstrates curiosity.

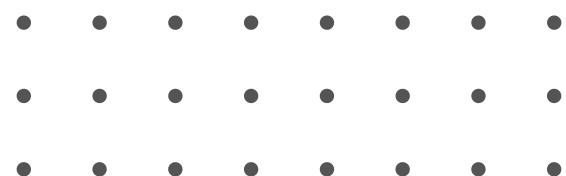
- Curiosity
- Accountability
- Planning and Organization
- Growth Mindset
- Self Awareness
- Ambitious



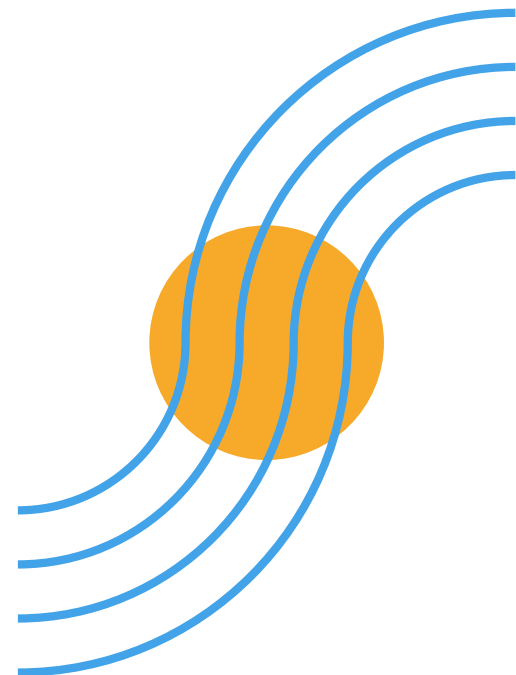
### Resilience

A student who exemplifies resilience, recovers from setbacks, adapts to change, and perseveres through challenges.

- Planning
- Adaptability
- Growth Mindset
- Perseverance
- Critical Thinking
- Disciplined



# PROFILE OF A GRADUATE GRAPHIC



# Next Steps

Incorporate the Profile of a Graduate (PoG) into Xello Platform

Present the PoG and the roll out plan to building principals.

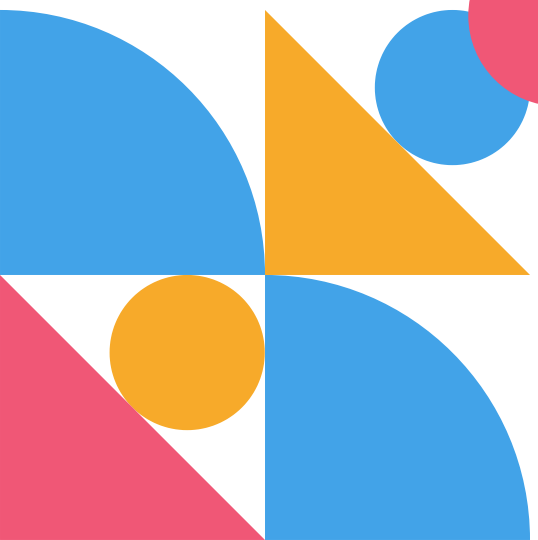
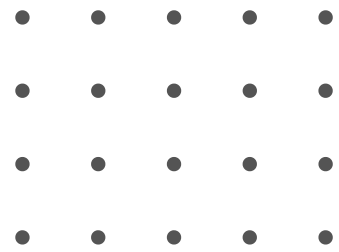
Have graphics made for each building.

Share with staff through *Inside 122* and other stakeholders through *Around 122*.

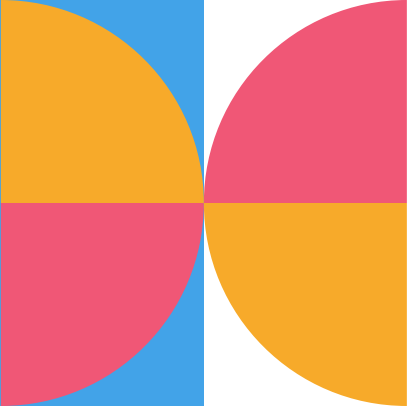
Have HHS and HMS share video and introduce PoG on “Back to School” nights.

Provide formal introduction and expectations to staff during 8/14 Institute.

Introduce PoG to students in advisories at HMS and HHS.



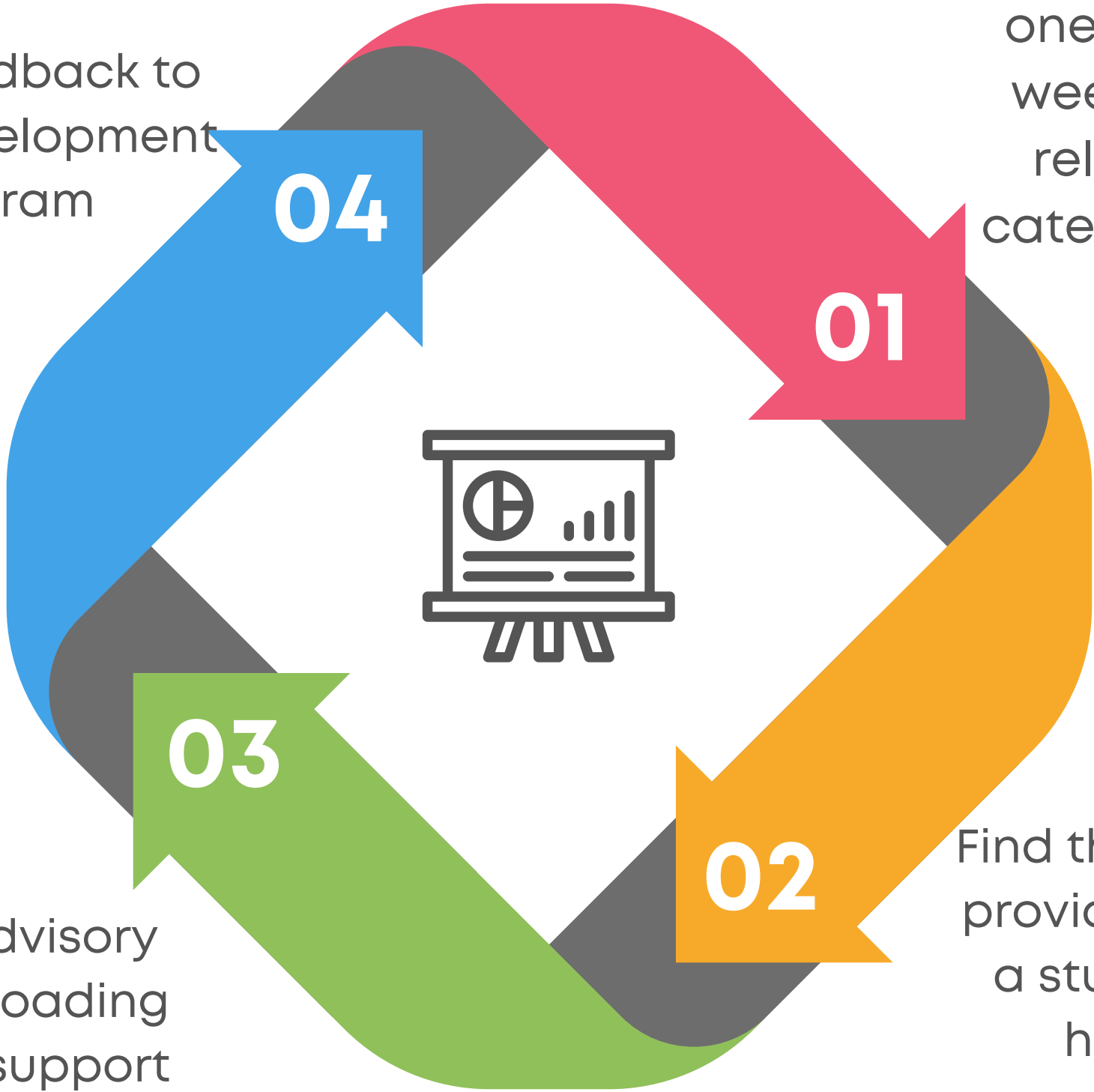




# SOFT ROLLOUT FOCUSED ON AWARENESS AND USE OF TOOLS TO TRACK PROGRESS.

Provide feedback to  
support development  
of program

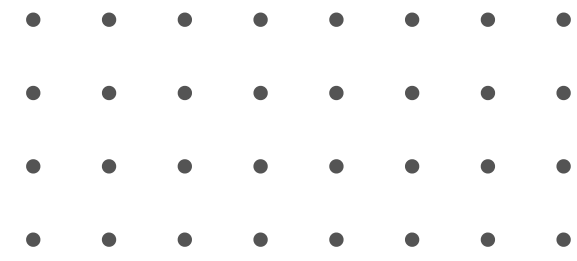
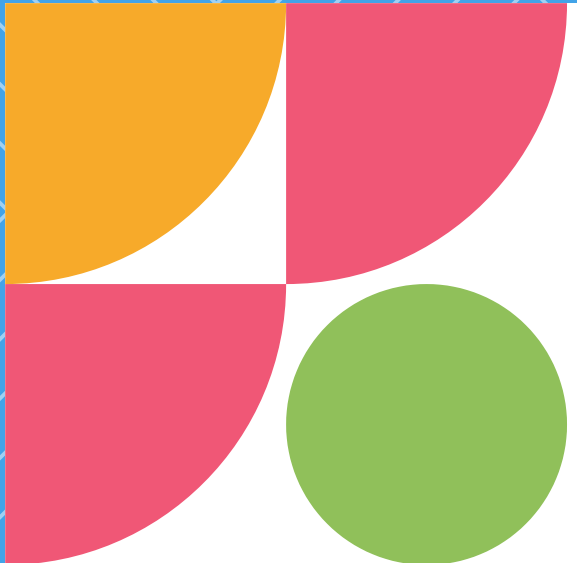
Recognize how  
one activity a  
week in class  
relates to a  
category of the  
PoG



Check on advisory  
students uploading  
artifacts to support  
how they are  
developing in the  
aspects of PoG

Find three ways to  
provide praise for  
a student(s) for  
how they  
exemplify an  
aspects of the PoG

- • • • •
- • • • •
- • • • •



QUESTIONS



THANK  
YOU

