



February Board Report

Principals:

January went by too fast! Students and staff have been busy completing federal, state, and district testing requirements. We have also spent an ample amount of time supporting students and families that are transitioning to remote learning. In addition to normal day-to-day requirements, teacher evaluations will soon be due, so we have been busy completing these also. Planning for 'I Love to Read' month also started in January.

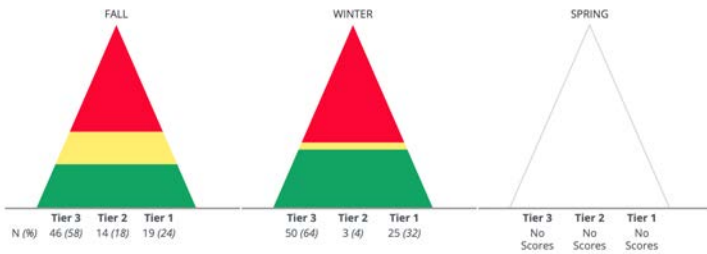


Aimsweb Data:

We have almost completed our winter benchmark testing and so far the results are showing student growth in both math and ELA. Our testing pool is smaller this testing, as we have had fewer students on campus to test due to illness. At the February Board meeting that is hosted at Napi, data on specific intervention groups will be presented.

Fall to Winter ELA--4th Grade

ool, Grade 4, Reading, '21-22



Transition Details

Fall to Winter Transition				Winter to Spring Transition				Fall to Spring Transition			
Fall	Winter Tier for Fall Students			Winter	Spring Tier for Winter Students			Fall	Spring Tier for Fall Students		
Tier N (%)	Red	Yellow	Green	Tier N (%)	Red	Yellow	Green	Tier N (%)	Red	Yellow	Green
46 (58)	35		4	50 (64)				0 (0)			
14 (18)	3	1	8	3 (4)				0 (0)			
19 (24)	3	1	11	25 (32)				0 (0)			
	79	41	23		78				0		

Fall to Winter Math--4th Grade

ool, Grade 4, Math, '21-22

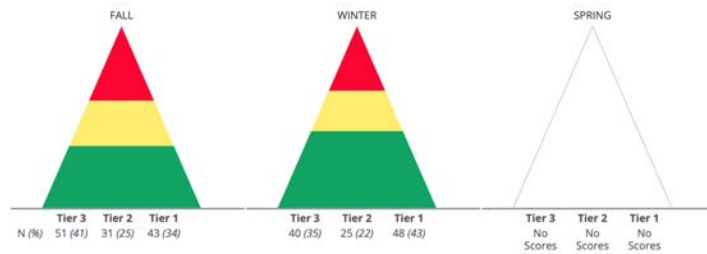


Transition Details

Fall to Winter Transition				Winter to Spring Transition				Fall to Spring Transition			
Fall	Winter Tier for Fall Students			Winter	Spring Tier for Winter Students			Fall	Spring Tier for Fall Students		
Tier N (%)	Red	Yellow	Green	Tier N (%)	Red	Yellow	Green	Tier N (%)	Red	Yellow	Green
69 (80)	47	8	3	57 (71)				0 (0)			
14 (16)	5	2	4	12 (15)				0 (0)			
3 (4)			3	11 (14)				0 (0)			
	86	52	10	80					0		

Fall to Winter ELA--5th Grade

ool, Grade 5, Reading, '21-22

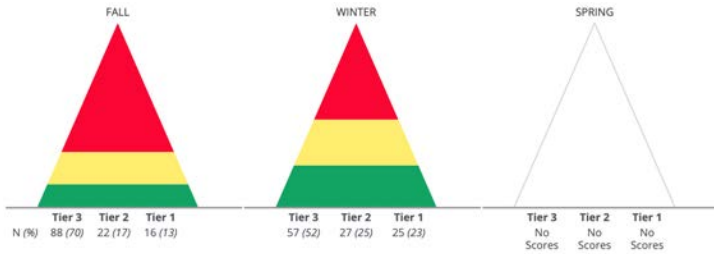


Transition Details

Fall to Winter Transition				Winter to Spring Transition				Fall to Spring Transition			
Fall	Winter Tier for Fall Students			Winter	Spring Tier for Winter Students			Fall	Spring Tier for Fall Students		
Tier N (%)	Red	Yellow	Green	Tier N (%)	Red	Yellow	Green	Tier N (%)	Red	Yellow	Green
51 (41)	35	7	5	40 (35)				0 (0)			
31 (25)	3	13	12	25 (22)				0 (0)			
43 (34)	1	4	31	48 (43)				0 (0)			
	125	39	48	113					0		

Fall to Winter Math--5th Grade

ool, Grade 5, Math, '21-22

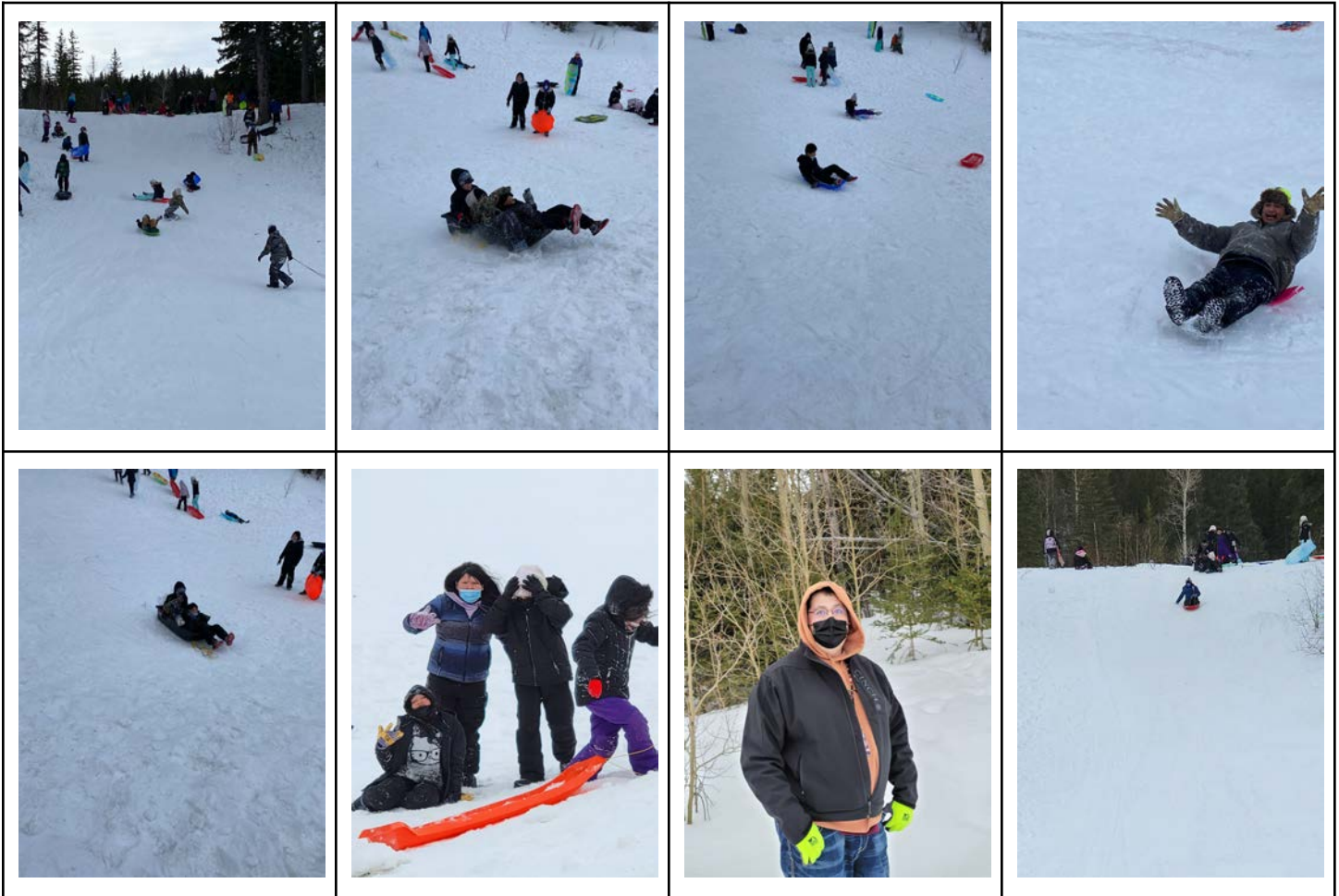


Transition Details

Fall to Winter Transition				Winter to Spring Transition				Fall to Spring Transition			
Fall	Winter Tier for Fall Students			Winter	Spring Tier for Winter Students			Fall	Spring Tier for Fall Students		
Tier N (%)	Red	Yellow	Green	Tier N (%)	Red	Yellow	Green	Tier N (%)	Red	Yellow	Green
88 (70)	49	18	7	57 (52)				0 (0)			
22 (17)	6	4	9	27 (25)				0 (0)			
16 (13)	1	4	8	25 (23)				0 (0)			
	126	56	24	109					0		

5th Grade Sledding Activity

Friday, January 28th, the 5th-grade team and their students spent the morning sledding at Red Eagle. Both reported they had a blast and enjoyed spending time outside together! It helped that it was also a beautiful and fairly warm day with just a breeze. All 5th grade students were welcomed and encouraged to participate in this activity!



BCC Presentation:

On Friday, January 21st, BCC Staff coordinated with Napi's Specialists Team to host a cultural presentation for our students to educate our students on the history of the Baker River Massacre. A huge thank you to John Gilham and John Murray for taking the time to provide our students with this opportunity to learn about their history. Students were welcomed to ask any questions and teachers reported that students were very engaged during presentations.



Students attending Character Education with Mr. Andreas, join the Google Meet to participate in presentations sponsored by Blackfeet Community College.

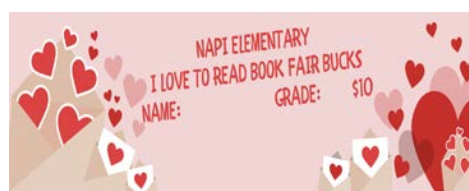
Family Literacy Night:

On January 20th, Napi's SLT team hosted Family Night. Students and parents were invited to come and make a personalized snow globe! Families were greeted at the door by our wonderful student helpers: Morning Star, Ryia, and Tessley, and along with Mr. Bryant and Mr. Neverez. Students were able to select a couple of books to add to their home libraries. Students had their pictures taken by Mrs. Bird and laminated by Ms. MadMan. Students then were ready to proceed into Mrs. Wagner's classroom to begin selecting items to build their snow globes with. Mrs. Wagner and Ms. StillSmoking assisted students to build and complete their snowglobes. Overall, 41 snow globes were made. We hope this activity provides an example of an easy and fun activity that families can do at home!



Book Fair

Starting on February 1st, students will be invited to attend the “I Love To Read” Book Fair, which is hosted by Napi Elementary Instructional Coaches, Mrs. Wagner and Mrs. Bragg. Both of these ladies have dedicated time to order in some exciting literature and other book fair gadgets that kids love. Each student will be given a book fair token worth \$20.00. They will be able to use their token to purchase four books/book sets to read throughout the month of February! We are super excited to be able to offer this event to our students! The coaches would like to send a huge shout-out and THANK YOU to Jocko Parrent and Rebecca Rappold for their donation of books to our book fair as well!



I Love to Read Month:

In addition to the book fair event, two other awesome Napi Team Members are promoting a friendly grade level challenge to promote reading. Mrs. HeavyRunner and Ms. Kujala has created Students heart-shaped book reports that students will complete and then post on the front office bulletin board. They created the book reports using sentence stems, which is an ELL strategy and used to help students practice writing complete sentences. We will announce the winner in our next board report!

FEBRUARY

I Love to Read

When: February 1-28, 2022

What: Napi's friendly reading competition in each grade. The classroom with the most hearts at the end of the month wins a pizza party per grade.

How: Students can read at school when they finish assignments early, lunch, and at home. For every 20 minutes read with a summarization of the story students earn a heart. Also, a completed chapter book earns an additional heart.

Attendance:

(102) 4th Grade: 61% ADA

(130) 5th Grade: 65% ADA

Principals and counselors have conducted home visits this month and will continue to reach out to parents and students to re-engage with their school community.

Instructional Coaches: (Mrs. Bragg and Mrs. Wagner)

The coaches continued to provide ongoing assistance in structured lesson planning. Both coaches helped revise and develop a checklist to assist in a second layer of lesson planning. Mrs. Wagner participated in her yearly formal observation in coaching a new teacher and modeled how coaching cycles occur, documentation, and how data is collected. Both coaches were busy ensuring that all WIDA assessments were completed and have spent the majority of their time pulling students together to administer these important assessments. Family literacy night was hosted by Napi's SLT, in which both coaches are members and provided a snow globe making activity. This activity was such a hit that we ran out of materials. We are in the process of planning another fun activity that is similar. Well over 30 families participated! The coaches met with Debbie Hunsaker, our literacy consultant during a virtual meet and updated the Continuous Improvement Cycle plan and looked at Aimsweb data. We will continue to monitor the goal setting process with staff and students. Together, both coaches have 7 active coaching cycles occurring. We are in the planning stages of our upcoming I Love to Read month activities, so stay tuned!

Counseling Department: (Mr. Andreas)

January has been a busy month in the Napi Counseling Center. I have been assisting with WIDA Testing, conducting home visits to support attendance goals, providing individual counseling as needed, and teaching two classes daily so that all students in grades 4 and 5 receive social emotional instruction as part of the specials class rotation. Students who meet the McKinnie definition as homeless receive weekend food weekly and all students have access to the clothing closet and hygiene products as necessary. Students of the month are in the process of being selected and will be recognized in the Glacier Reporter and celebrated in the building.

Spokinaapi Program: (Mrs. Wells)

January has been another month of adjustment to the ongoing coronavirus, due to the number of positive cases increasing in the community the attendance slightly decreased. Despite having some sporadic absences with students and staff the Napi team adapted impressively. Applause to the administrators and staff for maintaining the functionality of the school and distributing school work to the remote learners.

Napi students started taking Cornell notes during their specials and have shown great interest and effort during the Spokinaapi timeframe. Students have also completed Lesson 7 from the Too Good for Drugs Curriculum. Lesson 7 focused on Peer-Pressure refusal strategies and identifying the difference between positive and negative peer pressure.

Spokinaapi continues to support student's social and emotional needs by providing a safe space for them to talk, take 5, and or learn some self-regulation skills. Students also have the option to play in the Spokinaapi office during their lunch recess. There are different stations throughout to maintain a sense of social distancing.

