

Welcome

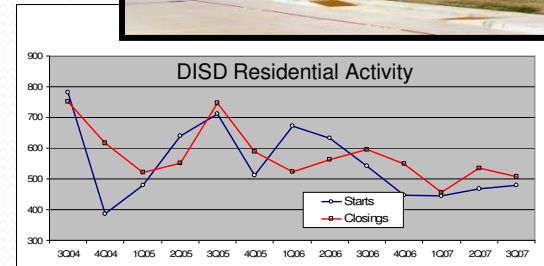
Welcome



Today's Vision....

*Tomorrow's
Reality*

*Planning for Our
Future Growth*



Denton Independent School District

**Proposed
2010-11**

**Elementary School
Re-zoning Plan**

Dr. Roger Rutherford Asst. Superintendent Elementary Programs
Gene Holloway, Director of Transportation
Mr. Rod Reeves, Facilities Coordinator





DISD – 180 Sq. Miles
Fast Growth
School District

Campuses:

- *Elementary – 20 (1-2010)
- *Middle School – 6 (1-2011)
- *High School – 4 (1-2012)
- *Advanced Tech. Ctr. – 1
- *Early Child Ed. Ctr. – 1 (1-2010)
- *Alternative Ed. Program – 1

Projected Student Growth

Year	Students
2006-07	19,800
2007-08	20,723
2008-09	22,200
2009-10	23,300
2010-11	24,600
2011-12	25,900
2012-13	27,400
2013-14	28,900
2014-15	30,400
2015-16	31,500
2016-17	33,400
2017-18	34,900

35,000+ Students by 2020

Residential Activity
Historical

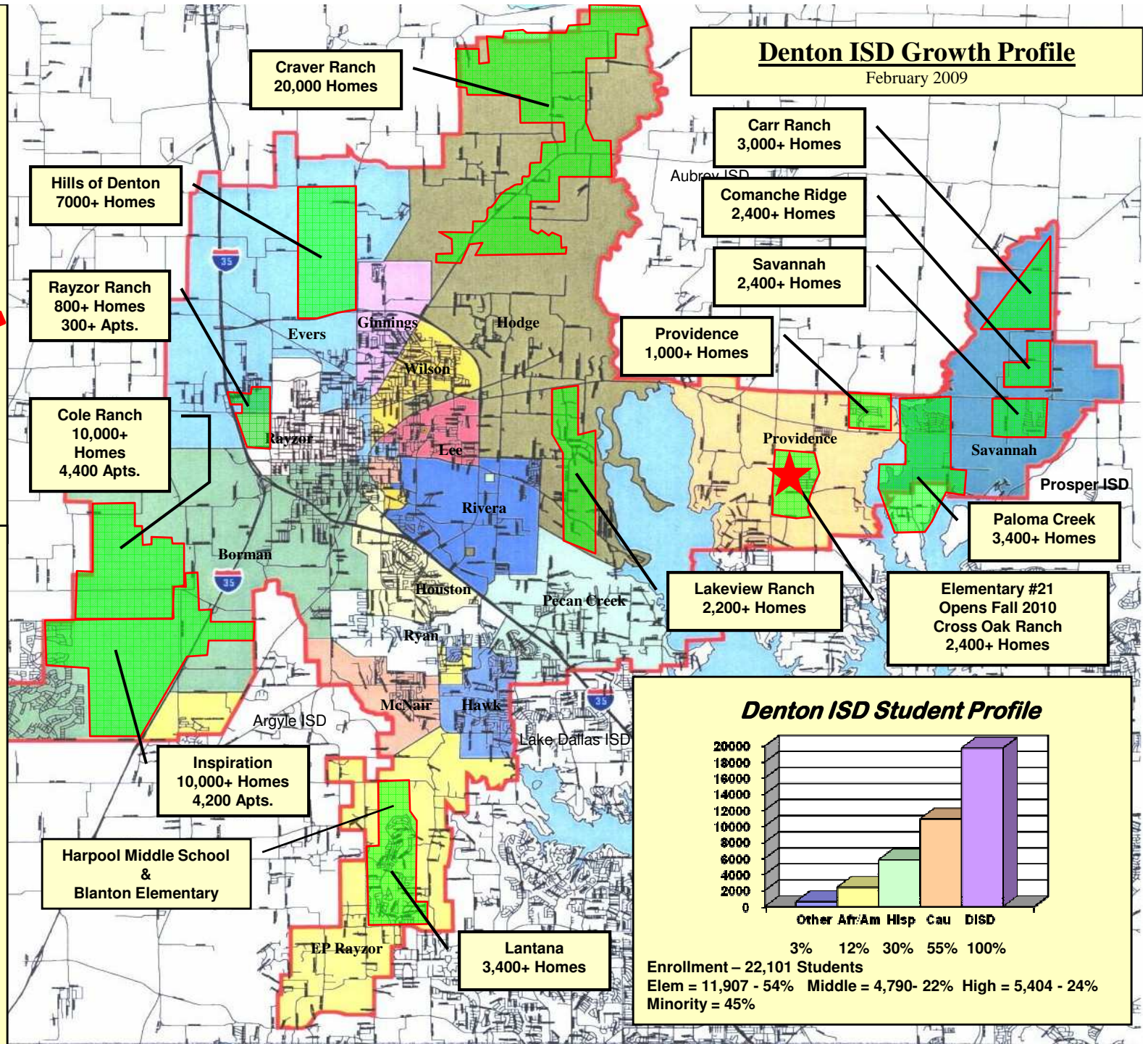
Year	Starts	Close
2000 -	1366	1324
2001 -	1565	1499
2002 -	1714	1740
2003 -	2304	2022
2004 -	2583	2516
2005 -	2342	2405
2006 -	2297	2232
2007 -	1703	1982
2008 -	1307	1464

Projected New Home Starts

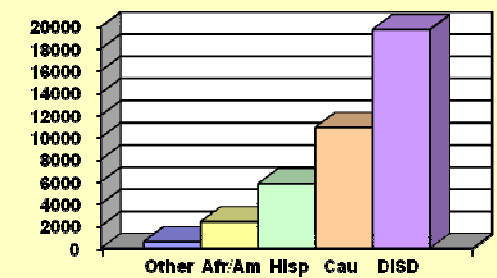
Year	Starts
2009 -	1200
2010 -	1500
2011 -	1900
2012 -	2000
2013 -	2000
2014 -	2200
2015 -	2200
2016 -	2500
2017 -	2500
2018 -	2500

Total 20,500+ Homes

70,000 Homes = 35+ Years



Denton ISD Student Profile



Enrollment – 22,101 Students
 Elem = 11,907 - 54% Middle = 4,790- 22% High = 5,404 - 24%
 Minority = 45%



Providence
420 acres
Developer – Huffines
1,000 single-family



Paloma Creek
1,400 acres
Developer – Provident
3,400 single-family



Savannah
800 acres
Developer – Huffines
2,400 single-family



Cross Oak Ranch
750 acres
Developer – M/Atlantis
2,400 single-family



2009-10 Providence Elementary Boundary

Current Enrollment
745 Students

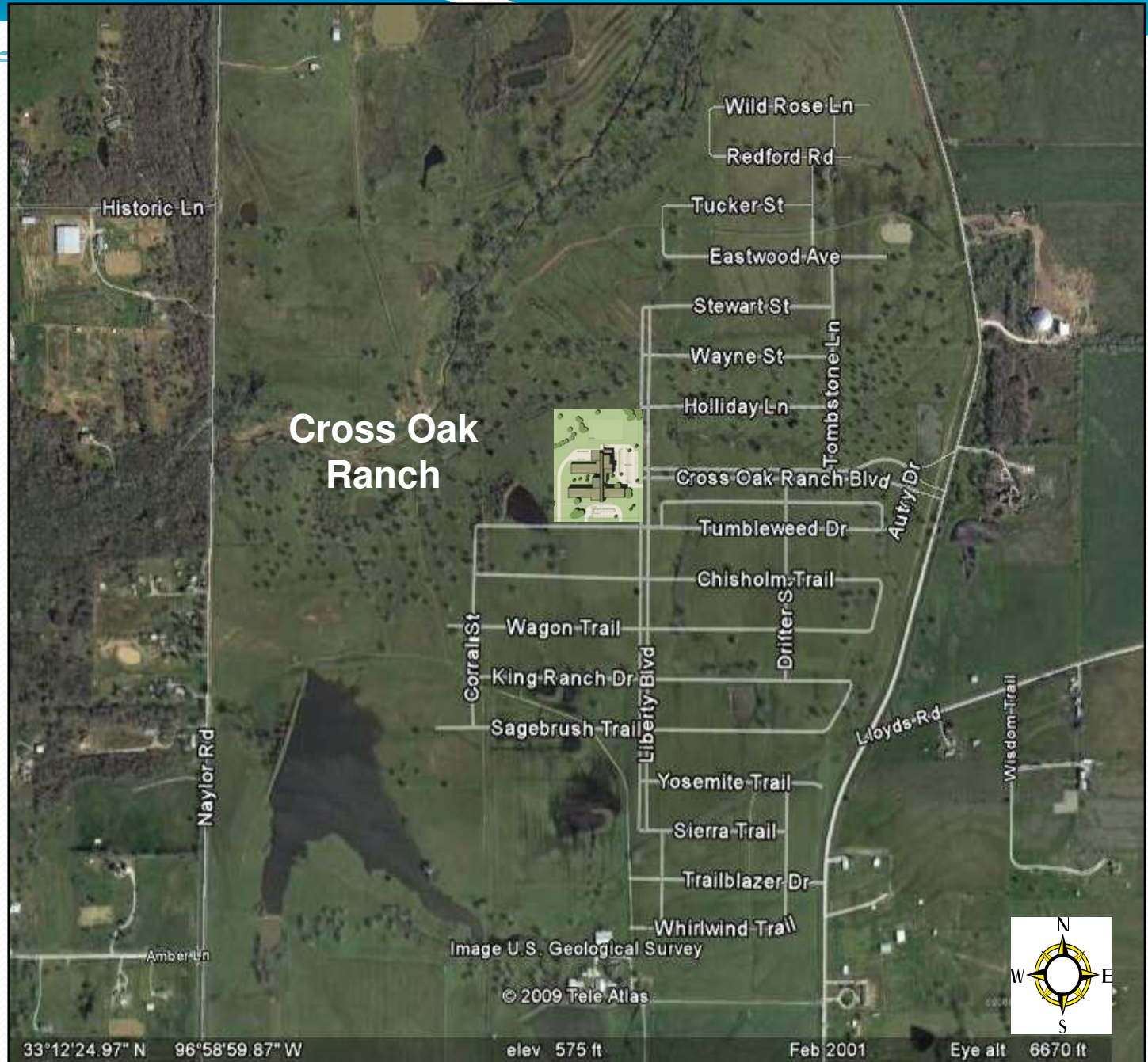
2010-11 Enrollment
871+ Student





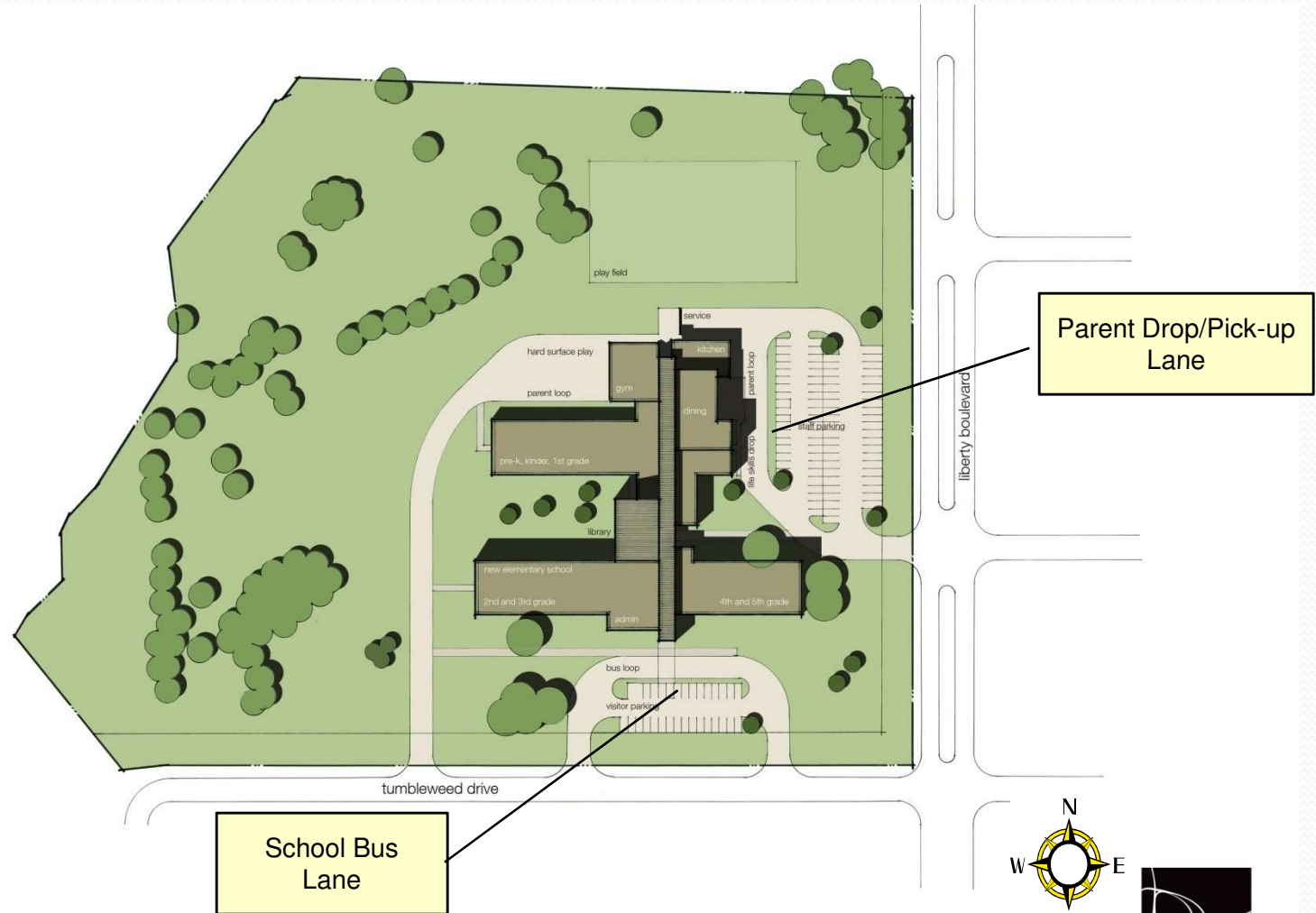
Elementary #21 School Site

Campus
Opens
2010-11

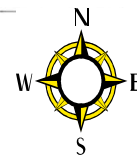




Elementary #21 Site Plan



denton isd - new elementary school #21 - cross oak ranch site
shw group

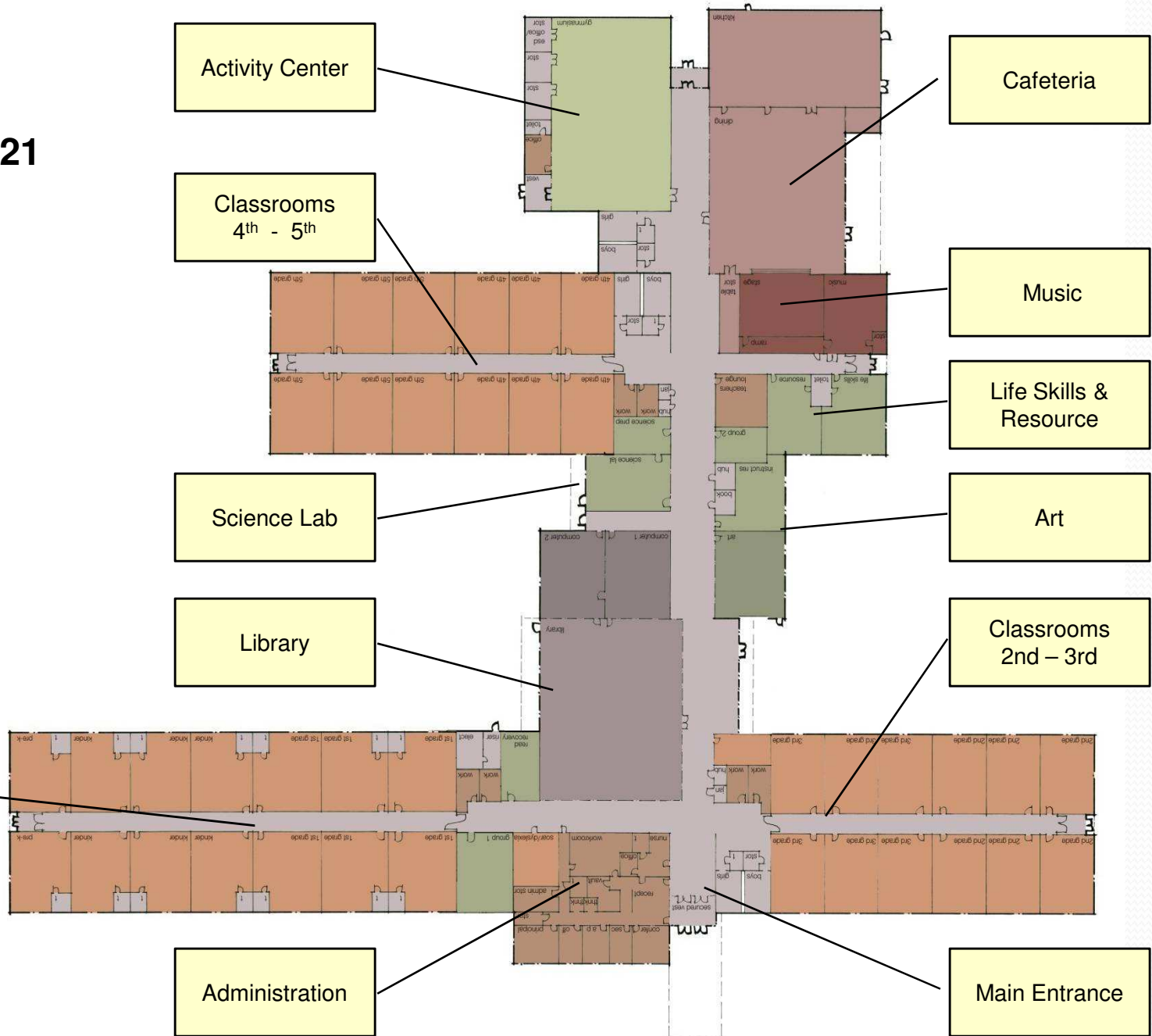


scale 1:60





Elementary #21 Floor Plan



Activity Center

Cafeteria

Classrooms
4th - 5th

Music

Life Skills &
Resource

Science Lab

Art

Library

Classrooms
2nd - 3rd

Classrooms
PK - 1st

Administration

Main Entrance



Elementary #21 South View to Main Entrance





Elementary #21 East View to Outside Learning & Nature Area

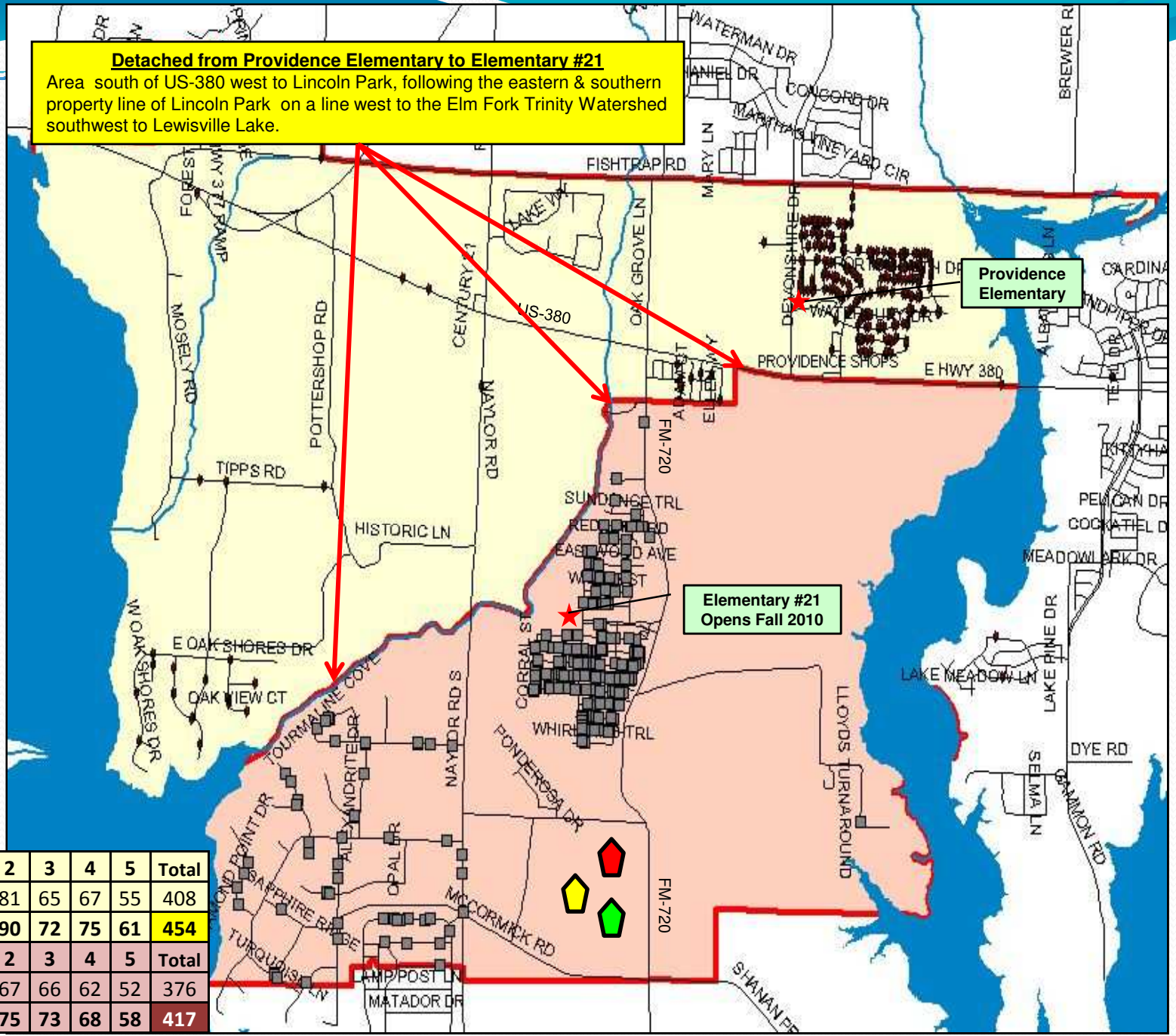




Preliminary Proposed 2010-11 Elementary Rezoning Plan Option #1

Growth @ 5% Annually

Detached from Providence Elementary to Elementary #21
 Area south of US-380 west to Lincoln Park, following the eastern & southern property line of Lincoln Park on a line west to the Elm Fork Trinity Watershed southwest to Lewisville Lake.



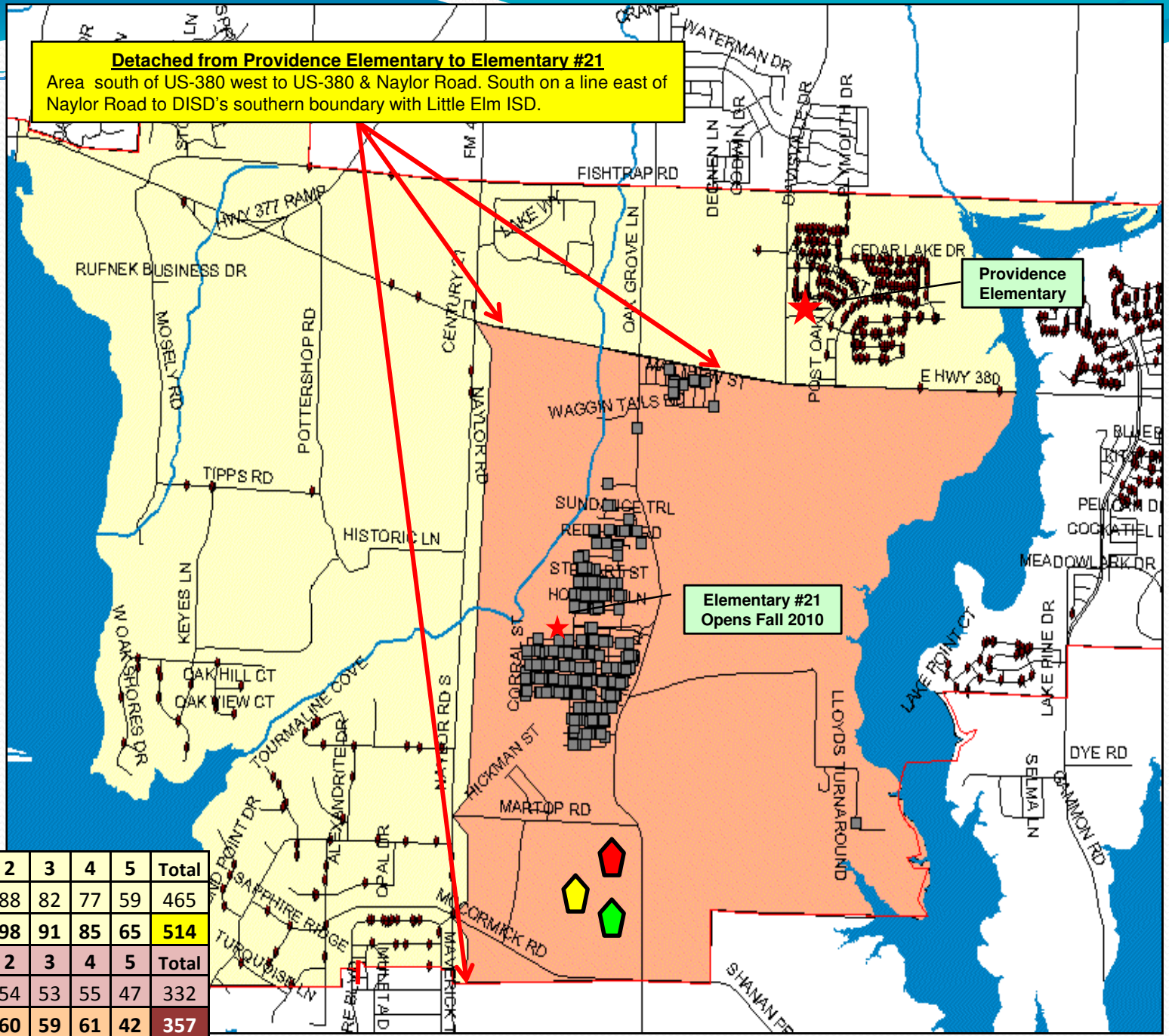
Providence	KG	1	2	3	4	5	Total
2008-09	66	74	81	65	67	55	408
2010-11	74	82	90	72	75	61	454
Elementary #21	KG	1	2	3	4	5	Total
2008-09	63	66	67	66	62	52	376
2010-11	69	74	75	73	68	58	417



Proposed 2010-11 Elementary Rezoning Plan Option #2

Growth @ 5% Annually

Detached from Providence Elementary to Elementary #21
 Area south of US-380 west to US-380 & Naylor Road. South on a line east of Naylor Road to DISD's southern boundary with Little Elm ISD.



Providence	KG	1	2	3	4	5	Total
2008-09	78	81	88	82	77	59	465
2010-11	86	89	98	91	85	65	514
Elementary #21	KG	1	2	3	4	5	Total
2008-09	61	62	54	53	55	47	332
2010-11	67	68	60	59	61	42	357



Denton Independent School District 2010-11 Attendance & Transportation Guidelines



Fourth grade students re-zoned to a new campus in 2010-11 will be allowed to complete the fifth grade at Providence Elementary. All other request for student transfer will be governed by DISD's regular transfer policy. In both cases, parents will be responsible for transportation.



Texas Education School Code #42.155 & DISD Policy CNA (Legal) governs student eligibility for transportation services: Students must reside 2 miles or more from their home campus to qualify for transportation services. The distance is measured between home and school by the most direct route that may be traveled on public roads (private roads excluded).