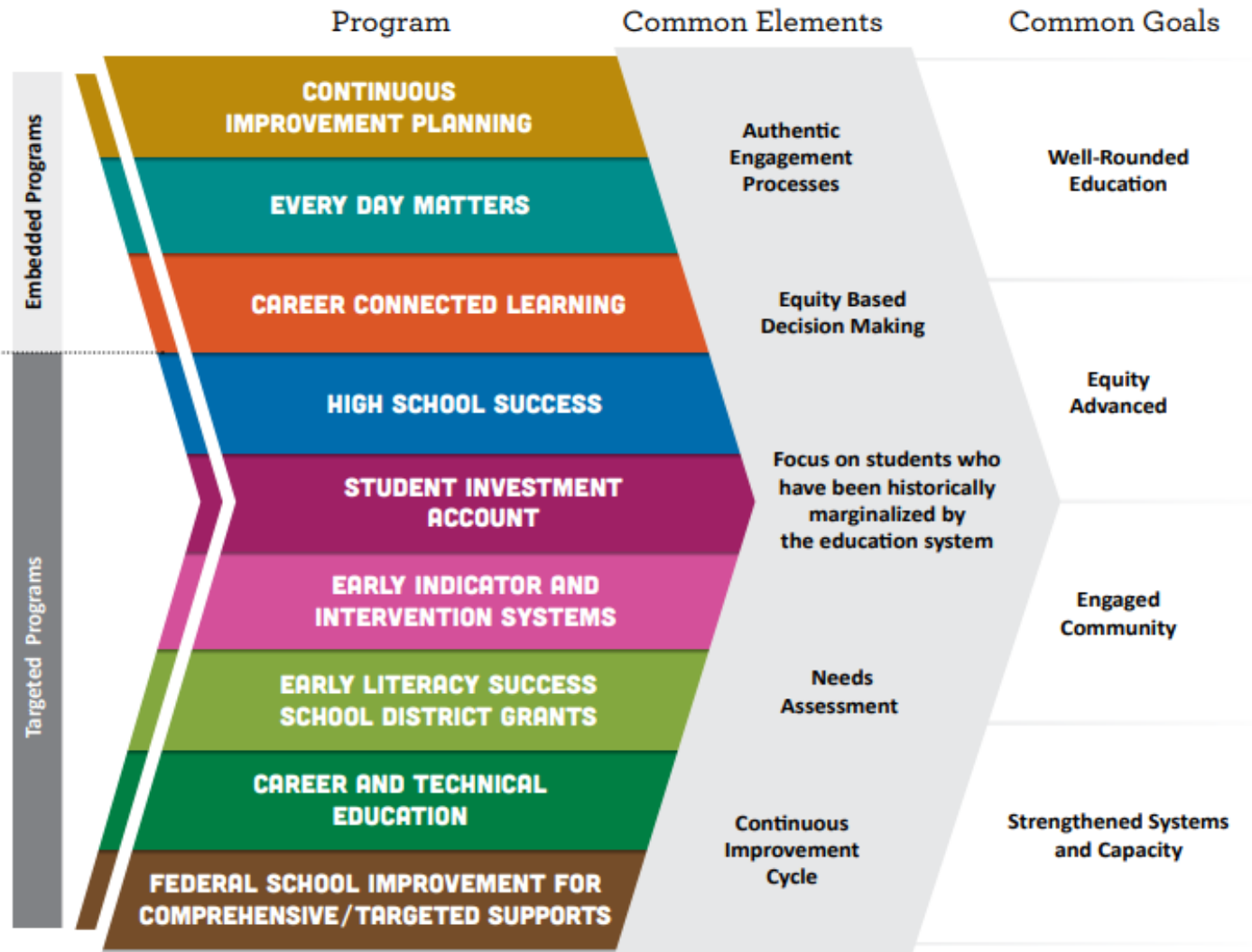




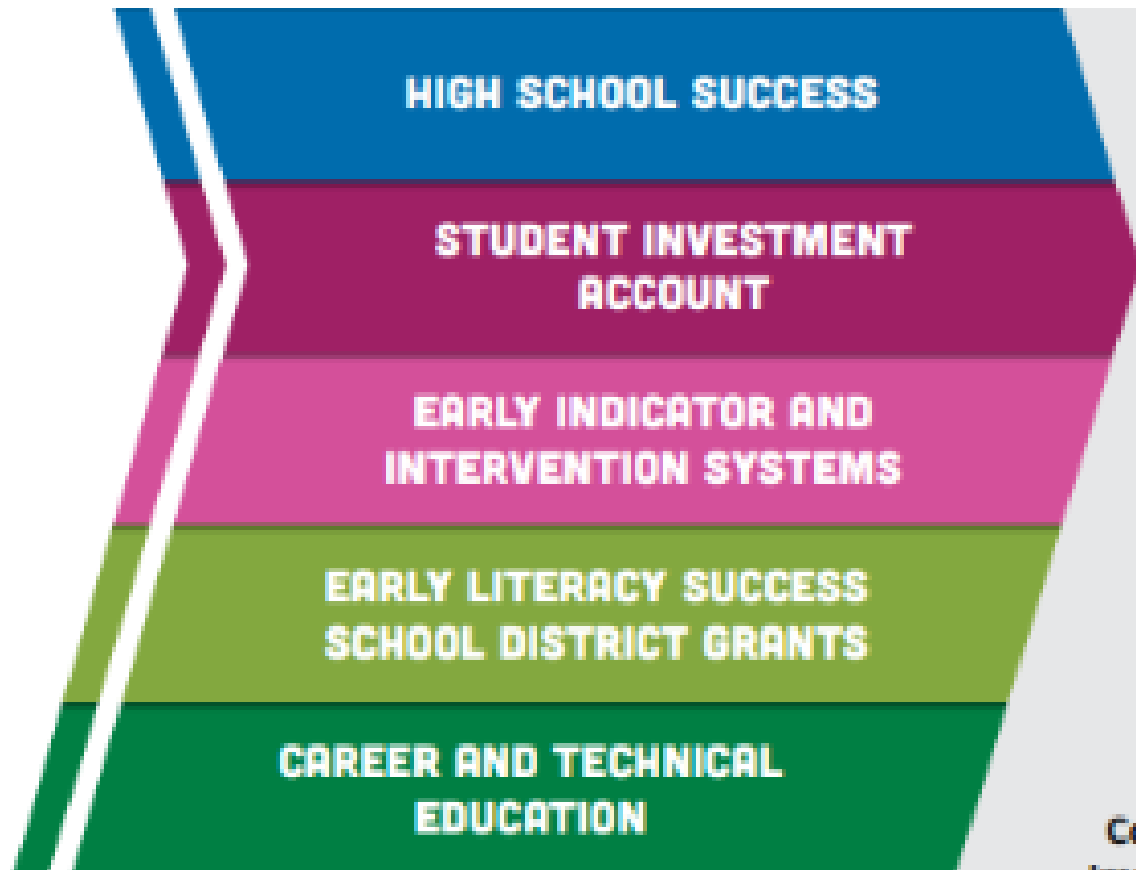


# Integrated Plan Elements








# Integrated Plan Elements





# High School Success - 4 Goals

- 9th Grade Ontrack- 4x more likely to graduate
  - 67%  79%
  - DHS Behavior Room
- Increase High School Graduation Rates
  - 76%  82.2%
  - DHS Behavior Room
- Increase equitable access to advanced coursework
  - Dual enrollment with UCC 27  33
- Improve readiness for college or career
  - 5 full CTE Programs



## Student Investment Account - 2 Goals

- Meet Student's Mental Health or Behavioral needs
  - Additional Counselor and Child Development Specialists
  - Additional Service Providers
  - Additional PE at Elementary Level
- Increase Academic Achievements for students
  - Pre-K Teachers & IA's
  - DAHS Math Instructor
  - SEL Curriculum



# Early Indicator and Intervention System

- An EIIIS is essential to the success of other integrated program goals, including HSS 9th grade ontrack, supporting mental health and addressing chronic absenteeism.
  - Center for High School Success
    - 6th - 11th grade success teams
    - Relational Trust inventories
    - Effective analysis of data
    - IRRE student results. (48 - 67)



## Early Literacy Success - 4 Goals

- Increase early literacy for children from birth to third grade.
- Reduce literacy academic disparities for student groups that have historically experienced gaps in performance.
- Increase support to parents and families to develop their children's literacy skills.
- Increase access to early literacy learning opportunities.

Results to be presented in May.



# Career and Technical Education - 3 Goals

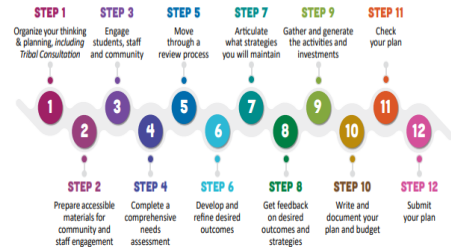
- Integrate Career Connected Learning more systemically.
  - Alignment of WMS electives with DHS CTE programs of study.
- Increase equitable access and inclusion in high quality CTE and career connected learning activities.
  - Remove barriers to participation
- Expand transparency and the voices contributing to our career preparation system.
  - Maintain authentic connections with industry/ advisory



# Planning For The Future: Authentic Engagement

Short Term	Integrated Plan 1 year with update for second year.
Intermediate Term	Continuous Improvement plan 2 integrated plan cycles - State monitored.
Long Term	Strategic plan - 2 + CIP cycles - monitored by the School District/ Board

# Planning For The Future: Authentic Engagement

Year	Target Product	Process/ measurements
2025	Strategic Plan 2026- 2033 (8 yrs) CIP (4yrs) Integrated Plan (2 Yrs)	<p>A 12-Step Guide to Efficient and Effective Program Integration</p>  <ul style="list-style-type: none"> <li>● 5 common elements</li> <li>● <b>Student Involvement (Pro-start, FFA, Skills USA, Robotics, Athletics, NHS, other metrics of student life)</b></li> <li>● OSAS</li> </ul>
2027	Mid CIP Review (Integrated Budget Application)	
2029	CIP Rewrite, Mid Strategic Plan review, Integrated Budget application	
2031	Mid CIP Review (Integrated Budget Application)	
2033	Strategic Plan 2034- 2042 (8 yrs) CIP (4yrs) Integrated Plan (2 Yrs)	