

**New Fairfield Public Schools  
Notification of Field Trip**

Consolidated       Meeting House       Middle School       High School

Today's Date: 9/5/19

Teacher in charge: Kimberly Salta

Destination: Panama

Date of Trip: April 10-18, 2021 +/-2 days

Location (city/state): International, Panama

Specific Group or class attending: Sophomores/Juniors/Seniors

Number of students: 12-18

Type of transportation: Airplane and ground transport to/from airport

# of students per bus: 12-18

# of buses required: 1 to airport

Cost per person: \$2,985 plus ground transportation to airport

Time of Departure: TBD

Time of Return: TBD

Explanation of cost: The cost of the trip covers airfare, meals, hotels, all transportation costs within Panama, a full time bi-lingual tour director, all entrances and activities.

Names of faculty chaperone(s):

Names of non-faculty chaperone(s):

Kimberly Salta			
Brian Moffitt			
TBD (if 18 students register)			

**RECEIVED**

**SEP - 6 2019**

SUPERINTENDENT OF SCHOOLS

Brief description of the educational purpose of the trip and its connection to the district/school mission statement: The tour is designed to provide global settings to sharpen key 21st century skills - critical thinking, problem solving, communication, collaboration and global competence - as well as help students to develop interpersonal and leadership skills necessary to navigate new experiences with confidence and adaptability. Students may also earn 3 college credits through SNHU for an additional \$215 and completion of online coursework.

Signature of teacher in charge: *Kimberly Salta*

Date: 9/5/19

Adm. Approved: *[Signature]*

Date: 9/6/19

Supt. Approved: *[Signature]*

Date: \_\_\_\_\_

**Instructions:**

- Complete and submit this form for administrative approval at least two weeks prior to the date of the trip.
- Send home Field Trip Permission Slip after all approvals on this notification are granted.
- Collect monies for any field trip only after the signed parental permission form (attached) for each student going on the trip has been returned.

- Follow all school requirements for office/registrar/nurse notification regarding field trips.
- Adhere to state law regarding occupancy number for buses. Please check with the bus company you choose regarding the number of students allowed.

rev. 10/15

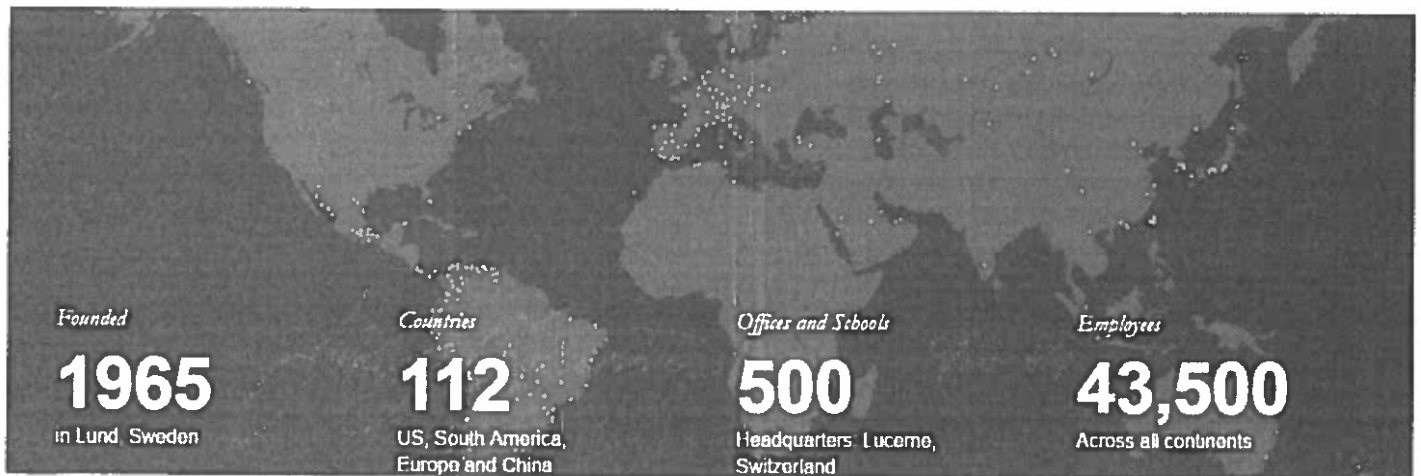


## *Educational Tours*

# GLOBAL EDUCATION PROGRAM 2020-2021

*Discover Panama*

Prepared for: Kimberly Salta  
New Fairfield High School  
September 4, 2019



## *Your partner in global education*

As the **World Leader in International Education**, we've partnered with educators around the world for over 50 years to help students gain new perspectives and build skills for the future through experiential learning. We provide a range of travel programs—Educational Tours, Language Immersion Tours, Service Learning Tours, Global Student Leaders Summits and Custom-Designed Tours—that help prepare students for the future by teaching them more about the world, themselves, and their place in the world. Combining the power of experiential learning with the thrill of global travel, our tours help students:

- Expand their knowledge of the world around them
- Understand new people, places, and cultures
- Discover more about themselves
- Grow more confident and independent

When students grow in these ways, they become more curious, more open-minded, and more excited about the future.

---

## *What we'll cover in this document*

We've created this document specifically for you, your school and your students. It outlines the details of your proposed tour and the life-changing experiential learning opportunities that await your students.

<b>PAGE</b>	
1	Your partner in global education
2	EF History and reach
3-4	Our commitment to education; credit opportunities
5	Our commitment to safety
6	We'll handle the details
7	A day-by-day look at your tour
8	What your hotels will be like
9	What your meals will be like
10	Price details
11	Important final details

This proposal is property of EF Education First and the educator/school for which it was intended. Distributing, copying and/or sharing it are prohibited. The proposal, including pricing, is valid for the educator, tour and date(s) specifically mentioned herein. For additions, subtractions or modifications, please contact your EF Tour Consultant.

© 2018 EF Education First. For full terms and conditions visit [eftours.com/bc](http://eftours.com/bc).

## *EF's History*

### **Fifty Years of Experience**

For over 50 years, we've proudly partnered with educators to transform the way students look at the world—and themselves. That passion has grown our family-owned company into the world leader in international education with more than 1 million students experiencing our programs every year.

### **Our Mission**

Opening the World Through Education

Educational Tours is only a small part of EF. **EF is the largest educational organization that includes schools, programs, and partnerships** such as:

- **Language schools and courses all around the world**
  - EF is the Official Language Supplier of the Language Training for the Olympic and Paralympic Games
  - The 2016 EF EPI is the world's largest ranking of English skills, featuring ranking and analysis of 72 countries and territories.
- **Undergraduate, MBA, and Executive Education**
  - Hult International Business Schools
- **EF Academy International Boarding Schools – USA, United Kingdom**
- **EF Gap Year**
- **Academic Year Abroad**
- **High School Exchange**
- **The EF Research Network**
  - The EF Research Network consists of top universities that are working with EF to fundamentally improve the way students learn languages. The network covers a broad range of disciplines from linguistics, pedagogy, educational technology, and language assessment to cultural immersion.
- **The EF Global Classroom Foundation – Nepal**
  - This foundation has helped rebuild an elementary school in one of the areas most affected by the earthquake



CELEBRATING FIFTY YEARS

## *Our commitment to education*

We believe the best way to help students gain new perspectives and build skills for the future is through experiential learning.

### **Accreditation**

EF is accredited, just like your school, and recognized by the following regional, national and international organizations: Middle States Association of Colleges and Schools (MSA-CES); Western Association of Schools and Colleges (WASC); Southern Association of Colleges and Schools (SACS-CASI) North Central Association (NCA-CASI); National Council for Private Schools Accreditation (NCPSA); and Accreditation International (AI).

### **A standard of excellence**

Our educational travel programs bring to life the knowledge and skills that are called for in many education initiatives, including:

- Partnership for 21<sup>st</sup> Century Skills (P21)
- International Baccalaureate – PYP, MYP, Diploma, IBCC
- Common Core State Standards for English Language Arts and Literacy in History/Social Studies, Science and Technical Subjects
- Global Competence Criteria—defined by the Asia Society and Council of Chief State School Officers
- Global Connection Standards in the National Curriculum Standards for Social Studies
- Culture and Connections Standards in the Standards for Foreign Language Learning
- Standards of Professional Learning—defined by Learning Forward

### **weShare: Personalized Learning**

Every tour comes with weShare, a personalized learning experience powered by students' curiosity. Using EF's guided learning model, students use their strengths to investigate an issue or topic that inspires them. They reflect on what they've learned through a post-tour project that gives even more meaning to travel—and can earn them academic credit.

### **Earning credit**

Students can earn credit by traveling on an EF tour and completing required coursework. We offer choices, so you can find the credit option that best fits you and your students' needs.

- Students in grades 6-12 can earn high school credit with weShare, EF's personalized learning experience, by developing an essential question to investigate on tour and creating a post-tour project. Successful course completion will earn students 0.5 elective high school credits.
- Students in grades 9-12 can earn university credit by completing a series of assignments and a final research project with EF's university partner, Southern New Hampshire University. Successful course completion will earn students 3.0 university credits.

### **Accredited by:**





**For students**

**1. High school credit**

**COURSEWORK** Students can earn high school credit with weShare, EF's personalized learning experience, by developing an essential question to investigate on tour and creating a post-tour project.

**ELIGIBILITY** U.S. students in grades 6–12 taking an EF tour are eligible for credit.

**CREDIT** Successful course completion will earn students 0.5 elective high school credits. After submitting their projects, students can email [education.department@ef.com](mailto:education.department@ef.com) for their transcripts.

**COST** Tuition is free and there are no fees.

**DEADLINE** Students must enroll no later than 7 days before leaving for tour.

**LEARN MORE** Visit [eftours.com/weShare](http://eftours.com/weShare).

**REGISTER** Contact our Customer Service team at 800-885-5364 to enroll in weShare.

**2. Undergraduate-level college credit**

**COURSEWORK** Students can earn college credit by completing a series of assignments and a final research project with EF's university partner, Southern New Hampshire University.

**ELIGIBILITY** U.S. students in grades 9–12 taking an EF tour are eligible for credit.

**CREDIT** Successful course completion will earn students 3.0 university credits.

**COST** Tuition is \$215 for all tours departing before September 2020.

**DEADLINE** Students must enroll no later than 21 days before leaving for tour.

**LEARN MORE** Email [education.department@ef.com](mailto:education.department@ef.com) with questions.

**REGISTER** Visit [eftours.com/anhustudent](http://eftours.com/anhustudent) to register for your course. You must already be enrolled on tour.

**For educators**

**1. Professional learning hours/points**

**COURSEWORK** Educators can earn professional learning hours/points through experiential learning research, reflection, and unit planning.

**ELIGIBILITY** All educators traveling on an EF tour are eligible to enroll.

**CREDIT** Successful course completion will earn educators 45 professional learning hours/points.

**COST** Tuition is free and there are no fees.

**DEADLINE** Educators must enroll no later than 7 days before leaving for tour.

**LEARN MORE** Email [education.department@ef.com](mailto:education.department@ef.com) with questions or to get started.

*EF also offers Professional Learning Tours for educators. Visit [pd.eftours.com](http://pd.eftours.com) to learn more.*

**2. Graduate-level university credit**

**COURSEWORK** Educators can earn graduate-level university credit through research, travel, and reflection with EF's university partner, Southern New Hampshire University.

**ELIGIBILITY** All educators traveling on an EF tour are eligible to enroll.

**CREDIT** Successful course completion will earn educators 3.0 or 6.0 graduate-level university credits.

**COST** Tuition is \$285 per 3.0 credit course and \$450 per 6.0 credit course.

**DEADLINE** Educators must enroll no later than 21 days before leaving for tour.

**LEARN MORE** Email [education.department@ef.com](mailto:education.department@ef.com) with questions.

**REGISTER** Visit [eftours.com/anhueducator](http://eftours.com/anhueducator) to register for your course. You must already be enrolled on tour.

## *Our commitment to safety*

Our demonstrated commitment to safety and risk management is proven with our preventative procedures and extensive measures taken to ensure each traveler's safety.

### **Worldwide presence**

As the largest international student travel organization, we have 500 schools and offices in more than 50 countries worldwide. With 37,000 EF staff and teachers around the globe, we're accessible wherever and whenever you need us.

### **Global Liability Insurance Plan**

- All EF Group Leaders are covered for the duration of their EF educational tour.
- EF's Commercial General Liability Insurance is provided by nationally recognized insurance companies with A.M. Best Ratings of A-.
- Group Leaders and their schools are covered by our \$50 million liability policy and customer payments are protected by a \$1 million customer protection plan.
- EF's Global Liability Insurance Plan allows for schools and districts to be added to the policy by written agreement. EF can provide a certificate of insurance that details coverage.

### **Global Travel Protection Plan**

Designed specifically with EF travelers in mind, teachers may add this comprehensive and affordable protection plan to their tours.

### **EF's Peace of Mind Program**

We understand that plans can change due to unforeseen circumstances. EF provides an exclusive Peace of Mind program to account for such situations. This program is automatically included for all travelers and can be enacted at the group level for any reason, including terrorism or other world events. Your Group Leader may choose from the following options:

#### *45 days or more prior to departure*

- Change the travel dates of your group's current tour
- Work with EF to modify your group's current tour or find a new tour
- Cancel your tour and all travelers will receive a transferrable travel voucher

#### *44 days or less prior to departure*

If any location(s) included in the group's tour itinerary is designated as a Travel Advisory Level 3 or 4 by the U.S. Department of State, your Group Leader may still choose any option from the section above.

### **Highly respected in the industry by:**





## *We'll handle the details*

As your educational travel partner, we work with teachers, students and parents to ensure a seamless experience—before, during and after tour. In other words, we're with you every step of the way.

### **BEFORE TOUR**

#### **Support Team and resources**

Dedicated Tour Consultants guide teachers through the planning process, while Local Representatives from your area work face-to-face to provide support. We give teachers their own personal tour website with helpful tools to share tour information, manage deadlines and more. In addition to online resources, we also provide an array of printed materials for teacher, students and parents.

#### **International Training Tours**

Ensuring teachers are fully prepared to lead an EF tour is our commitment to your school community. Through our blended learning model, all first-time EF Group Leaders receive complimentary international training. Conducted by EF personnel and experienced EF Group Leaders, the program includes online, classroom and experiential learning components. In the event a Group Leader cannot attend one of these complimentary tours, we offer live webinars to prepare them and answer questions before they travel.

#### **Traveler account management**

Our knowledgeable and friendly Customer Service Representatives help travelers and their parents with all billing transactions, protection plans and tour activity questions. We also offer flexible and convenient payment options that allow parents to choose when—and how—they want to pay.

---

### **WHILE ON TOUR**

#### **Everything is included**

This all-inclusive global experience makes it easy for teachers and students to explore the world. From flights and hotels to most meals and experiential activities, we take care of every detail so travelers can focus on the experience.

#### **Guided travel**

A personal bilingual Tour Director stays with your group 24/7. They handle every on-tour detail to ensure a smooth travel experience while also providing unique local insight. Expert local guides, meanwhile, share their knowledge of history, art, architecture and more during guided tours.

---

### **AFTER TOUR**

#### **Program development**

We'll work with you to build a travel program at your school so even more students have the opportunity to experience the world.

## *A day-by-day look at your tour*

This is the itinerary page that students and parents will see in their tour itinerary guide. It's just one of the many resources they'll receive in preparation for your tour.

### **Day 1: Fly to Panama**

- Meet your Tour Director at the airport in Panama City, where you'll explore Panama's cultural, financial, and political capital; a bustling metropolis nestled between the Pacific Ocean and a tropical rainforest.

### **Day 2: Panama City**

- Visit the Panamá Viejo ruins and museum.
- Take a tour of Panama City. Visit the city's historic district, which dates back to 1519 when Panamá Viejo, or Old Panama, was the first Spanish city founded on the Pacific Coast of the Americas. In 1671, Governor Juan Pérez de Guzmán set the city on fire before the pirate Henry Morgan could attack and loot it. Remnants are now part of a UNESCO World Heritage Site along with Casco Viejo, which was built on the rubble in the 17th century. Admire the residence of Panama's president before browsing an arts and crafts market.
- Visit the Biomuseo.
- Take some free time on the Amador Causeway to enjoy the Panama City skyline.

### **Day 3: Panama City | El Valle de Antón**

- Travel on the Pan-American Highway.
- Visit a local pineapple farm.
- Explore hiking trails in El Valle de Antón.
- Enjoy a folklore dance show.

### **Day 4: Panama City | Gatun Lake**

- Enjoy a hike in one of the parks that surround Panama City.
- Take a boat tour of Gatun Lake and see Monkey Island.

### **Day 5: Panama City**

- Participate in a local exchange in Panama City.
- Visit the Panama Canal Administration Building.
- Visit the Miraflores Visitor Center and take an in-depth look at the Panama Canal, one of the most influential engineering projects ever undertaken and one of the seven wonders of the modern world. Completed by the United States in 1914, the 51-mile canal not only revolutionized international trade by bridging the Atlantic and Pacific oceans, it also signaled America's emergence as a global superpower. Learn about this modern marvel—including how 22,000 workers lost their lives during its 34-year construction—and see it in action at its Pacific entrance.
- Travel to your hotel via Ancón Hill.

### **Day 6: Panama City**

- Visit Chagres National Park. Located just 30 minutes outside of Panama City, this national park was established in 1985 to protect the Rio Chagres watershed, the primary source of water for the Panama Canal.
- Enjoy a canoe ride on the Rio Chagres, home to otters, caimans, and crocodiles, as you make your way to the upper reaches of Lake Alajuela.
- Visit an Emberá indigenous village. Learn about the culture and customs of the Emberá people during your visit to a village on the banks of Lake Alajuela in Chagres National Park. Discover the Emberá's traditional dances and music, as well as their knowledge of local plants.

### **Day 7: Panama City | Portobelo**

- Experience a snorkeling adventure.
- Visit the Portobelo Ruins.

### **Day 8: Depart for home**

## **o 3-DAY TOUR EXTENSION**

### **Day 8: Panama City | Cartagena**

- Fly to Cartagena, Colombia.
- Take a walking tour of Cartagena.

### **Day 9: Cartagena**

- Take a guided tour of historic Cartagena. Visit the Convento de la Popa and San Felipe de Barajas Castle with an expert local guide.
- Spend the afternoon exploring the more modern Bocagrande neighborhood.

### **Day 10: Cartagena | Barú Island**

- Take a day trip to the beach at Barú Island.
- Relax and reflect with your fellow travelers, and enjoy lunch on the beach.
- Enjoy a dinner experience that includes traditional music or dancing.

### **Day 11: Depart for home**

## *What your hotels will be like*

A good night's sleep is important, so you can count on safe, clean and comfortable hotels with private bathrooms. Every hotel we work with is required to meet our high standards for quality, safety and cleanliness. Three to four students of the same gender will share a room, which will have a combination of twin and shared double beds. Please be aware that hotels may have different amenities than you find in American hotels.

### **HERE ARE EXAMPLES OF THE TYPES OF HOTELS YOU'LL STAY AT ON TOUR:**

#### **Panama City**



##### **Holiday Inn Express Panama Distrito Financiero**

Calle Ricardo Arango & Calle 53E

[www.ihg.com/holidayinnexpress/hotels/us/en/panama/pcyex](http://www.ihg.com/holidayinnexpress/hotels/us/en/panama/pcyex)

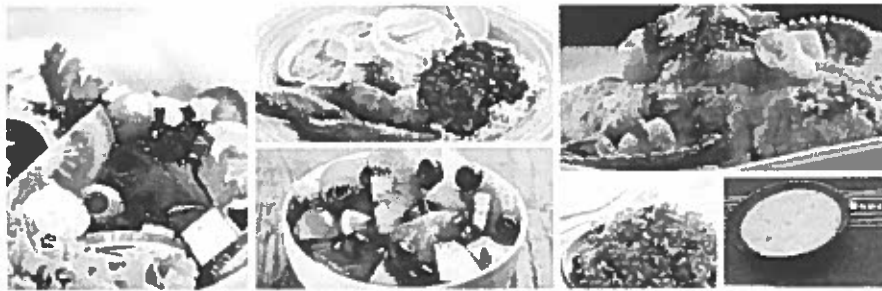
The Holiday Inn Express Panama Distrito Financiero is located in the heart of Panama City's business area, offering travelers both convenience and comfort. Each room has a television, private bathroom, and air conditioning. Enjoy access to the hotel's fitness center and panoramic outdoor pool, and take advantage of complimentary Wi-Fi in the lounge area.

## *What your meals will be like*

These are examples of the types of meals you and your students will be served on tour.

# Sample Menus: Latin America

Discovering new foods can be one of the best parts of traveling. The sample menus below are just a few examples of the types of traditional, local favorites you will have the opportunity to try on tour. Every meal will include table water (or bottled water if deemed necessary by locals) and you can usually buy other beverages if you wish. All meals are served as a group—not à la carte—and a vegetarian option will be available if requested in advance. Please notify EF of any other dietary restrictions or food allergies you may have. Enjoy!



### **BELIZE**

Fish tacos  
Caramel Flan

### **COSTA RICA**

Lunch and dinner  
Rice and beans  
Chicken/meat or sandwich  
Salad  
Fresh fruit juices

### **DOMINICAN REPUBLIC**

Rice and beans  
Chicken/meat  
Stew  
Plantains

### **ECUADOR**

Soup  
Roasted chicken with rice  
and vegetables  
Fresh fruit

### **GALÁPAGOS**

Lunch and dinner  
Buffet with fish, chicken, rice,  
pasta, salad and fresh fruit

### **PERU**

Soup  
Salad  
Chicken with fries  
Fresh fruit

### **PANAMA**

Rice and beans  
Pizza  
Hamburgers  
Fried fish

## Price details

In addition to the support you receive before and after tour, along with the logistical support you receive on tour, your guaranteed lowest price covers all of the details.

# Tour Price Quote

## Discover Panama

Prepared For  
Kimberly Salts

Prepared On  
August 27, 2019

Your Tour Number  
2286466XS

Your Tour Website  
www.efcours.com/2286466XS

### Guaranteed Lowest Price

Price valid for travelers enrolled September 1, 2019 - September 30, 2019\*

Student	Adult
<b>\$2,985</b>	<b>\$3,435</b>
or \$151 / 18 mos	or \$189 / 18 mos

#### Price Breakdown

Program Price	\$2,820
Global Travel Protection	\$165
weShare – Personalized Learning	FREE

\*Adult supplement required for travelers age 20 and older at the time of travel. Change and cancellation fees of up to the total price will apply. Applicable airline baggage fees are not included and can be found at [efcours.com/baggage](http://efcours.com/baggage). All prices subject to verification by an EF Tour Consultant. Program price validity excludes special discounts. To view EF's Booking Conditions, visit [efcours.com/bc](http://efcours.com/bc).

## Your travel details

Total Length  
8 days

Departing From  
New York, NY area (inc. Newark, NJ)

Requested Travel Dates  
Saturday, April 10, 2021 - Saturday, April 17, 2021

#### Your Departure Date Range

Earliest  
Thu, Apr 8

Requested  
Sat, Apr 10

Latest  
Mon, Apr 12



## Your experience includes

#### An All-Inclusive Tour

Round-trip airfare, hotels with private baths, regional-style meals, on-tour transportation and sightseeing activities are covered. Discover all of your itinerary details at [www.efcours.com/2286466XS](http://www.efcours.com/2286466XS).

#### Full-time Tour Director

Your culturally connected Tour Director is with your group 24/7, providing deep local insight while handling all on-tour logistics.

#### Expert Local Guides

Your expert local guides are natural historians, adding cultural insight and global perspective on your sightseeing tours.

#### weShare—Personalized Learning

Our personalized learning experience engages students before, during and after tour, with the option to create a final, reflective project for academic credit.

#### Continuous Support

Your dedicated EF team helps you every step of the way—from recruiting and enrolling travelers to planning and managing your tour.

#### Worldwide Presence

EF has over 500 schools and offices in more than 50 countries worldwide so wherever you go, we're there too.

#### 24-hour Emergency Service

Travelers and their families can count on EF's dedicated emergency service team.

#### Peace of Mind Program

Feel secure knowing your group can change their destination or travel dates due to unforeseen circumstances. Learn more about your flexible options at [efcours.com/peaceofmind](http://efcours.com/peaceofmind).

## *Important final details*

### **The EF Price Guarantee**

We're dedicated to making travel accessible to as many students as possible. Our unmatched global presence and longstanding relationship with airlines and hotels ensure you will always give your students the best experience at the lowest price, guaranteed.

What it means for you:

- The guaranteed lowest price—if you find a similar tour for less, we'll beat it.
- One simple price—no enrollment or departure fees.
- Once a student enrolls, their price will never change.

I hope you've found this document useful. As your EF Representative, I'm here to answer any questions that you may have. Please don't hesitate to contact me with any questions.

Sincerely,

**Corinne Bozzini**  
Educational Tour Consultant – CT  
617-619-2450  
[Corinne.Bozzini@EF.com](mailto:Corinne.Bozzini@EF.com)