



## NORTH SLOPE BOROUGH SCHOOL DISTRICT MEMORANDUM

**TO:** John Hopson, Jr., President  
Members of the Board

**THROUGH:** David Vadiveloo, Superintendent *Dsv*

**THROUGH:** Caitlin Santos, Director of Curriculum & Instruction *Caitlin Santos*

**FROM:** Ranel Gandia, Student Records Manager *RG*  
Ian Acuna, Data Manager *IA*

**DATE:** April 1, 2025

**SUBJECT:** Enrollment and Attendance Report

**Memo No. SB25-023**  
(Information Item)

### NSBSD Policy Manual:

BP 5111, Admission: The School Board believes that all children should have the opportunity to receive a free appropriate public education. Staff shall encourage parents/guardians to enroll all school-aged children in school.

BP 5112, Attendance and Exceptions: NSBSD is committed to the academic success of all students. Consistent attendance is the first step in assisting students to achieve academic success.

### NSBSD Strategic Plan Summary:

#### Culturally Responsive Instruction

Goal 2: All students perform at or above grade level

### Issue Summary:

Research consistently shows that student attendance matters. Students with higher attendance rates are more likely to meet state academic standards, and graduate on time at higher rates. Educational outcomes reflect attendance even in the earliest grades, and then those gaps continue to widen into secondary (grades 6-12). While some students are more adversely affected by absences than others, it is clear that the effects of absences accumulate over time; attendance matters and every day counts. This is not to say that perfect attendance should be the goal 'no matter what.' We understand that students may miss school for a variety of reasons, and do not want to encourage sick children to attend when it is not appropriate to do so. In light of these factors, and the overwhelming amount of research, the district has set the attendance goal for all students at 80%.

K-12 Enrollment by Site			
School	Current Student Count	Attendance Report	23-24 March Student Count
Nunamiut School	94	65.55% (↓ 16.93%)	90
Tikiġaq School	202	73.40% (↓ 3.16%)	216
Nuiqsut Trapper School	135	69.21% (↓ 1.53%)	139
Kali School	71	77.35% (↓ 4.09%)	80
Aġlak School	121	68.30% (↑ 2.80%)	130



Harold Kaveolook School	59	82.02% (↓ 1.39%)	55
Meade River School	81	74.07% (↑ 7.93%)	81
Barrow High School	231	71.65% (↑ 2.02%)	256
Eben Hopson Middle School	199	77.18% (↑ 2.34%)	208
Fred Ipalook Elementary School	393	79.44% (↑ 3.03%)	423
KIITA Learning Community	41	66.89% (↑ 6.45%)	41
Total	1627	74.28% (↑ 0.46%)	1719

K3 & K4 Enrollment by Site			
School	Current Student Count	Attendance Report	23-24 March Student Count
Nunamiut School	18	41.21% (↓ 22.32%)	13
Tikiġaq School	16	48.83% (↓ 8.27%)	14
Nuġsut Trapper School	7	51.79% (↓ 26.31%)	14
Kali School	7	83.56% (↓ 6.33%)	10
Aġak School	8	60.90% (↑ 13.40%)	10
Harold Kaveolook School	5	88.89% (↑ 6.39%)	8
Meade River School	8	50.63% (↑ 0.29%)	8
Fred Ipalook Elementary School	79	60.62% (↑ 7.72%)	101
Total	148	58.19% (↑ 1.00%)	178

Night School Enrollment		
School	Current Student Count	23-24 March Student Count
KIITA Learning Community	7	16

The symbols (↑ and ↓) next to the data indicates if there was an increase or decrease since the last monthly report, the percentage next to the symbol indicates the amount it has increased or decreased by since the last monthly report.

Below, you will find two new charts. The first chart is a year over year enrollment summary starting with 2020. The second chart is showing year over year attendance throughout the school year. We provide this information so that trends can be seen, however please note that due to COVID related attendance policies, as well as the way that attendance was previously calculated, the attendance rate for the 2021-2022 school year is inflated. During that time, when a school was in “Red” status, or operating remotely, all attendance was “present.” During that school year, we also counted a student present daily, rather than period by period in Middle School and High School. This data is helpful however in order to see peaks and valleys by month.





## Monthly Enrollment: NSBSD

### North Slope Borough School District



Filters

Year(s):  
Multiple valu...

Month(s):  
All

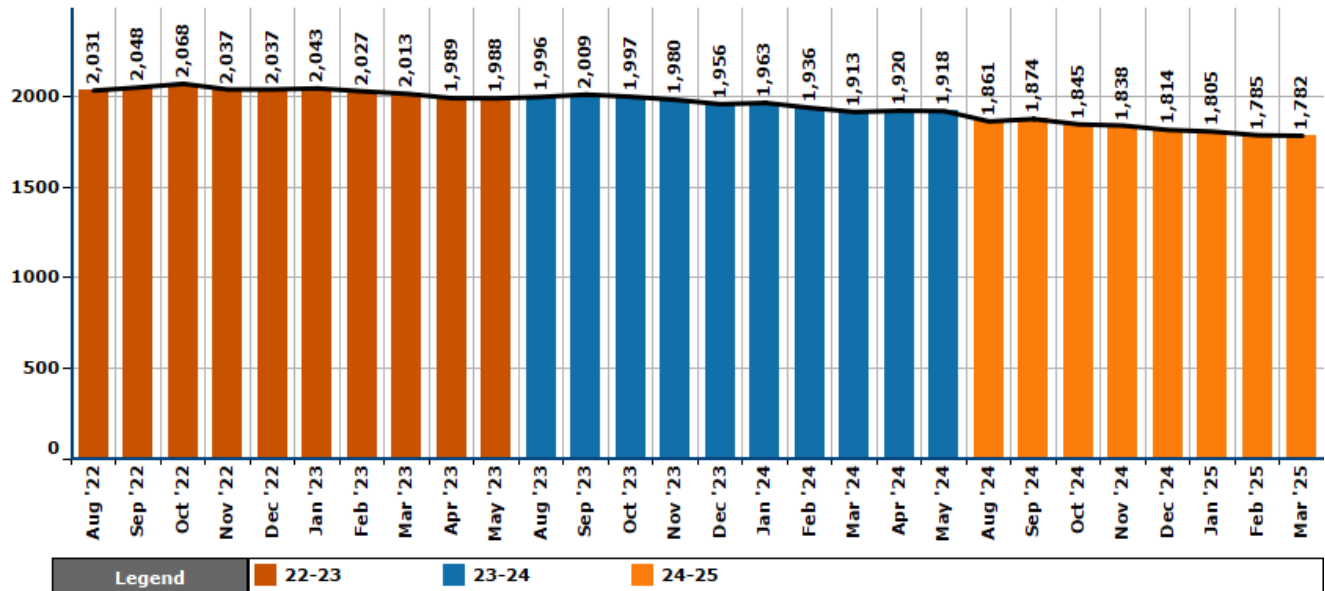
School(s):  
NSBSD

Grade(s):  
All

Download



### NSBSD's Enrollment for 24-25, 23-24, 22-23



### NSBSD Month-to-Month Changes

	22-23			23-24			24-25		
Aug	2,031			1,996			1,861		
Sep	2,048	↑ 17	0.8%	2,009	↑ 13	0.7%	1,874	↑ 13	0.7%
Oct	2,068	↑ 20	1.0%	1,997	↓ 12	-0.6%	1,845	↓ 29	-1.5%
Nov	2,037	↓ 31	-1.5%	1,980	↓ 17	-0.9%	1,838	↓ 7	-0.4%
Dec	2,037	-	-	1,956	↓ 24	-1.2%	1,814	↓ 24	-1.3%
Jan	2,043	↑ 6	0.3%	1,963	↑ 7	0.4%	1,805	↓ 9	-0.5%
Feb	2,027	↓ 16	-0.8%	1,936	↓ 27	-1.4%	1,785	↓ 20	-1.1%
Mar	2,013	↓ 14	-0.7%	1,913	↓ 23	-1.2%	1,782	↓ 3	-0.2%
Apr	1,989	↓ 24	-1.2%	1,920	↑ 7	0.4%			
May	1,988	↓ 1	-0.1%	1,918	↓ 2	-0.1%			

### NSBSD Year-to-Year Changes

	22-23		23-24		24-25	
Aug	2,031		1,996	↓ 35 -1.7%	1,861	↓ 135 -6.8%
Sep	2,048		2,009	↓ 39 -1.9%	1,874	↓ 135 -6.7%
Oct	2,068		1,997	↓ 71 -3.4%	1,845	↓ 152 -7.6%
Nov	2,037		1,980	↓ 57 -2.8%	1,838	↓ 142 -7.2%
Dec	2,037		1,956	↓ 81 -4.0%	1,814	↓ 142 -7.3%
Jan	2,043		1,963	↓ 80 -3.9%	1,805	↓ 158 -8.0%
Feb	2,027		1,936	↓ 91 -4.5%	1,785	↓ 151 -7.8%
Mar	2,013		1,913	↓ 100 -5.0%	1,782	↓ 131 -6.8%
Apr	1,989		1,920	↓ 69 -3.5%		
May	1,988		1,918	↓ 70 -3.5%		



## Monthly Attendance: NSBSD

### North Slope Borough School District



Filters

Year(s):  
Multiple valu...

Month(s):  
All

School:  
NSBSD

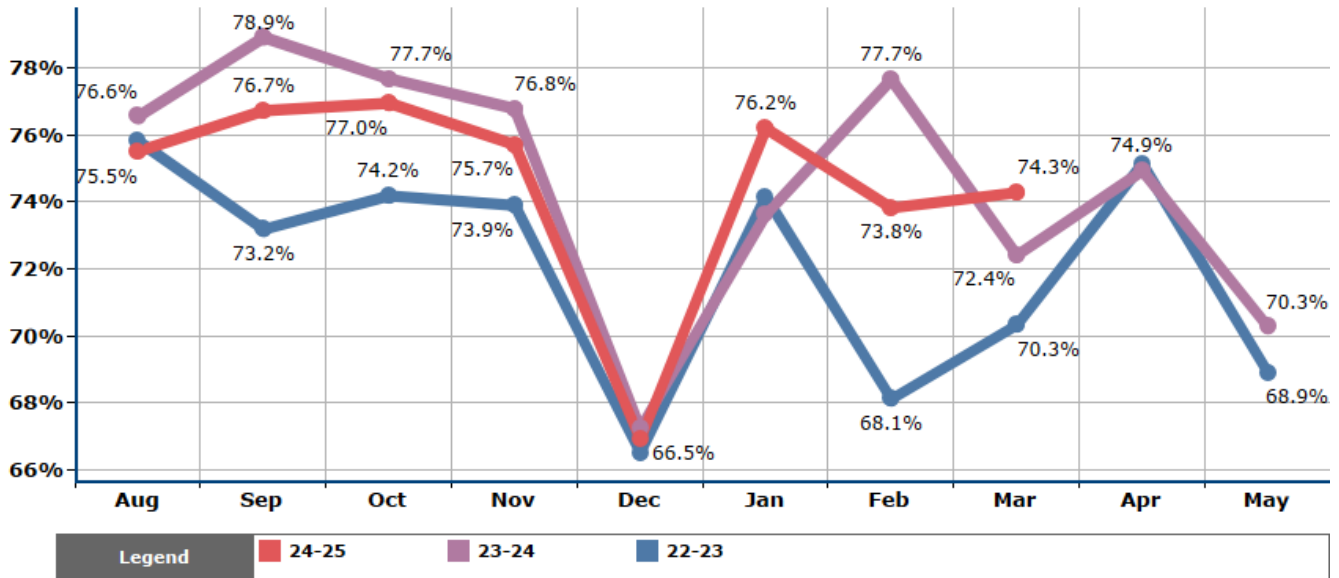
Grade:  
K - 12

Download

Looking for daily & weekly attendance? [Click here.](#)



### NSBSD's 24-25, 23-24, 22-23 Monthly Attendance for K - 12



#### NSBSD Month-to-Month Changes

	22-23	23-24	24-25
Aug	75.8%	76.6%	75.5%
Sep	73.2%	78.9%	76.7%
Oct	74.2%	77.7%	77.0%
Nov	73.9%	76.8%	75.7%
Dec	66.5%	67.2%	66.9%
Jan	74.2%	73.6%	76.2%
Feb	68.1%	77.7%	73.8%
Mar	70.3%	72.4%	74.3%
Apr	75.1%	74.9%	
May	68.9%	70.3%	

#### NSBSD Year-to-Year Changes

	22-23	23-24	24-25
Aug	75.8%	76.6%	75.5%
Sep	73.2%	78.9%	76.7%
Oct	74.2%	77.7%	77.0%
Nov	73.9%	76.8%	75.7%
Dec	66.5%	67.2%	66.9%
Jan	74.2%	73.6%	76.2%
Feb	68.1%	77.7%	73.8%
Mar	70.3%	72.4%	74.3%
Apr	75.1%	74.9%	
May	68.9%	70.3%	