

ENROLLMENT PROJECTION 2025-26

**Independent School District 877
Buffalo-Hanover-Montrose**



November 25, 2024

Enrollment Projection Report

- Review School Year 2023-24
- Nonpublic enrollment
- Review School Year 2024-25 K-12 Oct 1 enrollment
- The 2025-26 enrollment projection

2023-24 Enrollment Fall vs. Spring

- Historically, K-12 enrollment decreases from October 1 to June 1.
- Most of the enrollment drops happen in grades 11 and 12.
- 2023-24 was similar to 2022-23 in that starting and ending student numbers were slightly higher than the fall enrollment.

	Oct. 1 st , 2023	Jun. 1 st , 2024	Net	Prior Year
K	355	346	-9	24
Gr. 1-5	1,815	1,798	-17	32
Gr. 6-8	1,140	1,131	-9	23
Gr. 9-12	1,771	1,734	-37	-96
Total	5,081	5,009	-72	-17

Total Resident Students Enrolled in ISD 877 as of June 30th

- BHM's resident population decreased and the residents served population also decreased this past year.

	2019-20	2020-21	2021-22	2022-23	2023-24
Resident Served	5,278	5,024	4,967	4,921	4,756
Residents Going Elsewhere	835	836	879	857	887
Charter Schools	100	111	113	123	122
Tuition Based	72	64	81	89	76
Total Residents	6,285	6,035	6,040	5,990	5,841
Change Over Prior Year	-22	-250	5	-50	-149
% Change	-0.35%	-3.98%	0.08%	-0.83%	-2.49%
% Served vs. Total Population	83.98%	83.25%	82.24%	82.15%	81.42%

Nonpublic History

- Three nonpublic schools in the BHM district: St. Francis Xavier (K-8), Impact Christian Academy (K-9), and Salem Lutheran (K-8).

	14-15	15-16	16-17	17-18	18-19	19-20	20-21	21-22	22-23	23-24	24-25
Salem	88	84	89	91	87	74	65	77	78	73	85
St. Francis	212	205	173	176	176	181	180	156	217	247	291
ICA									83	107	61
Total	300	289	262	267	263	255	245	233	378	427	437
# Change	-6	-11	-27	5	-4	-8	-10	-12	145	49	10
% Change	-1.96%	-3.67%	-9.34%	1.91%	-1.50%	-3.04%	-3.92%	-4.90%	62.23%	12.96%	2.34%

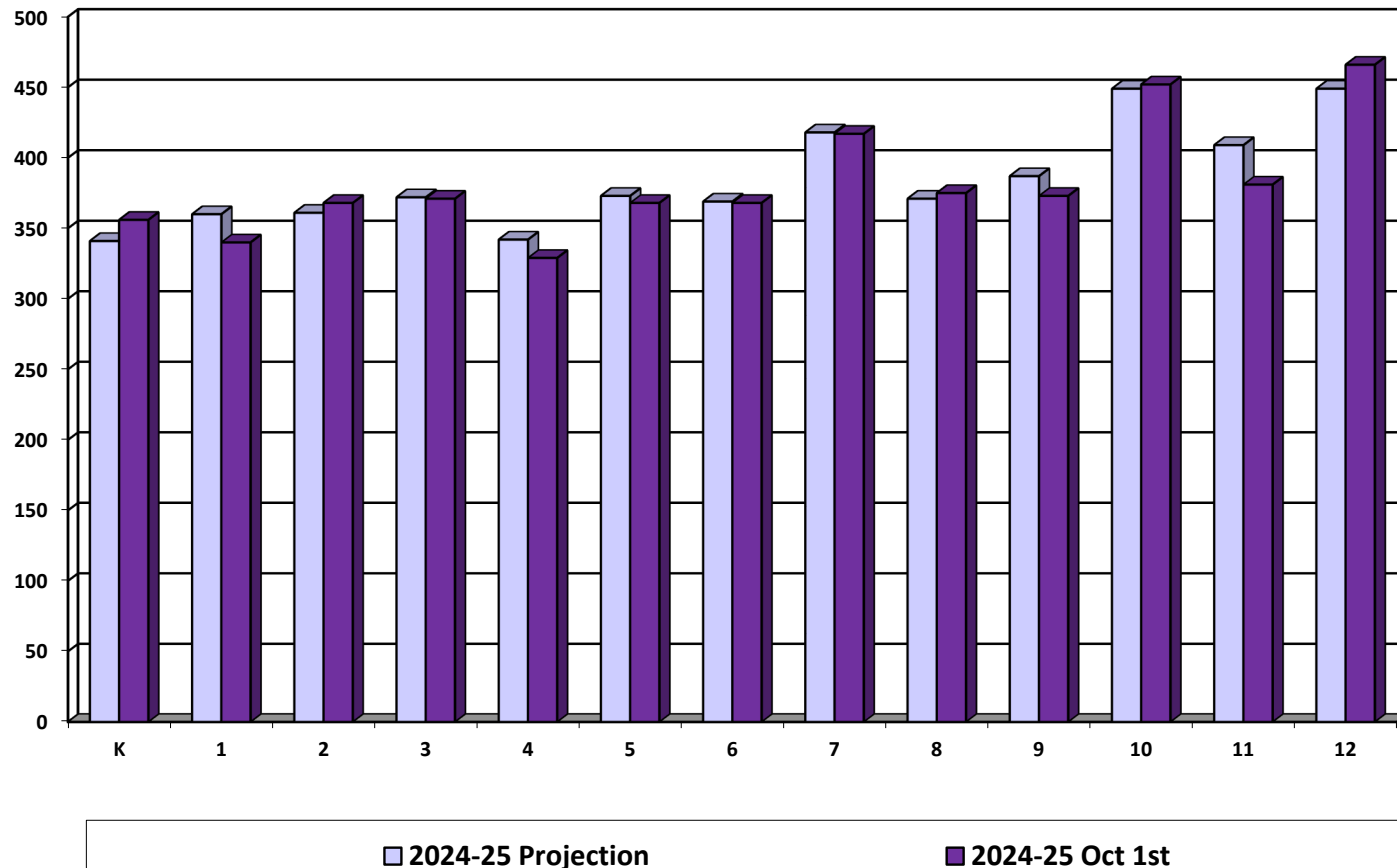
Homeschool - October 1	2019	2020	2021	2022	2023	2024
K-12 enrollment	220	449	343	337	326	341
Change over prior year	14	229	-106	-6	-11	15
% change	6.80%	104.09%	-23.61%	-1.75%	-3.26%	4.60%

Review of 2024-25 Enrollment Projection

- Last year's enrollment projection was overestimated by 37 students.
- Our internal monthly enrollment reports adjust down post-secondary and shared time students.
- The official Oct. 1st MARSS submission by MDE will report a higher enrollment with post-secondary and shared-time students.

	2024-25 Projection	2024-25	Difference
		Oct. 1 st	
K	341	356	15
Gr. 1-5	1,808	1,776	-32
Gr. 6-8	1,158	1,160	2
Gr. 9-12	1,694	1,672	-22
Total	5,001	4,964	-37

Review of 2024-25 Enrollment Projection by Grade



2025-26 Kindergarten Projection

- Hold Constant
- Linear Projection
- County Birth Method
- District-Determined Method

	20-21	21-22	22-23	23-24	24-25	25-26	26-27	27-28	28-29	29-30
Actual Enrollment	343	362	342	350	356					
Hold Constant						356	356	356	356	356
Four Year Linear Projection						350	349	348	347	346
Wright Co. Avg. Births						344	365	374	378	391
District Determined Method						344	365	374	378	391

Enrollment Projection Methods

- After the kindergarten enrollment projection is complete, the overall K-12 enrollment is determined by a variety of methods:
 - Cohort Survival Method
 - Weighted Cohort Survival Method
 - Numeric Survival Method
 - Weighted Numeric Survival Method
 - Merged Method

Projection Comparison

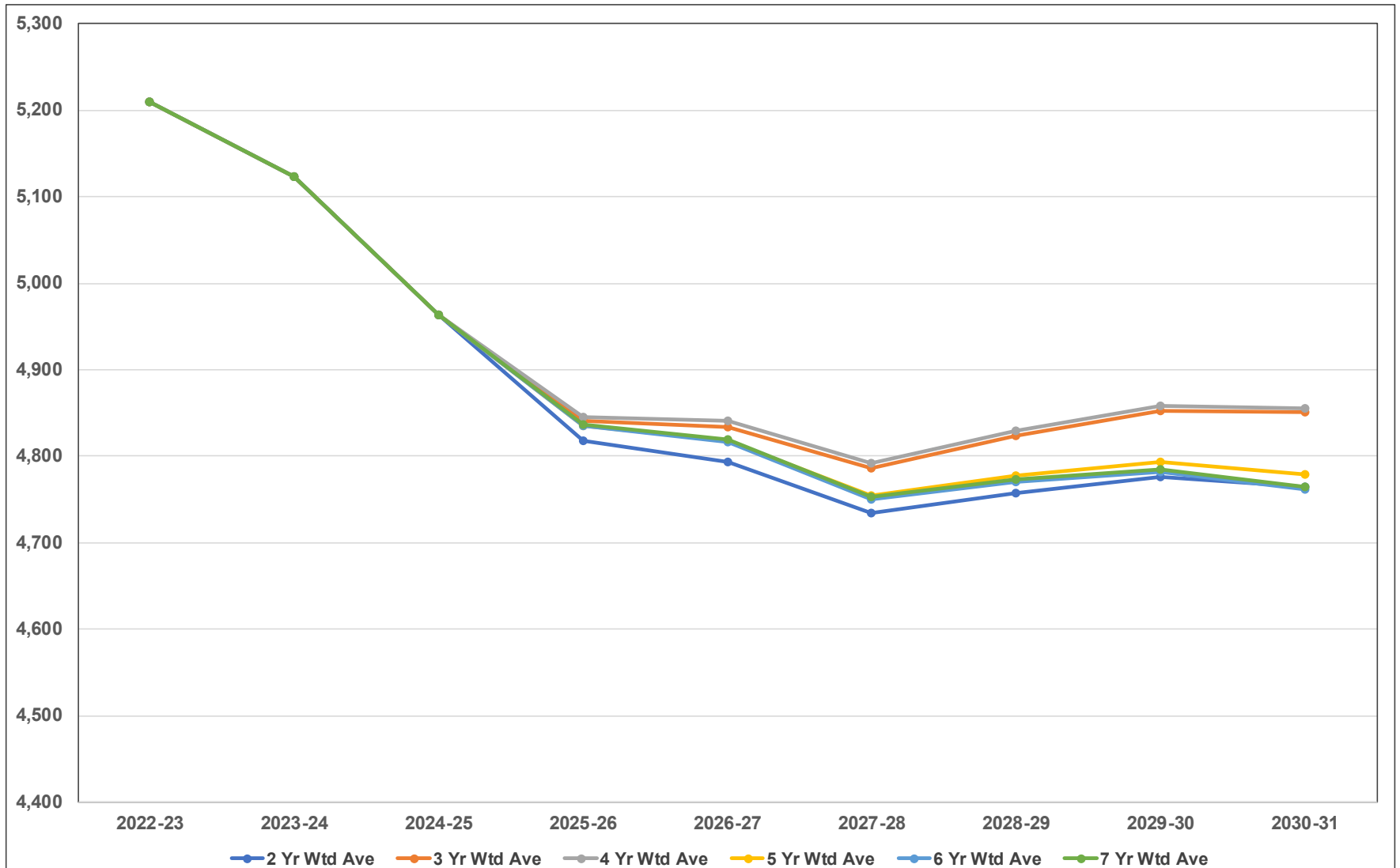
- Using Oct. 1st district data, eighteen different variations were examined.
- The Weighted Cohort Survival Method was selected for the projection:

	24-25	25-26	26-27	27-28	28-29	29-30
Wt Ratio 2 Years	4,964	4,818	4,793	4,735	4,758	4,776
Wt Ratio 3 Years	4,964	4,840	4,833	4,786	4,823	4,852
Wt Ratio 4 Years	4,964	4,846	4,841	4,793	4,830	4,859
Wt Ratio 5 Years	4,964	4,836	4,820	4,758	4,783	4,798
Wt Ratio 6 Years	4,964	4,835	4,816	4,750	4,770	4,781
Wt Ratio 7 Years	4,964	4,837	4,820	4,753	4,773	4,784
Max Difference		17	27	15	12	5

Buffalo-Hanover-Montrose Public School District

Kindergarten to Grade 12 Enrollment Projection Analysis

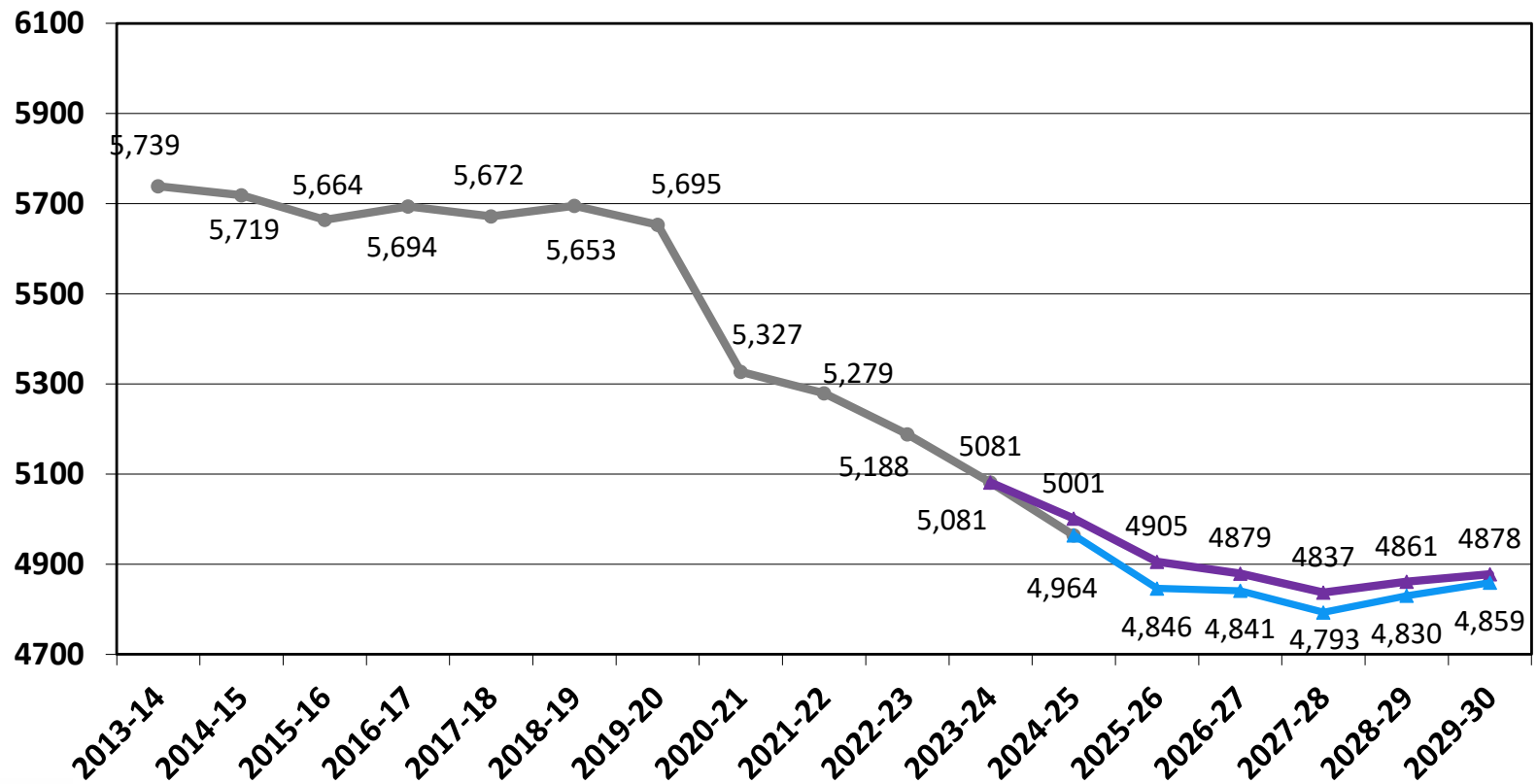
Projection Using 2-7 Year Weighted Averages



2025-26 Enrollment Factors

- Factors considered: housing market, economic conditions, Wright County births, and open enrollment.
 - Building permits by city:
 - Buffalo - 65 building permits issued during 2024 compared to 84 in 2023
 - Hanover - 43 building permits issued during 2024 compared to 71 in 2023
 - Montrose - 0 building permits issued during 2024 compared to 3 in 2023
- Four-year weighted kindergarten attendance average 20.0%
- Weighted ratio four years
- K-12 Enrollment 4,846
- Decrease of 59 students or 1.2% from the 2024-25 revised projection

Historical and Projected K-12 Enrollment



Enrollment Projection by Grade

	2024-25	2025-26	2026-27	2027-28	2028-29	2029-30
K	356	344	365	374	378	391
1	340	350	339	359	368	372
2	368	357	367	355	377	387
3	371	365	354	365	352	374
4	329	371	365	353	364	352
5	368	330	372	366	355	365
6	368	362	324	365	360	349
7	417	374	368	330	371	365
8	375	424	380	374	335	377
9	373	397	449	403	396	355
10	452	364	388	438	393	386
11	381	428	344	367	415	372
12	466	380	426	344	366	414
Total	4,964	4,846	4,841	4,793	4,830	4,859

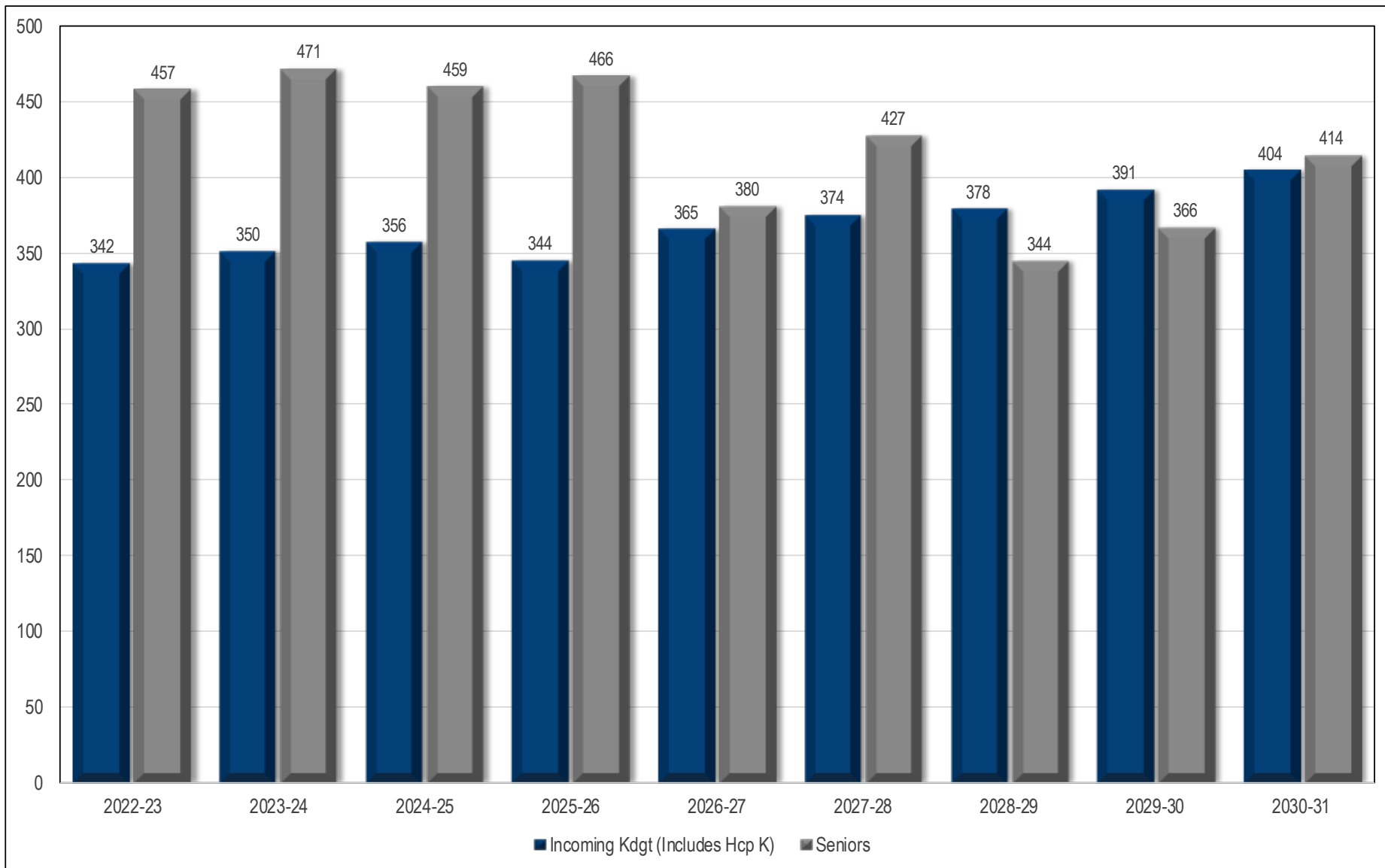
2025-26 Enrollment Projection by Grade Groupings

- With future enrollments, we need to consider building capacity:
 - BHS – 2,010
 - BCMS – 1,425
 - Elementary – 3,350

	2023-24	2024-25	2025-26	2026-27	2027-28	2028-29	2029-30
K	347	356	344	365	374	378	391
Gr. 1-5	1,805	1,776	1,773	1,797	1,798	1,816	1,850
Gr. 6-8	1,134	1,160	1,160	1,072	1,069	1,066	1,091
Gr. 9-12	1,823	1,672	1,569	1,607	1,552	1,570	1,527
Total	5,109	4,964	4,846	4,841	4,793	4,830	4,859
	-135	-145	-118	-5	-48	37	29
	-2.37%	-2.84%	-2.38%	-0.10%	-0.99%	0.77%	0.60%

Projection Based on 4 Year Weighted Average

Migration Kindergarten to Grade 12



Conclusion

- Recent birth rates have returned to pre-pandemic levels.
- BHM's enrollment is projected to decline through the school year 2027-28 but will start to increase in the following years.

2025-26 4,846