

Memorial Pkwy

Billy G Webb Dr

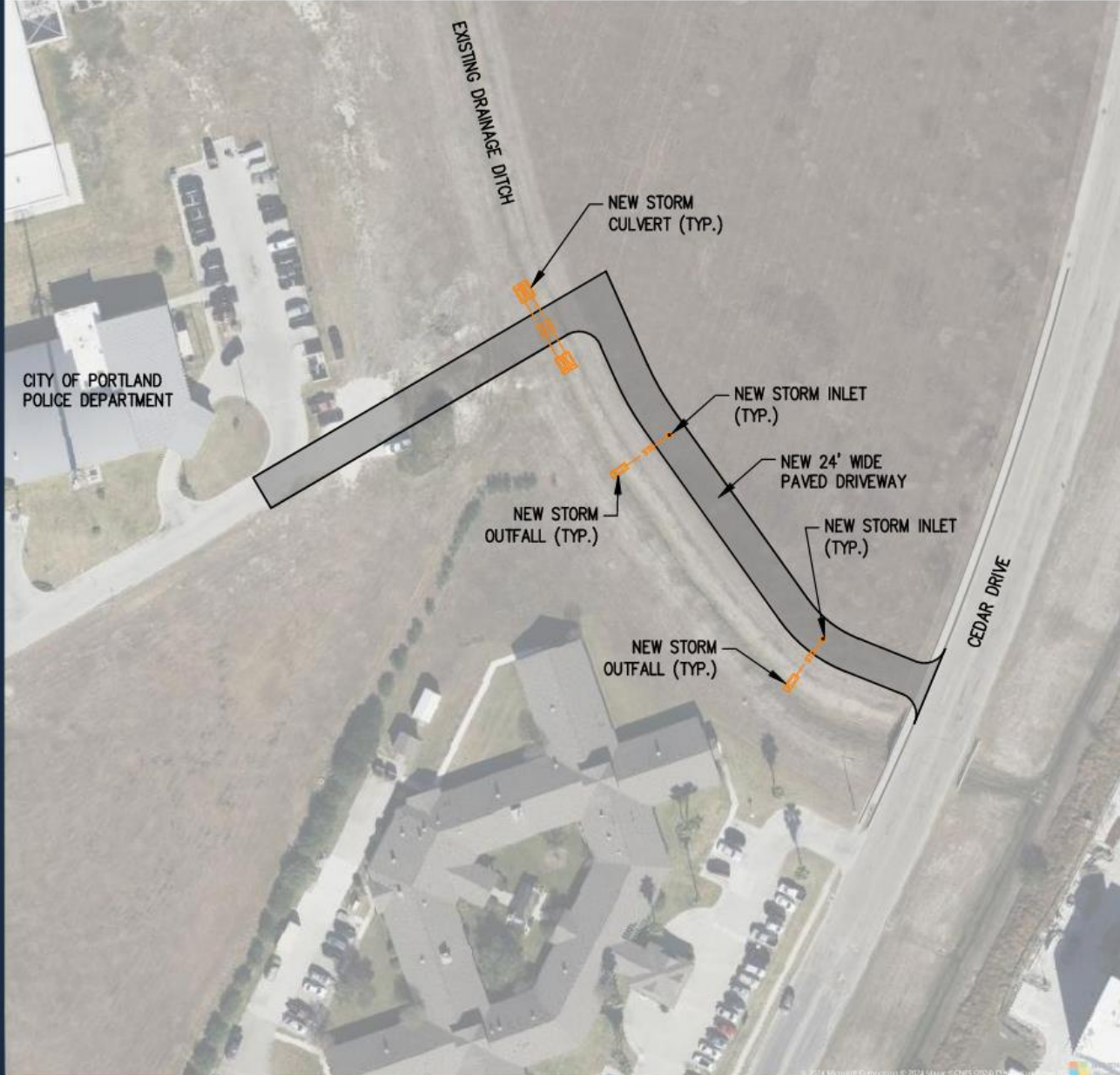
Proposed
Exit Drive

Police
Station

Cedar Dr

New TM
Clark

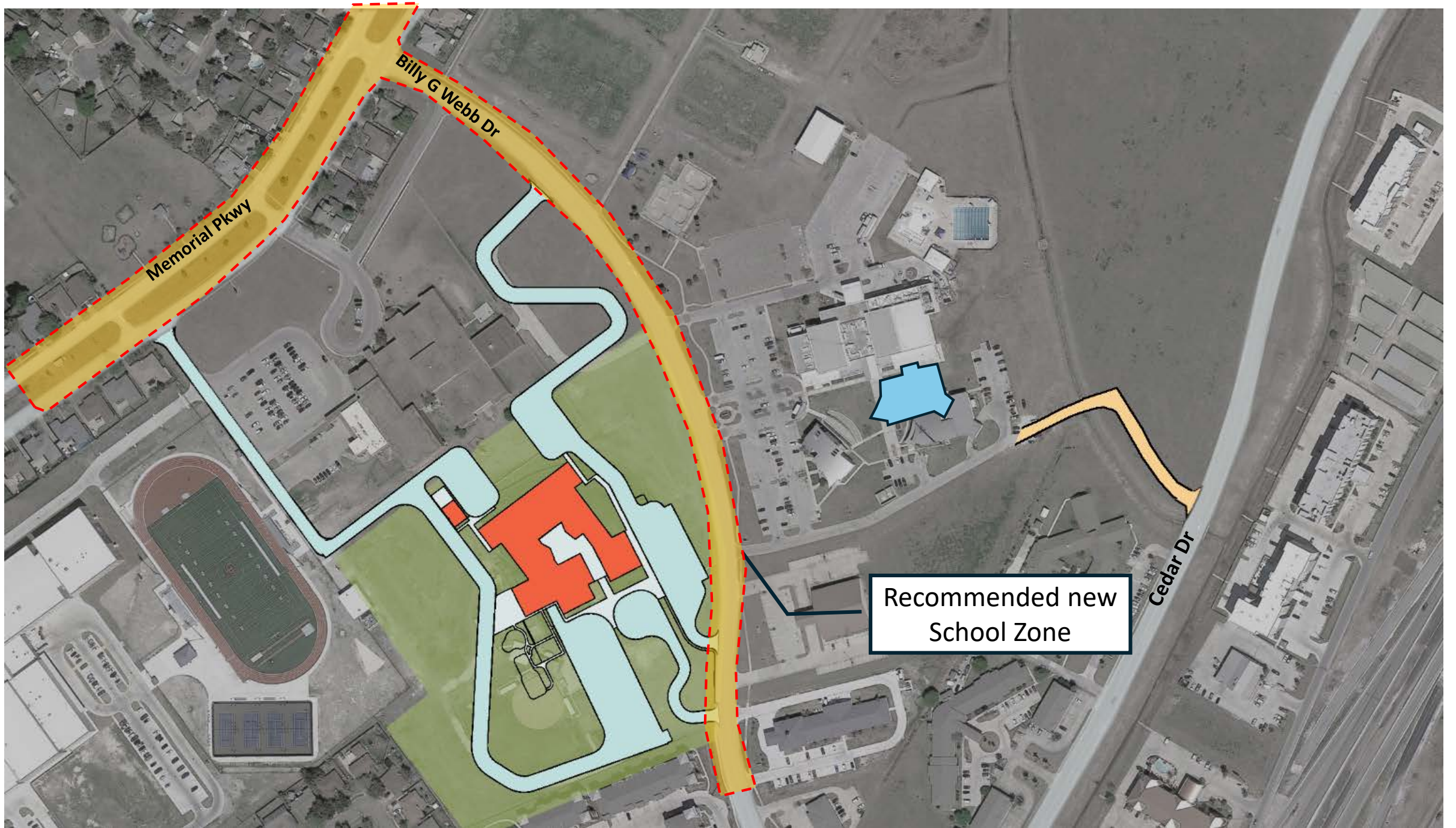
NOTE:
THIS EXHIBIT DEPICTS A SCHEMATIC LAYOUT OF POTENTIAL IMPROVEMENTS TO SATISFY THE CITY OF
PORTLAND CITY STAFF'S REQUEST FOR A NEW EMERGENCY ACCESS FOR THE CITY OF PORTLAND
POLICE DEPARTMENT AS A REQUIREMENT FOR THE NEW TM CLARK ELEMENTARY SCHOOL PROJECT.
THIS IS FOR PRELIMINARY REVIEW ONLY. NOT FOR CONSTRUCTION OR REGULATORY APPROVAL.



**SCHEMATIC LAYOUT
FOR
NEW EMERGENCY ACCESS
DRIVEWAY
FOR
CITY OF PORTLAND**

YE YORK ENGINEERING
CIVIL • PLANNING • CONSULTING

9708 S PADRE ISLAND DR., SUITE A-200 | CORPUS CHRISTI | TEXAS | 78418
361-245-9400 | YORKENG.COM | TEXAS ENGINEERING FIRM F-22063
PROJECT NO. 1049-23-03 © 2024 BY YORK ENGINEERING, INC.



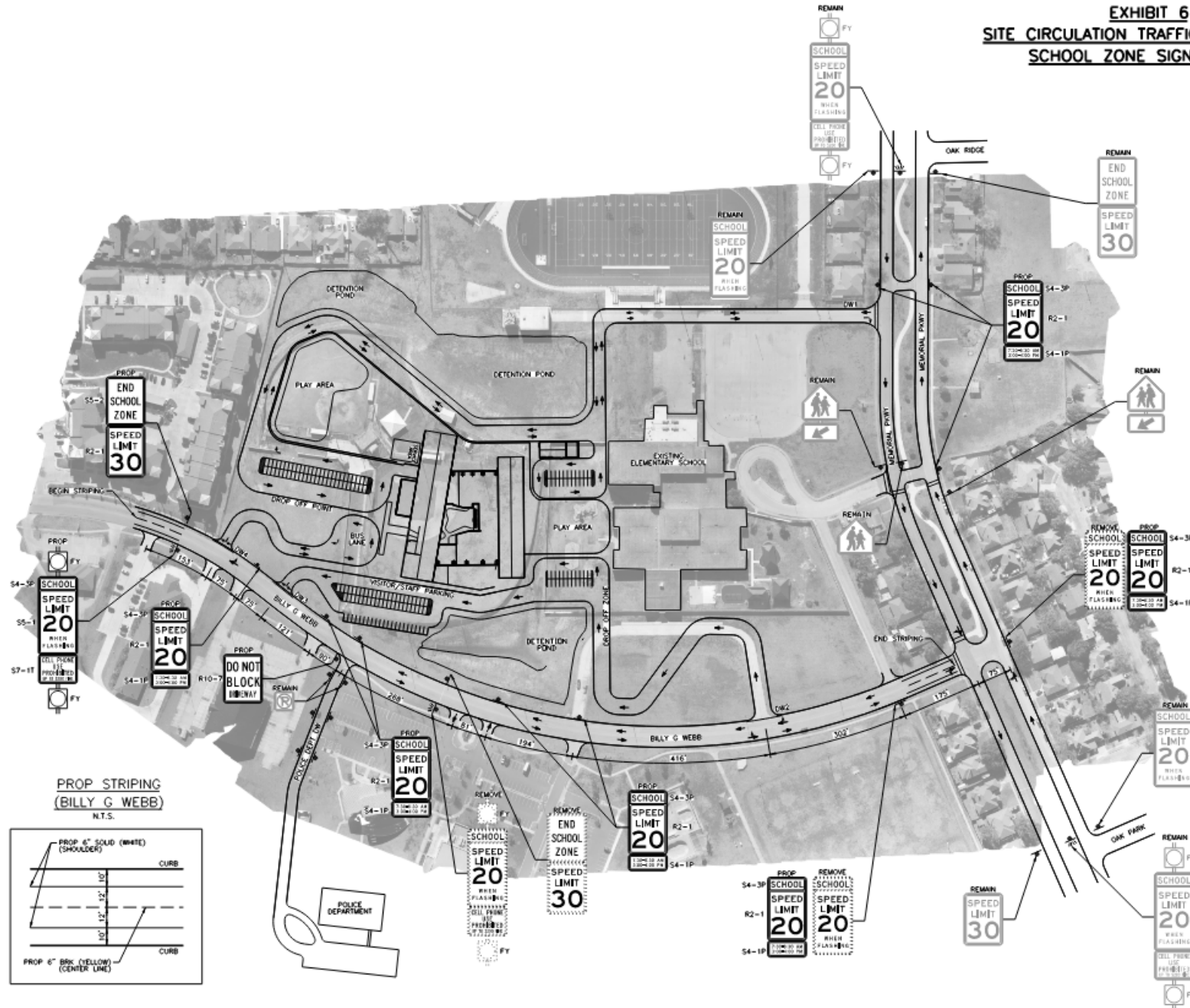
Memorial Pkwy

Billy G Webb Dr

Cedar Dr

Recommended new
School Zone

EXHIBIT 6 SITE CIRCULATION TRAFFIC MANAGEMENT SCHOOL ZONE SIGNING PLAN



EXIST SIGHT DISTANCE DIMENSIONS

