



STUDENT SERVICES: ADMIN BUILDING

MODULAR WALL | 05.16.2024

**interior.
environments**



YOUR
DEDICATED
TEAM

Our team of specialists were hired based on technical skillsets to create spaces that encompass innovative, unique and creative solutions. They will expertly guide your project from conception to completion.



Bill Powell
Architectural Products Specialist

248.305.1940 | bpowell@ieoffices.com



Karen Huth
Sr. Project Coordinator

248.996.6275 | khuth@ieoffices.com



Ashley Gemuend
Designer
- Architectural Product Specialist

248.996.6243 | agemuend@ieoffices.com



Olivia Grant
Designer
- Architectural Products Specialist

734.788.1481 | ogrant@ieoffices.com



Andrew Schneider
Field Project Manager
- Architectural Products Specialist

810.278.5591 | aschneider@ieoffices.com

SPEED OF INSTALL

- Scissor-lift leveling mechanism – standard, patented scissor-lift leveling mechanism
- Reusable zippers to support reconfiguration
- Factory-built, pre-assembled wall construction – fast installation with unitized construction

EASE OF RECONFIGURATION

- Non-progressive wall installation comes standard with framed, frameless and solid walls
- Non-sequential panel tiling
- Simple kit of parts means fewer parts and pieces with unitized construction

QUALITY/DURABILITY/ACOUSTICS

- Factory-built, quality-controlled and precision-built unitized construction
- Pinned connections ensure alignment and tight connections
- Half-inch thick wall tiles
- Tile centering clips to keep tiles aligned
- Aluminum base trim – standard with framed, frameless and solid wall

DESIGN FLEXIBILITY

- Integrated, lay-in power routing option from walls to furniture – available post option with optional connection to systems furniture
- Interchangeable tile materials
- Privacy tile systems – rail mounted and button-mounted options
- Coordinated finishes from walls to furniture
- Vertical and horizontal furniture hanging capabilities



FRAMELESS GLASS WALLS

- 1/2" Tempered glass
 - STC 34: frameless glass assembly
- 1/2" Laminated glass
 - STC 36: frameless glass assembly
- 1/2" High Acoustical Laminated glass
 - STC 38: frameless glass assembly

FRAMED GLASS WALLS

- 1/4" Tempered glass
 - STC 27: framed glass assembly
- 1/4" Laminated glass
 - STC 32: framed glass assembly
- 3/8" Tempered glass
 - STC 31: framed glass assembly
- 3/8" Laminated glass
 - STC 34: framed glass assembly

SOLID WALL

- Solid wall with steel tiles
 - STC 39: No insulation
 - STC 44: Standard insulation

BASE AND CEILING TRIM

- Two profile options: standard & low profile
- Anodized & painted

POWER CAPACITY

- Modular
 - 4-wire, 2-circuit system
 - One or two receptacle options
- Hardwired (posts or solid wall)
 - J-box and conduit installed
 - Single, double, and quad-port options
 - Accepts commercially available receptacles and faceplates

DOORS

- Sliding, pivot, and hinged doors
- Single- and double-door options
- Door finish options
 - Plate glass
 - Aluminum framed glass
 - Veneer
 - Painted
 - Laminate

SOLID WALL TILE MATERIALS

- Painted steel
- Tackable fabric
- Back-painted glass
- Laminate
- Veneer





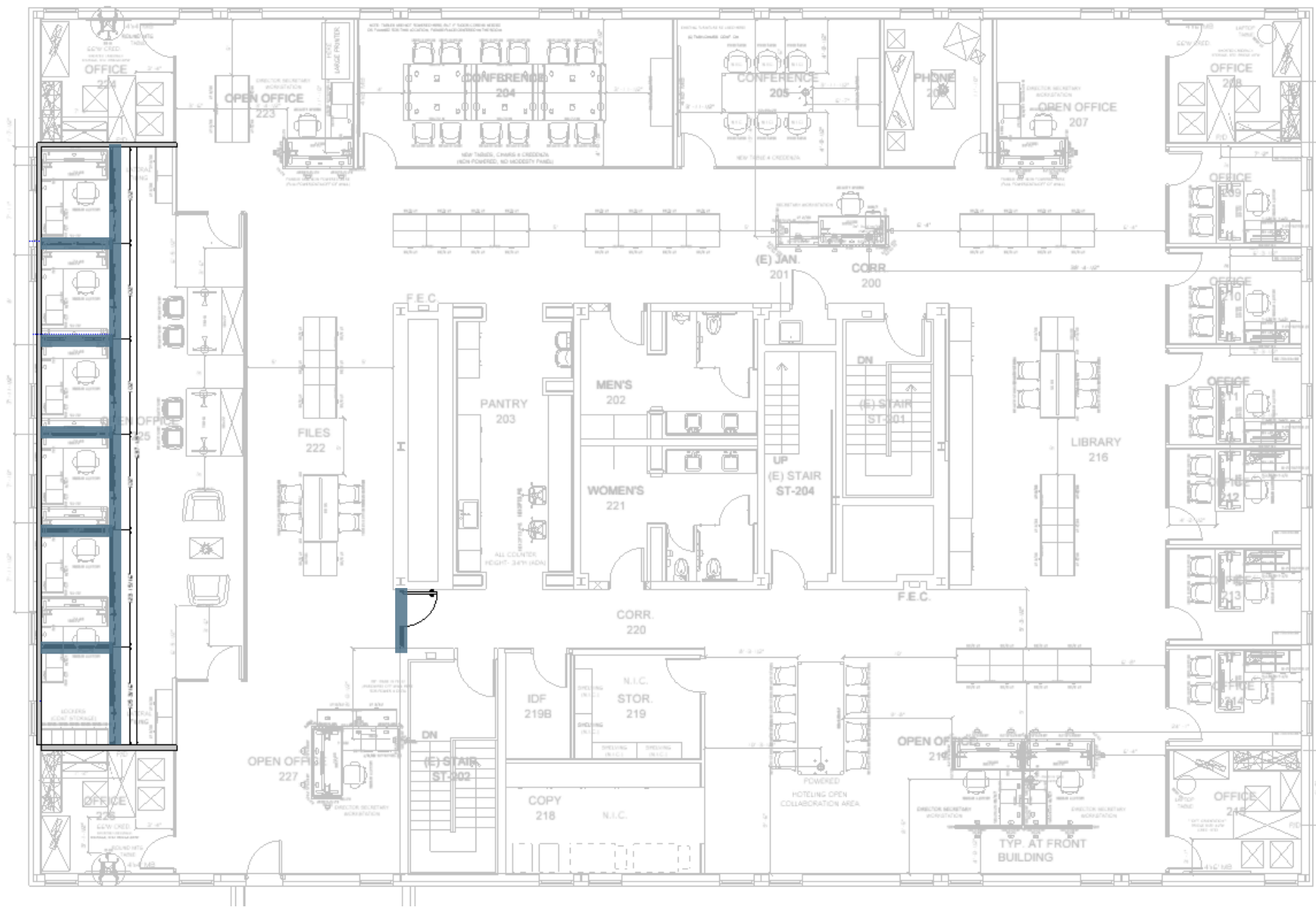
PROJECT SPECIFICATIONS

Scope Outline

Feature Highlights

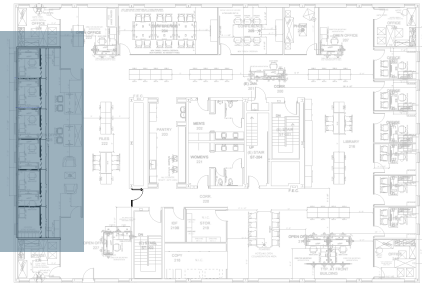
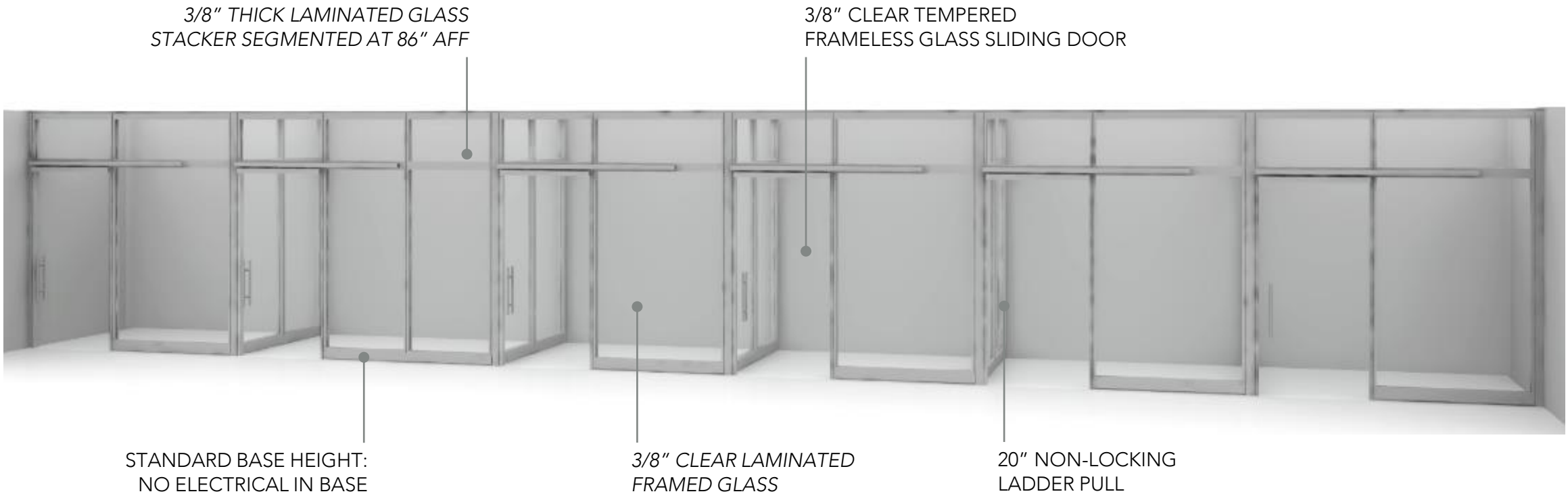
Project Pricing

FLOOR PLAN & KEY



SCOPE KEY
FRAMED GLASS

OFFICES



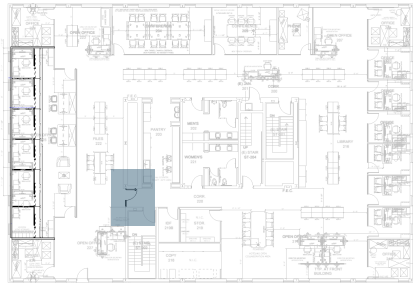
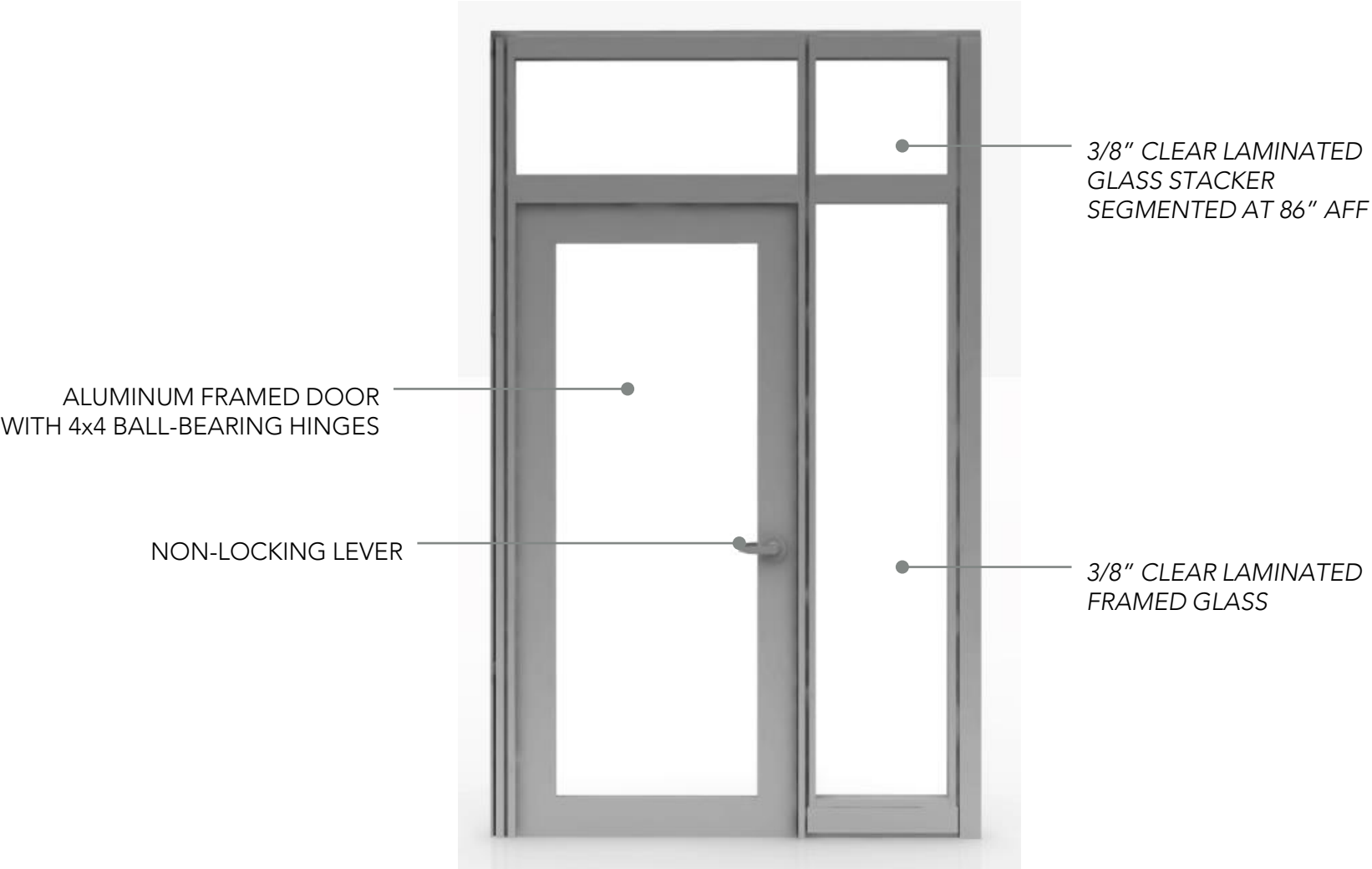
KEY PLAN

NOTE:
First two offices on the left in the rendering need to be larger due to where exterior windows are located.

WANT ADDITIONAL COST SAVINGS?
LOOK OUT FOR THE *ITALICIZED* TEXT.

● — *ABLE TO BE VALUE-ENGINEERED*

ADMIN ENTRY DOOR



KEY PLAN

WANT ADDITIONAL COST SAVINGS?
LOOK OUT FOR THE *ITALICIZED* TEXT.

— *ABLE TO BE VALUE-ENGINEERED*

BEYOND WALL

BEYOND WALL			
Item	Linear Feet	Door Qty	Price
Demountable Walls & Doors	90	7	\$52,442.00
Freight			\$1,231.00
Non-Union Installation (Receive at Warehouse, Deliver to Site and Install During Regular Hours)			\$11,819.00
Budgetary Total Price			\$65,492.00
Budgetary Price Per Linear Foot			\$727.69

NOTES

- + Do not issue contract on pricing above. Formal quote will be provided upon award and selection of options.
- + Tax not included
- + Pricing valid for 30 days
- + Prior to order
 - + All details (scope, finishes, hardware, etc) must be confirmed
 - + Field conditions must be verified or hold-to's must be agreed upon in writing
 - + Sign-off on drawings required
 - + 50% deposit required

Create space.