

Site-Based Council Meeting

Tuesday, January 16, 2018, 5:00 pm

Mt. Eccles Library

AGENDA

Monthly Items:

- Attendance/Enrollment Report
- School Improvement Efforts
- Mt. Eccles Update:
 - Web-Based MAP Testing

Highlighted Items:

- Strategic Planning Survey Preview
- Social Emotional Learning and Trauma-Informed Schools – an introduction

Pending Agenda: Restorative Justice

MINUTES

The meeting was called to order at 5:04 pm. Present were Nick Rogers (parent), Becky Niles (parent), Alex Russin (superintendent), Sheryl Glasen (parent and school board), Laura Hanson (teacher), and Gayle Groff (principal).

Monthly Items:

Attendance/Enrollment Report:

MONTHLY ATTENDANCE (%)

| | Pre-K | Kindergarten | Grade 1 | Grade 2 | Grade 3 | Grade 4 | Grade 5 | Grade 6 | AVG. |
|------|-------|--------------|---------|---------|---------|---------|---------|---------|-------|
| SEPT | 95.3% | 93.5% | 92.9% | 96.0% | 94.8% | 94.9% | 96.9% | 96.3% | 95.0% |
| OCT | 93.0% | 94.0% | 94.3% | 96.3% | 95.5% | 91.1% | 92.6% | 93.5% | 93.8% |
| NOV | 82.2% | 89.6% | 92.2% | 95.3% | 92.7% | 91.7% | 96.8% | 89.9% | 91.5% |
| DEC | 85.9% | 88.6% | 95.7% | 81.0% | 86.9% | 82.7% | 86.6% | 91.4% | 87.8% |

The downward trend in attendance from the beginning of the year is relatively typical. It will probably stay low for another couple of months and then increase again towards the end of the year.

STUDENT ENROLLMENT (Based on date of report)

| | Pre-K | Kindergarten | Grade 1 | Grade 2 | Grade 3 | Grade 4 | Grade 5 | Grade 6 | Total Students /Total FTE |
|-------------|-------|--------------|---------|---------|---------|---------|---------|---------|---------------------------|
| AUG | | | | | | | | | |
| SEPT | 13 | 20 | 27 | 17 | 28 | 24 | 20 | 27 | 176/167.5 FTE |
| OCT | 13 | 21 | 27 | 17 | 28 | 24 | 20 | 27 | 177/168.5 FTE |
| NOV | 14 | 21 | 26 | 17 | 28 | 24 | 21 | 27 | 178/169 FTE |
| DEC | 14 | 21 | 26 | 17 | 28 | 24 | 21 | 27 | 178/169 FTE |
| JAN | 14 | 21 | 26 | 16 | 28 | 23 | 21 | 28 | 177/168 FTE |

School Improvement Efforts: We reviewed the three continuing goals and one new goal chosen for this year. The new goal on behavior was added largely due to feedback from teachers and the site-based council.

2.4 – School staff use multiple data sources, including state assessment data, to evaluate how school programs impact student performance including specific sub groups and specific grade levels. (continued from 2016-17)

3.2 – School staff implement a coherent, documented plan throughout the school to ensure that all students receive core instruction and all low-performing students receive additional support to help them meet or exceed the state content standards. (continued from 2016-17)

4.3 – School staff communicate school-wide behavior expectations that are understood and achieved by students, and staff provide positive behavioral supports. (new in 2017-18)

4.7 – School staff communicate effectively with parents about learning expectations, student progress, and reinforcing learning at home; staff implement effective strategies to increase parent engagement. (continued from 2016-17)

Mt. Eccles Update:

- **Web-Based MAP Testing** – Cordova School District is transitioning from using a local caching server for MAP testing to a strictly web-based environment. We’re doing this during the Winter testing window, so that any issues will not have a negative effect on this year’s growth data, which is determined by Fall and Spring scores. The biggest potential issue is that we will have to restrict the number of students who can test at one time due to the increased demand on bandwidth. We will experiment during the testing to see how many we can actually accommodate at once. The teachers have been looking at the new reports and information that is going to be available to us in this new system, and we have found some things that will be useful as we use these tests to focus our instruction.

Highlighted Items:

Strategic Planning Survey Preview – Superintendent Russin has been working for quite a while on a survey to help the strategic planning process the district is in right now. He originally concentrated on quantitative questions, but felt that these were inadequate for the purpose of scrutinizing the vision and mission statements to make sure they reflect our current stakeholders’ point of view. He settled on a few qualitative questions instead, and shared those with the group. The link to the survey is <https://www.surveymonkey.com/r/QB39Y5C>. One suggestion made by Nick Rogers was to ask diverse Cordova businesses and groups to complete the survey with collective opinions - groups like CTC, the Science Center, the fisherman’s union, the new FilAm group, etc. Alex Russin plans to look at the results of this survey in community meetings in March. These community conversations will help us learn how the school system can meet the growing needs of our students, schools, and community.

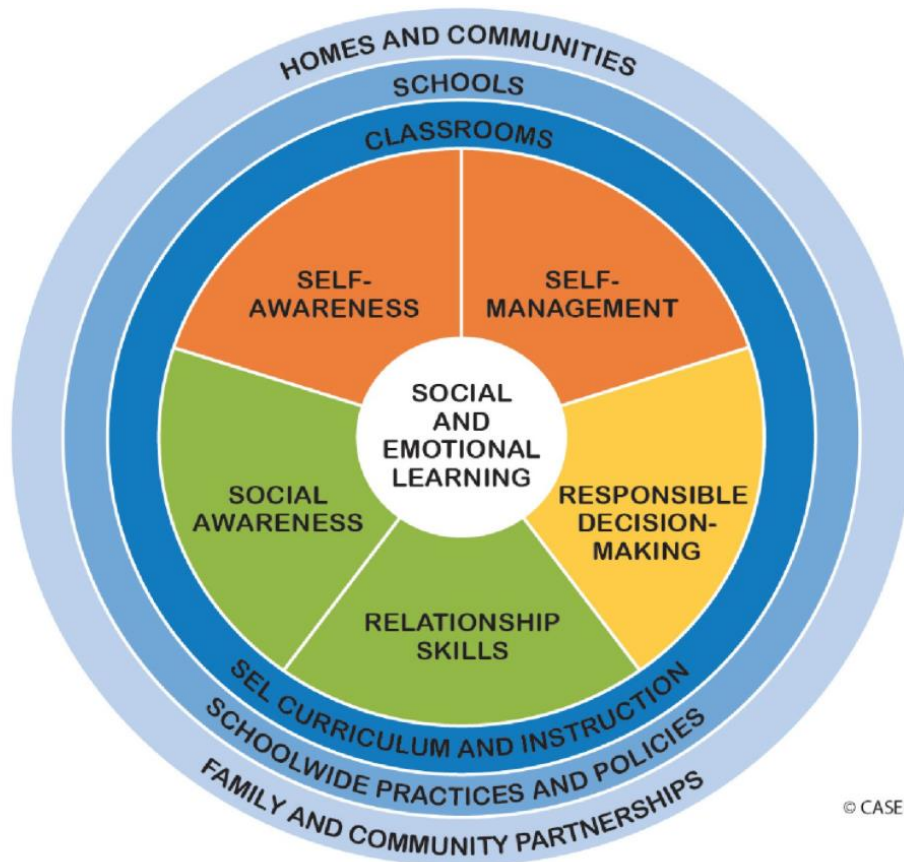
Social/Emotional Learning and Trauma-Informed Schools: An Introduction – A defined practice of Social/Emotional Learning (SEL) is a goal of the school board this year. Gayle Groff gave a brief history of CSD’s engagement with SEL and trauma-informed schools. She included information on:

- the ACES study (Adverse Childhood Experiences – how they affect brain development in adolescence)
- Paper Tigers Movie – highlighting an alternative school in Walla Walla, Washington who implemented trauma-informed practices and how it affected one group of students
- trauma-informed practices courses that individual staff members have taken
- mindfulness practices for staff, and
- trauma-informed opportunities at the upcoming RtI Conference which 5 CSD staff are attending

Alex shared a graphic outlining important elements of an SEL program. (See below.) He stated that his goal is for this to be not just what we do, but who we are as a school district and on into the community.

The meeting was adjourned at 6:04 pm. Our next meeting will be held Tuesday, February 20th at 5:00 pm in Mt. Eccles Library.

Respectfully submitted,
Gayle Groff



© CASEL 2017