

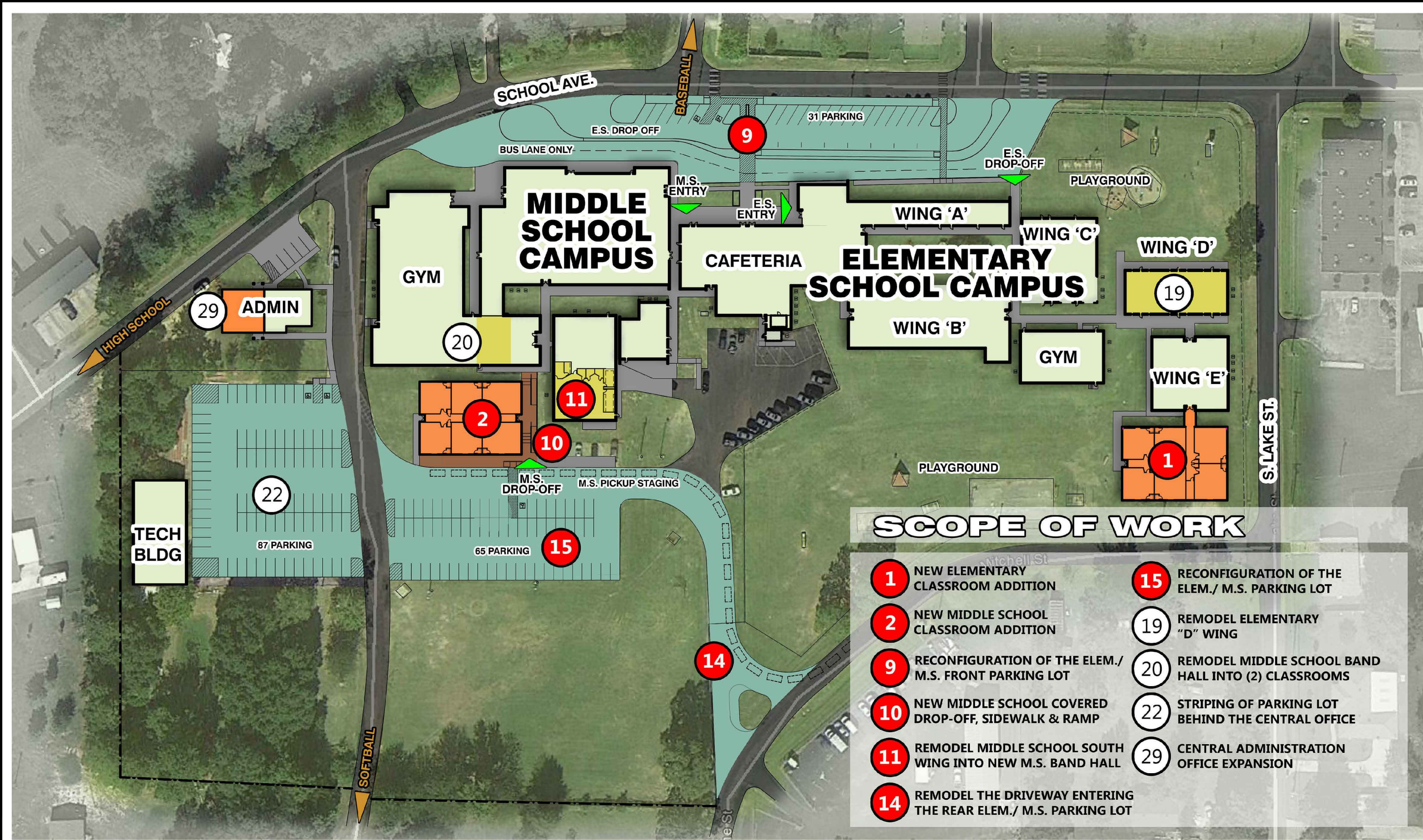


WASKOM

INDEPENDENT SCHOOL DISTRICT

2015 PROPOSED FACILITIES BOND ISSUE MASTER PLAN FOR THE WASKOM INDEPENDENT SCHOOL DISTRICT

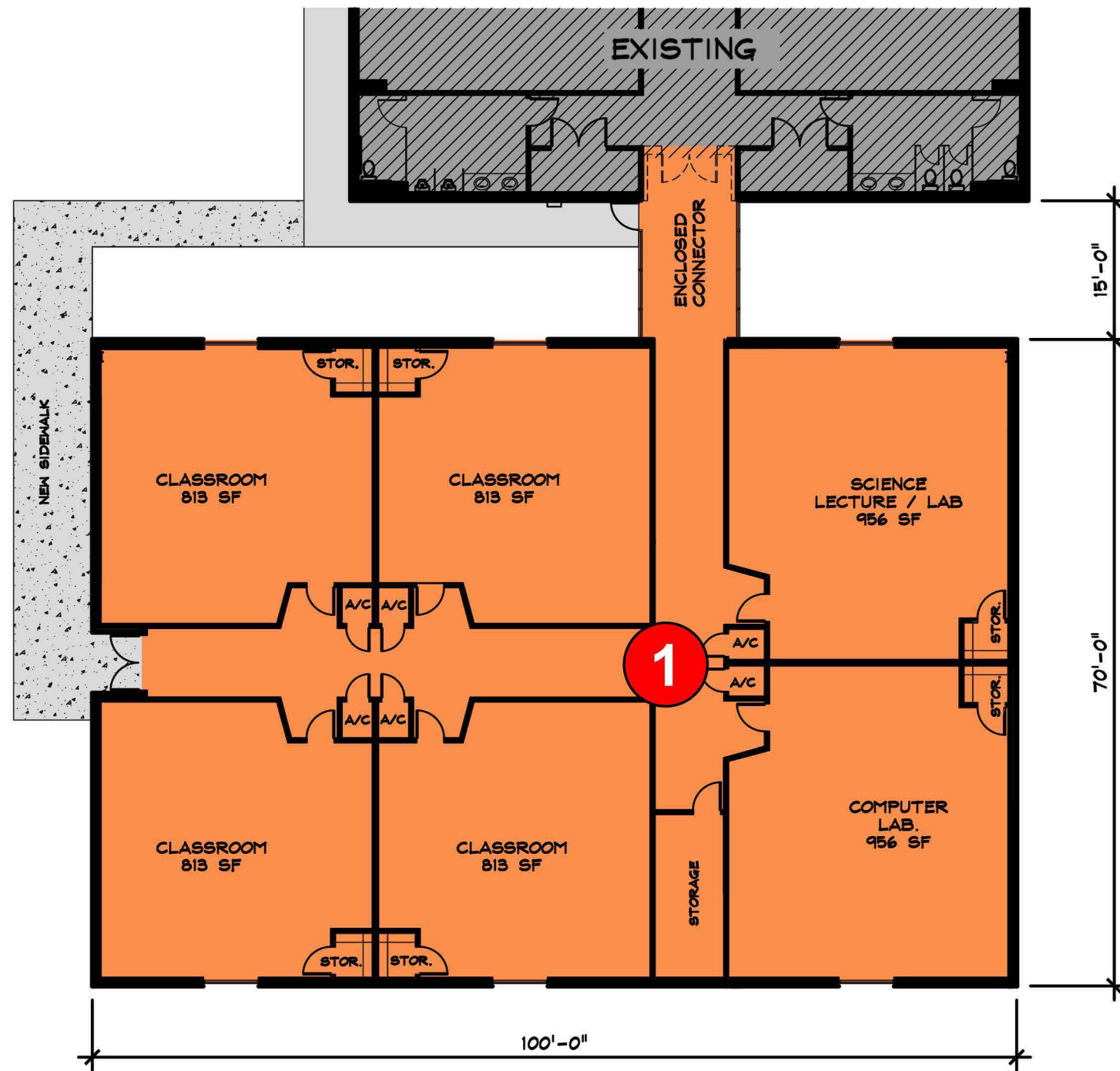
- 1 NEW ELEMENTARY CLASSROOM ADDITION
- 2 NEW MIDDLE SCHOOL CLASSROOM ADDITION
- 3 NEW HIGH SCHOOL CLASSROOM ADDITION
- 4 NEW HIGH SCHOOL PRACTICE GYM WITH COVERED WALKWAY
- 5 NEW HIGH SCHOOL BAND HALL WITH COVERED WALKWAY
- 6 NEW WASKOM MULTI-PURPOSE ACTIVITY CENTER
- 7 NEW ATHLETIC WEIGHT ROOM
- 8 NEW ATHLETIC FIELD HOUSE
- 9 RECONFIGURATION OF THE ELEM./ M.S. FRONT PARKING LOT
- 10 NEW MIDDLE SCHOOL COVERED DROP-OFF, SIDEWALK & RAMP
- 11 REMODEL MIDDLE SCHOOL SOUTH WING INTO NEW M.S. BAND HALL
- 12 REMODEL THE EXISTING HIGH SCHOOL CAFETORIUM
- 13 NEW ATHLETIC STORAGE
- 14 REMODEL THE DRIVEWAY ENTERING THE REAR ELEM./ M.S. PARKING LOT
- 15 RECONFIGURATION OF THE ELEM./ M.S. PARKING LOT
- 16 'CATE' SHOP REMODEL
- 17 'CATE' CLASSROOM REMODEL-AG. SCIENCE CLASSROOM
- 18 'CATE' CULINARY ARTS COMMERCIAL KITCHEN REMODEL
- 19 REMODEL ELEMENTARY 'D' WING
- 20 REMODEL MIDDLE SCHOOL BAND HALL INTO 2 CLASSROOMS
- 21 REMODEL EXISTING HIGH SCHOOL BAND HALL INTO DRAMA CLASSROOM & STORAGE
- 22 STRIPING OF PARKING LOT BEHIND THE CENTRAL OFFICE
- 23 SOFTBALL FIELD PARKING LOT
- 24 BASEBALL FIELD PARKING LOT
- 25 NEW ADDITIONAL FOOTBALL STADIUM PARKING
- 26 NEW WASKOM MULTI-PURPOSE ACTIVITY CENTER PARKING
- 27 HIGH SCHOOL AUDITORIUM EXPANSION
- 28 NEW FOOTBALL FIELD VISITORS CONCESSION STAND & RESTROOMS
- 29 CENTRAL ADMINISTRATION OFFICE EXPANSION



ELEMENTARY & MIDDLE SCHOOL - MASTER PLAN



08-17-2015



SCOPE OF WORK:

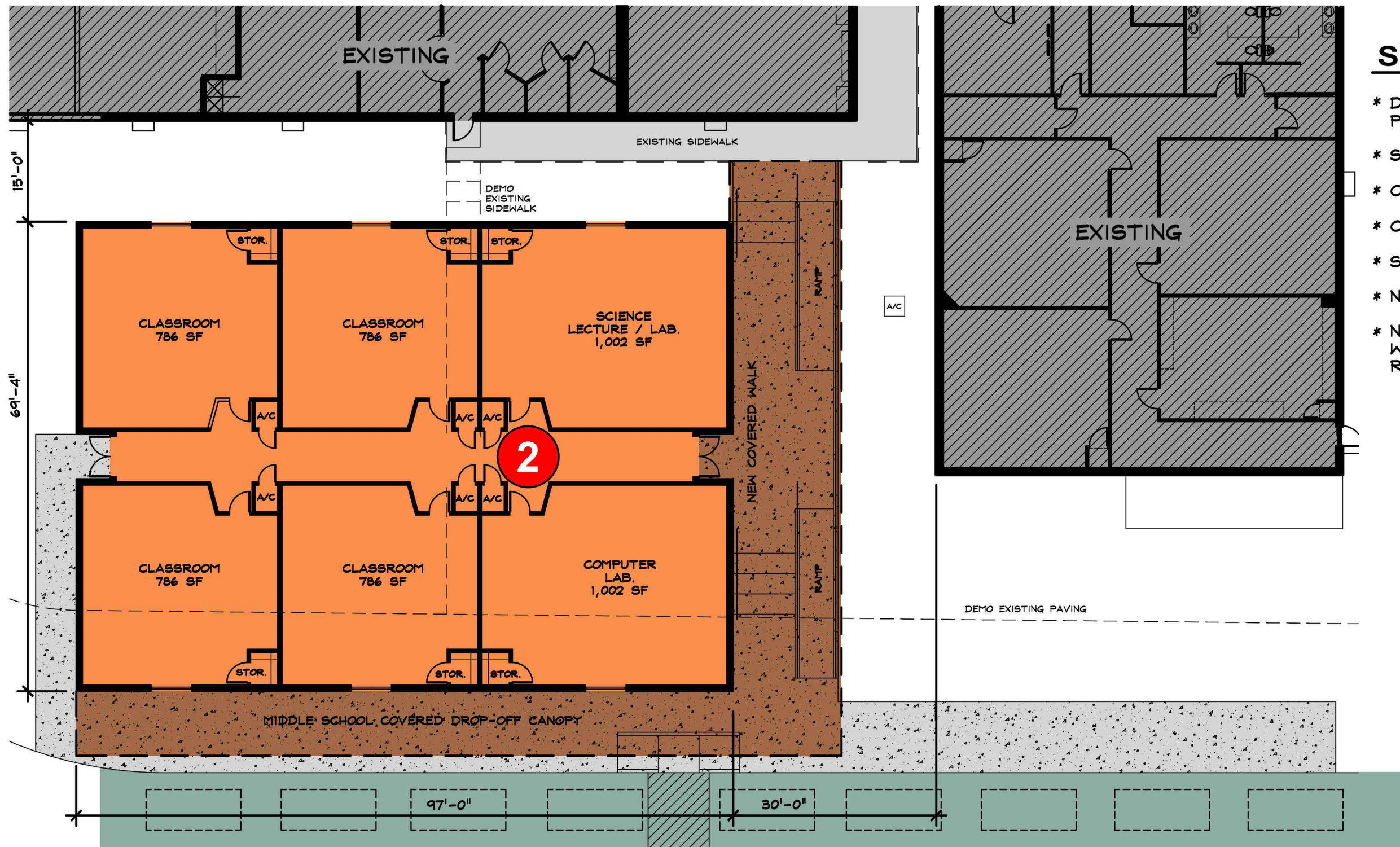
- * SQUARE FOOTAGE: 7,131 SF
- * CLASSROOMS: FOUR (4)
- * COMPUTER LAB: ONE (1)
- * SCIENCE LECTURE / LAB: ONE (1)



NEW ELEMENTARY CLASSROOMS ADDITION

SCALE: 1/16"=1'-0"





SCOPE OF WORK:

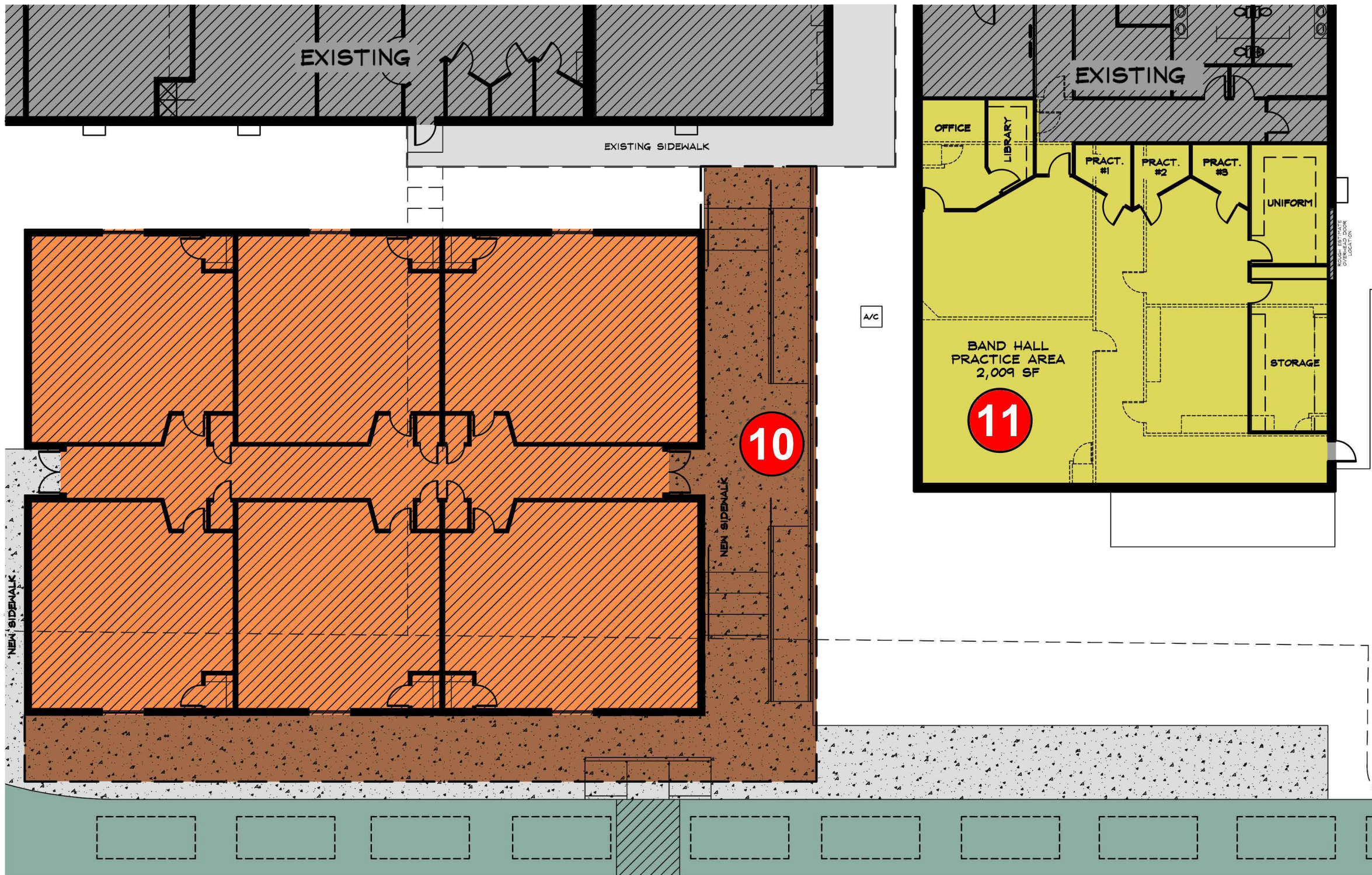
- * DEMOLITION: SIDEWALKS & PARTIAL PARKING AREA
- * SQUARE FOOTAGE: 6,660 SF
- * CLASSROOMS: FOUR (4)
- * COMPUTER LAB: ONE (1)
- * SCIENCE LECTURE / LAB: ONE (1)
- * NEW CANOPY AREA: 2,327 SF
- * NEW COVERED DROP-OFF CANOPY WITH RAMPS AND STEPS AS REQUIRED

2

NEW MIDDLE SCHOOL CLASSROOM ADDITION

SCALE: 1/16"=1'-0"



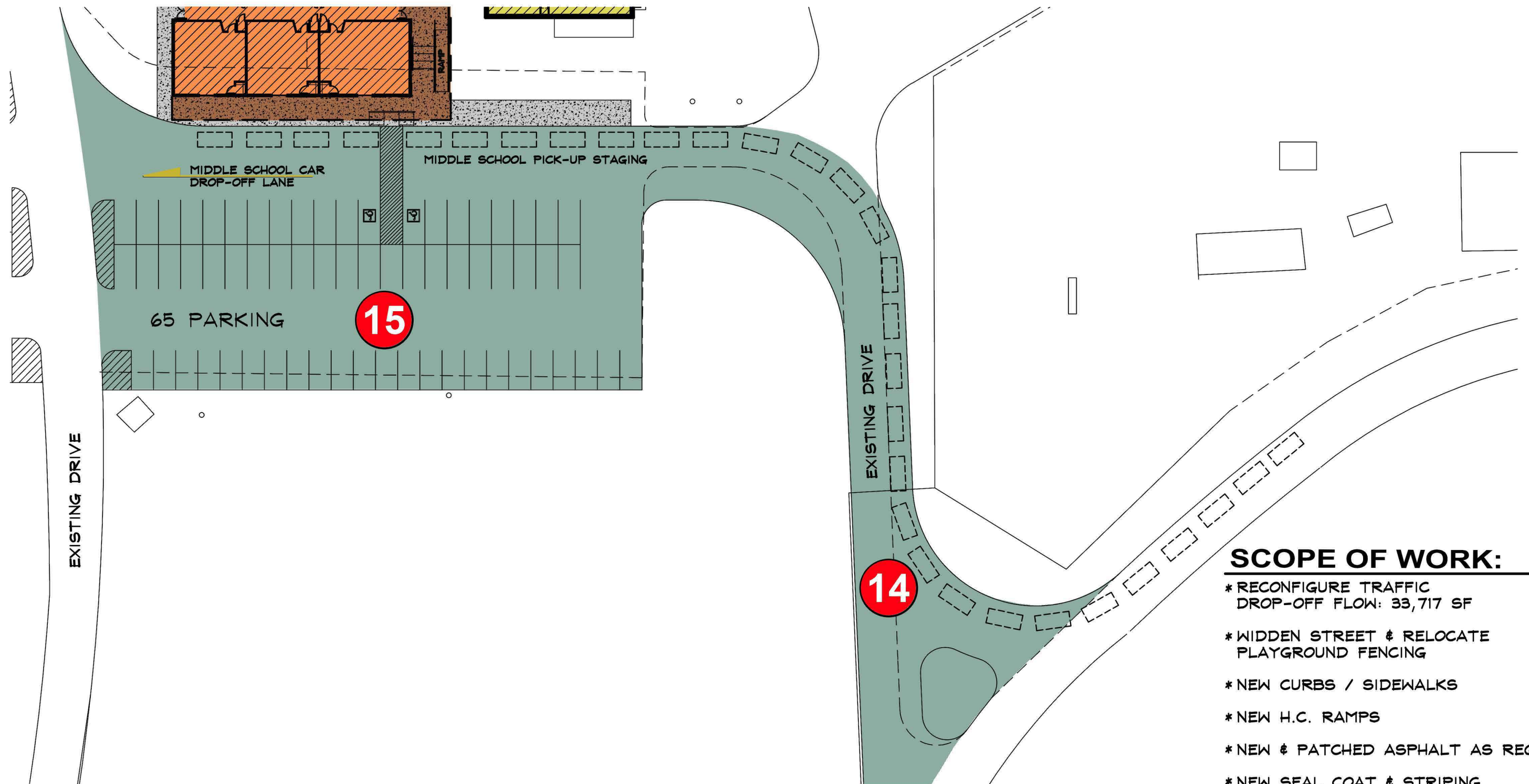


SCOPE OF WORK:

- * DEMOLITION: REMOVE ALL INTERIOR WALLS, M.E.P. & OTHER MISC. ITEMS
- * FINISH OUT: ALL NEW ARCHITECTURAL/ M.E.P. & MISC. ITEMS
- * SQUARE FOOTAGE FOR BAND HALL REMODEL: 2,947 SF
- * BAND HALL: ONE (1)

11 REMODEL M.S. SOUTH WING INTO NEW M.S. BAND HALL
10 NEW MIDDLE SCHOOL COVERED DROP-OFF, SIDEWALK & RAMP
 SCALE: 1/16"=1'-0"





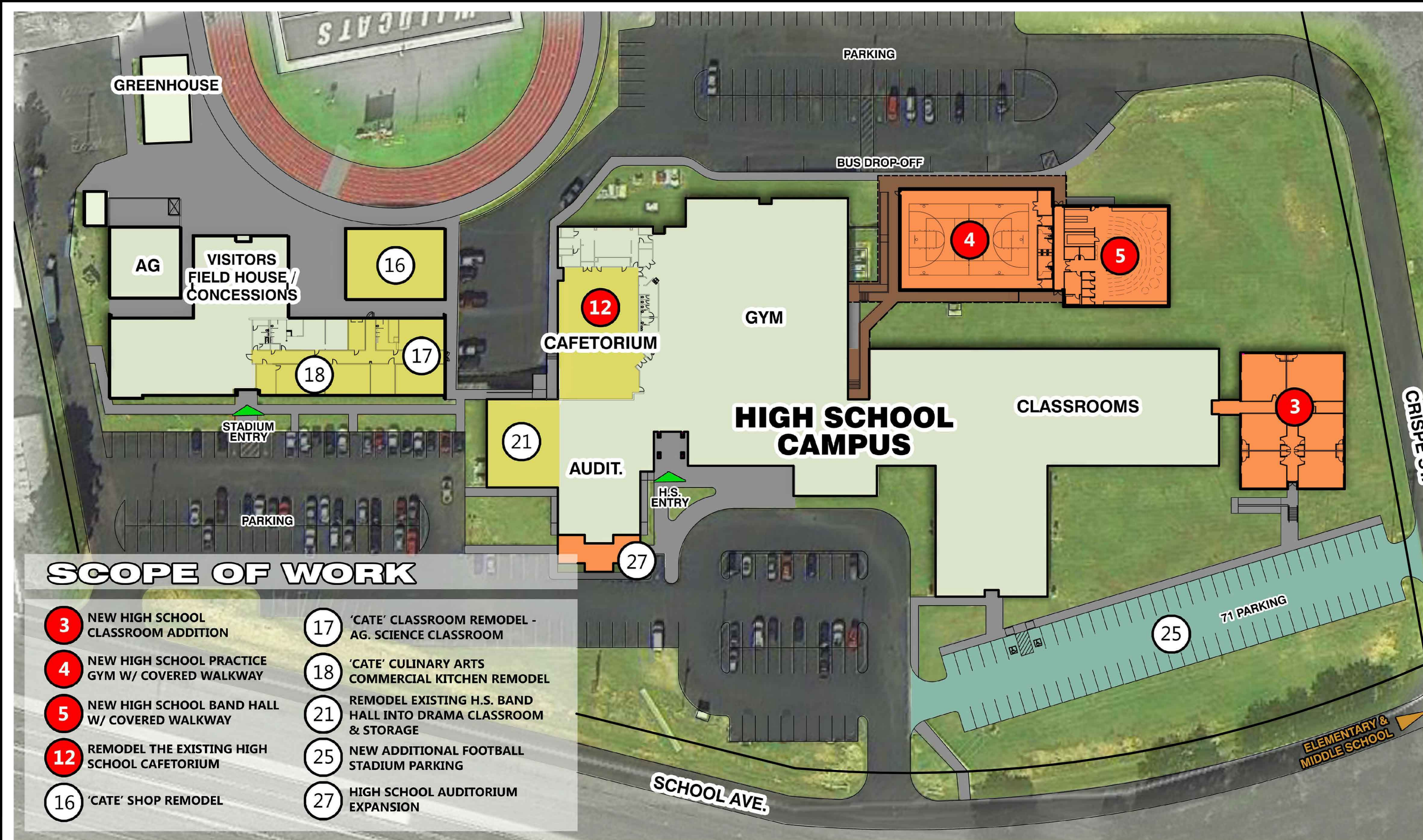
SCOPE OF WORK:

- * RECONFIGURE TRAFFIC
DROP-OFF FLOW: 33,717 SF
- * WIDEN STREET & RELOCATE
PLAYGROUND FENCING
- * NEW CURBS / SIDEWALKS
- * NEW H.C. RAMPS
- * NEW & PATCHED ASPHALT AS REQ.
- * NEW SEAL COAT & STRIPING
- * NEW COVERED DROP-OFF CANOPY
WITH RAMPS AND STEPS AS REQ.

**15 RECONFIGURATION OF THE ELEM. / M.S. PARKING LOT
REMODEL THE DRIVEWAY ENTERING
THE REAR ELEM./ M.S. PARKING LOT**

14 SCALE: N.T.S.



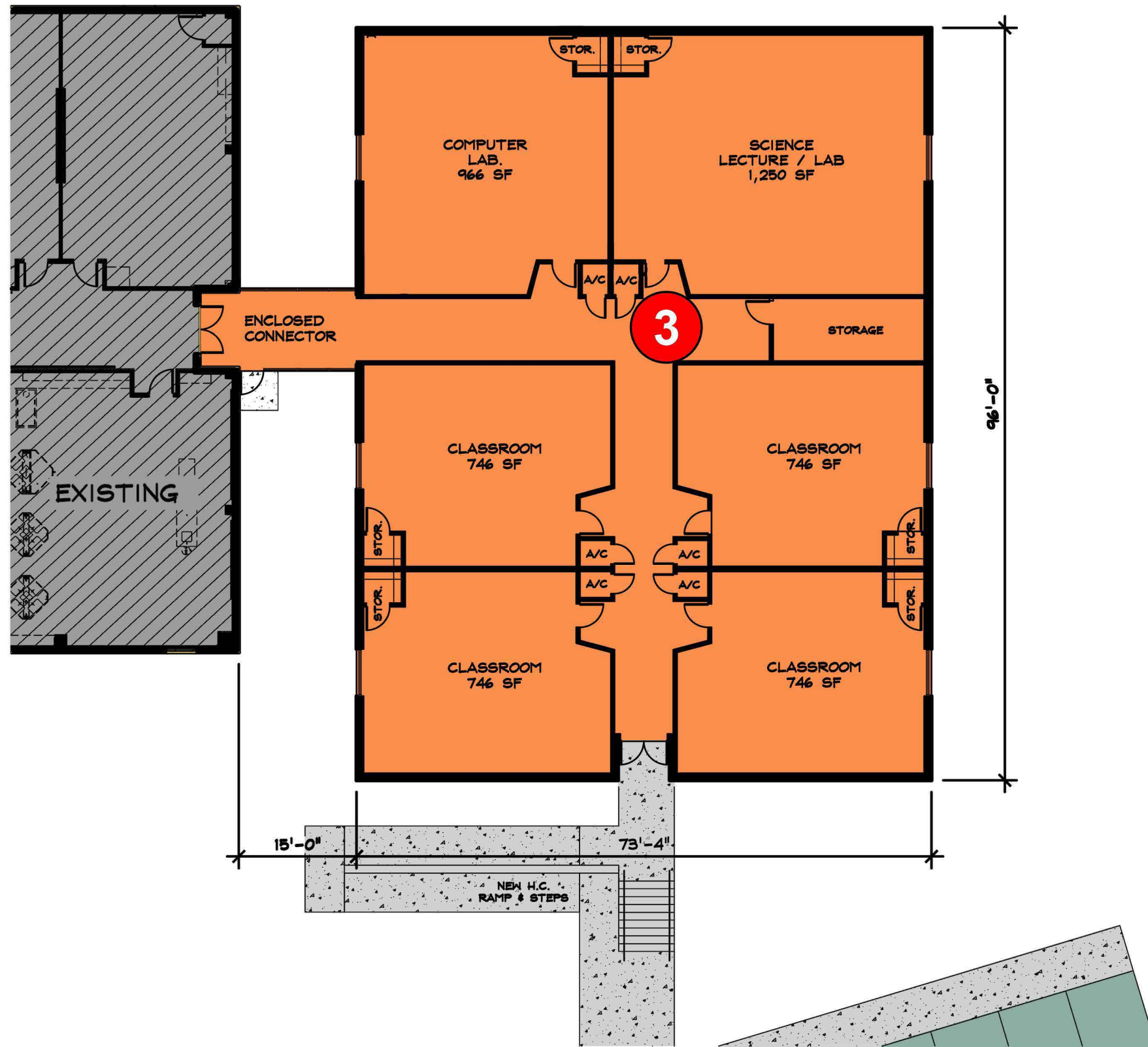


SCOPE OF WORK

- 3** NEW HIGH SCHOOL CLASSROOM ADDITION
- 4** NEW HIGH SCHOOL PRACTICE GYM W/ COVERED WALKWAY
- 5** NEW HIGH SCHOOL BAND HALL W/ COVERED WALKWAY
- 12** REMODEL THE EXISTING HIGH SCHOOL CAFETORIUM
- 16** 'CATE' SHOP REMODEL
- 17** 'CATE' CLASSROOM REMODEL - AG. SCIENCE CLASSROOM
- 18** 'CATE' CULINARY ARTS COMMERCIAL KITCHEN REMODEL
- 21** REMODEL EXISTING H.S. BAND HALL INTO DRAMA CLASSROOM & STORAGE
- 25** NEW ADDITIONAL FOOTBALL STADIUM PARKING
- 27** HIGH SCHOOL AUDITORIUM EXPANSION

HIGH SCHOOL - MASTER PLAN





SCOPE OF WORK:

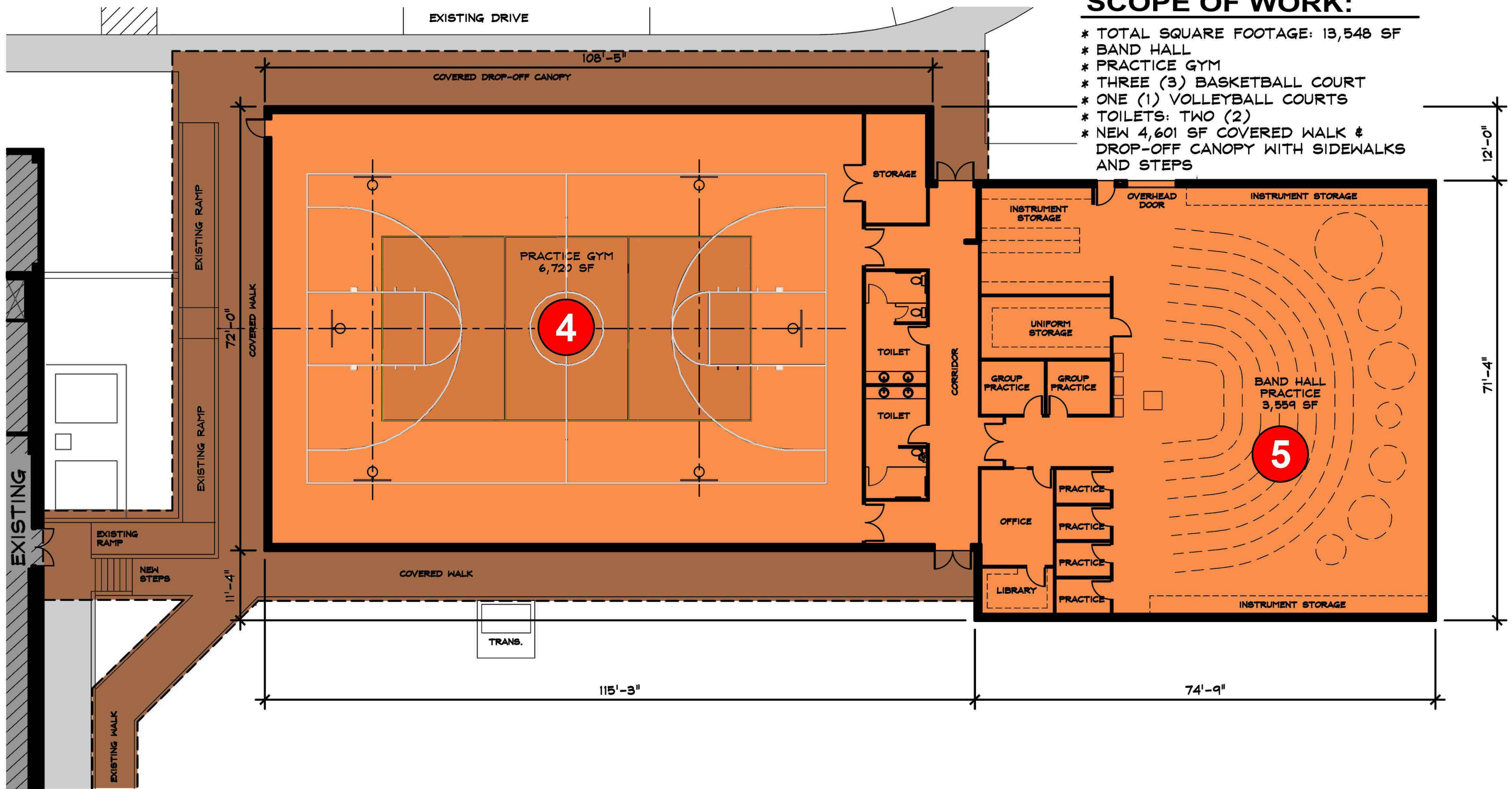
- * SQUARE FOOTAGE: 7,166 SF
- * CLASSROOMS: FOUR (4)
- * COMPUTER LAB: ONE (1)
- * SCIENCE LECTURE / LAB: ONE (1)
- * NEW H.C. RAMPS & STEPS AS REQUIRED

3

NEW HIGH SCHOOL CLASSROOM ADDITION

SCALE: 1/16"=1'-0"



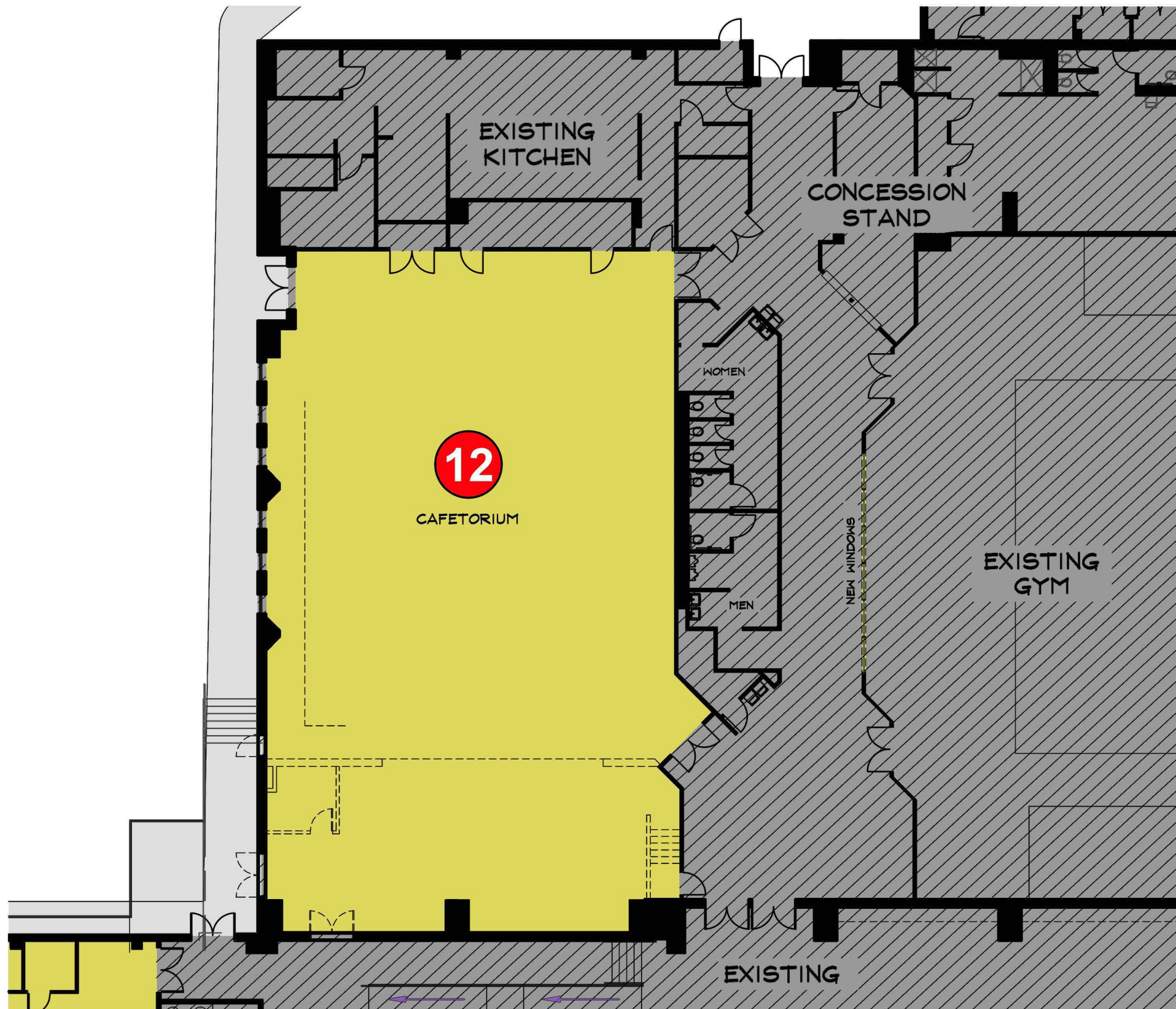


SCOPE OF WORK:

- * TOTAL SQUARE FOOTAGE: 13,548 SF
- * BAND HALL
- * PRACTICE GYM
- * THREE (3) BASKETBALL COURT
- * ONE (1) VOLLEYBALL COURTS
- * TOILETS: TWO (2)
- * NEW 4,601 SF COVERED WALK & DROP-OFF CANOPY WITH SIDEWALKS AND STEPS

- 5** NEW HIGH SCHOOL BAND HALL W/ COVERED WALKWAY
 - 4** NEW HIGH SCHOOL PRACTICE GYM W/ COVERED WALKWAY
- SCALE: 1/16"=1'-0"





SCOPE OF WORK:

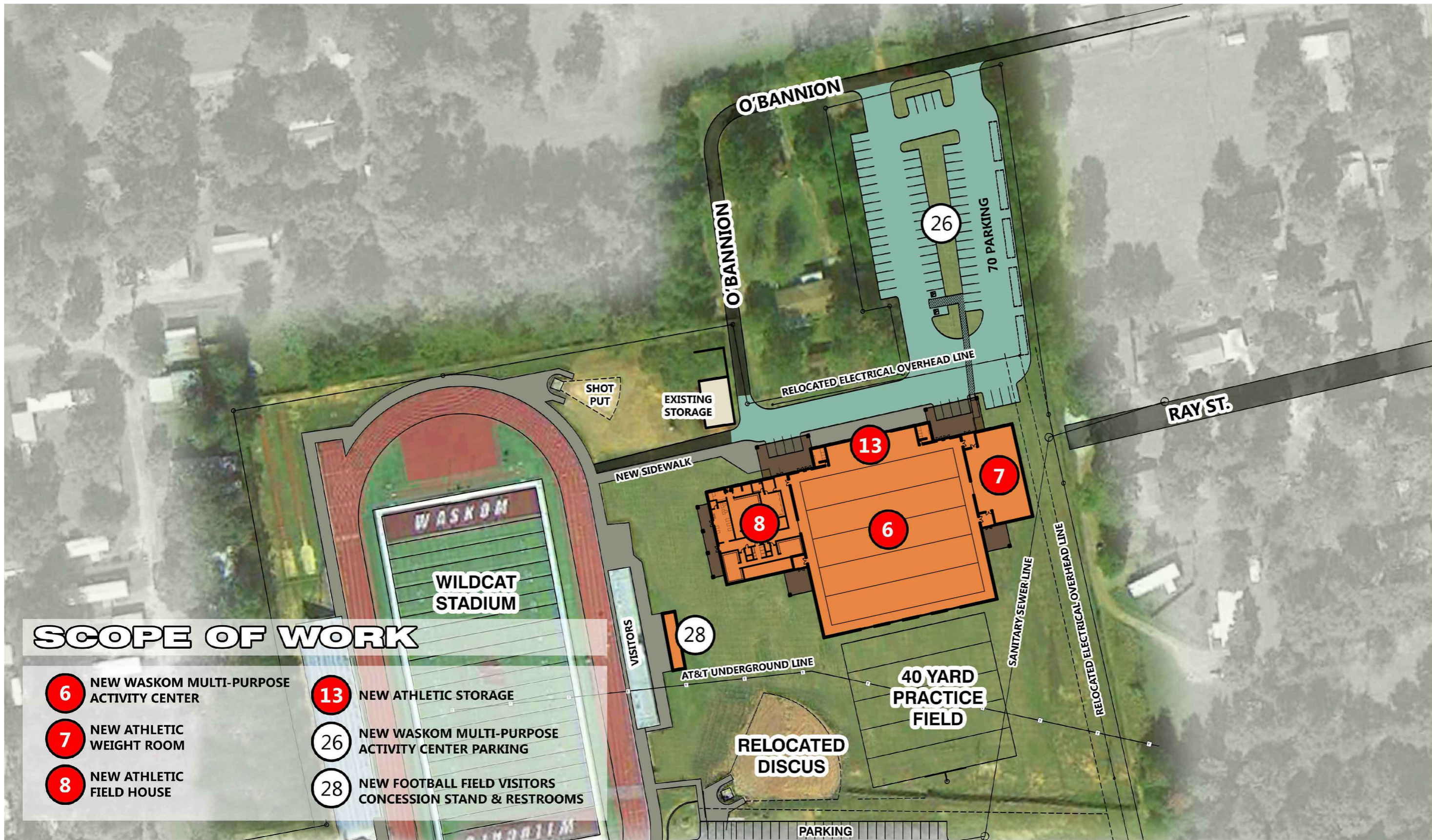
- * DEMOLITION: REMOVE STAGE FROM CAFETERIA, SOME INTERIOR WALLS, M.E.P. & OTHER MISC. ITEMS
- * SQUARE FOOTAGE REMODEL: 5,105 SF
- * FINISH OUT: ALL NEW ARCHITECTURAL/ M.E.P. & MISC. ITEMS
- * NEW WINDOW INTO GYM

12

REMODEL THE EXISTING HIGH SCHOOL CAFETORIUM

SCALE: 1/16"=1'-0"



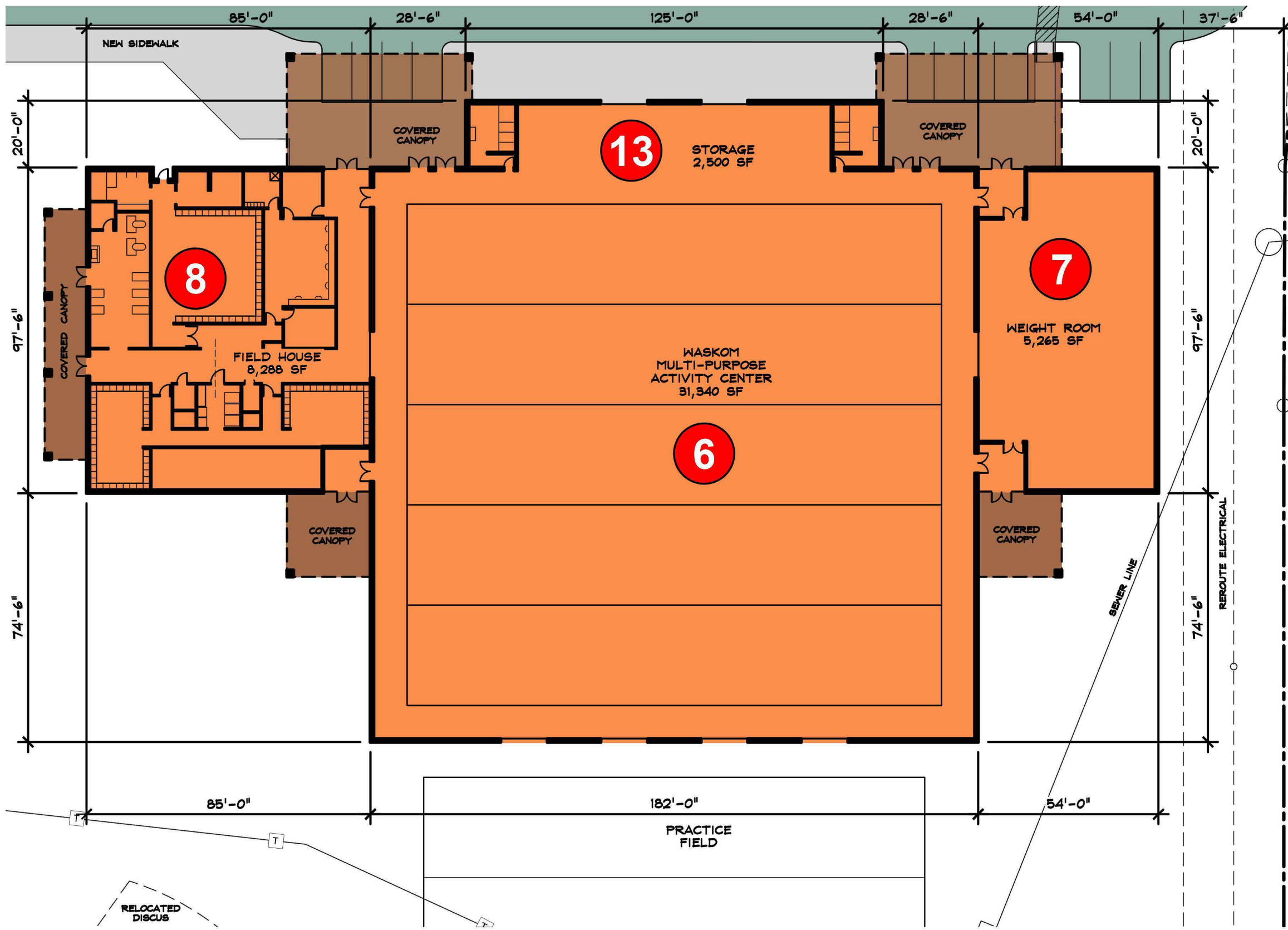


SCOPE OF WORK

- 6 NEW WASKOM MULTI-PURPOSE ACTIVITY CENTER
- 7 NEW ATHLETIC WEIGHT ROOM
- 8 NEW ATHLETIC FIELD HOUSE
- 13 NEW ATHLETIC STORAGE
- 26 NEW WASKOM MULTI-PURPOSE ACTIVITY CENTER PARKING
- 28 NEW FOOTBALL FIELD VISITORS CONCESSION STAND & RESTROOMS

WASKOM MULTI-PURPOSE ACTIVITY CENTER





- SCOPE OF WORK:**
- * NEW MULTI-PURPOSE ACTIVITY CENTER
SQUARE FOOTAGE: 47,357 SF
 - * NEW INDOOR PRACTICE FIELD
 - * NEW WEIGHT ROOM
 - * NEW FIELD HOUSE
 - * NEW STORAGE
 - * NEW CANOPY AREA: 5,882 SF
 - * REROUTE ELECTRICAL NEW SERVICE
 - * RELOCATE DISCUS

6 WASKOM MULTI-PURPOSE ACTIVITY CENTER
 SCALE: 1/32"=1'-0"



08-17-2015