



June 2026 – Board Report

Summer Transition: As the school year winds down we are all hands on deck for our end of year activities but also the transition into summer! A lot of planning and prep goes into this process as we build out our cleaning schedules, project prioritization & coordination, personnel assignments, materials/supplies to be deployed, etc. The summer activities operationally and the work done is critical and demanding, as we turn the buildings around for yet another school year. For example we have 59 Air Handler/Roof Top Units to clean and perform preventative maintenance on, as well as 104 individual classroom unit vents to clean and perform preventative maintenance on. Our custodial crew will deep clean 660,000 square feet before August 14th; including floor cleaning, stripping and refinishing in specific areas. We currently have 58 small-medium sized projects queued up to manage internally amongst our Operations-Maintenance team. There will be no shortage of work this summer.

Bond: Our '26 summer Bond work has begun already with the soccer/future **multi purpose field** breaking ground the first week of June. Our NCE Y5's project is on schedule and will kick off June 8th. Our Operations team will be working this weekend to move all the materials for the teachers and prep for Monday morning project kick off.





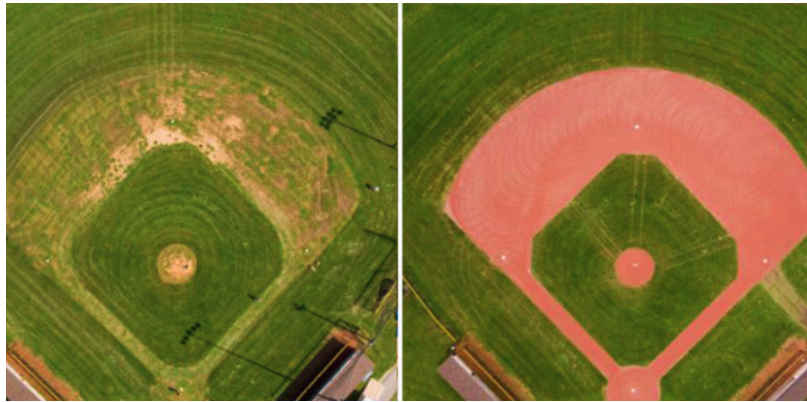
CHELSEA

SCHOOL DISTRICT

OPERATIONS DEPARTMENT

14138 Old US 12
Chelsea, MI 48118
P: 734.433.2276
F: 734.433.2219
www.chelsea.k12.mi.us

Community Ed/ Rec Little League Fields: Sarah Bentley and I have begun meeting with Chelsea Little League leadership and collaboration on current field conditions and a year-to-year cycle on resetting our little league fields used by our students of all levels and the community. This will include new and improved in-ground aluminum "dugout" or team benches, proposed and recommended brand new black vinyl coated back stop fencing on 3 of our current little league fields. Lastly, a full reset on our infields with new infield mix (clay), infield topography, measure and cut infield for proper measurement, and laser grade infield for balanced and safe play. Below is an example of how this could look. This work would, *if approved*, be performed by DuraEdge, our trusted ballfield contractor. Some of our current fields are not as safe or playable as they should be. This would be a great improvement.



GO BULLDOGS!!

My Best,
Ross Potgiesser
Director of Operations