

December 15, 2021
Renewal
Presentation



Who We Are

In 2009, Lighthouse Academies opened its doors to Arkansas families in Jacksonville and surrounding communities. Our educators engage, embrace, and empower every scholar by name and need while working alongside them to develop scholarly habits for success, cultural competencies, and service their communities.

Through challenging and positive learning experiences we prepare scholars to be the next generation of scientists, civic leaders, and social entrepreneurs.

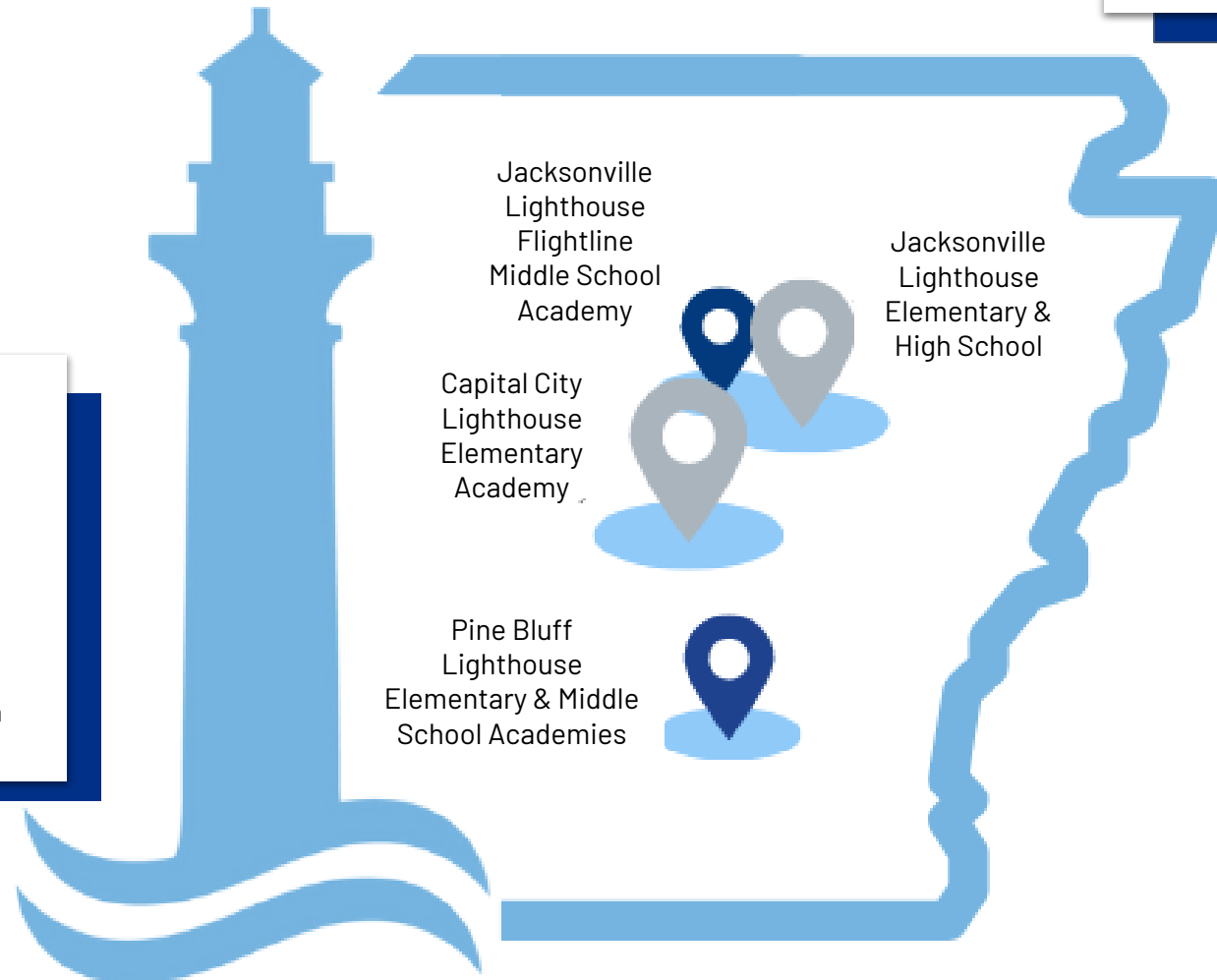


Who We Serve

- **1,060 scholars in grades K-12th**
- **99% Free and Reduced Lunch**
- **11.5% Special Population**
- **5% English Language Learners**

Proudly serving families from Central Arkansas

- North Little Rock
- Jacksonville
- Little Rock
- Sherwood
- Cabot
- Maumelle
- Ward
- Lonoke
- Conway
- Austin
- Beebe
- Pine Bluff
- Althemier
- White Hall
- Wabbaseka
- Sherrill



Our Past

Lighthouse Academies opens Jacksonville Lighthouse Main Campus

Summer
2009

Summer
2011

Lighthouse Academies of Arkansas (LHA Arkansas) opens Jacksonville Flightline and Pine Bluff Lighthouse campuses

LHA Arkansas opens Jacksonville College Preparatory Academy

Summer
2013

Summer
2015

LHA Arkansas opens Capital City campus

Jacksonville Lighthouse College Preparatory Academy's First Graduation Class

Spring
2016

Spring
2017

Jacksonville Lighthouse Charter School Final Renewal Approval



Mission & Goals

Current Mission & Vision

Mission

We prepare our scholars for college through a rigorous arts-infused program.

Vision

All students will be taught by a highly effective teacher in a nurturing environment and will achieve at high levels. Each student will develop the knowledge, skills, and values necessary for responsible citizenship and lifelong learning. The impact of our collective efforts will fundamentally change public education.

Current Charter Goals and Grades

Goals

Goal 1: Narrow ELA Gap



Goal 2: Math LHS vs Local School Districts



Goal 3: NWEA Math and Reading Group



Goal 4: Four-Year Graduation



Goal 5: Four-Year Institution Acceptance

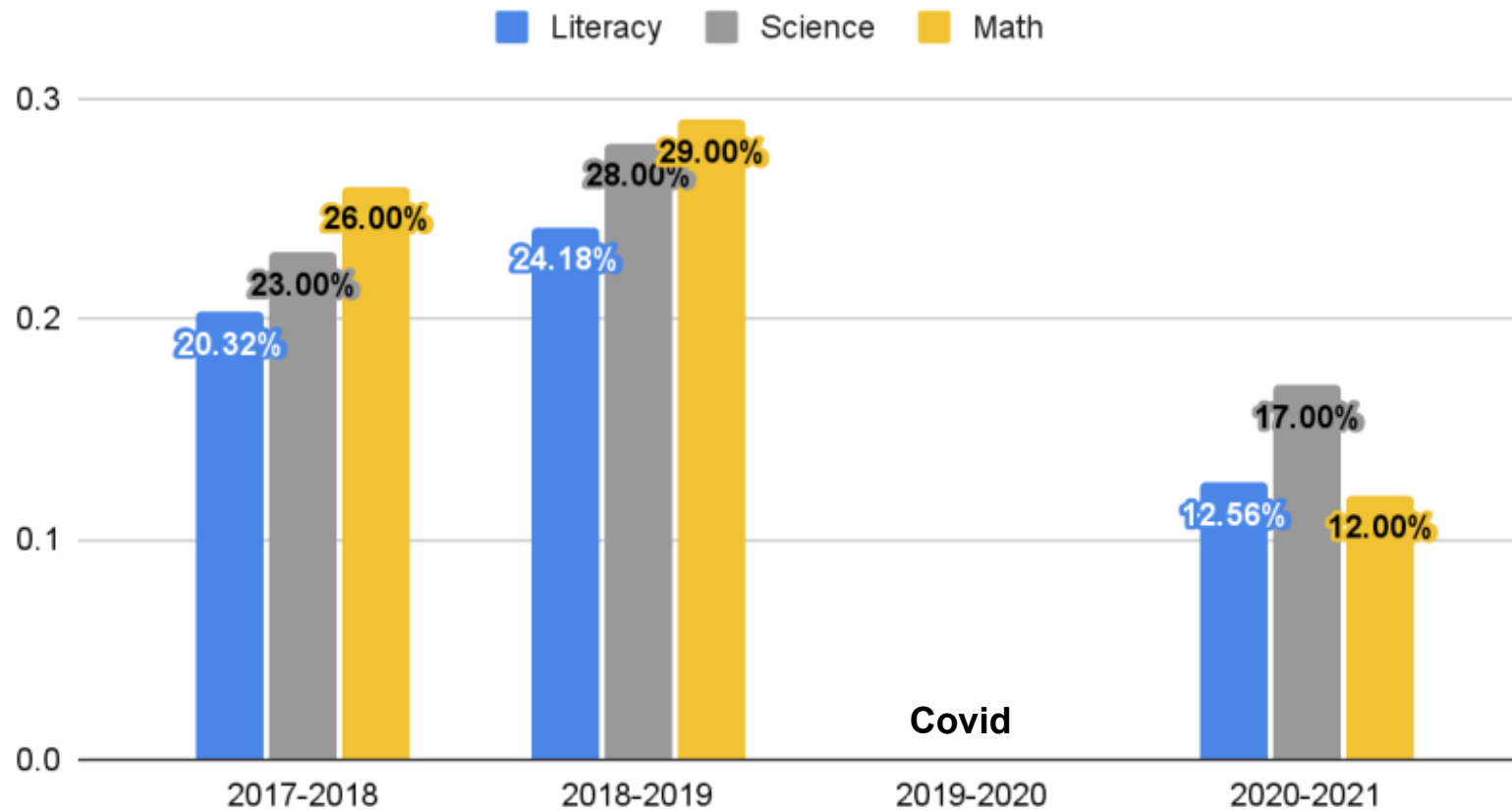


Goal 6: Increase Senior Proficiency



Our Data

5-Year Change Trends



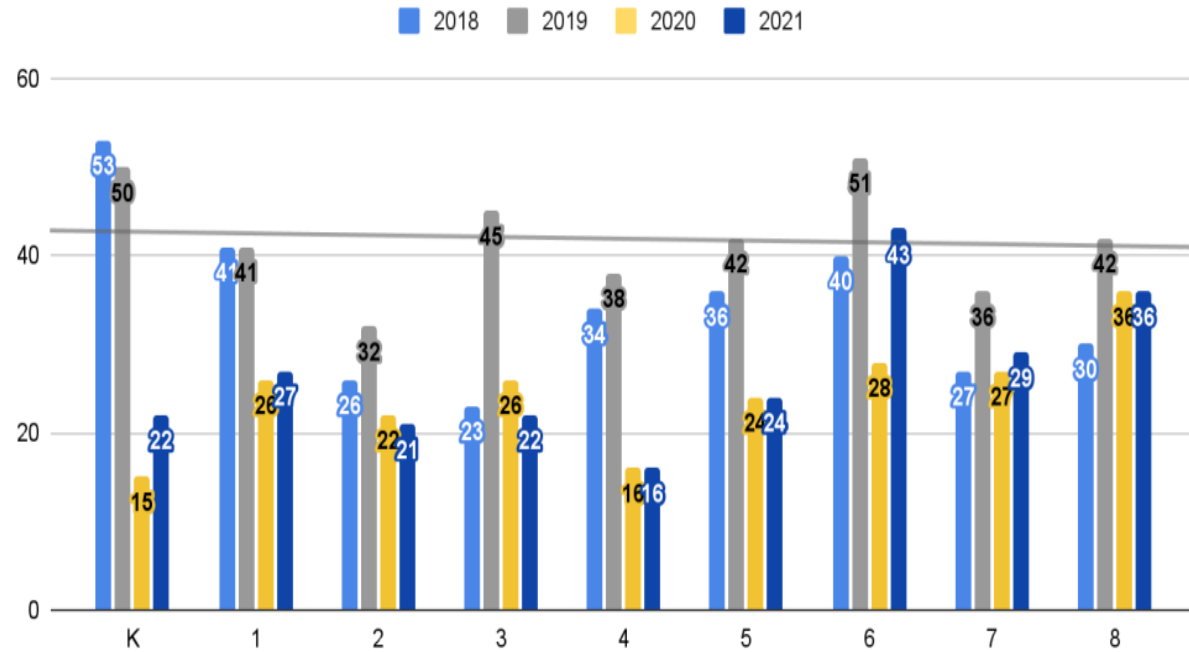
5-Year Change Trends

- **-7.76% Literacy**
- **-6% Science**
- **-14% Math**

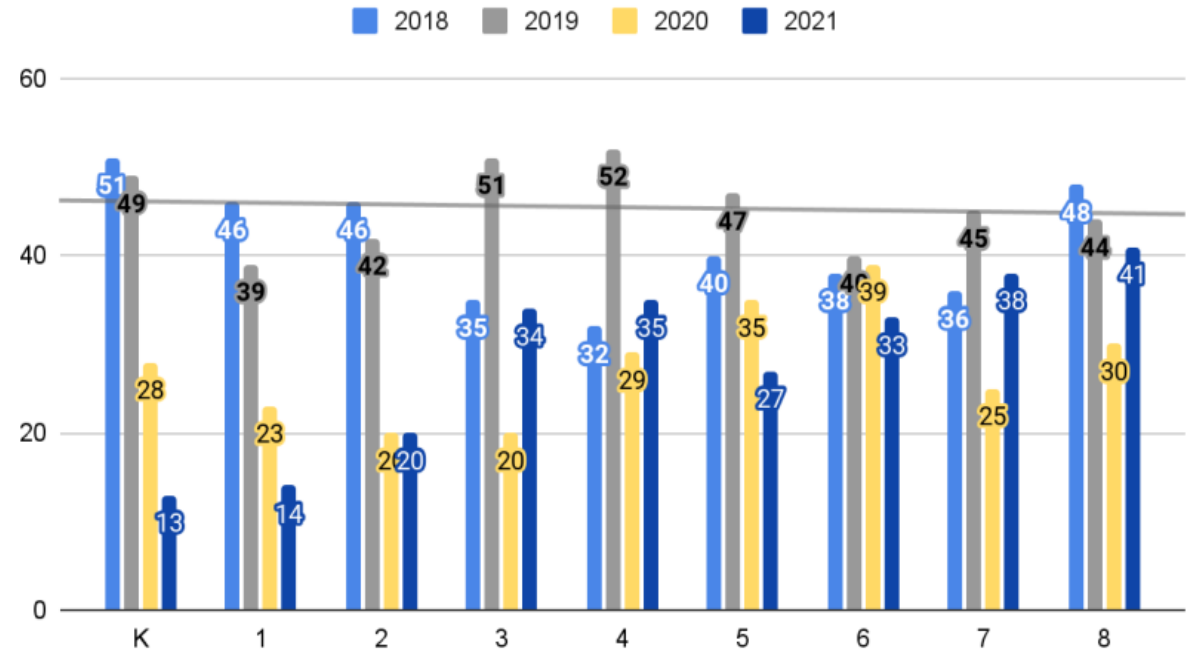


Our Data

NWEA Growth Math



NWEA Growth Reading





Public School Rating **A**



2018-2019 Accountability At-a-Glance

Flightline Upper Academy



BEST HIGH SCHOOLS
& WORLD REPORT
U.S. News
RANKINGS
 2021

#16 in Little Rock, AR

Metro Area High Schools

Our Present

LHA introduces The Design Elements as its adopted Theory of Change to Lighthouse Schools in Arkansas

Spring
2018

Lighthouse Schools in Arkansas implement The Design Elements

Fall
2019

Lighthouse Schools in Arkansas partner with Frontlines of Justice

Summer
2020

Arkansas Lighthouse Academies Consolidation approved by Charter and State Boards

Spring
2021

LHA Arkansas Cultural Competency Program Launched

Arkansas Lighthouse Academies (ALA) Professional Development Charter-Wide Conference

Summer
2021

Arkansas Lighthouse Summer Enrichment Academy



Consolidation & Structure

Jacksonville



Jacksonville
Lighthouse
Elementary Academy

Serves K-6
346 Scholars



Jacksonville
Lighthouse Flightline
Middle School
Academy

Serves 5-8
152 Scholars



Jacksonville
Lighthouse High
School Academy

Serves 7-12
244 Scholars

North Little Rock



Capital City Lighthouse
Elementary Academy

Serves K-5
125 Scholars

Pine Bluff



Pine Bluff Lighthouse
Elementary & Middle
School Academies

Serves K-8
218 Scholars

Design Elements

A photograph of four diverse students in a school garden. They are wearing blue polo shirts and khaki pants. One student is holding a green basket. The garden has wooden raised beds with various plants. The background shows a grassy area and a stone border. The image is overlaid with a semi-transparent white banner at the top and four semi-transparent white circles containing text.

Healthy Relationships

Data-Driven & Rigorous Instruction

Growth Mindset

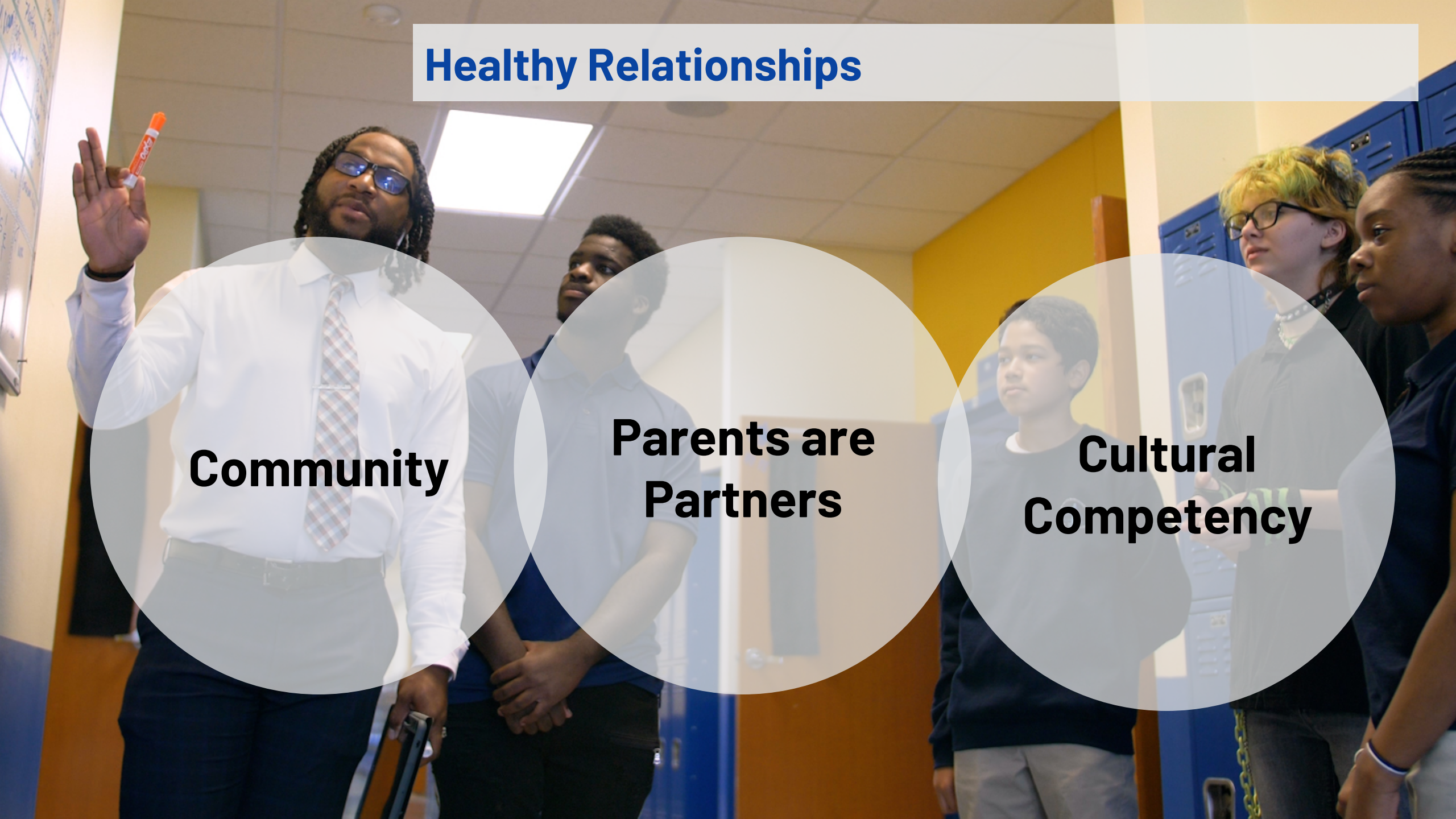
Purpose of School

Healthy Relationships

Community

**Parents are
Partners**

**Cultural
Competency**



Data-Driven & Rigorous Instruction

**Literacy
Proficient**

**Just Right
Instruction**

**Professional
Learning
Communities**



Growth Mindset



**Teacher
Certification**

**Coaching &
Development**

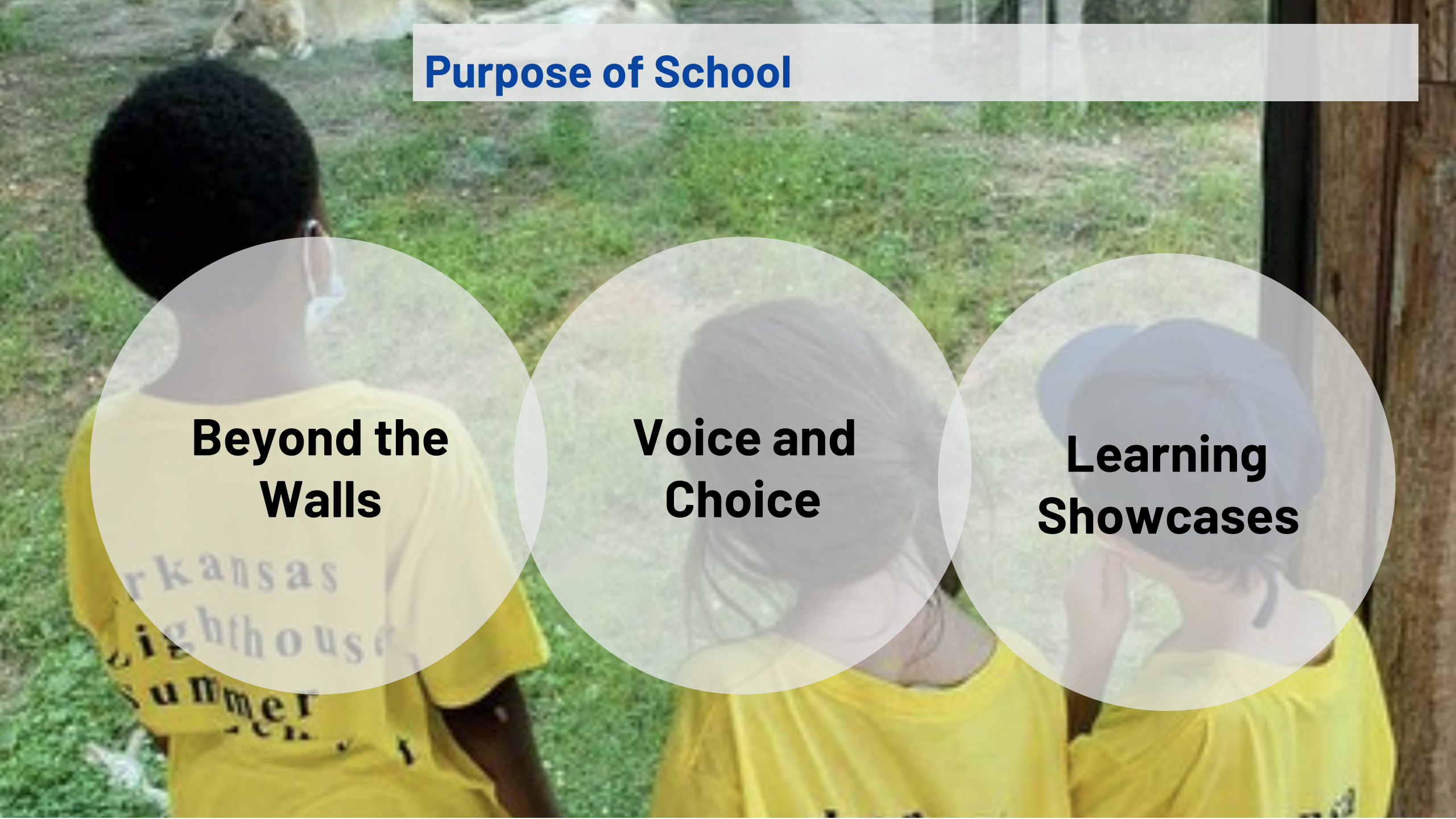
**Calibration
Experiences**

Purpose of School

**Beyond the
Walls**

**Voice and
Choice**

**Learning
Showcases**



Our Future

CAP and State
Approve ALA Five-
Year Renewal

JLHSA implements
Scholar Cultural
Competency Course

ALA Learning Never
Ends, AgSTEM, Public
Service, and Social
Entrepreneurship
Professional
Development Series

ALSEA II Featuring
AgSTEM, Public
Service, and Social
Entrepreneurship
Programs

ALA schools
implement Learning
Never Ends approach

Spring
2022

Spring
2022

Spring/
Summer
2022

Summer
2022

Fall
2022



Mission & Goals

A **NEW** Mission & Vision

Mission

We **engage, embrace,** and **empower** scholars, families, and community members to create a vibrant, supportive, local ecosystem for **ALL** through *education*.

Vision

Arkansas Lighthouse Academies scholars will be **academically sound, technologically savvy, culturally competent,** and **sustainability conscious**.

NEW Goals

Goal: Retain 85% of Scholars

Goal: Stakeholder Satisfaction 85%

Goal: Reading +15%, In Need of Support -30%

Goal: Math and Science +10%, In Need of Support -25%

Goal: 95% Scholars enroll post-secondary school or career

Goal: Licensed or Actively Pursuing License 85%





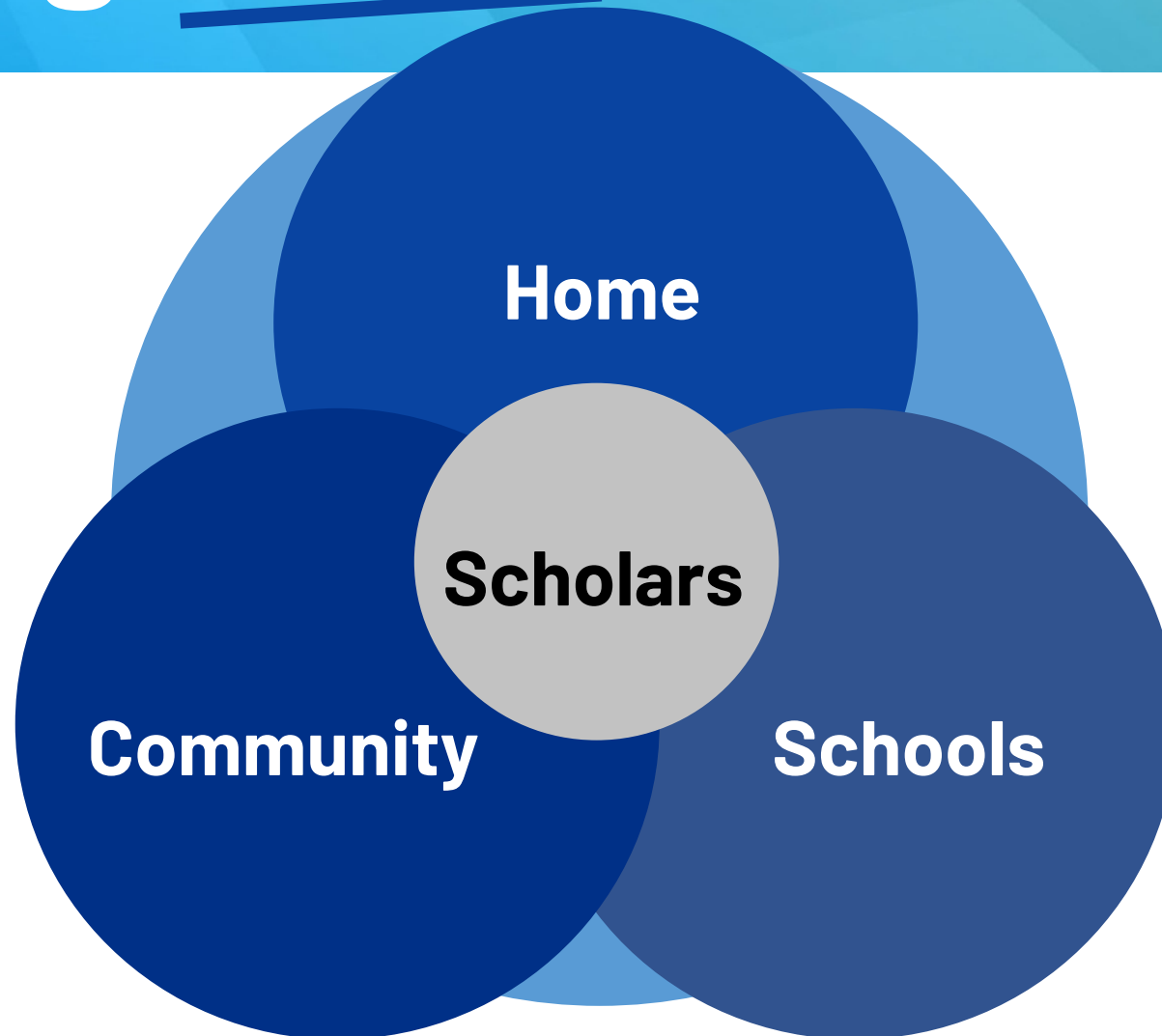
Innovation in Action

**Public
Service**

AgriStem

**Social
Entrepreneurship**

Learning Never Ends



Financial

Fund Balance (Cash on Hand) as of 11.30.21:

Arkansas Lighthouse Academies	\$975,000
Receivables	\$1,000,000
No Audit Findings	





Engage - Embrace - Empower

