



October 10, 2016

TO: Charles Glaes, Superintendent  
Vicksburg Board of Education

FROM: Tonya K. Nash

#### 2015-2016 COMMUNITY EDUCATION ANNUAL REPORT

The 2015-2016 year marked another challenging, busy and exciting year for the Community Education Department. The department continues to make improvements in service delivery, enhancing efficiencies, and provide a high level of customer service. Below is the overview of the Community Education highlights.

Programs and activities in community recreation continue to be well attended. The year-round youth sports programs: basketball, volleyball, tennis, and football average over 500 participants each year. These experiences provide a safe and fun introduction to sports. New leadership at the varsity basketball level, and the addition of Rising Stars girls' and Sharp Shooters boys' leagues, have shown continued growth of youth basketball in Vicksburg.

The youth dance program continues to be a very popular program with three nights of classes all year long and two recitals at the Performing Arts Center. Over 800 enrollments took place throughout the year in this highly successful dance program.

The Kids Klub Before and After School Child Care program finished its 23<sup>rd</sup> season of operation with 236 students participating. Again this past year, sites bumped up against our state licensing maximum requirements. Staff continue to focus on new experiences for children. The Kids Klub staff continued to be enthusiastic, resourceful, creative, and dedicated to providing a quality childcare opportunity to the families of Vicksburg.

Bulldog Beginnings Preschool successfully finished its second year of three full-day classrooms. Forty-eight children had a preschool experience Monday through Friday for 31 weeks. (See attached report)

Summer Camp Wanna Read for Kindergarten, First, Second, and Third graders had a successful summer experience with 75 students having a fun and enriching reading experience.

More than 1,600 Vicksburg students visited the Outdoor Education Center (OEC) last year for seasonal visits.

The Community Education Office continues to orchestrate all facility usage and rentals for the District. Last year over 3,600 reservations were run through the office totaling over 9,600 hours of after-school usage of District facilities. Our Dyncal software has provided us with enhanced back office features, more intuitive for users/viewers and allows people to sync school calendars to their personal calendars. The Department monitors flyer distribution and other forms of student and staff solicitation as the District continues to experience increases in requests.

The District's United Way Campaign contributed \$13,971.00 with 120 people participating.

The *Red & White* production team continues to produce a professional publication with appealing photos and interesting school news. The production team's efforts manifest six superior issues of the *Red & White*. The team includes five building site reporters, Printing Services, and Beckie Miller. With the team's commitment and energy, Vicksburg continues to produce one of the finest newsletters in southwest Michigan, possibly the whole state of Michigan.

The Adult Education High School Completion program had three graduates this past year and many individual student successes. Despite minimal funding from the state of Michigan, Vicksburg continues to provide a valuable educational service to the South County area and one of the few High School Completion programs in Southwest Michigan. The State has reconfigured the Adult Ed Regions and we now report to Calhoun ISD for funding and programming.

The 29<sup>th</sup> Annual Hearty Hustle 5K Walk/Run was held May 14<sup>th</sup> with 329 enthusiastic participants that ran or walked into the Vicksburg Stadium. Vicksburg Community Schools Foundation has provided planning leadership and race day support in this successful community event, where fun and fellowship took first place! Vicksburg Community Education, Bronson Vicksburg Outpatient Center, The Village of Vicksburg, Vicksburg Community Schools Foundation along with volunteers and participants created an amazing display of community spirit and collaboration.

The Community Education staff endeavors to stay active and engaged with the community of Vicksburg. Collaborating and connecting with South County Community Services, United Way, Generous Hands, Vicksburg Community Foundation, Bronson Vicksburg Outpatient Center, the Village of Vicksburg, Vicksburg Historical Society, and the Chamber of Commerce. The annual Community Tailgate Celebration is a prime example of community connecting with the schools.

The Community Education Department continues to support the District's public relations and marketing efforts. The District's web page is one of the best in the area, and has been recently updated to be mobile friendly. It maintains a professional look and relevant information. The District's fan page on Facebook continues to increase in the number of followers and share great happenings in the District. A new District phone app was developed this past spring and summer and is live this year.

With continued support from the community, staff, administration, and the Board of Education, the Vicksburg Community Education Department can capitalize on boundless opportunities to address community issues and do great things to meet the challenges of our community.

**Vicksburg Community Schools  
2015-16 Participation Report**

<u>SUMMER 2015</u>	<u>PARTICIPANTS</u>
Youth Basketball	63
Camp Wanna Read	78
Football	62
Karate	15
Tennis	105
Volleyball	75
TOTAL	<u>398</u>

<u>SCHOOL YEAR</u>	<u>PARTICIPANTS</u>
Youth Basketball Skills	73
Basketball - Rising Stars	32
Basketball - Shooting Stars	27
Busy Bodies	29
Dance and Tumbling	844
Karate	36
Volleyball	36
Young Rembrandts Art	210
TOTAL	<u>1287</u>

<u>SPECIAL PROGRAMS AND EVENTS</u>	<u>PARTICIPANTS</u>
Bulldog Beginnings Preschool	48
Community Tailgate	1000 +
Hearty Hustle	329
Kids Klub	236
Outdoor Education Center	1700 +
TOTAL	<u>3313</u>
<b>GRAND TOTAL</b>	<b><u><u>4998</u></u></b>

TO: Charlie Glaes, Superintendent  
Vicksburg Board of Education  
FROM: Alyssa Thompson  
Tonya Nash  
RE: 2015-2016 Annual Report

### **BULLDOG BEGINNINGS PRESCHOOL**

The Vicksburg Community Schools Bulldog Beginnings Preschool celebrated its sixteenth year of operation. Forty-eight children enrolled, with sixteen at each of the elementary schools. We operated a full day program at each school. The program ran Mondays-Fridays from 9:00 AM to 3:40 PM.

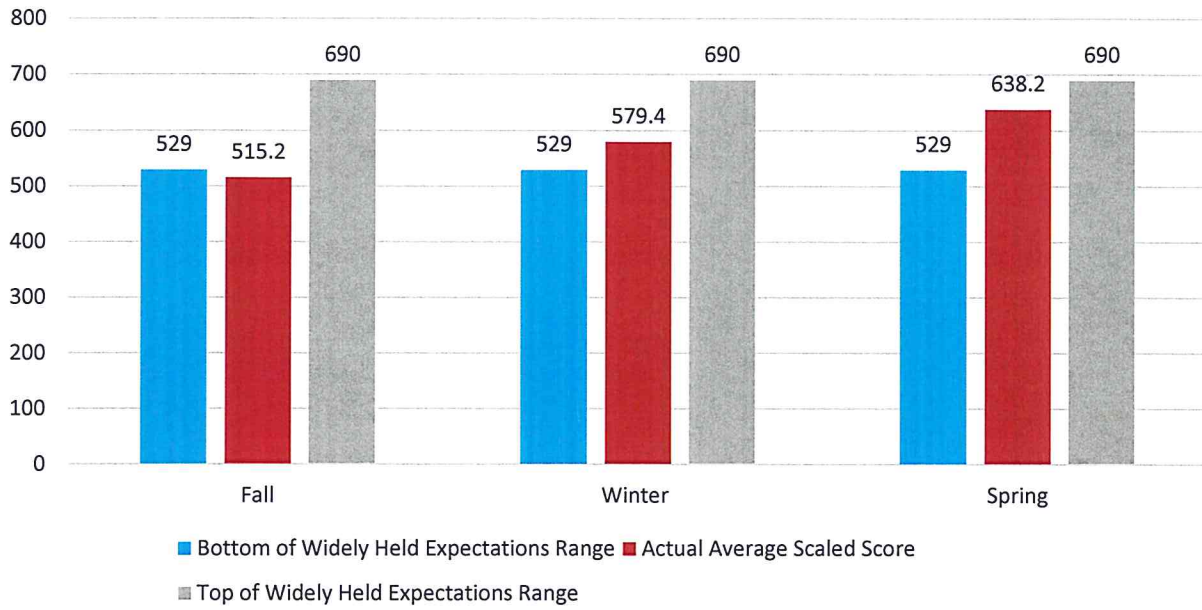
The classroom staff was as follows:

Indian Lake:	AlyssaThompson	Lead teacher
	Kylee Schlabach	Associate teacher
Sunset Lake:	Kim Flathers	Lead teacher
	Alicia Crandall	Associate teacher
Tobey:	Andrea Brady	Lead teacher
	Dot Rowley	Associate teacher

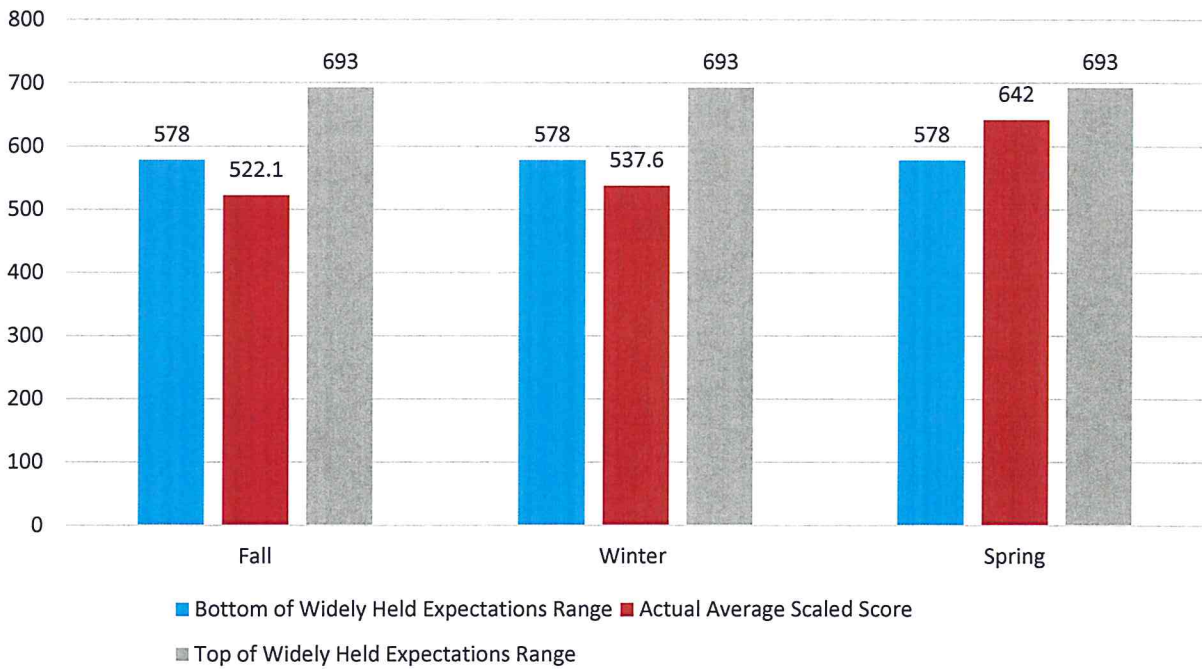
- Forty-one participants were within 250% of the Federal Poverty Level.
- We serviced nine children who had identified speech and language delays and received services on-site through PET.
- We had 100% participation at parent-teacher conferences.

We continue to use the Creative Curriculum as our primary curriculum. We used the Creative Curriculum Gold Developmental Continuum as our research-based performance assessment. As you can see from the attached documents our students demonstrated growth in all developmental domains. Additionally, we administered the PELI for the second year. This is a research project with DMG (Dynamic Measurement Group), authors of DIBELS. This Preschool Early Literacy Indicators assessment tool focused on alphabet knowledge, oral language, vocabulary, and comprehension. This took place mainly in small group settings and all scores demonstrated growth. This data guides our classroom experiences.

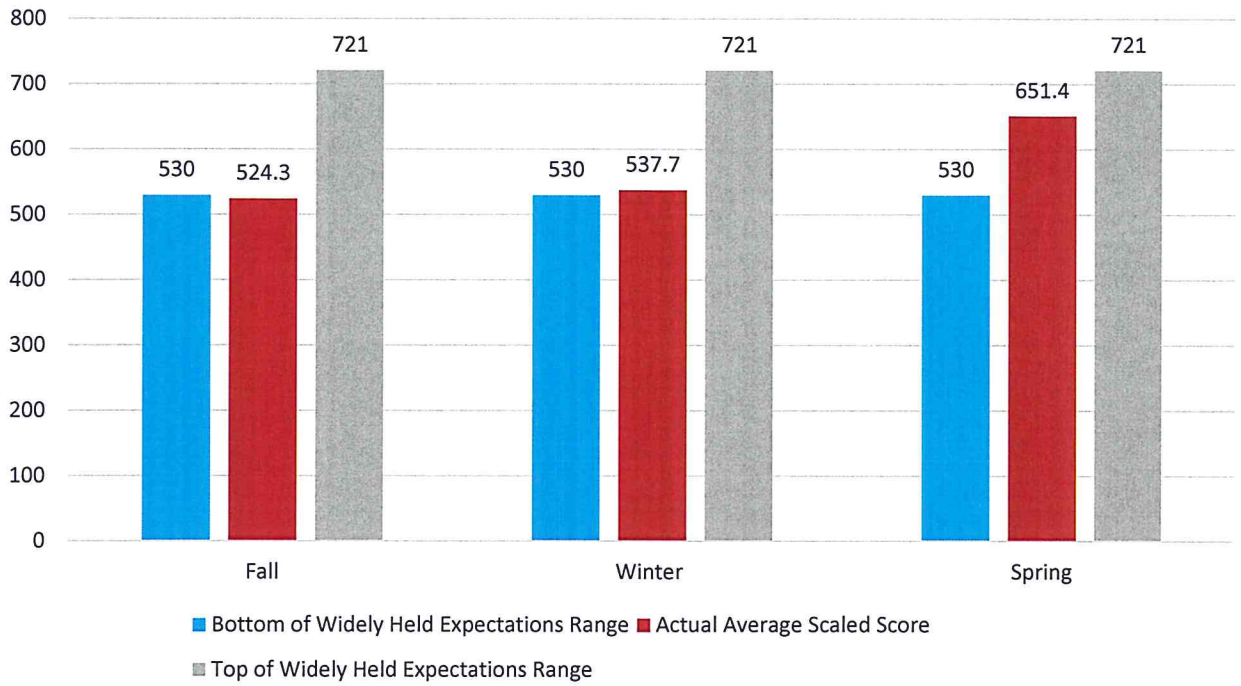
### Social-Emotional



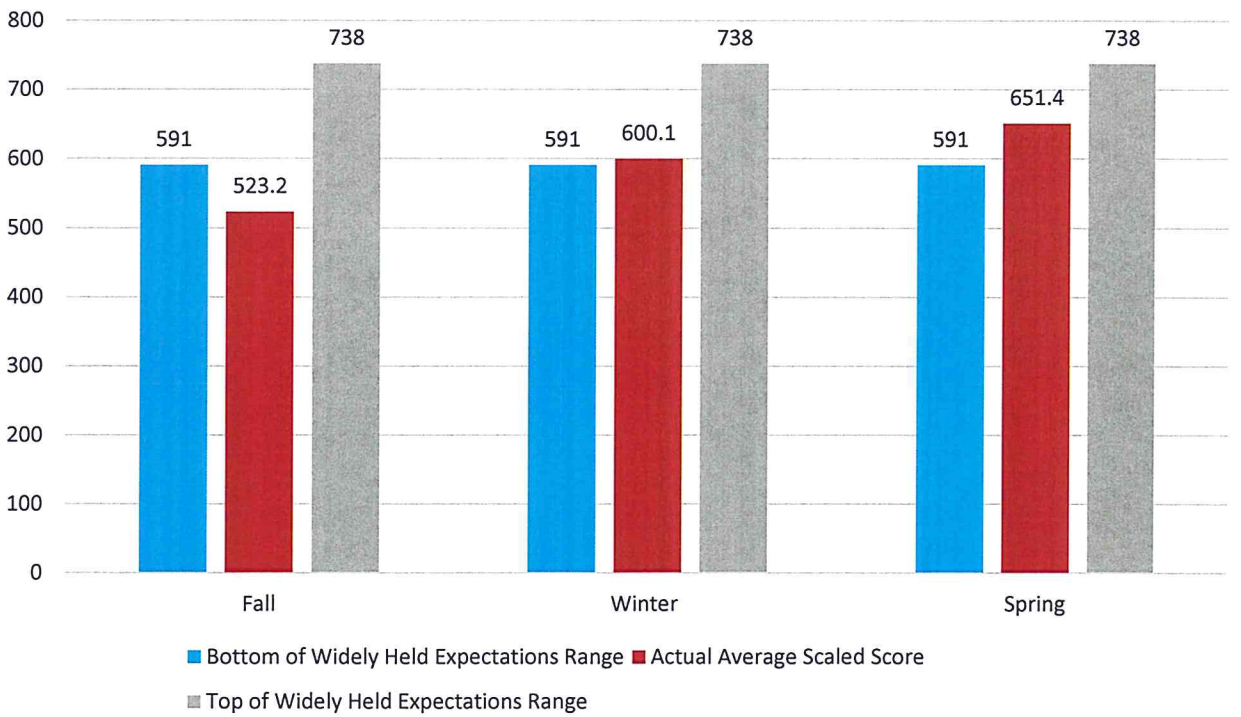
### Physical



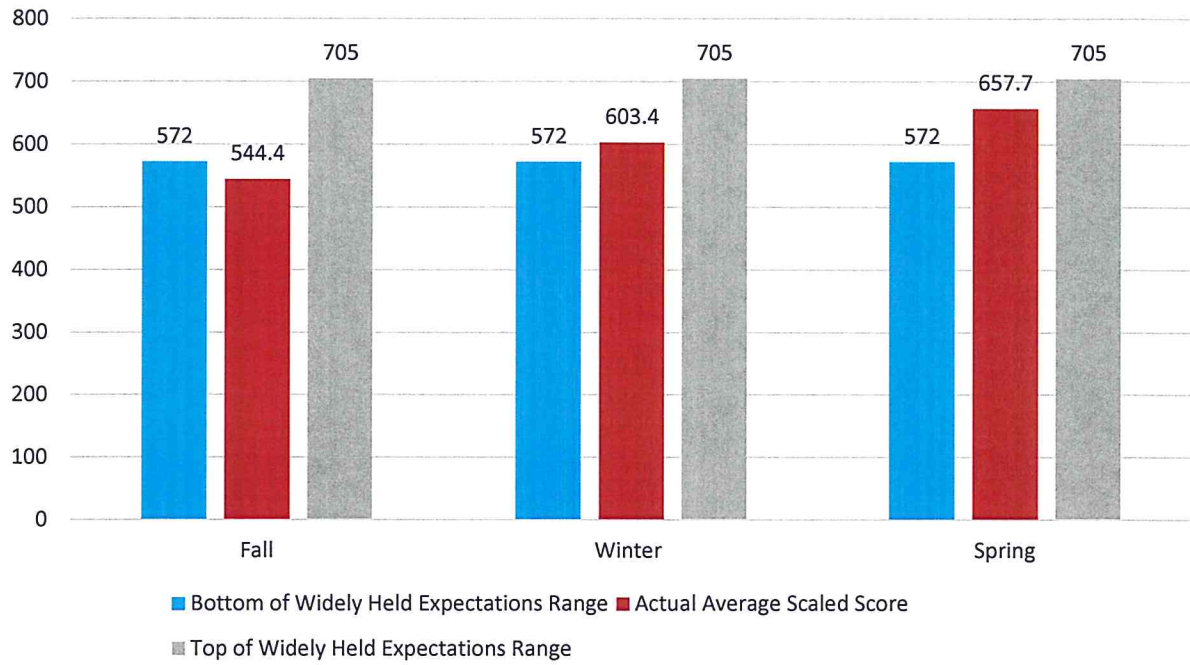
### Language



### Cognitive



### Literacy



### Mathematics





School: Indian Lake  
 Grade: Pre-K (Ages 3-4)  
 Year: 2015-2016  
 Class: Thompson A.M.

### Benchmark Scores Table



PELI

NAME	BEGINNING OF YEAR						MIDDLE OF YEAR						END OF YEAR					
	AK Total	PA Total	VOL Total	COMP Total	Language Index Total	Composite Total	AK Total	PA Total	VOL Total	COMP Total	Language Index Total	Composite Total	AK Total	PA Total	VOL Total	COMP Total	Language Index Total	Composite Total
Student 1	6	2	21	15	132	167	18	6	24	20	159	228	25	15	24	19	148	258
Student 2							17	11	20	18	141	226	26	14	31	21	177	285
Student 3							28	15	23	14	135	250	26	15	25	19	151	263
Student 4	4	10	31	19	174	232	21	15	23	19	153	259	26	15	23	21	153	265
Student 5	24	14	31	16	163	271	25	15	22	21	157	270	25	15	26	21	162	272
Student 6	2	0	23	15	137	157	23	10	26	20	165	256	26	12	26	19	154	254
Student 7	3	0	18	7	94	109	24	13	21	14	129	234	26	15	24	20	152	264
Student 8	22	15	23	16	141	250	25	15	23	21	160	273	26	15	26	21	162	274
Student 9	2	1	19	16	130	152	18	11	22	21	157	244	28	15	23	21	153	265
Student 10	6	2	18	14	120	153	22	13	20	21	152	252	26	15	22	21	150	262
Student 11	5	10	17	17	128	190	19	15	24	19	156	258	26	15	28	21	168	280
Student 12	4	0	16	17	125	147	16	8	18	18	136	208	23	10	21	17	131	217
Student 13	24	13	20	16	133	238	25	15	28	19	167	279	26	15	33	19	175	287
Student 14	9	1	14	17	120	156	20	12	19	18	138	232	20	13	20	18	132	224
Student 15	21	13	26	19	160	260	26	14	29	20	173	283	26	15	26	23	170	282
Student 16	7	0	21	18	143	173	21	13	26	20	165	263	26	12	30	20	170	270
GOAL	1		8	6	62	68	3	1	12	10	87	101	5	2	14	11	100	128
AVERAGE	9.9	5.8	21.3	15.9	135.7	189.6	21.6	12.6	23	18.9	152.7	250.9	25.3	14.1	25.5	20.1	156.8	263.9

At or Above Benchmark / Likely to Need Core Support

Below Benchmark / Likely to Need Strategic Support

Well Below Benchmark / Likely to Need Intensive Support

Sunset  
 Pre-K (Ages 3-4)  
 2015-2016  
 kflathers



### Benchmark Scores Table

PELI

NAME	At or Above Benchmark / Likely to Need Core Support						Below Benchmark / Likely to Need Strategic Support						Well Below Benchmark / Likely to Need Intensive Support					
	BEGINNING OF YEAR		MIDDLE OF YEAR		END OF YEAR		BEGINNING OF YEAR		MIDDLE OF YEAR		END OF YEAR		BEGINNING OF YEAR		MIDDLE OF YEAR		END OF YEAR	
	AK Total	PA Total	VOL Total	COMP Total	Language Index Total	Composite Total	AK Total	PA Total	VOL Total	COMP Total	Language Index Total	Composite Total	AK Total	PA Total	VOL Total	COMP Total	Language Index Total	Composite Total
Student 1	11	0	18	14	120	156	23	2	19	19	142	205	25	10	20	20	140	230
Student 2	20	0	20	16	133	186	26	13	24	20	159	267	25	15	32	19	172	282
Student 3							14	0	19	16	131	171	26	15	25	19	151	263
Student 4	1	0	13	18	121	135	2	11	21	17	140	188	5	5	19	20	137	167
Student 5	2	0	21	13	124	142	2	4	25	16	147	181	3	5	25	19	151	177
Student 6	3	0	17	16	124	144	13	5	18	19	139	196	25	15	14	20	122	232
Student 7	10	0	24	21	162	186	22	15	27	19	164	271	22	15	27	21	165	269
Student 8	4	0	22	19	149	174	25	14	20	17	137	247	26	15	27	19	157	269
Student 9																		
Student 10	5	0	18	9	101	121	21	10	19	11	113	202	22	13	21	16	127	223
Student 11	3	0	24	16	144	166	5	7	24	14	137	187	10	5	21	18	135	175
Student 12	25	0	12	19	121	184	26	15	20	15	130	245	26	15	17	19	127	239
Student 13	11	0	16	11	103	136	15	5	17	11	106	166	18	10	9	18	99	175
Student 14	8	0	22	22	160	191	23	5	24	19	156	229	24	10	19	19	133	221
Student 15	5	0	19	16	130	154	16	11	22	22	161	244	20	10	22	17	134	214
Student 16	16	10	24	18	151	231	26	12	26	21	168	272	26	15	24	16	136	248
Student 17	22	0	23	14	134	190	26	15	26	19	161	275	26	15	21	19	139	251
GOAL	1		8	6	62	68	3	1	12	10	87	101	5	2	14	11	100	128
AVERAGE	9.7	0.7	19.5	16.1	131.8	167.1	17.8	9	21.9	17.2	143.2	222.3	20.6	11.8	21.4	18.7	139.1	227.2

The PELI Composite Score and Language Index scores are adjusted so that the scores are equivalent across PELI books.

School: Tobey  
 Grade: Pre-K (Ages 3-4)  
 Year: 2015-2016  
 Class: avandyk



Benchmark Scores Table

PELI

NAME	BEGINNING OF YEAR						MIDDLE OF YEAR						END OF YEAR					
	AK Total	PA Total	VOL Total	COMP Total	Language Index Total	Composite Total	AK Total	PA Total	VOL Total	COMP Total	Language Index Total	Composite Total	AK Total	PA Total	VOL Total	COMP Total	Language Index Total	Composite Total
	▲																	
Student 1	11	0	12	15	107	141	24	4	20	9	107	182	24	15	26	17	146	254
Student 2	5	0	8	8	69	85	23	0	13	10	88	142	22	13	30	16	154	250
Student 3	5	0	12	8	81	98	18	8	20	10	112	189	26	13	25	14	131	235
Student 4	5	0	8	8	69	85	10	0	17	9	97	121	22	13	22	17	134	230
Student 5	15	6	14	13	105	172	24	15	19	11	113	225	24	15	25	19	151	259
Student 6	1	0	4	3	40	43	1	0	9	7	61	62	3	0	22	16	130	196
Student 7	24	8	9	4	57	146	25	12	15	6	77	188	26	15	19	15	117	229
Student 8	22	0	11	14	100	157	25	9	16	9	94	190	26	13	22	15	126	230
Student 9	18	4	8	8	69	128	22	15	18	13	117	226	24	15	26	16	142	250
Student 10	18	0	7	11	78	123	25	10	18	8	96	196	25	15	28	15	138	248
Student 11	3	1	8	9	73	90	5	3	13	11	93	119	8	4	20	16	124	156
Student 12																		
Student 13	20	14	20	12	118	221	25	9	18	8	96	192	26	15	31	17	161	273
Student 14	17	10	14	16	116	200	23	12	28	13	145	244	26	15	27	21	165	277
Student 15	14	0	8	4	55	87	24	8	13	16	115	202	26	15	31	19	169	281
Student 16	17	7	15	15	115	188	24	13	21	14	129	234	24	12	31	19	169	265
GOAL	1		8	6	62	68	3	1	12	10	87	101	5	2	14	11	100	128
AVERAGE	12.9	3.3	10.5	9.9	83.5	130.8	19.9	7.9	17.2	10.3	102.7	180.8	22.1	12.5	25.5	16.8	143.8	236.2

▲ At or Above Benchmark / Likely to Need Core Support    ■ Below Benchmark / Likely to Need Strategic Support    ■ Well Below Benchmark / Likely to Need Intensive Support