

Req Nbr: 109886

PO Nbr:

Req Total: 15,775.87

Date Request: 02-17-2022

Date Required: 02-17-2022

Priority: R - Regular

Work Order:

Freight Cost: .00

Vendor Notes:

Comments: Cafeteria tables will be for H4.

Originator: 001527 - SanJuanita Anna Lugo

Requestor: 001527 - SanJuanita Anna Lugo

Order For: CENTRAL KITCHEN

Reason: Tables for H4 cafeteria

Campus/Dept: 997 - CENTRAL KITCHEN

Credit Card Code:

Reference Nbr: 997

Req Per: 02

Sort Key/Vendor Name: The Edu-Source Corporation / Th

Vendor Nbr: 03552

Shipping Addr: CENTRAL KITCHEN - CENTRAL KI

Bid Category:

Bid Nbr:

Confirm Only: ☐

Attachments: ☐

COPY

Item	Unit of Issue	Quantity	Unit Price	SubTotal	Discount %	Discount Am	Freight Elig	Freight %	Freight Amt	Total
001	EA	8.00	1,671.76000	13,374.08	.00%	.00	<input checked="" type="checkbox"/>	.00%	.00	13,374.0

Description: President Table with 12 stools

Long Description:

Catalog Nbr:

Commodity: UNGROUPED

Status:Y - Approved

Note:

Account Code	Description	Balance Amt	Pct	Amour
101-35-6499.00-998-299000	MISC. OPERATING EXPENSE	-2,531.63	100.000%	13,374.0
Total:				13,374.0

Item	Unit of Issue	Quantity	Unit Price	SubTotal	Discount %	Discount Am	Freight Elig	Freight %	Freight Amt	Total
002	EA	1.00	531.20000	531.20	.00%	.00	<input checked="" type="checkbox"/>	.00%	.00	531.2

Description: Surcharge

Long Description:

Catalog Nbr:

Commodity: UNGROUPED

Status:Y - Approved

Note:

Account Code	Description	Balance Amt	Pct	Amour
101-35-6499.00-998-299000	MISC. OPERATING EXPENSE	-2,531.63	100.000%	531.2
Total:				531.2

Item	Unit of Issue	Quantity	Unit Price	SubTotal	Discount %	Discount Am	Freight Elig	Freight %	Freight Amt	Total
003	EA	1.00	1,870.59000	1,870.59	.00%	.00	<input checked="" type="checkbox"/>	.00%	.00	1,870.5

Description: Delivery charge

Long Description:

Catalog Nbr:

Commodity: UNGROUPED

Status:Y - Approved

Note:

Account Code	Description	Balance Amt	Pct	Amour
101-35-6499.00-998-299000	MISC. OPERATING EXPENSE	-2,531.63	100.000%	1,870.5
Total:				1,870.5

The Edu-Source Corp.
P.O. Box 691948, San Antonio, TX 78269
Phone (800) 258-8559 Fax (210) 699-4386

✓

HORIZON MONTESSORI PUBLIC SCHOOLS -
PEARLAND
2319 N GRAND BLVD
PEARLAND, TX 77581

DATE:
11/19/2021

#109886

QUOTE

Qty	Item	Spec/Size	School Unit Price	School Extended Price
MOBILE FOLDING				
8	PRESIDENT TABLES	PRESIDENT TABLE WITH 12 STOOLS TOP TABLE LAMINATE: TBD COMFORT STOOL COLOR: TBD CASTER COLOR: TBD FRAME: POWEDER COATED	\$1,671.76	\$13,374.08
	COVID 19 SURCHARGE BY MANUFACTURER		\$531.20	\$531.20
		PRODUCT TOTAL		\$13,905.28
FIELD SERVICE				
	DELIVERY		\$1,870.59	\$1,870.59
	CHOICE PARTNER VENDOR	CONTRACT TOTAL		\$15,775.87
***PLEASE SEND ANY CORRESPONDANCE FOR THIS QUOTE TO pricing@edusourcecorp.com				

 COPY

Cafeteria
Tables
#4810
Feb. Buy Board
1295 firm

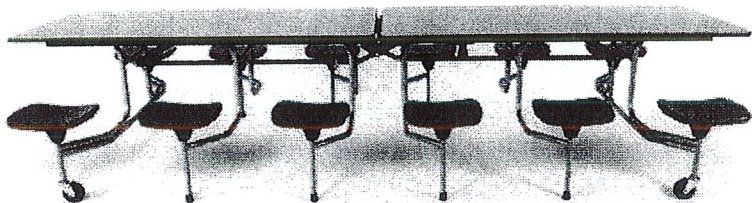
Leah
Alex Rios / Mari Rodriguez
210-699-4268

table top: blue/gray black trim
Seats blue

President (Approximately 12 Ft.)

Model #: TTR61
TTN61

HSIA
STEEL



Length..... 12 Feet (366cm)
Width..... 30 Inches (76cm)
Height..... 27" or 30"
Weight..... 206-213 lbs* (93-97kg)
Seating Capacity..... 12 or 8
Stool Option..... Round or Comfort
Color Options..... ALL
ADA Compliant..... YES

Prepster (Approximately 12 Ft.)

Model #: TTP61

HSIA
STEEL



Blue

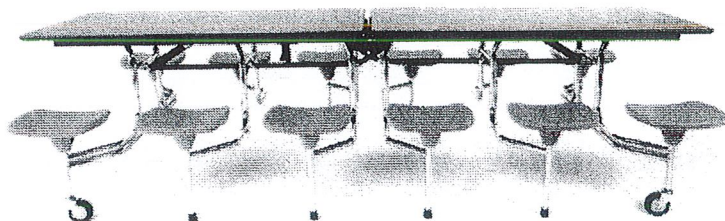
* COMFORT STOOL NOT AVAILABLE

Length..... 12 Feet (366cm)
Width..... 30 Inches (76cm)
Height..... 26" or 28"
Weight..... 227 lbs (103kg)
Seating Capacity..... 16
Stool Option..... Round
Color Options..... ALL
ADA Compliant..... NO

Senior (Approximately 10 Ft.)

Model #: TTC61

HSIA
STEEL



Length..... 10 Feet (305cm)
Width..... 30 Inches (76cm)
Height..... 27" or 30"
Weight..... 188-195 lbs* (85-88kg)
Seating Capacity..... 12
Stool Option..... Round or Comfort
Color Options..... ALL
ADA Compliant..... NO

* Weight dependent on type of stool selected

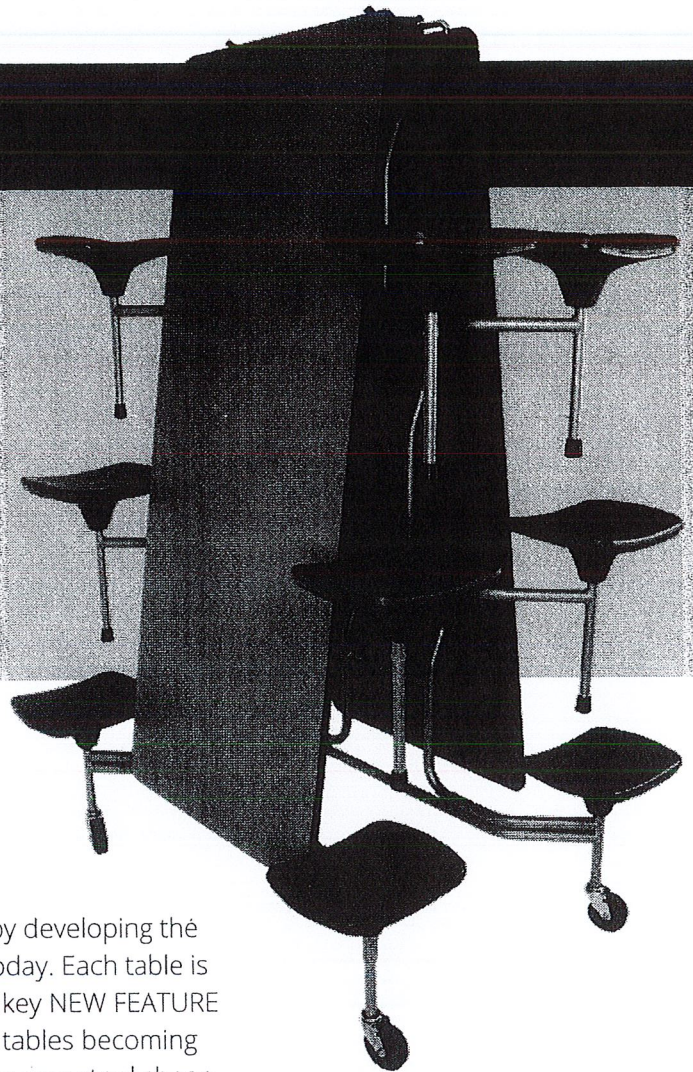




SICO® TC-65 Series

EASY LIFTING TABLES.
FOREVER.
GUARANTEED.

LIMITED
LIFETIME
WARRANTY



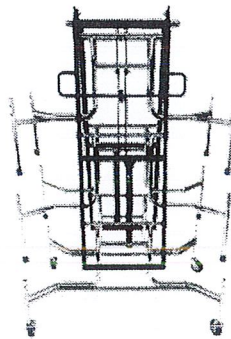
The Lightest Weight Table in the Industry.

SICO® has done it AGAIN! Leading the way in innovation by developing the next generation of tables for the way schools use them today. Each table is a system with each piece engineered to work together. A key NEW FEATURE is the **EXCLUSIVE SICO® Strut™** as a lift assist. No more tables becoming harder to lift over time EVER! Plus new color options and a new stool shape allowing you to create just the right look for your school's environment. Plus nearly 20% lighter than before!



SICO® Strut™

Lift assist. No loss of power.
No maintenance.
No more heavy tables over time.



HSLA Steel Legs

High Strength Low Alloy steel.
Lighter and stronger. Double the
yield strength of competitive tables.



Comfort Stools*

(Optional Accent Guard*)
Designed for comfort and
easy maintenance.

* Patents Pending



Features, Advantages & Benefits

The Lightest Table in the Industry*

Each table is a complete system of unique elements specifically engineered to work in harmony, creating a table effortless to operate with color options to create the perfect look for your school.

Table Top

UltraLight MDF Core Table Top: Made with extremely durable 18mm MDF manufactured using 100% fresh pine fiber. Stronger than plywood or particleboard, is ultra light-weight, and resists warping.

High-Pressure Laminate: Tough .040" (.10cm) thickness high-pressure laminate for added durability and long-term wear. Nearly 200 standard colors and patterns are available to fit any cafeteria decor.

Rigid Vinyl Backer Sheet: Far superior to all types of paper backers. Applied to the underside of the tabletops for moisture control and easy cleanup (including gum removal), stain resistance and fantastic appearance.

SICO® ARMOR-EDGE®: The most durable edge available. Provides an incredibly tough edge to take hard everyday abuse without damage. Hermetically seals the tabletop for sanitary purposes and prevents moisture from entering table top core. Now available in 12 standard colors.

Multiple Sizes: Choose from multiple lengths and seating capacities.

Tamper Proof Expansion Rivets: Fastens tabletop firmly to the frame.

Center Gravity Lock Bar: ½" (1.3cm) center gravity lock bar prevents anyone from raising center of table by sitting on the table end. Easily released from either side.

Two 7 Gauge Vertical Hinges with Low Friction Bushing: Extra heavy self cleaning hinges won't trap food while providing additional strength, security and durability.



Exclusive SICO® Strut™ Lift Assist

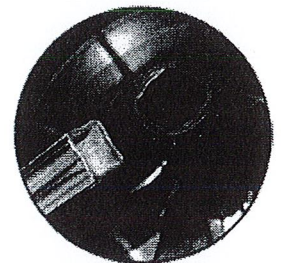
No Loss of Power: Never lose lifting power for the lifetime of the product. Guaranteed.

No Maintenance: No exposed operating components. No parts to replace. No lubricating required. Constructed using a patented design.

Table Legs

HSLA 16 Gauge Tube: High strength low alloy steel tube delivers a yield strength of 70,000 psi, double the yield strength of competitors tables while being lighter in weight. Flexibility is designed into the legs to allow for contained motion and the way students use the tables today.

Patented Square Shape Stool Support Post: Prevents any rotational movement of the stool seat. Lower portion of support post retains round shape, preserving the elegant look of the table.



Leg Retainer: Heavy duty, low-friction polymer leg retainer holds legs securely into the frame. Eliminates any metal-on-metal wear and no need for maintenance at this pivot point.

Protective Neoprene Glides: Non-marring contact with floor keeps table in place and prevents floor damage. Reinforced glides contain metal washers to prevent leg tubes from breaking through bottom.

Aircraft Lock-nuts: Tamper-resistant lock-nuts are used at all mounting points and won't loosen over time.

* Patent Pending



Features, Advantages & Benefits

Seating Choices

Open walkway between stools means easy access with no "stumble bars" to create a hazard.

ABS Plastic Comfort Stools*:

20% more surface area than most round stools creates a comfortable seat for longer periods of time. Drains liquids more efficiently.



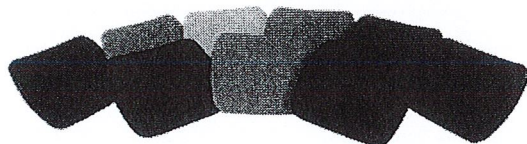
Optional Accent Guard*: Cover the bottom of the comfort stool for easy clean-up and a flawless look.

One-piece ABS Plastic

Round Stools: Proven to be comfortable and durable through years of everyday use.



Extended Color Palette: Match 9 color choices to Armor-Edge®, and caster thread guard, or mix and match colors for school spirit or for a fun look.



Limited Lifetime Warranty

Protected by a **Lifetime Warranty on welds and SICO® Strut™**. Limited Lifetime Warranty on table system. Visit www.sicoinc.com for warranty details

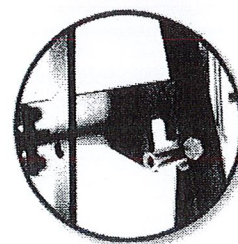
Serial Number: Tables are permanently marked for easy identification.

Caster Transport

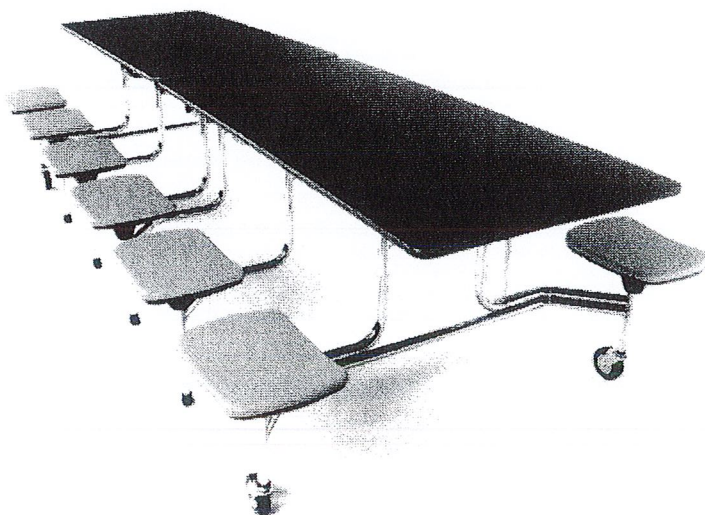
Caster: Each TC-65 has four 4" (10cm) non-marking casters with a wide surface area for smoother rolling. Stems on each caster are solid steel. Plastic thread guards prevent the accumulation of debris keeping wheel rotating freely. The thread guard is available in a variety of colors.



Transport Lock: The handle unlocks the latch from either side of the table, allowing the SICO® Strut™ to assist in lowering the table slowly into the use position.



Mobility and Storage: The robust caster and SICO® Strut™ make table lifting easy. Simply lift in the center and roll into use or storage. No caddies needed.



* Patent Pending



Director (Approximately 8 Ft.)

Model #: TTF61

HSLA
STEEL



Length..... 8 Feet (244cm)

Width..... 30 Inches (76cm)

Height..... 27" or 30"

Weight..... 143-147 lbs* (65-67kg)

Seating Capacity..... 8

Stool Option..... Round or Comfort

Color Options..... ALL

ADA Compliant..... YES

(Place wheelchairs on the ends of table)

Cadet (Approximately 10 Ft.)

Model #: TTD51



* SICO® STRUT™ NOT AVAILABLE
* COMFORT STOOL NOT AVAILABLE

Length..... 10 Feet (305cm)

Width..... 30 Inches (76cm)

Height..... 24"

Weight..... 237 lbs (108kg)

Seating Capacity..... 12

Stool Option..... Round

Color Options..... ALL

ADA Compliant..... NO

* Weight dependent on type of stool selected



7525 Cahill Road, Minneapolis MN 55439 | 1.800.328.6138 | www.sicoinc.com | ©SICO Incorporated

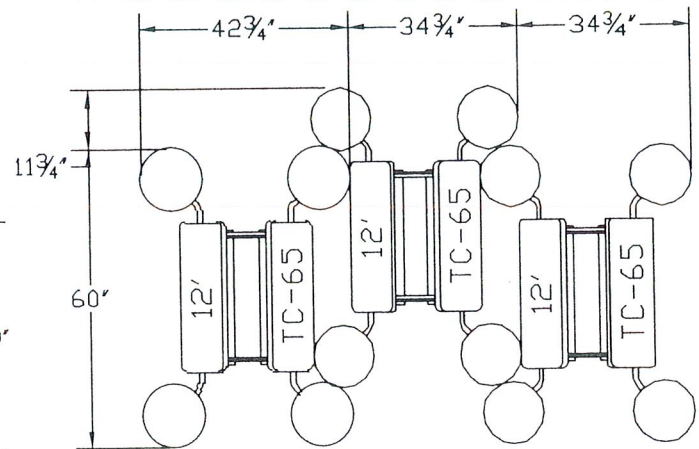
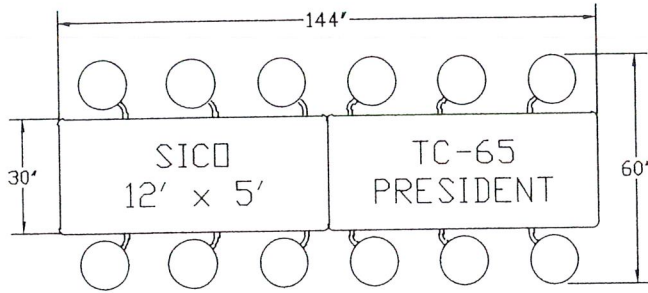
Table Dimensions & Storage Configurations

TC-65 President

Top Height: 30" or 27"

Folded Height: 83.5" h or 80.5" h

Table Top Size: 30" x 144"

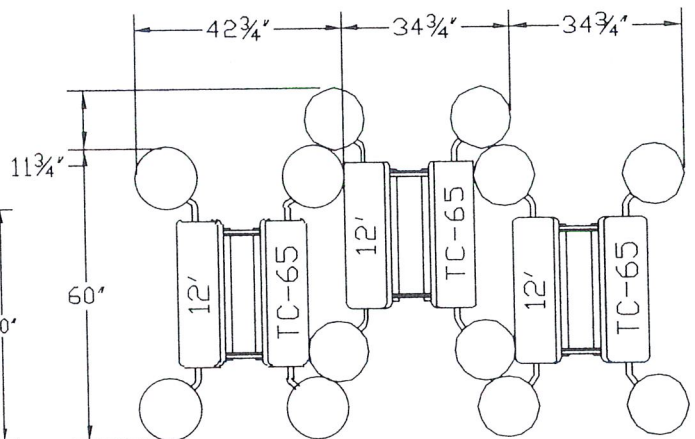
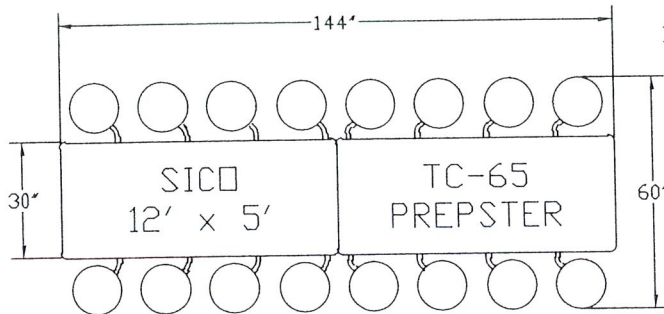


TC-65 Prepster

Top Height: 28" or 26"

Folded Height: 81.5" h or 79.5" h

Table Top Size: 30" x 144"



TC-65 Senior

Top Height: 30" or 27"

Folded Height: 74" h or 71" h

Table Top Size: 30" x 120"

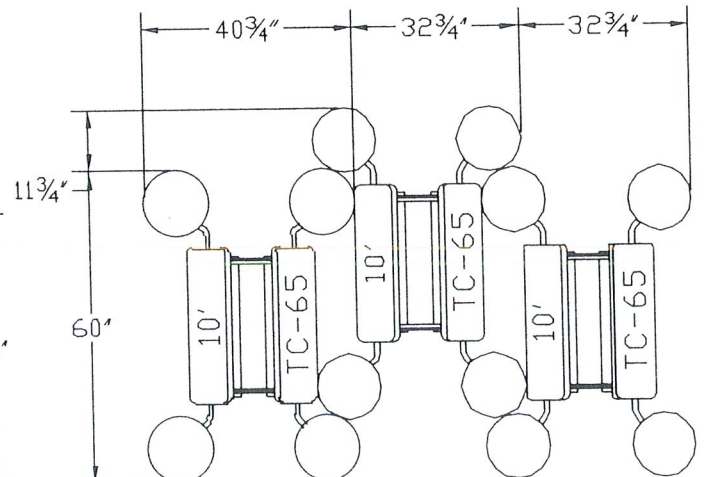
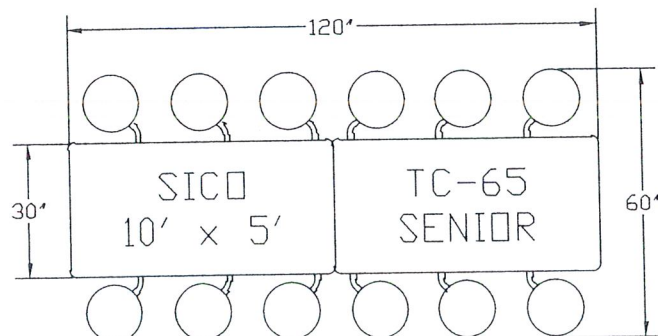


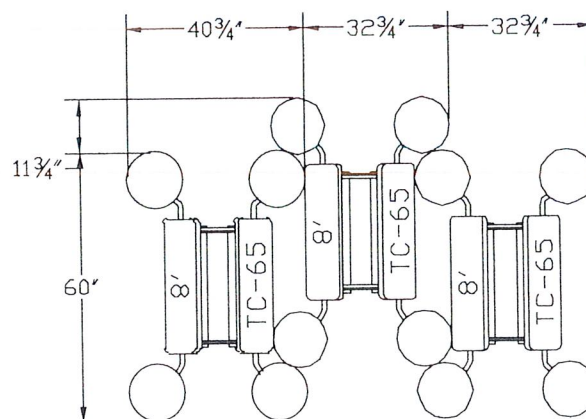
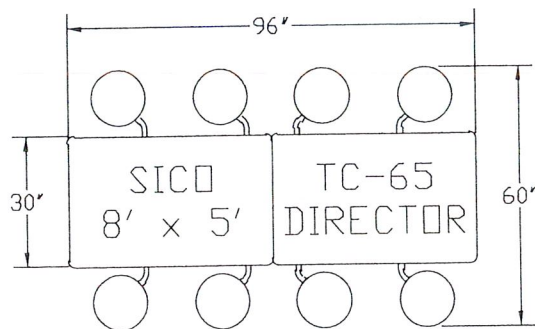
Table Dimensions & Storage Configurations

TC-65 Director

Top Height: 30" or 27"

Folded Height: 60" h or 57" h

Table Top Size: 30" x 96"



TC-65 Cadet

Top Height: 24"

Folded Height: 68.25" h

Table Top Size: 30" x 120"

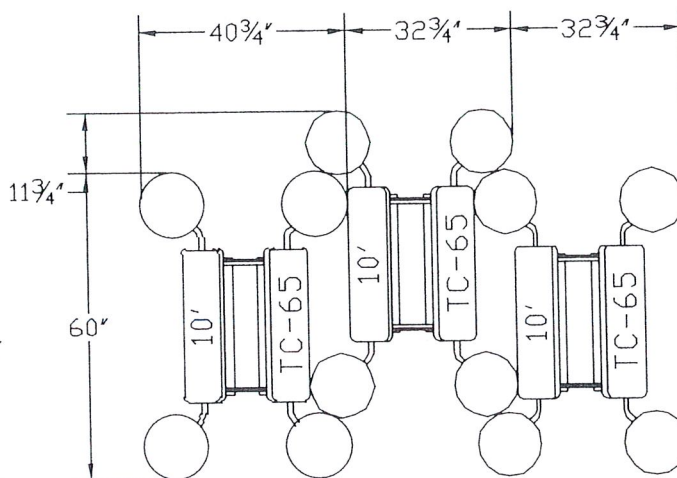
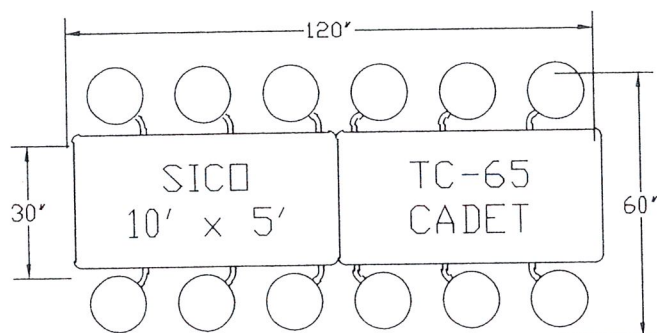
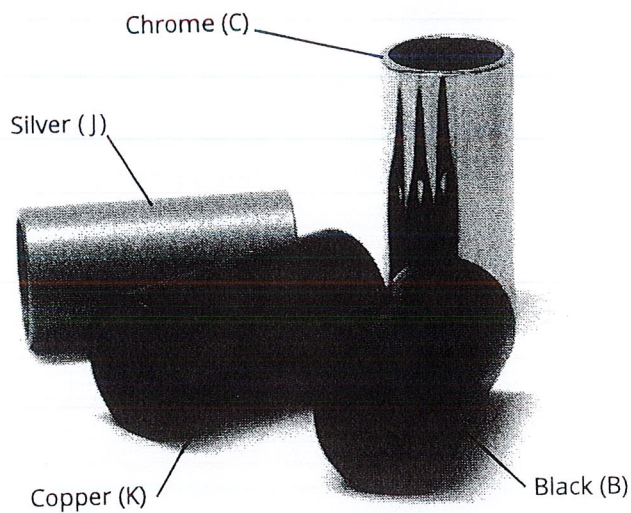
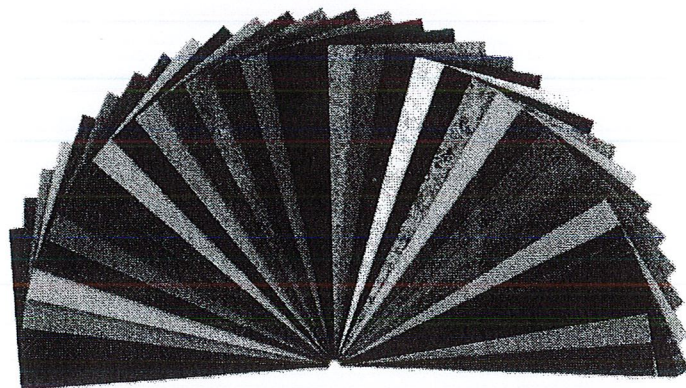


Table Leg/Frame Options

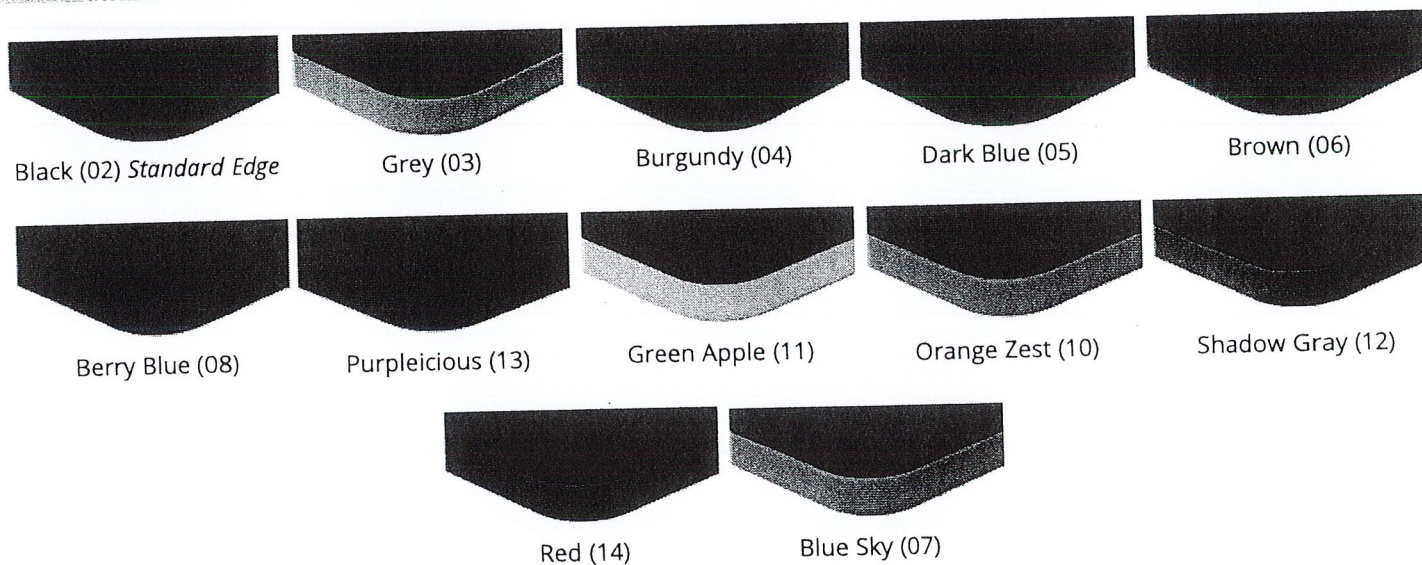


Laminate Options

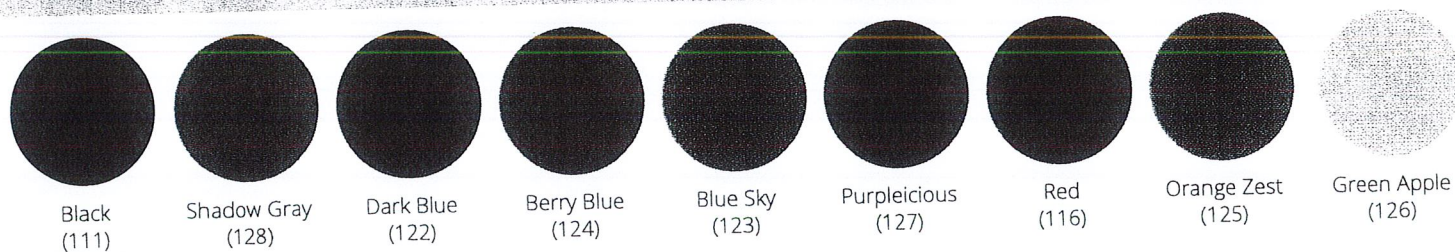


Visit www.sicoinc.com to see our collection of almost 200 standard table laminates.

Table-Top Armor-Edge® Options



Color Options (Round Stool, Comfort Stool, Accent Guard, Caster)





School Outlet

PO Box 4470
Stateline, NV
United States 89449

Quote

Valid Till: Dec 14, 2021
Quote Number : IQPT0-0
Session #: L7400225

Phone: (877) 398-6449

Fax: (877) 225-2797

Email: customerservice@SchoolOutlet.com

Bill To:

Janie Lugo

77581

Ship To:

Janie Lugo

77581

Prices are changing rapidly as manufacturers raise their prices at the end of the year and to account for inflation and supply chain challenges. Your quote is good for 15 days and will need to be re-quoted after that. We apologize for the inconvenience.

Quote Details

Item	Qty	Price	Total
SKU: AMT-MST1012 AmTab Mobile Stool Table - Rectangle - 30"W x 10'1"L - 12 Stools (AmTab AMT-MST1012)	8	\$1,586.30 \$1,545.00	\$12,360.00



Options:

Top Laminate Color:Gray Nebula

Edge Color:Black

Frame Color:Black

Top Stool Color:Blue

Bottom Stool Color:Black

Upgrade to a Plywood core:No

Select a Height:29" - 17" Height

Caster Color:Black

Fifteen year limited warranty. # of people that can fit around table: 12

Tools & Assembly Required

Estimated Delivery: 10 Weeks

Subtotal:	\$12,360.00
Tax:	\$0.00
Shipping Cost:	\$3,876.25
Grand Total:	\$16,236.25



Made in USA These products are "all or virtually all" manufactured in America according to the Federal Trade Commission (FTC). This encompasses all fifty states, US territories, and the District of Columbia. Products bearing this label have little to no overseas content. The FTC is very strict, and enforces, what can legally be called "Made in the USA".



GREENGUARD Gold Certification: Is a stringent indoor clean air testing regimen developed and managed by UL (United Laboratories). Ensures products are acceptable for use in environments such as schools and healthcare facilities in regards to low chemical emissions. These products are compliant with stringent emission levels for over 360 VOCs, plus a limit on the total of all chemical emissions combined (TVOC). Products are tested for more than 10,000 chemicals in state-of-the art steel chambers. All testing procedures comply with applicable STM and ISO standards. Products undergo annual testing to remain certified. Includes safety factors to account for sensitive individuals, such as children and the elderly. For more information visit www.Greenguard.org.



MAS Certified Green®: MAS Certified Green® is a testing program similar to Greenguard that ensures approved products limit the amount of volatile organic compounds (VOCs) released into indoor environments (such as classrooms or offices). VOC's have short and long term adverse health effects. Formaldehyde is one of the best known VOCs and is found mostly in wood products, furniture finishes and carpeting. Products meeting MAS Certified Green standards will not contribute to adverse indoor air quality, and consumers can feel comfortable knowing that the MAS Certified Green® products they purchase are contributing to a "healthier indoor environment" for their employees, children, and families. For more information visit www.mascertifiedgreen.com/



CPSIA Compliant: The Consumer Product Safety Improvement Act (CPSIA) is a United States Government law restricting levels of hazardous materials in products imported or made within the US, especially those for children.

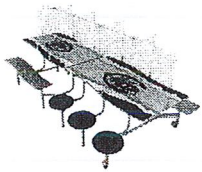


Meets for exceeds BIFMA Standards: BIFMA is a non-profit organization that establishes minimum standards for strength and durability in furniture. Furniture designated as meeting BIFMA requirements are tested in an independent lab to ensure they meet these requirements and can be expected to provide a high level of quality and safety in an educational or work environment. For more information visit www.BIFMA.org

Thank you for considering SchoolOutlet!

Our customers often buy these products with the items on your quote.

Interested? Or have questions? Contact us using the links below.



\$999.85



AMT-TABLE-SHIELD

AmTab TABLE-SHIELD

Estimated Delivery: 10 Weeks



\$47.95



9018

Virco 9018 - Over 60 Million Sold

Virco's 9018 school chair is the most popular school chair in America.

Made in USA. 10 year warranty.

Estimated Delivery: 4 - 6 Weeks



\$1,621.45



AMT-MST1212

Mobile Stool Table - Rectangle - 30"W x 12'1..."

Fifteen year limited warranty. # of people that can fit around table: 12

Tools & Assembly Required

Estimated Delivery: 10 Weeks



\$86.85



785

785 Student Desk - America's #1 School Desk

The most popular desk in American schools. Over 20 million sold.

Laminate top with Plastic book-box. 10 year warranty. Made in USA.

Estimated Delivery: 4 - 6 Weeks



\$157.85



Virco-9700BR-ASAP

Virco 9700BR Chair-Desk -- Quick Ship Colors

Ships faster than the normal 9700BR.

#1 selling Combo Desk in the USA.

Estimated Delivery: 2 - 4 Weeks



\$310.85



NPS-SLT1-2448H

Science Lab Table - High Pressure Laminate T...

500 lbs. weight capacity. Ten year limited warranty.

Tools and assembly required.

Estimated Delivery: 6 - 8 Weeks

We are here to help!

Toll Free

(877) 398-6449

Email

CustomerService@SchoolOutlet.com

Click to Chat



Contact us: Mon-Fri 8am to 8pm EST

Your Shopping Cart

<input type="checkbox"/> Item Details	Quantity	Price per item	Total Price
<input type="checkbox"/>	8	\$1,943.99	\$15,551.92
SKU: LNT-GNI1030-QS			
Options:			
<input checked="" type="checkbox"/> Stool Color - Blue			
Edit Delete			

Members to regional and local school district contracts plus to the national co-op TIPS can now receive discounts online.

[Login to see your available contract discounts ►](#)

PROMO CODE [Apply](#)

Total \$15,551.92

[Check Out ►](#)

or



or

[amazon pay ►►](#)

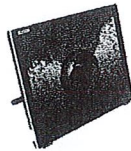
USE YOUR AMAZON ACCOUNT

[Email My Cart](#)

Customers Also Purchased



Iron borative
\$332.99 - \$332.99
☆☆☆



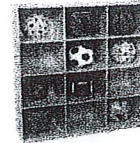
QOMO
Interactive LCD
Writing Panel
\$1,255.99
☆☆☆☆☆



Learniture
Shapes Series
Mobile Chair
\$405.88
☆☆☆☆☆



Norwood
Commercial
Furniture
Open Two Shelf
Credenza w/
\$604.76
☆☆☆☆☆



Wood Designs
Big Cubby Storage
\$538.99 - \$591.99
☆☆☆☆☆

Testimonials

"Fast delivery service and always get exactly what I was expecting. Great quality merchandise!"

— Jill R., Lincoln Intermediate

"The order was simple, the shipping was fast and the product was excellent!"

— Colleen E., The Kristine Project

"Ease and accuracy of the entire process from start to finish."

— Charles C., GoHypersonic Inc.

[Back to top](#)

Sales

1-800-260-2776

M-F: 8-7 Eastern

Fax: 1-800-494-1036

Email Sales

Live Chat

Search My Quotes

Customer Care

1-866-619-1776

M-F: 8-7 Eastern

Contact Customer Service

My Account

Order History

Track Order

Returns Policy

Resources

Brochures & Catalogs

Buying Guides

Co-ops & Contracts

Email this Page

Frequently Asked Questions

Site Map

Blog

Company Info

School Outfitters

3736 Regent Ave.

Cincinnati, OH.

45212-3724

About Us

Careers

Privacy Policy

Sign up to receive offers & updates:

Email Address

Go

Accepted Payment Types:

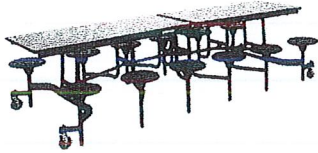


Join the Conversation:



Shop with Confidence:



**Quick
Ship**

Learniture®

Mobile Stool Cafeteria Table w/ Particleboard Core and Powder Coat Frame - 12 Stools (30" W x 12' L) - Quick Ship

★★★★★

[Write a review](#)[Post a question](#)[Start a Live Chat](#)**\$1,943.99**MSRP: ~~\$3,887.76~~

You Save: \$1,943.77 (50%)

SKU: LNT-GNI1030-QS

[Calculate Shipping](#)

On Sale

Select Options:

Choose a stool color:



Quantity: 1

[Add to Cart](#)

Share:

Specifications Description Resources

Product Weight (Lbs):	265
Assembly:	Minor assembly required
Casters/Glides:	4 thermo-polyurethane casters (2 locking), w/ tamper-proof non-marring nylon steel insert glides
Edge Band Material:	Vinyl T-mold
Frame Finish:	Powder coat
Frame Material:	14 gauge steel
Overall Height:	29" H
Overall Length:	12' L
Overall Width:	30" W
Seat Height:	17" H
Seat Size:	13" diameter
Seating Capacity:	12
Stool/Bench Material:	Polystyrene plastic
Storage Dimensions:	59" W x 35" D x 79 3/4" H

Similar Items

You May Also Like

Recently Viewed



Learniture
Round Mobile Stool Cafeteria Table w/
Particleboard Core - Quick Ship
\$1,655.99



Learniture
Round Mobile Bench Cafeteria Table w/
Particleboard Core - Quick Ship
\$1,873.99



Learniture
Mobile Bench Cafeteria Table w/ Particleboard
Core - Quick Ship
\$1,798.99 - \$1,932.99



Learniture
Elliptical Mobile Bench Cafeteria Table (72' W x
10' 1' L)
\$1,993.99 - \$2,455.99

★★★★★

Search topics and reviews

0
[Reviews](#)4
[Questions](#)4
[Answers](#)[Post a question](#)**Questions**

1-4 of 4 Questions

Sort by: Most helpful answers ▼

Lsimon5 · 3 months ago

Do these tables come fully assembled?1
answer

Originally posted on Mobile Stool Cafeteria Table w/ Particleboard Core and Powder Coat Frame - 12 Stools (30" W x 10' L) - Quick Ship

School Outfitters · 3 months ago

Minor assembly for this table is required. You may download the assembly instructions under the "Resources" tab on the product page.

Helpful? **Yes · 0** **No · 0** [Report](#)

Jim · 7 months ago

1
answer

what about height options

Originally posted on Mobile Stool Cafeteria Table w/ Particleboard Core and Chrome Frame - 12 Stools (30" W x 10' L) - Quick Ship

School Outfitters · 7 months ago

This cafeteria table has a seat height of 17-inches and an overall height of 29-inches. If you have a specific height need please call us at 1-800-260-2776 and a team member will be happy to assist you.

Helpful? **Yes · 0** **No · 0** [Report](#)

Sid · 2 years ago

1
answer

About how many people would it take to exceed the strength of the table and break it in half?

Originally posted on Mobile Stool Cafeteria Table w/ Particleboard Core and Powder Coat Frame - 12 Stools (30" W x 10' L) - Quick Ship

School Outfitters · 2 years ago

The weight limit per stool is 250 pounds. If students were to sit on the table, the weight limit is 300 pounds.

Helpful? **Yes · 1** **No · 0** [Report](#)

Carl · 3 years ago

1
answer

Do these cafeteria tables meet or exceed ANSI-BIFMA standards?

Originally posted on Mobile Stool Cafeteria Table w/ Particleboard Core and Chrome Frame - 8 Stools (30" W x 8' L) - Quick Ship

School Outfitters · 3 years ago

Mobile cafeteria tables with attached seating are covered by UL 2040 Folding Rollaway Tables; they are not BIFMA-certified.

Helpful? **Yes · 0** **No · 0** [Report](#)

Reviews

★★★★★

[Be the first to review this product](#)

[Back to top](#)

Sales

1-800-260-2776

M-F: 8-7 Eastern

Fax: 1-800-494-1036

Email Sales

Live Chat

Search My Quotes

Customer Care

1-866-619-1776

M-F: 8-7 Eastern

Contact Customer Service

My Account

Order History

Track Order

Resources

Brochures & Catalogs

Buying Guides

Co-ops & Contracts

Email this Page

Frequently Asked Questions

Site Map

Blog

Company Info

School Outfitters

3736 Regent Ave.

Cincinnati, OH.

45212-3724

About Us

Careers

Privacy Policy

Sign up to receive offers & updates:

Email Address

Accepted Payment Types:



Join the Conversation:



Shop with Confidence:



Horizon Montessori Public Schools

Purchase Order Compliance Form

Departments **must** consider the following elements when planning to use Federal funds. Please check all that apply and provide additional explanation or documentation as necessary.

REASONABLE: a cost is reasonable if sound business practices were followed and price is comparable to current market price.

Check one box

- ☐ All procurement procedures were followed for purchases of \$50,000 and more (see Federal Grant Policies and Procedures Manual)
- ☒ Prices were obtained from adequate number of quotes (required if unit cost between \$3,500.01-\$49,999.99 for goods/services (see quotes section below)
- ☐ Purchase is less than \$3,500.00

How is it reasonable? _____

ALLOWABLE: a cost must be allowable under the Federal cost principles in 2 CFR Part 200 (EDGAR), Subpart E and under the terms and conditions of the Federal grant award AND must be reasonable, necessary and allocable. Cost is allowable in accordance with the Federal grant award (budgeted in the approved grant application/contract).

- ☒ Cost is not being used to meet cost sharing or matching requirements of another Federal grant
- ☒ Cost is consistent with policies and procedures that apply uniformly to all funds (not treated differently)
- ☒ Costs are adequately documented

How is it allowable? COST IS allowable because cafeteria
tables are needed at Pearland campus

NECESSARY: a cost is necessary if needed to achieve an important program objective (not considered "nice to have").

- ☒ The cost is needed for the proper and efficient performance of the Federal grant or contract (items cannot be purchased toward end of grant period since the program did not receive benefit of the purchase)
- ☒ The cost is identified in the approved budget, application or contract (required if requires specific approval)
- ☒ The cost aligns with the identified needs based on results and findings from a formal needs assessment

How is it necessary? COST IS necessary so students can
sit down for lunch to have a good meal.

ALLOCABLE: a cost is allocable to the Federal award if the goods or services involved are chargeable as assignable to the award in accordance with the relative benefits received.

- ☒ The charge to the program is in proportion to the value received by that program

How is it allocable? Cost is allocable because tables
will be used year round.

BENEFIT: a cost is necessary if order needed in the grants' final 90 days to achieve an important program objective.

- ☒ The cost is needed for the proper and efficient performance of the Federal grant or contract
☒ The cost is identified in the approved budget, application or contract (required if requires specific approval)
☒ The cost aligns with the identified needs based on results and findings from a formal needs assessment
☐ Does not apply

SPECIAL OR UNUSUAL COSTS: certain costs that may be difficult to determine reasonableness or allocability, require prior written approval for "special or unusual costs" not identified in the regulations in advance of the incurrence of such costs.

- ☐ Submit request in writing to the TEA Chief Grants Administrator or Federal Program Officer
☐ Request must include timeframe or scope of the agreement
☒ Does not apply

CONSIDERATION FOR ITEMS OF SPECIFIC APPROVAL: the department received prior approval from TEA or other awarding agency through the application and grant/contract awarding process for the following items. If the awarding agency requires pre-approval for the following, attach application or other document.

- ☐ Participant Support Costs – stipends, travel, registration fees paid to or on behalf of participant or trainees (not employees)
☐ Capital Outlay (66XX)
☒ Does not apply

PURCHASE VERSUS LEASE: the department avoids the acquisition of unnecessary or duplicative items, and considers consolidating or breaking out procurements to obtain a more economical purchase. Where appropriate, the Center makes an analysis of leases versus purchase alternatives, and other appropriate analyses to determine the most economical approach.

- ☐ Prudence was used in making the decision to incur the cost
☐ Necessary to carry out the objectives of the grant program or is recognized as an ordinary cost to operate the organization
☒ Applied sound business practices; arm's-length bargaining; Federal, State, and other laws and regulations; and the terms and conditions of the award
☐ Price is comparable to that of the current fair market value for equivalent goods or services
☐ No significant deviations from the established practices of the organization which may unjustifiably increase the cost
☒ Does not apply

RECOVERED MATERIALS: consider the use of Federal excess and surplus property in lieu of purchasing new equipment and property whenever such use is feasible and reduces project costs. The requirements apply to State and local governments, including the ESC, and include the purchase of everyday items such as paper products, non-paper office products, office furniture, floor mats, and awards and plaques, as well as many other items, where the purchase price of the item exceeds \$10,000 or the value of the quantity acquired by the preceding fiscal year exceeded \$10,000. Requirements also include:

- ☐ Research or inquire other Federal program areas within the ESC to determine if existing material/equipment is available for use.
☐ Compliance with Solid Waste Disposal Act procuring only items designated in the EPA guidelines.
☐ Reasonably available within certain time frame.
☐ Meet performance standards.
☐ Unreasonable price.
☒ Does not apply

QUOTES FOR PURCHASES: for Goods/Services contracts from \$3,500.01-\$49,999.99, departments must obtain adequate number of quotes (written or verbal from potential vendor) unless utilizing a purchasing cooperative, existing bid/RFP or sole source vendor. If lowest quote isn't used, please explain below:

☐ Not Applicable

List vendors and quotes here or attach a PO or PA requisition

The Edu-Source Corp	\$ 15,775.87
School Outlet	\$ 16,236.25
School Outfitters	\$ 15,551.92

Other explanations: School Outfitters would not deliver until 5 months from date of order placed.

SOLE SOURCE: Must meet State and Federal requirements for noncompetitive proposals. See Sole Source Vendor Affidavit and attach, if applicable.

☐ Does not apply

Federal Requirements (check one or more):

- ☐ The item is available only from a single source and an equivalent cannot be substituted; this must be documented
 - ☐ The public exigency or emergency for the requirement will not permit a delay resulting from competitive solicitation
 - ☐ TEA (or other Federal awarding agency) expressly authorizes noncompetitive proposals in response to a written request from the ESC
 - ☐ After solicitation of a number of sources, competition is determined inadequate
- State Requirements** (check one):
- ☐ Identification and confirmation that competition in providing the item or product to be purchased is precluded by the existence of a patent, copyright, secret process or monopoly
 - ☐ A film, manuscript, or book
 - ☐ A utility service, including electricity, gas, or water
 - ☐ A captive replacement part or component for equipment

FORMS CHECKLIST:

W-9 FORM: Completed, signed and attached electronically to the vendor's information in the TxEIS system.

- ☐ Yes
- ☐ No – forward electronic copy to purchasing
- ☐ HMPS Staff – not required

By signing below, individual attests that purchases are allowable, reasonable, necessary and allocable per criteria designated above. Failure to submit the completed compliance form prior to placing an order could cause the grantee to be identified as high risk and could result in additional sanctions.

Jackie Flores
Signature of Professional Staff Member

2/17/22
Date

Jackie Flores
Print Name

Child Nutrition Dept. Manager
Title

PRICE/COST ANALYSIS: *must perform a cost or price analysis in connection with every procurement action in excess of \$150,000. The method and degree of analysis is dependent on the facts surrounding the particular procurement situation. The program must make independent estimates before receiving bids or proposals. See Cost/Price Analysis Form and attach, if applicable.*

☒ Not Applicable

Price Analysis:

- ☐ Adequate price competition
- ☐ Prices set by law or regulation
- ☐ Established catalog prices and market prices
- ☐ Comparisons to previous purchases
- ☐ Comparison to a valid Grantee independent estimate
- ☐ Value analysis

Cost Analysis:

- ☐ Obtaining cost or pricing data (cost breakdown) from prospective contractors or subcontractors
- ☐ Verifying and evaluating the accuracy and allowability of cost data
- ☐ Projecting cost data from known to estimated costs to show the effect on overall prices

DEBARMENT AND SUSPENSION: *The ESC will not subcontract with or award subgrants to any person or company who is debarred or suspended from receiving Federal funds. It is required to check for excluded parties at the System for Award Management (SAM) website, <http://www.sam.gov/>, before any procurement transaction paid with Federal funds. If there is a potential match please visit the following section of OFAC's website for guidance: <http://www.treasury.gov/resource-center/faqs/Sanctions/Pages/directions.aspx>. For all other prohibitions and restrictions, see the agency note in the Additional Comments field to ascertain the extent or limit on the sanction, restriction or partial denial. If there is no note, contact the agency taking the action for this information.*

- ☐ The following "due diligence" steps were taken to determine a valid OFAC match
 1. If a match is found, there may be instances where an Individual or Firm has the same or similar name as your search request but is actually a different party. Therefore, it is important that you verify a potential match with the debarring agency identified in the record information.
 2. Acknowledge having read the following information before performing a search by Data Universal Numbering System (Dun & Bradstreet) (DUNS) or Commercial and Government Entity (CAGE) Code. SAM does not have DUNS or CAGE Code identifiers for all Firms listed in SAM. Therefore, a search by one of these fields may not be sufficient to find a match. An additional Name search should be performed if a match is not found when searching by one of these fields
 3. Searching only on a particular classification code (e.g. Firm), you are potentially excluding results classified with a different code.
- ☐ The vendor/contractor is not suspended or debarred – attach screen shot as confirmation
- ☐ A vendor/contractor match was not found – attach screen shot as confirmation
- ☐ The vendor/contractor is suspended or debarred – ineligible to receive Federal monies
- ☐ Not Applicable – HMPS Staff

Who are you looking for?

Search by Entity

EDU-SOURCE CORPORATION



EDU-SOURCE CORPORATION

UEI: HTPMJTM4FUQ9 | CAGE: 3BUX9 | DUNS: 007020881

Type a name or email



SanJuanita Lugo <sanjuanita.lugo@hmps.net>

Fw: Inquiry # 2839826 Received - Update for Edu-Source Corporation

2 messages

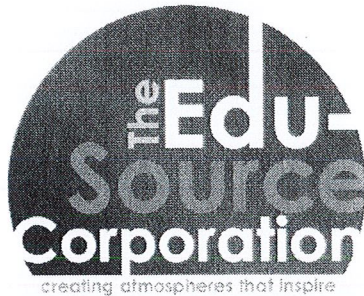
Leah Rios <leah@edusourcecorp.com>
To: SanJuanita Lugo <sanjuanita.lugo@hmps.net>
Cc: Alex Rios <alex@edusourcecorp.com>

Thu, Feb 17, 2022 at 12:09 PM

Ms. Lugo,

Here is the email from Dun & Bradstreet showing that we started the process to update our address online. Once this is updated, we can complete the renewal on SAM.gov.

Thank you,



Leah Rios | Support SVCS/Financial Manager

Office: 210.699.4268 | Toll-free: 800.258.8559
leah@edusourcecorp.com | Fax: 210.699.4386
315 E. Euclid Ave. Ste 105, San Antonio, Texas 78212
www.edusourcecorp.com

**WE'VE MOVED** | Please update your records to reflect our new address above.

From: iResearchUpdates@dnb.com <iResearchUpdates@dnb.com>
Date: Thursday, February 17, 2022 at 11:57 AM
To: edusource@edusourcecorp.com <edusource@edusourcecorp.com>
Subject: Inquiry # 2839826 Received - Update for Edu-Source Corporation

Thank you for your inquiry that has been submitted on behalf of your company. Your inquiry has been assigned Tracking ID # 2839826.

Case Number(s): 2862564
Submitted Date/Time: February 17, 2022, 05:57 PM (UTC)
Business name: Edu-Source Corporation
Duns: 007020881
Location: San Antonio TX US
Concern categories: Address , URL/Website

****Please note that a separate notification of the results will be sent after the completion of each case.**

An email will be sent to you when your request(s) have processed.

The link below allows you to view your company information for review, verification and potential acceptance at any time using our DUNS Manager.

<https://www.dnb.com/duns-number/view-update-company-credit-file.html>

If you have questions, please contact The Dun & Bradstreet Customer Service Team at service.dnb.com.

Sincerely,
D&B iResearch Team

Please do not respond to this message. This is a system generated email.

SanJuanita Lugo <sanjuanita.lugo@hmps.net>
To: Leah Rios <leah@edusourcecorp.com>
Cc: Alex Rios <alex@edusourcecorp.com>

Thu, Feb 17, 2022 at 12:10 PM

Thank you for the update.

Thank you,
Janie Lugo
CNP Clerk
Horizon Montessori Public Schools
2402 E. Business 83
Weslaco, Texas 78596
956-969-3092 ext. 102
sanjuanita.lugo@hmps.net

[Quoted text hidden]