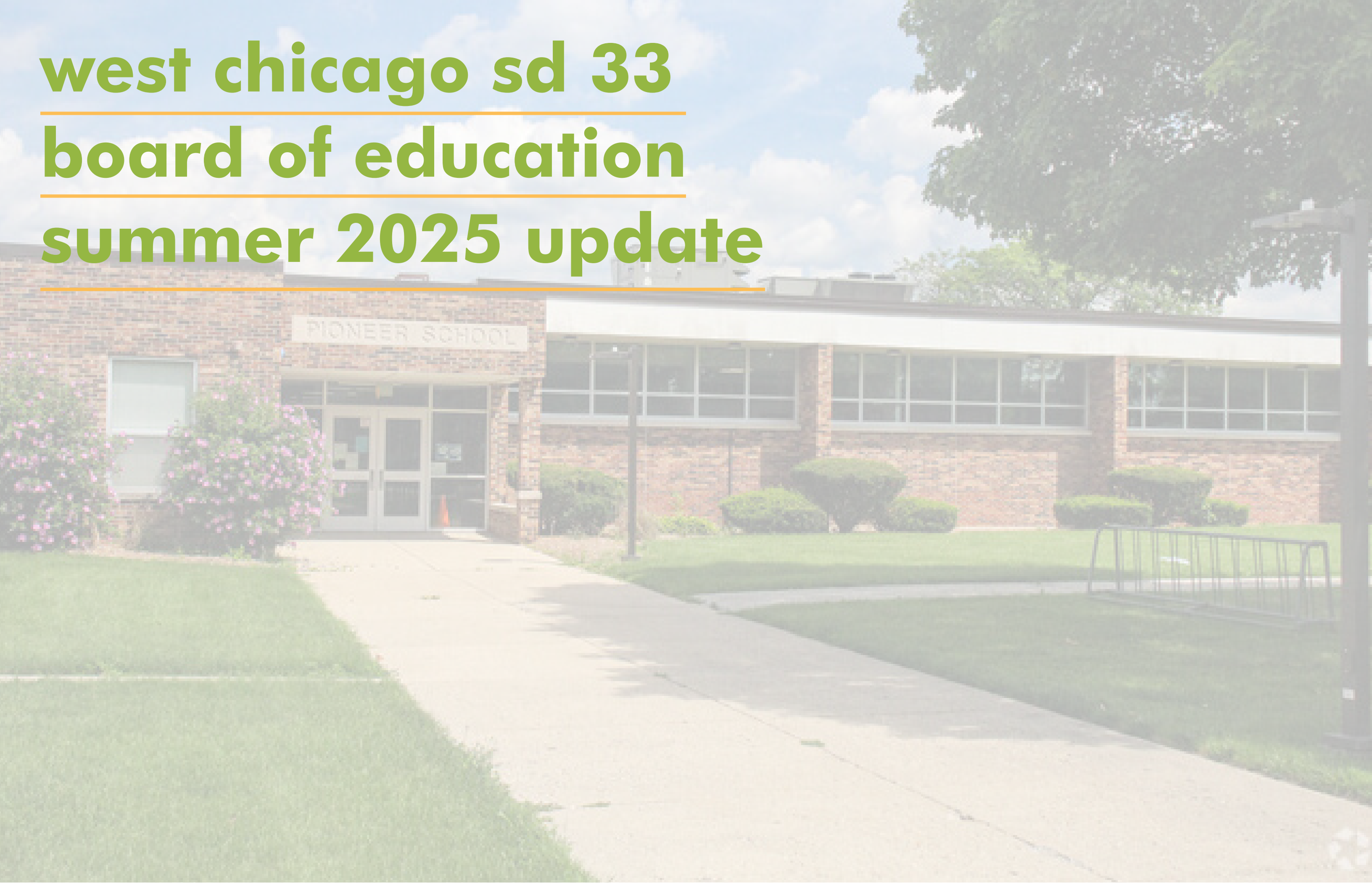


west chicago sd 33

board of education

summer 2025 update



summer 2025 update



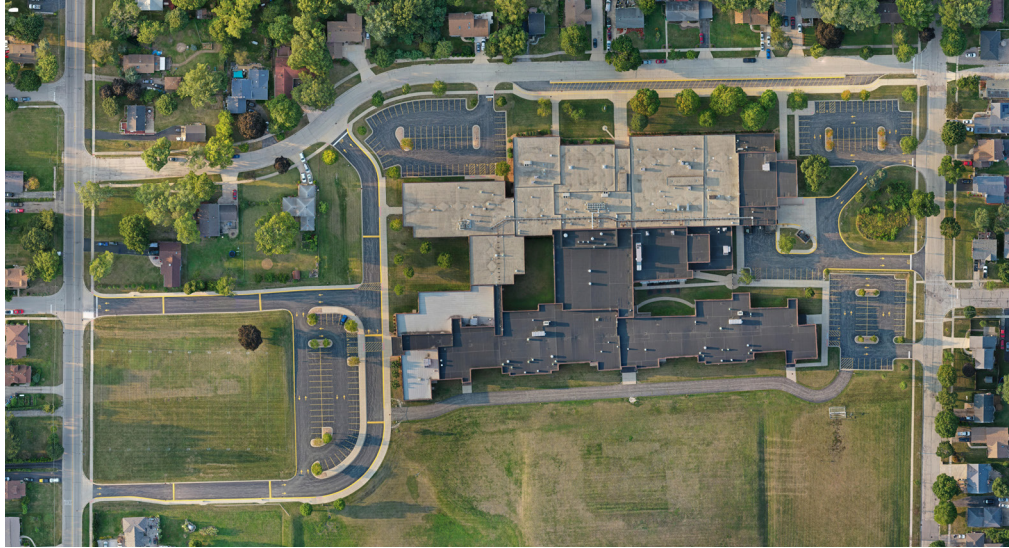
West Chicago Elementary School District 33 | 2025 Site Improvements

Project No. 24020



quick facts

*monument signage and directional signage at all remaining elementary schools



Ieman middle school

- parking lot expansion
- new football field
 - fencing
 - scoreboard
 - storage building
 - long jump
 - irrigation system
- monument signage
- directional signage
- sealcoating
- lighting



pioneer early learning

- parking lot rework
- new drop-off/parking lot
- perimeter cladding
- new canopy
- bollards
- corridor cubbies
- lighting
- monument signage
- directional signage



turner elementary school

- new parking lot and entrances
- rerouting access drives
- site lighting
- monument signage
- directional signage



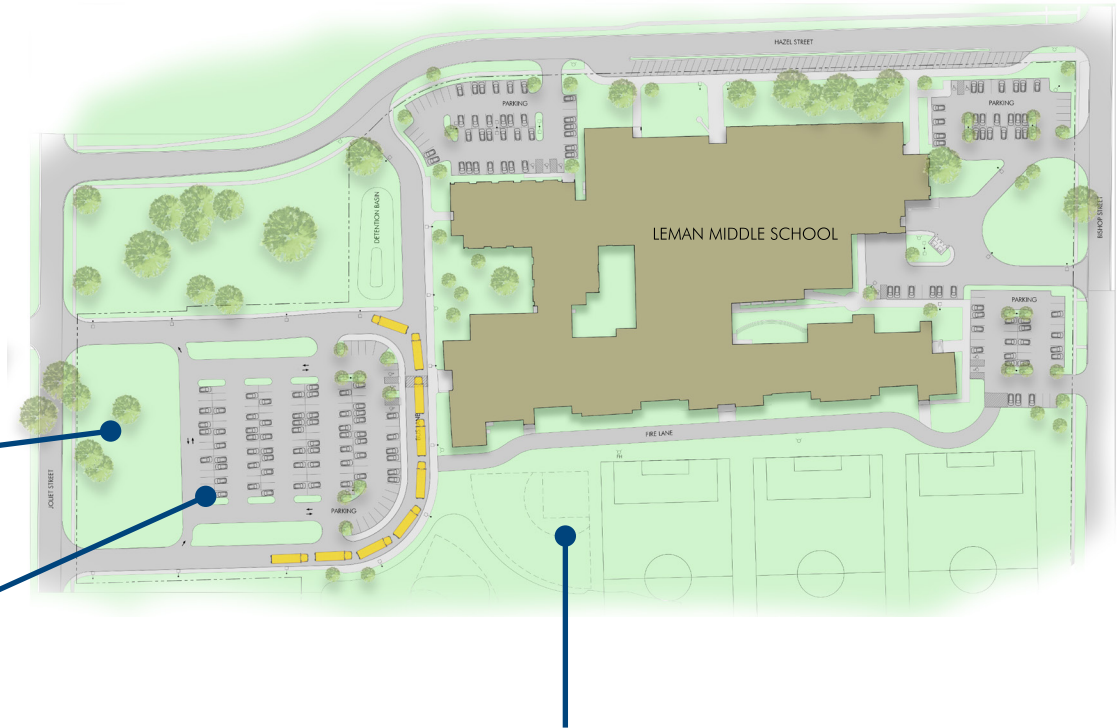
West Chicago Elementary School District 33 | 2025 Site Improvements

Project No. 24020

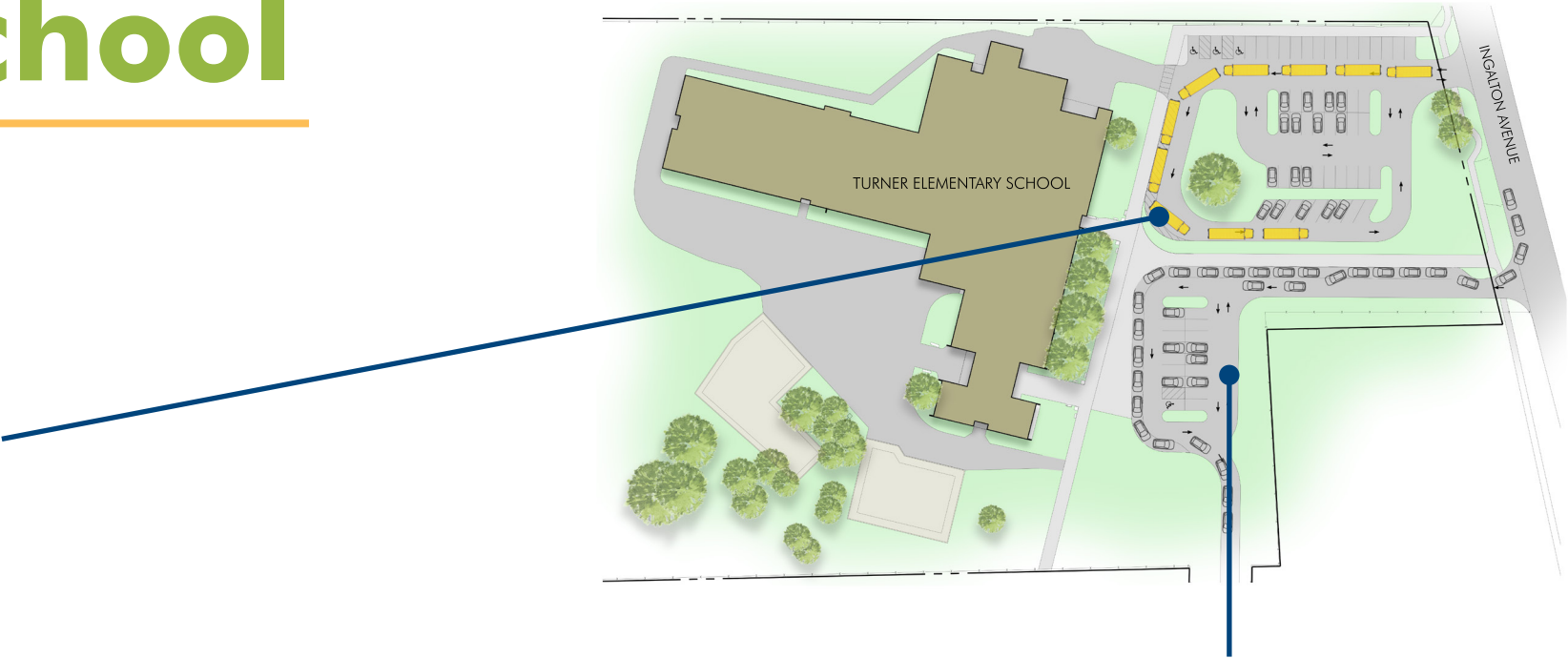
3



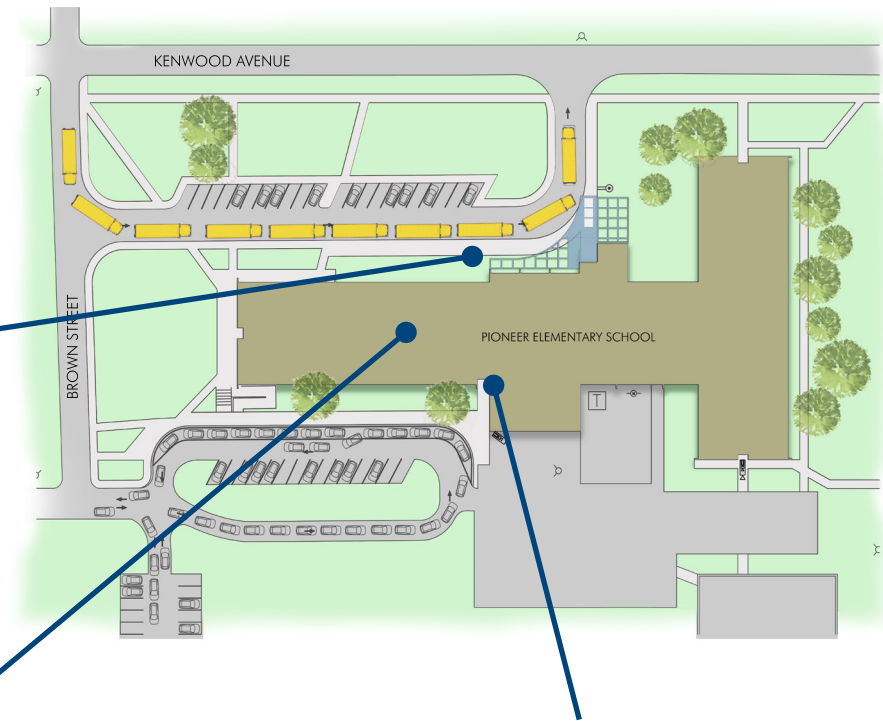
leman middle school



turner elementary school



pioneer early learning



leman middle school



progress



leman middle school



leman middle school



progress



turner elementary school



progress



turner elementary school



progress



turner elementary school



progress



pioneer early learning



progress



pioneer early learning



progress



pioneer early learning



progress



pioneer early learning



progress



pioneer early learning



progress



fall 2025

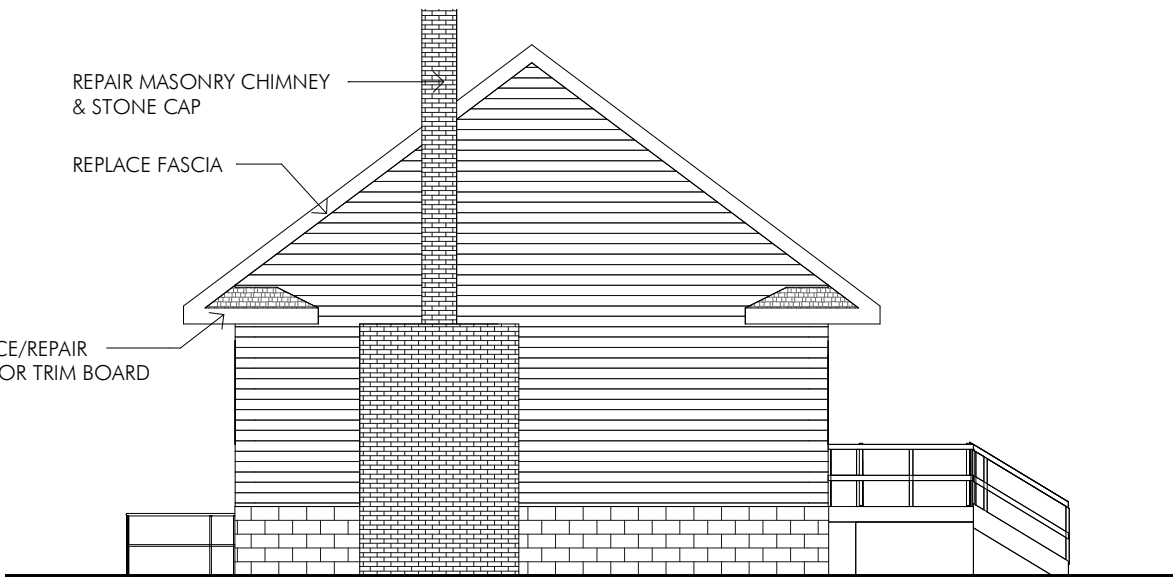


McAuley School EXTERIOR CLADDING REPLACEMENT



NORTH

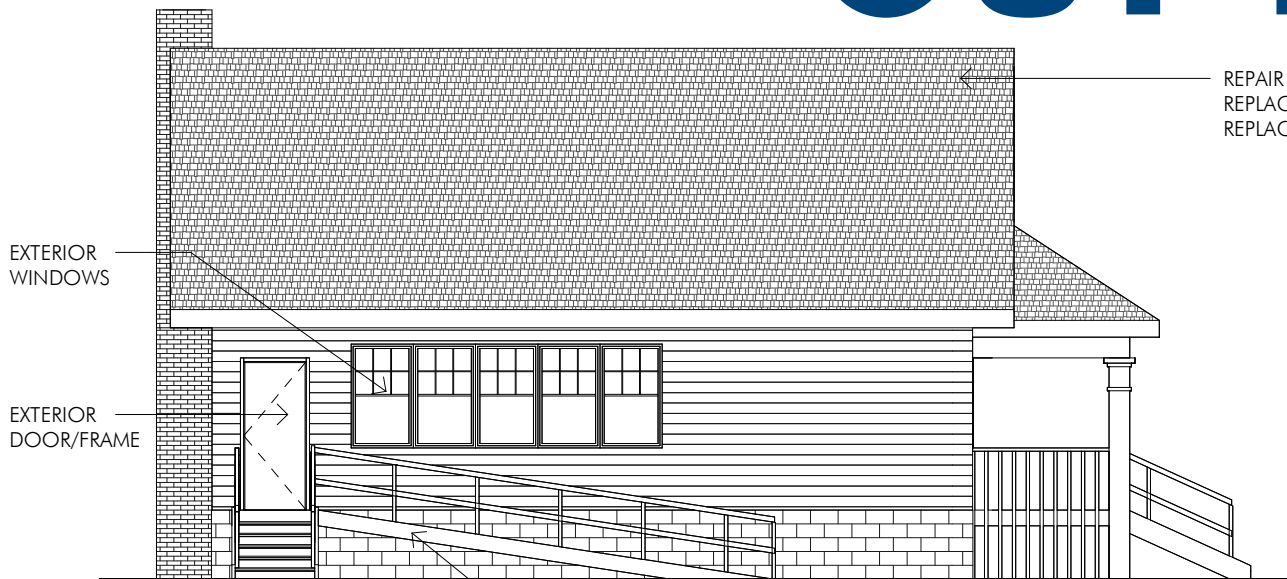
1/8" = 1'-0"



SOUTH

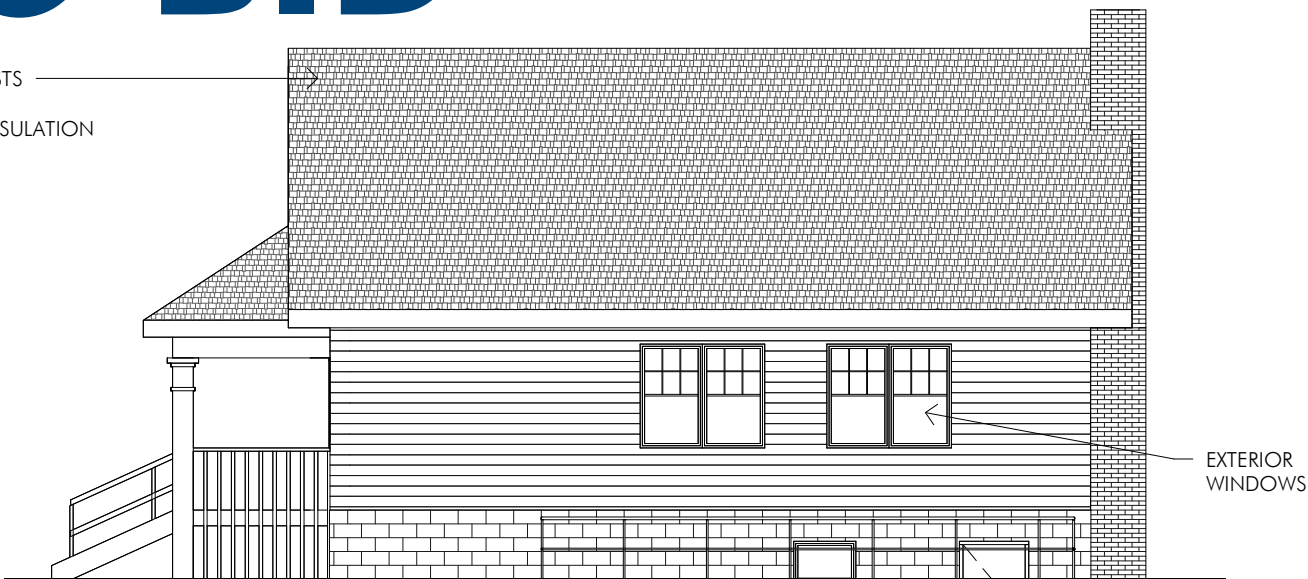
1/8" = 1'-0"

OUT TO BID



EAST

1/8" = 1'-0"



WEST

1/8" = 1'-0"



thank you

