

STEPHENVILLE INDEPENDENT SCHOOL DISTRICT
STEPHENVILLE HIGH SCHOOL EXPANSIONS AND RENOVATIONS
December 17, 2018

DESIGN DEVELOPMENT PRESENTATION



ACKNOWLEDGMENTS	01
NARRATIVE	02
EXISTING FLOOR PLAN	03
SITE PLAN AND FLOOR PLANS	04
PERSPECTIVES	05
SCHEDULE	06



STEPHENVILLE INDEPENDENT SCHOOL DISTRICT
STEPHENVILLE HIGH SCHOOL EXPANSIONS AND RENOVATIONS

Superintendent

Matt Underwood

Stephenville ISD Board of Trustees

Dr. Ann Calahan, Ph.D.	Board President
Scott E. Osman	Board Vice President
Sherrie Evans	Board Secretary
Dr. Robert Barberee	Board Member
Keri Vanden Berge	Board Member
Cole Gilliam Parks	Board Member
Dr. Ed Dittfurth	Board Member

Project Design Team

Daren Kirbo, AIA Principal, Huckabee
Will Smith, AIA Associate Principal, Huckabee
Casey Casstevens, AIA Director of Design Fort Worth, Huckabee
Mike King, AIA Planner, Huckabee
Joshua Cogburn Project Leader, Huckabee
Lauren Hoyle, RID Interior Designer, Huckabee
Stephanie Colwell, AIA Architect, Huckabee

Civil Engineering/Landscape

Pacheco Koch
Fort Worth, TX

MEP Engineering

Romine, Romine & Burgess, Inc.
Fort Worth, TX

Structural Engineering

Huckabee
Fort Worth, TX

Technology/Security

Crux Technology and Security Solutions
Fort Worth, TX

Field/Turf Design

Sports Design Group
McKinney, TX

Acoustics

BAi
Dallas, TX

Food Service

Foodservice Design Professionals
Dallas, TX

Roofing

Armko Industries, Inc.
Fort Worth, TX



STEPHENVILLE INDEPENDENT SCHOOL DISTRICT
STEPHENVILLE HIGH SCHOOL EXPANSIONS AND RENOVATIONS

Stephenville ISD Design Committee Members

Matt Underwood	Superintendent	Jerod Womack	Athletic Director
Stephanie Traweek	Principal	Greg Winder	Head Football Coach
Keith Starnes	Director of Maintenance	Alan Thorpe	Head Girls Basketball Coach, Head Golf Coach, Cross Country
Stephanie Atchley	Director of Special Education	Bill Brooks	Head Boys Basketball Coach
Lacy Gilley	Occupational Therapist	Russell Mayes	Head Softball Coach
Rachel Kammerer	Librarian	Kristi Mayes	Head Cross Country, JV Girls Basketball, Softball Coach
Kimberly Kelsey	Dance Teacher	Debby Winder	Athletic Trainer
Michael Childs	Director of Bands/ Fine Arts Department Chair	Ryan Best	Director of Career & Technical Education
Michel Wimberly	Associate Director of Band and Percussion Specialist	Jordan Smith	Agriculture Science Teacher
Meghan Lockwood	Assistant Band Director	Brenda Burks	CTE Teacher
Arielle Sword	Head Choir Director	Bruce Nation	Construction Technology Teacher
Mindy Pope	Theatre Arts Teacher	Allen Mays	Health Science Technology, Robotics
Emily McLemore	Visual Arts Teacher	Gloria Hodges	Family Consumer Science



STEPHENVILLE INDEPENDENT SCHOOL DISTRICT

STEPHENVILLE HIGH SCHOOL EXPANSIONS AND RENOVATIONS

In May 2018, the voters in Stephenville ISD approved a \$60.8 million bond referendum that includes the expansion and renovation of Stephenville High School. Over the course of several meetings, Huckabee engaged with Stephenville ISD administrators to gain an understanding of the preferred spaces and adjacencies required, in order to develop a floor plan concept.

The programs included in the proposed additions include:

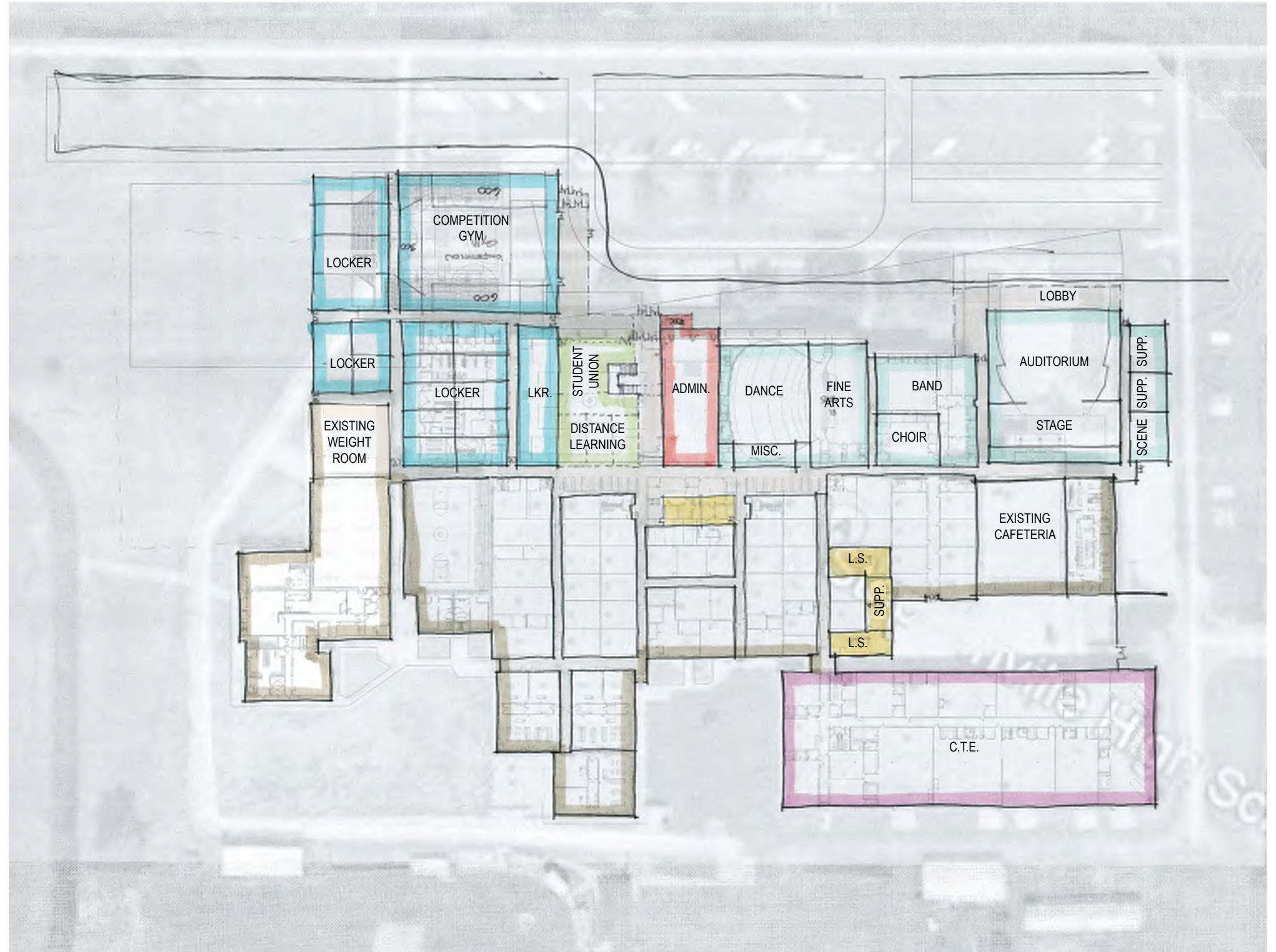
- New competition gymnasium and locker rooms
- New auditorium and support spaces.
- New softball complex
- New Agriculture Science Center

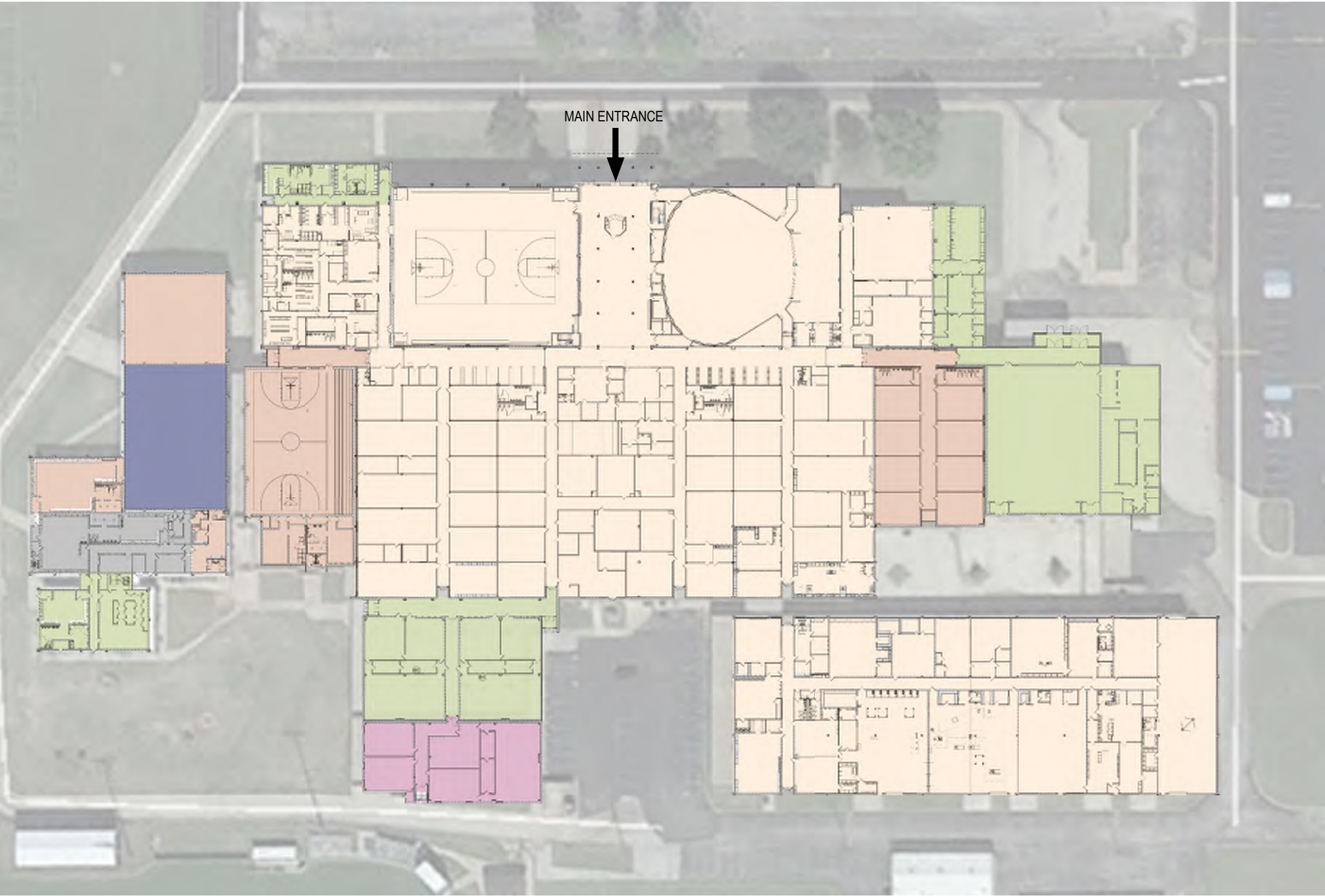
Areas within the building that will be renovated include:

- Vocational Wing
- Existing Auditorium - remodeled for Band, Choir, support spaces
- Existing Band Hall - remodeled for Art, Theater Classroom, and support spaces
- Existing Lobby Space - remodeled for Administration Offices and support spaces
- Existing Administration - remodeled for Counselor Suite
- Existing Gymnasium - remodeled for Student Commons, circulation to Library, and new entry Lobby
- Existing Home Economics - converted into Life Skills
- Training Room and Football Locker Rooms
- Existing Locker Room wing for Basketball, Soccer, Cheer
- New finishes in main Corridors

In addition to these additions and renovated areas, a new controlled vestibule will be constructed, and an enclosed corridor will be built to connect the main high school building to the renovated Vocational wing. The campus will also receive a fire sprinkler system installed throughout, ADA improvements, and security upgrades.

Huckabee values the opportunity to serve Stephenville ISD and appreciates the exemplary collaborative effort from SISD.

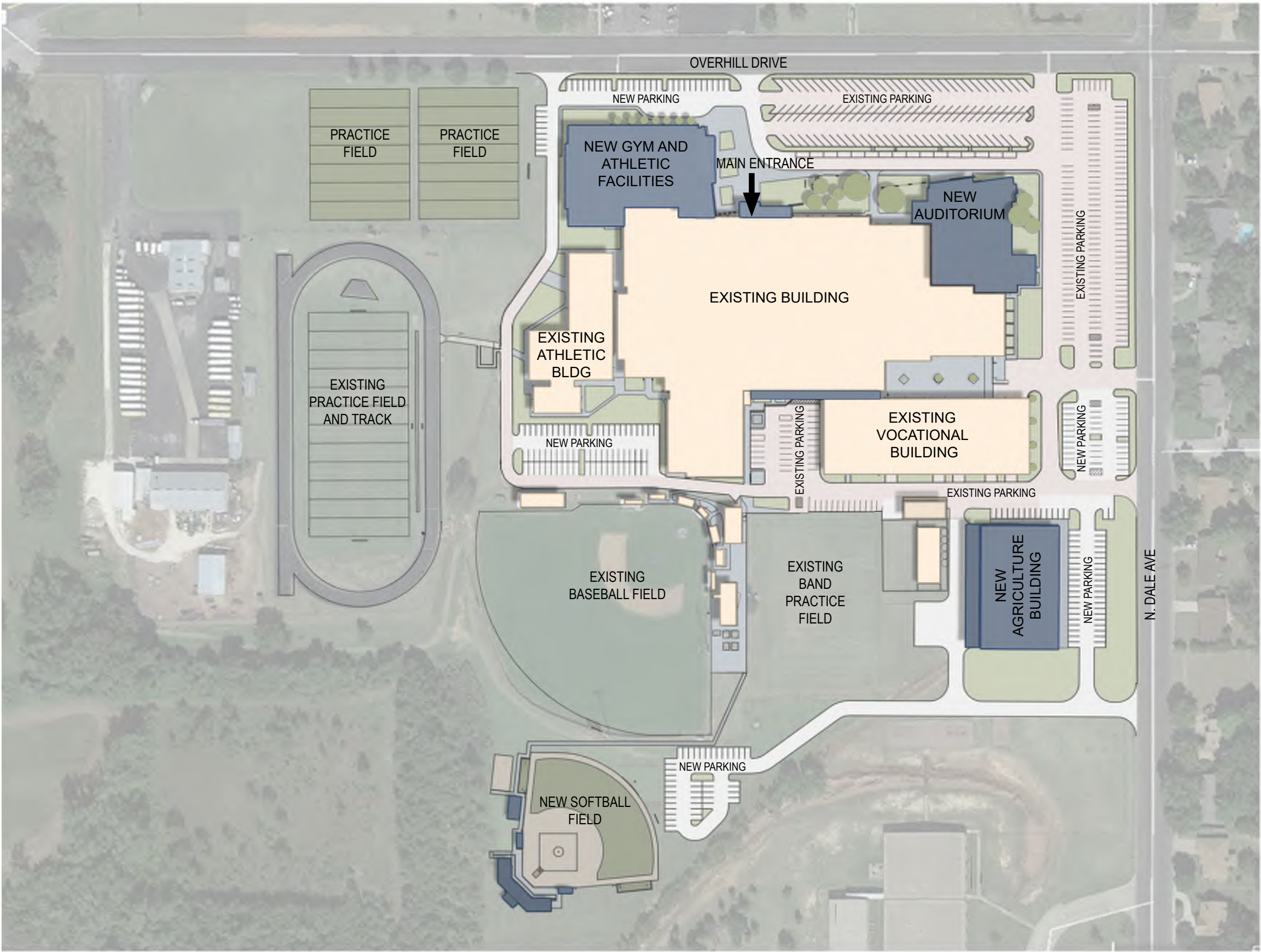




COLOR LEGEND

- 1974 - Original Build
- Built between 1974-1988
- 1988
- 1995
- 1998
- 2012





COLOR LEGEND

- Existing Buildings
- Existing Pavement
- Grass
- New Buildings
- New Pavement/Roads
- Playing Fields
- Sidewalks
- Trees

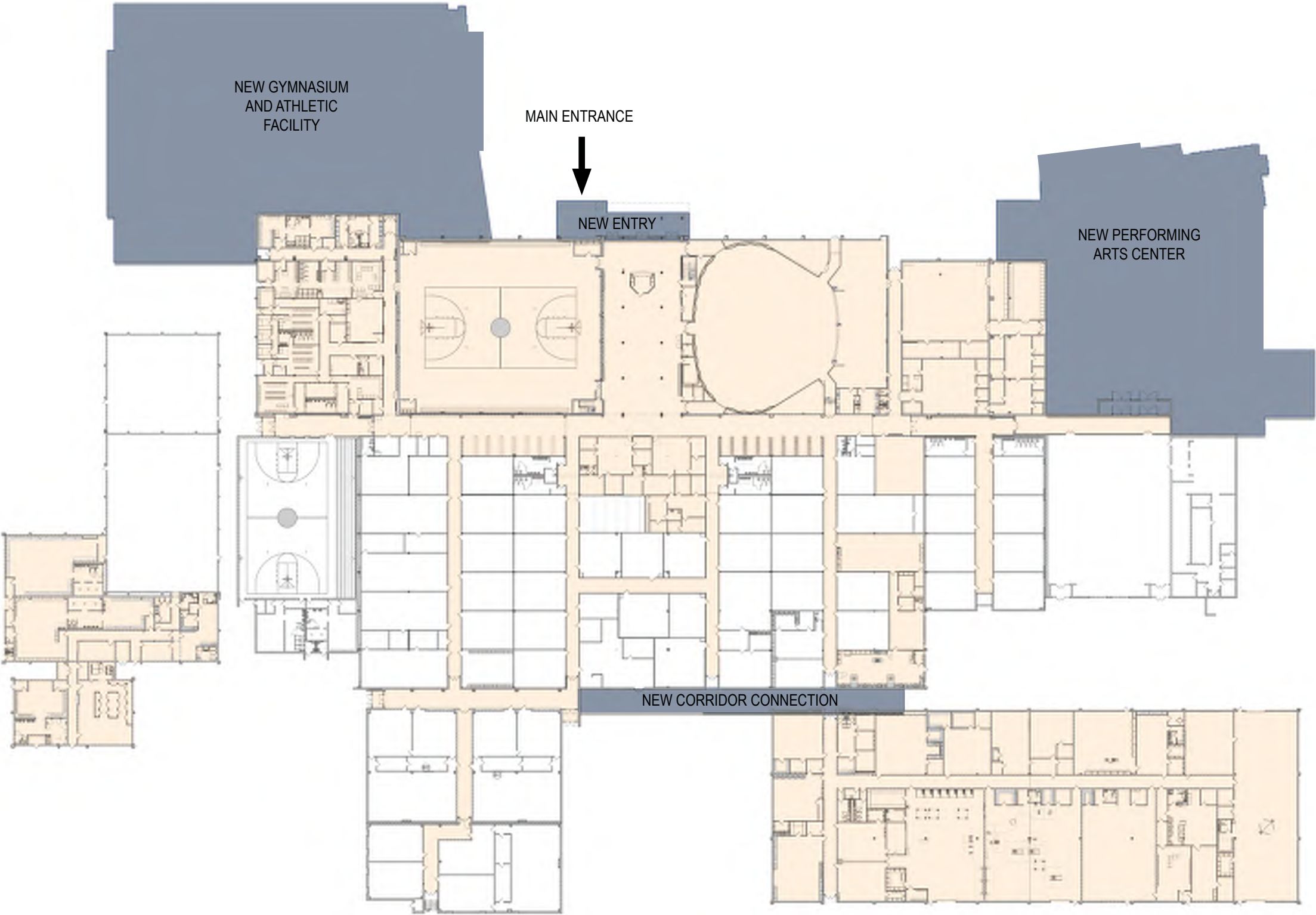
EXISTING PARKING COUNT PRIOR TO CONSTRUCTION: 456

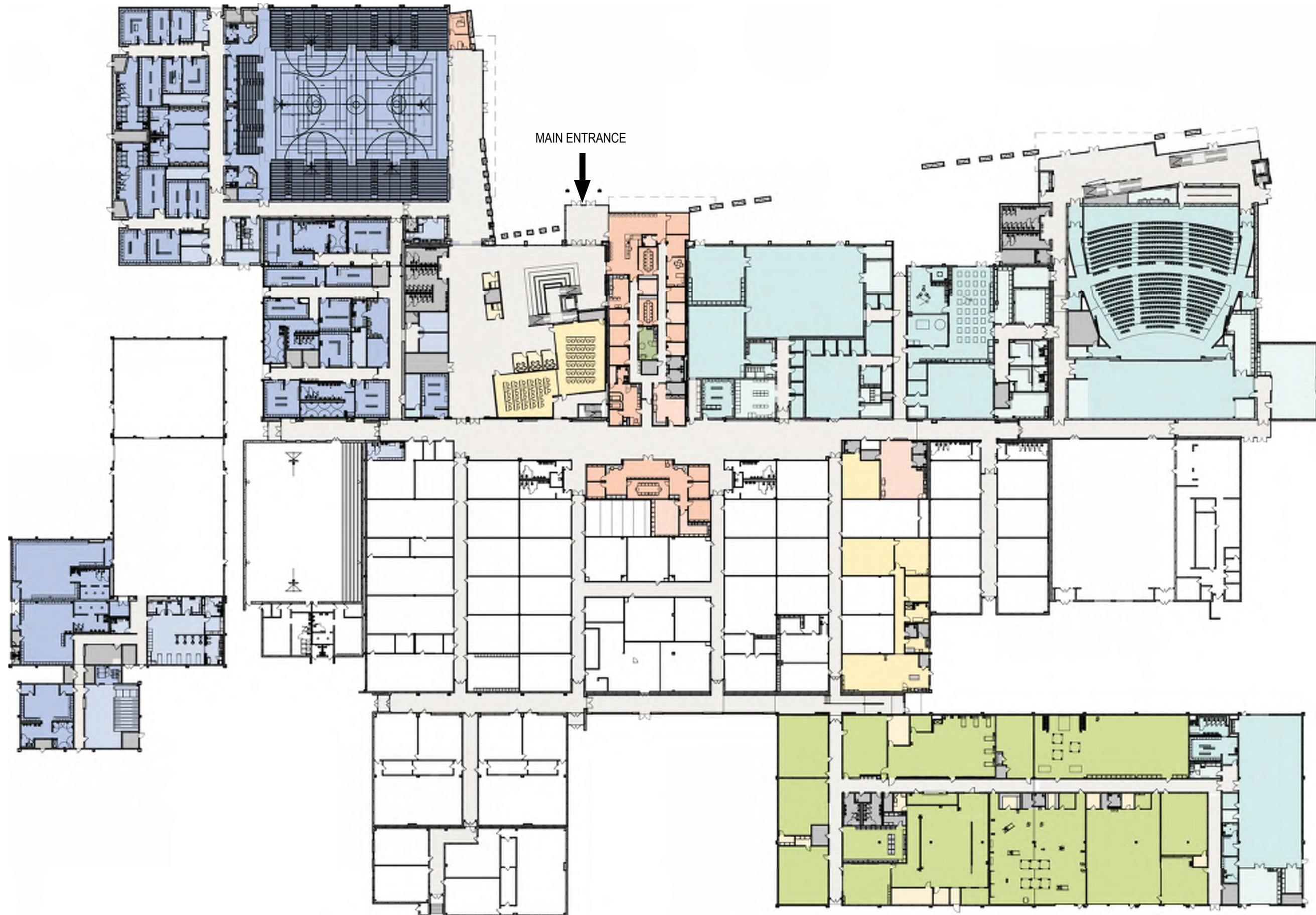
PARKING COUNT NEW DESIGN:
HIGH SCHOOL & AG: 514
SOFTBALL: 42

COLOR LEGEND

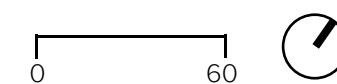
Existing Building to be Remodeled

New Construction





COLOR LEGEND	
	Academic Space
	Academic Support
	Administration
	Administration Support
	Athletic Space
	Athletic Support
	Circulation
	CTE / Agriculture
	Dining
	Fine Arts
	Fine Arts Support
	Support Space



Huckabee

STEPHENVILLE HIGH SCHOOL | STEPHENVILLE INDEPENDENT SCHOOL DISTRICT

WILLIAMGARRISONSMITHNOTFORREGULATORYAPPROVAL,PERMITTING,ORCONSTRUCTION

FLOOR PLAN - OVERALL - 4.3

COLOR LEGEND

- Academic Space
- Administration
- Administration Support
- Athletic Space
- Athletic Support
- Circulation
- Dining
- Support Space



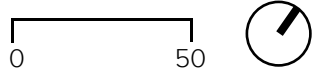
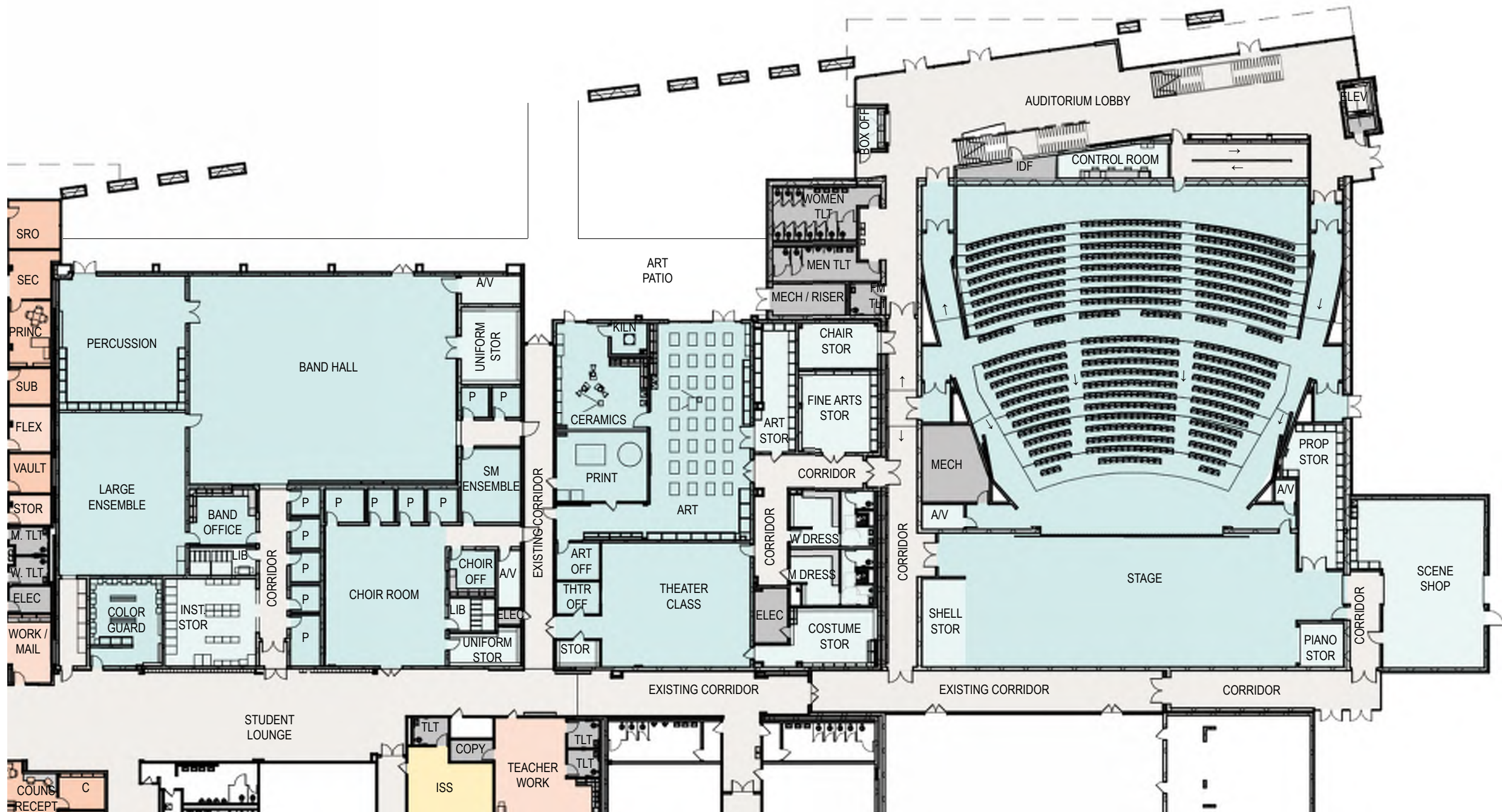
Huckabee

STEPHENVILLE HIGH SCHOOL | STEPHENVILLE INDEPENDENT SCHOOL DISTRICT
 WILLIAMGARRISONSMITHNOTFORREGULATORYAPPROVAL,PERMITTING,ORCONSTRUCTION

ENLARGED FLOOR PLAN - ATHLETICS, COMMONS, & ADMINISTRATION - 4.4

COLOR LEGEND

- Academic Support
- Administration
- Administration Support
- Circulation
- Fine Arts
- Fine Arts Support
- Support Space

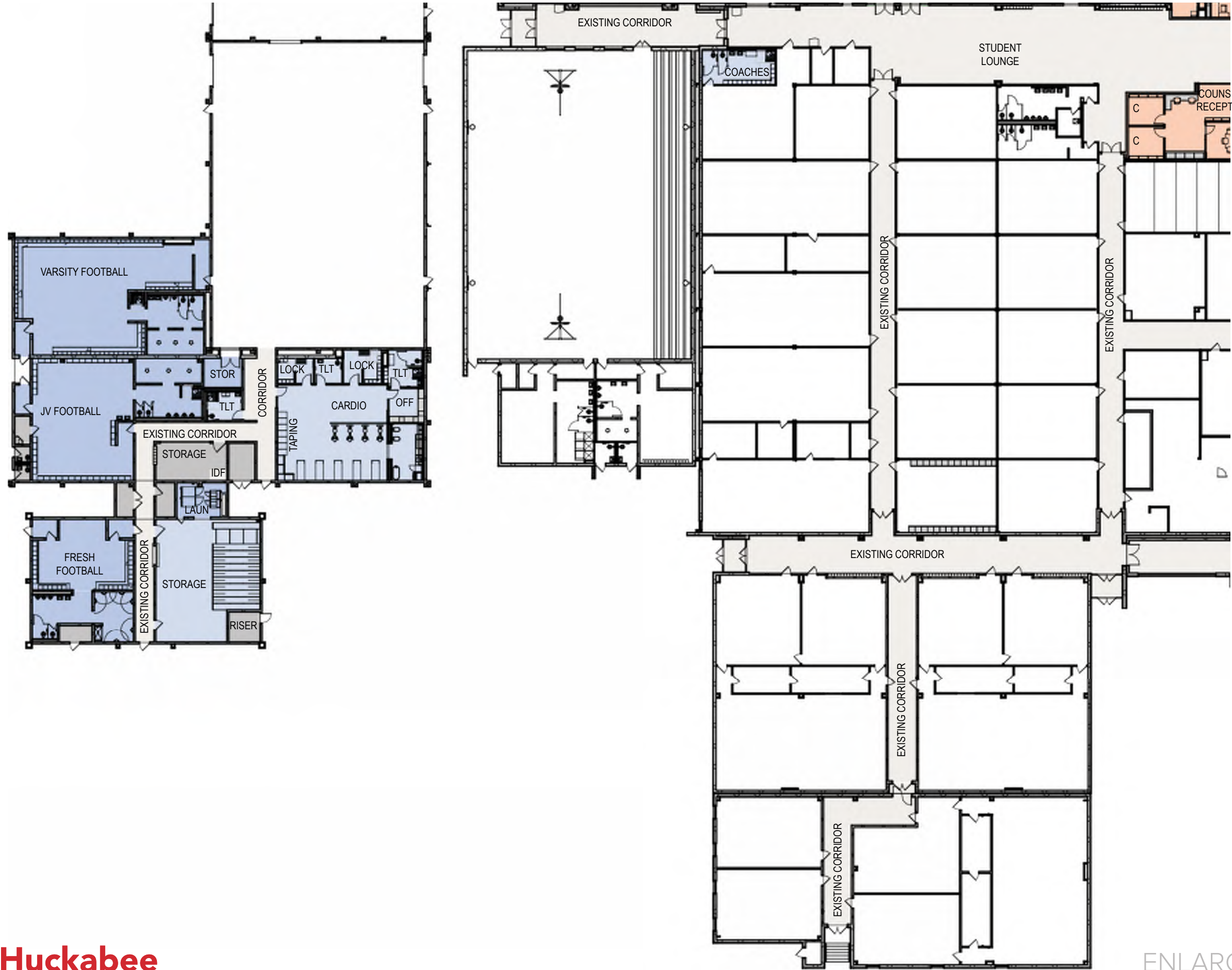


Huckabee

STEPHENVILLE HIGH SCHOOL | STEPHENVILLE INDEPENDENT SCHOOL DISTRICT

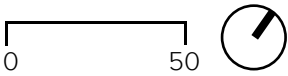
WILLIAM GARRISON SMITH NOT FOR REGULATORY APPROVAL, PERMITTING, OR CONSTRUCTION

ENLARGED FLOOR PLAN - FINE ARTS - 4.5



COLOR LEGEND

- Administration
- Administration Support
- Athletic Space
- Athletic Support
- Circulation
- Support Space

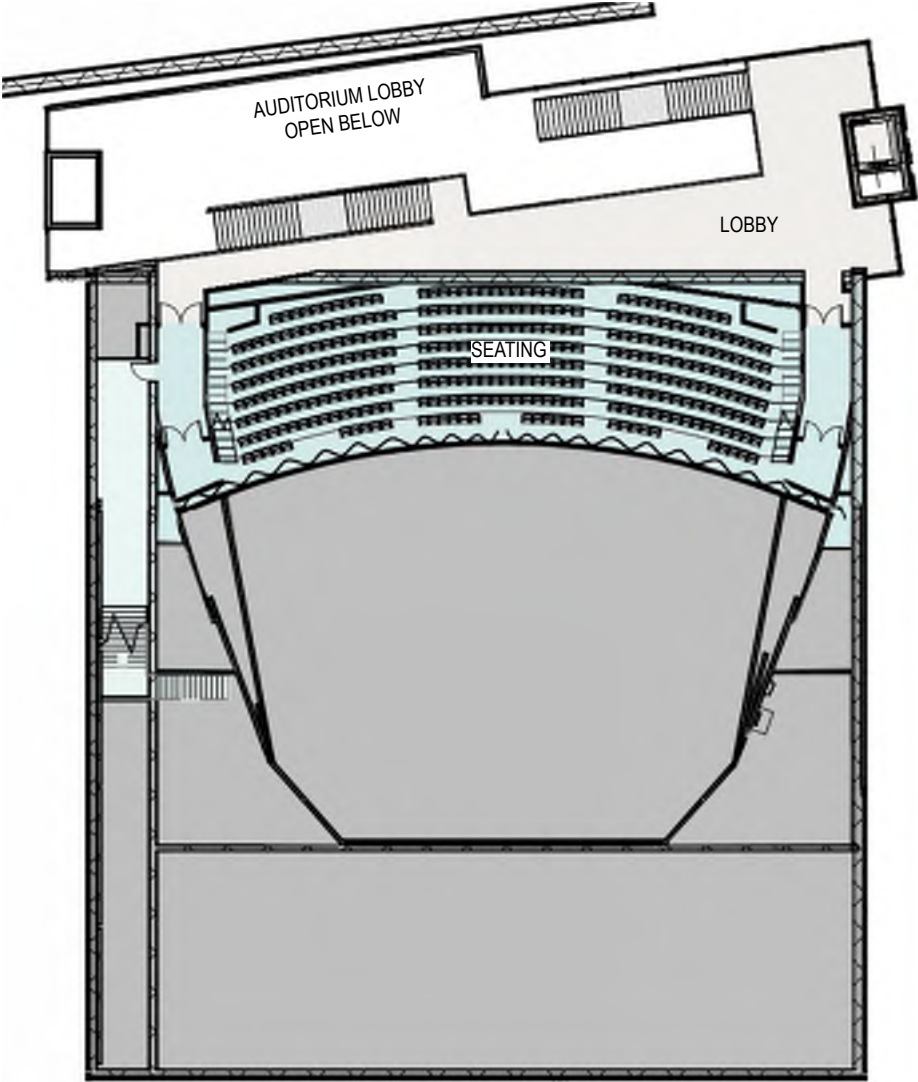


ENLARGED FLOOR PLAN - ATH. - 4.6



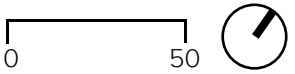
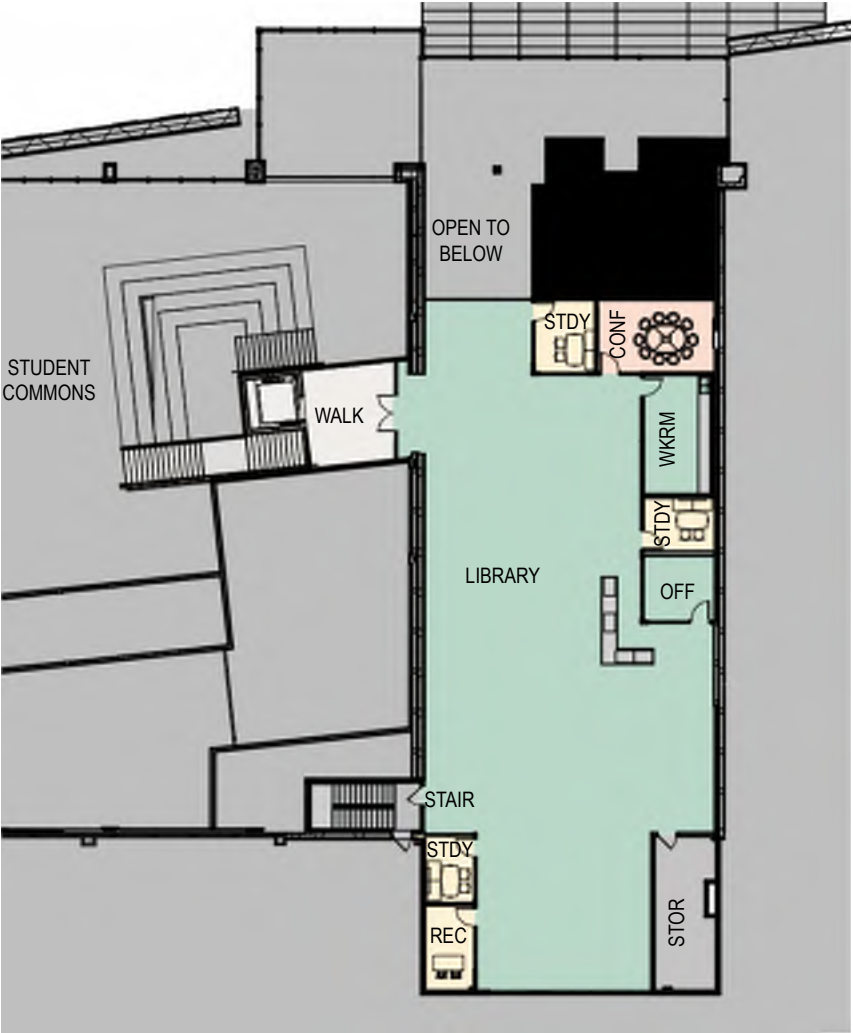
COLOR LEGEND

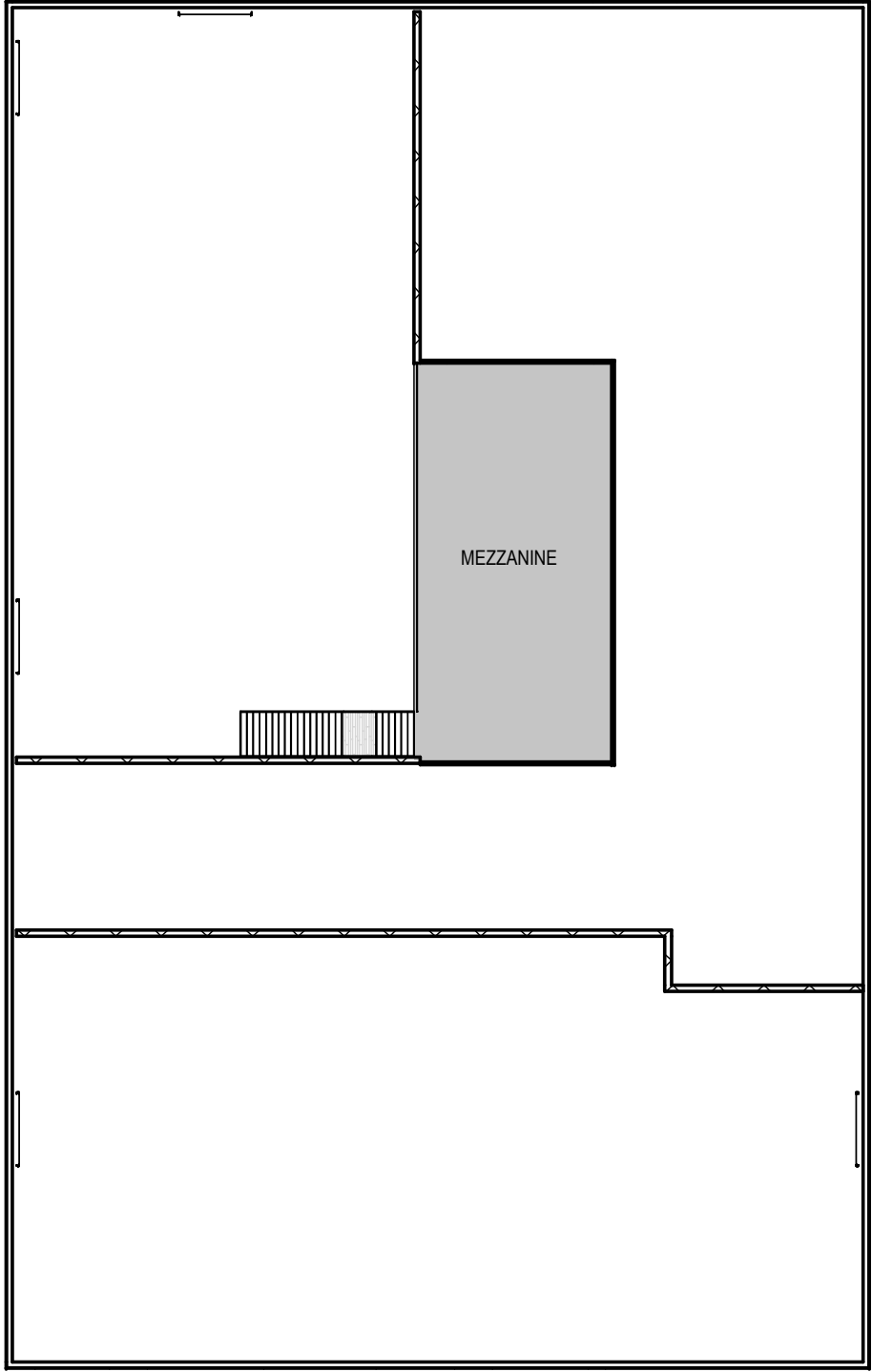
- Circulation
- Fine Arts
- Fine Arts Support



COLOR LEGEND

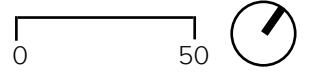
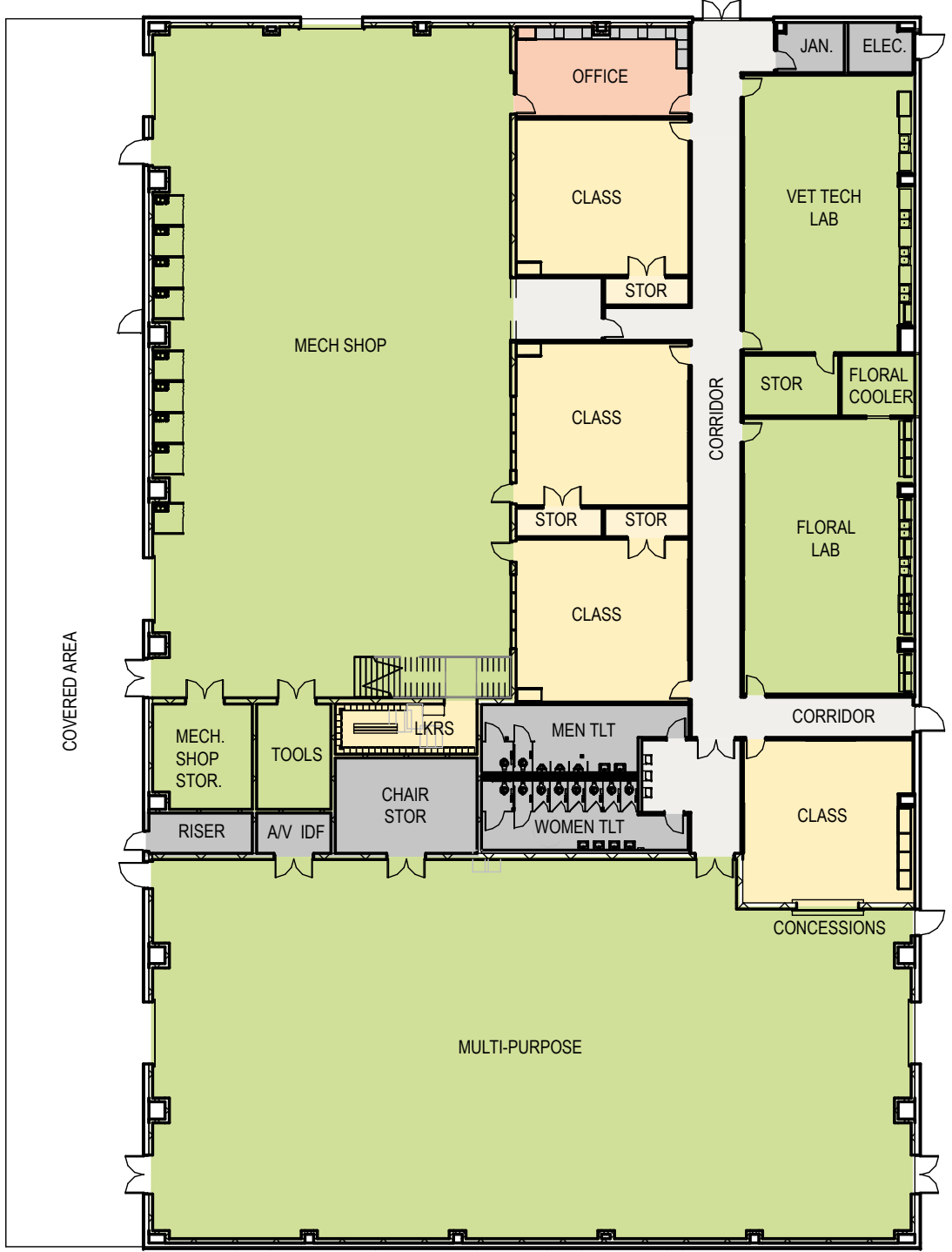
- Academic Space
- Administration Support
- Circulation
- Library





COLOR LEGEND

- Academic Space
- Academic Support
- Administration
- Circulation
- CTE / Agriculture
- Support Space







Huckabee

WILLIAM GARRISON SMITH NOT FOR REGULATORY APPROVAL, PERMITTING, OR CONSTRUCTION

EXTERIOR PERSPECTIVE - GYM ENTRANCE - 5.2

05



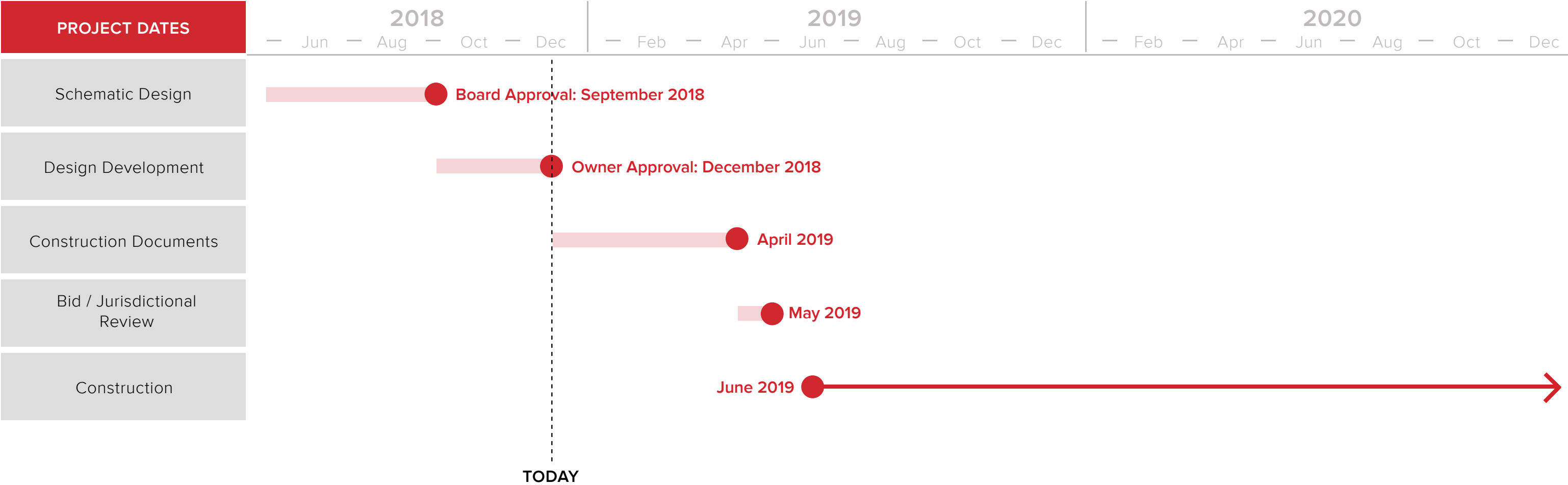
Huckabee

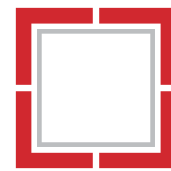
STEPHENVILLE HIGH SCHOOL | STEPHENVILLE INDEPENDENT SCHOOL DISTRICT
WILLIAM GARRISON SMITH NOT FOR REGULATORY APPROVAL, PERMITTING, OR CONSTRUCTION

EXTERIOR PERSPECTIVE - OVERALL - 5.3



STEPHENVILLE INDEPENDENT SCHOOL DISTRICT
STEPHENVILLE HIGH SCHOOL EXPANSIONS AND RENOVATIONS





MORE THAN ARCHITECTS