



ERA ISD

BOND 2022

\$12.7 M

KEY AREAS OF FOCUS

Safety and Security:

- Install fire alarm at elementary
- Security vestibule and covered walkway to main entrance at elementary
- Covered entrance to Life Skills drop-off/pick-up
- Address plumbing deficiencies at elementary
- Renovate Nurse's Clinic at elementary
- Enclose breezeway at junior high
- Restroom renovations and additions
- Exterior door and hardware replacement

Academics:

- New library to also serve as a storm shelter
- Science lab at junior high school
- Classroom additions and collaborative learning space at high school
- Pre-K classroom expansion

Infrastructure:

- Paved access drive

FOR VOTERS 65+



NO TAX INCREASE on homesteads for those having Age 65 Homestead Exemption Affidavit. For questions on how to apply, contact Cooke CAD at (940) 665-7651 or file online at www.cookecad.org

MAY 7, 2022

VOTE EARLY: APRIL 25-MAY 3

HOW WILL THE BOND AFFECT TAX RATES?

M&O RATE	I&S RATE	TOTAL TAX RATE
.872	.17	1.042
.872	.34	1.212

BEFORE BOND
AFTER BOND

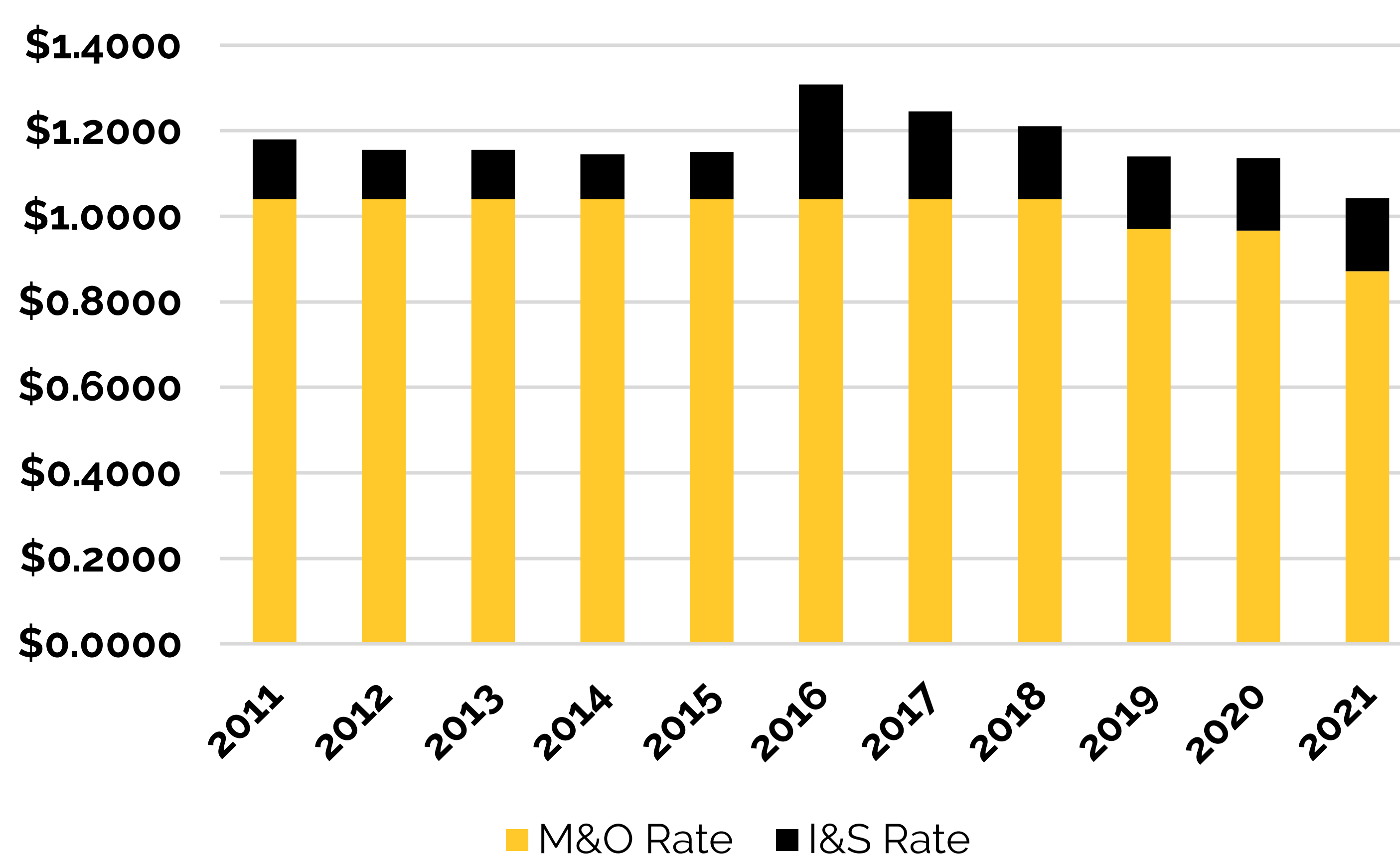
Tax rates are projected and preliminary

TAX IMPACT

HOME VALUE*	ANNUAL AMOUNT	MONTHLY AMOUNT
\$100,000	\$102	\$8.50
\$300,000	\$442	\$36.80
\$500,000	\$782	\$65.17

Projected tax impact if the \$40,000 State Exemption passes

Historical Tax Rates



BALLOT LANGUAGE

THE ISSUANCE OF \$12,720,000 OF BONDS BY THE ERA INDEPENDENT SCHOOL DISTRICT FOR CONSTRUCTING, RENOVATING, IMPROVING AND EQUIPPING SCHOOL FACILITIES AND LEVYING THE TAX IN PAYMENT THEREOF. THIS IS A PROPERTY TAX INCREASE.

FOR

AGAINST

FOR MORE INFORMATION CONTACT DR. SHANNON LUIS, SUPERINTENDENT
(940) 665-5961 OR VISIT www.eraisd.net

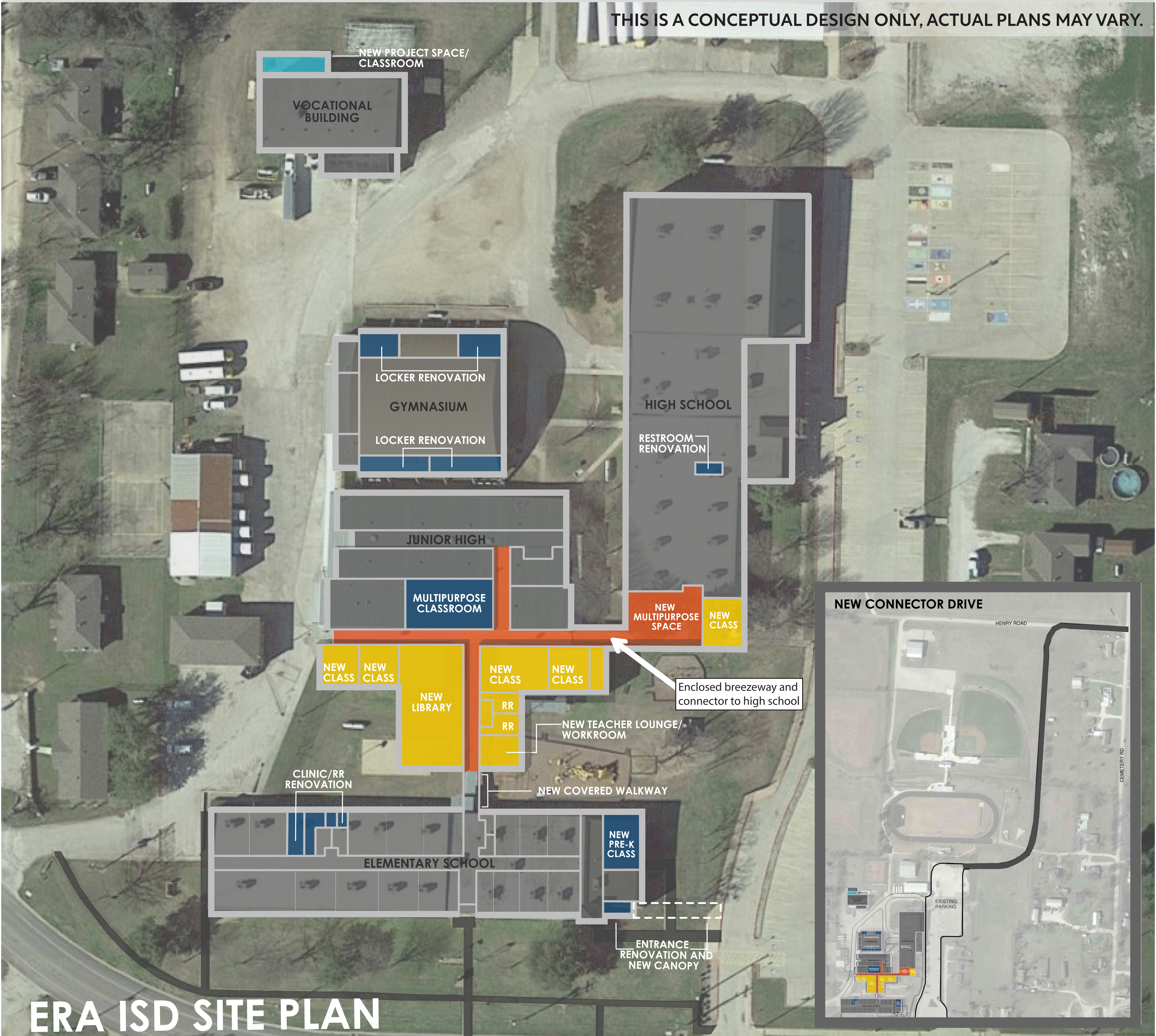


ERA ISD

BOND 2022

PROJECTED PROJECTS:

THIS IS A CONCEPTUAL DESIGN ONLY, ACTUAL PLANS MAY VARY.



ERA ISD SITE PLAN

FOR MORE INFORMATION CONTACT DR. SHANNON LUIS, SUPERINTENDENT
(940) 665-5961 OR VISIT www.eraisd.net

SCAN FOR VOTER REGISTRATION AND ELECTION LOCATIONS!

