



*Expanding Educational
Opportunities Through
Innovative Design*

February 2025



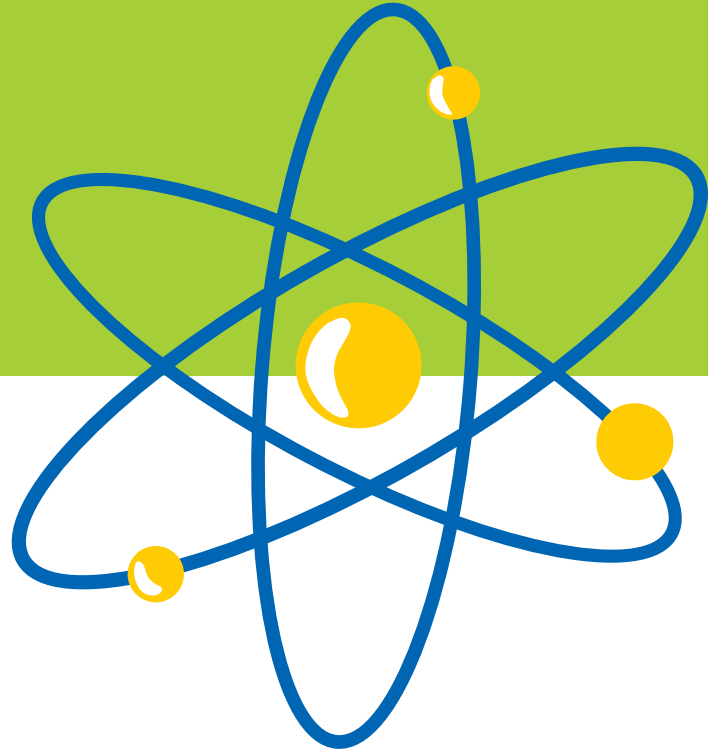
Goal



We aim to provide families, within their
high school zoned-feeder communities, opportunities to access
campuses that use innovative design models to best address their
child's unique learning potential.



Innovative Designs



STEM



Two-Way Dual
Language



International
Baccalaureate



Two-Way Dual Language



About:

Native English and native Spanish speakers participate in instruction to promote biliteracy and bilingualism.



Programs:

- Hodge Elementary
 - Pecan Creek Elementary
 - Shultz Elementary
-

Innovative Design:

Immersive learning
Cultural connections
Preparation for diverse global communities



International Baccalaureate



About:

The IB PYP program is a student-centered approach that promotes students being the agents of their own learning.

Innovative Design:

- Learner Profile
- Inquiry based
- World Connections
- Opportunities to take action

Programs:

- Borman Elementary
- Newton Rayzor Elementary

STEM

About:

National Institute for STEM Education certified campuses provide unique learning opportunities that promote student inquiry, critical thinking, and 21st century skill building.

Innovative Design:

Engineering Design Challenges

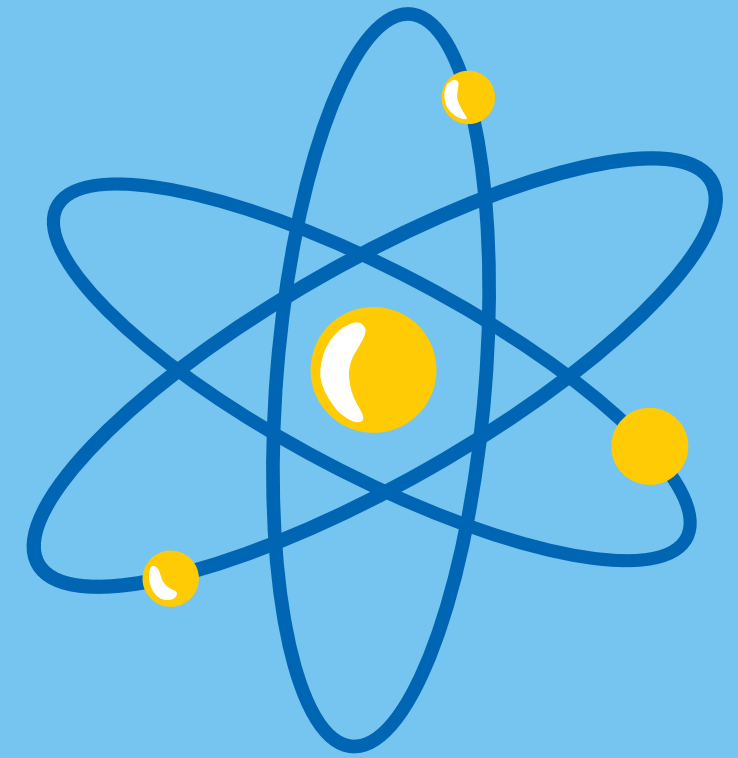
STEM Fluency Skills

Problem Based Learning

Coding, robotics, technology applications

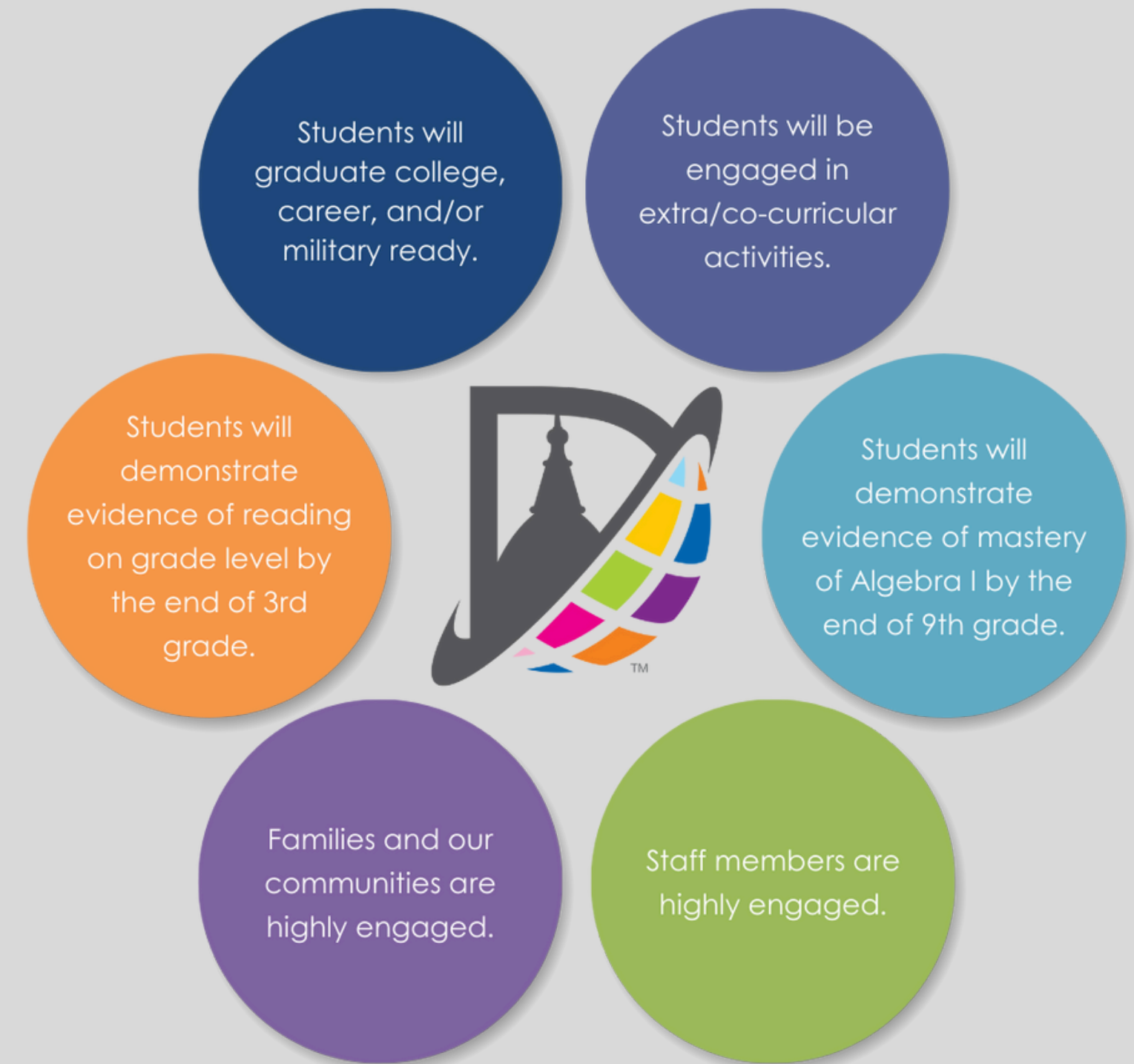
Programs:

- Alexander Elementary
- Hill Elementary
- Reeves Elementary



Desired Outcomes

*Innovative Design
Models*



Future Implications



Continue to research innovative design models for future implementation.

Provide opportunities in each zone for Denton ISD students.

Continue to strive for authentic community-based collaboration and partnerships.





Thank you

