



## UNITED INDEPENDENT SCHOOL DISTRICT AGENDA ACTION ITEM

**Topic:** Approval of Proposed Boundary Changes for 2013-2014 School Year

**Submitted by:** Mike Garza **of:** Executive Director of Support Services

**Approved for transmittal to school board:** April 15, 2014

### **Recommendations:**

Administration is recommending that the Board of Trustees approve the proposed boundary changes for school year 2013-2014 as presented for Prada Elementary and Perez Elementary. Feeder pattern will be Prada Elementary, Lamar Bruni Vergara Middle School, and Lyndon B. Johnson High School.

### **Rationale:**

They boundary changes are being proposed to provide efficient use of district facilities. Existing attendance boundaries would create overcrowding at certain facilities while other facilities would be under-utilized. This is a temporary boundary change until the proposed Cielito Lindo Elementary is constructed.

### **Budgetary Information:**

N/A

### **Board Policy Reference and Compliance**

N/A

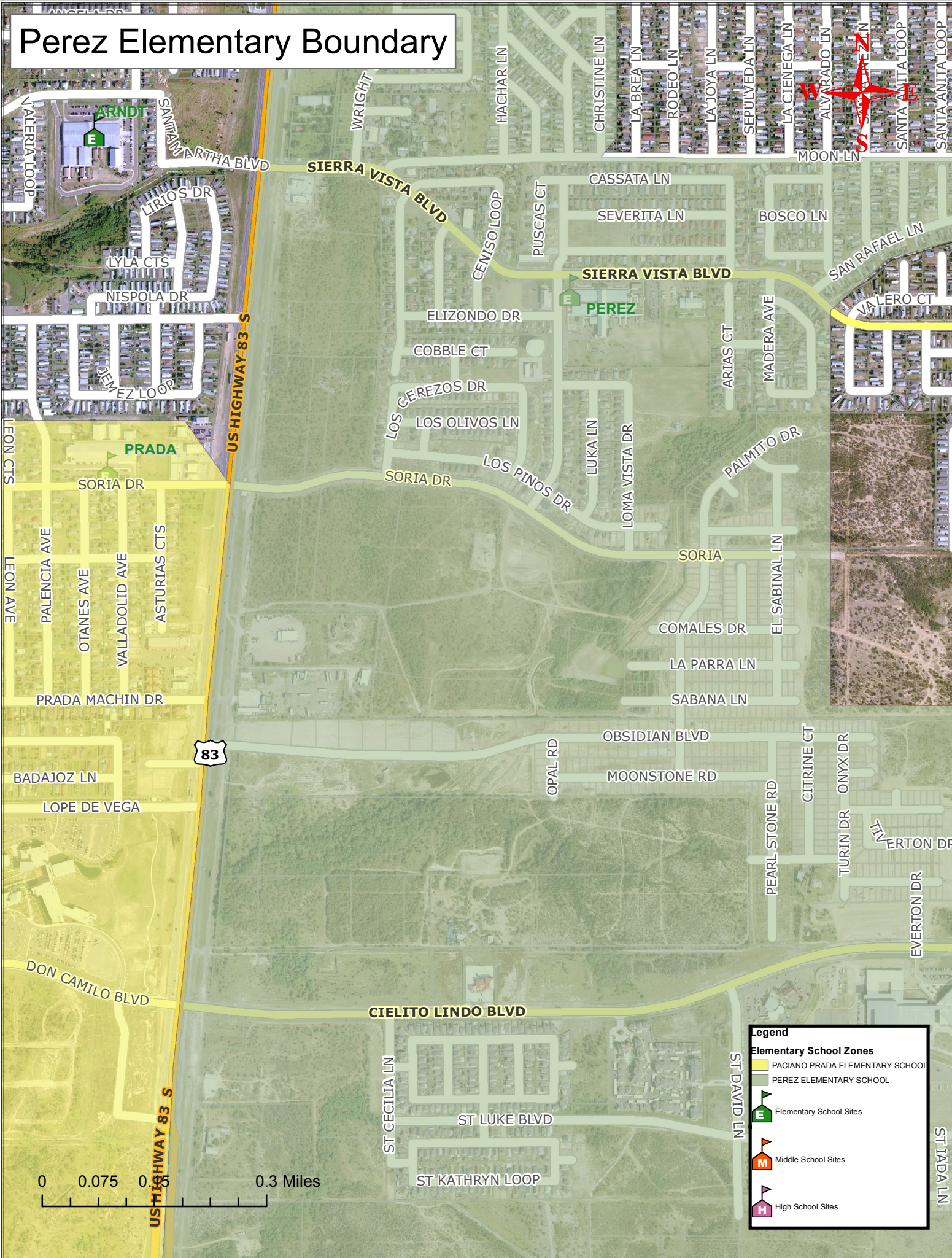
# United Independent School District

## Proposed Elementary School Attendance Boundary for 2013-2014

1. Prada Elementary School

The Northeastern boundary starts on US HWY 83 and Soria Dr, North to Casares Ct, West on Pamplona Loop to Rio Grande River, and all students living on Mangana Hein Rd (Las Presas area) and 100-220 Obsidian Blvd. to include the La Joya Apartments.

# Perez Elementary Boundary



83

US HIGHWAY 83 S

0 0.075 0.15 0.3 Miles

**Legend**

**Elementary School Zones**

- PACIANO PRADA ELEMENTARY SCHOOL
- PEREZ ELEMENTARY SCHOOL

**Elementary School Sites**

- 

**Middle School Sites**

- 

**High School Sites**

- 

ST TADA LN

# New Prada Elementary Boundary

RODOLFO CENTENO ELEMENTARY SCHOOL

