

# REOPEN

# Connecticut<sup>®</sup>

SAFER. STRONGER. TOGETHER.



---

**Governor Ned Lamont**

**Sector Rules for Reopening**

January 19, 2021

# SECTOR RULES FOR REOPENING

## GOAL

Proactively protect public health and speed up the pace of economic, educational, and community recovery while restoring Connecticut's quality of life.

# 1

### SAFETY FIRST

We will reopen society safely and securely with a proactive program that safeguards the health of our vulnerable residents, continues physical distancing, and provides clear safeguard rules for businesses and institutions deemed safe to reopen.

# 2

### SCIENCE-DRIVEN

Our strategy will rely on a scientifically validated set of public health interventions. Patient assessment, testing, proactive tracing, field studies, and public health guidance will be deployed simultaneously to contain infection.

# 3

### PREPARED

We will work closely with hospitals and health systems to procure and distribute critical personal protective equipment, and assess capacity of beds and ventilators to ensure optimal standard of care.

# 4

### CHOICE

Individual businesses within sectors allowed to open are empowered to make their own choice on when they reopen. When they open, they must comply with rules we lay out to safeguard their employees and customers.

# 5

### DYNAMIC

We include a suite of tools to inform an adaptive plan that can be nimbly scaled or rolled back rapidly based on real-time critical health metrics.

# SECTOR RULES FOR REOPENING

## HOW WE WILL OPEN OUR ECONOMY SAFELY

Our plan to open the economy will address two factors:

**WHAT** businesses can open and when.

**HOW** businesses must operate **if they choose to open**.

### WHAT:

- We know that some businesses put employees and customers at greater risk of transmission.
- We will prioritize opening businesses that pose a lower transmission risk and drive outsized impact on the economy.
- Transmission risk is defined as contact intensity and modification potential of businesses.
  - Contact intensity considers contact proximity, contact length, and number of contacts.
  - Modification potential considers the businesses' ability to socially distance and sanitize in accordance with regulations.
- We will assess the impact on state economic health with a focus on number of employed individuals, total GDP impacted, and impact on small businesses that make up the backbone of our economy.

### HOW:

- We will provide clear operational guidance to businesses on how to reopen while ensuring the safety of both employees and customers.
- Guidance will include social distancing and hygiene, as well as the use of personal protection – for business operators, workers, and customers.
- The goal is to not only open safely, but create confidence in our society across employers, employees, and customers.
- The level of guidance will gradually become less restrictive over time, as our confidence in the ability to monitor and contain the disease increases.

# SECTOR RULES FOR REOPENING

## WHAT: SECTOR REOPENING OVER TIME

**The state will open its economy with a gradual approach.**

The first set of businesses started reopening when we saw a sustained 14-day decline in hospitalizations, had adequate testing capacity, had a contact tracing system in place, and had procured sufficient PPE. The timing for that reopen was May 20th.

<b>ALWAYS OPEN</b>	Manufacturing Construction Real estate	Utilities Essential retail Child care	Hospitals
<b>MAY 20TH</b>	Restaurants (outdoor only, no bar areas) Outdoor recreation (limited capacity)	Remaining retail Offices (continue WFH where possible)	Museums, Zoos (outdoor only) University research
<b>JUNE 1ST</b>	Hair salons, Barbershops		
<b>JUNE 17TH</b>	Restaurants (outdoor, indoor, no bar areas) Hotels/Lodging All personal services Indoor recreation	Sports, Sports clubs & complexes, Gyms, Fitness centers, Pools Outdoor arts, Entertainment, Events (limited capacity)	Amusement parks Libraries Museums, Zoos, Aquariums Social clubs
<b>JULY 20TH</b>	Indoor events	Outdoor events	
<b>SEPTEMBER 1ST</b>	Senior Centers		
<b>OCTOBER 8TH</b>	Indoor Performing Arts Venues		

# SECTOR RULES FOR REOPENING

## HOW: SAFEGUARDS

As we continue to reopen businesses, we will open at our strictest controls on business operations and societal interaction. This will include, among other measures:

- Capacity limit of 50% for most businesses that reopen.
- Strict cleaning and disinfection protocols in all settings.
- Those who can work from home should continue to do so.
- Those in high-risk groups (comorbidities) and over the age of 65 should continue to stay safe and stay home.
- Facemasks should continue to be worn in public at all times.
- Social gatherings will be restricted in accordance to the Governor's executive order.

As we see progress on a defined set of public health metrics (detail to follow), we will gradually loosen safeguards. This will allow for the next set of businesses to open and potentially for businesses already open to operate with additional leeway. We expect this will occur over the coming months.

As always, we will make decisions based on data and science. Our plan intentionally allows for sufficient time for learning, adoption of behaviors, and ultimately the achievement of improved health metrics that create the necessary environment for new business operations. If public health metrics deteriorate, the State may choose to revert back to stricter safeguards.



**SPORTS, SPORTS CLUBS &  
COMPLEXES, GYMS,  
FITNESS CENTERS, &  
POOLS**

# SPORTS, SPORTS CLUBS & COMPLEXES, GYMS, FITNESS CENTERS, & POOLS

Sport clubs and complexes, gyms, fitness centers, and pools can be open in the current phase. Sports must follow [DECD Sector Rules and CT DPH Guidance](#).

Gyms, sports clubs, and fitness centers that do not provide organized sports shall operate at 50% capacity. Small fitness studios and other centers that generally only offer group class instruction shall **also** be limited to **50%**. All gyms, sports clubs and fitness centers shall require customers to wear a mask at all times and maintain 6 ft of space between equipment and people.

Pools shall be allowed to open and must follow applicable rules below.

## BUSINESS HOURS

Pursuant to EO 9K, businesses may be subject to mandatory closing times which may be updated from time to time. All currently effective closing time mandates will be posted at the DECD Sector Rules page at: <https://portal.ct.gov/DECD/Content/Coronavirus-Business-Recovery/Sector-Rules-and-Certification-for-Re-open>

## OVERVIEW

As sports, sports clubs and complexes, gyms, fitness centers, and pools the most important consideration will be the health and safety of athletes, coaches, employees, and customers. Businesses and leagues must exercise caution throughout the reopening, ensuring strict adherence to the protocols listed here. Those businesses and leagues that are not able to meet the rules listed here, shall delay opening until they are able.

While these rules provide a way for sports, sports clubs and complexes, gyms, fitness centers, and pools to reopen in as safe a manner as possible, risks to athletes, coach's, and employees, cannot be fully mitigated. Athletes, coaches, employees and customers who choose to visit/partake in these activities during this time should be fully aware of potential risks. Individuals over the age of 65 or with other health conditions should not visit/partake in gyms, fitness, sports clubs and facilities, and organized sports, but instead continue to stay home and stay safe.

Businesses and leagues should take these rules as the minimum baseline of precautions needed to protect public health in Connecticut. Individual businesses and leagues should take additional measures as recommended by industry guidelines or by common sense applied to their particular situation.

We urge athletes, coaches, employees, and customers to stay vigilant and pay attention as to whether the gyms, fitness, and sports clubs they frequent are faithfully implementing these rules.



### IHRSA

<https://www.ihrsa.org/improve-your-club/coronavirus-re-sources-for-health-clubs/>

### OSHA

<https://www.osha.gov/Publications/OSHA3990.pdf>

### CENTERS FOR DISEASE CONTROL AND PREVENTION

<https://www.cdc.gov/coronavirus/2019-ncov/community/schools-childcare/youth-sports.html>

### CIAC

<https://www.http://ciacsports.com/site/>

# SPORTS, SPORTS CLUBS & COMPLEXES, GYMS, FITNESS CENTERS, & POOLS

## PLAN FOR REOPENING

Share these rules with your employees and inform them of any additional specific measures being taken in response to COVID-19.

## PROGRAM ADMINISTRATOR

Appoint a program administrator who is accountable for implementing these rules.



## CLEANING PLAN

Develop cleaning checklists that incorporate these rules. Ensure it is clear which employees are responsible for implementing the plans.

## TRAINING

The employer shall institute a training program and ensure employee participation in the program. Training shall be provided at no cost to the employee and during working hours. The training materials shall be presented in the language and at the literacy level of the employees. Employers shall continuously update staff on changes to these Sector Rules. The training shall include:

- Guidelines outlined in this document
- Protocols on how to clean and use cleaning products (incl. disinfectants) safely
- Additional guidance can be found here:  
[https://osha.washington.edu/sites/default/files/documents/FactSheet\\_Cleaning\\_Final\\_UWDEOHS\\_0.pdf](https://osha.washington.edu/sites/default/files/documents/FactSheet_Cleaning_Final_UWDEOHS_0.pdf)

**NOTE:** If any on-site duties are subcontracted, it is the employer’s responsibility to ensure subcontractors are also appropriately trained.



## PERSONAL PROTECTION

Estimate required personal protection for employees and begin procuring.



## THOROUGH CLEANING

Complete a thorough cleaning of facility prior to reopening, including:

- Bathrooms
- Equipment
- Desks/work stations



## LOG EMPLOYEES

Maintain a log of employees on-premise over time, to support contact tracing.



## SHIFTS

Stagger shift start/stop times and break times to minimize contact across employees.



# SPORTS, SPORTS CLUBS & COMPLEXES, GYMS, FITNESS CENTERS, & POOLS



## CAPACITY TRACKING

Employers are responsible for enforcing revised capacity limits (50%).

For facilities with central ventilation systems, increase ventilation rates and increase the percentage of outdoor air that circulates into the system where possible.

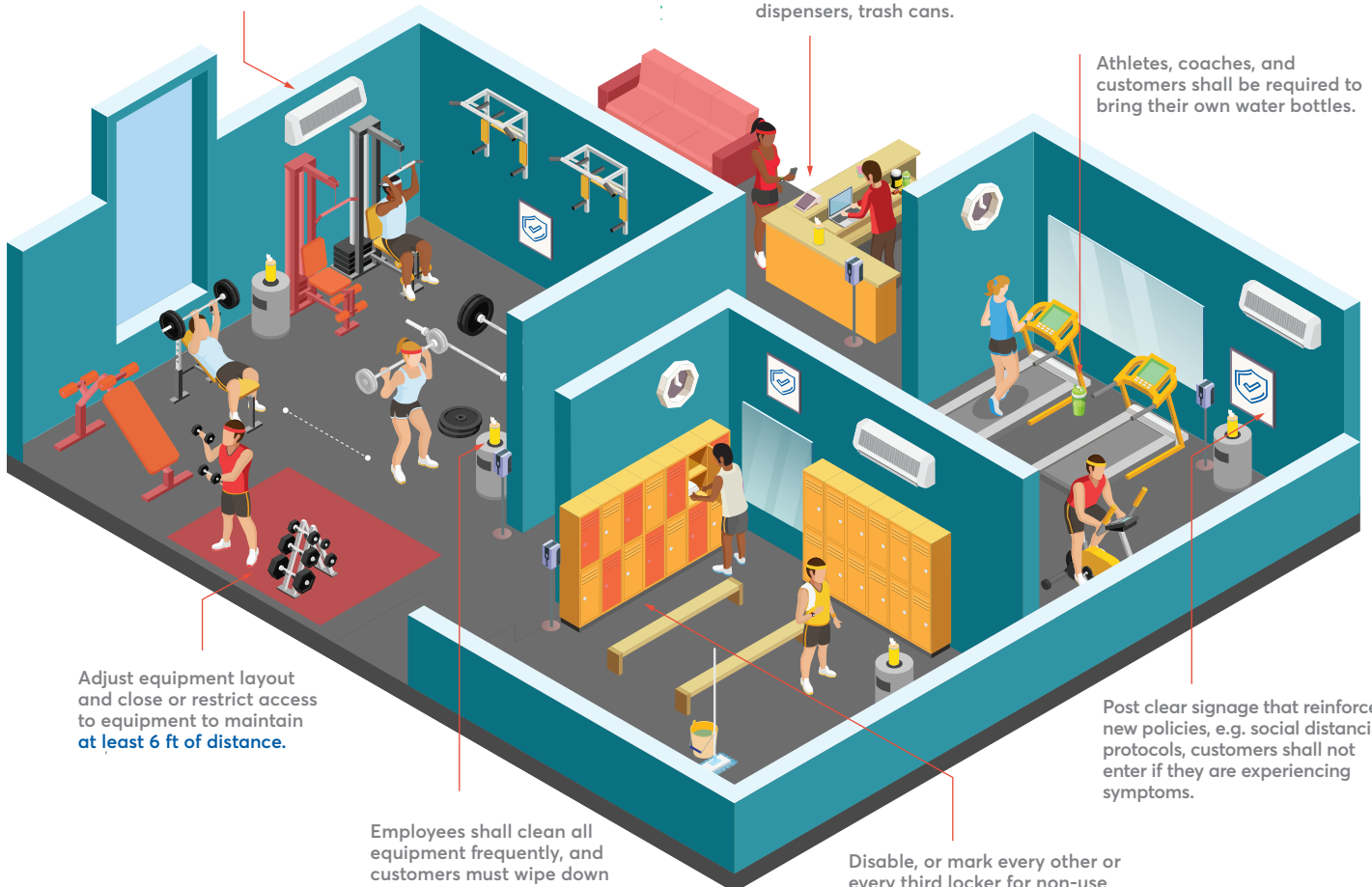


## CERTIFICATION

Complete the self-certification on the DECD website to receive a Reopen CT badge. Once complete, businesses can choose to post the badge on-site and on social media to advertise adherence to CT rules and build customer confidence.

Install touchless appliances wherever possible, including contactless payments, paper towel dispensers, soap dispensers, trash cans.

Athletes, coaches, and customers shall be required to bring their own water bottles.



Adjust equipment layout and close or restrict access to equipment to maintain at least 6 ft of distance.

Employees shall clean all equipment frequently, and customers must wipe down equipment after each use. This includes free weights.

Disable, or mark every other or every third locker for non-use to enforce 6 ft social distancing requirement.

Post clear signage that reinforces new policies, e.g. social distancing protocols, customers shall not enter if they are experiencing symptoms.

# SPORTS, SPORTS CLUBS & COMPLEXES, GYMS, FITNESS CENTERS, & POOLS

## ENTRY & EXIT

Consider an exit from the facility separate from the entrance to allow for one-way foot traffic.



## SIGNAGE

Post clear signage that reinforces new policies, e.g.:

- Social distancing protocols
- Cleaning and disinfection protocols
- Personal protection protocols (facemasks, gloves)
- Employees shall stay home if sick/experiencing symptoms
- Customers shall not enter if they are experiencing symptoms
- Additional signage can be found here:

<https://portal.ct.gov/DECD/Content/Coronavirus-Business-Recovery/COVID-19-Signage-for-Download>



## VENTILATION

For facilities with central ventilation systems, increase ventilation rates and increase the percentage of outdoor air that circulates into the system where possible. For facilities where a central ventilation system is not used, window air conditioning units or unit ventilators should be adjusted to maximize fresh air intake into the system; blower fans should be set on low speed and pointed away from room occupants to the extent possible. Ceiling fans should be adjusted so that fins are rotating in a direction that draws air up toward the ceiling rather than down onto occupants. Window fans should be turned to exhaust air out of the window in the direction of the outdoors. Window fans that blow air into a room or free-standing fans that only serve to circulate existing air around a room should not be used.



## FACILITIES

Temporarily close common areas and check-in counters (unless touchless) where customers or employees may congregate.



## SOCIAL DISTANCING MARKERS

Install visual social distancing markers to encourage customers to remain 6 ft apart (e.g. the entrance to the facility, locker rooms, class spaces, fan areas).



## TIMING

Consider limiting length of activities to avoid unnecessary exposure, decrease congestion, and allow for additional sanitization.



## LAYOUT

Adjust equipment layout and close or restrict access to equipment to maintain at least 6 ft or 12 ft of distance between equipment.

# SPORTS, SPORTS CLUBS & COMPLEXES, GYMS, FITNESS CENTERS, & POOLS



## INTRADAY CLEANING

Employees shall clean all equipment frequently, and customers must wipe down equipment after each use. This includes free weights.



## DUMBBELLS/FREE WEIGHTS

Establish and clearly mark "workout zones" for use of dumbbells and free weights.

- Free weight exercises that require a spotter can only be performed if both parties are wearing a mask.



## DISCRETE WORK ZONES FOR EMPLOYEES

Employees should be assigned specific areas to clean and disinfect within the facility to prevent omitting areas that need attention.



## SHARED EQUIPMENT

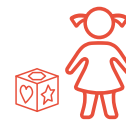
Shared machinery and equipment shall be thoroughly cleaned after every use.



## TOUCHLESS APPLIANCES

Install touchless appliances wherever possible, including:

- Contactless payments, paper towel dispensers, soap dispensers, trash cans



## NON-ESSENTIAL AMENITIES

- Close or remove amenities non-essential to businesses' main function (e.g. arcades)
- Drop-in child care is allowed, with no more than 1 child per 35 sq ft or 10 children per classroom, whichever is fewer; businesses should follow all other health and safety guidelines put forward by the Office of Early Childhood



## HOTLINE FOR VIOLATIONS

Post clear signage that includes the state hotline (211) for employees and customers to report potential violations of these rules.



## FRONT DESKS

Front desks should be outfitted with Plexiglas or other similar type of barrier.

# SPORTS, SPORTS CLUBS & COMPLEXES, GYMS, FITNESS CENTERS, & POOLS



## LOCKER ROOMS

Locker rooms shall not exceed 50% capacity and patrons shall not mingle or congregate. Lockers in use shall have a minimum of 6 ft between each. All other lockers shall be disabled or marked for non-use.

- Facilities where lockers are assigned to members are not required to disable lockers but must enforce social distancing requirement
- Remove any casual seating other than benches by lockers as necessary
- Disable or close-off steam rooms and saunas
- Showers allowed
  - If showers are separated by physical barriers all can be used
  - Open showers shall not be used unless allowing only 1 person at a time
  - Need to clean and disinfect frequently



## WATER FOUNTAINS

Athletes, coaches, and customers shall be required to bring their own water bottles. Water fountain use shall be restricted to water bottle filling stations only. Congregating at water bottle filling stations shall be limited and signage reinforcing the use of water bottle filling stations only must be displayed



## CONCESSION STANDS

Allowed to open but must follow Sector Rules for Restaurants.

- Sales of only prepackaged food and drink does not have to follow Sector Rules for Restaurants

# SPORTS, SPORTS CLUBS & COMPLEXES, GYMS, FITNESS CENTERS, & POOLS

## TANNING BEDS

Must be thoroughly cleaned and sanitized after every use.



## MASSAGE THERAPY

Must follow Sector Rules for Personal Services.



## HOT TUBS

Limited to 1 per person.



## BASKETBALL COURTS

Allowed to be utilized for group fitness activities. Basketball related activities must follow DECD Sector Rules and DPH Guidance.



## PICKLEBALL/PADDLE TENNIS

Allowed. Must follow DECD Sector Rules and DPH Guidance.



## TENNIS

Follow USTA guidelines and DECD Sector Rules and DPH Guidance.



## SQUASH/RACQUETBALL

Allowed. Must follow DECD Sector Rules and DPH Guidance.



## OUTDOOR CLASSES

Group classes should be held outdoors or virtually to the most extent possible while maintaining 6 ft of social distancing at all times.



## INDOOR

Indoor group classes shall only be held at 50% capacity of space where class is taking place while maintaining 6 ft of social distancing at all times. Space should be thoroughly cleaned after every use. Both instructors and customers shall wear a mask.



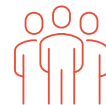
## SCHEDULING

Customers shall schedule their participation in a group fitness classes in advance of arriving. Sufficiently adjust class schedules to allow for deep cleaning between classes.



## COHORTS

it is encouraged to build cohorts for group fitness classes.



## SWIM TRAINING

Follow USA Swimming guidelines and DECD Sector Rules and DPH Guidance.



# SPORTS, SPORTS CLUBS & COMPLEXES, GYMS, FITNESS CENTERS, & POOLS

## CAPACITY

Pools that serve more than one household may open only for regulated lap swimming with one person per lane. Lanes must be a minimum of 6 ft wide. Advance registration for lap swimming is encouraged.

Pool deck observers are discouraged. If parent/guardians are necessary, only one per swimmer is allowed, they must wear a mask, and remain at least 6 ft apart.

Swim lessons may allow an instructor and student in one lane with all pairs maintaining 12 ft of separation throughout the class or utilizing every other lane. Swim aerobic participants should maintain distance of 12 ft throughout class or utilize every other lane.



## CLEANING & DISINFECTION

Clean and disinfect frequently touched surfaces at least daily and more frequently depending on usage.

- Handrails, slides, diving boards, starting blocks, structures for climbing or playing
- Lounge chairs, tabletops, pool noodles, kickboards, balls
- Door handles and surfaces of restrooms, handwashing stations, and diaper-changing stations

## PATRONS

Should arrive in swimsuits and shower prior to arriving.



## MODIFIED LAYOUTS

Change deck layouts to ensure that in the standing and seating areas, individuals can remain at least 6 ft apart.



## SWIM LESSON AND SWIM AEROBICS

Allowed with a maximum of one instructor and one student in a lane with all pairs maintaining 12 ft of separation throughout class or utilizing every other lane. Swim aerobic participants should maintain distance of 12 ft throughout class or utilize every other lane.

# SPORTS, SPORTS CLUBS & COMPLEXES, GYMS, FITNESS CENTERS, & POOLS



## PHYSICAL BARRIERS & GUIDES

Provide physical cues or guides (e.g. lane lines in the water or chairs and tables on the deck) and visual cues (e.g. tape on the decks, floors, or sidewalks); and signs to ensure that staff, patrons, and swimmers stay at least 6 ft apart from those they don't live with, both in and out of the water.



## LIFE GUARDS

Additional information on lifeguards can be found here:

[https://portal.ct.gov/-/media/Departments-and-Agencies/DPH/dph/environmental\\_health/COVID-19/COVID-19\\_Reopening-Recreational-Areas-and-Public-Pools\\_051920\\_FINAL.pdf](https://portal.ct.gov/-/media/Departments-and-Agencies/DPH/dph/environmental_health/COVID-19/COVID-19_Reopening-Recreational-Areas-and-Public-Pools_051920_FINAL.pdf)

- Additional information can be found here: <https://www.cdc.gov/coronavirus/2019-ncov/community/parks-rec/aquatic-venues.html>



## SHARED OBJECTS

No sharing of personal and/or facial items such as goggles, nose clips, snorkels, or caps.

## USA SWIMMING FACILITY REOPENING

[https://www.usaswimming.org/docs/default-source/coaching-resourcesdocuments/covid-19-team-resources/facility-reopening-plan-guidelines.pdf?sfvrsn=8a533a32\\_2](https://www.usaswimming.org/docs/default-source/coaching-resourcesdocuments/covid-19-team-resources/facility-reopening-plan-guidelines.pdf?sfvrsn=8a533a32_2)

## USA DIVING GUIDANCE

<https://www.teamusa.org/USA-Diving/USA-Diving-Return-to-Training-Guidelines>

## US SWIM SCHOOL ASSOCIATION GUIDANCE

[https://www.usaswimming.org/docs/default-source/coronavirus-resources/ussa\\_covid19actionplan\\_final.pdf?sfvrsn=c973b32\\_0](https://www.usaswimming.org/docs/default-source/coronavirus-resources/ussa_covid19actionplan_final.pdf?sfvrsn=c973b32_0)

## ARTISTIC SWIMMING GUIDANCE

[https://www.usaswimming.org/docs/default-source/coronavirus-resources/back-to-the-pool-5-12-20.pdf?sfvrsn=3d973b32\\_0](https://www.usaswimming.org/docs/default-source/coronavirus-resources/back-to-the-pool-5-12-20.pdf?sfvrsn=3d973b32_0)

# SPORTS, SPORTS CLUBS & COMPLEXES, GYMS, FITNESS CENTERS, & POOLS

## SPORTS GUIDANCE – EFFECTIVE JANUARY 19, 2021

In addition to DECD Sector Rules guidance below, all sports teams and leagues must also follow full CT DPH Sports Guidance.

### GENERAL GUIDANCE

- Low and Moderate Risk sports (basketball, ice hockey, gymnastics, indoor track, swimming, etc.):
  - Practices can begin **January 19**.
  - Competitions can begin **February 1**.
- Masks are required in Gyms and Fitness Centers, no exceptions.
- Masks are required by all participants, spectators and coaches at any indoor or outdoor sports activity at all times, including active play.
  - However, where the nature of play is such that two or more athletes would not be expected to have any close contact (e.g. tennis singles, individual running, etc.), athletes are not required to wear face coverings during the activity, although it is strongly encouraged (face coverings should still be worn at all times by individuals not engaged in the activity).
- Only the necessary number of adults to hold practices and competitions shall attend, including no more than 1 parent/guardian per youth athlete, so long as the venue allows for 6 ft of social distancing of spectators, who must maintain social distancing and wear face coverings throughout the activity. Adult club/recreational sports, with participants who are aged 21 years and older, shall not have spectators.
- League organizers and teams must cooperate with contact tracing efforts by state and local health officials. If league organizers and teams fail to cooperate, state or local health officials may discontinue a team or league's sports activities.

### WHAT IS PROHIBITED

- Participation in High Risk Sports (other than conditioning/non-contact skill building drills).
- Participation in any out-of-state team activities—practices (including conditioning), competitions, camps, clinics and tournaments by CT residents—or any interstate activities.
  - However, if an out-of-state resident is a member of a Connecticut team, then they can engage in that team's activities as allowed by these rules.
  - Furthermore, if a Connecticut resident is a member of an out-of-state team, then they can engage in that team's activities as allowed by these rules.
- Large, traditional multi-school/multi-team (more than two) sporting events.



# SPORTS, SPORTS CLUBS & COMPLEXES, GYMS, FITNESS CENTERS, & POOLS

## WHAT IS ALLOWED

- Practices for Moderate and Lower Risk sports, beginning no earlier than **January 19, 2021**. This includes group aerobic conditioning, sport-specific non-contact skill development drills, team practices and/or intra-squad scrimmages.
- In-state competition of interscholastic, club and recreation Moderate and Lower Risk sports, beginning no earlier than **February 1, 2021**, subject to the continued stability of COVID-19 metrics.
- Outdoor Recreation Activities as outlined on DECD's Sector Rules for Reopen webpage.
- School Physical Education Classes (follow CSDE guidance).

# SPORTS, SPORTS CLUBS & COMPLEXES, GYMS, FITNESS CENTERS, & POOLS

**TABLE 1:**

Risk Categorizations with Associated Sports, National Federation of State High School Associations, Sports Medicine Advisory Committee, May 2020

## HIGHER RISK

Sports that involve close, sustained contact between participants, lack of significant protective barriers, and high probability that respiratory particles will be transmitted between participants.

Wrestling	11-on-11 Football	Boys Lacrosse	Competitive Cheer
Martial Arts	Rugby	Boxing	Competitive Dance Teams

## MODERATE RISK

Sports that involve close, sustained contact, but with protective equipment in place that may reduce the likelihood of respiratory particle transmission between participants OR intermittent close contact OR group sports OR sports that use equipment that can't be cleaned between participants.

Basketball	Soccer	7-on-7 Football	Rowing/Crew (with two or more rowers in shell)
Volleyball	Water Polo	Girls Lacrosse	Tennis (doubles)
Baseball	Gymnastics	Pole Vault	Raquet Sports (squash, pickleball, racquetball)
Softball	Ice Hockey	High Jump	
Swimming Relays	Field Hockey	Long Jump	

## LOWER RISK

Sports that can be done with social distancing or individually with no sharing of equipment or the ability to clean the equipment between use by competitors.

Individual Running Events	Running/Cross Country (staggered starts)	Golf	Sideline Cheer
Throwing Events (javelin, shot put, discus)	Individual Swimming	Weightlifting	Rowing/Crew (single sculling)
		Alpine Skiing/ Snowboarding	Tennis (singles)
			Fencing

NOTE: Camps, per Executive Order No. 7PP, and Camps as defined in 19a-420 of the CT General Statutes, must follow Office of Early Childhood Guidance for camps. Other sports programs, including clinics that do not fall under Executive Order No. 7PP, Section 7 shall follow the guidelines issued by the Department of Public Health.

# SPORTS, SPORTS CLUBS & COMPLEXES, GYMS, FITNESS CENTERS, & POOLS



## SCREENING

Event organizers, staff, coaches, players, umpires/officials must conduct daily symptom assessments (self-evaluation).



## TRAVEL

Athletes are strongly recommended to travel to the venue alone or only with members of their immediate household, if possible. Face coverings are strongly recommended for individuals traveling to and from the venue, walking in and out of the venue, and while not actively participating.



## TEAM MEALS

Suspend post-activity group snack.



## SHARED EQUIPMENT

Ensure athletes do not share equipment to the most extent possible. If shared, clean and disinfect frequently.



## HYDRATION

All players and coaches shall bring their own water bottles. Water bottles shall not be shared.



## PRACTICE

Coaches should keep players in small groups at practice to allow for physical distancing.

- Ensure there is enough time between practices to prevent overlap of participants, and allow for time to clean and disinfect commonly used surfaces including, but not limited to:
  - Benches/dugouts
  - Door knobs/handles if indoors



## GAMES

Ensure there is enough time in-between games to prevent overlap of participants, and allow for time to clean and disinfect commonly used surfaces.

- Start times should be staggered where no more than half of the complex is changing over at any given time; games may end in a draw if time expires
- Consider adopting temporary rules to accommodate athlete safety



## GAME BALL(S)

Will be disinfected before and after every clinic, practice, and game.

# SPORTS, SPORTS CLUBS & COMPLEXES, GYMS, FITNESS CENTERS, & POOLS



## HUDDLES

Players will not huddle at any point during the game/practice. Sportsmanship will continue in a touchless manner – no handshakes/slaps/fist bumps after games.



## CONCESSION STANDS

Allowed to open but must follow Sector Rules for Restaurants.

- Sales of only prepackaged food and drink do not have to follow Sector Rules for Restaurants



## WATER FOUNTAINS

Players shall be required to bring their own water bottles. Water fountain use shall be restricted to water bottle filling stations only. Congregating at water bottle filling stations shall be limited and signage reinforcing the use of water bottle filling stations only must be displayed.



## DUGOUTS, BENCHES, & BLEACHERS

Are allowed to open only if they can be thoroughly cleaned before and after every use, and 6 ft of distance can be maintained.

## CROWD CONTROL

Staff should assist with crowd control by reminding spectators to maintain social distancing when queuing at the gate or other common areas. Spectator compliance with social distancing should be encouraged through periodic announcements or audio recordings.

- Individuals shall not congregate in common areas or parking lots following an event or practice. Strategies should be developed that will avoid large crowds at exits, such as dismissing crowds by section.

## PARENT SEATING AREA

Are allowed to open only if they can be thoroughly cleaned and disinfected before and after every use, and 6 ft of distance can be maintained.

# SPORTS, SPORTS CLUBS & COMPLEXES, GYMS, FITNESS CENTERS, & POOLS

## PERSONAL PROTECTION FOR EMPLOYEES

- All employees are required to wear a facemask or other cloth face covering that completely covers the nose and mouth. Employees that cannot wear a mask due to a medical condition must provide documentation to their employer.
- Employees may utilize their own cloth face covering over that provided by their employer if they choose.
- Gloves and eye protection are required when using cleaning chemicals.

## EMPLOYERS ARE RESPONSIBLE FOR PROVIDING PERSONAL PROTECTION TO THEIR EMPLOYEES

- If businesses do not have adequate personal protection, they cannot open.

## PERSONAL PROTECTION FOR CUSTOMERS

Customers are required to bring and wear facemasks or cloth face coverings that completely cover the nose and mouth. Customers must wear masks that completely cover the nose and mouth at all times.

- Businesses have the right to refuse service to an individual who is not wearing a mask.

## PERSONAL PROTECTION FOR CLASS INSTRUCTORS

Class instructors must wear a mask that completely covers the nose and mouth.

## PERSONAL PROTECTION FOR COACHES/STAFF/ATHLETES

Masks are required by all participants, spectators and coaches at any indoor or outdoor sports activity at all times, including active play. However, where the nature of play is such that two or more athletes would not be expected to have any close contact (e.g. tennis singles, individual running, etc.), athletes are not required to wear face coverings during the activity (face coverings should still be worn at all times by individuals not engaged in the activity).



## PERSONAL PROTECTION FOR SPECTATORS

Spectators are required to bring and wear a facemask or cloth face covering that completely covers the nose and mouth.



## POOL ACTIVITIES/AREAS

Cloth face coverings shall be worn throughout these facilities, with the exception of while swimming/showering/lounging. Cloth face coverings can be difficult to breathe through when they're wet.

# SPORTS, SPORTS CLUBS & COMPLEXES, GYMS, FITNESS CENTERS, & POOLS



## HAND SANITIZER

Hand sanitizer shall be made available at entrance points and common areas, where possible.



## HANDWASHING

Ensure employees wash their hands routinely using soap and water for at least 20 seconds.



## INTRADAY CLEANING

Employees shall clean all equipment frequently, and customers must wipe down equipment after each use. This includes free weights.



## CLEANING, DISINFECTANT PRODUCTS, &/OR DISPOSABLE DISINFECTANT WIPES

Make available near commonly used surfaces, where possible, e.g.:

- Machinery and equipment
- Free weights
- Bathrooms



## BATHROOMS

Clean and disinfect frequently, and implement use of cleaning log for tracking. Clean multiple times a day and hourly during busy times.

- Recommend posting signage encouraging reduced capacity in bathrooms, and reminding individuals to wash their hands and wear a mask
- Consider placing a wastebasket outside of the bathroom

# SPORTS, SPORTS CLUBS & COMPLEXES, GYMS, FITNESS CENTERS, & POOLS



## INTRADAY CLEANING

Employees shall clean all equipment frequently, and customers must wipe down equipment after each use. This includes free weights.



## CLEANING & DISINFECTING

Businesses shall follow federal guidelines (CDC, EPA) on what specific products shall be used and how.

- Use products that meet EPA's criteria for use against SARS-CoV-2 and that are appropriate for the surface. Prior to wiping the surface, allow the disinfectant to sit for the necessary contact time recommended by the manufacturer. Train staff on proper cleaning procedures to ensure safe and correct application of disinfectants.
- Disinfectants are irritants and sensitizers, and should be used cautiously.
- Avoid all food contact surfaces when using disinfectants; these surfaces should be sanitized instead.
- Clean and disinfect common areas, high transit areas, and frequently touched surfaces on an ongoing basis (at least daily) and more frequently if used more often. Clean and disinfect shared objects after each use. Examples include:
  - Entrances and exits
  - Payment devices (e.g. PIN pad)
  - Water bottle refill stations

# SPORTS, SPORTS CLUBS & COMPLEXES, GYMS, FITNESS CENTERS, & POOLS



## DAILY HEALTH CHECK

Ask employees resuming on-premise work to confirm they have not experienced COVID-19 CDC-defined symptoms and to monitor their own symptoms, including cough, shortness of breath, or any two of the following symptoms:

- Fever
- Chills
- Repeated shaking with chills
- Muscle pain
- Headache
- Sore throat
- New loss of taste or smell
- Congestion or runny nose
- Nausea or vomiting
- Diarrhea
- Fatigue

Employees should stay home if sick.



## IN THE EVENT OF A POSITIVE COVID-19 CASE

Employees shall inform their employers, and follow state testing and contact tracing protocols. In addition:

- Employee should contact local public health to initiate contact tracing.
- Recommend 24-hour passive decontamination in the event of a positive case, and follow CDC guidelines for cleaning and disinfecting.
- Additional information can be accessed at:

<https://www.cdc.gov/coronavirus/2019-ncov/community/general-business-faq.html>



## LEAVE

Employers shall adhere to federal guidance pertaining to paid leave for employees and provide this guidance to employees. Employers shall post the Families First Coronavirus Response Act (FFCRA) Department of Labor poster. The poster can be accessed at: <https://www.dol.gov/agencies/whd/posters>

- Additional guidance can be accessed at: <https://www.dol.gov/agencies/whd/pandemic/ffcra-employee-paid-leave>



## WHISTLEBLOWER PROTECTION

Employers may not retaliate against workers for raising concerns about COVID-19 related safety and health conditions.

- Additional information for the public sector can be accessed at [www.connosha.com](http://www.connosha.com)
- Additional information can be accessed at [www.whistleblowers.gov](http://www.whistleblowers.gov)