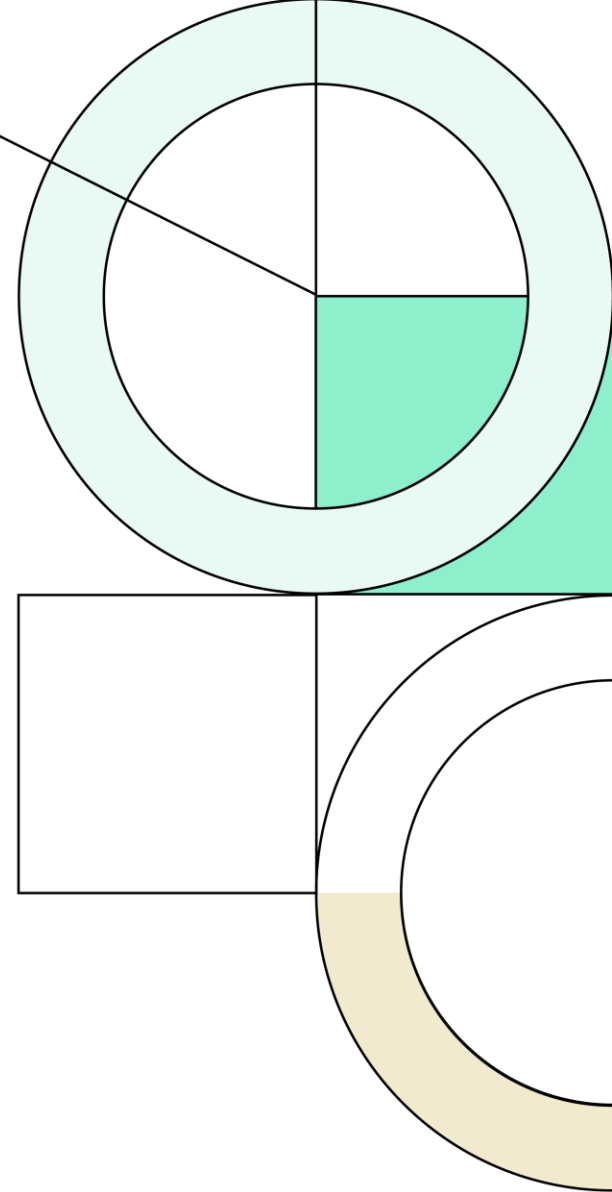




Ector County Independent School District

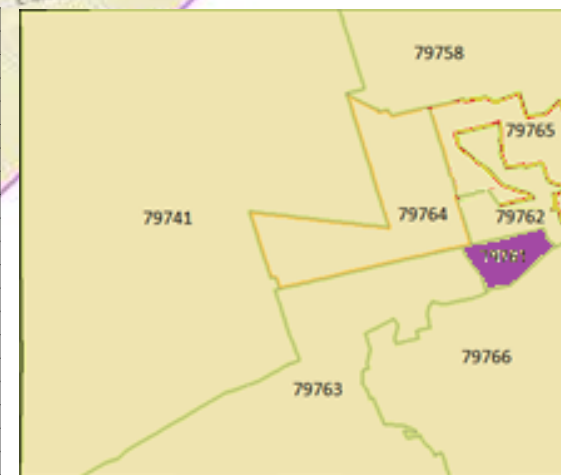
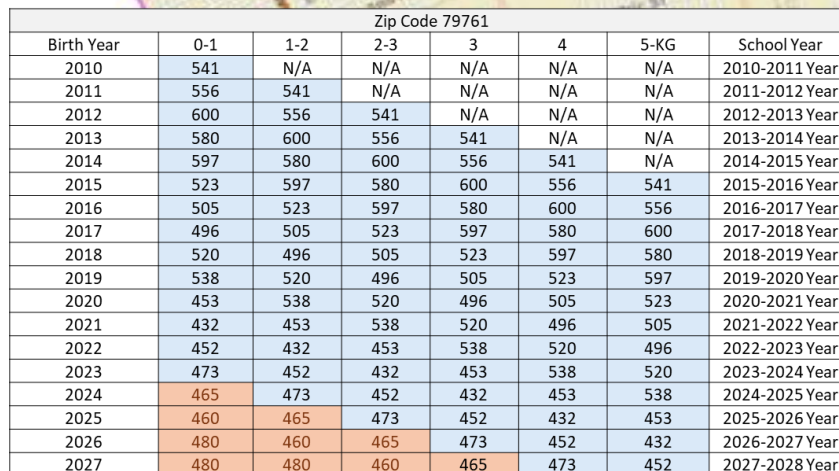
Pre-Kindergarten Program Boundary Proposals

March 18th, 2025





Account for School Choice Enrollment Trends
to identify how many students to deduct from
projected attendance zones to finalize
enrollment estimates by zone –





Pre-Kindergarten 3 Program Boundary Planning

Formalize Pre-Kindergarten 3 Zones for the following Early Childhood learning facilities –

Burleson Early
Education Center

Odessa YMCA
Learning Center

Pre-Kindergarten 3 Programming will also be accommodated at the following campuses –

- Austin Elementary Choice Campus
- Carver Early Education Center – Early Education Special Education Programs
- Lamar Early Education Center – Early Education Special Education Programs



Pre-Kindergarten 3 – Proposed Attendance Zone –

Pre-K 3

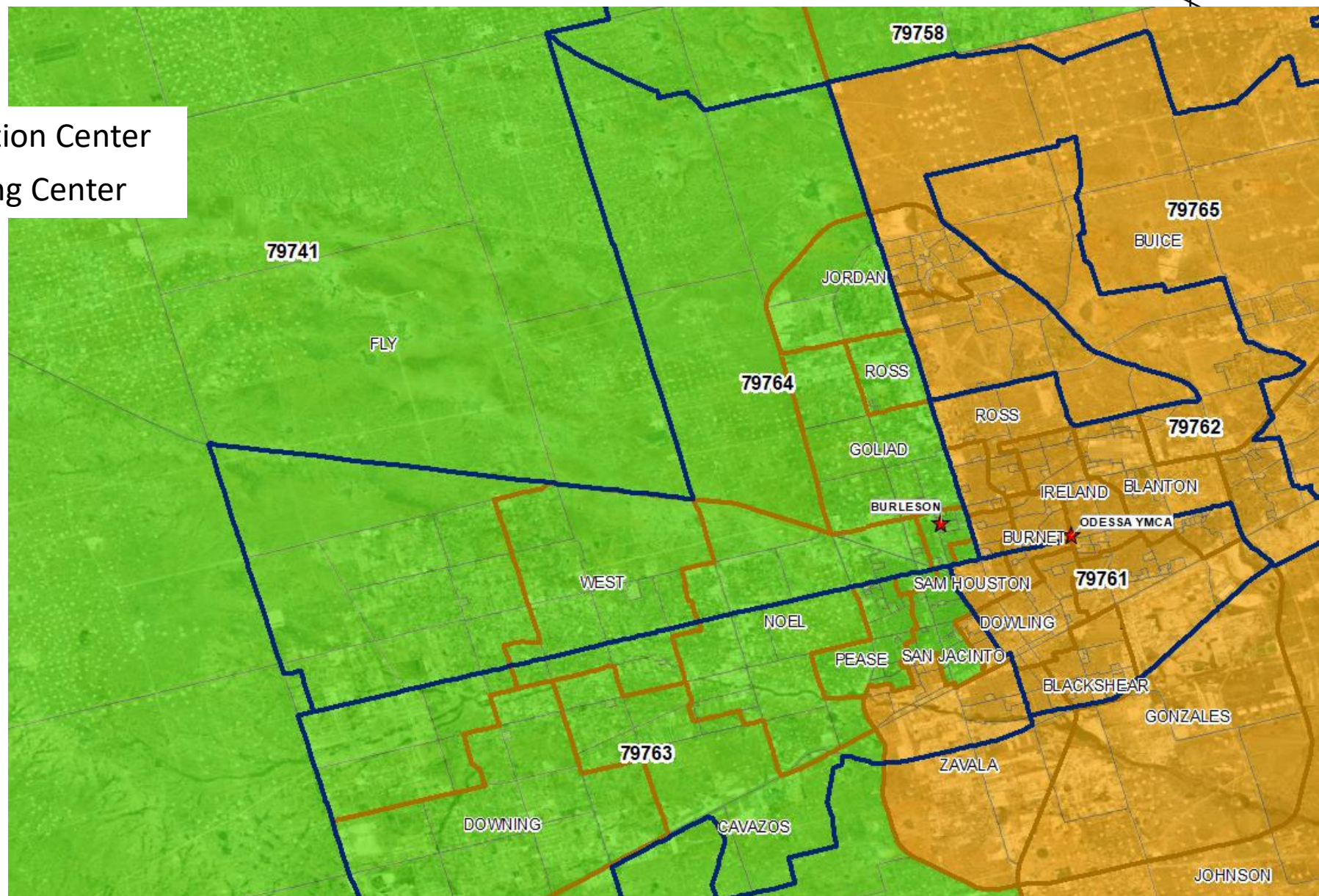


- Burleson Early Education Center



- Odessa YMCA Learning Center

All of Zip Codes 79761,
79762, & 79765 are in the
Odessa YMCA Pre-K 3 Zone





Three Year Pre-Kindergarten Enrollment Forecast by Zip Code by Campus Attendance Zone

Pre-Kindergarten 3 Proposed Attendance Zone –

2025-2026

Campus		Zip Code	Zip Code	Zip Code	Zip Code	Zip Code	Zip Code	Zip Code	Zip Code	All Zip Codes	% of Births	Participation
		79741	79758	79761	79762	79763	79764	79765	79766	TOTAL	In Pre-K3	20.5% Numbers
		Pre-K 3	Pre-K 3	Pre-K 3	Pre-K 3	Pre-K 3	Pre-K 3	Pre-K 3	Pre-K 3	Pre-K 3	Zones	Pre-K 3
Burleson Early Education Center		11	45	0	0	594	465	0	0	1115	36.5%	229
Odessa YMCA Learning Center		0	0	452	640	107	0	553	189	1941	63.5%	398
Total		11	45	452	640	701	465	553	189	3,056	100.0%	626

2026-2027

Campus		Zip Code	Zip Code	Zip Code	Zip Code	Zip Code	Zip Code	Zip Code	Zip Code	All Zip Codes	% of Births	Participation
		79741	79758	79761	79762	79763	79764	79765	79765	TOTAL	In Pre-K3	20.5% Numbers
		Pre-K 3	Pre-K 3	Pre-K 3	Pre-K 3	Pre-K 3	Pre-K 3	Pre-K 3	Pre-K 3	Pre-K 3	Zones	Pre-K 3
Burleson Early Education Center		0	40	0	0	561	459	0	0	1060	34.7%	217
Odessa YMCA Learning Center		0	0	473	670	101	0	562	186	1992	65.3%	408
Total		0	40	473	670	662	459	562	186	3,052	100.0%	626

2027-2028

Campus		Zip Code	Zip Code	Zip Code	Zip Code	Zip Code	Zip Code	Zip Code	Zip Code	All Zip Codes	% of Births	Participation
		79741	79758	79761	79762	79763	79764	79765	79765	TOTAL	In Pre-K3	20.5% Numbers
		Pre-K 3	Pre-K 3	Pre-K 3	Pre-K 3	Pre-K 3	Pre-K 3	Pre-K 3	Pre-K 3	Pre-K 3	Zones	Pre-K 3
Burleson Early Education Center		5	40	0	0	567	450	0	0	1062	35.7%	218
Odessa YMCA Learning Center		0	0	465	655	103	0	515	175	1913	64.3%	392
Total		5	40	465	655	670	450	515	175	2,975	100.0%	610

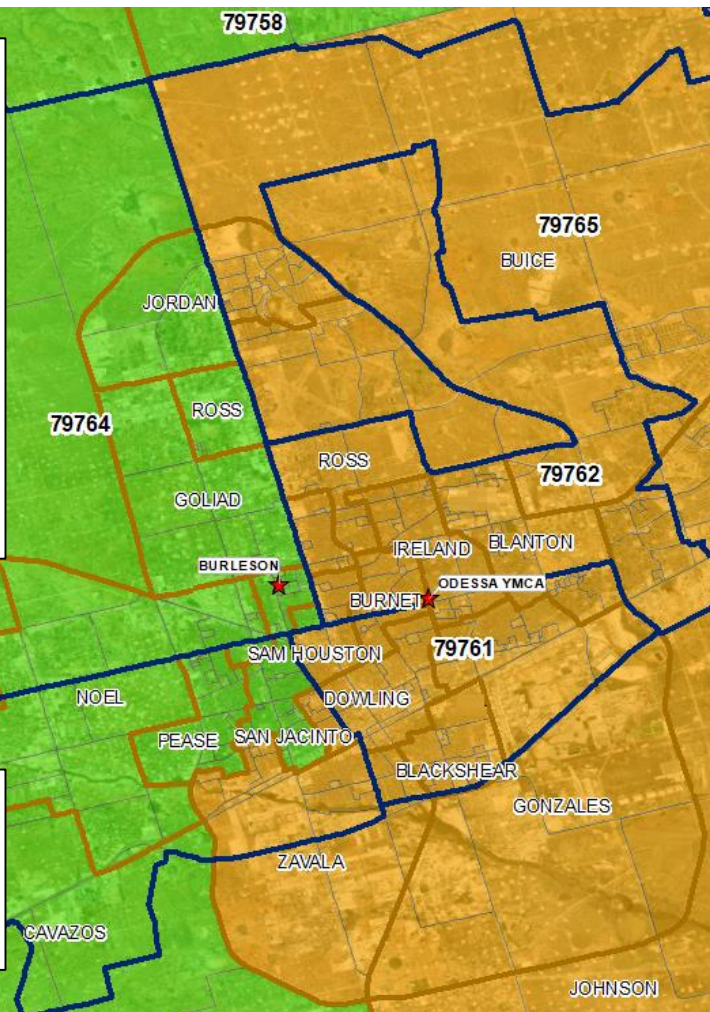


Three Year Pre-Kindergarten Enrollment Forecast by Zip Code by Campus Attendance Zone

Pre-Kindergarten 3 Proposed Attendance Zone –

- To account for the future School Choice numbers that could attend the Austin Elementary Campus we evaluated the elementary home campus zones for the last 4 grade groups (Pre-K – 2nd Grade) that are currently attending Austin Elementary.
- We propose to subtract the following anticipated enrollment at each of the following Early Learning Campuses -
 - Odessa YMCA Learning Center Zone – 35 Students
 - Burleson Early Education Center Zone – 33 Students

Anticipated numbers at Burleson EEC & available capacity next year allows the District to accommodate a percentage of sibling transfers into the new campus.



Pre-Kindergarten 3 Enrollment Goal -	
Planning Model 2 -	
Odessa YMCA Learning Center	300
Burleson Early Education Center	176
Austin Elementary	68
Lamar Early Education Center	44
Carver Early Education Center	44
Total	632

Burleson Early Education Center Campus	Students
20.5% Participation Total - Burleson	229
- Minus Students Attending Austin	-33
- Minus Students Attending Lamar	-22
- Minus Students Attending Carver	-22
Burleson EEC Total	152

Odessa YMCA Learning Center	Students
20.5% Participation Total - Odessa YMCA	398
- Minus Students Attending Austin	-35
- Minus Students Attending Lamar	-22
- Minus Students Attending Carver	-22
Odessa YMCA LC Total	319

Pre-Kindergarten - Proposed Model 2 -	Students
Odessa YMCA Learning Center	319
Burleson Early Education Center	152
Austin Elementary	68
Lamar Early Education Center	44
Carver Early Education Center	44
Pre-Kindergarten Planning Model 2 Total	627



Pre-Kindergarten 4 Program Boundary Planning



Pre-Kindergarten 4 Program Boundary Planning –

2025-26
School
Year

EARLY EDUCATION CENTER FACILITIES

Burleson Early Education Center	
Burleson ES	54
E.K. Downing ES	78
Goliad ES	54
San Jacinto ES	57
West ES	74
Total Existing Pre-K4	317

Carver Early Education Center	
Blackshear ES	86
Dowling ES	55
Ireland ES	91
Johnson ES	88
Sam Houston ES	44
Total Existing Pre-K4	364

Lamar Early Education Center	
Buice ES	115
Burnet ES	63
Gonzales ES	30
Jordan ES	109
Zavala ES	64
Total Existing Pre-K4	381

INDIVIDUAL SCHOOLS TO MAINTAIN PRE-KINDERGARTEN 4 PROGRAMS

INDIVIDUAL SCHOOL	
Blanton ES	58
Capacity (85%)	517
Current Enrollment	502

INDIVIDUAL SCHOOL	
Cavazos ES	41
Capacity (85%)	819
Current Enrollment	615

INDIVIDUAL SCHOOL	
Fly ES	91
Capacity (85%)	712
Current Enrollment	1,102

INDIVIDUAL SCHOOL	
Noel ES	87
Capacity (85%)	643
Current Enrollment	494

INDIVIDUAL SCHOOL	
Pease ES	98
Capacity (85%)	682
Current Enrollment	628

INDIVIDUAL SCHOOL	
Ross ES	56
Capacity (85%)	517
Current Enrollment	501

SCHOOLS OF CHOICE PRE-KINDERGARTEN 4 PROGRAMS

CHOICE SCHOOL	
Alamo ES	44

CHOICE SCHOOL	
Austin ES	72

CHOICE SCHOOL	
Cameron ES	70

CHOICE SCHOOL	
Hays ES	66

CHOICE SCHOOL	
Milam ES	75

CHOICE SCHOOL	
Pease ES	98

CHOICE SCHOOL	
Reagan ES	62

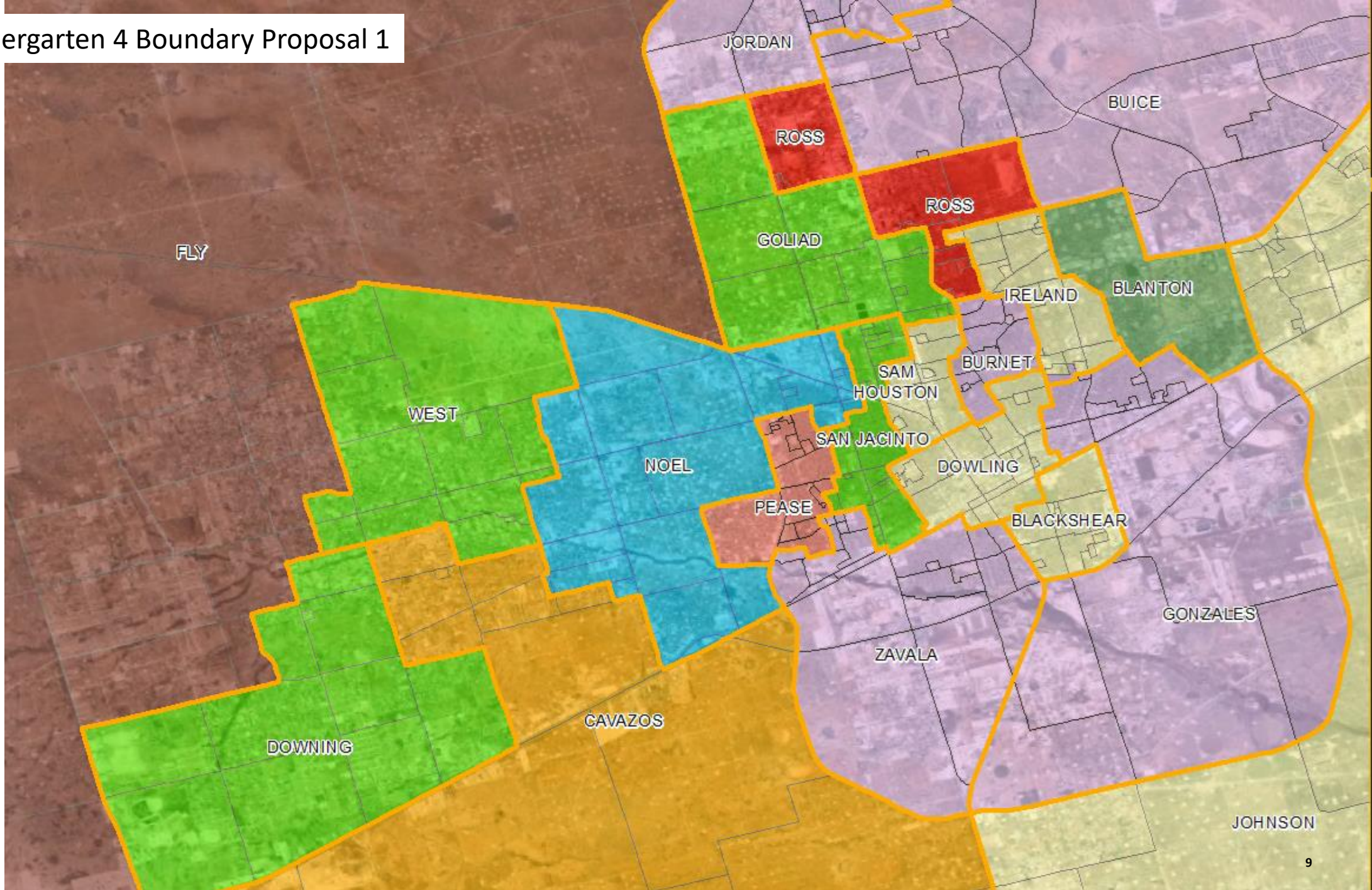


Pre-Kindergarten 4 Boundary Proposal 1

Pre-K 4

- Blanton
- Burleson
- Cavazos
- Carver
- Fly
- Lamar
- Noel
- Pease
- Ross

2025-26
School
Year





Pre-Kindergarten 4 Program Boundary Planning –

2025-2026 School Year

Campus		Zip Code	Zip Code	Zip Code	Zip Code	Zip Code	Zip Code	Zip Code	Zip Code	All Zip Codes	Participation	Adjustment	Proj. Boundary
		79741	79758	79761	79762	79763	79764	79765	79766	TOTAL	48.5% Numbers	To Enrollment	Enrollment
		Pre-K 4	Pre-K 4	Pre-K 4	Pre-K 4	Pre-K 4	Pre-K 4	Pre-K 4	Pre-K 4	Pre-K 4	Pre-K 4	for Choice Schools	Estimate
Burleson Early Education Center					58	212	198			468	227	75	152
Carver Early Education Center				238	213	14	9	40	60	574	278	94	184
Lamar Early Education Center			57	151	66	90	13	381	31	789	383	114	269
Blanton Elementary School				43	106					149	72	19	53
Cavazos Elementary School						72			79	151	73	25	48
Fly Elementary School		0				119	155			274	133	17	116
Noel Elementary School						53	60			113	55	48	7
Pease Elementary School						119				119	58	19	39
Ross Elementary School					122		17			139	67	20	47
Out of District								18	4	22	11	0	11
Total		0	57	432	566	678	451	440	174	2,798	1,357	431	926

- To account for the anticipated student numbers that could attend the District's Choice Elementary campuses we evaluated the elementary home campus zones for the last 4 grade groups (Pre-K – 2nd Grade) that are currently attending those Choice schools.



Questions?