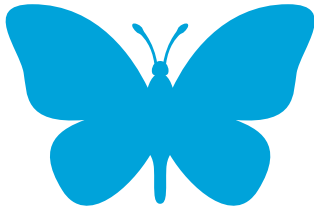


PCOP

EARLY CHILDHOOD
LEARNING CENTER

HI-SET



ĀISSPOŌMMOŌTSIIYŌ•P

PARENT COMMUNITY OUTREACH PROGRAM

BPS Early Childhood Learning Center



The month of May has already been a fun-filled rollercoaster of a ride! We temporarily blended our infant/toddler rooms due to low enrollment at the beginning of the month. The majority of parents initially interested in childcare opted to wait to enroll until Fall 2021 (for various reasons). There is still plenty of fun & learning to be had by our small (but busy!) group of children.

We are excited to welcome aboard our new Early Childhood Assistant Teacher in the Infant Room, Hailey Bullshoe! She is settling in to our routines quickly and has already completed her child care orientation series of trainings.

Family Connections awarded our center several grants that have allowed us to expand our curriculum and improve on our learning spaces.

The children are also enjoying the sporadic spring weather that allows them to get outside and run around. When the weather isn't so great, they are also enjoying their new indoor play space.



Big Room Play Space

Our #12 spot roster currently consists of :

- Teen parents (#0)
- Staff (#4)
- New staff (#1)
- Open (#2 infant spots; #5 toddler spots)
- Spring 2021 Waitlist (#0 staff)

It took us a bit longer than usual, but we were finally able to complete all of our licensing requirements/paperwork/etc so we are good through the end of November 2021!

*Congratulations to
our BCC Early
Childhood
Development
Graduates!*



Hailey Bullshoe, BPS
Early Childhood
Assistant Teacher,
Infants



Monica Kipling, BPS Early
Childhood Lead Teacher,
Toddlers

Teen Parent Resource Center

In May, we celebrated and honored our pregnant and parenting teen moms for Mother's Day. Through partnerships with the Blackfeet Pregnant and Parenting Teen Coalition, Hopa Mountain Story Maker's program, Columbia Falls' Lutheran Church, donations by several individuals, and time donated by Sue Cox (West Glacier), we were able to giveaway #21 gift baskets to our teen moms. These gift baskets included baby clothes, diapers, wipes, children's books, PPE, hygiene and pampering items for the moms, and a food box for the family.



Teen Moms' gift basket

HI-SET & Adult Basic Education

Update provided by Jerelyn Gobert, HI-SET tutor

Attendance Update:

May 2021 Total Enrollment: #65

| | |
|---|---|
| New Students (self/ community referrals) | 2 |
| New Students (BHS referrals) | 0 |
| | |

| | |
|------------------------|----|
| Relocating out of town | 3 |
| Returning to BHS/WBHA | 2 |
| Actively Participating | 18 |
| In-active | 42 |

During this month I have had two clients return to BHS and are graduating. I have had three clients move out of town, and have had four more clients become active. I have two clients getting ready to test for their HiSET at BCC. This month I have noticed more people from the community, and referrals from the high school and Academy, take their education to the next level and want to earn their HiSET certificate. Having BCC administering the HiSET test has been a benefit to our program due to clients' lack of transportation to distant test centers, and the lack of technological apparatuses available to take the test at home. Covid has really impacted the social and emotional mindset that I am noticing in our clients, and getting them to come back and participate in our program is a definite plus for us. Slowly, but surely, we are finding people are regaining their trust to get out there and continue to do a little for themselves and that would be working on their HiSET.

āisspoōmmoōtsiiyō•p

McKinney Vento Data update:
Currently, we have identified #239 students as experiencing homelessness.

School-based Clothing Closets

As the school year winds down, and summer school gears up, we want to remind everyone that there are some summer clothes available in the school-based clothing closets. We are gathering items now for a distribution to the families we serve. We are hoping to reach out to grandparents raising grandchildren to provide summer clothing.

School-based Food Pantry

During the previous month, we have provided emergency food boxes to several individual students, as well as a few families. It is very convenient to have a food pantry on-site as we are able to meet these requests immediately.

Foster Care Liaison

As the Foster Care liaison for our district, I must admit that this is our “weakest link” within the PCOP programs. We are striving to improve this by networking with Blackfeet Family Services. We recently started attending their CPT meetings in an effort to improve communication. We also hope to establish an MOU with Blackfeet Family Services to be able to exchange information and be notified of which students are actively being served in Foster Care, as well as those students who are in emergency placements or kinship care.

Grandparents Raising Grandchildren

We are currently trying to identify Grandparents Raising Grandchildren (GRG) within our district. We estimate that at least 25% of students enrolled in BPS are being raised by grandparents but are seeking ways to confirm this estimate. We have recently partnered with the Montana Kinship Navigation Program through MSU-Bozeman as a means to provide more support and resources to our GRG.

BPS YHDP

Our BPS Youth Homelessness Demonstration Project (YHDP) Youth Case Manager, Irene Augare, is now providing supportive services to #22 unaccompanied homeless youth. These services include:

- Securing housing* for one youth; with a second pending; the housed youth is also now employed and preparing to enroll in school

* The youth that was successfully placed in secure housing was housed out of district due to the fact that we still do not have our Host Homes in place. Our community currently does not provide a safe, secure, and supportive option for unaccompanied homeless youth to be able to remain residing here and attending BPS. We hope that we can change this narrative with our Host Home model.

- Assistance with filing taxes
- Assistance with applying for SNAP
- Providing youth with a cell phone to remain in contact with school and YHDP
- Providing other basic needs (ie. Food, hygiene, clothing)

The Host Home portion of the YHDP grant is still on hold pending legal review and a conversation regarding liability insurance. In the meantime, we will continue to provide Supportive Services to our unaccompanied homeless youth, and assist with their transitions as needed.