



COMPREHENSIVE HIGH SCHOOL #4

DESIGN DEVELOPMENT PRESENTATION. JANUARY 21, 2014



Paul Andress, Director of Operations

Robert Bostic, Assistant Superintendent for Academic Programs

David Hicks, Executive Director of Secondary Programs

Glen Martin, Construction Coordinator

Mike Mattingly, Assistant Superintendent for Curriculum

Debbie Monschke, Assistant Superintendent for Administrative Services

Ernie Stripling, Technology Information Officer

COMMUNICATION

Sharing thoughts, questions, ideas and solutions

COLLABORATION

Working together to reach a goal – putting talent, expertise, and smarts to work

CREATIVITY

Trying new approaches to get things done equals innovation and invention

CRITICAL THINKING

Looking at problems in a new way linking learning across subjects and disciplines

ARCHITECTURAL FEATURES

'Academic House' Concept
Open and Transparent Collaborative Spaces
Large Windows into Learning Spaces
Indoor/Outdoor Space with Flexible Walls
Robust Wireless Access and Generous Technology Integration
Architectural Connections Among Primary Building Components
Mobile Furniture and Book Stacks
Student/Teacher Conference Spaces
Prominent Library/Lecture Hall Location with Public Access
Strategic Incorporation of Natural Light
Adaptable/Flexible Classroom Spaces
Access control
Large Classrooms
Art Displays in Corridors
Departmental Storage Rooms
First-class Athletic Practice Facilities
Multiple Points of Sale in Cafeteria to Accommodate Large Groups
Common Hallway Printers
Work Environment Functionality
Work Partnerships - Spaces Accessible to Public
Modular Meeting Areas - Maker/Creation Spaces
Unique Furnishings
Classroom Digital Signage for Teacher Messages
RFID or Tapping Technology
Secure Marketplace Incorporation
Timeless Design
Durable Finishes

SITE ORGANIZATION FEATURES

Student Parking Adjacent to Fine Arts and Athletics
Separate Parent, Student, and Bus Traffic
Prominent Main Entrance
Limited and Secure Public Access
Convenient Parking

FUTURE 9TH GRADE FEATURES

Direct Connection Between Comprehensive HS and 9th GC
Shared Support Spaces: Library, Fine Arts, Kitchen, Athletics

COMMUNITY-USE FEATURES

Prominent Entrances
Sound Control to Allow Multiple Activities At One Time
Controlled Access
Community-use Facilities

ADMINISTRATION FEATURE

General Administration and Counseling Areas
Decentralized Vice Principal and Counseling

SAFETY FEATURES

- Lockdown and Weather-safe
- Indoor/Outdoor Camera Surveillance
- Secure Vestibule
- Card Access
- RFD Door Monitors
- Strategic Stair Landing Placement

OUTDOOR LEARNING ENVIRONMENT FEATURES

- Low-maintenance/Low Water Use
- Amphitheater As a Learning Tool and Performance Space
- Context-sensitive

TEACHER-BASED FEATURES

- Maker/Creation Spaces Throughout School
- Teacher Commons in Each Academic House

LIBRARY FEATURES

- After-hours Access for Testing and Virtual Coursework
- Access to Information - Print and Electronic
- Ample Charging Stations
- Restrooms and External Access
- Ample E-Book Access
- General Access Space for Computers and Virtual instruction
- Extend Library Borders

AFTER-HOURS ACCESS FEATURES

- Lecture Hall, Athletics, Library, Fine Arts, Art Galleries, Food Service

OUT-OF-DISTRICT/CATE FEATURES

- Partnerships for Shared Space/Instruction with Universities
- Publicize Student Performance and Achievement
- Business Partnerships to Create Jobs for Graduating Students (Fed Ex, Cosmetology, Trades, Coffee Bar)

CONTEXT-SENSITIVE FEATURES

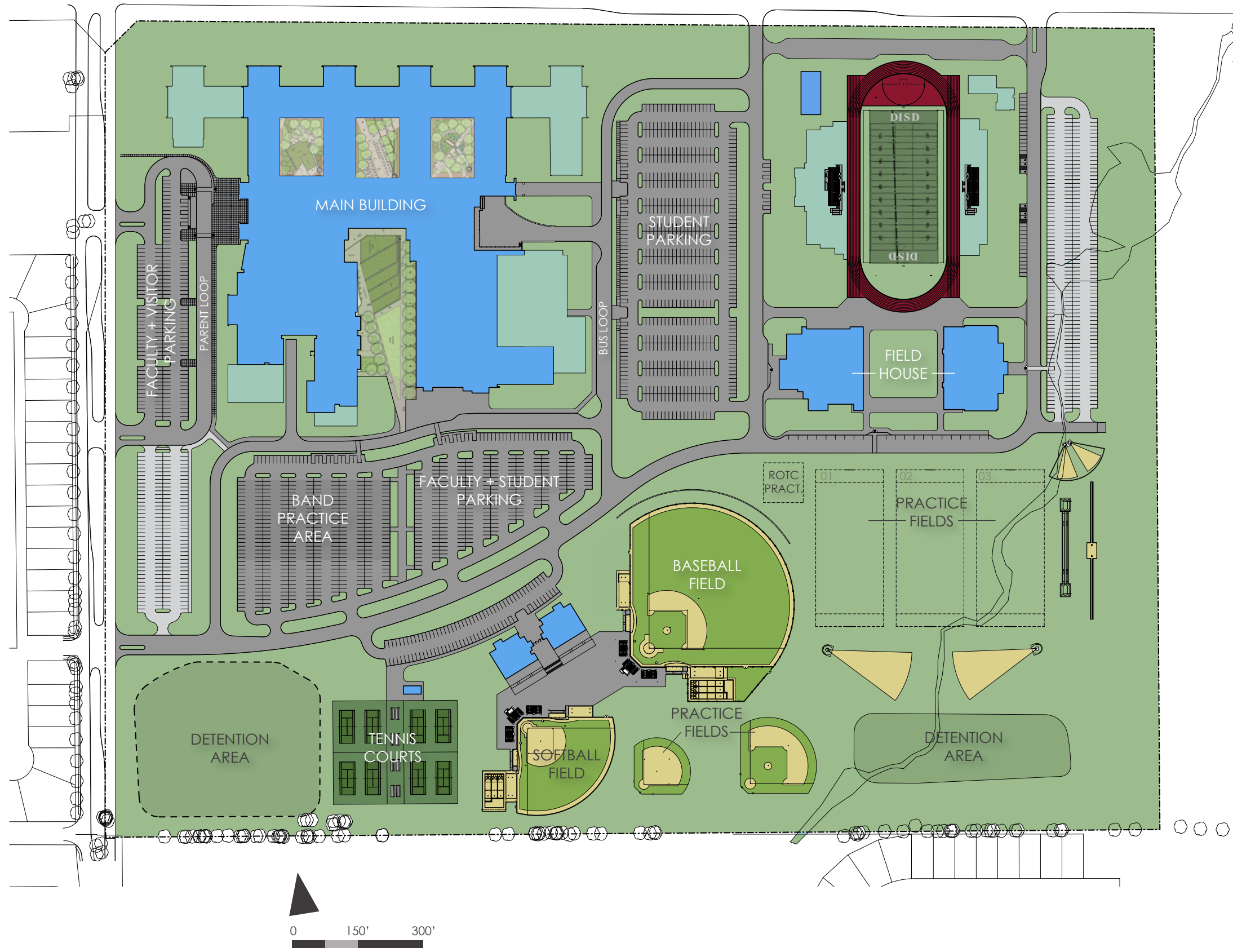
- Fits In With Neighborhood/Community
- Cost effective
- Forward-thinking Curriculum and Architectural Aesthetic
- Cutting-edge, Yet Equitable

STUDENT OWNERSHIP FEATURES

- Banners, Student Display, Student-centric Collaboration
- Student Store

- 01 Rainwater Collection System
- 02 Condensate Water Collection System
- 03 Bioswales
- 04 Ground Source Heat Pump HVAC (Geothermal)
- 05 Ground Source Heat Pump Water Heating
- 06 Infrastructure for Future Solar Photovoltaics
- 07 Building Orientation and Fenestration
- 08 Additional Wall/Roof Insulation
- 09 Continuous Insulation on All Walls
- 10 Cool Roofs
- 11 Double-pane Insulated Glazing with Low-E Coating
- 12 Daylighting in Classroom Spaces
- 13 High-efficiency Lighting - LED Fixtures
- 14 Regional Materials: Brick (Denton Acme Plant), CMU, Steel, Gypsum
- 15 Recycled Materials: Steel, Concrete, Ceiling Tile
- 16 Low VOC Materials: Paint, Sealant, Carpet
- 17 Indoor Air Quality
- 18 Construction Indoor Air Quality
- 19 Low-flow Plumbing Fixtures
- 20 Native Plants and Drought-tolerant Landscaping
- 21 Recycle Construction Material to Reduce Waste
- 22 Campus Recycling Program
- 23 Food Service: Equipment Implementing Condensate and/or Steam Reclamation
- 24 Food Service: On-demand Defrost for Remote Refrigeration Systems
- 25 Food Service: Faster Cooking Equipment
- 26 Durable, Low-maintenance Finishes: Polished Concrete
- 27 Low-emitting, Fuel-efficient Vehicle Preferred Parking
- 28 Commuter Bicycle Storage and Changing Rooms
- 29 Rain Garden
- 30 Joint-use Facility
- 31 Light Pollution Reduction
- 32 School As A Teaching Tool
- 33 Energy Efficiency Optimization
- 34 Refrigerant Management
- 35 Lighting Occupancy Sensors
- 36 Variable Speed Exhaust for Kitchen Hoods
- 37 Carbon Dioxide Sensors for Demand Controlled Ventilation
- 38 EMS Control of All Exterior Lighting
- 39 EMS Control of Re-circulation Pumps on Domestic HW Systems
- 40 Contactors for EWCs to Shut Off After Hours
- 41 Vending Machine Energy Savers
- 42 Energy Star Appliances
- 43 Mold Prevention Materials
- 44 Water Well for Irrigation
- 45 Low-impact Storm Water Design
- 46 LEED Professional on Project Team
- 47 Heat Island Effect - White Concrete
- 48 Investigate Green Power Availability
- 49 Tighter Thermal Design to Increase Occupant Comfort
- 50 Construction Activity Pollution Prevention
- 51 Refined Acoustics in Learning Spaces
- 52 Environmental Tobacco Smoke Control





LEGEND

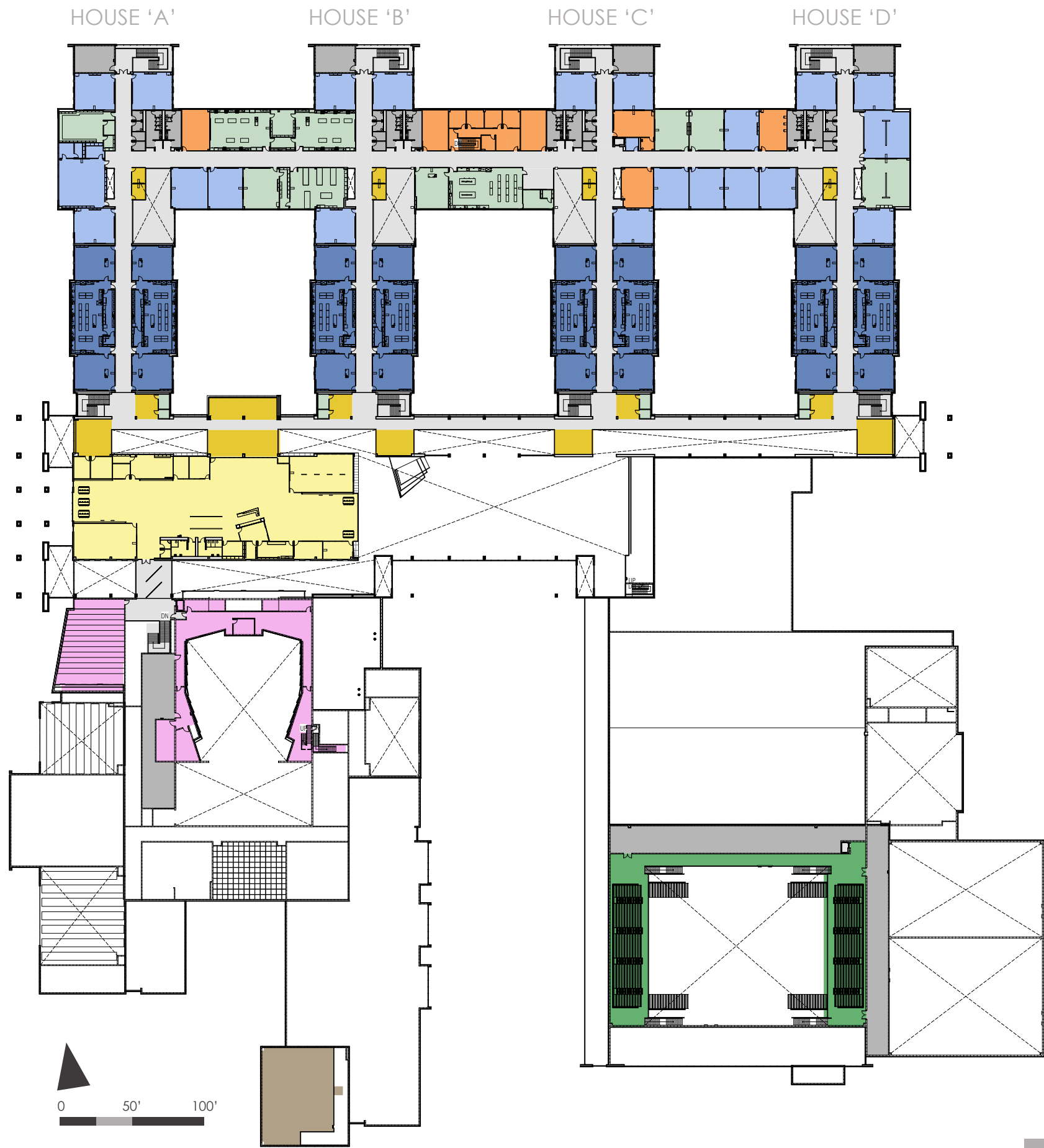
- Future Building
- Future Parking

SITE PLAN



LEGEND

- Classroom
- Collaborative Area
- Science Lab
- Special Education
- Technology
- Library
- Athletics
- Administration
- Fine Arts
- Agricultural Science
- Food Services
- Service
- Circulation



HOUSE 'A'

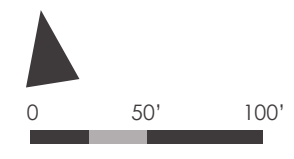
HOUSE 'B'

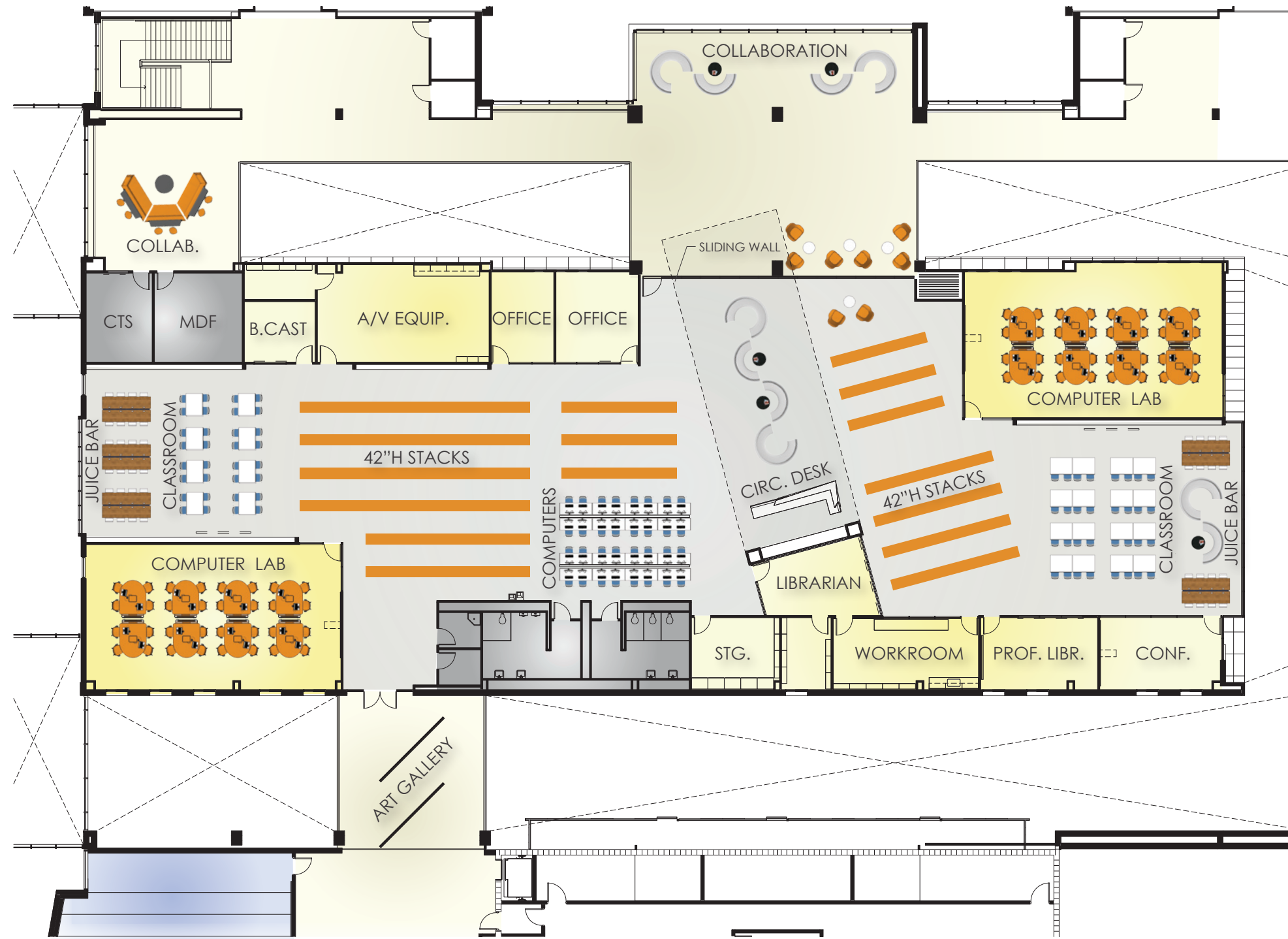
HOUSE 'C'

HOUSE 'D'

LEGEND

- Classroom
- Collaborative Area
- Science Lab
- Special Education
- Technology
- Library
- Athletics
- Administration
- Fine Arts
- Agricultural Science
- Food Services
- Service
- Circulation

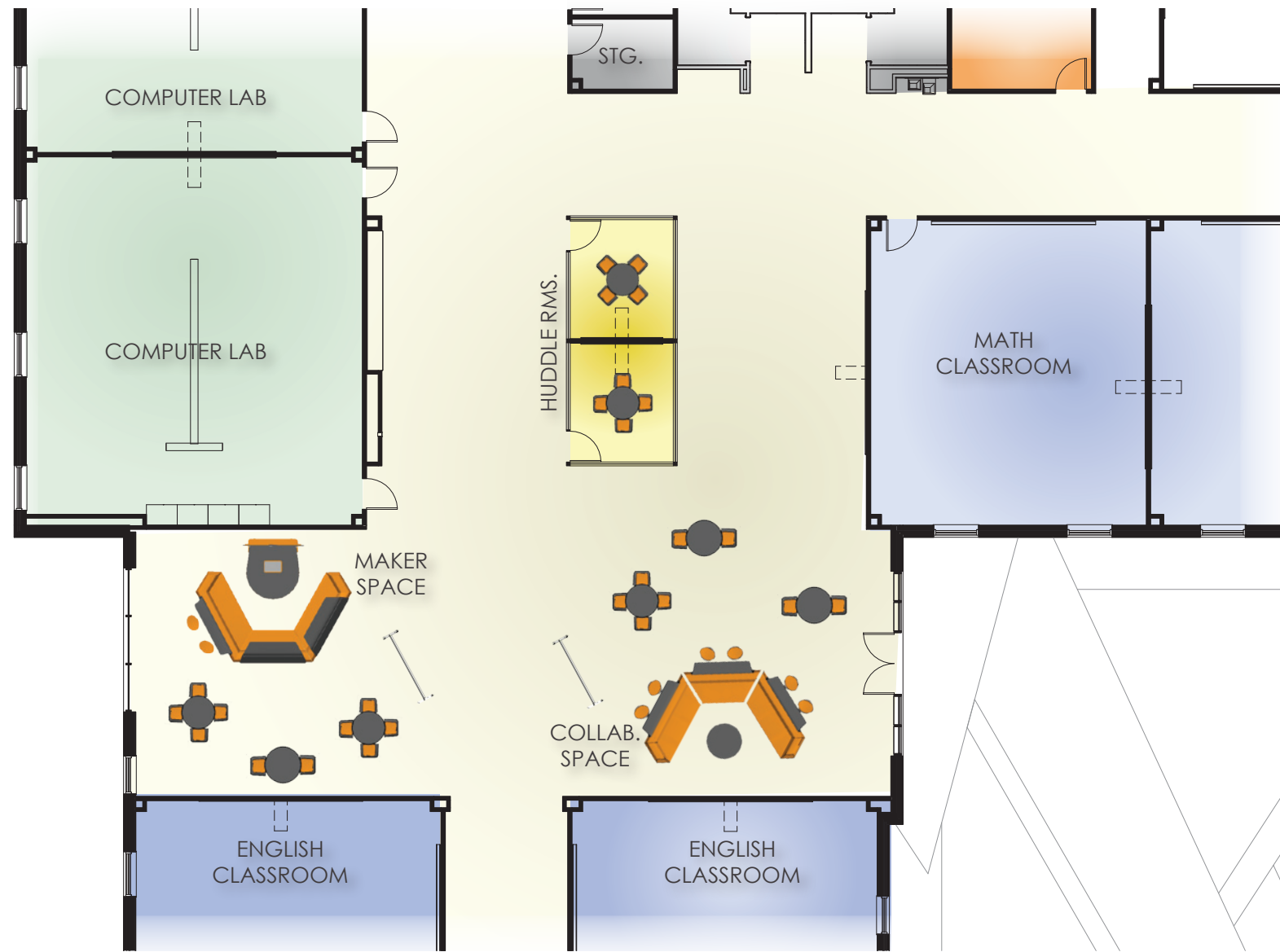




LEGEND

- Classroom
- Collaborative Area
- Science Lab
- Special Education
- Technology
- Library
- Athletics
- Administration
- Fine Arts
- Agricultural Science
- Food Services
- Service
- Circulation

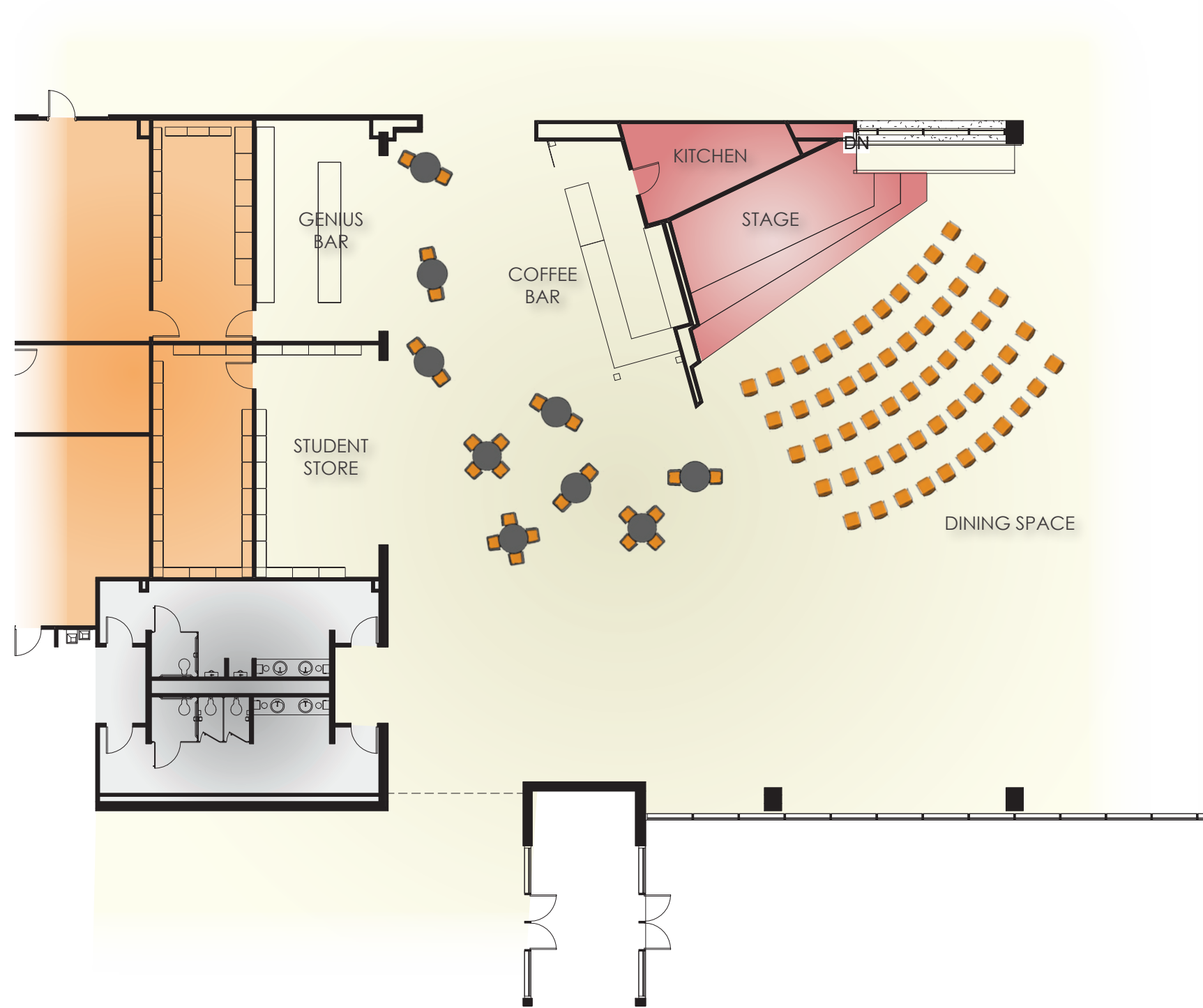




LEGEND

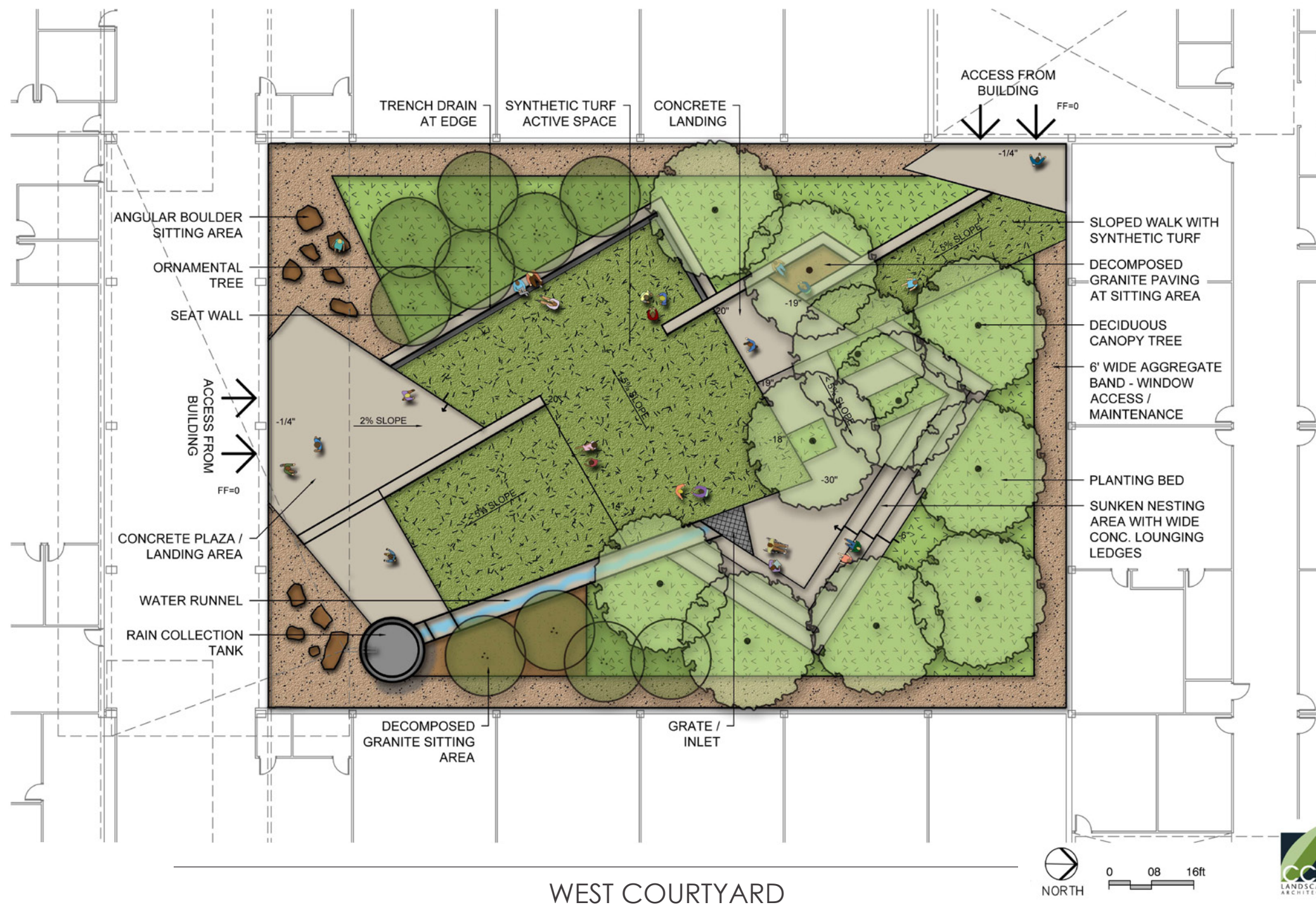
- Classroom
- Collaborative Area
- Science Lab
- Special Education
- Technology
- Library
- Athletics
- Administration
- Fine Arts
- Agricultural Science
- Food Services
- Service
- Circulation

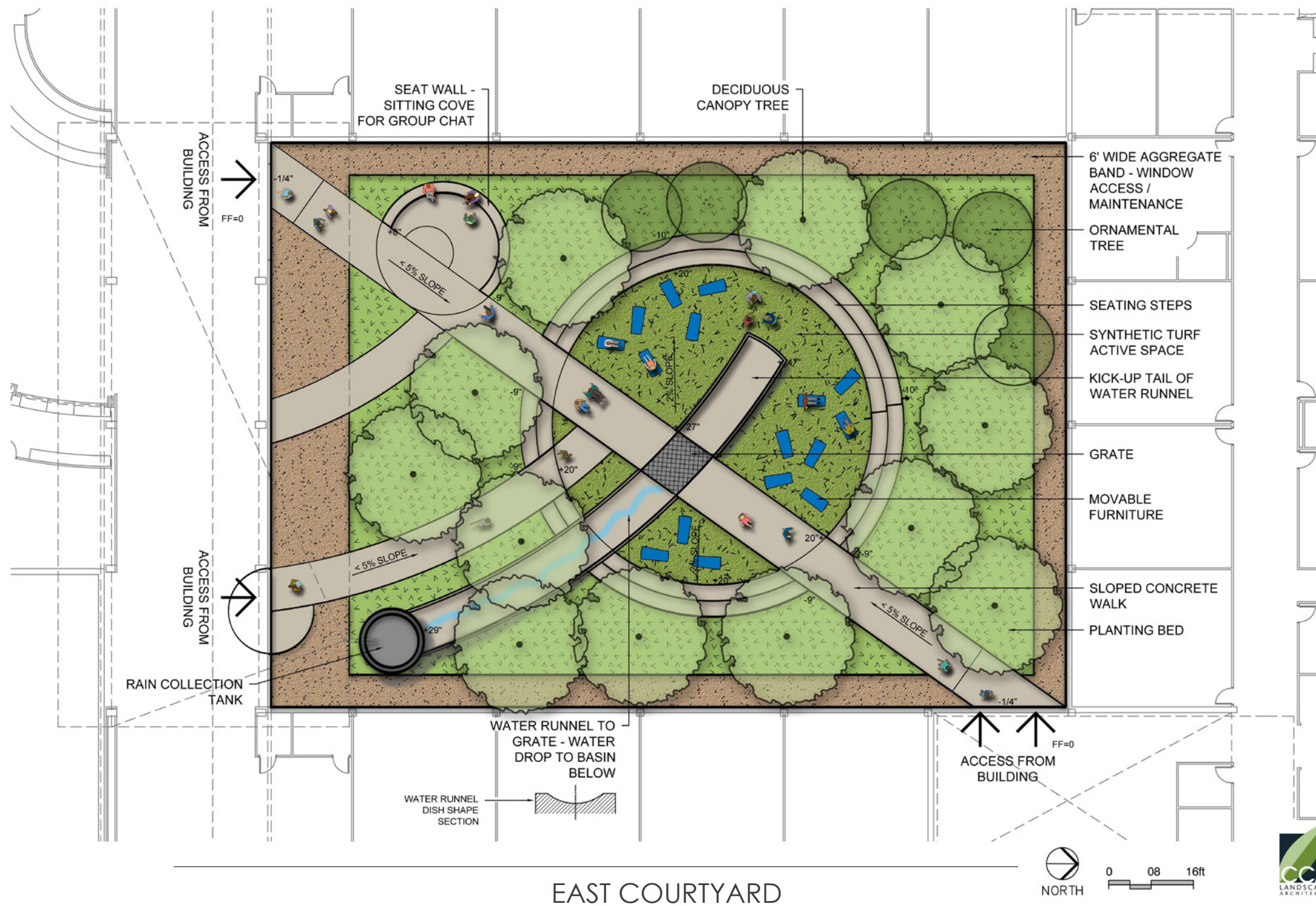


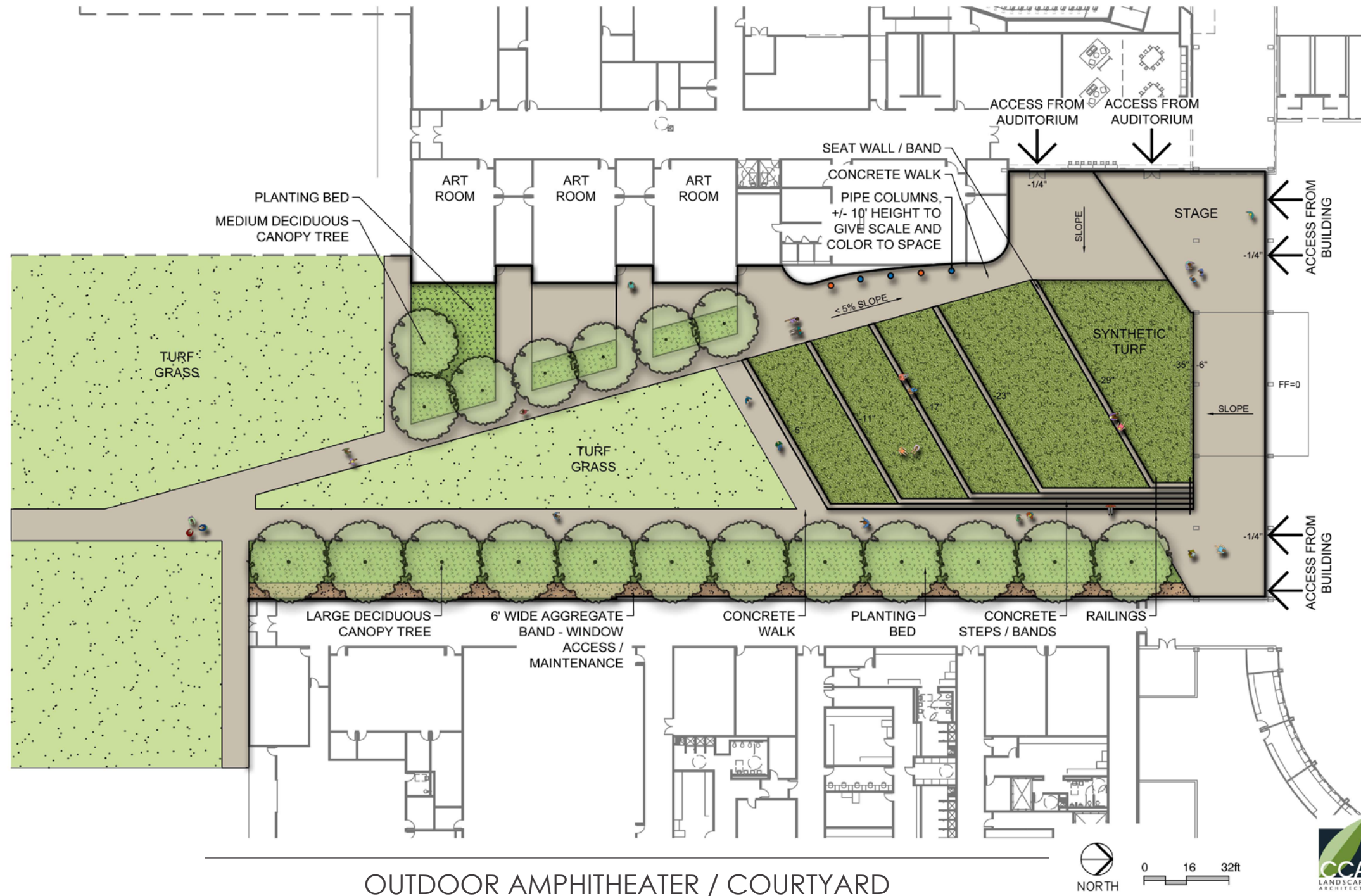


LEGEND

- Classroom
- Collaborative Area
- Science Lab
- Special Education
- Technology
- Library
- Athletics
- Administration
- Fine Arts
- Agricultural Science
- Food Services
- Service
- Circulation







OUTDOOR AMPHITHEATER / COURTYARD



AERIAL PERSPECTIVE



MAIN ENTRANCE





ACADEMIC HOUSES



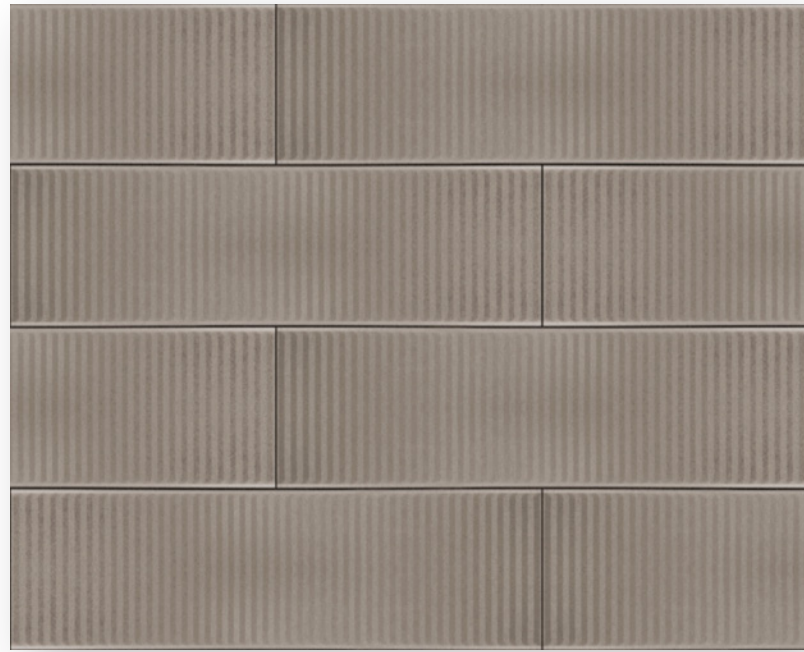
OUTDOOR AMPHITHEATER



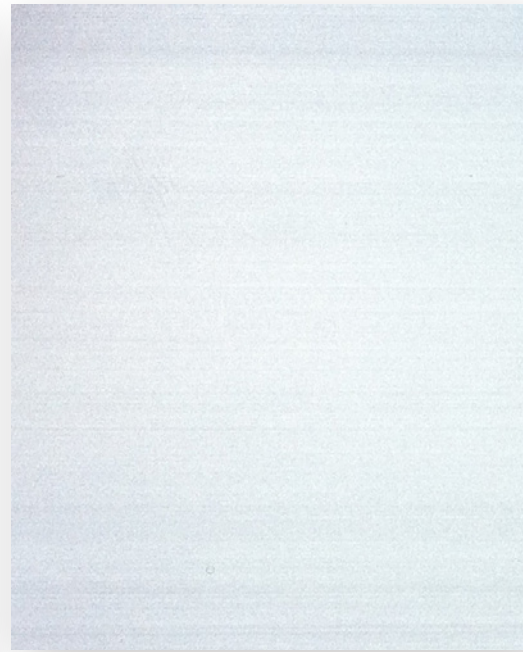
STUDENT ENTRANCE

METALS

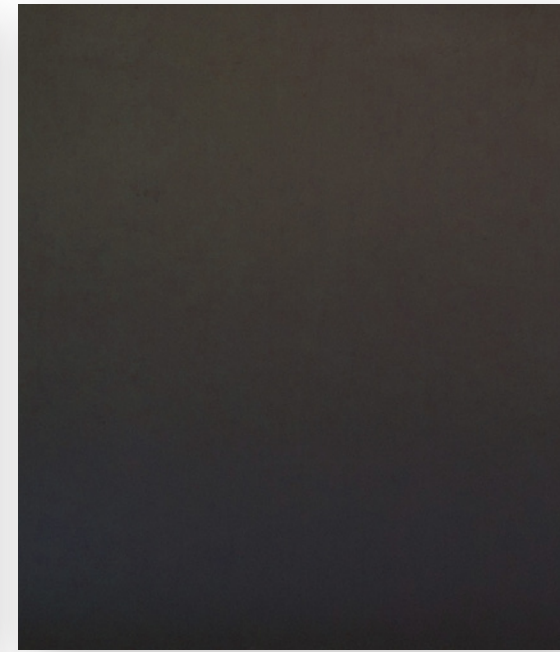
Fluted Fascia Panels: Champagne



Storefront/CW: Clear Anodized



Standing Seam Roof: Dark Bronze



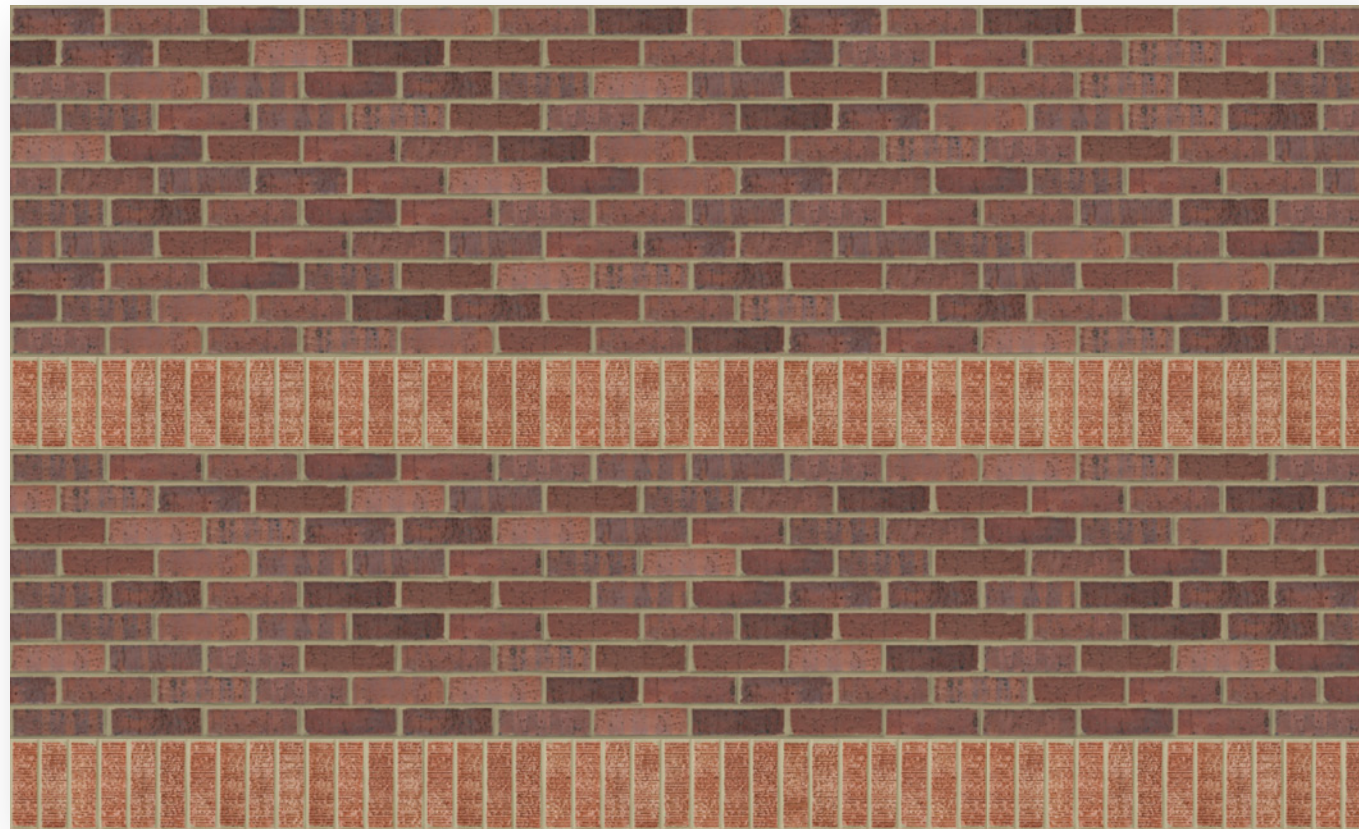
Aluminum Panel: Anodic Dark Bronze



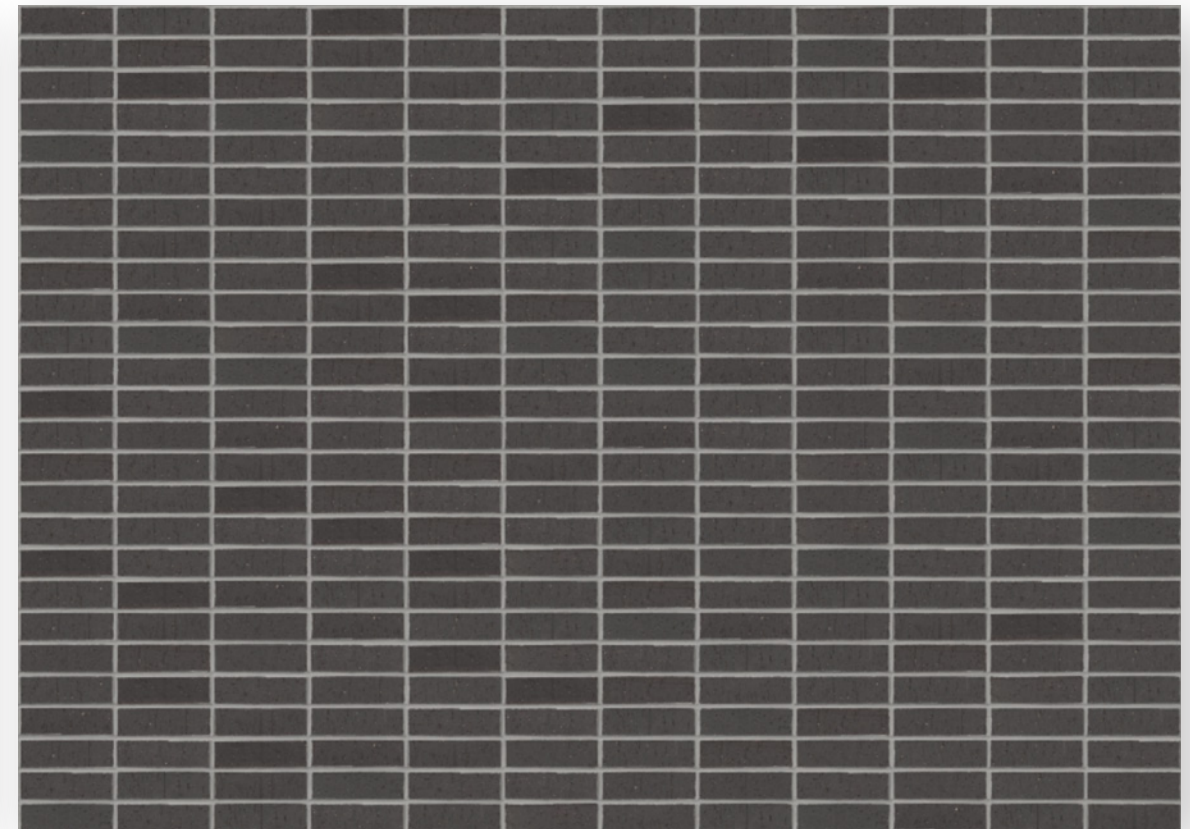
EXTERIOR FINISHES

MASONRY

Brick Veneer A:
Cranberry Flash Velour Running with Burnt Pumpkin Soldier



Brick Veneer B:
Ebony Stack Bond





COMPREHENSIVE HIGH SCHOOL #4

DESIGN DEVELOPMENT PRESENTATION. JANUARY 21, 2014

