



ALEDO I.S.D.

Proposed Expansion to

THE LEARNING CENTER

Schematic Design Review



VLK | ARCHITECTS

January 14, 2013





Proposed Expansion to The Learning Center
PROJECT GOALS
Schematic Design Review



VLK | ARCHITECTS

TLC currently houses DAEP and Alternative Education students

- DAEP serves both secondary and elementary students

Accommodate increased capacity due to testing requirements

Provide more graduation opportunities for students



Proposed Expansion to The Learning Center
PROJECT GOALS
Schematic Design Review



VLK | ARCHITECTS

Add learning spaces on both sides of the building

- Minimum of 2 additional learning spaces for DAEP
- 4-6 additional learning spaces for Alternative Education

Update the entrance to the building

- Provide distinctions between the programs

Provide space for outdoor learning and lunch

Project priority is to provide maximum flexibility for the Alternative Education learning spaces



Proposed Expansion to The Learning Center

PLANS

Schematic Design Review



VLK | ARCHITECTS



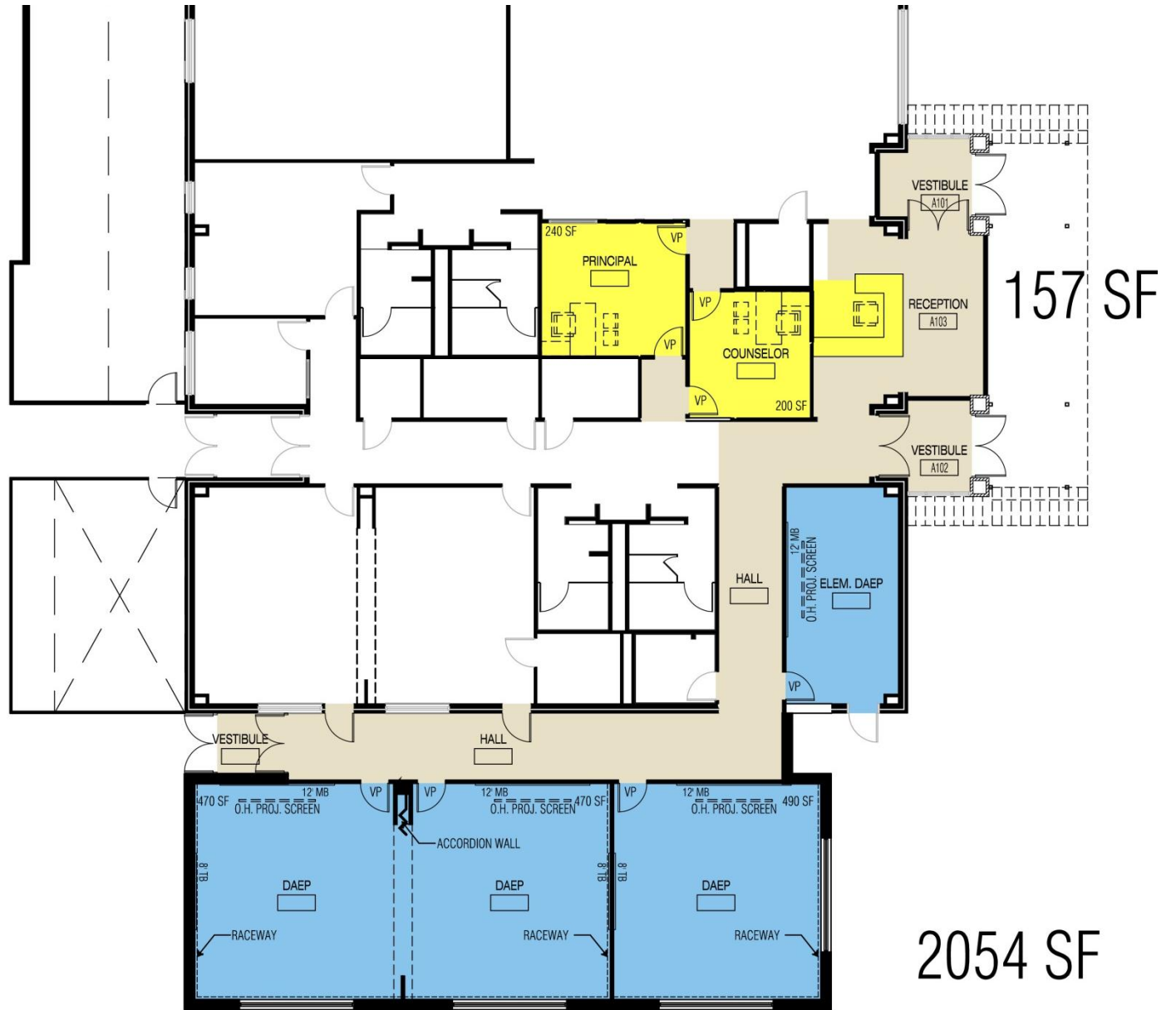
Alternative Education additions

Site improvements



New entrance and administration renovations

DAEP additions and renovations

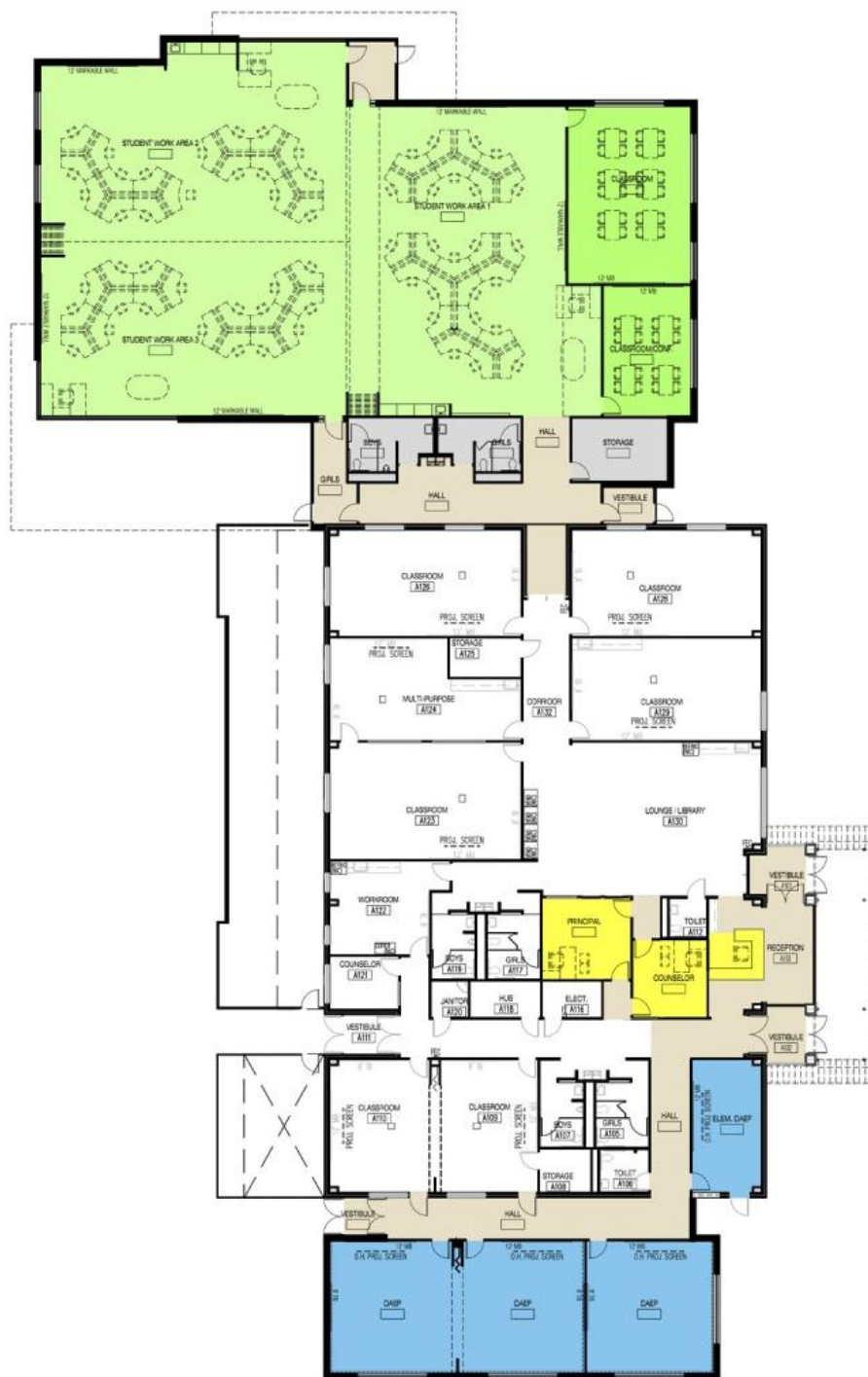


157 SF

2054 SF



7862 SF
60 STUDENTS



Total: 7862 SF



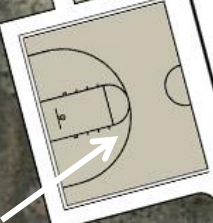
Existing Utilities



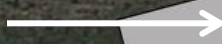
Seating Area



Play Surface



Future Parking



Bailey Ranch Rd



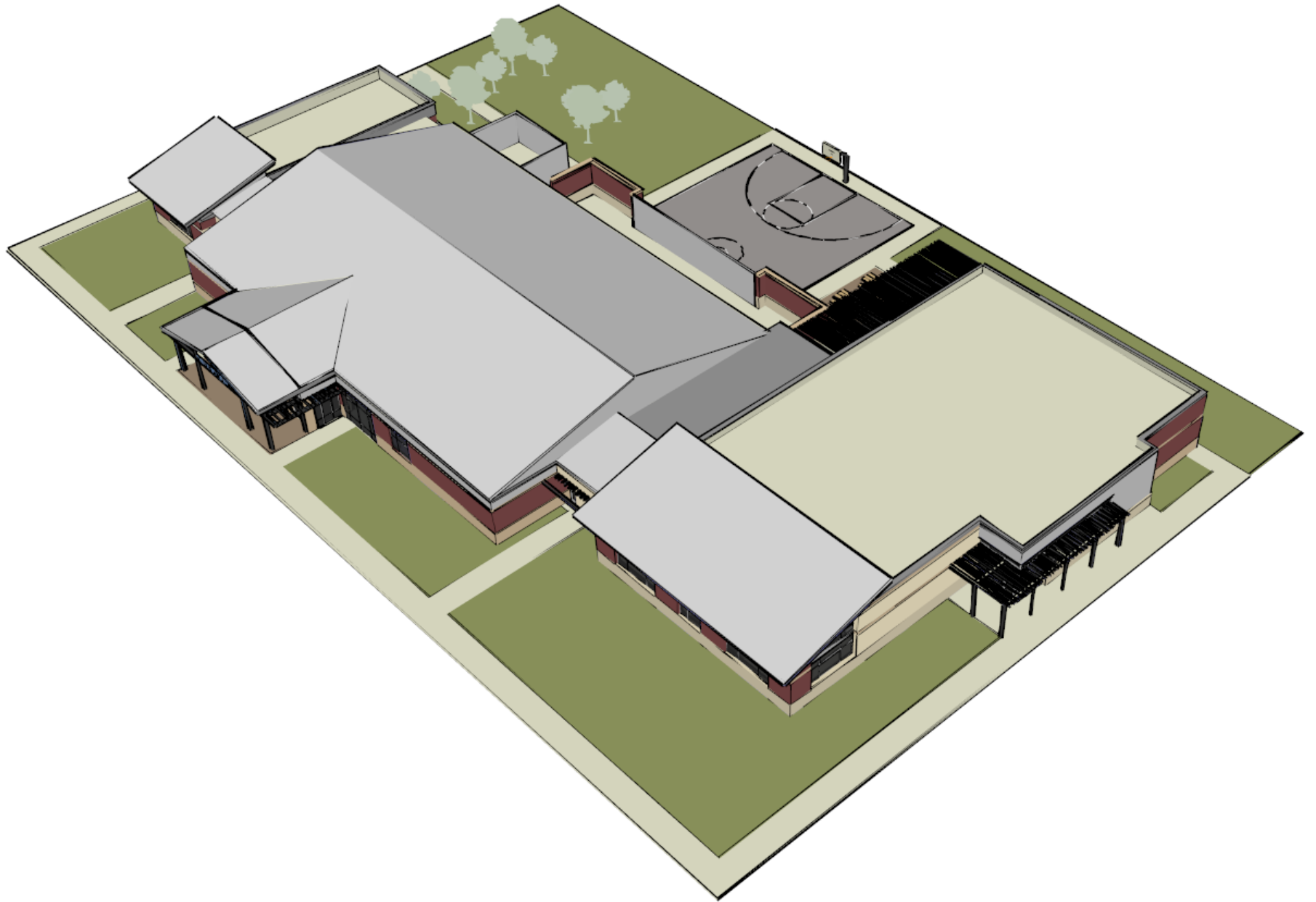
Proposed Expansion to The Learning Center

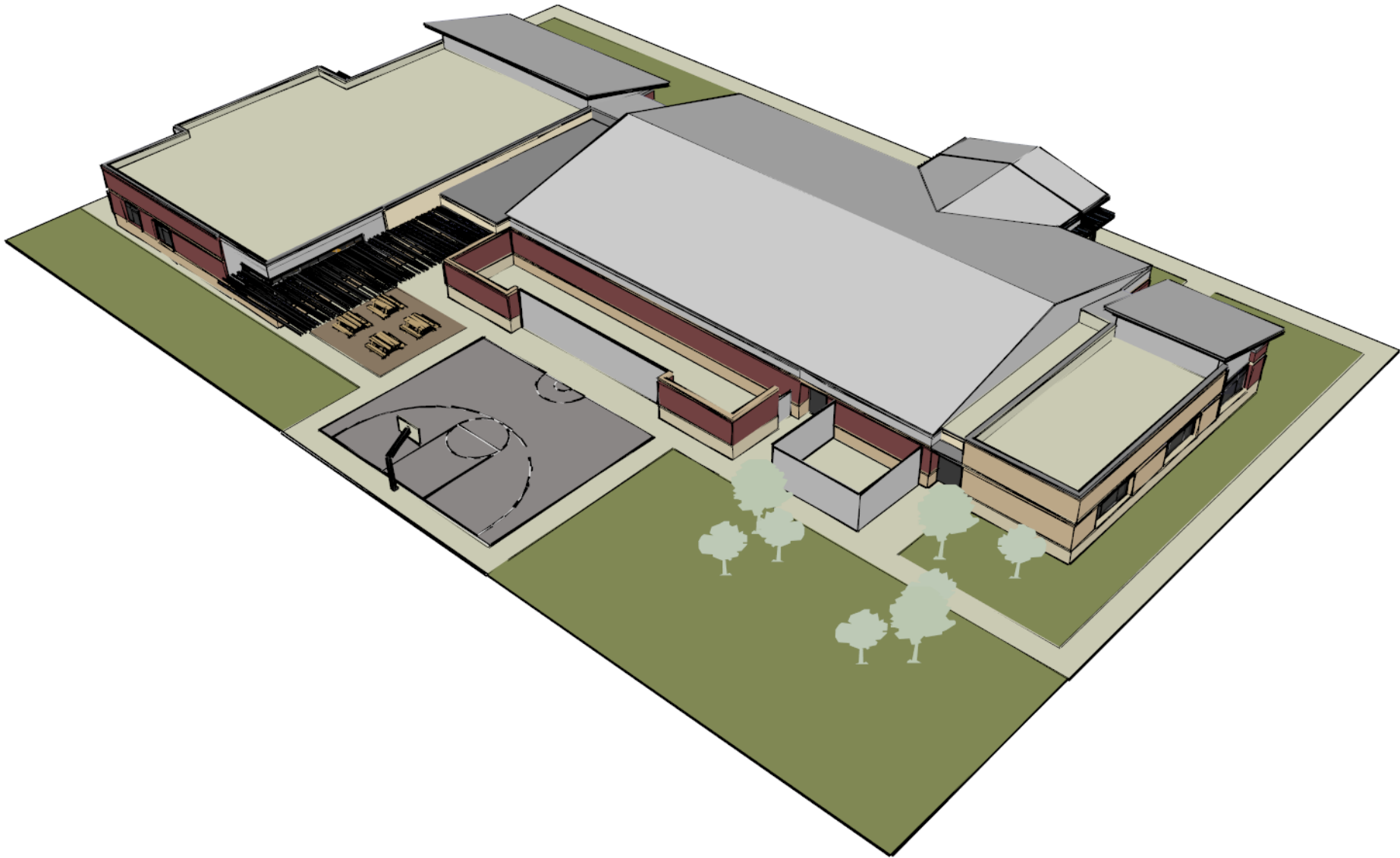
IMAGES

Schematic Design Review



VLK | ARCHITECTS











Proposed Expansion to The Learning Center

INFORMATION

Schematic Design Review



VLK | ARCHITECTS

Estimation of probable project cost at schematic level: \$2,725,000

- Factors:

- Rock excavation
- Relocating utilities
- New electrical services
- Standing seam architectural elements
- Relative scale of project
- Occupied structure
- FF&E
- Technology
- Professional fees

Substantial completion mid 2013/2014 school year



ALEDO I.S.D.

Proposed Expansion to

THE LEARNING CENTER

Schematic Design Review



VLK | ARCHITECTS

January 14, 2013