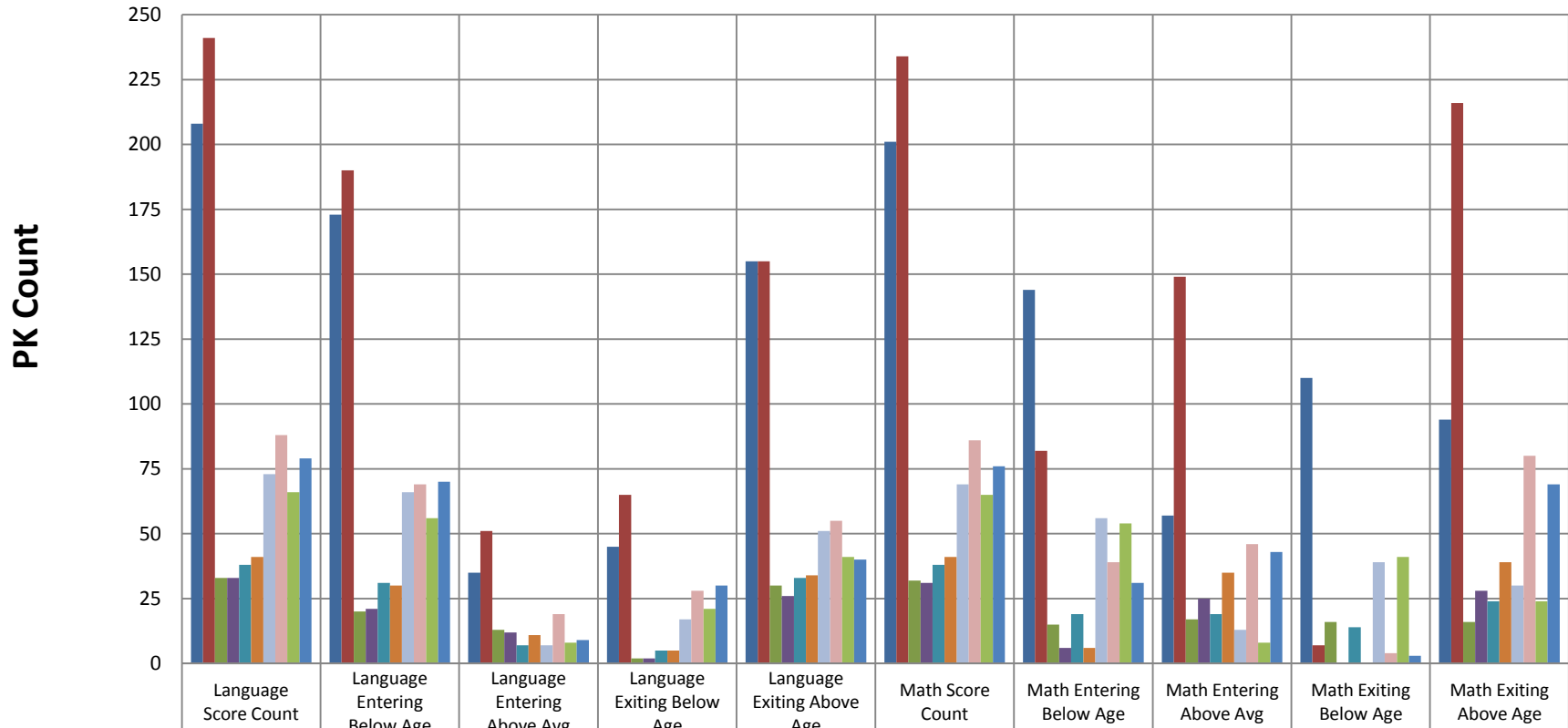
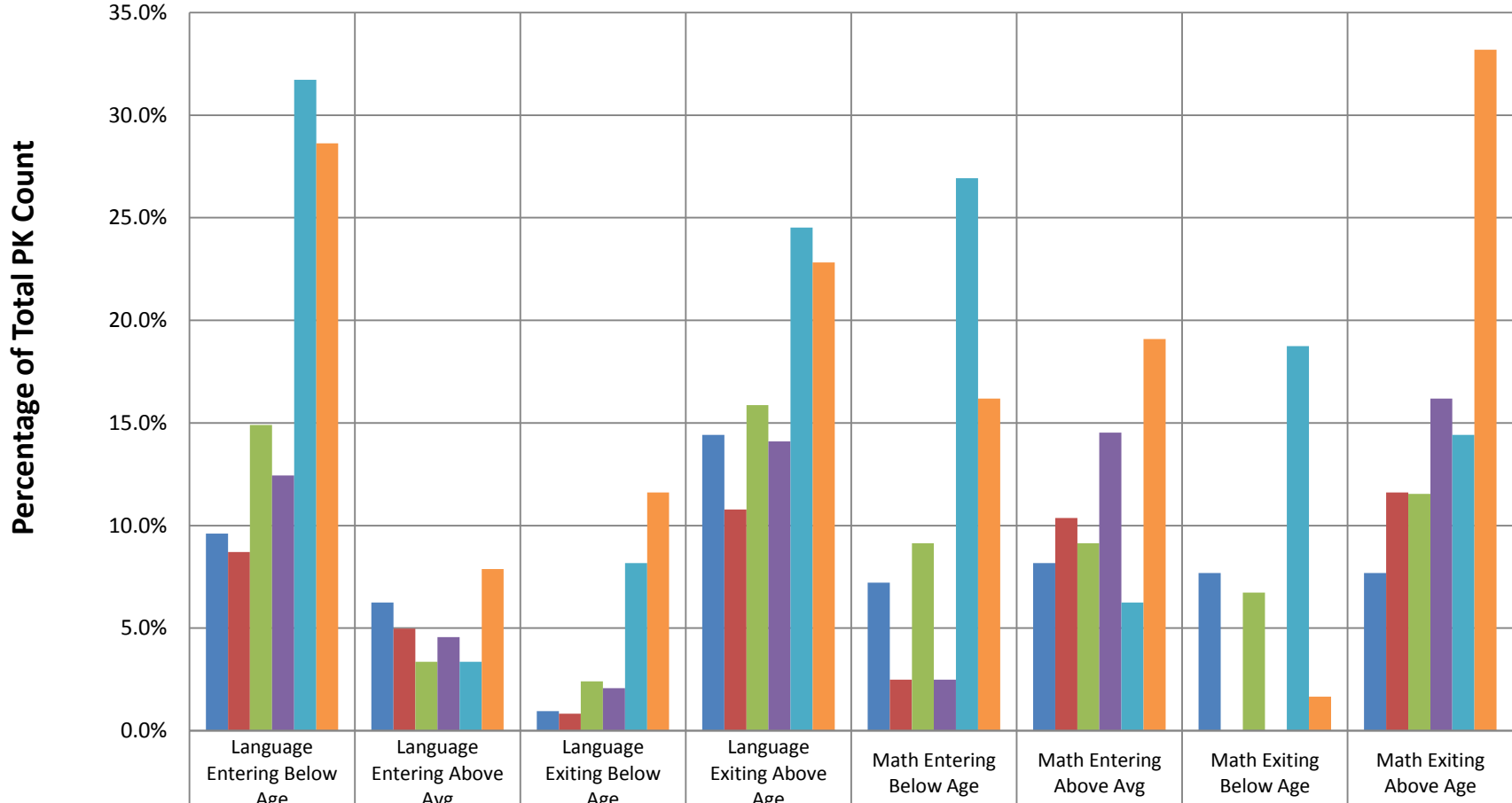


## Language and Mathematics Pre/Post Test Results for Pre K Students Tested in 2010-2011 and 2011-2012



■ Total Pre K 2010-2011	208	173	35	45	155	201	144	57	110	94
■ Total Pre K 2011-2012	241	190	51	65	155	234	82	149	7	216
■ Maj/Female 2010-2011	33	20	13	2	30	32	15	17	16	16
■ Maj/Female 2011-2012	33	21	12	2	26	31	6	25	0	28
■ Maj/Male 2010-2011	38	31	7	5	33	38	19	19	14	24
■ Maj/Male 2011-2012	41	30	11	5	34	41	6	35	0	39
■ Min/Female 2010-2011	73	66	7	17	51	69	56	13	39	30
■ Min/Female 2011-2012	88	69	19	28	55	86	39	46	4	80
■ Min/Male 2010-2011	66	56	8	21	41	65	54	8	41	24
■ Min/Male 2011-2012	79	70	9	30	40	76	31	43	3	69

## Language and Mathematics Pre/Post Test Results for Pre K Students Tested in 2010-2011 and 2011-2012



	Language Entering Below Age	Language Entering Above Avg	Language Exiting Below Age	Language Exiting Above Age	Math Entering Below Age	Math Entering Above Avg	Math Exiting Below Age	Math Exiting Above Age
Maj/Female 2010-2011	9.6%	6.3%	1.0%	14.4%	7.2%	8.2%	7.7%	7.7%
Maj/Female 2011-2012	8.7%	5.0%	0.8%	10.8%	2.5%	10.4%	0.0%	11.6%
Maj/Male 2010-2011	14.9%	3.4%	2.4%	15.9%	9.1%	9.1%	6.7%	11.5%
Maj/Male 2011-2012	12.4%	4.6%	2.1%	14.1%	2.5%	14.5%	0.0%	16.2%
Min/Female 2010-2011	31.7%	3.4%	8.2%	24.5%	26.9%	6.3%	18.8%	14.4%
Min/Female 2011-2012	28.6%	7.9%	11.6%	22.8%	16.2%	19.1%	1.7%	33.2%